



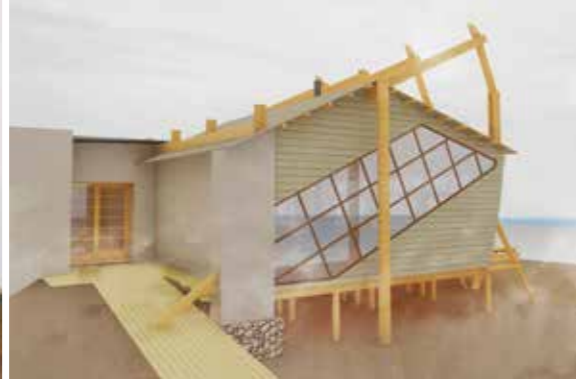
SHIPWRECK LODGE

SKELETON COAST. NAMIBIA

*unravel
the mystery*

Journeys *Namibia*
OFFERING • QUINTESSENTIAL • ADVENTURES





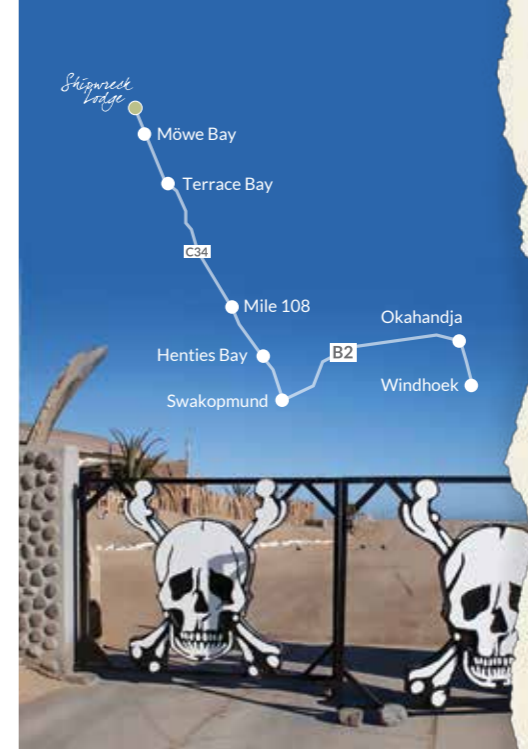
The most ethereal place on earth

Designed to echo the shipwrecks that are scattered along the tumultuous Namibian coastline, Shipwreck Lodge will be a singular experience. This exclusive destination opens its doors in June 2018.

Located in the famous Skeleton Coast Central Concession between the Huarusib and Hoanib River in the Skeleton Coast Park, only 45km North of Möwe Bay, the lodge is situated on the southern bank of the Huarusib River Mouth, nestled between the dunes with a view to the moody Atlantic Ocean.

Excursions by vehicle will take you to Oasis, ending at the finely sculptured Roaring Dunes. Visit the Clay Castles, a natural geological formation where you may spot the desert elephant and lion. Find remnants of the San People's ancient campsites in the Hoanib River Delta where wildlife flourishes.

From the sheltered deck, watch the waves crashing onto the lonely beach and experience a surreal sense of being suspended in time as the mist curls in from the ocean, wreathing the dunes in white.




SHIPWRECK LODGE
SKELETON COAST, NAMIBIA



+264 61 228 104

reservations@journeysnamibia.com

www.shipwrecklodge.com.na