



JAPAN RAIL PASS

by Red Dragonfly Travel



Activate your Pass

To activate your Japan Rail Pass, please go to any Japan Rail office.

They are spread through most Japanese Airports, such as Narita and Haneda. You can also find them at all the main train stations, located across the country. Once at a JR office, you will be asked to show your passport with a visitor entry stamp in and your Japan Rail voucher (exchange order).

After your personal data has been verified, you will be asked to select the activation date of your Rail Pass. This can be up to 30 days following the exchange date.

After activating your JR Pass, you will be able to use it on all JR trains, buses, and ferry services.

JR Pass Validity

- JR trains
- The pass is valid on almost all trains operated on the nationwide network of JR (Japan Railways), including shinkansen, limited express, express, rapid and local trains.
- Tokyo Monorail to/from Haneda Airport.
- JR Ferry to Miyajima.
- Some non-JR trains to access isolated JR lines
- The pass is valid on a small number of non-JR trains to access remote, isolated JR lines that would otherwise be inaccessible. However, pass holders may only get on and off at stations that provide a transfer to a JR line.

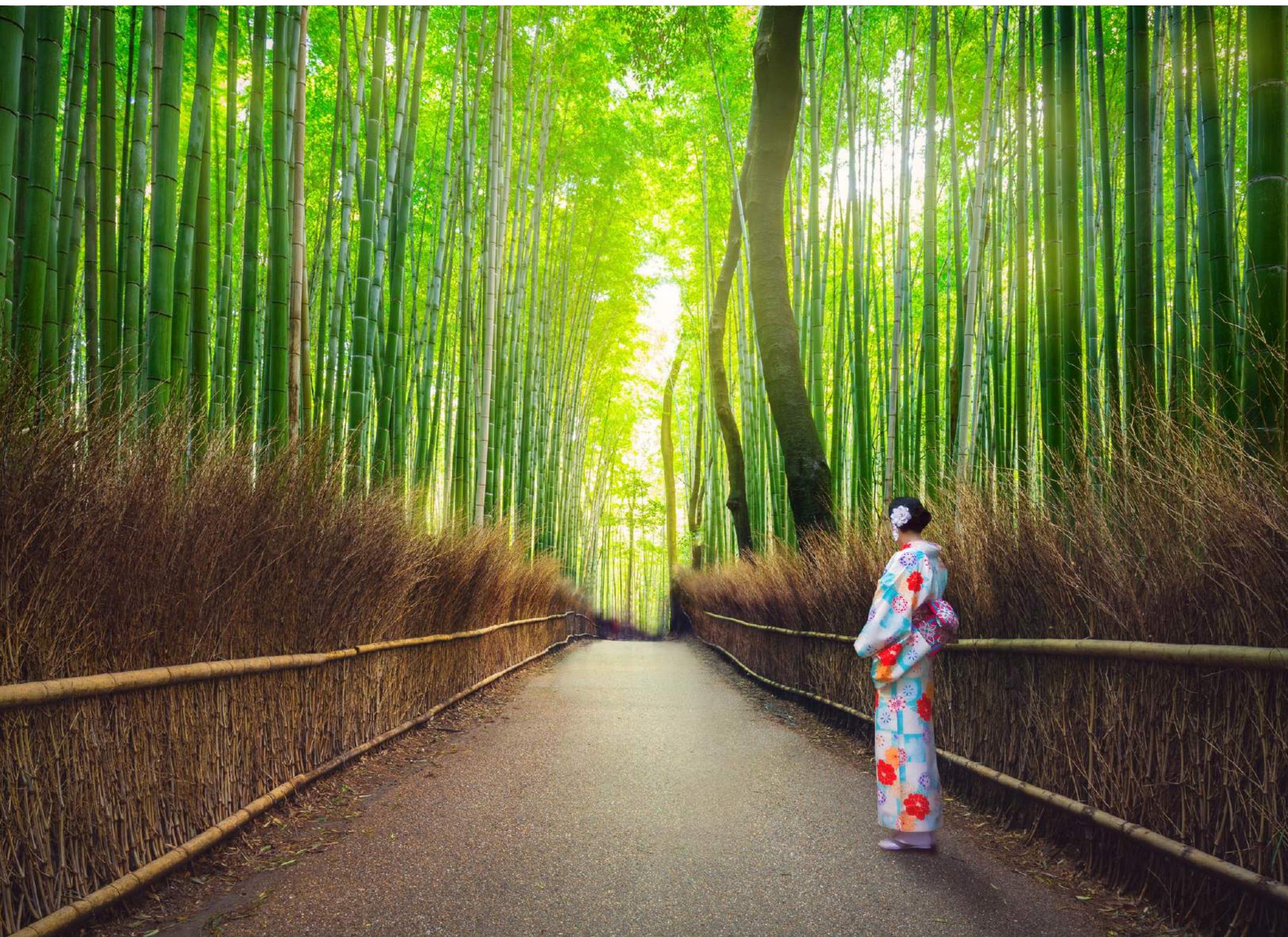


JR Pass Validity

- The following non-JR trains may be used:
 - Aoimori Railway between Aomori, Noheji and Hachinohe to access the JR Ominato Line to the Shimokita Peninsula.
 - IR Ishikawa Railway between Kanazawa and Tsubata to access the JR Nanao Line to the Noto Peninsula.
 - Ainokaze Toyama Railway between Toyama and Takaoka to access the JR Himi Line and JR Johana Line.
- Local JR buses
- The pass is valid on a small number of local buses operated by JR (but not on highway buses). The following can be useful:
 - Yamaguchi - Hagi
 - Kyoto Station - Ryoanji - Takao
 - Kanazawa Station - Kenrokuen
 - Tokyo Station - Tokyo Big Sight
 - JR buses to Lake Towada
 - JR tourist loop bus in Hiroshima
 - JR city buses around Sapporo
 - JR local bus to Kusatsu Onsen

JR Pass Validity

- JR Pass is **Not** Valid On
 - Mizuho trains along the Kyushu/Sanyo Shinkansen
 - Nozomi trains along the Sanyo/Tokaido Shinkansen
 - JR trains that use non JR tracks
 - JR liner trains
 - Berth and special compartments
 - Express bus routes operated by JR bus companies
 - The JR Hakata-Pusan (Korea) ferry



Narita Airport

You can activate your Japan Rail Pass on arrival at Narita Airport. There are JR East Centres in both Terminal 1 and Terminal 2. In case you are unable to make it to the Terminal 1 Centre before closing (6 pm), the office in Terminal 2 (10 minutes away) is open until 8 pm.

The Narita Express requires a seat reservation, so be sure to make them at the same time as activating your JR Pass.

https://www.jreast.co.jp/e/customer_support/service_center.html

Business Hours

JR EAST Travel Service Center – Narita Airport Terminal 1

[2022/12/20~]

Hours of operation

All Days:8:30-18:00

JR EAST Travel Service Center – Narita Airport Terminal 2-3

[2022/12/20~]

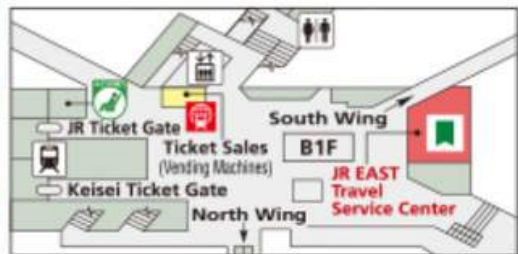
Hours of operation

All Days:8:30-20:00



Locations

JR EAST Travel Service Center - Narita Airport Terminal 1



JR EAST Travel Service Center - Narita Airport Terminal 2-3





The Narita Express

The Narita Express "N'EX" is a fast, convenient, and comfortable limited express train that directly connects Narita International Airport with major cities and districts including Tokyo, Shinagawa, Shibuya, Shinjuku and Yokohama. Changing trains along the way is stress-free!

As Narita is quite a distance from Tokyo, it's fairly long ride. To get to Tokyo Station can be just under an hour. To go to Shinjuku can be 90-minutes.

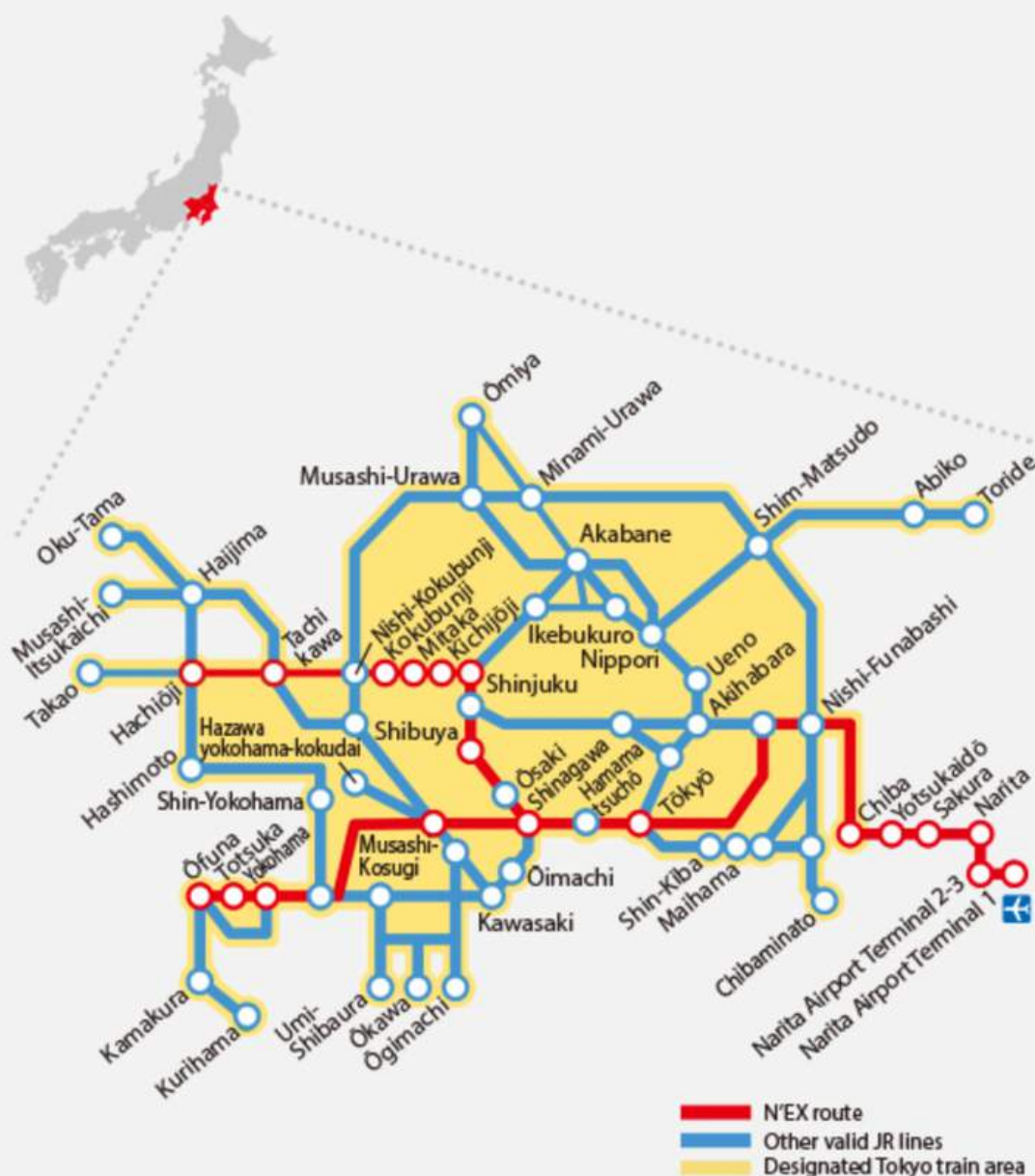


It's easy to find the station for the Narita Express at the airport, just follow the 'train' signs as you exit the arrivals area.

The Narita Express goes directly to the following major stations in Tokyo:

- Chiba
- Tokyo
- Shinagawa
- Shibuya
- Shinjuku
- Ikebukuro

Narita Express service area (Narita Express stop)



Direct connection between Narita Airport Terminal 1 Station and Tokyo Station with journeys as fast as 53 minutes

Planning your Journey

You can view train times on the website below:

<https://world.jorudan.co.jp/mln/en/>

The screenshot displays the 'Japan Transit Planner' interface. At the top, there is a 'Route Search' button. Below it, a summary bar for 'Route 1' shows a departure time of 09:02 and an arrival time of 11:09. The route is categorized as 'Easy' and 'Fast', with a total 'Time' of 2 hr 7 min and a 'Ticket' price of 7,020 yen. There are icons for printing and a document list. The main section details the journey from Kanazawa (金沢) at 09:02 on Platform 2 (2番線) to Kyoto (京都) at 11:09 on Platform 7 (7番線). The train is a 'Limited Express Train' named 'Thunderbird No.14 (For Osaka)' (サンダーバード14号(大阪行)), which takes 127 minutes. Ticket information is provided: 'Ticket / 4,070 yen (For Kyoto)' and 'Reserved Seat / 2,950 yen (For Kyoto)'. There are also 'Hotel' and 'Map' buttons for the destination.

It's easy to use and will give you times, and durations of train departures.

For a fee of about NZD4 / month you can view more information on the website including platform details



Red Dragonfly Travel

