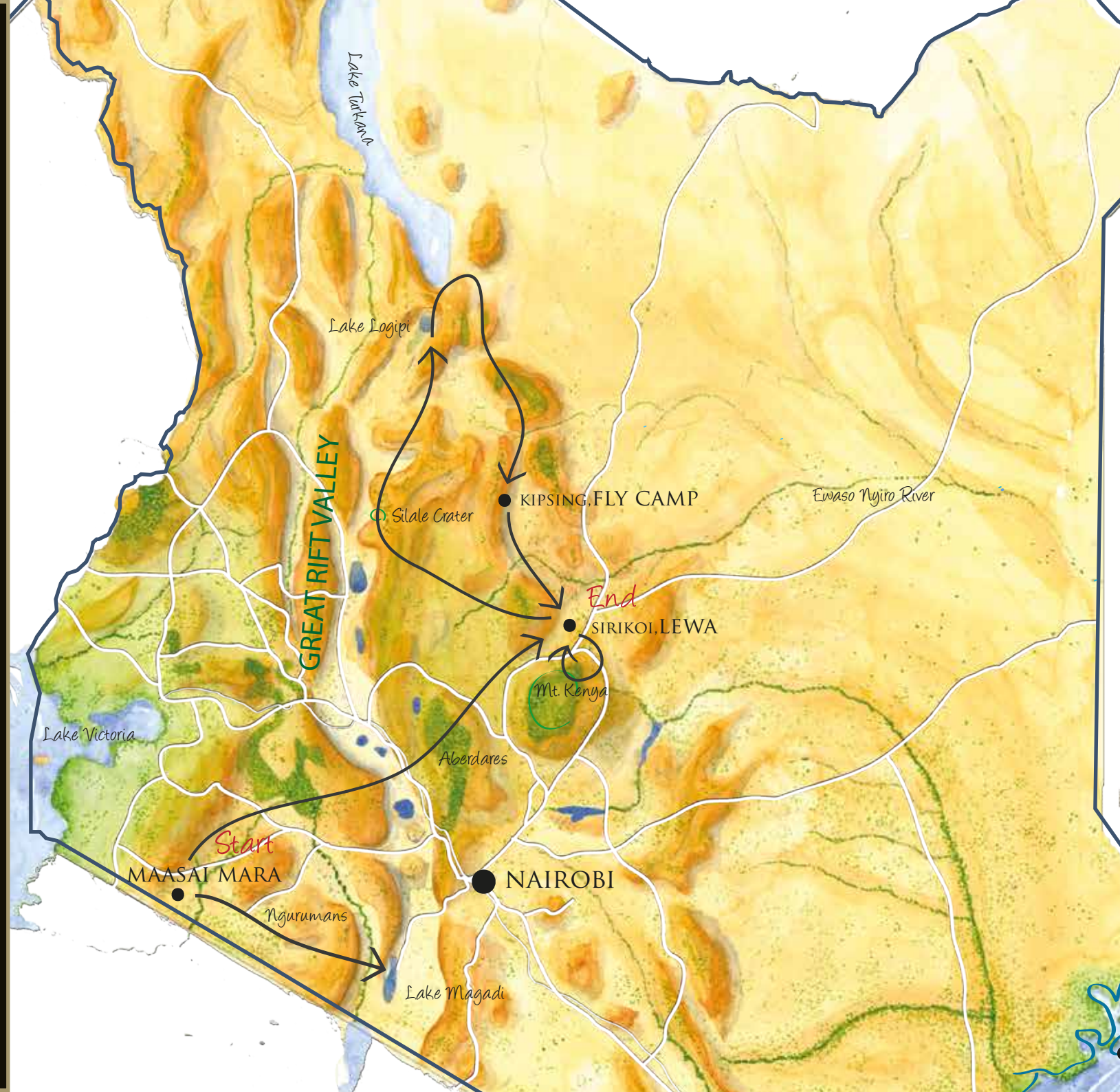




KENYA BY HELICOPTER

EXTRAORDINARY LANDSCAPES, RICH IN WILDLIFE & CULTURE

HELICOPTER SAFARI
ROUTE
through Kenya



MAASAI MARA

*Offering a wildlife spectacle like
none other*







MORNING EXCURSION
TO LAKE MAGADI, OVER
THE **NGURUMAN**
ESCARPMENT

The 50km long escarpment forms the western wall of the Great Rift Valley. Below it are the vast plains and the volcanic hills of the Great Rift Valley, and the soda Lakes of Magadi and Natron (Tanzania).



LAKE MAGADI

Rarely visited because of its remoteness, Lake Magadi is the most southerly of Kenya's Rift Valley lakes. It is almost entirely covered by a thick encrustation of soda that supports many bird species and gives the landscape a strange moon-like feel.





HELICOPTER TRANSFER
TO THE
**LEWA WILDLIFE
CONSERVANCY**
VIA THE ABERDARE
RANGE & RIFT VALLEY



ABERDARE RANGE

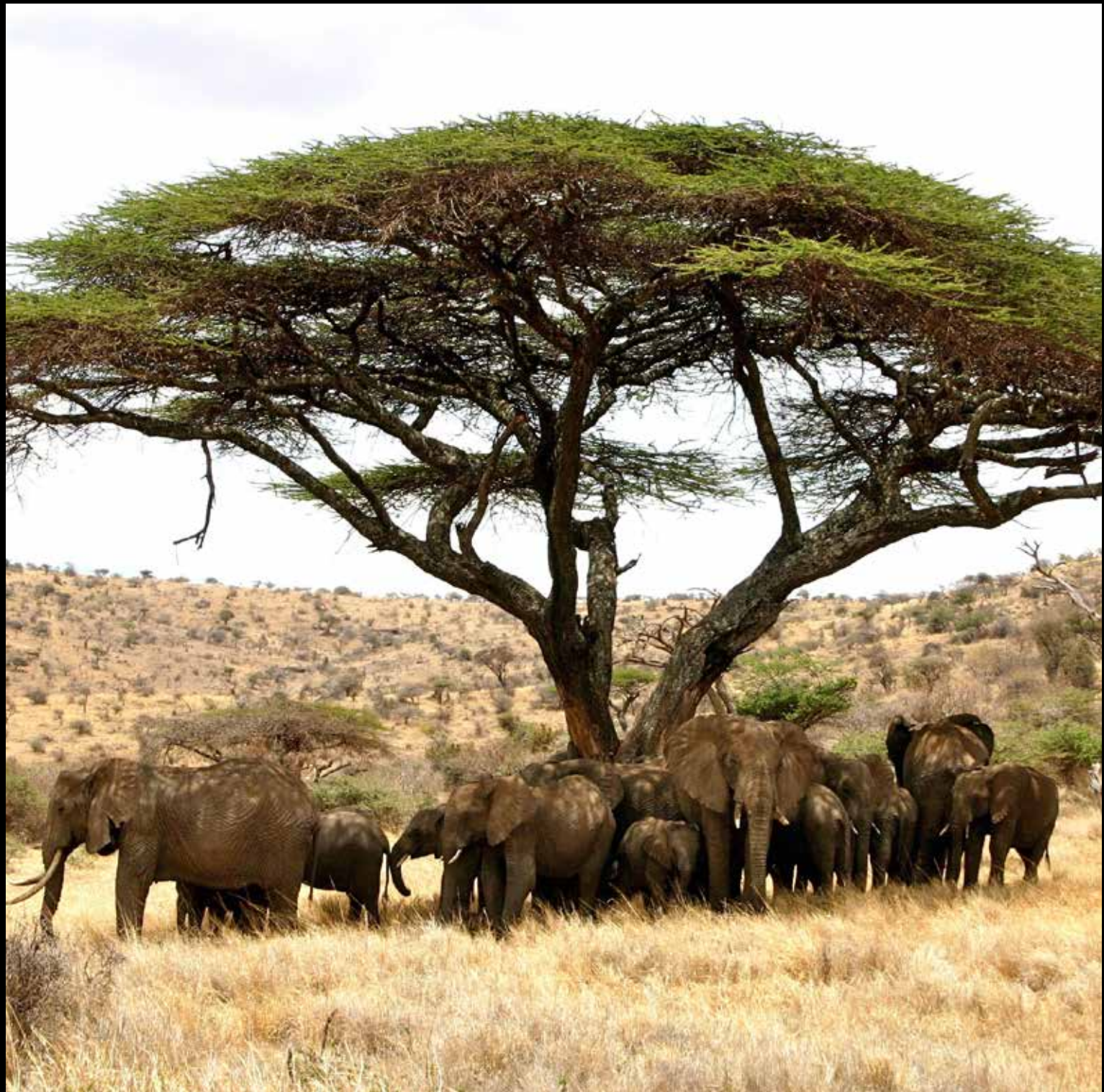
The Dragons Teeth' as these sharp volcanic cones are known, are located on highest point of the Aberdares - Mount Satima. The 160km range runs along the Eastern wall of the Great Rift.



LEWA WILDLIFE CONSERVANCY

Lewa is a 62,000 acre private wildlife conservancy, famous for its black rhino conservation.

Game drives are exciting and rewarding, with good chances of spotting some of the unique wildlife species to Northern Kenya, including Grevy's zebra, Reticulated giraffe, Somali ostrich, gerenuk, Greater kudu, Beisa oryx. Cheetah and lion also roam the plains. Nature walks, picnics and sundowners are also on offer.



SIRIKOI

A spectacular game lodge surrounded by the Lewa Wildlife Conservancy in Northern Kenya, beautifully set within a shady acacia grove overlooking a natural waterhole.

Offering an amazing game experience, adventure and excitement, Sirikoi also provides the perfect luxury.



SIRIKOI



MOUNT KENYA

Dawn flight around the peaks

An ancient extinct volcano, standing over 5000 metres tall, in the heart of Kenya, with rugged peaks, glacial valleys & forested slopes.

This is Africa's 2nd highest mountain, after Mount Kilimanjaro.



*Everlasting flowers, giant
groundsel, lobelia & wild herbs
are typical for this afro-alpine
zone*



Many tarns and rivers are found
on the upper slopes of the
mountain.

We land on the shore for a
picnic breakfast, surrounded
by beautiful views and unique
mountain flora.



*Blue-green mountain lakes sparkle
in the morning sun*

Lake Michelson is one of our favourite spots that few have ever been so lucky to visit. Almost inaccessible by foot, and well off the beaten track, the lake is located in a deep crater which falls away to a spectacular valley.



DESERTS & LAKES OF THE NORTH

Day excursion

*Silale Crater - the first stop of our
helicopter excursion*

A vast caldera, carpeted by
grasses and shrubs.



*The Suguta - characterised by
a flood pan dominated by green
algae, seasonal streams and
dramatic rock formations*

Geologists have long been fascinated with this region. They have studied ancient sediments, fossil remains, and occasional artifacts, and pieced together the history of a lake that rose and fell multiple times over the past 18,000 years.



The Painted Valley'

The 'Painted' Valley, as we call it,
is a severely eroded valley, in all
shades of red and brown.



The hoodoe valley - amazing weathered rock formations



Sand dunes of the Suguta Desert



Lake Logipi

A saline seasonal lake that lies at the southern end of Lake Turkana.

The lake is one of Kenya's most important breeding grounds for the lesser flamingo.



Lake Turkana

The world's largest permanent desert lake, Turkana, is wild in character with its parched volcanic beaches, granite outcrops and lava flows.

The lake's shores have revealed some of the world's oldest fossil finds, from dinosaurs to early Man, discovered by the Leakey family.



ADD ON OPTION KIPSING VALLEY

The Kipsing valley lies in the heart of Samburuland. A wildly dramatic landscape with sandy luggas and tropical arid savannah scenery. Here, under wide skies and against a backdrop of low hills, herds of animals roam across the plains.



FLY CAMP

Kipsing Valley

From the base of a simple desert style tented camp, perfectly positioned on the banks of dry sandy river bed beneath large shady acacia trees, we will explore the region and enjoy its unique wildlife.



QUAD BIKING

Kipsing Valley

Exploring the arid landscape by quad bikes is a thrilling way to traverse the sandy luggas and rocky hillsides, spotting a variety of wildlife - small and large!



SINGING WELLS

Samburu

The singing wells are an assured watering point for many northern pastoralist communities. During the drought, they dig deep into the earth, and bail out water for their livestock. It's an amazing privilege to visit these wells - and meet the people whose lives depend on these treasured sites.



HELI SAFARI
ENDS



Private helicopter and pilot / guides are provided by a leading air charter company based in East Africa, specialising in heli-safaris and adventures, with more than 10 years of experience in this field.

The Eurocopter AS 350 B3's are perfectly adapted to fly in East Africa's hot and high environments.

Aircraft are fitted with satellite tracking software, pilots are trained in 'first person on scene' first aid, and all precautions are carried out to ensure maximum safety and comfort.

