

A close-up profile of an elephant's head, showing its textured, wrinkled skin and a large, curved tusk. The elephant is facing right. The background is a soft-focus savanna landscape with green grass and a clear sky.

A golden sunburst logo with five stars inside a semi-circle, positioned above the text.
FIVE STARS
Tours & Safaris

19 DAYS – NAMIBIA | VICTORIA FALLS | BOTSWANA

2023

ESCAPE TO AFRICA



Mandy Strauss
+49 1515 740 3475
tours@fivestars-safaris.com
www.fivestars-namibia.com



19 Days - Namibia, Victoria Falls & Botswana (2023)

Windhoek - Sossusvlei - Swakopmund - Namib - Brandberg - Etosha South - Etosha East - Etosha National Park - Divundu - Kasane - Chobe National Park - Nata - Makgadikgadi Salt Pans - Maun - Moremi Game Reserve - Ghanzi - Kalahari North
19 Days / 18 Nights
2 Persons



Introduction

Wildlife, Wonders & Adventure Awaits.

Namibia's gasp-inducing scenery and camera-busting concentrations of wildlife have made it a top choice for travellers in recent years. Here, all that you have experienced will play out against a breath-taking backdrop of desert horizons and starry skies. Add to that an excellent road network and general infrastructure and a sprinkling of fantastic lodges, and you've got one of the most tourist-friendly destinations on the continent.

On this 19-Day (Self drive or Private guided) adventure safari you will discover some of Africa's top safari attractions and natural wonders, where you can truly disappear into the wilderness and connect with nature. Experience exhilarating wildlife experiences, paired with decent tented camps set in remote wilderness areas.

THINGS TO LOOK FORWARD TO:

- Explore the natural wonders of the Namib-Naukluft Park
- Climb the highest sand dunes in the world
- Stargazing under the magnificent African sky
- Descend to the floor for the deepest canyon in Africa
- Admire the oldest Bushmen Rock Art in the world
- Search for desert adapted elephants
- Visit Victoria Falls and marvel at this natural wonder
- Explore Chobe Park in Botswana with its fabled elephant population
- Glide along ancient waterways of the Okavango Delta in a traditional mokoro canoe





Located in southwestern Africa, Namibia boasts a well-developed infrastructure, some of the best tourist facilities in Africa, and an impressive list of breathtaking natural wonders. Visitors can explore the capital of Windhoek and discover the lovely coastal town of Swakopmund boasting remnants of the country's German influence, reflected in the architecture, culture and cuisine. To properly appreciate this extraordinary country, explore the remarkable natural landscapes Namibia has to offer. These include: the impressive Fish River Canyon; the vast Etosha National Park teeming with abundant wildlife; the hauntingly beautiful Kalahari Desert; and of course the Namib Desert.



Botswana is renowned for its pristine wilderness areas characterised by deep lagoons, wetlands, lush palms, rugged hills and desert plains. The country's primary tourist drawcard is undoubtedly the vast red expanse of the Kalahari Desert and its remarkably beautiful Okavango Delta, the largest inland delta in the world. These natural wonders provide a tranquil haven for an abundance of African wildlife to thrive. Other highlights include the impressive Makgadikgadi Salt Pans; the Savuti plains, which host a significant pride of lions; and the Tsodilo Hills, where 4500 rock paintings form a unique record of human settlement over many millennia.



A nation of spectacular natural beauty, friendly people and rich culture, Zimbabwe's status as one of Africa's leading safari destinations was dampened for years by its political instability. But now that the country is transcending its strife and returning to a state of equilibrium, it is once again emerging as a vacation highlight of the continent. Victoria Falls – known to locals as 'The Smoke That Thunders' – is one of the seven natural wonders of the world and the sheer power of this massive body of water plunging into the Zambezi Gorge is awe-inspiring and unforgettable.

ITINERARY AT A GLANCE

Accommodation	Destination	Basis	Room Type	Duration
The Utopia Boutique Hotel	Windhoek	B&B	Standard Room	1 Night
Elegant Desert Lodge	Sossusvlei	FB	Standard Room	2 Nights
Hotel Schweizerhaus	Swakopmund	B&B	Standard Room	2 Nights
Brandberg White Lady Lodge	Brandberg	HB+	Standard Room	1 Night
Toshari Lodge (Etosha Gateway)	Etosha South	HB	Standard Room	1 Night
Emanya@Etosha Game Lodge	Etosha East	HB	Standard Room	2 Nights
Ndhovu Safari Lodge	Divundu	FB	Safari Tent	1 Night
River View Lodge	Kasane	HB+	Standard Room	3 Nights
Nata Lodge	Nata	HB	Standard Chalet	1 Night
Crocodile Camp Safari & Spa	Maun	HB	Standard Room	2 Nights
Symponia Guesthouse	Ghanzi	HB	Standard Room	1 Night
Sandune Game Lodge	Kalahari North	HB	Standard Room	1 Night

Key

HB: Half Board - Dinner, Bed and Breakfast

B&B: Bed and Breakfast

FB: Full Board - Dinner, Bed, Breakfast and Lunch

HB+: Half Board Plus - Dinner, Bed, Breakfast and Planned Activities

Day 1: The Utopia Boutique Hotel, Windhoek



Day Itinerary

Upon your arrival at Hosea Kutaku International Airport, you will be warmly welcomed by your tour guide. He will hand over your comprehensive tour file and answer any questions you might have about your journey ahead. If you booked a self-drive tour, our local representative will meet you at the airport and assist with collecting your rental vehicle.

The drive into Windhoek takes around 40 minutes, so you can relax and enjoy the scenery on the way to your first destination.

Overnight: The Utopia Boutique Hotel [View iBrochure](#)

Your overnight stay is at Utopia Boutique Hotel. The modern, up-market Utopia Establishment offers serene rooms situated amidst beautiful, green lush gardens. It is also conveniently situated in the most tranquil suburb, Klein Windhoek, just 5 minutes away from the city center. A convenient base for exploring the capital of Namibia, the hotel puts the area's most exciting cultural and historical attractions at your doorstep.

Basis

Bed and Breakfast



Activities

Activity with your tour guide on a private basis (Museum Entry Fee Included) - (Self Drivers do self-guided City Tour - Museum Entry Fee Excluded)

- Windhoek City Tour

Embark on a city tour, walking/driving of Windhoek's historical buildings & monuments as well as the suburbs of Khomasdal, Katutura & Ludwigsdorf.

This lively metropolis serves as the head of the country's enterprise, administration, education and cultural bodies. The city is an eclectic blend of modern-day animation and colonial accents, interspersed with breath-taking sights and natural attractions in and around Windhoek.

Day 2: Elegant Desert Lodge, Sossusvlei



Day Itinerary

It's a 4-hour drive to Sossusvlei. Arrive in time for lunch, you may want to enjoy an afternoon walk through the Sesriem Canyon with your tour guide.

Two Night Stay: Elegant Desert Lodge [View iBrochure](#)

Situated on the border of the World heritage site of the Namib Desert and only 38 km from the gate to Sesriem and Sossusvlei, the Elegant Desert Lodge offers accommodation in 27 elegantly appointed rooms. All en-suite, the tasteful and comfortable rooms invite you to recline in the soulful yet liberating atmosphere of the world's oldest desert.

The beautiful and tranquil garden - a small oasis in the desert - offers various places to sit and relax. Alternatively, you can enjoy the vistas of the desert plains from the veranda of your own room. Wake to the multi-coloured light of the splendid desert sunrise. Indulge in the extensive and wholesome breakfast buffet. Dinner will tickle the taste buds with traditional Namibian delight, served either in the restaurant, or outside under the stars in the garden, depending on the weather.

The friendly and well-trained staff as well as the eerie silence and untouched landscapes will make your stay at The Elegant Desert Camp a truly memorable experience.

Basis

Full Board - Dinner, Bed, Breakfast and Lunch



Recommended Activities (Excluded)

- Scenic Sunset Drive

Game viewing in open safari vehicles as the sun goes down – that is what Sunset Drives are all about. Enjoy an afternoon game drive in an open safari vehicle and your experienced guide will point out the special features of the area and provide interesting facts about nature. Game sightings are almost guaranteed and the driver definitely knows the most beautiful spot for a sundowner. You will be back at the lodge in time for dinner. Includes: Drinks & Snacks

Day 3: Elegant Desert Lodge, Sossusvlei



Day Itinerary

After a good night's rest rise early and soak in the contrasting, never-ending landscape, glowing in the magical light of sunrise, whilst having breakfast.

Watching the sun rise over Sossusvlei is one of those experiences that just changes you. As the light creeps slowly above the horizon, it catches the tips of the great red dunes, casting magnificent shadows on the desert floor. Put your camera to work at Dune 45 and Dead Vlei – an enormous clay pan dotted with fossilized trees and flanked by sand dunes that stand out stark against the sky. Your guide will make regular stops on the spectacular ± 60 kilometre drive through the dune corridor down to the Vlei. Admire the mysterious Fairy Circles. At Dune 45, make a stop to view the world's most photographed dune. Further along, a gradual 2,6 kilometer round-trip walk up to Dead Vlei is a must for the healthy visitors. The more energetic have the opportunity to climb to the upper ridge of Big Daddy Dune, one of the highest dunes in this area! You spend time exploring Sossusvlei, enjoy your pre-booked lunch packs on the dunes and continue your adventure to Sesriem Canyon.

Basis

Full Board - Dinner, Bed, Breakfast and Lunch

Activities

Activities with your tour guide on a private basis - Park Fees Included - (Self Drivers do self-guided Excursions - Park Fees Excluded)

- Sossusvlei & Dead Vlei

Explore the natural wonders of the Namib-Naukluft Park. Take on Dune 45 or Big Daddy and marvel at the beauty of Sossusvlei from a higher vantage point.

- Sesriem Canyon Excursion

Sesriem Canyon is located approximately 4.5km from the entrance gate of the Namib-Naukluft National Park. The Tsauchab River has shaped the Canyon over millions of years and it is one of the few places in the area that holds water all year round. Enjoy a walk through the canyon.



Recommended Activities (Excluded)

- Balloon Safari

Before sunrise, you will fly over the oldest desert of the world in a hot air balloon during the cool hours of the early morning. It is a fantastic experience and exhilarating feeling to watch the sunrise in the Namib Desert from a hot air balloon. You sail silently over the reddish dune sea of the Namib. The duration of the excursion is approximately 3½ hours commencing ½ hour before sunrise. The Hot Air Balloon flight itself takes about one hour and ends with an exclusive Champagne Breakfast at the landing spot in scenic nature. Your pilot will present you with a flight certificate before you take a leisurely nature drive back to the pick-up point.

Includes: Beverages & Champagne Breakfast



ALTERNATIVE ACCOMMODATION

- o Sossusvlei Lodge [View iBrochure](#)
 - o Dead Valley Lodge [View iBrochure](#)
-

Day 4: Hotel Schweizerhaus, Swakopmund



Day Itinerary

After breakfast you will drive towards the lovely town of Swakopmund, approx. 5 hours.

You can admire the Kuiseb and Guab passes amazing landscape and breath-taking views as if brought directly from some fiction movie.

Swakopmund is a coastal city and popular beach resort in the Namib desert. The influence of Swakopmund's German colonial history lingers in the architecture and overall "Gemütlichkeit" of the town.

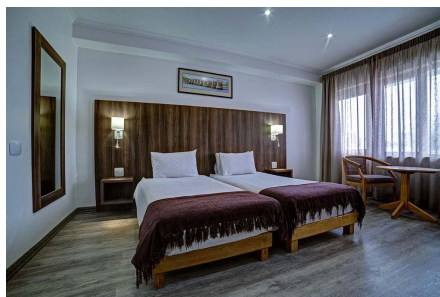
Your stay for the next two days is at Hotel Schweizerhaus, situated in the heart of Swakopmund.

Spend time relaxing in the town of Swakopmund and enjoy lunch at the famous Café Anton, offering traditional German confectionery. Swakopmund is the culinary capital of Namibia. This popular coastal town offers a large diversity in terms of gastronomic delights.

Hotel Schweizerhaus offers charming accommodation with en-suite bathrooms. Located only a few meters away from the beach and Swakopmund jetty and city centre. Warm and friendly atmosphere with a scrumptious breakfast.

Basis

Bed and Breakfast



Activities

Activity with your tour guide on a private basis (Museum Entry Fee Included) - (Self Drivers do self-guided City Tour - Museum Entry Fee Excluded)

- Swakopmund City Tour

Take a stroll through the centre of Swakopmund and admire the historical buildings. Graced with many beautiful, old buildings in a colonial, Bavarian style, the best way to experience this small town is on foot. Visit the Swakopmund Museum to learn more about the town's history.

Day 5: Hotel Schweizerhaus, Swakopmund



Day Itinerary

Early this morning you will experience the amazing riches of the Atlantic Ocean.

Discover the beautiful architecture of this historic town. Admire the Railway Station, declared a national monument in 1972, today serves as a hotel and casino as well as the old Martin Luther Locomotive. Climb up the Woermann Tower for a 360-degree view to discover the old worldly charm of Swakopmund or take a drive through the townships.

Swakopmund is dubbed the activity hub of Namibia. Swakopmund and the surrounding areas offer a variety of interesting activities. Here you will find tons of great things to do and make your choice for your unforgettable adventure. Mola Mola's Kayaking with seals and beach barbecue comes highly recommended. Activities to be booked in advance with Five Stars Tours & Safaris.

Enjoy a drive to Walvis Bay and admire the prolific bird life including masses of Flamingos at the Lagoon. One of the richest and most important wetlands in southern Africa.

Basis

Bed and Breakfast

Recommended Activities (Excluded)

- Kayaking Experience & Beach Barbecue

The Mola Mola Kayaking Combo with Beach Barbecue combines (all) the best of Mola Mola Safaris' experiences in one epic day!

Starting your day on our exhilarating boat cruise, you get to meet the popular pelicans and sassy seagulls joining us on board. A friendly seal or two might pop by on the boat, and if you are really lucky, you will get to experience the wonder of dolphins swimming along in the blue ocean waters. With many surprises along the way, our experienced crew will share interesting information and anecdotes about the area.

Stepping directly onto the beach at Pelican Point Peninsula, your field guide will lead you to the kayak set-up, where you will be provided with your kayaking equipment. Setting off on the water in your kayak, you will be able to explore the nearby waters, you can look forward to inquisitive seals popping up around you, even dolphins and whales may make an appearance!

After your kayaking adventure, you will make your way, either by 4x4 or a beautiful beach walk, to the Mola Mola Beach Braai (barbecue). Soak in the stunning deserted beach setting, while enjoying an authentic Namibian culinary experience.

Energized and restored, you continue by 4x4 to the dunes of the Namib Sand Sea and Sandwich Harbour. Perhaps the most emotional moments of your whole adventure in Namibia. You will be driving between the crashing ocean and ancient sand dunes of the Namib, or perhaps when you get to the top of them, with an endless view of sand and sky, either way, you will see and feel things you couldn't have imagined beforehand, and will never forget afterwards. Exhilarating rides, with experienced guides, over the ancient sand dunes and next to the ocean! Magnificent views and magical moments will take your breath away and complete your day!

Let the cool salty breeze relax your soul as you make your way back to Walvis Bay Waterfront.

Includes:

- Catamaran transfer to Pelican Point.
- Beach Barbecue
- Afternoon 4x4 Sandwich Harbour Excursion with light meal in the dunes
- Drinks



ALTERNATIVE ACCOMMODATION:

- Hansa Hotel [View iBrochure](#)
 - Strand Hotel swakopmund [View iBrochure](#)
-

Day 6: Brandberg White Lady Lodge, Brandberg



Day Itinerary

Today you will say goodbye to the coast and continue 3 hours inland to the camera-friendly Damaraland region of Namibia with massive granite inselbergs and dolerite dykes carved into fantasy shapes by the wind.

Overnight: Brandberg White Lady Lodge [View iBrochure](#)

Brandberg White Lady Lodge is a place where you will feel at home and enjoy a true warm-hearted hospitality and friendship. The Lodge offers stylish chalets and are spread over an area in the river valley, among large, shady trees. Each unit offers a private veranda, electric lights and en suite facilities.

The Ugab river valley with its old trees and green bushes is homestead for a wide variety of game, birds, fascinating reptiles and insects.

Basis

Half Board Plus - Dinner, Bed, Breakfast and Elephant Drive on Day 7



Activities

Activity with your tour guide on a private basis (Park Entry Fee Included) - (Self Drivers do self-guided Excursion - Park Entry Fee Excluded)

- Brandberg - White Lady Painting

The Brandberg is the highest mountain in Namibia and is famous for the White Lady and other Bushman paintings as well as its diverse geology situated in the southern part of rural, unspoilt Damaraland.

ALTERNATIVE ACCOMMODATION:

- Twyfelfontein Adventure Camp (2 Night stay recommended)
- Mowani Mountain Camp (2 Night stay recommended)

[View iBrochure](#)
[View iBrochure](#)

Day 7: Toshari Lodge (Etosha Gateway), Etosha South



Day Itinerary

Early this morning, climb into an open safari vehicle and experience the rush of Africa. After your exhilarating desert elephant experience, it's time to head off to Namibia's premier wildlife viewing destination, Etosha National Park.

Upon your return to White Lady Lodge, you may want to enjoy a light lunch before you depart for a 3,5 hour drive to your overnight accommodation, Toshari Lodge.

Overnight: Toshari Lodge (Etosha Gateway) [View iBrochure](#)

Nestled on an outcrop of dolomite rocks, under a forest of Mopane and white Seringa trees, Toshari Lodge offers affordable but enchanting accommodation close to Etosha National Park. A warm welcome awaits you complimented by a refreshing cold drink on arrival. Absorb the peace and tranquility of the natural African bush as you amble through a blend of manicured lawns and rustic bush gardens to your private room.

Take a refreshing dip in the sparkling pools and enjoy wholesome Namibian cuisine, complemented with herbs and vegetables from the garden and fresh home baked bread, in the tranquility of the striking African lapa with its stunning photographs of local Etosha wildlife.

Basis

Half Board - Dinner, Bed, and Breakfast



Planned Activities (Included)

- Brandberg White Lady Lodge - Desert Elephant Drive (08:00 - 12:00)

Explore the surrounding area and search for desert-adapted elephants. Sightings cannot be guaranteed but you will be informed of your chances on the day of your arrival.

ALTERNATIVE ACCOMMODATION:

- Etosha Village [View iBrochure](#)
- Etosha Oberland [View iBrochure](#)

Day 8: Emania@Etosha Game Lodge, Etosha East



Day Itinerary

Pack your belongings because an impressive 5000-square-kilometre Etosha salt pan is waiting for you. This remote area teems with abundant wildlife such as lions, elephants, black rhinos and giraffes, as well as a variety of birdlife featuring flamingos, ostriches, eagles, hornbills, and owls.

The Park is well equipped with camps, restaurants and swimming pools. Make a stop at Halali Camp where you can visit the famous Moringa Waterhole. The oasis-like natural spring at Goas is also a favourite.

Two Night Stay: Emania@Etosha Game Lodge

[View iBrochure](#)

At Emania, you are always surrounded by views of nature. Explore the warm soul of the African bush from the supreme comfort of your sumptuous accommodation, overlooking a busy waterhole.

Allow Emania to spoil you with a foot massage upon your return from a game drive in Etosha. Taste superior wines in our wine cellar, and enjoy the scrumptious meals of master chefs – privately, if you prefer. Discover true rejuvenation at our foot spa, and luxuriate beside the limpid pool at sunset. Lose yourself in complete tranquillity, and find the true spirit of Namibia.

Basis

Half Board - Dinner, Bed and Breakfast



Activities

Game Drive with your tour guide on a private basis (Park Entry Fee Included) - (Self Drivers do self-guided Game Drive - Park Entry Fee Excluded)

- Full Day Etosha Game Drive

The park is hands-down Namibia's most prolific wildlife destination. With dozens of productive waterholes on the edge of a 5,000 square kilometer salt pan, the park offers some of the most concentrated game-viewing on Earth. Sit at a waterhole and watch as processions of game come to you.

The pan makes up a large area of the eastern side of the park and can even be seen from space.

Day 9: Emany@Etosha Game Lodge, Etosha East



Day Itinerary

Etosha is enormous and distances extremely deceptive, especially if the 60km/h speed limit is taken into consideration. Explore The old fort at Namutoni, a remarkable sight in the desert surroundings. It was virtually obliterated by Owambo warriors at the turn of the 20th century, but rebuilt within a couple of years. Fischer's Pan, a hotspot for migrant waterbirds. Pretty makalani palms sway around waterholes on this side of the park. Many of the area's waterholes have a distinct character and are known for particular sightings; some even have 'resident' leopards (although they can't be guaranteed). Pure bliss is finding a quiet spot to sit and listen and watch and wait for action.

Continue to explore Etosha National Park with your tour guide or on your own or book one of the activities on offer at Emany. Game Drives at Emany are available in the early morning, at sunset, or after dark. Guests are accompanied by experienced guides who will assist them with spotting the animals and regale them with information about the area and its inhabitants.

Basis

Half Board - Dinner, Bed and Breakfast



ALTERNATIVE ACCOMMODATION:

- Onguma Safari Camps [View iBrochure](#)
- Mokuti Etosha Lodge [View iBrochure](#)

Day 10: Ndhovu Safari Lodge, Divundu



Day Itinerary

After your fill of elephants, lions, hyenas, large antelope and many other interesting animals, its time to head off, for yet more spectacular safari action this time in the Caprivi wetlands and a complete contrast to the parched plains and shimmering pans of Etosha. About 5 hours driving.

Two Night Stay: Ndhovu Safari Lodge [View iBrochure](#)

Ndhovu River Lodge enjoys solitude on the edge of the Okavango river. Wake up to the singing of the birds and roaring sound of the river - what more can you ask for, you are on a well-deserved holiday, and you are staying at Ndhovu River Lodge. Your luxury safari tent boasts a private en-suite bathroom with a shower and a bedside view over the river.

The peaceful waterworld of the Okavango provides an ideal experience of the African sunrise and sunset. Enjoy the sights and sounds of the wildlife along the river.

After a long drive, you can relax with your feet up on your personal porch enjoying a glass of your favorite drink, whilst watching the infamous Namibian sun set. Tonight you can drift off to sleep with the calming sound of the Okavango River in the background.

The Popa Falls are definitely not the biggest falls you can find in Namibia, but they do provide a beautiful setting for the sundowner boat cruise.

Basis

Full Board - Dinner, Bed, Breakfast and Lunch



Recommended Activities (Excluded)

- Afternoon River Cruise - 2 hours

Enjoy a guided boat trip on Okavango. Relax with a sundowner and watch hippos, herds of elephants drinking, buffalo and many bird species. With a little luck you can also see a leopard drinking at the river.

- Village Walk

Here you can experience how the locals live in their huts made of sand, wood and cattle dung. One of our lodge employees will show you his own kraal and introduce you to the way of life of the local people. A visit to school and kindergarten is just as important as a short visit to one of the shebeens (local bars). This is not a conventional tour or a so-called living museum, it shows you the real life of the people.



ALTERNATIVE ACCOMMODATION:

- Divava Okavango Lodge & Spa [View iBrochure](#)
 - Shametú River Lodge [View iBrochure](#)
-

Day 11: River View Lodge, Kasane



Day Itinerary

Your drive today is about 5,5 hours. Please depart early after breakfast, taking the border crossing proceedings and timing in consideration.

Three Night Stay: River View Lodge [View iBrochure](#)

Set within immaculately manicured gardens, River View Lodge is an oasis of tranquility located on the banks of the beautiful Chobe River in Kazungula, Chobe District of Botswana. With eleven tastefully appointed rooms & chalets, a private home and charming public spaces set amongst beautifully manicured gardens, River View Lodge is an oasis of tranquility and the perfect location for guests to relax and unwind after exploring the iconic surroundings of the Chobe.

The comfortably appointed Twin Rooms are uniquely designed and well priced. Each features an en-suite bathroom, two comfy single beds and mod cons including air conditioning, ceiling fan, tea & coffee station and laundry services. Enjoy your private verandah with a courtyard view.

Facilities include a swimming pool, bar, lounge and dining area, with delicious international and local cuisine freshly prepared each day. Also on offer are an array of exciting activities including game drives and boat cruises in Chobe National Park.

Basis

Half Board - Dinner, Bed and Breakfast



Expert Tips

VISA REQUIREMENTS FOR BOTSWANA

Most visitors do not require a visa to travel to Botswana. Please consult us for further details.

Day 12: River View Lodge, Kasane



Day Itinerary

The Chobe National Park is famous for impressive herds of elephant and Cape buffalo that seasonally congregate along the winding river banks and open grassy floodplains. Expect to see a diversity of hoofed mammals, including the puku (only seen in this part of Botswana), giraffe, warthog, roan and sable, and keep an eye out for the predators—lion and leopard—that are never far behind. The leopard is particularly prominent along the bank of the river so be sure to scan the tree branches.

The Park covers a massive area in the northern part of Botswana and features a great diversity of habitats including floodplains, swamps and woodland. This variation of natural resources attracts an abundance of animals. The Chobe River forms the northern boundary of the park and is truly one of Africa's most beautiful rivers.

You can explore the most accessible and popular areas in Chobe National Park with your tour guide and discover some of its best kept secrets or book a guided excursion at River View Lodge reception.

Basis

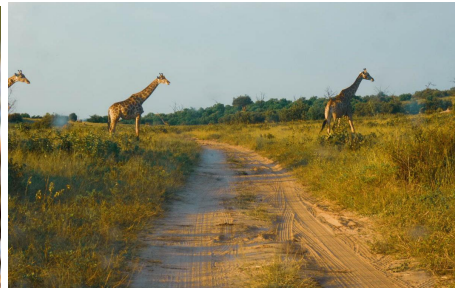
Half Board - Dinner, Bed and Breakfast

Activities

Game Drive with your tour guide on a private basis (Park Entry Fee Included) - (Self Drivers do self-guided Game Drive - Park Entry Fee Excluded)

- Chobe National Park - Game Drive

Along with many species of big game, Chobe National Park boasts the largest concentration of elephant in Africa. The park is also famous for its wonderful riverboat safaris, making Chobe an essential destination for any avid safari enthusiast.



Recommended Activities (Excluded)

- Boat Cruise

Set sail on our spacious boat for a relaxing 3-hour afternoon boat cruise on the Chobe River in Chobe National Park, where you will have the opportunity to see spectacular birdlife, crocodile, hippo, buffalo, antelope and herds of elephant drinking at the water's edge. You may even get a chance to witness herds swimming across the river to Sedudu Island. This is a truly unique experience, and the perfect opportunity to hone your photography skills as you enjoy the sun setting over the water.

- Game Drive (Half Day or Full Day)

Enjoy a game drive in the magnificent Chobe National Park, spanning an impressive 11,000+ square kilometres and home to the world's largest elephant population. Setting out in the cool of the early morning on our spacious and comfortably appointed game viewer, you will have a chance to learn about Botswana's very first national park as you witness a plethora of wildlife such as elephant, buffalo, lion, giraffe and antelope, and if you're lucky even leopard or wild dog. (Lunch included on Full Day Game Drive)

- Kazangula Village Walk

Learn more about the local community surrounding River View Lodge on a complimentary guided walk through Kazungula Village, accompanied by one of the River View Lodge team. Visit the local primary school, view some of the traditional methods used to construct homes and learn about the customs and traditions of the local Basubia people.

- Chobe Crocodile Farm Visit

Conveniently located next door to River View Lodge, Chobe Crocodile Farm is home to 1,000+ crocodiles of varying ages and sizes and offers visitors a chance to learn fascinating information about these prehistoric creatures.

- Fishing

In Kasane, the Chobe River forms the border between Botswana and Namibia and provides for some of the best tiger fishing opportunities in Africa.

Explore the river on a private boat with a local fishing guide as you try your luck at catching a mighty tiger, bream or barbel, whilst respecting the region's catch-and-release policy.

- Implalila Island Village Tour

Located directly across the Chobe River from River View Lodge, Impalila Island in Namibia straddles the intersection where four countries meet, namely Namibia, Zambia, Zimbabwe and Botswana.

Enjoy a 3-hour tour of one of the 25 small villages dotted across the island, learn about the cultural traditions of the island's Subia and Tswana inhabitants, and climb the famous lookout baobab high above the Zambezi floodplain to behold the endless view over all four countries.



Day 13: River View Lodge, Kasane



Day Itinerary

This morning, depart to the main attraction and number one reason to visit this unique destination - The Victoria Falls. A genuine bucket-list destination, Victoria Falls remains one of Africa's most famous tourist towns. Not only does it offer the best views of the iconic falls, but it also has a world-class adventure-tourism scene and wildlife safaris.

Enjoy the sightings of one of the seven Natural Wonders of the world. As you enter the Victoria Falls rainforest you will notice a change in vegetation. Explore the unique rainforest feasting your eyes on magnificent plant and bird life. Make stops at the different viewpoints along the way. You will find yourself in awe as you witness the sheer magnitude of the Victoria Falls. This is truly an inspiring experience.

Victoria Falls Town is a popular tourist town and is compact enough to walk around. It is indeed a special place where you have the privilege of co-existing with wildlife. The Town is an eclectic mix of traditional charm and modern vibrancy all stitched together by a strong community. The town has a large number of talented local artisans from which you can purchase creative arts and crafts, musicians and cultural dance groups providing entertainment, and an overall contagious vibrancy and energy.

Best be arriving here with a camera fully charged, as this is the kind of place that's liable to send you on a pic-snapping frenzy. Raincoats are recommended.

A visit to the historical railway bridge is an integral part of any complete Victoria Falls experience. Visit the bridge museum and stroll along the bridge while learning about its history and taking in views of Victoria Falls, before returning to the lodge in the afternoon.

Basis

Half Board Plus - Dinner, Bed, Breakfast and Planned Activities

Expert Tips

VISA REQUIREMENTS FOR ZIMBABWE

Obtainable upon arrival at the border post. (Paying in cash is recommended). It is advised that clients carry the exact amount.

Single Entry = US\$ 30 Per Person

Planned Activities (Included)

- River View Lodge - (Unguided) Day Trip to Victoria Falls

Located a mere one-hour drive away, a visit to the awe-inspiring Victoria Falls is a must during your time in Chobe.

Including a return transfer from River View Lodge to Victoria Falls, enjoy an unguided tour of the falls, visit the local curio market in nearby Elephant Walk.

Make the most of your time in Chobe with a once-in-a-lifetime visit to one of the natural wonders of the world.

Day Trip Excludes:

VICTORIA FALLS ENTRY FEES

US\$ 50 Per Person



Recommended Activities (Excluded)

- Shearwater Helicopter Flights

After take off you will fly out over the Victoria Falls where our pilot will fly left and right hand circuits over the Victoria Falls in both directions. Continuing the flight downstream over the Batoka Gorge, experience the natural beauty of this awe-inspiring dramatic feature, following the mighty Zambezi River, as it carves its way through the steep cliffs. As you head back you fly over the upper Zambezi River & the National Park, home to a wide variety of wildlife species.

- Lookout Cafe

Afterwards, lunch at the The Wild Horizons Lookout Café, adored by many, highly recommended. It is a fusion of spectacular views and exquisite food.



ALTERNATIVE ACCOMMODATION:

- Chobe Safari Lodge [View iBrochure](#)
 - Chobe Bakwena [View iBrochure](#)
-

Day 14: Nata Lodge, Nata



Day Itinerary

Enjoy breakfast and depart for Nata.

Overnight: Nata Lodge [View iBrochure](#)

Nata Lodge is set in an idyllic location dotted by Mokolwane palms on the edge of these Botswana pans.

Accommodation consists of thatched chalets built on stilts in natural African style and custom-designed Meru tents on wooden decks which feature en-suite bathrooms and outdoor showers. Enjoy à la carte meals at the restaurant, and cool off in the lodge's swimming pool amid lush gardens.

Basis

Half Board - Dinner, Bed and Breakfast



Activities

Sanctuary drive with your tour guide on a private basis (Park Entry Fee Included) - (Self Drivers do self-guided Drive - Park Entry Fee Excluded)

- Nata Bird Sanctuary

The Nata Bird Sanctuary is part of the Makgadikgadi Pans Important Bird Area (IBA) and is one of the premier birding destinations in Botswana. The area is famous as a feeding ground for a globally threatened flamingo. There are over 300 bird species recorded in the area.



Day 15: Crocodile Camp Safari & Spa, Maun



Day Itinerary

Continue your journey 4 hours towards Maun.

Two Night Stay: Crocodile Camp [View iBrochure](#)

Crocodile Camp Safari & Spa, situated on the banks of Thamalakane River, is an oasis for those who love the Safari experience. Croc Camp, with a distinguished heritage, has been a palace of adventures for visitors since 1946. Attention to detail ensures individually decorated rooms for African styled comfort in every space.

The camp boasts a restaurant, dining room, spa, fitness centre, pool (refresh yourself by taking a nice dip or just sunbath) and the famed Croc Rock Bar. Mealtimes at Crocodile Camp are a sociable affair and guests are treated to sumptuous dishes, fresh produce and daily baked confectionery from the kitchen.

Basis

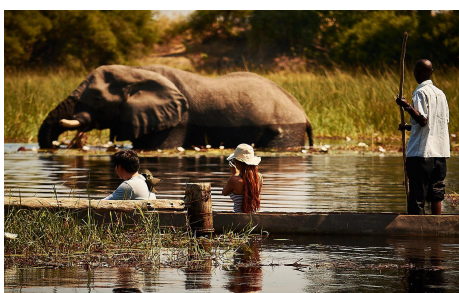
Half Board - Dinner, Bed and Breakfast



Recommended Activities (Excluded)

- Mokoro Safaris

No activity is more synonymous with the Okavango Delta than a mokoro trip. Glide silently along the hippo highways and elephant byways of the ancient Khwai River, historically, the only form of transport of the River Bushmen. Explore this unique inland delta deserving of its World Heritage Site status. Learn about the fascinating ecology from our River Guides who navigate your journey through the tranquil watery wilderness.



Day 16: Crocodile Camp Safari & Spa, Maun



Day Itinerary

Crocodile Camp offers a range of activities for all safari lovers. Guests can enjoy a full day trip in the wilderness of Moremi Game Reserve. Our professional guides will navigate the bushes, creating lots of opportunities to view elephants, lions and others in their natural habitat.

Alternatively, guests may tour the rivers on the intimate mokoro or our boats. With our affiliates, guests can be booked for scenic flights and helicopter rides to enjoy views of the Okavango Delta from the sky.

The Moremi Game Reserve covers much of the eastern side of the Okavango Delta and combines permanent water with drier areas, which creates startling, beautiful, and unexpected contrasts. In Moremi, one gets marvelous views of the savannah game — lions, cheetahs, wild dogs, and a wide variety of birds. Moremi also has thickly wooded areas that are home to beautiful leopards.

Continue to explore this magnificent area with your tour guide, on your own or book a guided tour at Crocodile Camp.

Basis

Half Board - Dinner, Bed and Breakfast

Activities

Game drive with your tour guide on a private basis (Park Entry Fee Included) - (Self Drivers do self-guided Game drive - Park Entry Fee Excluded)

- Moremi Game Drive

Game drive and game viewing are the main activity. The Moremi Game Reserve covers much of the eastern side of the Okavango Delta and combines permanent water with drier areas, which creates startling, beautiful, and unexpected contrasts. In Moremi, one gets marvelous views of savannah game — lions, cheetahs, wild dogs, and a wide variety of birds. Moremi also has thickly wooded areas that are home to beautiful leopards.



ALTERNATIVE ACCOMMODATION:

- Mochaba Crossing [View iBrochure](#)
- Thamalakane River Lodge [View iBrochure](#)

Day 17: Symponia Guesthouse, Ghanzi



Day Itinerary

Your overnight accommodation is located about 300 km west of Maun, about 3,5 hours, enroute to Namibia.

Ghanzi is the administrative centre of Ghanzi District in western Botswana. The town is located in the middle of the Kalahari Desert, close to the Namibian border, and is made up of several different ethnic groups living harmoniously side-by-side. It was formerly a sleepy border outpost, but new life was breathed into Ghanzi with the completion of the Trans Kalahari Highway in 1998. It has since reinvented itself as a bustling town that is touted as the 'Capital of the Kalahari'.

Overnight: Symponia Guesthouse [View iBrochure](#)

Symponia Guesthouse is a brand new guesthouse, built on the Maun side of Ghanzi. (7km). The charming property boasts 8 spacious double rooms with huge, beautiful bathrooms, air conditioning, DSTV, WiFi and a fridge.

Basis

Half Board - Dinner, Bed and Breakfast



Recommended Activities (Excluded)

- Gantsi Craft – Arts & Crafts in Ghanzi

Gantsi Craft has been supporting more than 800 local artisans from the San community, the majority of whom are women. Visitors are given the opportunity to observe a group of these women at work. It is undoubtedly one of the best craft shops in the region.

Day 18: Sandune Game Lodge, Kalahari North



Day Itinerary

Today, your journey today takes you back to Namibia, about 5 hours. Depart early, after breakfast.

Sandune Game Lodge is a 4600 ha fenced game farm with more than 1000 animals & more than 13 species, situated in the Kalahari Forest area.

Sandune's air-conditioned rooms feature full en-suite bathrooms with luxurious amenities, decorated to reflect Africa's essence. Each room is equipped with a Nespresso machine for early morning coffee.

The comfortable main dining area, covered under shade trees with a panoramic view on a waterhole can be enjoyed 24 hours. Night game viewing is possible from this area, where herds of Oryx, Giraffe, Impala, Zebras and Sables harvest from the gardens. Sandune Lodge offers world-class cuisine and exceptional hospitality.

Explore Sandune's breathtaking scenery and diverse natural environment on one of their outdoor adventures, offering horse riding, game drives and exploring the Kalahari Forest with once in a lifetime views and tranquillity like no other.

This evening, relax and enjoy good company after a long day's drive.

Overnight: Sandune Game Lodge

[View iBrochure](#)

Basis

Half Board - Dinner, Bed and Breakfast



Day 19: End of Itinerary

Day Itinerary

You have come to the end of your incredible journey. Enjoy the hues of Africa's golden morning light for one last time before heading back to reality, fully refreshed and a lifetime of wonderful memories. Enjoy breakfast and drive about 3 hours to the Hosea Kutako International Airport in time for your flight.

The final stretch of your road-trip, so turn up the volume and sing your heart out. Ignore the weird looks of other travelers and your passengers.

Basis

Bed and Breakfast

Price

19 DAYS - NAMIBIA, VICTORIA FALLS & BOTSWANA (2023)

- PRICE FROM: NAD 63,350 (Per Adult Sharing)
- NAD 126,700 = TOTAL TOUR PRICE

Please inquire about private-guided tour price

NOTES:

- All tours are tailor-made according to budget and personal preferences
- Self-Drive or Private-Guided Options Available
- Lower prices are available for more than 2 people sharing
- Prices are seasonal (Low Season and High Season)



Included

INCLUDED IN SELF-DRIVE SAFARI

- All Accommodation (Subject to Availability at time of Booking)
- Meals mentioned in itinerary
- Rental Vehicle with Full Insurance
- Vehicle Clearance Certificates
- VIP Meet and Greet
- Airport Transfer
- 24-hour support
- Comprehensive tour file with detailed itinerary, map, route descriptions, booking vouchers, contact numbers and useful information
- All Taxes/VAT

INCLUDED IN GUIDED SAFARI

- All Accommodation (Subject to Availability at time of Booking)
- Meals mentioned in itinerary
- Rental Vehicle with Full Insurance
- Vehicle Clearance Certificates
- Cross Border Permits (Botswana & Zimbabwe)
- Visa Fees for Driver/Guide
- VIP Meet and Greet
- Airport Transfer
- 24-hour support
- Comprehensive tour file with detailed itinerary, map, route descriptions, booking vouchers, contact numbers and useful information
- All Taxes/VAT
- Planned Activities
- Fuel (EXCLUDING FUEL SURCHARGE FOR 2023, IF APPLICABLE)
- Park Entry Fees
- Professional Tour Guide - Including activities with your Tour Guide on a Private Basis as per the Program

Excluded

EXCLUDED IN SELF-DRIVE SAFARI

- International & Domestic flights
- Personal Travel Insurance
- Entry Visas
- Gratuities
- Government imposed increase of taxes
- Meals & Drinks not mentioned in itinerary
- Recommended Activities
- Professional Tour Guide
- Fuel
- Cross Border Permits (Botswana & Zimbabwe)
- Applicable vehicle excesses
- Fines, fine handling fee
- Lost key call out fee, tow-in/recovery service if not mechanical or accident related, any costs resulting from negligence

EXCLUDED IN GUIDED SAFARI

- International & Domestic flights
- Personal Travel Insurance
- Entry Visas
- Gratuities
- Government imposed increase of taxes
- Meals & Drinks not mentioned in itinerary
- Recommended Activities

Terms and Conditions

Itinerary Terms and Conditions

The exciting news we have been waiting for as a sector is now here!

All ports of entry have been opened. Visitors will no longer be required to present a negative COVID19 PCR certificate or proof of vaccination at the port of entry. Wearing of face masks is no longer mandatory in public places and there are no longer any enforced COVID rules within the country.

Exact requirements per country can be found on the IATA website which is regularly updated and that all airlines are following.

For official entry requirements check at - <https://www.iatatravelcentre.com/world.php>

BOOKING CONFIRMATIONS

- A 25% deposit is required to confirm a provisional booking.
- For confirmed bookings the balance of payment is required 60 days prior to travel.
- If booking confirmation takes place within the 60-day period, the full amount is payable on confirmation of booking.
- Booking cancellations are subject to the cancellation policy below.
- No booking will be cancelled or amended unless notified in writing.

Please Note: Payments must be made free of bank charges. Bank charges are for the account of the payer. Payment must be made in the currency invoiced.

BOOKING CANCELLATION POLICY

The following cancellation policy applies:

- The Conservation, Community and Reserve Fee is forfeited; and
- 25% cancellation fee (deposit forfeit) from confirmation to 59 days prior to travel; or
- 50% cancellation fee if cancelled 58 – 30 days prior to travel; or
- 100% cancellation fee if cancelled 29 days or less prior to travel or any no-shows.

If a confirmed booking cannot travel within the Rolling 60-day Period due to the Force Majeure Event the following applies:

- Booking may reschedule to a future date however will be subject to annual and seasonal rate changes where applicable. Rescheduling can take place up to the date of arrival.
- If not able to reschedule, cancellation fees will be waived up to date of arrival. Please note our Conditions relating to the forfeiture of the Conservation Contribution and the Conservation, Community and Reserve fee.

INSURANCE

It is a condition of booking, that the guests accept sole responsibility to ensure that they carry the correct fully comprehensive travel and medical insurance to cover themselves, as well as any dependents/travelling companions. This insurance should include cover in respect of, but not limited to, the following eventualities: delay, cancellation or curtailment of the safari, emergency evacuation expenses, medical expenses, personal injury, illness (including but not limited to COVID-19), loss of support, death and disability, hometown repatriation costs, consequential loss, damage/theft/loss of personal baggage, money, and belongings. Guests will be charged directly by the relevant service providers for any emergency services they may require and may find themselves in a position unable to access such services should they not be carrying the relevant insurance cover.

RENTAL VEHICLE

Group O - Toyota Land Cruiser 4x4 – Double Cab or Similar





WHY TRAVEL WITH A PRIVATE GUIDE?

Your naturalist guide will quickly turn a normal safari into a life enriching journey, creating a deeper understanding and appreciation for the incredible places and people that you visit. The guide is the link between you and the intricacies of the natural world, sharing their knowledge with enthusiasm and humour. You are taken on a journey through some of the world's most beautiful wild places, encountering wildlife spectacles and engaging with age-old authentic cultures while receiving detailed interpretation as offered by our highly trained naturalist guide. Throughout this experience, you are wrapped in warm and caring hospitality.

Being native to Namibia, our guides are welcomed as friends or family everywhere they go, thus ensuring authentic and life enriching journeys. These often result in guests becoming personal friends of both our guides and the people that they visit.



IMPORTANT INFORMATION

- o Passports need to have at least 6 blank pages and be valid for 6 months after travel date.
 - o Travel insurance is a requirement and must be purchased prior to travel. Travel insurance must be comprehensive and cover full air evacuation and repatriation, in the unlikely event of an emergency.
 - o Protect your phone and electronic equipment, as it might get wet. A waterproof pouch is the best option if you want to take pictures with your phone.
 - o Bring a light raincoat or umbrella and a pair of light rain boots or comfortable closed shoes.
 - o Zimbabwe and Zambia don't fall under the yellow fever zone. You do not need a yellow fever vaccination.
 - o Ensure you have local currency or US Dollars on you before you visit Victoria Falls.
 - o Credit or debit cards are accepted at better lodges and restaurants. But, don't expect to use them at local shops or bars as none of their card facilities work.
-



COVID-19 PROTOCOLS

The National Guidelines for Aviation for COVID-19 have been set to ensure the safety of both travellers and airport staff. These are in addition to temperature testing, social distancing, sanitisation, and wearing of masks.

NAMIBIA

Currently open to all travellers. Below protocols must be followed:

- Proof of Vaccination and RT-PCR tests on arrival are no longer requirements for non-Namibian travellers.
- Travellers may be requested to undergo a further PCR test on arrival if officials believe they are symptomatic. Symptoms include, but are not restricted to, a fever and a dry cough. Travellers are advised to carry their own thermometer
- Should travellers be requested to carry out the PCR test on arrival, this will be at a cost of USD 70.
- Results will be available after a period of at least 2 hours. Should the PCR be negative a traveller is free to continue without quarantine
- If the PCR is positive, the traveller will be required to undergo a quarantine period of up to ten days or until such time as a negative test is received. This will be at the traveller's own expense. This can be done at approved private facilities
- Travellers must acquire travel insurance that covers medical care or in the event of an unexpected stay in Namibia

ZIMBABWE

Currently open to all travellers. Below protocols must be followed:

- If you're fully vaccinated, you can enter Zimbabwe by presenting a certificate of proof of vaccination (2 doses) by means of one or more of the World Health Organisation-approved vaccines. Alternatively, you can present a valid negative test certificate of a COVID-19 PCR test taken no more than 48 hours prior to departure.

BOTSWANA

Currently open to all travellers. Below protocols must be followed:

- Fully Vaccinated (Negative PCR test not required) Please show proof of Vaccination Certificate
- Unvaccinated (Negative PCR test required)

ZAMBIA

Currently open to all travellers. Below protocols must be followed:

- Persons who are fully vaccinated do not require any form of negative Covid-19 test results but shall be required to provide proof of full vaccination status.
- International travelers who are not fully vaccinated MUST show proof of a Covid-19 PCR test for a sample collected within 72 hours before departure from the country of origin.

Visitors will be required to present a copy of their tour itinerary upon arrival.

It is absolutely essential for guests to take out, prior to travel, comprehensive travel insurance with emergency medical evacuation cover, catering for any possible eventualities during their stay.

IMPORTANT NOTICE: Whilst we take every care to ensure the information contained herein is accurate, we cannot in any manner or form guarantee the accuracy and correctness thereof. The information is taken directly from relevant country government sources and the IATA travel centre, and can change at any time and without notice. You are therefore advised that any information contained herein should not be construed as a representation made by Five Stars Tours & Safaris and it remains your sole and absolute duty to double-check current information at the time of creating an itinerary.

PREPARED AND PRESENTED BY

MANDY STRAUSS

FIVE STARS TOURS & SAFARIS

+49 151 5740 3475

tours@fivestars-safaris.com

www.fivestars-namibia.com



