

DISCOVER THE OKAVANGO DELTA

& Beyond Sandibe Okavango Safari Lodge

The beautiful organic architecture of the lodge blends seamlessly with one of Africa's most breathtaking landscapes.



DISCOVER THE OKAVANGO DELTA
&Beyond Sandibe Okavango Safari Lodge

Why stay?

1 EXCEPTIONAL GAME VIEWING

Situated on a diverse, wildlife-rich, private Big Five concession, the lodge has exclusive traversing rights over a vast 22,500 hectares (55,600 acres) of wildlife land bordering the Moremi Game Reserve. Enjoy iconic wildlife encounters on foot and from a vehicle.

2 CUSTOMISABLE SAFARI VEHICLES

Vehicle enhancements include bucket seats, customisable seat configurations (a maximum of 6 guests), padded roll bars, charging points for cameras and equipment as well as camera bean bags on clamps.

3 UNIQUE LODGE DESIGN

The luxurious guest area is a masterpiece, architecturally designed to resemble a giant scaled pangolin at rest, while each suite resembles the nest of a golden weaver.

4 INSPIRED LOCAL HOSPITALITY

Our staff will be on standby to take care of your every need and ensure you leave with memories to last a lifetime. You will arrive as friends and leave as family, after experiencing a truly authentic safari in Botswana.

5 SCENIC HELICOPTER TRANSFERS

On-site helicopter for ultra-efficient and convenient transfers as well as scenic safari flights over the Delta. View the spectacular panorama below as the incredible diversity and amount of wildlife becomes clear from above.



The best bucket list trip ever! We were 200% satisfied with &Beyond and everyone we met who took such great care of us. ”

&BEYOND GUEST

DISCOVER THE OKAVANGO DELTA
&Beyond Sandibe Okavango Safari Lodge

Lodge amenities



1

MASSAGE SALA & GYM

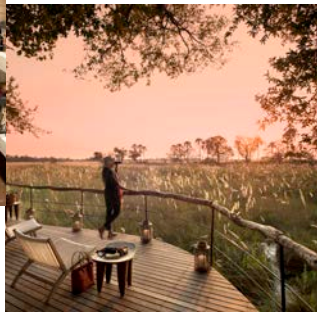
Indulge in one of our many relaxing wellness treatments in the intimate massage sala or work off the delicious lodge cuisine in a well-equipped gym with treadmill, rowing machine, stationary bicycle and weights.



2

SAFARI SHOP

Within the lodge's beautiful Safari Shop, expect to find a range of quality, handpicked handicrafts and fashion wear that showcase the very best of vibrant Botswana. These unique items provide the perfect memento of your stay in Africa.



3

VIEWING PLATFORM

The upstairs bar and lounge extends along an elevated walkway to a viewing platform. Guests are invited to linger over sundowners or a morning cappuccino, as they look out over a set of spectacular Delta views and a sea of papyrus.



4

SOLAR POWER PLANT

Hybrid solar power plant (the first in the Delta back in 2014) has enabled the lodge to operate on an energy ratio of 70% renewable: 30 % non-renewable energy.



5

BOMA

After your evening game drive, enjoy a pan-African al-fresco dinner under the stars and around the open blazing fire in the lodge's traditional boma.



6

INTERACTIVE KITCHEN

The central interactive kitchen brings a cheerful atmosphere to the lodge, allowing guests to participate in making their own gourmet pizza and burger if they wish.

DISCOVER THE OKAVANGO DELTA
& Beyond Sandibe Okavango Safari Lodge

Lodge amenities



7

BUSH BANQUETS

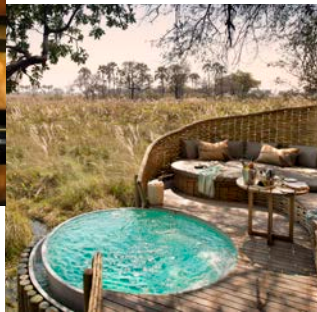
We are completely flexible. You may wish to enjoy a meal out in the bush while out exploring the concession with your guide and tracker.



8

EXECUTIVE CHEF

Our food is locally inspired, sustainable and wholesome. We continue to push the boundaries in terms of lodge dining. Each dish is packed with flavour.



9

PRIVATE PLUNGE POOLS

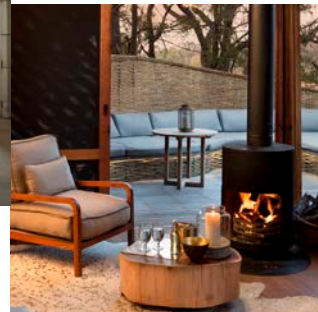
Each suite boasts its own glorious private plunge pool for refreshing dips between game drives.



10

PERSONAL BARS

Not only are you able to enjoy a full bar at your disposal at any time, your suite also boasts a private mini-bar with a selection of Musgrave gins, non-alcoholic Vermont VerGin spirits, complimented with Fever Tree mixers.



11

COSY FIREPLACE

Keep yourself warm and cosy in front of a blazing fireplace. Your suite will become like a cocoon during the cooler winter months.



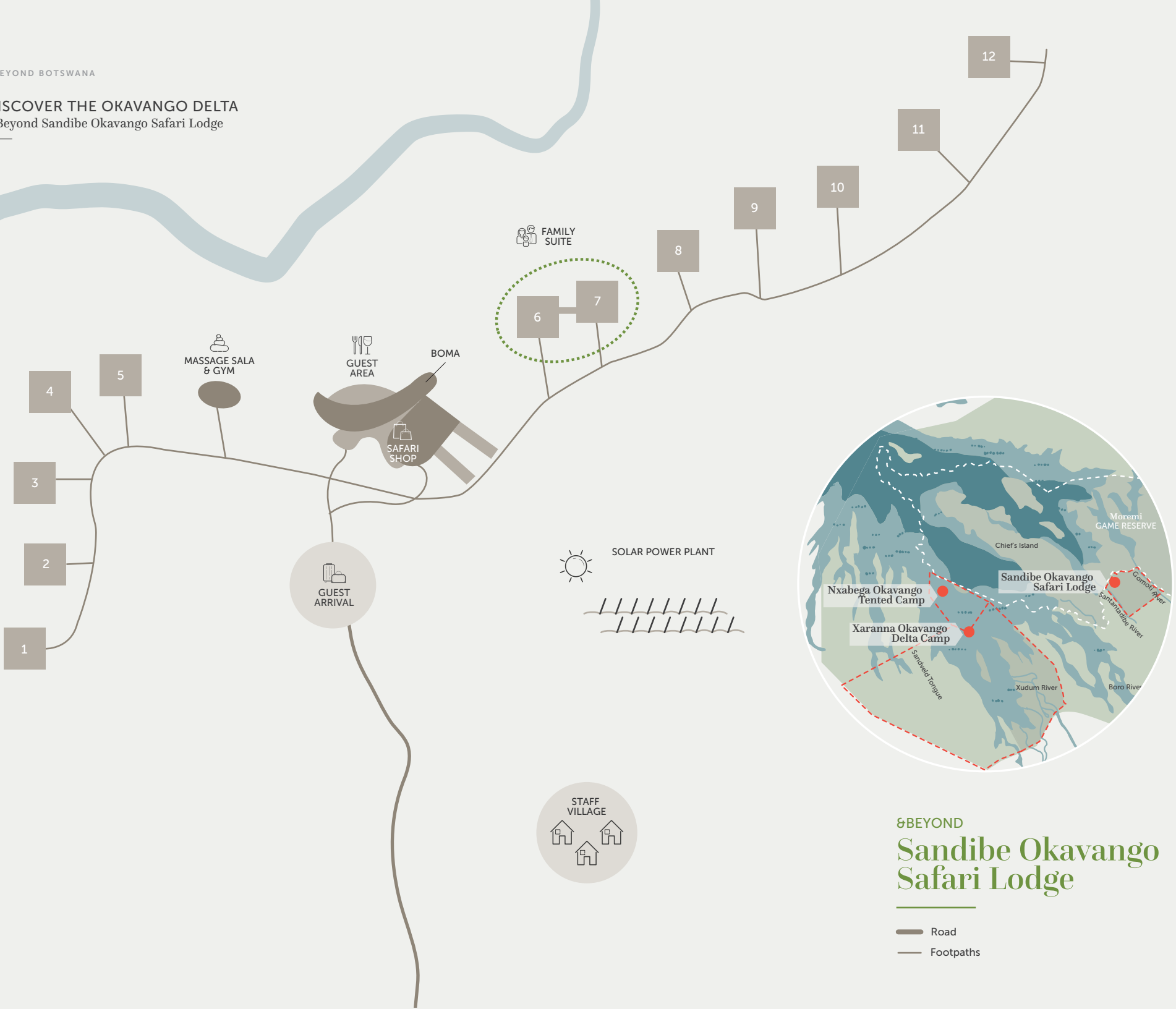
12

SAFARI ACCESSORIES

Each suite comes with a complimentary pair of Swarovski Optik EL Range 10x42 binoculars, for your use through the duration of your stay and a take-home Guides' Journal featuring wildlife illustrations and maps.

BEYOND BOTSWANA

DISCOVER THE OKAVANGO DELTA & Beyond Sandibe Okavango Safari Lodge



BEYOND Sandibe Okavango Safari Lodge

— Road
— Footpaths

DISCOVER THE OKAVANGO DELTA
&Beyond Sandibe Okavango Safari Lodge

Lodge overview

LODGE

Maximum number of guests	24
Number of rooms	12
Family accommodation	Children of all ages are welcome. 1 family suite (2 suites linked by an enclosed walkway)
WILDchild programme	Yes
Pilot / Guide accomodation	No
Room types	12 suites (including one family suite)
Distance between rooms	Approx. 30m (98ft)
Check in / Check out times	12 - 14h00 / 11h00
Lodge closure	Open year round

DINING

Food / Dietary options	Kosher food not available
Private butler service	Yes
Plated service	Yes
Private dining	Yes

PAYMENT TYPES ACCEPTED

Credit cards accepted	Visa, MasterCard
Currency	All major currencies accepted

FACILITIES

Power	220v AC
Internet access	Yes, Wi-Fi in guest suites only
Wine store or cellar	No
Boma	No
Bar	Yes
Interactive kitchen	Yes
Swimming pool	Private plunge pools
Wellness offering	Healing Earth treatments offered in massage sala or in-room
Fitness	Gym with treadmill, rowing machine, stationary bicycle and weights
Conference facilities	Yes
Weddings & blessings	No
Wheelchair access	No
Complimentary laundry service	Yes
&Beyond Safari Shop	Yes

OTHER

Vehicle type	Customisable safari vehicle (Max 6 guests per vehicle)
Private 4x4 safari vehicle	Yes, depending on availability and at additional cost

DISCOVER THE OKAVANGO DELTA
& Beyond Sandibe Okavango Safari Lodge

Inclusions

RATE INCLUDES

Accommodation	✓
Three meals daily	✓
Soft drinks, house wines, local brand spirits and beers, teas and coffees and refreshments on game drives	✓
Laundry	✓
Safari experiences (game drives, walking safaris, photography, stargazing and birding)	✓
Africa Foundation Community Visit	✓
Back-of-house Sustainability Tour	✓
Guides' Journal with illustrations of fauna and flora to record your sightings	✓
Concession map with Sandibe's illustrated Star Birds checklist	✓
Emergency medical evacuation insurance	✓
VAT	✓
Transfers to and from the lodge airstrip	✓
Park fees	✓

RATE EXCLUDES

Administration fee	✗
Telephone calls	✗
Safari shop purchases	✗
Gratuities	✗
All items of a personal nature	✗
Champagne, cognacs, fine wines, premium brand spirits and cigars	✗
Private vehicle (Available at an additional cost)	✗
Scenic Helicopter Flights	✗

NOTE: Unmanned Aerial Vehicles: Please be advised that the use of unmanned aerial vehicles (drones) are prohibited in the conservation areas we manage, until such time as their impact on wildlife and anti-poaching initiatives can be assessed. This rule will apply throughout Africa, as our partners in various countries and regions have adopted a similar stance.



A scenic view of the Okavango Delta. In the foreground, a motorboat with a light-colored canopy is on the water, carrying several people. In the middle ground, two elephants are partially submerged in the water, surrounded by tall reeds. The background is a dense line of green trees under a blue sky with scattered white clouds. The water is calm, reflecting the boat and the surrounding landscape.

DISCOVER THE OKAVANGO DELTA

Adventures of a lifetime

Celebrated for its winding waterways, glassy lagoons and remote islands teeming with wildlife, its no surprise that nature lovers flock to the Delta.

DISCOVER THE OKAVANGO DELTA

Adventures of a lifetime

Land and sky experiences

A Botswana safari is an experience of a lifetime, and there is so much on offer in the Delta – from twice-daily game drives and walks to the spectacular star-studded night skies.



1

SAFARI GAME DRIVES

Enjoy twice-daily game drives that set off early in the morning or late in the afternoon (continuing after nightfall), in the company of local career guides and trackers who will do their best to ensure that all your wishes are met. You will be encouraged to not only go in search of the Big Five but to also appreciate the wonderful array of flora and fauna dotted across the Okavango Delta.



2

WALKING SAFARIS

If you're looking for a thrilling view-from-the-ground, this is your chance to discover a multitude of natural wonders in the company of your experienced safari guide. Tread in the tracks of the Delta wildlife, breathe in the scent of crushed wild grasses, and feel your senses come alive.



3

FAMILY SAFARIS

BEYOND offers a host of entertaining activities for children aged 6–12 years, bringing alive the magic of Botswana. Whilst on a family safari, you can rest assured that your children will always be safe and well cared for (both during activities and at the lodge). Every minute is supervised by our guides and lodge staff, who provide hours of amusement and invaluable information to the children in their care.



4

PRIVATE SAFARIS

Tailored especially for you, this exclusive safari allows you to explore the Delta with your very own dedicated guide, tracker and vehicle. Game drives can be as long or as short as you wish, covering your personal interests, from the insect kingdom to great herds of buffalo or prides of lion. Meals can be savoured at the camp, or alternatively, enjoyed away from the lodge.

DISCOVER THE OKAVANGO DELTA
Adventures of a lifetime

Land and sky experiences



5

PHOTOGRAPHY

Our expert guides will use their extensive experience in wildlife behaviour to try get you into the best positions to get the shot of a lifetime. At 8Beyond Sandibe Okavango Safari Lodge, our customisable vehicles come with charging points for cameras equipment and camera bean bags on clamps providing excellent support for any camera and lens combination.



6

SCENIC HELICOPTER FLIGHTS

Take to the skies for a birds-eye view over the Okavango Delta's signature of blue waters against the green and brown tapestry of papyrus fringed islands and open floodplains. From these heights, even those far-flung and inaccessible corners of the Delta can be seen, fully showcasing the incredible diversity of landscapes and wildlife.



7

STARGAZING

Gaze at the Southern Hemisphere's night skies in complete awe. With little to no light pollution in the area, you will be amazed by what is above. Take a closer look at the planets and constellations with your ranger while out on a drive or sit out on your private deck at night and see if you are able to spot a lucky shooting star.



8

BIRDING

Botswana is a top Africa birding destination, with the waters in the Okavango offering great year-round diversity. Guests flock to the area in search of several specials such as the Pel's fishing owl, African pygmy goose, lesser jacana, slaty egret to mention just a few. Our knowledgeable guides enjoy the challenge of finding your favourites.

DISCOVER THE OKAVANGO DELTA

Adventures of a lifetime

Impact experiences

Everything we do at &Beyond is centred around our core ethos of “Care of the Land, Care of the Wildlife and Care of the People” and we strive to provide a truly authentic experience.



1

AFRICA FOUNDATION COMMUNITY VISIT

Enquire about this feel-good community excursion to the Sexaxa Village, outside Maun, on the day of your departure to see the work that &Beyond and Africa Foundation have completed at the Sexaxa School. It is with our guest's support that this inspiring project has flourished, and now young children no longer need to walk 5km (3mi) to get to and from school each day. Please note that this excursion depends on your departure time..



2

BEHIND-THE-SCENES SUSTAINABILITY TOUR

We would love to show you our sustainability story. From installing the first solar power plant in the Okavango Delta at &Beyond Sandibe Okavango Safari Lodge in 2014 in 2015 to using a solar photovoltaic (PV) hybrid system at &Beyond Xaranna Okavango Delta Camp, the first of its kind in Botswana, with Tesla Powerpack Battery Energy Storage System 'green' technology. Audits, heating systems, water bottling plants, waste-water management – we have nothing to hide.



3

LOCAL CRAFTS

Browse through our Safari Shop and expect to find a range of quality, handpicked handicrafts and fashion wear that showcase the very best of Botswana. Peruse the shop's range of excellent eco-souvenirs, where a portion of the proceeds raised benefits a local community or conservation initiative. Don't leave without stunning hand-woven baskets or intricate handcrafted Bushman décor.

DISCOVER THE OKAVANGO DELTA
Adventures of a lifetime

Seasonal highlights

YEAR-ROUND ACTIVITIES

✓ Safari game drives	✓ Photography	✓ Wellness treatments**
✓ Walking safaris	✓ Scenic helicopter flights**	✓ Africa Foundation community visit
✓ Family safaris	✓ Stargazing	✓ Back-of-house Sustainability tour
✓ Private safaris**	✓ Birding	

TIMING IS EVERYTHING

	JAN	FEB	MAR	APR	MAY	JUN	JUL	AUG	SEP	OCT	NOV	DEC
Mokoro adventures*	Nxa	Nxa	Nxa	Nxa	Nxa,Xar	Nxa,Xar	Nxa,Xar	Nxa,Xar	Nxa,Xar	Nxa,Xar	X	X
Motorised boat cruises*	Nxa	Nxa	Nxa	Nxa	Nxa,Xar	Nxa,Xar	Nxa,Xar	Nxa,Xar	Nxa,Xar	Nxa	Nxa	Nxa
Catch-and-release fishing*	X	X	X	Nxa	Nxa	Nxa,Xar	Nxa,Xar	Nxa,Xar	Nxa,Xar	Nxa	Nxa	Nxa

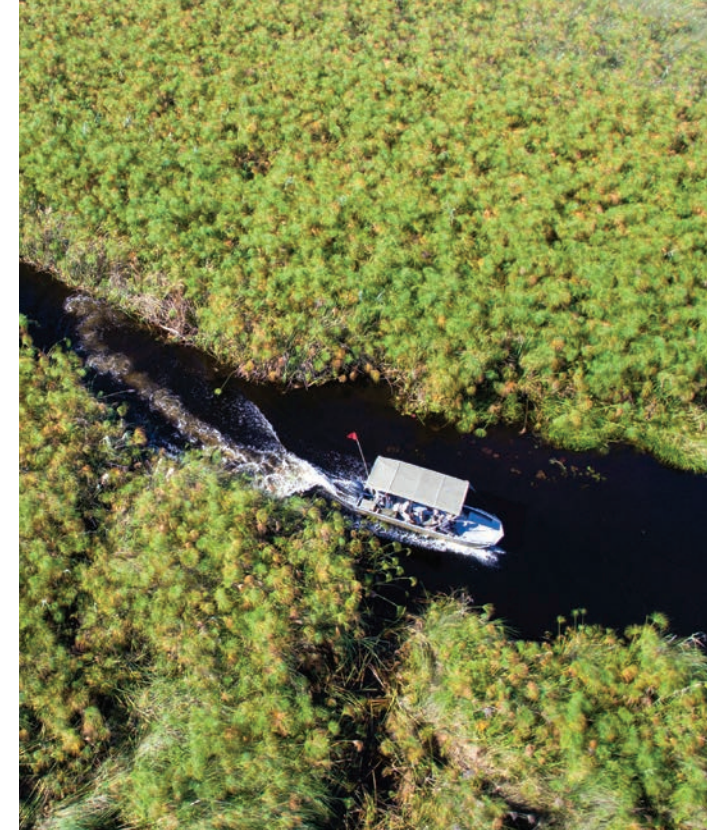
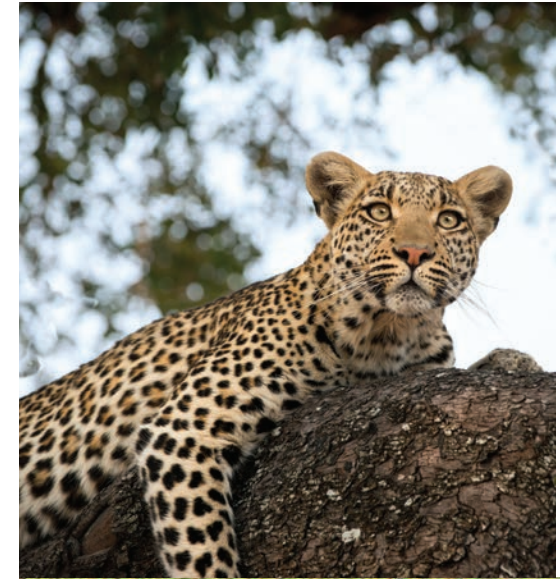
KEY | Nxa - &Beyond Nxabega Okavango Tented Camp; Xar - &Beyond Xaranna Okavango Delta Camp; X - Not available

*This information is given on historical data and can only be used as a reference because water levels change annually. Weather patterns are unpredictable.

** This activity is at an additional cost

It is fair to say that we have been mind-blown by the overall experience. We loved it all and really felt like family. ”

&BEYOND GUEST



DISCOVER THE OKAVANGO DELTA

Adventures of a lifetime

WILDchild

The Okavango Delta is a wonderful playground for little ones to explore. Beyond offers a host of entertaining activities for children aged 3–12 years, bringing alive the magic of Botswana. Whilst on a family safari, you can rest assured that your children will always be safe and well cared for (both during activities and back at the lodge). Every minute can be supervised by our guides and lodge staff, who provide hours of amusement and invaluable information to the children in their care. Special children’s menus are available and childminding services are available at an additional cost.

CHILD POLICY

The below policy applies to children on shared game drives and water activities*.

0-2 years	Not permitted on game viewing activities
3-5 years	Not permitted on game viewing activities; however, shortened children’s game drives are available on request
6 years and older	Permitted on game drives (at the discretion of the camp manager)
12 years and older	Permitted on motorised boat cruises
16 years and older	Permitted on walking safaris and mokoro adventures

* A private vehicle can be booked when staying with Beyond (subject to availability and at an additional cost) allowing children of all ages to participate in a game drive. Access to sightings will be at the discretion of the guide, based on the behaviour of both the child and animals. In the case of boating activities, the availability of boats may restrict private use and require forward planning.

** Whilst there are age restrictions for children permitted on game viewing activities, all ages will be accommodated on game drive and boat transfers to-and-from the camp.

WILDCHILD AT OUR CAMPS

Children visiting the lodge can take advantage of the funfilled and interactive WILDchild programme where they can participate in the following:

- Baking in the kitchen with lodge chefs
- Learning to identify tracks with their ranger
- Bug finding missions
- Fishing
- Lily-necklace making
- Educational star gazing excursions

FAMILY ACCOMODATION

Sandibe Okavango Safari Lodge

- Children welcome
- WILDchild programme
- 1 family suite (2 suites linked by an enclosed walkway)
- Max 2 adults + 2 children (3 children on special request)
- One triple suite available

Nxabega Okavango Tented Camp

- Children welcome
- WILDchild programme
- 1 family tent (2 tents linked by an enclosed walkway)
- Max 2 adults + 2 children (3 children on special request)
- One triple tent available

Xaranna Okavango Delta Camp

- Children welcome
- WILDchild programme
- One triple tent available (children 12 years and younger)

Please note: due to the lodge not being fenced off, children are required to have an adult accompanying them at all times.





8 BEYOND SANDIBE OKAVANGO SAFARI LODGE

Sandibe suites

DISCOVER THE OKAVANGO DELTA
&Beyond Sandibe Okavango Safari Lodge accommodation

Your secluded nest

The intimate guest suites peep out from beneath the forest canopy, yet raised above the papyrus like the nests of golden weaver birds and offer horizon to horizon Delta views.



LOUNGE IN LUXURY



PRIVATE DINING



CHIC AND SOPHISTICATED

DISCOVER THE OKAVANGO DELTA
& Beyond Sandibe Okavango Safari Lodge accommodation

SUITES

12 suites / Maximum 24 guests

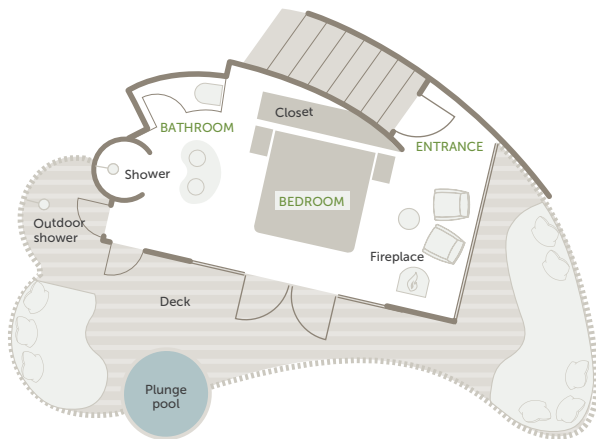


UNINTERRUPTED VIEWS

Each suite looks over the Santantadibe Channel and golden reed beds. Large wooden and mesh sliding doors open onto a private multi-level deck, with a seating area, daybed, outdoor shower and rim-flow plunge pool. Enjoy a king size or twin beds, serving hatch, well-stocked personal bar, walk-in wardrobe, open-plan lounge area and ensuite bathroom.

ROOM FACILITIES

Room sizes (Square meters)	100
Private veranda	Yes, with secluded seating area
Private plunge pool	No
Personal bar	Yes
Personal coffee station	No
Air conditioning / heating	Yes
Overhead fans	Yes
Mosquito nets	Yes
Bath	No
Shower	Indoor and outdoor shower
Seperate W.C	Yes
Telephone	Yes
Hairdryer	Yes
Internet access	Yes
In-room safe	Yes
Plug type	220V AC Plug Type C, D, M, N Adapters available
Triple bed option	1 (children 16 years and younger only)
Twin bed option	Yes (however, beds are within the same bedframe)
Double bed option	Yes
Accessibility	Not suitable for those with mobility issues



Typical suite layout

DISCOVER THE OKAVANGO DELTA
& Beyond Sandibe Okavango Safari Lodge accommodation

FAMILY SUITE

2 interconnected suites / Maximum 2 guests per suite

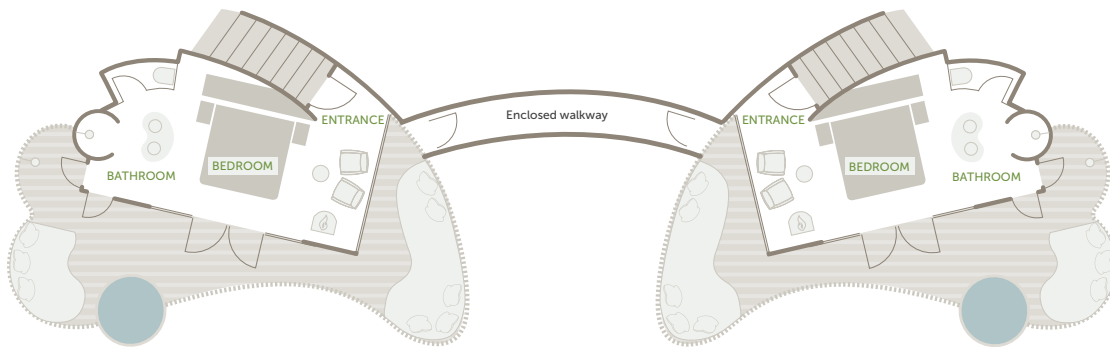


PERFECT FOR FAMILIES

The spacious family suite comprises of two suites with a covered interleading walkway. Enjoy a king size or twin beds, ensuite bathroom, serving hatch, personal bar, walk-in wardrobe and open-plan lounge area. Large wooden sliding doors open onto a private multi-level deck, with a seating area, daybed, outdoor shower and rim-flow plunge pool.

ROOM FACILITIES

Room sizes (Square meters)	100 each
Room configuration	2 suites linked by an enclosed walkway
Private veranda	Yes, with secluded seating area
Private plunge pool	No
Personal bar	Yes
Personal coffee station	No
Air conditioning / heating	Yes
Overhead fans	Yes
Mosquito nets	Yes
Bath	No
Shower	Indoor and outdoor shower
Seperate W.C	Yes
Telephone	Yes
Hairdryer	Yes
Internet access	Yes
In-room safe	Yes
Plug type	220V AC Plug Type C, D, M, N Adapters available
Triple bed option	On special request (children 16 years and younger only)
Twin bed option	Yes (however, beds are within the same bedframe)
Double bed option	Yes
Interleading door	Yes
Accessibility	Not suitable for those with mobility issues



Family suite layout