

DISCOVER THE OKAVANGO DELTA

# & Beyond Nxabega Okavango Tented Camp

Enjoy an unforgettable safari, discovering iconic wildlife wonders in a diverse land-water Okavango location.

DISCOVER THE OKAVANGO DELTA  
&Beyond Nxabega Okavango Tented Camp

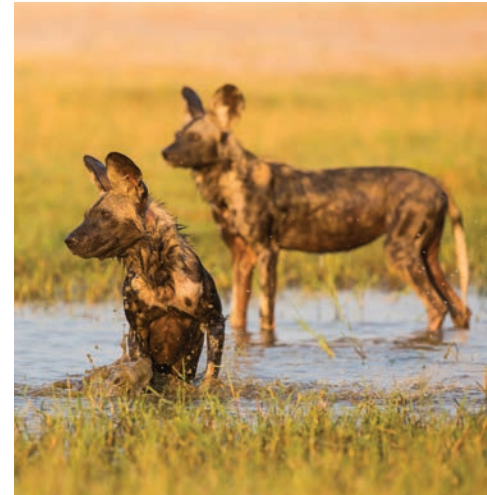
# Why stay?

**1 EXCEPTIONAL GAME VIEWING**  
Ideally positioned to explore the magnificence of the Okavango Delta, the lodge is located on an exclusive 25,000-hectare (61,775-acre) Big Five wildlife concession, bordering the Moremi Game Reserve.

**2 A WATER WONDERLAND**  
Seasonal mokoro adventures, motorised boat cruises and catch-and-release fishing experiences provide a unique opportunity to explore the maze of clear channels and opaque lagoons abundant with wildlife and brilliant birdlife.

**3 INSPIRED LOCAL HOSPITALITY**  
Our welcoming staff will be on standby to take care of your every need and ensure you leave with memories to last a lifetime. You will arrive as friends and leave as family.

**4 A BIRDER'S PARADISE**  
A diverse habitat with over 450 species recorded in the area. This is one of the best places to spot the elusive Pel's fishing owl.



As always we had a great time with &Beyond, the people, food and accommodation were of high standard. You always know that an &Beyond experience is exceptional. ”

DISCOVER THE OKAVANGO DELTA  
& Beyond Nxabega Okavango Tented Camp

# Lodge amenities



1

## INTERACTIVE FOOD & COFFEE BAR

Weaving together sweet treats and the delicious aroma of coffee, blend up a healthy juice, enjoy a warm waffle with any topping to suit and ask our expertly trained baristas for your java of choice.



2

## MASSAGE SALA

Indulge in one of our many relaxing wellness treatments in the intimate massage sala for a truly authentic African experience that rejuvenates the mind, body and soul.



3

## SAFARI SHOP

Within the camp's beautiful Safari Shop, expect to find a range of quality, handpicked handicrafts and fashion wear that showcase the very best of vibrant Botswana. These unique items provide the perfect memento of your stay in Africa.



4

## CAMP POOL

The camp's extensive pool area offers salas for shade, and comfortable loungers positioned to make the most of the beautiful Delta views and a glorious refresh after a captivating game drive.



5

## TESLA SOLAR POWER PLANT

The camp's extensive pool area offers salas for shade, and comfortable loungers positioned to make the most of the beautiful Delta views and a glorious refresh after a captivating game drive.

DISCOVER THE OKAVANGO DELTA  
& Beyond Nxabega Okavango Tented Camp

# Lodge amenities



## 6

### BOMA

A spectacular open-air boma encircled by a rugged wooden fence is set under the camp's massive ebony trees – ideal for buffet feasts under the stars.



## 7

### BUSH BANQUETS

Dine in the wild and relish a delectable meal in the middle of the bush, while out exploring the concession with your guide and tracker.



## 8

### PRIVATE SALA

Each tented suite has an extended private veranda complete with a shaded irresistible hanging daybed - the perfect place to relax between game drives.



## 9

### PERSONAL BARS

Your suite boasts a private mini-bar including the complex and oak barrel aged Tokara Potstill brandy and craft Inverocche rum, served with refreshing sliced limes and Franklin & Sons cola nut, ginger beer and ginger ale sodas.

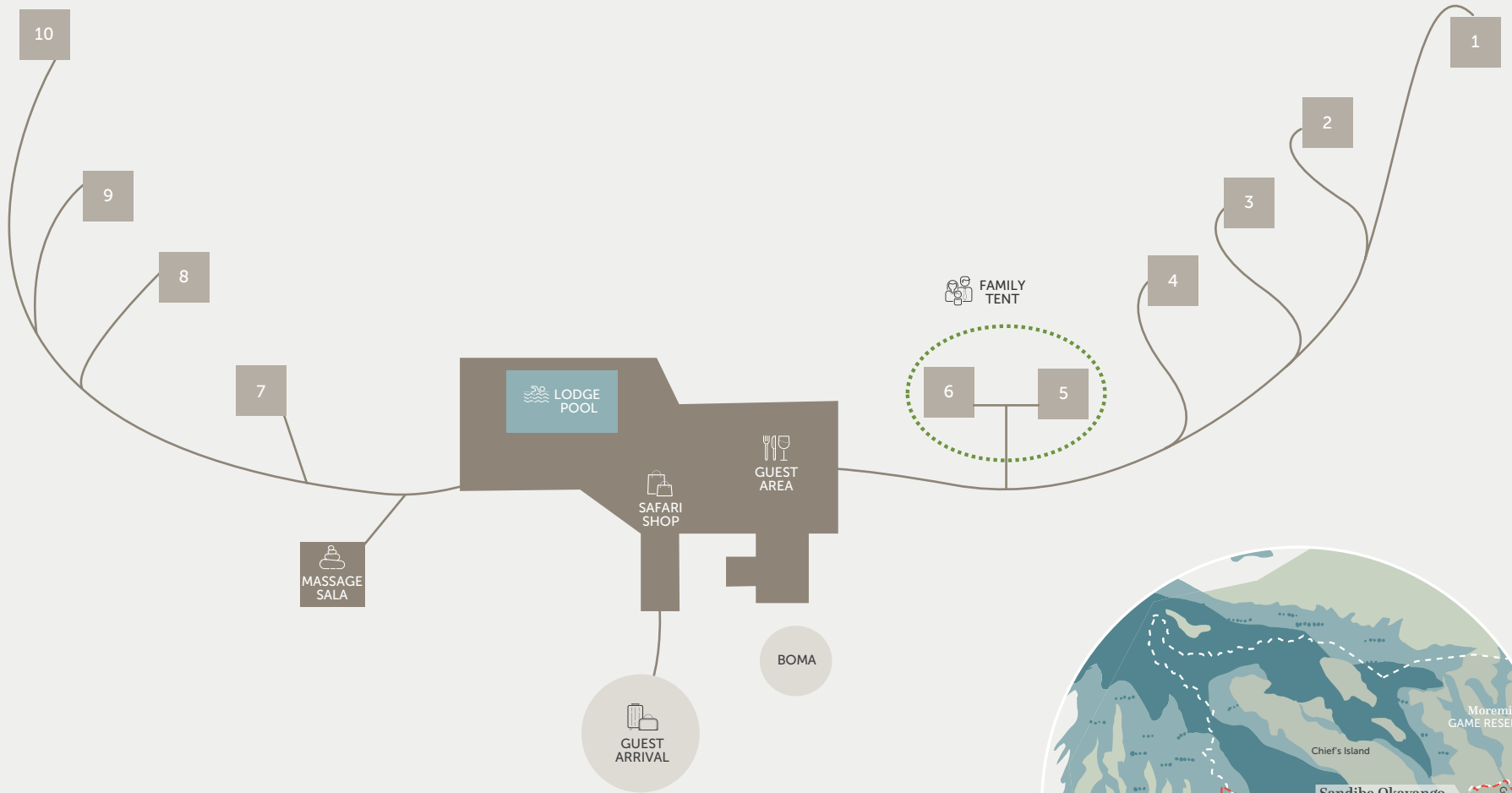


## 10

### SAFARI ACCESSORIES

Each tented suite comes with a complimentary pair of Swarovski Optik CL Companion 8x30 binoculars, for your use through the duration of your stay and a take-home Guides' Journal featuring wildlife illustrations and maps.

# DISCOVER THE OKAVANGO DELTA & Beyond Nxabega Okavango Tented Camp



## BEYOND Nxabega Okavango Tented Camp

— Road  
— Footpaths

DISCOVER THE OKAVANGO DELTA  
&Beyond Nxabega Okavango Tented Camp

# Lodge overview

## LODGE

Maximum number of guests	18
Number of rooms	9
Family accommodation	Children of all ages are welcome. 1 family suite (2 suites linked by an enclosed walkway)
WILDchild programme	Yes
Pilot / Guide accomodation	Yes
Room types	9 tented suites (including one family suite)
Distance between rooms	Approx. 20m (66ft)
Check in / Check out times	12 - 14h00 / 11h00
Lodge closure	Open year-round

## DINING

Food / Dietary options	Kosher food not available
Private butler service	Yes
Plated service	Yes
Private dining	Yes

## PAYMENT TYPES ACCEPTED

Credit cards accepted	Visa, MasterCard
Currency	All major currencies accepted

## FACILITIES

Power	220v AC
Internet access	Yes, Wi-Fi in tented suites only
Wine store or cellar	No
Boma	Yes
Bar	Yes
Interactive kitchen	Yes, including an interactive food & coffee bar
Swimming pool	Yes
Wellness offering	Healing Earth treatments offered in massage sala or in-room
Fitness	Gym-in-a-Bag available on request
Conference facilities	No
Weddings & blessings	No
Wheelchair access	No
Complimentary laundry service	Yes
&Beyond Safari Shop	Yes

## OTHER

Vehicle type	9 seater open safari vehicle (Max 6 guests per vehicle)
Private 4x4 safari vehicle	Yes, depending on availability and at additional cost

DISCOVER THE OKAVANGO DELTA  
& Beyond Nxabega Okavango Tented Camp

# Inclusions

## RATE INCLUDES

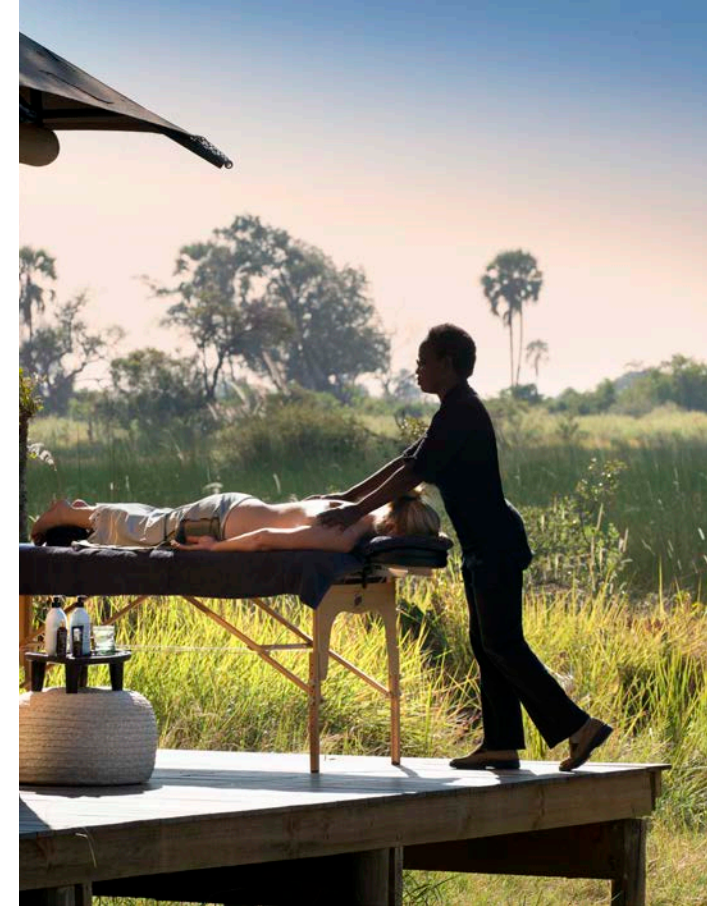
Accommodation	✓
Three meals daily	✓
Soft drinks, house wines, local brand spirits and beers, teas and coffees and refreshments on game drives	✓
Laundry	✓
Safari experiences (game drives, walking safaris, mokoro adventures*, motorised boat cruises*, catch-and-release fishing*, photography, stargazing and birding)	✓
Africa Foundation Community Visit	✓
Back-of-house Sustainability Tour	✓
A complimentary pair of Swarovski Optik CL Companion 8x30 binoculars per room	✓
Guides' Journal with illustrations of fauna and flora to record your sightings	✓
Concession map with Nxabega's illustrated Star Birds checklist	✓
Emergency medical evacuation insurance	✓
VAT	✓
Transfers to and from the lodge airstrip	✓
Park fees	✓

## RATE EXCLUDES

Administration fee	✗
Telephone calls	✗
Safari shop purchases	✗
Gratuities	✗
All items of a personal nature	✗
Champagne, cognacs, fine wines, premium brand spirits and cigars	✗
Private vehicle (Available at an additional cost)	✗
Scenic Helicopter Flights	✗

\* This activity is seasonal as water levels change yearly and weather patterns are unpredictable.

**NOTE: Unmanned Aerial Vehicles:** Please be advised that the use of unmanned aerial vehicles (drones) are prohibited in the conservation areas we manage, until such time as their impact on wildlife and anti-poaching initiatives can be assessed. This rule will apply throughout Africa, as our partners in various countries and regions have adopted a similar stance.



A scenic view of a lagoon in the Okavango Delta. In the foreground, a motorboat with a light-colored canopy is on the water, carrying several people. The boat is moving towards the left. In the middle ground, two elephants are partially submerged in the water, facing left. The background is a dense line of green trees under a blue sky with scattered white clouds. The water is calm, reflecting the boat and the surrounding landscape.

DISCOVER THE OKAVANGO DELTA

# Adventures of a lifetime

Celebrated for its winding waterways, glassy lagoons and remote islands teeming with wildlife, its no surprise that nature lovers flock to the Delta.



## DISCOVER THE OKAVANGO DELTA

Adventures of a lifetime

# Land and sky experiences

A Botswana safari is an experience of a lifetime, and there is so much on offer in the Delta – from twice-daily game drives and walks to the spectacular star-studded night skies.



# 1

### SAFARI GAME DRIVES

Enjoy twice-daily game drives that set off early in the morning or late in the afternoon (continuing after nightfall), in the company of local career guides and trackers who will do their best to ensure that all your wishes are met. You will be encouraged to not only go in search of the Big Five but to also appreciate the wonderful array of flora and fauna dotted across the Okavango Delta.



# 2

### WALKING SAFARIS

If you're looking for a thrilling view-from-the-ground, this is your chance to discover a multitude of natural wonders in the company of your experienced safari guide. Tread in the tracks of the Delta wildlife, breathe in the scent of crushed wild grasses, and feel your senses come alive.



# 3

### FAMILY SAFARIS

BEYOND offers a host of entertaining activities for children aged 6–12 years, bringing alive the magic of Botswana. Whilst on a family safari, you can rest assured that your children will always be safe and well cared for (both during activities and at the lodge). Every minute is supervised by our guides and lodge staff, who provide hours of amusement and invaluable information to the children in their care.



# 4

### PRIVATE SAFARIS

Tailored especially for you, this exclusive safari allows you to explore the Delta with your very own dedicated guide, tracker and vehicle. Game drives can be as long or as short as you wish, covering your personal interests, from the insect kingdom to great herds of buffalo or prides of lion. Meals can be savoured at the camp, or alternatively, enjoyed away from the lodge.

DISCOVER THE OKAVANGO DELTA  
Adventures of a lifetime

---

# Land and sky experiences



## 5

### PHOTOGRAPHY

Our expert guides will use their extensive experience in wildlife behaviour to try get you into the best positions to get the shot of a lifetime. At 8Beyond Sandibe Okavango Safari Lodge, our customisable vehicles come with charging points for cameras equipment and camera bean bags on clamps providing excellent support for any camera and lens combination.

---



## 6

### SCENIC HELICOPTER FLIGHTS

Take to the skies for a birds-eye view over the Okavango Delta's signature of blue waters against the green and brown tapestry of papyrus fringed islands and open floodplains. From these heights, even those far-flung and inaccessible corners of the Delta can be seen, fully showcasing the incredible diversity of landscapes and wildlife.

---



## 7

### STARGAZING

Gaze at the Southern Hemisphere's night skies in complete awe. With little to no light pollution in the area, you will be amazed by what is above. Take a closer look at the planets and constellations with your ranger while out on a drive or sit out on your private deck at night and see if you are able to spot a lucky shooting star.

---



## 8

### BIRDING

Botswana is a top Africa birding destination, with the waters in the Okavango offering great year-round diversity. Guests flock to the area in search of several specials such as the Pel's fishing owl, African pygmy goose, lesser jacana, slaty egret to mention just a few. Our knowledgeable guides enjoy the challenge of finding your favourites.

---

## DISCOVER THE OKAVANGO DELTA

Adventures of a lifetime

---

# Seasonal water experiences

Within the Delta, water levels change yearly. Enjoy these seasonal experiences only available at Nxabega Okavango Tented Camp and Xaranna Okavango Delta Camp.



# 1

## MOKORO ADVENTURES

Pastel-coloured lilies float upon verdant lily pads, butterflies captivate with their iridescent wings and tiny painted frogs cling to the reeds as you take to the tranquil waterways in a traditional mokoro (dugout canoe). Keep a careful look out for the variety of fish darting through the crystal-clear water below you.

---

# 2

## CATCH-AND-RELEASE FISHING

The best catch-and-release fishing excursions take place from ♾️Beyond Nxabega Okavango Tented Camp due to its proximity to the Panhandle region. Here, the Okavango River feeds into the labyrinth of channels and lagoons that make up the heart of the Delta wetland. Try your hand at catching a variety of fish, including the predatory tiger fish.

---

# 3

## MOTORISED BOAT CRUISES

Explore the Okavango Delta's intricate network of winding channels and opaque lagoons onboard a sleek, motorised boat that covers great distances, showcasing magnificent views of the watery landscape. The unique perspective from the boat offers great sightings of pods of hippos, wildlife attracted to the water's edge and beautiful birdlife.

---

DISCOVER THE OKAVANGO DELTA

Adventures of a lifetime

---

# Impact experiences

Everything we do at &Beyond is centred around our core ethos of “Care of the Land, Care of the Wildlife and Care of the People” and we strive to provide a truly authentic experience.



## 1

### AFRICA FOUNDATION COMMUNITY VISIT

Enquire about this feel-good community excursion to the Sexaxa Village, outside Maun, on the day of your departure to see the work that &Beyond and Africa Foundation have completed at the Sexaxa School. It is with our guest's support that this inspiring project has flourished, and now young children no longer need to walk 5km (3mi) to get to and from school each day. Please note that this excursion depends on your departure time..

---



## 2

### BEHIND-THE-SCENES SUSTAINABILITY TOUR

We would love to show you our sustainability story. From installing the first solar power plant in the Okavango Delta at &Beyond Sandibe Okavango Safari Lodge in 2014 in 2015 to using a solar photovoltaic (PV) hybrid system at &Beyond Xaranna Okavango Delta Camp, the first of its kind in Botswana, with Tesla Powerpack Battery Energy Storage System 'green' technology. Audits, heating systems, water bottling plants, waste-water management – we have nothing to hide.

---



## 3

### LOCAL CRAFTS

Browse through our Safari Shop and expect to find a range of quality, handpicked handicrafts and fashion wear that showcase the very best of Botswana. Peruse the shop's range of excellent eco-souvenirs, where a portion of the proceeds raised benefits a local community or conservation initiative. Don't leave without stunning hand-woven baskets or intricate handcrafted Bushman décor.

---

DISCOVER THE OKAVANGO DELTA  
Adventures of a lifetime

# Seasonal highlights

## YEAR-ROUND ACTIVITIES

✓ Safari game drives	✓ Photography	✓ Wellness treatments**
✓ Walking safaris	✓ Scenic helicopter flights**	✓ Africa Foundation community visit
✓ Family safaris	✓ Stargazing	✓ Back-of-house Sustainability tour
✓ Private safaris**	✓ Birding	

## TIMING IS EVERYTHING

	JAN	FEB	MAR	APR	MAY	JUN	JUL	AUG	SEP	OCT	NOV	DEC
Mokoro adventures*	Nxa	Nxa	Nxa	Nxa	Nxa,Xar	Nxa,Xar	Nxa,Xar	Nxa,Xar	Nxa,Xar	Nxa,Xar	X	X
Motorised boat cruises*	Nxa	Nxa	Nxa	Nxa	Nxa,Xar	Nxa,Xar	Nxa,Xar	Nxa,Xar	Nxa,Xar	Nxa	Nxa	Nxa
Catch-and-release fishing*	X	X	X	Nxa	Nxa	Nxa,Xar	Nxa,Xar	Nxa,Xar	Nxa,Xar	Nxa	Nxa	Nxa

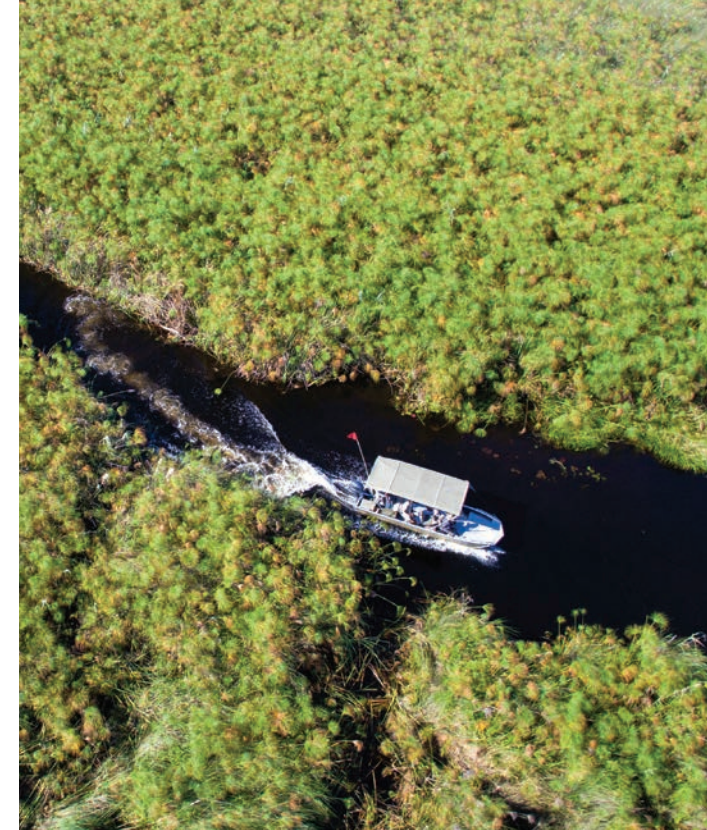
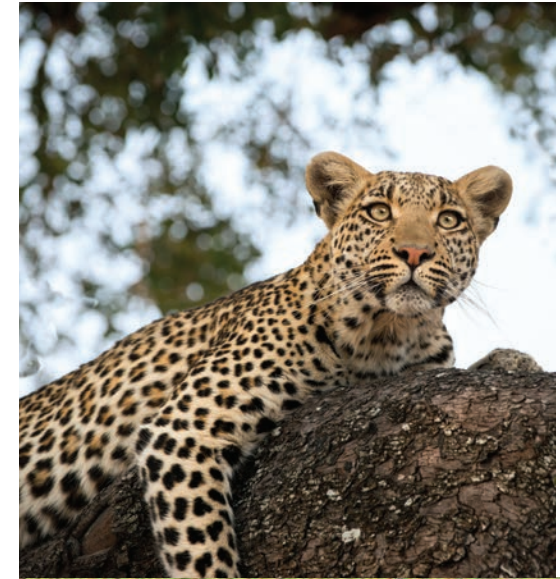
KEY | Nxa - &Beyond Nxabega Okavango Tented Camp; Xar - &Beyond Xaranna Okavango Delta Camp; X - Not available

\*This information is given on historical data and can only be used as a reference because water levels change annually. Weather patterns are unpredictable.

\*\* This activity is at an additional cost

**It is fair to say that we have been mind-blown by the overall experience. We loved it all and really felt like family.** ”

&BEYOND GUEST





& BEYOND NXABEGA OKAVANGO TENTED CAMP

# Nxabega tented suites

DISCOVER THE OKAVANGO DELTA  
& Beyond Nxabega Okavango Tented Camp accommodation

# Contemporary safari elegance

Blending harmoniously with the environment, nine tented suites (including a family option) are set on raised wooden platforms, cradled under a canopy of towering ebony trees.



INVITING TENTED SUITES



MODERN VANITIES FOR TWO

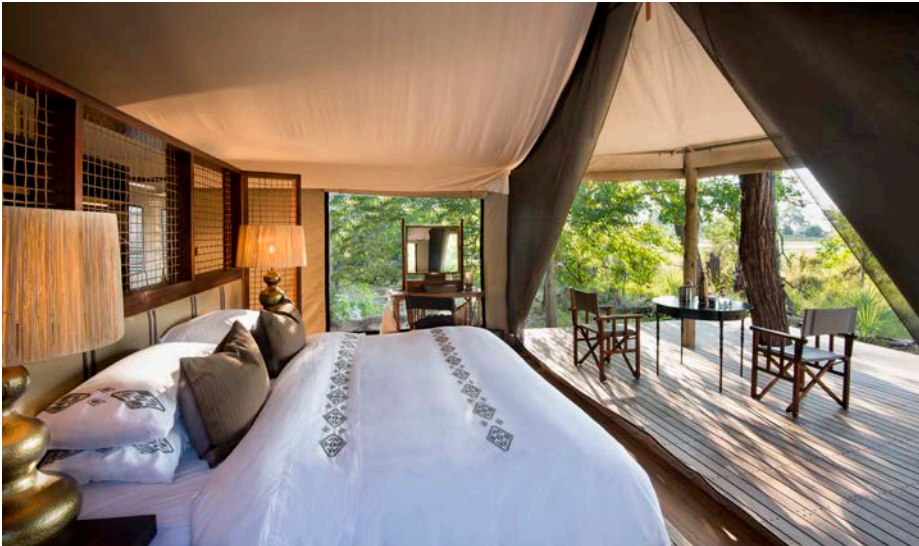


PRIVATE SALA

DISCOVER THE OKAVANGO DELTA  
&Beyond Nxabega Okavango Tented Camp accommodation

## TENTED SUITES

9 suites / Maximum 18 guests

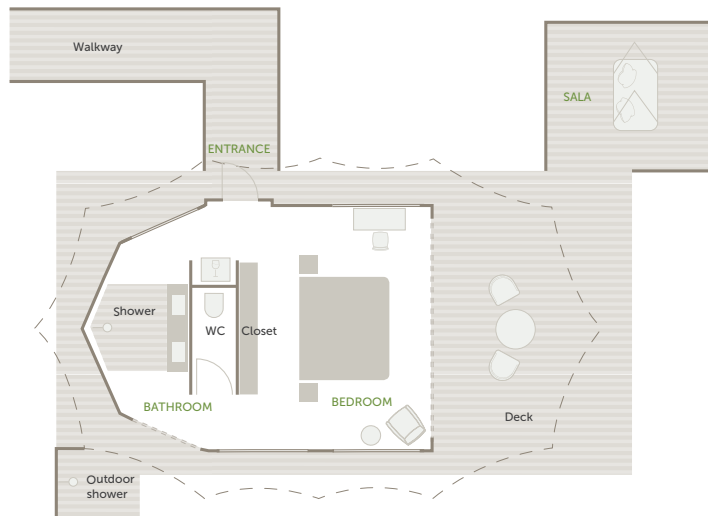


### RUSTIC ELEGANCE

Each spacious suite features a luxurious bed, an extended private veranda complete with a shaded sitting area, dreamy hanging daybed, and glorious Delta outlooks. The open-designed ensuite bathroom has both an indoor and screened outdoor rainshower, with a flush toilet enclosed by stylish canvas panels.

### ROOM FACILITIES

Room sizes (Square meters)	18
Private veranda	Yes, with private sala
Private plunge pool	No
Personal bar	Yes
Personal coffee station	No
Air conditioning / heating	No
Overhead fans	Yes
Mosquito nets	No (sealed room)
Bath	No
Shower	Indoor and outdoor shower
Separate W.C	Yes
Telephone	Yes
Hairdryer	Yes
Internet access	Yes
In-room safe	Yes
Plug type	220V AC Plug Type C, D, M, N Adapters available
Triple bed option	One (children 16 years and younger only)
Twin bed option	Yes (however, beds are within the same bedframe)
Double bed option	Yes
Accessibility	Not suitable for those with mobility issues



Typical tented suite layout



## DISCOVER THE OKAVANGO DELTA

&Beyond Nxabega Okavango Tented Camp accommodation

# FAMILY TENT

2 interconnected tents / Maximum 2 guests per suite

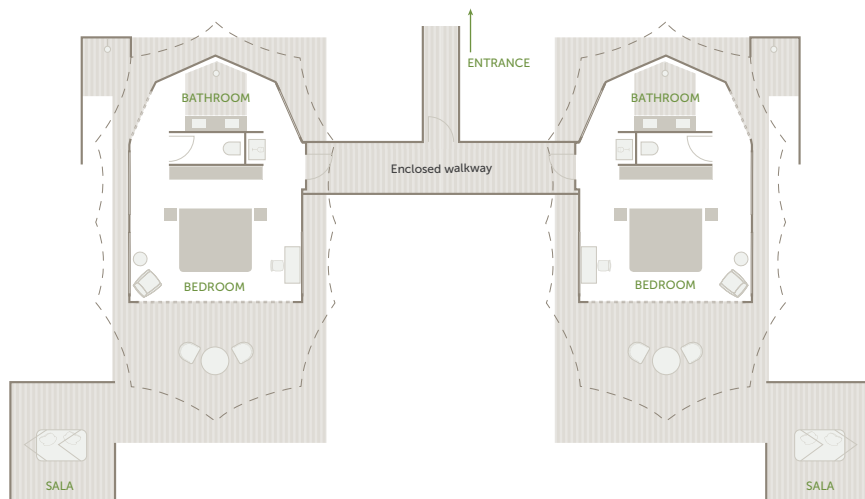


### PERFECT FOR FAMILIES

The interleading family suite offers the perfect setting for families to enjoy the wonders of the Delta. It consists of two luxury tents joined by an enclosed walkway and features a luxurious bed, ensuite bathroom with an indoor and al fresco shower. A sprawling veranda, with a spacious sitting area and a private sala provide spectacular views.

### ROOM FACILITIES

Room sizes (Square meters)	18 each
Room configuration	2 suites linked by an enclosed walkway
Private veranda	Yes, with private sala
Private plunge pool	No
Personal bar	Yes
Personal coffee station	No
Air conditioning / heating	No
Overhead fans	Yes
Mosquito nets	No (sealed room)
Bath	No
Shower	Indoor and outdoor shower
Seperate W.C	Yes
Telephone	Yes
Hairdryer	Yes
Internet access	Yes
In-room safe	Yes
Plug type	220V AC Plug Type C, D, M, N Adapters available
Triple bed option	On special request (children 12 years and younger only)
Twin bed option	Yes (however, beds are within the same bedframe)
Double bed option	Yes
Interleading door	Yes
Accessibility	Not suitable for those with mobility issues



Family tent layout



andBEYOND



@andbeyondtravel  
#seewhatliesbeyond

andBeyond.com

**GENERAL ENQUIRIES**  
+27 11 809 4300  
[contactus@andBeyond.com](mailto:contactus@andBeyond.com)

**REGIONAL ENQUIRIES**  
[africa.reservations@andBeyond.com](mailto:africa.reservations@andBeyond.com)  
[southasia.reservations@andBeyond.com](mailto:southasia.reservations@andBeyond.com)  
[southamerica.reservations@andBeyond.com](mailto:southamerica.reservations@andBeyond.com)

**PRESS ENQUIRIES**  
[media@andBeyond.com](mailto:media@andBeyond.com)

**TRAVEL TRADE**  
[enquiry@andBeyond.com](mailto:enquiry@andBeyond.com)