



MAFIA

Island Diving

About Our Diving



The Mafia archipelago offers a wide variety of dive opportunities to suit all tastes. You can be as adventurous or as laidback as you like.

The first rule of Mafia is that everything is governed by the sun and the moon. Their gravitational pull create's differences in the height of the ocean at varying times of the day, known to us, as tides. The tides depict when we will go diving but also depict the types of diving available.

The majority of Mafia's dive sites are found not deeper than 18 metres, making them the perfect reefs for all ages and experience levels to explore. Mafia Island Diving is the only PADI 5 star dive centre on the island, offering a top notch and friendly service with an accent on safety and attention to detail.

All of our dives are run off traditional dhows in an effort to blend in as much as possible with the unaltered, seafarers of Mafia. This signature boat of the archipelago has been uniquely transformed to offer you the highest level of safety and comfort possible while still experiencing a true Swahili island adventure.

We offer personalised diving in the sense that our dive groups are never larger than 4 divers to 1 guide. We always try to group divers by experience levels and interests to ensure that everyone is content. We are able to teach and communicate in several languages; English, German, Spanish, Italian, French, Portuguese, Dutch and Swahili.

Mafia Island Diving strictly follow the highest safety protocols in the industry, we do not do decompression dives and limit divers to the maximum depths stipulated by their certification. We do not do this to step on anyones toes, only to ensure that everyone is well protected, our number one priority is safety and ensure every aspect of our operation reflects this.



MAFIA

Island Diving

Diving within Chole Bay



Scuba diving within Chole bay is a fantastic, colourfully exuberant experience accompanied by hoards of fish, all with different shapes, colours and sizes. The waters surrounding Mafia Island offer an extraordinary variety of marine diversity, with over 400 species of fish, 5 species of marine turtle and 48 species of coral. The majority of these being sighted within 30 minutes boat ride of the centre.

Every day we schedule a boat trip out to Chole bay for two dives on two different reefs to gather a taste of the beautiful underwater world. The duration of the trip is roughly around four and a half hours. Depending on the wind, we usually hoist the sail and either glide gently out to or back from the dive sites, adding an extra layer of relaxation to the days adventure.

All the dive sites within the bay, except for one, are suitable for all levels of divers and offer a relaxing environment for one to either start their diving journey or simply bask in the underwater beauty. All of our dives are planned as a gentle drift, with the boat collecting us from wherever we leisurely surface. We spend our surface on board our dhows, enjoying a cup of tea or coffee and some small snacks before slipping back into the ocean for another round of underwater fun.

When the tides comply it is also possible to venture slowly out into the bay for a night dive on one of our beautiful reefs. Watching the sun slowly drift below the horizon, as we prepare to roll back into the darkening, liquid abyss, is an experience not to miss!





MAFIA

Island Diving

Diving outside Chole Bay



Outside the safe confines of Chole bay, Mafia offers a small variety of deeper dive sites for those experienced divers looking for something a little more challenging.

These sites are available to Advanced divers from October through to March when the trade winds blow from the North and the open ocean is relatively calm, creating perfect conditions above and below the water.

These dive trips are both dependent on the tides and weather conditions and are always organised as a double tank trip. After the first dive we slowly motor into a sheltered area on the edge of the bay to enjoy a cup of tea or coffee and chat about our dive before excitedly jumping in for the next one.

Although the dive sites outside the bay are few, each one is special, and could be dived hundreds of times, experiencing something different during each moment underwater.

Of the four sites available, two are wall dives and two are sloping reefs. Although the diversity and coral cover is less than what is found inside the bay, the number and sheer size of the fish are larger and encounters with giant reef rays and big groupers are common.





MAFIA

Island Diving

Diving from the Shore



Just a stone's throw away from the dive centre, we have the opportunity to explore a macro paradise! Mafia Island Diving's owners, David and Danielle, being macro maniacs, spent a great deal of time exploring every inch of the sea shore in search of the weird and the wonderful.

What they found were a variety of topographies and flora, home to a range of critters from cuttlefish to seahorses, you name it, they've probably seen it! With over 100 different nudibranch species so far identified and a variety of crabs, shrimps and strange fish - these dive sites are unusual and special and definitely worth a wander.

Due to the tides, we are only able to organise one dive a day from the shore. When the low tide falls in the evening hours, the shore dive is an excellent place to head out for a night dive and is perhaps our favourite dive available in Mafia!

Mafia Island Diving is the only centre on Mafia which dive these sites, and take great pride in taking fellow macro enthusiasts out! Our dive guides have developed a passion for the little things in life as well and have spent their time exploring the different sites, looking under every rock and leaf to ensure they can spot all the rare creatures that are sought after!

Due to the dive sites being so shallow they are excellent places for beginners, wary divers and experienced divers alike.





MAFIA

Island Diving

Diving from Sandbanks



When the tides and weather partner up to create a perfect day, we have the opportunity to explore the South of the archipelago.

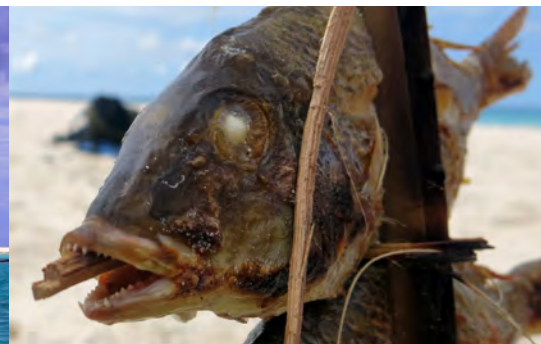
Two hours sail South of Mafia Island, we have a selection of dive sites to enjoy. These diving trips are a full day adventure and a great way to get non diving family members involved.

We depart from the dive centre in the early morning aboard one of our dhows to start our journey South, weaving through coral reefs, and making our way around small islands to finally arrive in the Mafian channel, where miles and miles of turquoise water awaits us. The journey itself is a great way to see the lesser visited southern section of the archipelago and spot species such as dolphins.

The reefs that we shall explore are beautiful coral reef dives with patches of pure white sand. A kaleidoscope of fish dart in and out of their colourful homes and if we are lucky, white trip reef sharks will lazily, sway over the sand. Above the water, snorkellers can also explore the reefs and watch a multitude of marine life just metres away.

During the months of August and September we can combine this beautiful diving safari with a spot of whale watching which really adds to the experience!

After a beautiful morning of water exploring, we settle on to our tantalizing sandbank, have a BBQ picnic and relax, before slowly making our way home in the early afternoon.





MAFIA

Island Diving

Diving Ras Kisimani



as Kisimani is in our opinion, home to the most beautiful beach you can find on Mafia Island.

Just under two hours sail from the centre, the journey is riddled with hues of aquamarine and turquoise. Arriving on a stunning white beach which goes on for miles with not a single person in sight besides the odd fisherman returning from his morning out at sea.

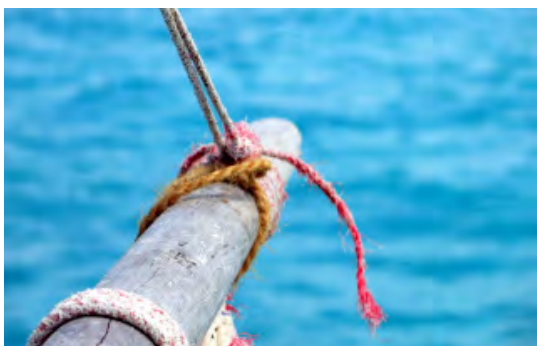
We set up a camp beneath a tree and in true Swahili style rustled up some fish to BBQ under the coconut trees. Snorkelling off the beach you can come across big crabs, fields of star fish and a moray eel or two.

One can walk down the beach where you can find the ancient ruins of Ras Kisimani where you can readily dig up pottery shards, old coins and beads.

After a scrumptious picnic by the sea, we board our dhow and head off for some underwater exploring! There is a beautiful reef that runs directly along the shore, housing beautiful hard coral structures and a plethora of fish! One can snorkel or dive here making at an excellent adventure for the whole family.

The cherry on the cake is the journey back, hugging the Mafian coastline and gazing in awe at the miles after miles of untouched beach, mangrove forests and towering palm trees.

A wonderful escape for the day suitable for couples, families and friends. This excursion is only possible on high tide, an excellent alternative to Mange sandbank.





MAFIA

Island Diving

Nudi City



Location: Shore



Max Depth: 10 metres



Certification: All levels

Nudi City was our first discoveries from the shore and named for its inundation of several different types of nudibranch. The Reef is a 300 metre swim off Utende beach and lies at around 9 metres deep. Here there is an abundance of soft corals and fantastic anemones.

We regularly spot helmet gurnards and spiny devil fish on this site as well as dwarf scorpion fish and lion fish. The reef offers us a fantastic amount of macro life in the form of flatworms, shrimps, flounders, dragon sea moth fish, sea hares and snake eels. You can also expect to see some of the usual suspects; blue spotted rays, octopus and cuttlefish.

When the low tide falls in the early hours of the evening, nudi city can be dived during the night, when it transforms into a sanctuary for the weird and the wonderful.





MAFIA

Island Diving

Tom's Garden



Location: Shore



Max Depth: 7 metres



Certification: All levels

Our most recent shore dive discovery is this gem of a dive. A must do for macro enthusiasts, this site has a depth of 7 metres but can be extended if one wants to rear off the beaten track into the sand dunes.

This dive site was named after one of our Instructor's who stumbled upon this seahorse haven by chance. Amongst the thriving sea grass and sandy patches we can find several species of seahorses, of varying sizes and colours. Also a common sight here are our friends the frogfish as well as shrimp fish, nudibranches, pipefish, pipehorses.

Quite often one can also be accompanied by goat fish and trevallies as they scour the sandy bottom for food. This is also an excellent dive to spot the crocodile fish lurking around in the weeds.





MAFIA

Island Diving

Frogfish Town



Location: Shore



Max Depth: 12 metres



Certification: All levels

Frogfish town was another Mafia Island Diving discovered site just 400 metres off Utende beach. The reef itself starts at around 9 metres deep and is algae and soft coral dominated with a large number of different colour anemones and sponges.

Here, amongst the splashes of sponges one can spot the illusive frogfish as well as harlequin shrimps and various other critters. The site can be explored further East where it develops into a more varied topography with small caverns and very small rock pinnacles. Here one can see an excellent variety of Nudibranches, shrimps as well as small and medium sized fish.

When the low tide falls in the early hours of the evening, this is one of our favourite sites to explore under a starry night sky. The soft coral reef comes alive with critters of all shapes and sizes.





MAFIA

Island Diving

Critters Cove



Location: Shore



Max Depth: 10 metres

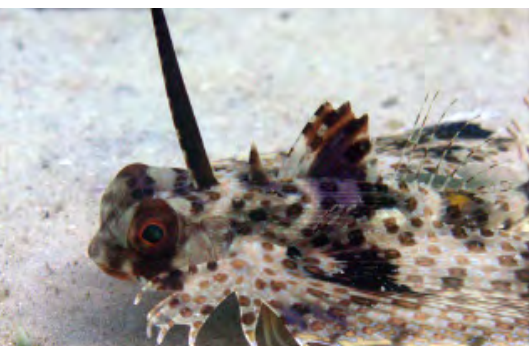


Certification: All levels

One of our favourite dives to go hunting for the super macro. Critters cove can be found just off the shore, at the edge of the drop off. A sandy bottom dive, where one explores the patches of weed, small bommies and pipe that has been layed between Chole and Mafia Islands.

Regular sightings include shrimps, nudibranches, sap sucking slugs, seahorses, spiny devil fish, dwarf lionfish, snake eels and morays. Quite often we are also lucky enough to spot the cockatoo wasp fish, helmet gurnard and ghost pipe fish.

This site is definitely for muck divers as the entirety of the dive is spent combing through the underwater habitat with our noses to the ground. A nice addition to this dive is getting caught up in a 200 to 300 strong school of Jacks which regularly patrol the shore.



MAFIA

Island Diving

Milimani South



Location: Chole Bay



Max Depth: 18 metres



Certification: All levels

Milima in Swahili means mountains or hills. Milimani means 'the place of mountains' which very aptly describes this dive site with its towering hard coral formations.

Milimani South is extremely picturesque with huge coral formations through which the diver navigates. Spectacular layered coral peaks which invite divers to swim amongst and behind them to explore the shallower jewels of the site to then re-emerge out of the coral mountains back to the deep.

This is followed by vast porites formations that are dome-like with many lion fish, glass fish and moray eels.

From here it slopes away to 18 metres with a wide variety of soft and hard corals. Here we expect to see our resident napoleon wrasse swimming by as well as big schools of big eyes, snappers and fusiliers. Milimani is always beautiful and never ceases to amaze with its unusual yet perfected formations.



MAFIA

Island Diving

Milimani North



Location: Chole Bay



Max Depth: 18 metres

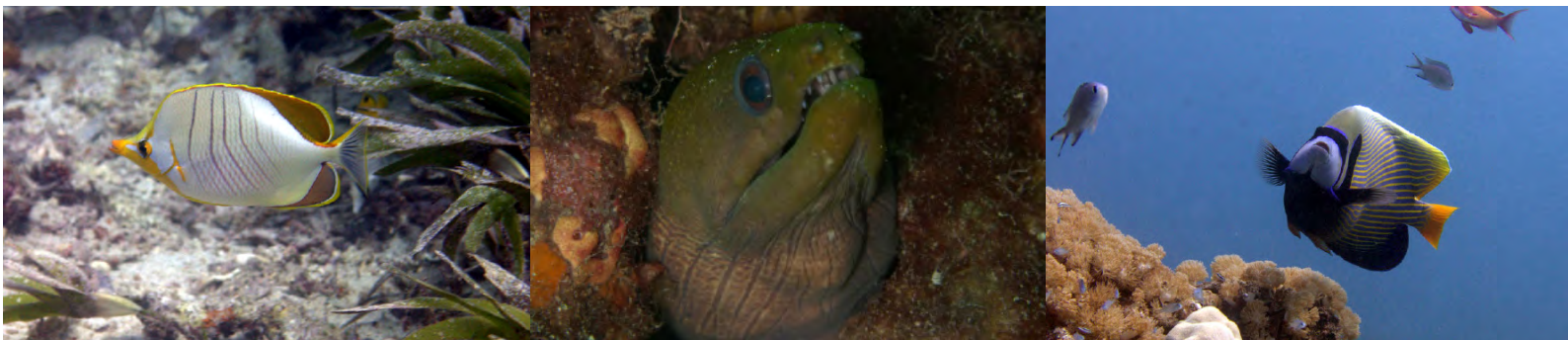


Certification: All levels

This dive site is the opposite end of the previous and offers a different view of the very long reef system. Here the beginning of the site starts with some beautiful bommies randomly placed across the white, sandy bottom. One can spot plenty of wonderful nudibranches as well as octopus, shrimps and the illusive frog fish if you look hard enough!

The reef itself starts with plenty of hard corals around 5 metres and slowly continues to around 17. This side of the reef is riddled with lobsters and it is quite common to spot leaf fish and scorpion fish. This dive is very easy, relaxing and has a lot to offer to those exploring it!

Towards the middle of the dive, at around 17 metres, we have discovered a cleaning station with big morays, giant reef rays, shrimps and crabs. A busy hub of sea creatures which you could admire all day!



MAFIA

Island Diving

Kinasi Wall



Location: Chole Bay



Max Depth: 18 metres



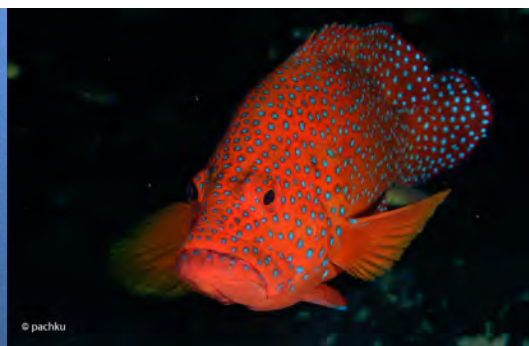
Certification: All levels

This is a sheltered bank reef, moderately deep and steeply sloping but not a sheer wall as its name would suggest.

One can find beautiful coral formations on the top of the reef at just 5 metres and can find a maximum depth of 21 metres when gliding just above the rubble bottom. The reef itself runs south-east:north-west for approximately 800 metres. This complex coral reef supports a great variety of schooling and solitary fish such as snappers, surgeon fish, wahoo and barracuda.

Giant clams, sea fans, large marble groupers and napoleon wrasse are common. Hawksbill turtles regularly make an appearance and quite often giant and potato groupers can be seen patrolling the reef. Regular sightings include the usual mix of reef fish and a healthy number of marble groupers!

This is a relaxing and beautiful dive but can experience a strong current when dived during the spring tide.





MAFIA

Island Diving

Coral Islands



Location: Chole Bay



Max Depth: 18 metres



Certification: All levels

This site comprises of three extensive and spectacular coral patches starting at around 9 metres down and leveling off at around 17. These gorgeous, coral islands are separated by sand channels that reflect ambient light from the surface in all direction, lighting up the reef.

The many species of coral are packed around the ancient Porites formations, portraying not only Mafia's perfect beauty but also its natural history. There are a large number of dense shoals of fish, a peculiarity is the occurrence of large numbers of spotted garden eels, so named for their habit of living together in "gardens" in the sand around the coral. Here one can also find a vast variety of macro creatures such as nudibranches and crabs.

Other critters include leaf fish, lion fish, scorpion fish and all the usual suspects from morays of varying sizes to marble groupers darting in and out of the coral fields.





MAFIA

Island Diving

Chole Reef



Location: Chole Bay



Max Depth: 18 metres



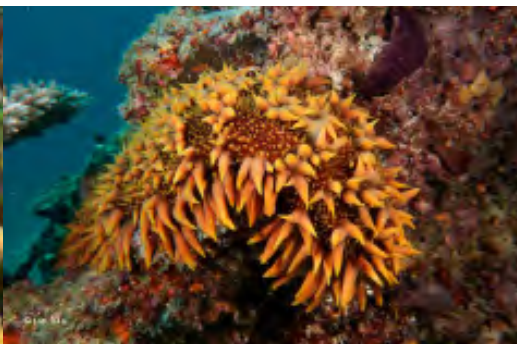
Certification: All levels

Chole Reef is a bank reef that is found lying north-east:south-west and is around 800 metres long.

The reef starts at around 5 metres and descends to 17 ending with sand and coral rubble where it is common to see scavenging titan trigger fish and scrounging goat fish. We regularly see giant reef rays just a couple of metres off the reef resting on the rubble, taking a break before elegantly lifting off and rippling away into the blue.

Chole reef is a startlingly rich tapestry of corals enveloped in clouds of colourful fish; damselfish, fusiliers, butterfly, angel and parrot fish. Turtles are common in the shallows and there are a staggering number of lobsters, nudis and giant sea cucumbers to be found.

This reef is exceptionally long and varied, making it the perfect place to split into two and dive it from opposite ends.





MAFIA

Island Diving

Pyramid



Location: Chole Bay



Max Depth: 14 metres



Certification: All levels

Pyramid is a Mafia Island Diving discovered site with a maximum depth of just 14 metres. This site offers an array of pretty scenery, beautiful fish and coral formations.

The dive starts around some coral bommies and small rock formations and slowly ascends to a shallow bank reef after passing the distinct coral formation of a pyramid. Here one can see a resident honeycomb moray eel as well as a resident juvenile ribbon eel. There are small schools of reef fish and from time to time larger passing individuals.

This site offers spectacular views as the light ricochets off the sandy bottom, lighting up the sponges and corals, exentuating their colours. The pyramid is a small cleaning station, one where you can spend a great deal of time watching the reef creatures stop by for a clean before darting of back to daily life. There are plenty of macro critters to be found here in the form of nudis, shrimps and crabs.





MAFIA

Island Diving

Msumbiji



Location: Chole Bay



Max Depth: 17 metres



Certification: All levels

Msumbiji in Swahili means Mozambique, why it was named this, nobody can really say. This site consists of several rock formations decorated with soft corals, algae, sponges and anemones. The slopes and sheer walls start at around 3 metres and fall to a maximum of 17.

Away from the central formation are spires of coral that provide archways and overhangs for us to explore – a divers playground. One can see beautiful sting rays, reef fish, shrimps and crabs. It is famed for its huge variety and abundance of nudibranches and resident ribbon eel.

This is an excellent site for a night dive as the rock faces come alive at night with plenty of creatures!

This dive site offers immense scenery with fantastic topography as well as interesting and colourful marine life. It is an amazing spot for photography opportunities.





MAFIA

Island Diving

Kinasi Pass



Location: Chole Bay



Max Depth: 26 metres

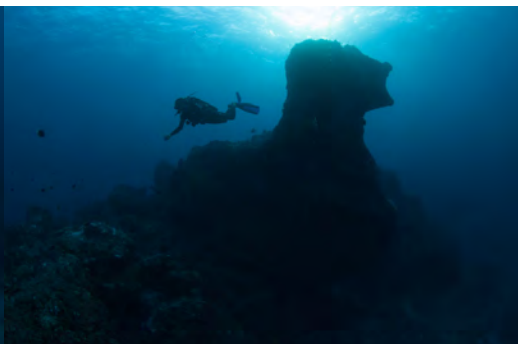
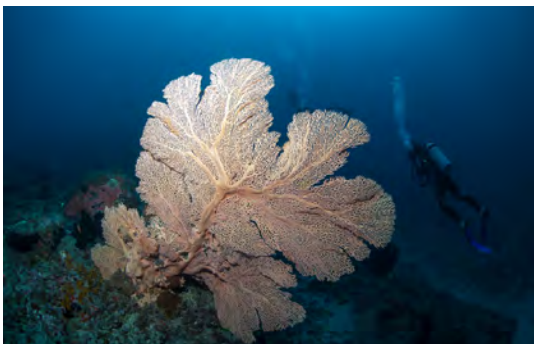


Certification: Advanced

Perhaps the most famous of all the dive sites in Chole Bay is the mighty Kinasi Pass and its 'chicken' pinnacle. The pinnacle is a 12 metre spire of ancient coral rock lying in the inner pass, with a maximum depth of 24 metres at the base - all agree its resemblance to a chicken is uncanny.

This is a spectacular dive for the unusual structure and the mixture of reef and pelagic fish. Home to two very large potato groupers who have purposefully been left in the waters by local fisherman due to their sheer size.

The pass is effectively a corridor, feeding water from the open ocean into the bay. We start at the top of this corridor and drift along, first, to greet the chicken and then to explore a mini wall some caverns. The pass plays host to great shoals of reef fish, barracuda and the occasional turtle and cobias. There are a decent number of dancing, giant reef rays below and pelagics coming and going with the tide.



MAFIA

Island Diving

Small Rock



Location: Chole Bay



Max Depth: 16 metres



Certification: All levels

This site was primarily used for snorkelling until we heard tales of aquamarine waters, bright coloured corals and dramatic rocky pinnacles. We decided to explore the area on scuba and haven't looked back.

This site has a maximum depth of 16 metres and a minimum of around 3. It is the best area to spot many, big, napoleon wrasses, who like to circle the pinnacle. In addition to the varied topography, small rock offers a fantastic array of fish life including nudibranches and small moray eels all the way to big schools of snappers and massive groupers.

Small rock is best dived in the early morning, when the dawn light illuminates the sites' pinnacles and coral structures, giving the whole area a golden glow.



MAFIA

Island Diving

Corinne's Reef



Location: Chole Bay



Max Depth: 20 metres



Certification: All levels

Corinne's Reef is a Mafia Island Diving discovered site named after the mother of one of the owners, who stumbled upon this site whilst accompanying on some exploration.

This site has a wide variety of corals, sponges and interesting formations. The actual reef starts with 3 tongues of coral separated by pure white sandy patches. On the reefs themselves one can expect to see plenty different types of hard corals as well as small sponges and anemones. One can also venture off the reefs to explore the sea grass where you can spot snake eels, nudibranches and large rays resting on the sand.

Here it is common to see green turtles, large schools of oriental sweetlips and big schools of surgeon fish. There are still opportunities to explore this reef further and discover what other wonders there are on offer.





MAFIA

Island Diving

Coral Garden



Location: Chole Bay



Max Depth: 18 metres



Certification: All levels

Every dive centre has their own 'coral garden' but we like to think ours is particularly stunning! It starts with a very large area of beautiful coral bommies in just 8 metres of water where one can spot a resident stingray, shrimps and leaf fish.

The site then continues as densely packed coral, continuous in some parts and in others the coral is separated by sea grass or sandy patches; the perfect environments for foraging fish. The dive site then continues on and finishes as a steeply sloping bank reef with giant morays, big marble groupers and the occasional reef ray.

The shallow water offers a lot of natural light making this site perfect for photographers. One can see turtles in the shallows, a wide variety of reef fish and Napoleon wrasse, electric rays and plenty of macro critters.





MAFIA

Island Diving

Kwaza's Reef



Location: Chole Bay



Max Depth: 16 metres

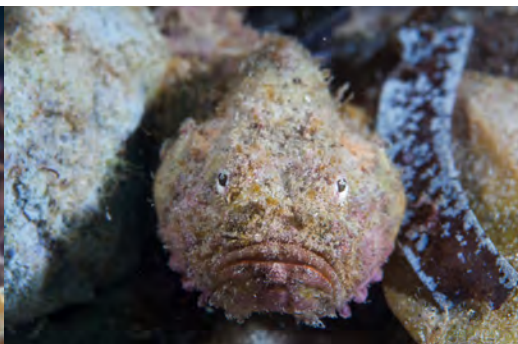


Certification: All levels

Kwaza's reef is named after our operations Manager, who has been diving off Mafia for just under a decade. The owner's of Mafia Island Diving have always been keen on exploring and who better to ask where to start than the guy who has been here since it began?

Kwaza mentioned a beautiful reef to the left of the bay where he spotted a giant frogfish around 6 years before. We ventured out and were blown away with the coral pinnacle we were making our way around. A mixture of beautiful hard and soft coral formations that explode from 16 metres up to just below the surface. As a joke, a signal was thrown to Kwaza asking where the famous frogfish was? He looked left, looked right, smiled and pointed it straight out to us!

Besides beautiful corals, Kwaza's reef is nicely populated with all the usual reef fish, crabs, shrimps, sporadic turtles and schooling fish passing by.





MAFIA

Island Diving

The Shoulder



Location: Chole Bay



Max Depth: 26 metres



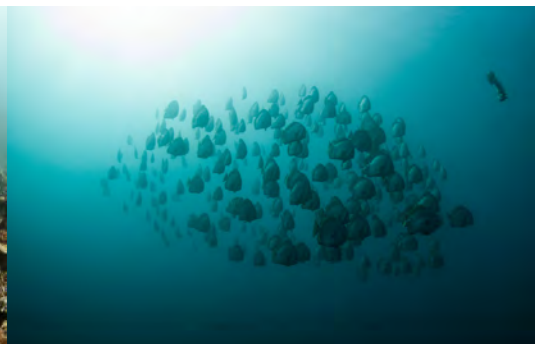
Certification: Advanced

The shoulder is the name given to Mafia's 'adrenaline' dive.

We dive this site with a very strong current which gets everyones hearts beating as they glide across the bottom of the Ocean. The maximum depth on this site is around 26 metres and typical sightings include big schools of fish, giant turtles, groupers and rays and guitar sharks.

The journey to this site is around 45 minutes as we drop into the water just at the edge of Chole bay. The descent is fast, and once at depth we orient ourselves in a westerly direction and fly into the bay.

This site is difficult, dive conditions are tough and a degree of fitness is imperative, but once you are on path with the current, it is one of the most exhilarating dives available around Mafia!





MAFIA

Island Diving

The Canyon



Location: Chole Bay



Max Depth: 20 metres



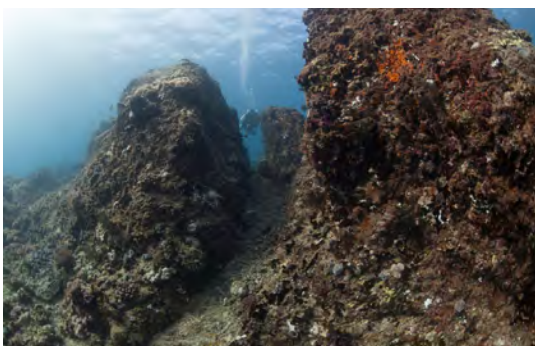
Certification: All levels

The Canyon is a recently discovered site by Mafia Island Diving found at the edge of the bay close to the Kinasi pass reef system.

This dive offers spectacular topography, with big rock formations that huddle together and split, making for a very interesting playground for divers. Typical reef life include schools of reef fish such as snappers, fusiliers and surgeons. Baraccuda, trevally and groupers are regularly seen as well.

One can also take the time to examine the rock faces for macro finds such as nudibranches, shrimps and flatworms. When the water is a little colder, this is the perfect spot to bump into eagle rays, as David found out on his second exploration dive here.

With clear water and strong light, the Canyon is a spectacular spot for some breathtaking views and photography opportunities.





MAFIA

Island Diving

Pole Pole Reef



Location: Shore



Max Depth: 12 metres



Certification: All levels

Another Mafia Island Diving discovered site, this reef found from the beach runs parallel to the shore.

This site is the perfect spot for first time-divers and those who would like a convenient, easy site to discover or re-discover the underwater world. The reef is a mixture of rock bommies and soft corals and anemones, making for a very pretty underwater journey.

Here one can see a variety of reef fish and critters that vary from small shrimps to medium sized fish. The dive can be done as shallow as 5 metres or as deep as 12 depending on how you are feeling. This dive site also has the potential to be a very interesting night, as it comes alive with the weird and wonderful as the sun slowly dips below the horizon.

The reef was named after the hotel off which it is located but also as it is the perfect reef to take 'pole pole', slowly, slowly.





MAFIA

Island Diving

The Hill



Location: Shore



Max Depth: 12 metres



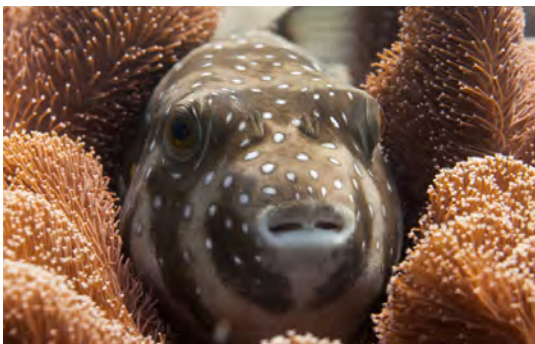
Certification: All levels

Another Mafia Island Diving discovered site, The hill is a beautiful field of corals found just off the beach.

This site is an excellent spot for first time divers. The corals here are impressive, with a nice field of staghorn and a beautiful hill formation of submassive corals.

Typical sightings here are of a variety of reef fish as well as smaller critters such as shrimps, crabs, nudibranches and stingrays. We have also come across a few turtles exploring the area!

This is an excellent dive for nervous divers who are looking for a pretty, easy dive to get back underwater and feel comfortable.





MAFIA

Island Diving

Dindini Caves



Location: Outside



Max Depth: 26 metres

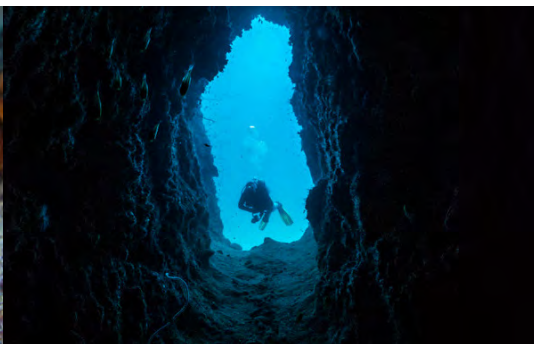


Certification: Advanced

Dindini is a wall found outside the bay running alongside the Eastern side of Mafia Island.

At its most Northern tip we have this site, the Dinindi Caves. Here one can explore a series of small cavern, overhangs and outcrops which are home to some oversized groupers and big schools of snappers, fusiliers and much more!

If one takes a moment to look out to the blue, we quite often come across pelagic species such as tuna and wahoo. The blue is also an excellent area to look out for passing pods of dolphins, the odd reef sharks and giant reef rays as they dart by.





MAFIA

Island Diving

Dindini Wall



Location: Outside



Max Depth: 26 metres



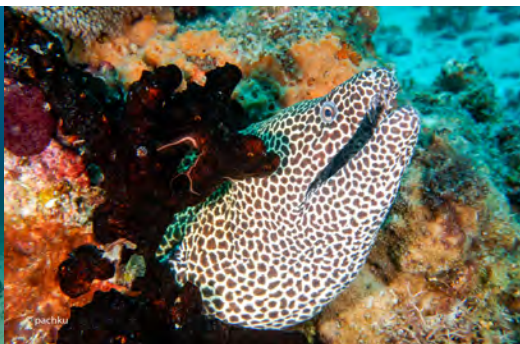
Certification: Advanced

This is a rock wall from 8 metres down to 28 metres, with small caverns, overhangs and an archway which makes for a spectacular and exciting dive. There is lush growth of sedentary filter feeders and algae on the upper part of the wall; seafans and whip corals lower down.

As you dive further on, the wall develops to include many small walls interspersed with shelving reef, offering a great variety of soft and hard corals and more reef fish.

There are very many Napoleon wrasse and big groupers as well as huge variety of schooling fish. Here it is common to encounter huge rays and several species of pelagics. Out to the blue one could have the chance to encounter dolphins, sharks and the odd devil ray.

This wall is so long, variable and interesting that it can be dived multiple times with each time being different from the last.





MAFIA

Island Diving

Jina Wall



Location: Chole Bay



Max Depth: 26 metres



Certification: Advanced

Lying at the northern tip of Jina Island, ranging in depth from 8 to 26 metres is Jina Wall. At the base of a small, vertical wall that has shallow caverns and overhangs, this site bottoms out in a gravel field.

Jina wall is one of our favourites for a rough-mannered, persistent, over friendly and very large potato grouper who dominates every dive. Here it is also possible to spot pelagics, large schools of fish and massive rays.

We quite often see turtles and sharks resting on the bottom or gliding pass the wall.

This wall is so dramatic and lively that it can be dived more than once, feeling like a unique site each time.





MAFIA

Island Diving

Mikadini



Location: Outside



Max Depth: 25 metres



Certification: Advanced

Mikadini is a gently sloping fringing reef that cascades down to 25 metres with many brightly coloured soft corals.

Home to many mid-size groupers and inquisitive blue-spotted trevally, which are common on all Mafia dives. This site is close to and a continuation of the fringing reef complex near Kinasi Pass.

One can expect to see large schools of fish, sharks, turtles and large reef rays. It is also possible to see passing pelagics as well as smaller, typical reef friends such as scorpion fish and crocodile fish.

Mikadini often has a nice current, making for a very exciting drift dive. Mikadini is a very long reef and is also worth diving multiple times to see every inch of this beautiful area!





MAFIA

Island Diving

Juani Reef



Location: Outside



Max Depth: 26 metres



Certification: Advanced

Juani reef is one of the only true fringing reef complexes found in Mafia, running the full length of Juani Island on the Seaward side.

Here the reef slopes down to around 26 metres and is a favourite due to its pink/purple hue as a result of the corals found there.

On this site it is common to see big green turtles whom feed in the waters just off the Island where they nest. Also found here are the usual schools of fish, giant trevallies, large reef rays and the smaller creatures such as nudibranches, scorpion fish and several species of small reef fish.

Juani reef is extremely long, and can be dived multiple times to see a different section on each descent.

