

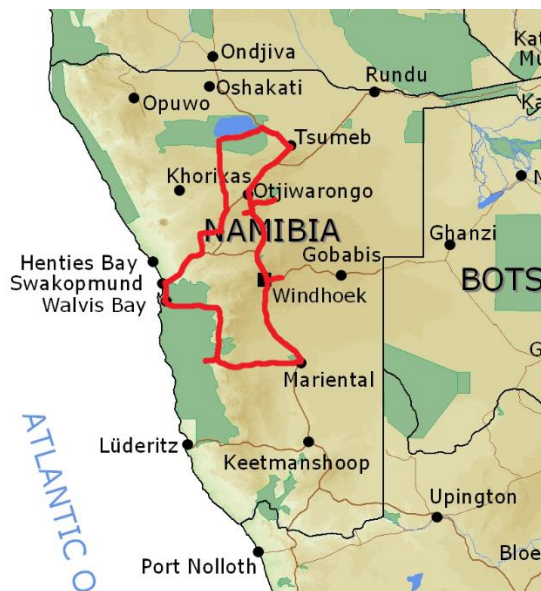
# 14 DAYS - NAMIBIA HIGHLIGHTS

## GUIDED TOUR (SILVER OPTION)

Valid until October 2025  
for 2 - 8 persons



The best Namibia has to offer awaits you on our 14-day round trip. Experience endless expanses, **contrasting landscapes** of all shapes and colours, **the traces of ancient cultures**, and an overwhelmingly large **variety of wild animals**. You will visit the red dunes of the **Kalahari Desert**, see some of the tallest dunes on the planet at **Sossusvlei** in the Namib Desert, take in the quaint, yet modern, coastal town of **Swakopmund**, and the imposing granite peaks and boulders of the **Eroongo Mountains**, before immersing yourself in the amazingly diverse wildlife of the **Etosha National Park**. A visit to the **Waterberg** with its unique flora, and the **AfriCat Foundation** experience at Okonjima are also not to be missed.



## Itinerary

### Day 1

#### *Arrival in Windhoek*

You'll be picked up at the airport by your tour guide and driven to your first stay, in the middle of the bush. You can relax in the garden and at the pool, from where you have a beautiful view of the surrounding farmland. In the afternoon you go on a farm tour and then indulge in a delicious dinner.

(approx. 25 km, travel time approx. 30 min.)

*Guesthouse Voigtland (incl. farm tour)*



### Day 2

#### *Drive to the Kalahari semi-desert*

Enjoy your first morning in Namibia and indulge in breakfast before driving via Windhoek, Rehoboth, and Kalkrand into the Kalahari. At sunset, you take a nature tour in an open-top off-road vehicle through the red longitudinal dunes, which are up to 30 m high and are home to the typical flora and fauna of the Kalahari Desert.

(approx. 280 km from Windhoek, travel time approx. 3 hours)

*Kalahari Anib Lodge (incl. sundowner drive)*



### Day 3

#### *Sesriem/Sossusvlei*

You cross the spectacular Tsaris Pass and enter the Namib Desert, where the dreamlike landscapes of the Namib Rand offer a glimpse of what you can expect over the next few days: the unbelievable vastness of the World's oldest desert, with isolated inselbergs and dune landscapes. In the afternoon, you can already visit the Sesriem Canyon.

(approx. 310 km, travel time approx. 4 hours)

*Sossusvlei Lodge near the park entrance*



### Day 4

#### *Sossusvlei*

Early in the morning, you drive to Sossusvlei where you'll see the highest dunes in the world. As the sun is still quite low in the morning, the high sand dunes shimmer golden, yellow and reddish on one side, but are dark and shadowy on the other, making the dune ridge stand out razor-sharp. A short hike will take you to the photogenic Dead Vlei with its dead tree trunks. The drive then continues north via Solitaire to the interesting Rostock Ritz Desert Lodge.

(approx. 260 km, travel time approx. 4 hours)

*Rostock Ritz Desert Lodge*

### Day 5

#### *To Swakopmund*

Today you pass the Gaub and Kuiseb Canyons and cross the central Namib Desert, where you're sure to see ostriches, but maybe also springboks, zebras, and oryx antelopes. Via Walvis Bay you reach the coastal town of Swakopmund, where you spend the night right next to the sea and where dinner is booked in a restaurant overlooking the ocean.

(approx. 230 km, travel time approx. 4 hours)

*Beach Lodge*

### Day 6

#### *Swakopmund*

In the morning you take a very interesting boat trip in the Walvis Bay lagoon and get to see seals, dolphins, flamingos and pelicans. Many activities are possible in the afternoon (optional).

(approx. 90 km, travel time approx. 1 hour)

*Beach Lodge + catamaran trip included*



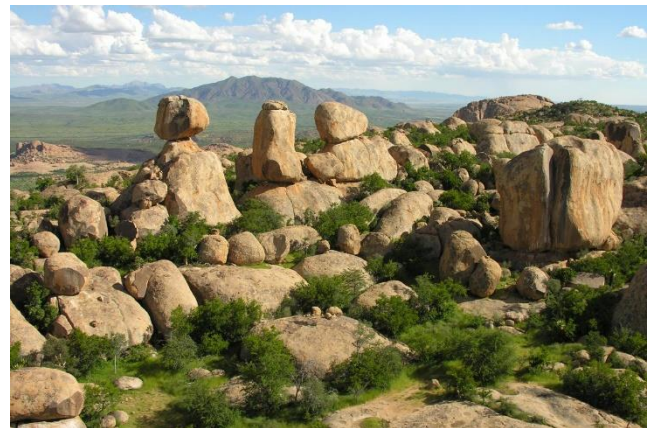
### Day 7

#### *Erongo Mountains*

You bid farewell to the sea and drive to the Erongo Mountains today, looking north along the way to spot the majestic Spitzkoppe, also known as the Matterhorn of Namibia, which rises 600 meters above the surrounding plain. Your lodge is nestled between bizarre granite rock formations.

(approx. 210 km, travel time approx. 2.5 hours)

*Ai Aiba Rockpainting Lodge*



### Day 8

#### *To Etosha National Park*

Today you want to get to the Etosha National Park as quickly as possible. The park is one of the largest animal reserves in the world and is considered one of the most outstanding game parks in Africa. The animals are attracted by the Etosha Pan, a huge depression that is rarely filled with rainwater, but which



at its edge has many waterholes where numerous animals and birds can be found all year round. You go on your first game drives in the park with our guide and, in the evening, can watch the comings and goings at Okaukuejo's floodlit waterhole.

(approx. 320 km, travel time approx. 4 hours)

*Camp Okaukuejo in the park*



### **Day 9 & 10**

*Etosha National Park*

Exciting game viewing awaits you for the next two days, with ample time to visit the various waterholes and spot animals such as giraffe, kudu, zebra, oryx antelope, black-nosed impala, wildebeest, springbok, ostrich and, with a bit of luck, even lions.

(approx. 160 km + rides in the park to the waterholes)

*Mushara Lodge at the eastern park entrance*



### **Day 11**

*Waterberg*

Today you leave the wildlife of Etosha and drive via Tsumeb and Otjiwarongo to the legendary Waterberg. On the way to Tsumeb you can stop to visit Lake Otjikoto, where German World War I forces sank their cannons in 1915. The Waterberg is a natural paradise

with unique vegetation and is known for its rare animal species, colourful birdlife and magnificent landscape.

(approx. 370 km, travel time approx. 5 hours)

*Waterberg Wilderness Lodge*

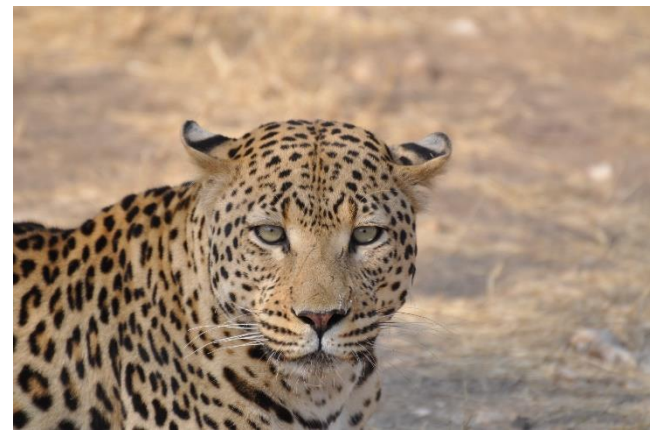
### **Day 12**

*Okonjima*

In the morning, you can hike up to the Waterberg plateau with our guide, where you will see almost all the different types of trees and shrubs that Namibia has to offer. The magnificent view of the vast savannah is ample reward for the climb. Afterwards, a short drive will take you to Okonjima, home of the AfriCat Foundation, where projects with leopards and hyenas are carried out and will be explained to you during an afternoon game drive.

(approx. 110 km, travel time approx. 2 hours)

*Okonjima Plains Camp (incl. game drive)*



### **Day 13**

*Drive towards Windhoek*

Today you drive to a private game reserve just outside Windhoek, where you can relax by the pool and think back on your amazing trip. Then, in the afternoon, you can go on one last game drive.

(approx. 200 km, travel time approx. 2.5 hours)

*Okapuka Safari Lodge (incl. game drive)*

### **Day 14**

*Departure*

Your Namibia safari ends today with a drive to Windhoek and, depending on the time of your departure, the chance for one last stroll through the city before heading to the airport and your flight back home.

(approx. 80 km, travel time approx. 1.5 hours)

**Cost per person:**

Valid until October 2025. The final costs depend on the availability of accommodation.

**For 2 people: ZAR 142,600 per person**

(about CHF 7,010 or about EUR 7,265)

**For 4 people: ZAR 107,800 per person**

(about CHF 5,300 or about EUR 5,490)

**For 6 people: ZAR 96,750 per person**

(about CHF 4,754 or about EUR 4,930)

**For 8 people: ZAR 89,200 per person**

(about CHF 4,385 or about EUR 4,544)

**Single room supplement: ZAR 11,100**

(about CHF 545 or about EUR 565)

(Exchange rate on 18 July 2024)

**Included in the price:**

Full board.

Activities as described.

Accompanied by a professional tour guide in a 4x4 off-road vehicle or VW Crafter/station wagon.

Entrance fees to parks, petrol/diesel.

**Not included in the price:**

Flight.

Tips, drinks.

**Remarks:**

Changes can be made to the program by prior arrangement, and personal wishes can be accommodated.

If certain planned accommodation establishments are already fully booked, small changes to the program are possible.

**Host and organizer:**

Namibia Individual Travel cc

Franzpeter Ackermann, PO Box 1917, Swakopmund, Namibia, Mobile +264 81 279 5339

E-mail: [info@nit.com.na](mailto:info@nit.com.na)

Andrew Bassingthwaighe, 87 Nelson Mandela Ave, Windhoek, Namibia, Mobile +264 81 128 4900

E-mail: [andrew@nit.com.na](mailto:andrew@nit.com.na)

[www.namibia-reisen.ch](http://www.namibia-reisen.ch) | [www.nit.com.na](http://www.nit.com.na)

