

Destination Showcase:

Victoria Falls, Zimbabwe

One of the seven NATURAL Wonders of the World



Telephone +27 11 219 5600
Facsimile +27 11 268 2010/1
P O Box 987
Northlands 2116
Johannesburg South Africa

www.dragonfly.co.za
Southern Africa's Leading Travel Group



Victoria Falls - Zimbabwe

Map of Zimbabwe



Victoria Falls - Zimbabwe

Victoria Falls - Zimbabwe

Boasting the largest single curtain of falling water on earth, aptly named the “smoke that thunders”, Victoria Falls has always been one of the most powerful adventure destinations on the planet!

We pioneered international incentive travel to this region way back in 1992. Now that Zimbabwe is starting to find its feet again, we are at the forefront of the travel revival to this African wonderland.

Victoria Falls is a world heritage site and a premier incentive destination in Africa. It boasts several stunning lodges and hotels to suit all budgets, a wide choice of meeting and function facilities as well as countless ways to really go wild!

The Falls area has always been a safe and popular tourist destination, unaffected by the turmoil witnessed in other parts of the country in past years. The people are friendly and welcoming and the product offerings are exceptional. Tucked into the north-west corner of Zimbabwe, this beautiful region also borders Zambia, Botswana and Namibia. It is possible to incorporate many safari-style forays into any of these countries as part of a larger programme. Let the astounding natural beauty, friendly hospitality and world class adventure opportunities of Victoria Falls entice and astound you!



Access Information

With over 20 international flight connections to Victoria Falls weekly from Johannesburg and Windhoek, Namibia as well as daily flights from the capital Harare, easy access is assured.

Flights to Livingstone (Zambia) and Kasane (near Chobe National Park in Botswana) offer other options of accessing the region. A good road network connects the Victoria Falls area to Livingstone, just 15 minutes drive away, as well as to Chobe Game Reserve, a 90 minute transfer by road.

A new scheduled flight route has also been activated between the Kruger National Park (South Africa) and Livingstone, offering a further access option.



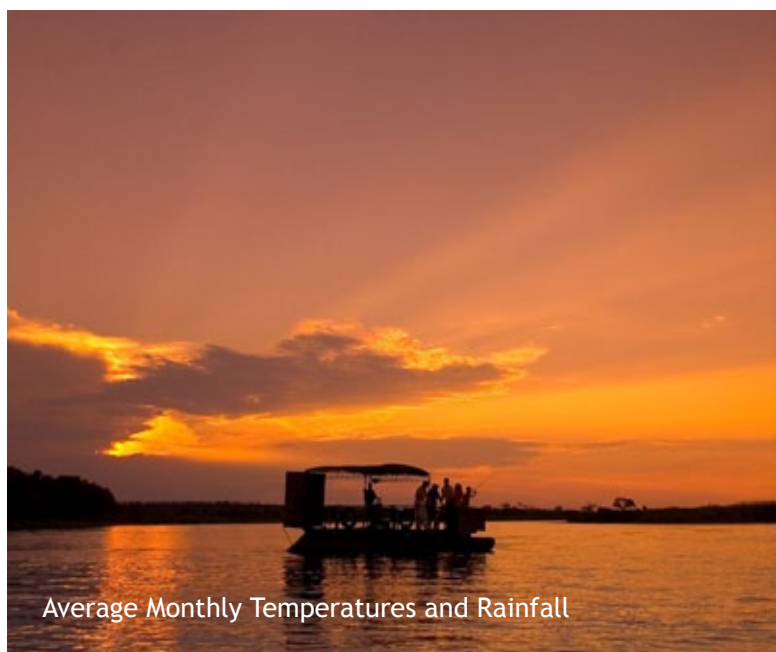
Zimbabwe weather

Climate information

The summers in Zimbabwe range from November through to April and are long, hot and characterized by dramatic, short heavy rainfalls. By comparison, spring, autumn and winter are usually dry, sunny and cool.

Come April, at the end of the rainy season, the Falls are at their peak and most impressive. Certain river activities can be curtailed between March and June due to the height and force of the river.

The dry season is from May to November and is the optimum time to view game in the region. During springtime, in September and October, there is less spray at the Falls allowing for better photo opportunities, although the torrent can be slightly less impressive.



Average Monthly Temperatures and Rainfall

Victoria Falls												
Averages	Jan	Feb	Mar	Apr	May	Jun	July	Aug	Sept	Oct	Nov	Dec
Max Temp °C	29.7	29.4	29.7	29.2	27.4	25	24.8	27.8	31.8	33.4	32.4	30.2
Min Temp °C	18.2	17.9	17	13.9	9.4	6.3	5.6	8.2	12.8	17	18.2	18.1
Max Temp °F	85.4	84.9	85.4	84.5	81.3	77	76.6	82	89.2	92.1	90.3	86
Min Temp °F	64.7	64.2	62.6	57	48.9	43.3	42.0	46.7	55.0	62.6	64.7	64.5
Rainfall mm	97.6	126.3	69.8	24.2	0	0	0	0.3	1.9	26.6	63.6	94.9

Incentive class properties

Victoria Falls Safari Lodge | 4* Property | 72 rooms | www.africaalbidatourism.com

Quick Facts:

Victoria Falls Safari Lodge is set on a high plateau offering uninterrupted views of the surrounding bushveld and spectacular African sunsets. It is centrally located for easy access to town, the Falls, adventure activities and safari experiences.

The newest additions to the lodge are four two-bedroom suites and two three-bedroom suites, ideal for families. All the safari suites are split-level and fully air-conditioned.

Uniqueness for Incentives:

- Dinner overlooking the waterhole
- “Vulture restaurant” viewing experience
- African Boma dinner experience
- Private bush dinners

On Site Facilities:

- 2 restaurants
- Bar
- 2 indoor meeting rooms
- 3 additional outdoor function venues
- Swimming pool and deck
- Complimentary shuttle bus
- Curio gift shop, internet cafe, activities desk



Victoria Falls Safari Club | 5* Property

Set alongside the Victoria Falls Safari Lodge and high on a plateau, which forms a natural boundary to the Zambezi National Park, Victoria Falls Safari Club offers luxurious accommodation with uninterrupted views of the African bush-veld.

The hotel boasts 16 club rooms and four suites, all decorated in stylish African prints and colours, with sliding glass doors and gauze screens to a private balcony. They each have two three quarter beds, which may be converted to a king-size.

The Safari Club Lounge offers guests additional services such as:

- Complimentary afternoon tea and pastries served from 15h30-16h00
- Complimentary cocktails and snacks served from 17h00-18h00
- Complimentary WiFi throughout the Club Lounge
- Complimentary shuttle service to the Falls, points of interest in Victoria Falls and The Boma - place of Eating

Incentive class properties

Elephant Hills Resort | 4* Property | 276 rooms | www.elephanthillsresort.com

Quick Facts:

This hilltop hotel, which enjoys tranquil views over the Zambezi River and surrounds, is an ideal venue for conferences and large groups in this region. On offer are well-established conferencing facilities as well as an abundance of fantastic sports facilities and entertainment options to round off your stay.

Features:

All rooms have a private balcony, shower, bath, air conditioning, overhead fan, mini bar and satellite TV.

Uniqueness for Incentives:

- 18-hole golf course
- Variety of fantastic venues for functions, meetings and events
- Ideal for active sports enthusiasts and nature lovers
- Premier venue for large groups
- River Activities



On Site Facilities:

- Three restaurants and three bars
- Eight modern conference / meeting rooms
- Spa, swimming pool and gymnasium
- Floodlit tennis courts, squash courts and volleyball courts
- Bowling green



Incentive class properties

Victoria Falls Hotel | 5* Property | 161 rooms | www.victoriafallshotel.com

This classic, five-star hotel, built in 1904, was recently redecorated and refurbished and now combines the charm of the old with the convenience of the new. Set in lush tropical gardens with lily ponds, palm trees and semi-tropical shrubs, it provides the tranquility and seclusion that many guests seek.

The famous Victoria Falls are just a ten-minute walk away using the hotel's private pathway, and "the smoke that thunders" or "Mosi-O-Tunya" in the local dialect, is clearly audible and visible from this luxurious landmark.

Uniqueness for Incentives:

- Grand dining in colonial style at the opulent Livingstone Room
- Stanley's Terrace, with its clear view of the Victoria Falls Bridge, connecting Zimbabwe and Zambia, is renowned for its cocktails and afternoon teas.
- Stunning garden function location
- Sunset cruise on the Zambezi River



On Site Facilities:

- Two restaurants
- Swimming pool and tennis courts
- Lounges, library and reading rooms
- Two Conference facilities
- Business centre
- Chapel
- Spa and hair salon
- Curio shop



Incentive class properties

The Kingdom at Victoria Falls | 4* Property | 294 rooms | www.africansunhotels.com

Quick Facts:

Situated close to the Falls, the Kingdom is an all encompassing pleasure palace. Architecturally styled on the great Zimbabwe monument, its tribal design provides a playful backdrop to the plentiful dining and entertainment options available on site.

Features:

The rooms are built around a lake feature and include en suite bathrooms, personal safes, satellite TV, chairs and coffee table and air conditioning amongst other mod cons.

Uniqueness for Incentives:

- Thrilling casino experiences in the Great Enclosure which also offers a number of restaurants and shops
- 18-hole golf course nearby
- Cost effective option for large groups
- The Leambe conference room can hold up to 80 people and the Thuli boardroom is designed for smaller business groups of up to 14 people.



On Site Facilities:

- Three restaurants and a food court
- Four bars
- Three swimming pools
- Conference room and meeting facilities
- Bank and business centre
- Health and beauty spa
- Children's activities



Incentive class properties

Ilala Lodge | 5* Property | 56 rooms | www.ilalalodge.com

Quick Facts:

Ilala Lodge is ideally situated as it is located closest to the Falls and borders a nature reserve. It is a gracious yet affordable family run lodge with secluded ambiance. Wild animals often graze on the lawns with the spray and thunder of the falls providing a majestic backdrop.

Features:

Spacious rooms with teak furnishings leading onto a patio or balcony, en suite bathrooms with separate shower, air conditioning, overhead fan, satellite TV, tea and coffee facilities.

Uniqueness for Incentives:

- Jetty dinners
- Sunset river cruises
- The Falls on your doorstep
- Ideal for small groups



On Site Facilities:

- Palm restaurant and terrace
- Swimming pool
- Bar
- Small conference facilities



Incentive class properties

The Stanley & Livingstone | 5* Property | 16 suites | www.stanleyandlivingstone.com

Quick Facts:

Set on the Victoria Falls Private Game Reserve, this all-suite boutique hotel epitomises the grandeur of a bygone era. This property is situated 15 minutes from Victoria Falls town centre and is also within easy access of the airport.

Features:

Each suite features a spacious bedroom, an en-suite Victorian-styled bathroom, lounge, secluded patio, air conditioning, mini bar, personal safe, DVD player and satellite television.

Uniqueness for Incentives:

- Sip sundowners overlooking the watering hole
- Educational elephant back safari
- Abundant wildlife on your doorstep
- Game drives and fishing on the reserve
- Bear Grylls Survival academy



On Site Facilities:

- Gardens with stunning views
- Restaurant and bar
- Sun lounge, sundeck terrace and swimming pool
- Conference facilities
- Wine cellar



Incentive class properties

The Elephant Camp | 5* Property | 16 tents | www.theelephantcamp.com

Quick Facts:

Situated in a wildlife sanctuary downstream from Victoria Falls, this small intimate lodge has awesome views of the Masuwe River, the Batoka gorges and the sky-high spray of the Falls. Despite its close proximity to nearby attractions, it is sufficiently secluded to allow for close wildlife interaction.

The lodge features 12 luxury tents whilst Elephant Camp West offers an additional four exclusive tents for families and groups. Each mosquito-proof, tent has a deck veranda overlooking the gorges and is equipped with a fan, bath and outdoor shower.

Uniqueness for Incentives:

- Elephant back safaris
- Dining at the Elephant Wallow
- Involvement with wildlife conservation and habitat rehabilitation
- Cheetah and rhino viewing



On Site Facilities:

- Bar
- Restaurant
- Curio shop
- Pool



Incentive class properties

Victoria Falls River Lodge | 5* Property | 13 tents | www.victoriafallsriverlodge.com

Victoria Falls River Lodge is the first private game lodge set in the Zambezi National Park.

This luxury 13-tent lodge is situated on the banks of the Zambezi River - so close to the Falls you can see the spray in the distance. It is approximately 40 minutes' drive from Victoria Falls Airport.

Erected on raised decks, under vast thatched roofs, each spacious tent has been tastefully decorated in earthy hues and offers a larger-than-king-size bed, free-standing bath, comfortable sitting area and both indoor and outdoor showers. Each private viewing deck affords spectacular views of the river and surrounding natural flora and invites guests to sit back and relax while watching the hippos wallow. Several tents offer private plunge pools and guests can also relax at the central infinity pool which overlooks the river.



Victoria Falls River Lodge's spacious, open-plan design offers cool sanctuary from the African sun. Positioned meters from the river's edge, guests are invited to relax, unwind and enjoy the panoramic views over the Zambezi River after an adventure-filled day.

Stylish regional cuisine is mostly served in the distinctive thatched riverside dining area. Decorated with an Afro-Chic flair, the spacious open-plan seating of the dining area flows out to a sundowner deck and into the airy lounge creating a perfect space for any occasion.



Victoria Falls - highlights

- **Adrenalin Activities and Water Sports**

Being the number one adventure destination, the options at Victoria Falls are endless - from white water rafting, canoeing and boogie boarding on the Zambezi to a gorge swing, flying fox or abseil above it, to name but a few!

- **Abundant Wildlife Experiences**

Track giraffe on a game drive, listen for hippo on a river safari, spot birds on a bush walk, or watch waterbuck crossing the golf course before playing through

- **African Wellness Opportunities**

Many of the lodges offer relaxing spa treatments to help guests unwind in a truly African way



- **Retail Therapy**

Shop for traditional crafts and interesting curiosities in the stores and markets of Victoria Falls town

- **Local Life**

Visit one of the traditional villages in the area where you can meet the locals and learn more about their day-to-day activities



Victoria Falls - unique activities

- **Tram Bridge Tour**

Steeped in history, the Victoria Falls Tram Bridge Tours are a unique journey into the adventure and romance of a bygone age. Both morning and sunset tours begin with a stroll down the red carpet path, which links the iconic, 108-year old Victoria Falls Hotel to the train platform at Victoria Falls Station.

The 19th century-style tram begins its gentle, twenty-minute meander through the vibrant town of Victoria Falls. Its final destination is right in the middle of the Victoria Falls Bridge, which straddles the line dividing Zimbabwe and Zambia.

This historic bridge affords spectacular views directly onto the face of the Falls themselves. The tram seats approximately 32 passengers on eight comfortable benches.



- **Victoria Falls Canopy Tour**

The Vic Falls Canopy Tour is a new eco-adventure in Victoria Falls area, offering a network of slides, trails and rope bridge walkways within the canopy of the hardwood forest of the Zambezi gorges.

The Vic Falls Canopy Tour consists of 9 different slides, varying in length (with the longest being approximately 85m and the shortest being 40m) and 1 cable bridge walkway. The activity duration is 2 to 2.5 hours.



Victoria Falls - unique activities

- **Elephant Back Safaris**

Enjoy a unique opportunity to interact with these majestic giants of the wild

- **Bungee Jumping over the Falls**

Pump up your adrenalin by jumping 111 metres from the old rail bridge near the Falls

- **Flight of the Angels**

A close up view of Victoria Falls from a different angle - in the cockpit of a fixed wing aircraft, helicopter or microlite.

- **Experience the essence of Zimbabwe**

An opportunity to appreciate the arts, crafts and culture unique to this region

- **Visit Botswana for the Day**

Explore the wonders of Chobe National Park by boat or game vehicle to view the worlds largest elephant population - 140,000.



- **Bushtracks Express**

The Bushtracks Express operates a scheduled Victoria Falls Bridge Run, departing from Victoria Falls Station. The Zimbabwe-based train runs every Tuesday and Friday for pre-dinner drinks & canapés to the Victoria Falls Bridge and back. A minimum of two guests is required on the set departure days.

The train is also available for private hire for groups, incentives and special occasions - a minimum of 30 paying guests is required on the scheduled route (maximum capacity is 80 guests).

With a minimum of 50 paying guests, Bushtracks Express allows further flexibility in designing your own route to The Victoria Falls Bridge, Jafuta Siding or even further afield to Dibangombie Siding.

The train experience includes return transfers from any hotel within Victoria Falls city limits to Victoria Falls Station; a welcome drink on arrival; drinks & canapés catered by The Victoria Falls Hotel and South African wines, local beers and soft drinks throughout the trip.



Eating out!

Victoria Falls boasts some fantastic dining venues for incentive groups, where friendly hospitality competes with traditional flavours and superb cuisine for your favour.

Victoria Falls Rainforest Restaurant

Shearwater Victoria Falls' Rainforest Restaurant is located at the entrance of the world famous Victoria Falls. After a long, yet awe-inspiring walk along the edge of the magnificent Victoria Falls, visitors can sit and relax in the natural beauty of the Rainforest. The powerful roar of the Victoria Falls in the distance enhances the ambience.

The restaurant offers basic, yet delicious meals. Look forward to a wide selection of all-day meals and fresh salads, breakfast options, mid-morning tea/coffee with a variety of tasty cakes to choose from. High tea can be arranged for groups of four or more.



Victoria Falls Safari Lodge

Makuwa-Kuwa Restaurant: Inspired by the Royal Drum of local legend, this award-winning a la carte restaurant offers mouth watering pan-African cuisine. It overlooks a water hole and can cater for up to 100 diners.

The Boma - Place of Eating: A unique cultural experience combining a feast of delectable Zimbabwean dishes with traditional dancers and interactive drumming. This partially open air restaurant can seat between 230 and 300 guests and is well worth the visit.

Wild Horizons Sanctuary

The Elephant Wallow: A fun, relaxed venue that overlooks a watering hole, this is the location from where the Elephant back safaris commence. It is the perfect place for a refreshment or light lunch before or after this wonderful safari experience.



Victoria Falls - dining out

Eating out!

Bistro on the Edge

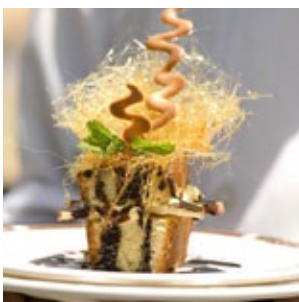
The Bistro On The Edge is a new development going ahead at the current Wild Horizons “Lookout” jump site, located on the edge of the Batoka Gorge, overlooking the beautiful Victoria Falls Bridge, at the first hairpin bend of the Zambezi River, below the Victoria Falls.

The views from this location are panoramic and breathtaking. The Wild Horizons highwire activities (such as the Gorge Swing and Vic Falls Canopy Tour) will continue to operate from the same location, enabling jumpers and their travel companions to enjoy fresh, modern and Mediterranean cuisine, as well as a lively cocktail menu, whilst observing the busy highwire activities going on in the chasm below.

Victoria Falls Hotel

Livingstone Room: The colonial elegance of the Livingstone Room is the perfect backdrop for a grandly themed dinner and dance function for up to 120 guests. Local bands to entertain.

Jungle Junction: Ideal for incentive groups, this venue can accommodate up to 140 and epitomises the spirit of Africa through its fusion of African flavours and entertainment.



Stanley’s Terrace: Up to 100 guests can sample the treats of a traditional high tea or savour canapés and cocktails at sundown with spectacular views of the bridge and Falls creating the perfect backdrop.

The Kingdom

White Waters: A fantastic location for large groups of up to 240, the restaurant and terraces overlook the Pool Island and are perfect for lunch and dinner buffets.

Ilala Lodge

Enjoy Zimbabwe’s finest à la Carte cuisine in The Palm Restaurant, featuring tranquil views and elegant colonial ambience. Kubika Restaurant will whisk you away on a culinary adventure, serving delicious crocodile, kudu and ostrich dishes with a Mongolian twist.

