

SELINDA CAMP

SELINDA RESERVE | NORTHERN BOTSWANA

GREAT PLAINS

CONSERVING AND EXPANDING NATURAL HABITATS

Set in one of the most pristine wilderness areas left on our planet, Selinda Camp rests on the banks of the Selinda Spillway, as it enters the Linyanti River.

The private 130,000-hectare Selinda Reserve boasts elephants by the thousands, regular sightings of the Selinda pack of African wild dogs as well as the famous Selinda Lion Pride recently featured in the National Geographic film "Birth of a Pride" by Dereck and Beverly Joubert. The area has a sense of remoteness, a true spirit of Africa, and is a great example of Botswana bush embodying a variety of species and rare animals.

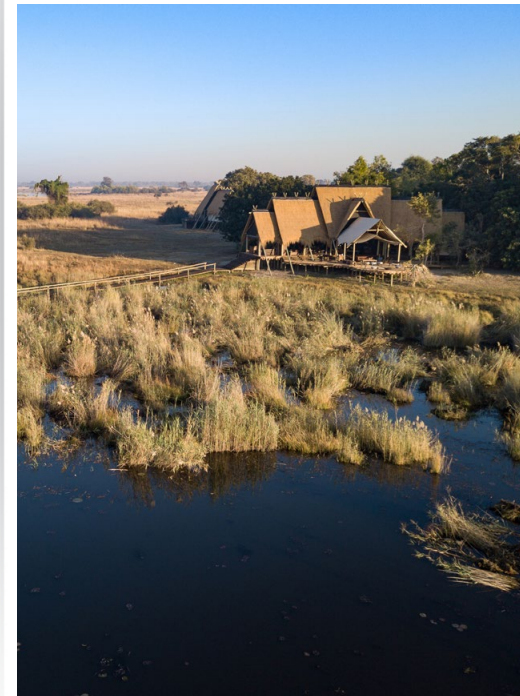
Selinda Camp, a Relais & Châteaux member, represents the meeting place of three cultures; European, Mokololo and Bayei and is themed to resemble that of the thatched village of Sangwali.

With the main area's colour palette inspired by wood, brass and copper, Selinda Camp's architectural design elements centre around Water, Air, Earth and Fire, all of which ground the design. Selinda Camp's design pays homage first and foremost to Water, with splashes of blue and crystal-clear private guest swimming pools offering views over the equally immaculate Selinda Spillway to ease your arrival, usually by boat.

The central lounge and main camp area, is a tribute to Air and the afternoon breezes ripple the endless sea of nearby grasses.

Earth is represented in the cornucopia of home-grown meals lovingly prepared in our kitchens, fresh from the earth, and the bright flames of our evening Fire, set outside under a majestic tree's canopy and stars further completes the ethos of being in harmony with nature's natural elements. There is in some cultures a fifth element, 'metal', which is also incorporated into the design.

The camp has three expansive guest suites and one separate two-bedroom tented suite, the Selinda Suite. The safari drives, walks, boating, tracking, birding and other bespoke viewing activities are designed to place you in front of the best wildlife the area has to offer for a unique one on one life changing experience, from leopards to elephants and hippos and aim to tick off as many as the 200 or more bird species in the area.



SELINDA CAMP

SELINDA RESERVE | NORTHERN BOTSWANA

CAMP FEATURES:

Selinda Camp can accommodate a maximum of 6 guests (excluding The Selinda Suite).

Total Number of Bedrooms:

3 Double or twin configuration suites

Separate 2-bedroom Selinda Suite is available for guests to reserve

1 guide room with 2 three-quarter beds and a shared en-suite bathroom.

Type of Lodge

Réserve Collection Safari Camp

Lodge Season & Opening

Year Round

Ideal length of stay

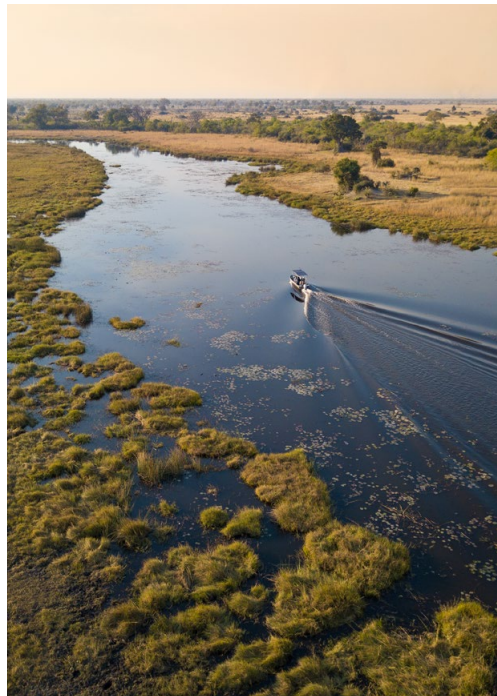
3 - 4 Nights

CAMP CO-ORDINATES

18°31'57.8"S 23°31'19.4"E

ACCESS DIRECTIONS

- Light aircraft transfers from Kasane (55 mins) and Maun (45 min) airports;
- Private Air charter access available;
- Selinda Camp is a 60-minute drive or a 40 minute boat ride from its airstrip;
- Airstrip Co-ordinates: 18°34'41.9"S 23°29'16.8"E;
- Airstrip length: 1000m



ACTIVITIES

With a maximum of just six guests, Selinda Camp offers complete flexibility.

Wildlife drives

Early morning, late afternoon/ evening or even full-day safari drives occur in some of the most luxurious wildlife-viewing vehicles. Each Toyota Land Cruiser is open-sided, canopied, and customised for photographers with fold-down screens, raised roofs, photographic bars, and multi-plug invertors, all in keeping with the origins of Dereck & Beverly Joubert as National Geographic photographers. We choose to accommodate four guests (or two couples) on a safari vehicle; however, if a family or group travels together, we would easily accommodate up to six guests. Our vehicles also have fridges stocked with drinks and snacks, ready for longer days out if the wildlife viewing is exciting and just too hard to leave.

Every day is different on safari. Safari Drives often start at sunrise, returning to camp for a late breakfast and departing again mid-afternoon after tea before returning just after sunset. However, guests can often spend the entire day out in the veld with a packed breakfast, lunch, and beverages if they wish. Our safaris will often continue into the night in search of nocturnal species. Night drives are incredibly prolific, and while they take patience, sightings commonly include lesser-known nocturnal mammals and even lion and hyena hunts.

SELINDA CAMP

SELINDA RESERVE | NORTHERN BOTSWANA



Our schedule is flexible, and guests are encouraged to create their own itinerary according to their interests with guidance and recommendations from our professional guides.

Guided walks

If stretching one's legs and getting a feel for Africa by foot is the guest's preference, then it's possible to arrange morning walks.

Photography

- The camp offers custom built Land cruisers specially designed for our conditions and photography (fold-down screens, raised roofs, photographic bars, multi-plug invertors). The Cruisers are fully stocked with drinks and snacks;
- Each of Selinda's guest suites has a professional camera set, including a camera body and lenses. Photos will be downloaded to a USB flash stick on guest's departure. Each suite comes with a pair of high-quality binoculars for guest use as well.

Boating

Selinda is primarily a land-based activity camp; however, boating is possible on the Selinda Spillway in one of the camp's powerboats, water level dependent.

Fishing

You can toss the bait with some rod/reel fishing from March to December each year, on a catch and release basis, water level dependent.

Private vehicle option

Available for more flexibility upon request at extra cost, not compulsory for families travelling with children.

Private Guides

Private guides are encouraged and welcomed.

Scenic Flight and Champagne Stop

Enjoy an aerial viewing experience with great scenery across the Linyanti/Savuti and Selinda Spillway. Add a 15-minute champagne stop on palm island en route. Must be booked in advance and is subject to extra cost and availability

CENTRAL FACILITIES

- Large thatched main area with two lounges and large dining area;
- Coffee and tea station;
- Climate controlled walk-in wine cellar;
- Fire pit and seating;
- Great Plains Safari Boutique selling locally and regionally produced crafts, many of which support local community projects in the nearby Okavango panhandle.

SELINDA CAMP

SELINDA RESERVE | NORTHERN BOTSWANA

The Boutique also stocks the d&b clothing line: Dereck and Beverly Joubert have inspired this bespoke range of clothing they typically wear, and which is perfect and cool while on safari yet elegant when in the city.

All materials are responsibly sourced.

Visit www.greatplainsconservation.com/safariboutique

FOOD AND BEVERAGE

- Our world-class meals are Relais & Châteaux recognised;
- All meals included and prepared by our Executive Chefs and their teams;
- All drinks and beverages are included, including imported spirits and champagnes;
- Group meals and/or individual tables, a la carte (menu options);
- Indoor and outdoor dining;
- Private dining on guest's private verandah available on request;
- All dietary requirements are catered for from regular to vegan to children; prior notice required;
- We are extremely flexible on timings. Picnic breakfasts or lunch (or both) are the norm due to very active safari drives, often delivered to the bush!

ACCOMMODATION DETAILS

Bedroom features

- Large, tented suites under thatch on raised, wooden decking with large, private verandah;

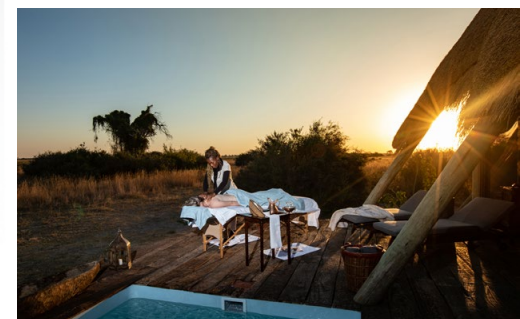
- Each of the 3 suites has an outdoor seating area and private swimming pool;
- Bar fridge with drinks of choice;
- Tea/Coffee station;
- Mosquito netting on all tent sides and over beds;
- Standing fan;
- Solar powered, environmentally friendly air-conditioning system over the bed;
- Honeymoon suite is not specific, but usually Suite 3;
- Either twin or double bed configuration;
- The Selinda Suite is a 2-bedroom private accommodation unit with private pool - separate fact sheet available.

Bathroom features

- Each suite has en-suite bathroom with copper tub, indoor shower, flush loo, dressing area and double basins;
- Hot and cold running water;
- Soap, shampoo, conditioner, lotion and hairdryers provided.

ACCOMMODATING CHILDREN AND SHARING ACCOMMODATION

- Children are accommodated from a minimum age of 6 years;
- Triples for children sharing with adults can be arranged upon request;
- Child rates are applicable for up to one child 15 and younger sharing with two adults in a suite; Children 16 and older will pay applicable adult rates and be accommodated in a separate suite;



SELINDA CAMP

SELINDA RESERVE | NORTHERN BOTSWANA

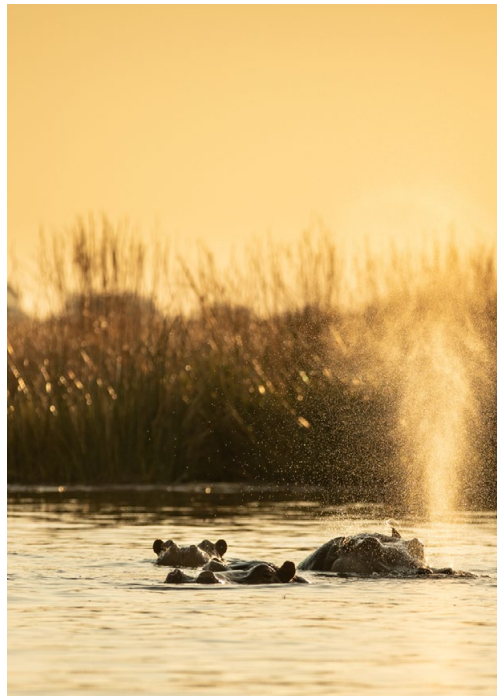
- Families will be combined with other guests on all activities unless a private vehicle is booked and paid for;
- Scheduled wildlife viewing activities, including safari drives, guided walks, and power boating, are available to guests from 6 years when accompanied by their parents or guardians. Where available, canoe and mokoro activities specifically welcome guests aged 8 years and above;
- Young children must be supervised as the camp is open with high predator densities in and around camp and there is water surrounding camp. The camp also has pools which are not covered;
- Great Plains Young Explorers program – thoughtfully designed to explore a range of experiences and topics from birding to cooking to art to tracking wildlife.

SPA

The Spa at Selinda is a relaxing and inviting space, located privately above the wine cellar. All treatments and ingredients used in your spa treatments were personally chosen by Dereck and Beverly Joubert in conjunction with Spacology. Spa treatments are at an additional cost.

FITNESS

- Yoga mat, light weights available in each suite;
- Stationary exercise bikes.



LAUNDRY

Included in nightly tariff - next day service, weather permitting;

POWER AND COMMUNICATION

Power

- The camp is run by a Tesla solar system with generator back-up;
- The system produces 220V, 24-hour electricity to the suites and main area;
- Universal plug points in each suite.

Internet & Mobile

- Wi-fi available in guest suites;
- No mobile signal.

HEALTH AND SAFETY

Health

- Malaria: Minimal exposure risk– Malaria prophylaxis are recommended if guests are concerned; however, this is a remote area with little occurrence;
- Guests must hold comprehensive medical insurance and emergency evacuation insurance;
- Senior staff all has first aid training;
- Nearest decent medical facility is in Maun, and then Johannesburg.

SELINDA CAMP

SELINDA RESERVE | NORTHERN BOTSWANA



Possibility of Disabled access

- The suite closest to the main area is perfectly located for guests with walking challenges. The suite offers a ramp to access the suite from the pathway;

Safety

- This remotely located camp is unfenced to wild animals that do move through the property especially at night;
- Fire extinguishers in every suite.

MONEY MATTERS

Safes

Provided in every suite.

Accepted Payment on Location

- Staff gratuities can be paid by credit card or in Botswana Pula, South African Rands, US Dollars (2004 bills or later only) or GB Pounds;
- Visa and MasterCard credit cards are accepted (No Amex or Diners).

The Team

Lodge Owners

Great Plains Conservation

FOUNDATION INITIATIVE

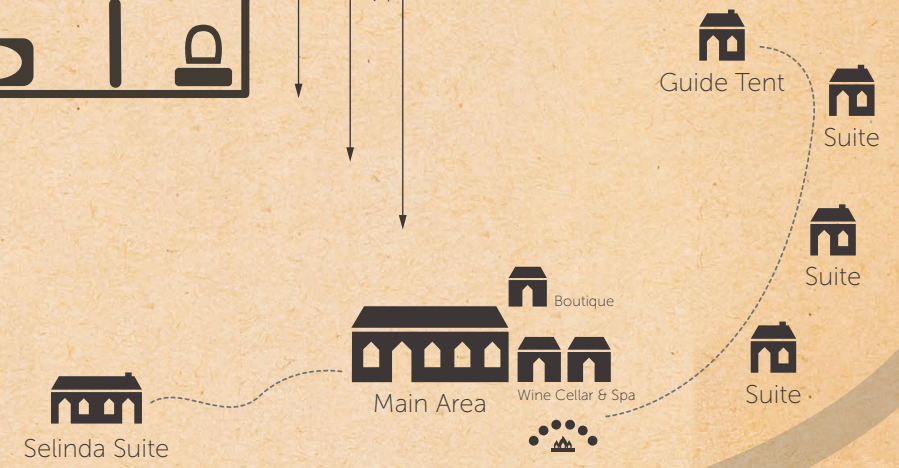
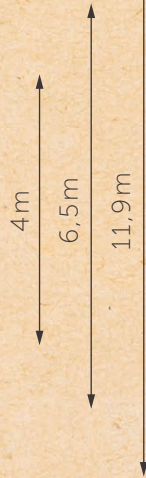
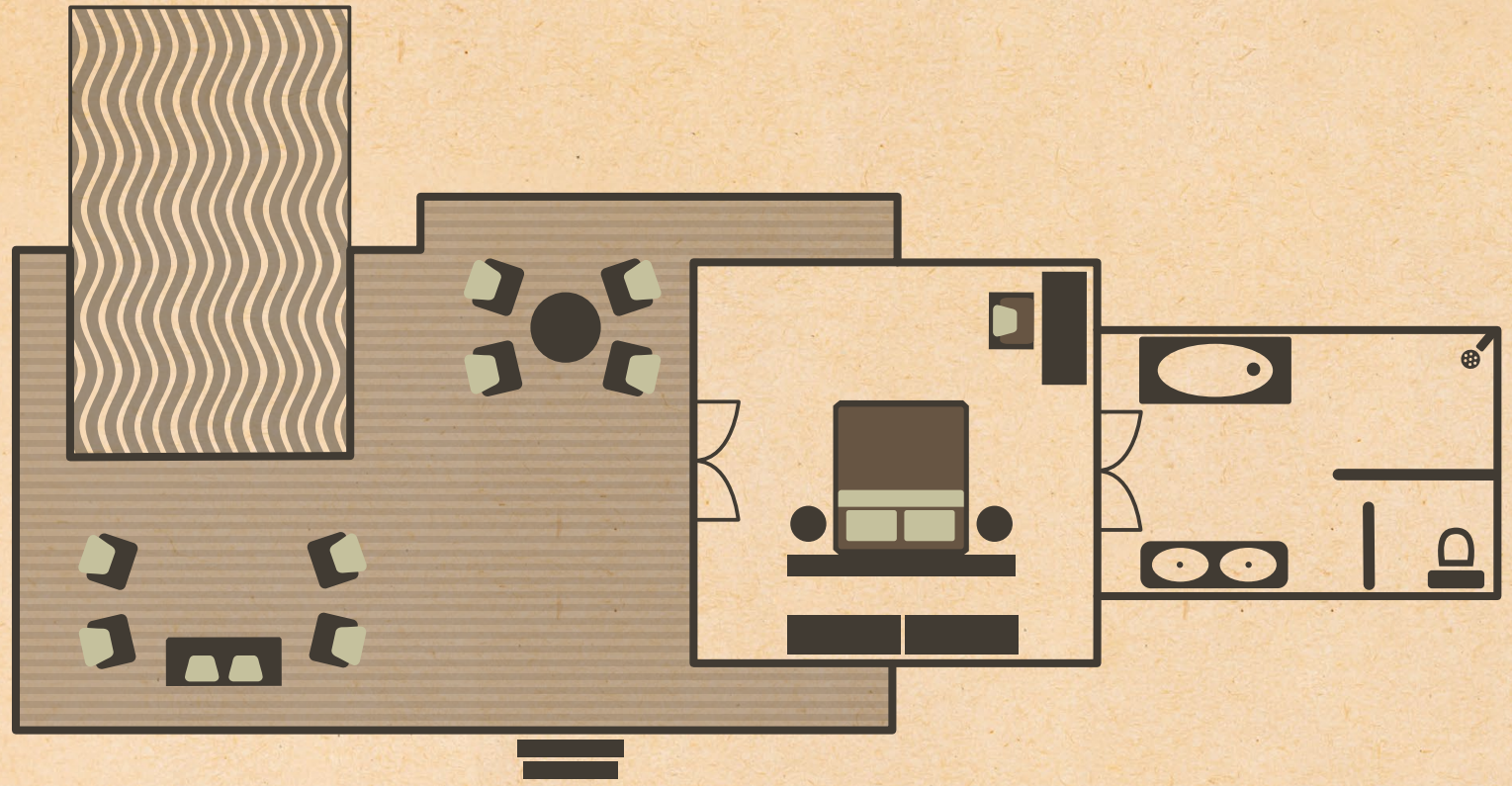
Solar Mamas

The Great Plains Foundation's Solar Mamas developed the Solar Mama initiative to address the lack of economic opportunities and electricity deficit in remote villages bordering Botswana's Okavango Delta. Nine Solar Mamas left their villages in Botswana to attend a six-month solar power training program in India through Barefoot College International. They each returned home with the skills to build, install and maintain solar home lightings systems. These Solar mamas are empowered to establish and run a business and provide sustainable energy for their community. The project's current phase aims to supply equipment for the Solar Mamas to electrify rural households in this remote region where only 35% of homes are electrified, thereby improving the quality of life in our surrounding communities. Learn more at www.greatplainsfoundation.com

In addition to our own programs Great Plains Foundation keeps a list of school needs in the countries where we work. Needed items can be hand-carried by travelers or we can help purchase them locally. To learn more or to help support students and educators as part of your trip please reach out info@greatplainsfoundation.com

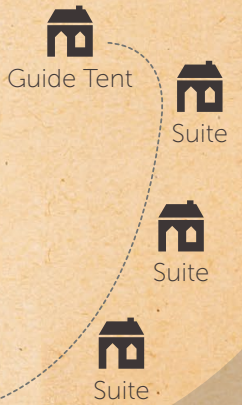
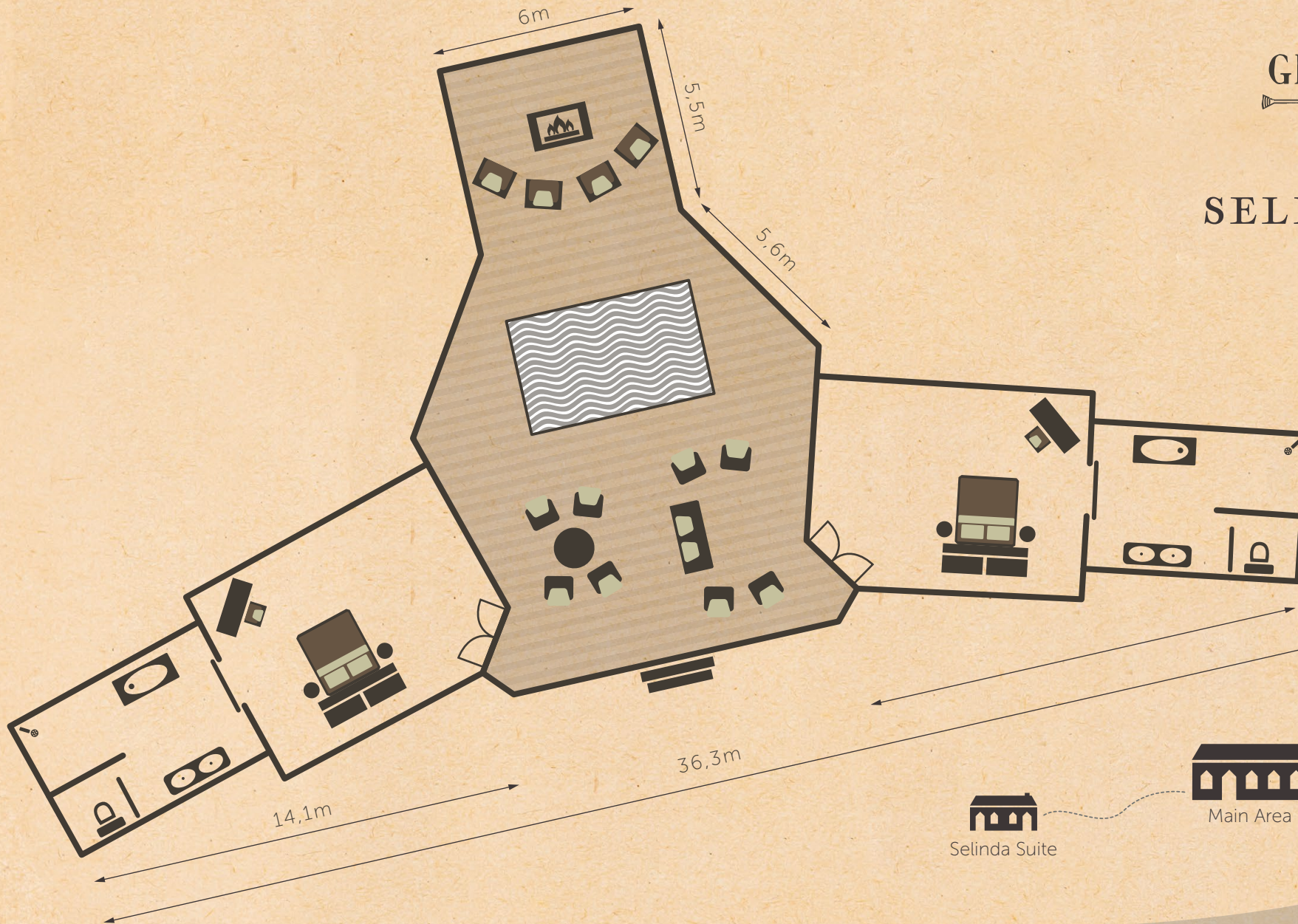
SELINDA

GUEST SUITE



SELINDA SPILLWAY

SELINDA SUITE





Namibia

*Bwabwata
National Park*

*Mudumu
National Park*

Kasane

Chobe Forest Reserve

Selinda Explorers Camp ●

● Selinda Camp &
Selinda Suite

● Zarafa Camp &
The Dhow Suite at Zarafa

Chobe National Park

Selinda Spillway

● Okavango Explorers Camp

Sitatunga Private Island &
Sitatunga Private Island Suite ●

● Duba Explorers Camp

● Duba Plains &
Duba Plains Suite

Moremi Game Reserve
Okavango Delta

GREAT PLAINS

CONSERVING AND EXPANDING NATURAL HABITATS



Botswana

● Maun

GREAT PLAINS CONSERVATION
STRIVES TO FIND THE RIGHT FORMULA OF
CONSERVATION, COMMUNITIES AND COMMERCE
THAT MAKES A LASTING, SUSTAINABLE DIFFERENCE
TO THE WORLD'S ICONIC WILDLIFE
AND WILDERNESSES.

*Nxai Pan
National Park*

BOTSWANA CAMPS

ACTIVITY	ZARAFKA CAMP & THE DHOW SUITE AT ZARAFKA	SELINDA CAMP & SELINDA SUITE	DUBA PLAINS CAMP & DUBA PLAINS SUITE	SITATUNGA PRIVATE ISLAND & SITATUNGA PRIVATE ISLAND SUITE
Camp Classification	Réserve Collection	Réserve Collection	Réserve Collection	Réserve Collection
Location	Selinda Reserve	Selinda Reserve	Duba Plains Concession	Sitatunga Private Reserve
Size of concession / reserve	130 000 Hectares / 321 237 Acres	130 000 Hectares / 321 237 Acres	33 000 Hectares / 81 500 Acres	Not relevant
Number of Suites / Tents	4 Suites	3 Suites	5 Suites	2 Suites
Family Accommodation	The Dhow Suite at Zarafa	The Selinda Suite	The Duba Plains Suite	The Sitatunga Private Island Suite
Children can be accommodated from:	6 Years	6 Years	6 Years	6 Years
Day and Night Safari Drives	Yes	Yes	Yes	n/a
Private Activities (at an additional charge)	Yes (Included for Dhow Suite)	Yes (Included for Selinda Suite)	Yes (Included for Duba Plains Suite)	Private boating
Guided Walks	Yes	Yes	Yes	Yes
Boating (*water level dependent)	*Yes	*Yes	Yes	Yes
Mekoro and/or Canoeing (*water level dependent)	n/a	n/a	Mekoro	*Mekoro
Fishing (Seasonal and *water level dependent)	*Yes	*Yes	Yes	Yes
Scenic Flights and Champagne Stops	Available at an additional charge	Available at an additional charge	Available at an additional charge	Available at an additional charge
Main Swimming Pool / Private Plunge Pools	Private Plunge Pool	Private Plunge Pool	Private Plunge Pool	Private Plunge Pool
Shower	Indoor & Outdoor	Indoor	Indoor & Outdoor	Indoor
Bath	Yes	Yes	Yes	Yes
Hairdryers (low-voltage)	Yes	Yes	Yes	Yes
Mosquito Nets	Yes	Yes	Yes	Yes
Eco cooling system over bed	Yes	Yes	Yes	Yes
Fan	Yes	Yes	Yes	Yes
Wi-Fi – in-room (complimentary)	Yes	Yes	Yes	Yes
Safe - In-room	Yes	Yes	Yes	Yes
Spa treatments (at an additional charge)	Yes	Yes	Yes (In-room only)	Yes (In-room only)
Fitness	Gym & In-Room Equipment	In-Room Equipment	In-Room Equipment	In-Room Equipment
Boutique on site	Yes	Yes	Yes	Yes

BOTSWANA CAMPS

ACTIVITY	SELINDA EXPLORERS CAMP	OKAVANGO EXPLORERS CAMP	DUBA EXPLORERS CAMP
Camp Classification	Explorers Collection	Explorers Collection	Explorers Collection
Location	Selinda Reserve	Selinda Reserve	Duba Plains Concession
Size of concession / reserve	130 000 Hectares / 321 237 Acres	130 000 Hectares / 321 237 Acres	33 000 Hectares / 81 500 Acres
Number of Suites / Tents	3 Tents	6 Tents	5 Tents
Family Accommodation	1 Family Tent	n/a	n/a
Children can be accommodated from:	6 Years	6 Years	6 Years
Day and Night Safari Drives	Yes	Yes	Yes
Private Activities (at an additional charge)	Yes	n/a	Yes
Guided Walks	Yes	Yes	Yes
Boating (water level dependent)	n/a	n/a	Yes
Mekoro and/or Canoeing (water level dependent)	Canoeing	Canoeing	Mekoro
Fishing (Seasonal and water lever dependent)	Yes	Yes	Yes
Scenic Flights and Champagne Stops	Available at an additional charge	Available at an additional charge	Available at an additional charge
Main Swimming Pool / Private Plunge Pools	Main Swimming Pool	n/a	Main Swimming Pool
Shower	Indoor	Indoor	Indoor
Bath	n/a	n/a	n/a
Hairdryers (low-voltage)	n/a	n/a	n/a
Mosquito Nets	On All Tent Sides	Yes	Yes
Eco cooling system over bed	n/a	n/a	n/a
Fan	Yes	Yes	Yes
Wi-Fi – in-room (complimentary)	Yes	Yes	Yes
Safe - In-room	Yes	Yes	Yes
Spa treatments (at an additional charge)	n/a	n/a	n/a
Fitness	Yoga Mats	Yoga Mats	In-Room Equipment
Boutique on site	n/a	n/a	Yes