



Facts Valid until 31st December, 2023



LIKOMA ISLAND

Lake Malawi, Malawi



LIKOMA ISLAND



“Kaya is honestly the best place we have ever been on earth. We are still on a high from our trip. From kayaking out into the lake at sunset to the 5 food and service served on the beach every night, we couldn’t fault a thing.”*

- Claire, Trip Advisor Review

On the white sandy beaches of Likoma Island sits Kaya Mawa, a boutique lodge that welcomes honeymooners, families and friends for an indulgently carefree getaway.

Meaning ‘maybe tomorrow’ in Chichewa/Nyanja, the ethos of Kaya Mawa is in its name. Relaxed lakeside living is woven into the style, luxury and comfort of its Houses and Rooms. Dinner by starlight, massage therapy at our spa, and snorkeling in turquoise waters – it’s just another blissful day at Kaya.

Built by local hands and as Malawi’s first resort run solely on renewable-energy, Kaya Mawa is firmly grounded in sustainability, community empowerment and ethical trade.



AT A GLANCE

LOCATION Rated by Conde Nast Magazine as one of the planet's top ten most romantic destinations, Kaya Mawa is located on the south-western top of Likoma Island of Lake Malawi.

GPS 12°05'29.1"S 34°43'01.7"E

AIR ACCESS Likoma Island is accessible by charter flights with Nyasa Express from Lilongwe (duration approximately 1 hour) with a 25-minute road transfer from the airstrip to the lodge. Fast speed ferry options available with Likoma Passenger Services from Nkhata Bay and Ngala Beach Lodge to the island.

For the more adventurous traveller, there is also the local lake ferries from various locations along the lakeshore to Likoma Island.

Please contact our Sales and Reservations Department for options

VISA Visas can be obtained on arrival for Malawi if traveling from United Kingdom, USA, and most European passports. Rates for most countries are \$50. Please enquire with the nearest Consulate of Malawi or for further details visit: www.malawihighcom.org.uk

CURRENCY Malawi Kwacha (MKW). Cash and credit card facilities available. There are no ATMs on the island.

SEASONS

Autumn (March through May)
Highs range from 25°C with cooler temperatures at night. Some chance of rain.

Winter (June through August)
Comfortably cool weather with highs reaching 22°C. Least precipitation with no rain

Spring (September through November)
Highs are approximately 28°C. Least precipitation with no rain

Summer (December through February)
Highs can reach up to 32°C. This is the rainy season.

RAINS December to April.

MALARIA Please consult your doctor for recommended prophylactics, as Malawi is a malaria region. Kaya Mawa test regularly for Bilharzia and results have proven clear.

YELLOW FEVER Yellow fever certificates are only required for those that are arriving from countries with risk of yellow fever transmission and for travellers having transited for more than 12 hours through an airport of a country with risk of yellow fever transmission.



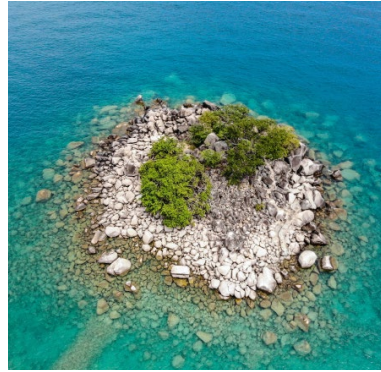
WHAT SETS US APART?

Kaya Mawa's barefoot luxury on an exclusive island in the middle of a fresh water lake is enough in itself to set Kaya Mawa on the top of your travel bucket list.

Each of our beautiful villas and rooms all have beachfront views and are uniquely built into the into its surrounds.

The activities on offer are perfect for those either looking for adventure or to simple escape from the world with a book.

The saying "the lake of stars" is no simple phrase, stargazing at night from your villa opens your eyes to a whole new world.



LODGE FACILITIES

ROOMS & MAIN AREA

4 x Standard rooms – Khuyu, Mbungu, Ngani & Msekwa.
2 x Family Houses – Ulissa & Yofu
 3 x Premium Rooms Nkhwazi, Mbamba, Makungulu
3 x Houses – Madimba House, Mainja House and the beautiful Ndomo Point House.

Main restaurant and bar area with deck on beach.

MAX GUESTS 37

CHILDREN All ages allowed.

POOL No Communal Pool.
 Rooms with private pools are Madimba, Mainja, Ngani, Nkhwazi, Mbamba

MOBILITY IMPAIRED ACCESS Kindly contact the Reservations Team for the full details of disabled and mobility access.

WI-FI Available in main office, bar and lounge area as well as the 3 premium rooms Nkhwazi, Mbamba and Makungulu.

CREDIT CARDS Only cash, Master Card and Visa Card are accepted. No payments with Amex Cards allowed.

PRIVATE DINNER Yes, various locations available.

FENCED No

SECURITY 24-Hour Security

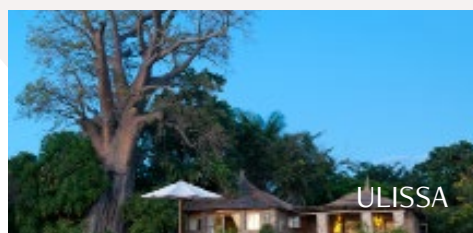
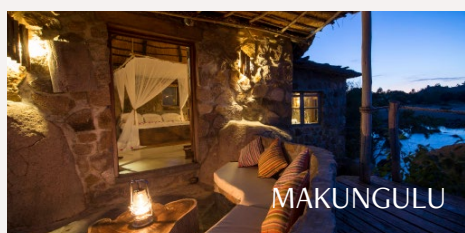
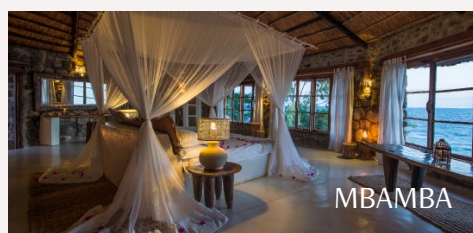
VEHICLES Transfer vehicle
 Electric Biking
 Speedboats



ROOM FACILITIES

EXTRA BEDS	<p>Msekwa, Madimba Ngani & Makungulu - king bed only</p> <p>Khuyu & Mbungu - king bed, can be converted to a twin</p> <p>Nkhwazi - king bed, can add 1 extra single bed</p> <p>Mbamba - Large double bed (can also add an extra single bed)</p> <p>Ulisa - (bedroom 1) king bed, can be converted to a twin; (bedroom 2) 2 singles or king and a swing single bed. 1 bathroom</p> <p>Yofu - (bedroom 1) king bed, can be converted to a twin; (bedroom 2) 2 singles or king. 1 bathroom</p> <p>Mainja - (bedroom 1) king bed only; (bedroom 2) 2 single beds, can be converted to a king. Can add extra single bed to 2nd bedroom. 2 bathrooms ensuite</p>
-------------------	---

FAN	In all rooms
SECURITY	24-Hour Security
AC/HEATER	No.
MOSQUITO NET	Yes, in all rooms.
BATH & SHOWER	Depending on the room chosen there is either an indoor bath or shower, some also have outdoor showers.
MINI BAR	Small bar fridge in all rooms, except Khuyu.
SAFE	Yes, in all rooms.
HAIRDRYER	On request due to power restrictions.
LAUNDRY	Complimentary.
POWER	Kaya Mawa is an eco-friendly lodge which is mostly supplied by solar. 220v with built in multi plugs are available in all rooms.



ACTIVITIES

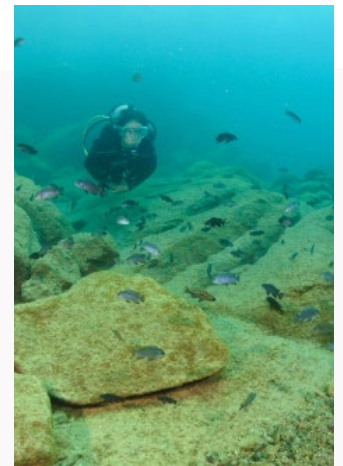
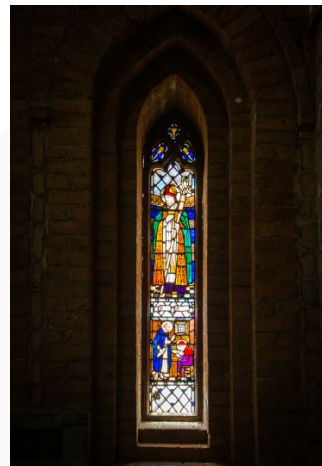
INCLUSIVE

- Snorkeling – Masks, snorkels and fins provided in your room, explore the lake.
- Kayaks and Paddle boarding – Dotted on the beach. Feel free to pull one onto the lake or the staff will give you a helping hand and go for a paddle. Life jackets advised.
- Visiting Katundu Workshop & St. Peter's Cathedral
- Topper Topaz and Topper Taz – for the experienced and novices. Please ask the management if you would like one set for a sail.
- Walking around the island – Island maps are available in the office. Feel free to ask the Management Team.
- Likoma is an extremely friendly island so please feel free to wander off and explore on foot. They say you are never lost on Likoma; someone will always point you the way home or take you themselves.

OTHER ACTIVITIES

- Water-ski, Wakeboarding and/or Ringo donut session.
- PADI Discover Scuba (Resort)/ refresher course
- Bubblemaker diving experience (aged 8-10)
- PADI Open water course (3-4 days)
- PADI Advanced course (2-3 days – only once qualified as open water)

*Resort/refresher course includes 2 hours of instruction followed by a dive. Can be done by Qualified and Unqualified Divers aged 10 and up. Feel free to enquire about any other PADI specialty courses.



AROUND THE ISLAND

Island maps are available in the office. Feel free to ask the Management Team.

Likoma is an extremely friendly island so please feel free to wander off and explore on foot. They say you are never lost on Likoma; someone will always point you the way home or take you themselves. For some other fun ways to see and enjoy this beautiful island we have listed a few trips we can organize for you.

MOTOR BOAT TRIPS

Motorboat trips around the island is a very relaxed way to see the highlight of this island such as St Peter's Cathedral and the Katundu textiles workshop. Make a day of it on the boat and take a picnic lunch and cool box of cold drinks.

- Malawian Slow Boat. Max 6 people.
- Small Speed Boat. Max 3 people.
- Large Speed Boat. Max 6 people.
- Fishing Trips in the slow trolling boat, rods and lures provided.
- Sunset Boat Trip (Starting around 5pm till sundown).

CAR RIDES

- Trip to town and the Cathedral by car. Max 8 people.
- Trip to town, Cathedral and Katundu workshop. Max 8 people.

E-BIKING

Looking for a bit of exercise but find Likoma's hills a tad too daunting? Try our brand new electronically assisted bicycles. The bicycle tour can take you all over the island, to the cathedral, the market, Katundu's workshop... you name it! This is a fun and eco-friendly way to explore our beautiful island.





Green Safaris was born out of a deep connection with Africa's untouched wild spaces and the wildlife and communities that call them home.

This passion drives our commitment to conservation, empowerment and sustainability in every aspect of Green Safaris. We see our properties in Zambia and Malawi as a means to that end, allowing us to offer an authentic experience for you and those you meet along the way. Each property supports at least one conservation or environment initiative and one community project.

DOING GOOD

LIKOMA CLEAN UP PROJECT

Green Safaris has initiated a project dedicated to reducing the amounts of (plastic) waste on the island. It seeks to reduce the use of plastic, provides a waste collection infrastructure, and invests in the education and awareness of the schoolchildren on the island on the relevance to keep Likoma clean.

LIKOMA REFORESTATION PROJECT

Green Safaris sponsors a re-forestation project on Likoma Island in Lake Malawi. Due to the continuous population growth on the island, more and more of its natural trees have been used to supply the demand for firewood. The project has secured land, seeds, and management to grow both large quantities of indigenous trees, as well as a dedicated section of fast-growing trees which could be used as firewood. The project is creating both new jobs and securing the islands natural trees

LIKOMA COMMUNITY GARDEN

Despite being surrounded by fresh water, only simple farming practices have existed on Likoma Island. There is little diversity of vegetables and external conditions provide immense challenges. Soil fertility is low, rains are limited to three months, and Likoma Islanders have difficulty accessing affordable land and finding startup capital to create a livelihood from farming. Green Safaris supports five women in Likoma to establish a community run garden 'Tiyanjane Garden' (meaning togetherness), supplying Kaya Mawa lodge and the surrounding villages with fresh produce through a greener supply chain.

GOING GREEN

Kaya Mawa is being designed to operate 100% on solar power with a new solar farm recently installed on the island. In addition, Green Safaris is investing in Electric quad bikes and will be introducing an eLandy just like its sister properties in Zambia.

For more information and welcomed contributions please contact us at conservation@greensafaris.com.



ENQUIRIES & OTHER USEFUL INFORMATION

www.greensafaris.com/kaya-mawa/

OWNER	Green Safaris
WEBSITE	www.greensafaris.com
RESERVATIONS	reservations2@greensafaris.com
TELEPHONE	+260979312766
MALAWI IMMIGRATION	www.immigration.gov.mw
MALAWI TOURISM	www.malawitourism.com

GREEN SAFARIS LODGE LOCATIONS ZAMBIA & MALAWI

