

INTERNATIONAL WEDDING

KARONGWE

P O R T F O L I O

2024



www.karongweportfolio.com



INTERNATIONAL WEDDING

Dear valued client

Karongwe Private Game Reserve, overlooking the majestic Drakensberg mountain range in the Limpopo Province, is set apart from similar properties by the extraordinary lengths we are willing to go to in order to ensure that your wedding with us is a memorable experience.

It is our people that create the magic of Karongwe and our dedicated and professional team are with us not simply because they want to work on one of the best natural game reserves in the world, they are here because they genuinely care about their work and their environment – elements which they carry out with passion.

Venue hire

- **Max 76 pax** R 53 900.00
- **Under 10 pax** (Elopement) R 24 200.00



Included for bridal couple:

- Welcome drinks on arrival
- A luxury suite for the bridal couple for the night of the wedding
- All meals, teas & coffee – as per package
- Game drives as per package
- 1 x Romantic turndown and a bottle of SA house wine

Ceremony – fig trees includes:

- Transfer of wedding guests and bridal couple to/from bush venue
- Fig trees setup
- Complimentary bottled water & ice tea for guests
- Directors chairs OR plastic chairs (No covers)
- 1 x Rectangular table with standard white tablecloth for signing the register
- Podium for marriage officer
- Hessian carpet runner
- Russet bush willow seeds in grass baskets (Confetti)
- 1 x Steel arch OR wooden arch
- 12 x Shepherd hooks only (Bridal couple to supply vases & flowers in to hang)
- Open safari vehicle with a "JUST MARRIED" sign



Ceremony – fig trees excludes:

(Request prices)

- Flowers
- Alcohol and/or soft drinks
- Canapes
- Chair covers for plastic chairs (if plastic chairs chosen)
- Tables & table cloths (for Snacks Canapés | Drinks)
- Tie backs for chairs
- Please refer to the checklist which is an addendum to the contract for additional exclusions

*** NOTE that there is NO Electricity at Fig Trees ***



Venue hire includes:

- Use of the venue for 8 hours
- 2 luxury rooms for the bridal couple to get ready in the day of the wedding
- Venue setup on the day of your wedding
- White linen napkins (excl. Napkin Rings)
- Standard lodge table cloths
- Rectangular tables (Seats 8-10)
- Wooden chairs/plastic chairs (No covers)
- Limited lanterns at entrance
- Standard cutlery and crockery
- Standard glassware (White & Red Wine, Water & Champagne)
- Easel, Gifts table and cake table
- Umbrellas on decks
- Fully equipped bar until 24h00, thereafter a flat fee of R2 400 per hour.
- Karongwe set-up team to assist with venue setup
- Beautiful bush area to take breath taking photographs
- Own undercover parking area and security guards that patrols the area

****NO LOUD MUSIC will be allowed AFTER 22h00** **NO MUSIC from/after 24h00****

Venue hire excludes:

- Other table cloths, Runners or overlays
- Chair covers
- Under-plates
- Table numbers, seating Plan, menus (Printing)
- Specific glassware (eg. Specific Champagne Flutes for Bridal Couple)
- Specific cutlery (eg. Specific Cake Lifter and Knife)
- Napkin rings
- Microphones, speakers and sound systems
- Décor
- Flowers

****Please see the Checklist as an Addendum to the Contract for any Additional Hiring options****



Site inspections & service providers:

- 1st Pre-wedding site inspection as per appendix 1, maximum 1 x room (2 x guests) to meet appointed lodge manager for a site inspection of lodge/s according to availability discussed.
- Accommodation, all meals and 2 x game drives included.
- Contract's terms and conditions will be explained and addressed via lodge manager
- Head office will email you the contract for signing
- "One Year" Anniversary suite at discounted rate
- List of service providers available from head office for DJ's, Hair/Make-up artists, Photographers, Wedding Cakes and Florist etc.
- Spa Treatments are available – Spa rates available on request, no spa treatments on day of wedding
- Fine Cuisine may be selected from our menus or discuss your meal requirements with our executive chef during your site inspection.
- Special dietary requirements are catered for.

Wedding Rates – 2024 (International Guests)

Annual Rate

Subject to Lodge availability

High Season

01 Jan - 30 Apr 2023
01 Aug - 31 Dec 2023

Low Season

01 May - 31 July 2023

High Season

01 Jan - 30 Apr 2024
01 Aug - 31 Dec 2024

Low Season

01 May - 31 July 2024

Lodge	Rooms	Rate	Rate	Rate	Rate
Shiduli Private Game Lodge					
Luxury Suite	30	R3 550	R2 930	R3 900	R3 220
Royal Suite	1	R4 330	R4 330	R4 760	R4 760
Kuname Lodge					
Luxury Suite	5	R5 550	R4 220	R6 100	R4 640
Premier Suite	1	R5 850	R5 250	R6 430	R5 770
Kuname Manor House (sleeps 6 min 4 pax to confirm the Manor House)	1	R5 850	R5 250	R6 430	R5 770
Chisomo Safari Camp	22	R3 810	R2 820	R4 190	R3 100
Becks Safari Lodge	11	R6 080	R5 710	R6 680	R6 280
Karongwe River Lodge					
Luxury Suite	5	R4 760	R3 010	R5 230	R3 310
Family Suite (Min 3 guest)	2	R4 760	R2 890	R5 230	R3 180
Executive Suite	2	R5 050	R4 430	R5 550	R4 870
Presidential Suite	2	R5 260	R4 660	R5 780	R5 120

Rates are quoted per person per night sharing and inclusive of 15% VAT

* Single supplement based on 40%

* Kuname Manor House - sleeps six people and is children friendly



General terms and conditions

Rate Includes

- All meals, teas, coffees and snacks.
- Accommodation.
- Dawn and dusk safaris in open Land Rovers as per Wedding Contract
- Drinks on dusk safaris are limited to one per person with a choice of local beer, wine or soft drink.
- All local house wines and beers are now included at Becks Safari Lodge only
- Wifi at all lodges.
- Any transfers from Southern boom gate are included.

Rate Excludes

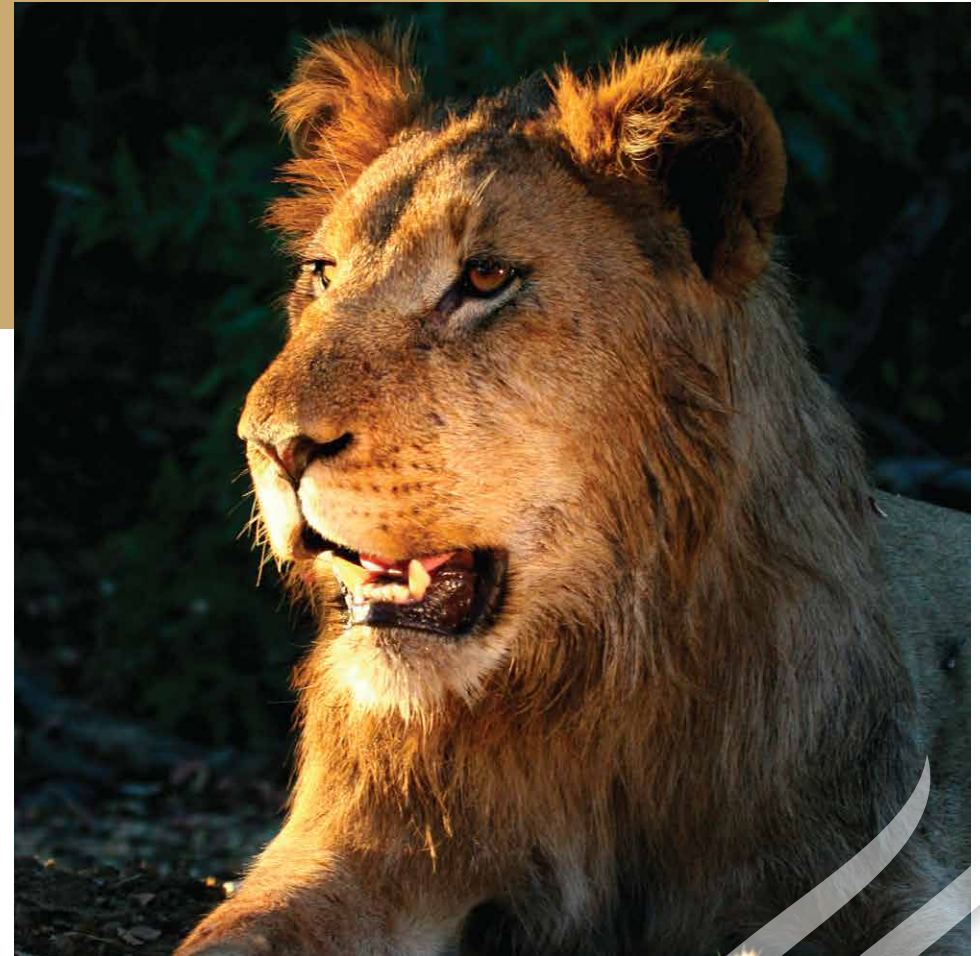
- All beverages, local, premium and imported brands.
- Tourism levy/Reserve entrance fee and Rhino Levy's charged at R210ppppn (2023) | R220ppppn (2024)
- Airport and road transfers, including chartered flights landing at Hoedspruit Civil Air Base.
- Mini Bar, curio, telephone, spa and laundry expenses.

General

- Single supplement of 40%.
- Children are welcome at Karongwe Portfolio excluding Kuname and Becks Safari Lodge and would not include any triple rooms requests.
- Children between 0 and 2 years old are accommodated on a complimentary basis.
- Children from the ages of 3 years to 11 years old are accommodated at 50% of the adult tariff, sharing a family room with adults.
- Children 12 years and older are considered adults and pay the applicable tariff.
- Service providers (Max 2 rooms) rates apply which do not include game drives R1750.00pppn.
- FOC policy – 16 guests or more 1 driver or guide free of charge.
- Children under 6 yrs are not permitted on any Game activity unless approved by the Lodge Management onsite, or prior approval by Directors is given. (Children are required to be accompanied by an adult on Game activity). Securing a private vehicle will not guarantee leniency on this policy.
- Bushwalks are an optional extra, and only arranged at the Lodge, subject to conditions. This activity is also available for limited duration and is subject to approval on the ground, it is also subject to game movement and Karongwe Lodges reserves the right not to offer based on the safety of our guests. There is an additional cost for this activity and may not be exchanged for a normal game activity.

Deposits

- No reservation is secure without a deposit.
- As per Wedding Contract



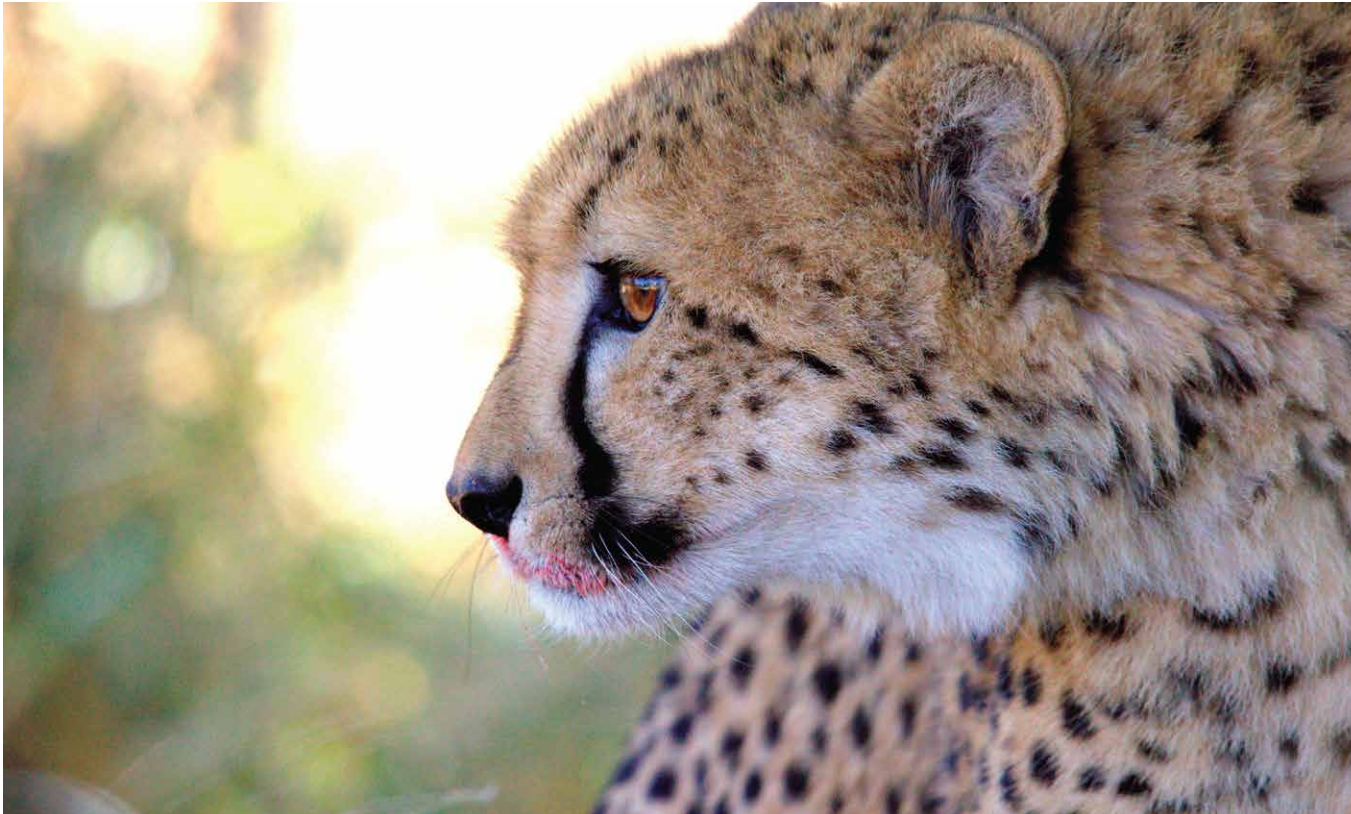
Payment Details

Credit card	Please advise card type, number, expiry date, and holders name and passport number.
Bank transfers	Shiduli and Kuname/ Chisomo/Karongwe River & Bush (Impulupudi Game Lodge Pty Ltd)
Bank	Standard Bank – Nigel
Branch code	12242
Account No	30291240

Payments to be made in South African Rand/ZAR, a copy of the remittance to be emailed to reservations@karongweportfolio.com and quote your reservation number.

Cancellation fees

- Karongwe Portfolio reserve the right to charge a cancellation fee equivalent to any direct costs incurred by it in attending to the reservation plus a 10% administration fee for any individual bookings cancelled more than 42 days prior to the date of the scheduled arrival.
- In the event of a cancellation, less than 42 days and more than 30 days prior to the date of the scheduled arrival, a cancellation fee in the sum equivalent to 25% of the full account will be incurred.
- In the event of a cancellation, less than 30 days prior to the date of the scheduled arrival, a cancellation fee in the sum equivalent to the full account will be charged (100%).
- As per Wedding Contract



COVID 19 Cancellation Policy

Valid until further notice and subject to Government Regulations

Please note that it is important that the guest/s MUST BE PREVENTED from travelling due to Covid, and then we will cancel reservation and waive any penalties as a result thereof if necessary.

- * **COVID-related travel conditions include:**
 - The Government in the guest's country of origin imposes a travel ban and guests are unable to travel
 - The Government in the guest's destination country (or transit country) imposes a travel ban and guests are unable to travel
 - The Government in the guest's country of origin OR destination country imposes a mandatory quarantine and guests are unable OR unwilling to travel
 - International flights are cancelled and guests are unable to travel
 - Guests are prevented from boarding a flight on account of health screening
 - Guests have contracted COVID-19 prior to arrival OR while in-country and are unable to travel
 - If the property in-country has to close due to COVID-19 reasons and is unable to fulfil their obligation for clients travel

For all other Cancellations, our standard cancellation terms and conditions apply. For conditions of postponing or re-instating of cancelled booking as a result of COVID 19, please contact Reservations Office directly.

GET IN TOUCH

Ojet in Touch



+27 (0) 11 817 5560



karongweportfolio.com



reservations@karongweportfolio.com