



## “Unique by Nature”

Vital to the Kafue, Mukambi exists to provide guests with unforgettable, diverse African experiences, as well as providing the local community with a sustainable and harmonious future.



# Introducing Mukambi Safaris...

- Mukambi Safaris is a Dutch family run company in Zambia with three camps;
  - Mukambi Safari Lodge
  - Busanga Plains Camp
  - Fig Tree Bush Camp
- Situated in the Kafue National Park, one of the largest unspoiled wilderness areas in the world.





# Kafue National Park

- A unique and diverse area, the size of wales or the state of Massachusetts, USA!
- As well as the breeding herds of elephant there are several prides of lion, cheetah and leopard. Packs of the endangered wild dog regularly pay a visit.
- Other animals that you are likely to encounter are buffalo, zebra, hippo and various antelope species like impala, puku, sable, hartebeest, bushbuck, roan and waterbuck.
- The diversity of habitat makes Kafue National Park one of the best locations in Africa for birding with nearly 500 species on the list.







UNIQUE BY NATURE

**MUKAMBI**

SAFARIS



# Chalet & Family Chalet

- Eight comfortable en-suite chalets (rondavel type) for 2 persons of which one a family unit (4 persons) with en-suite bathroom, 24hrs electricity and hot water.
- Chalets come with either one queen size bed or two single beds. All beds made up with cotton sheets, duvet (extra blankets available) and mosquito nets.
- The family chalet has two bedrooms, one with a queen bed and one with two single beds, a lounge for relaxation, 24hrs electricity and hot water. Bathroom comes with shower, toilet, basin and mirror.
- All chalets are facing the Kafue River with garden and bush in front up to the river's edge.





# Riverside Villa

- One of the most special ways to experience a safari is with the family, making memories and having an incredible time together whilst enjoying ...
- Our luxury family Riverside Villa has two large bedrooms (one with a queen-sized bed and the other with two single beds), both rooms en-suite with a shower, toilet and basin.
- All beds made up with cotton sheets, duvet (extra blankets available) and mosquito nets. The Villa has a fully furnished living room, an extensive wooden deck overlooking the Kafue River, 24hrs electricity and hot water.
- This accommodation is right on the banks of the river and ideal for families.





# Luxury Safari Tents

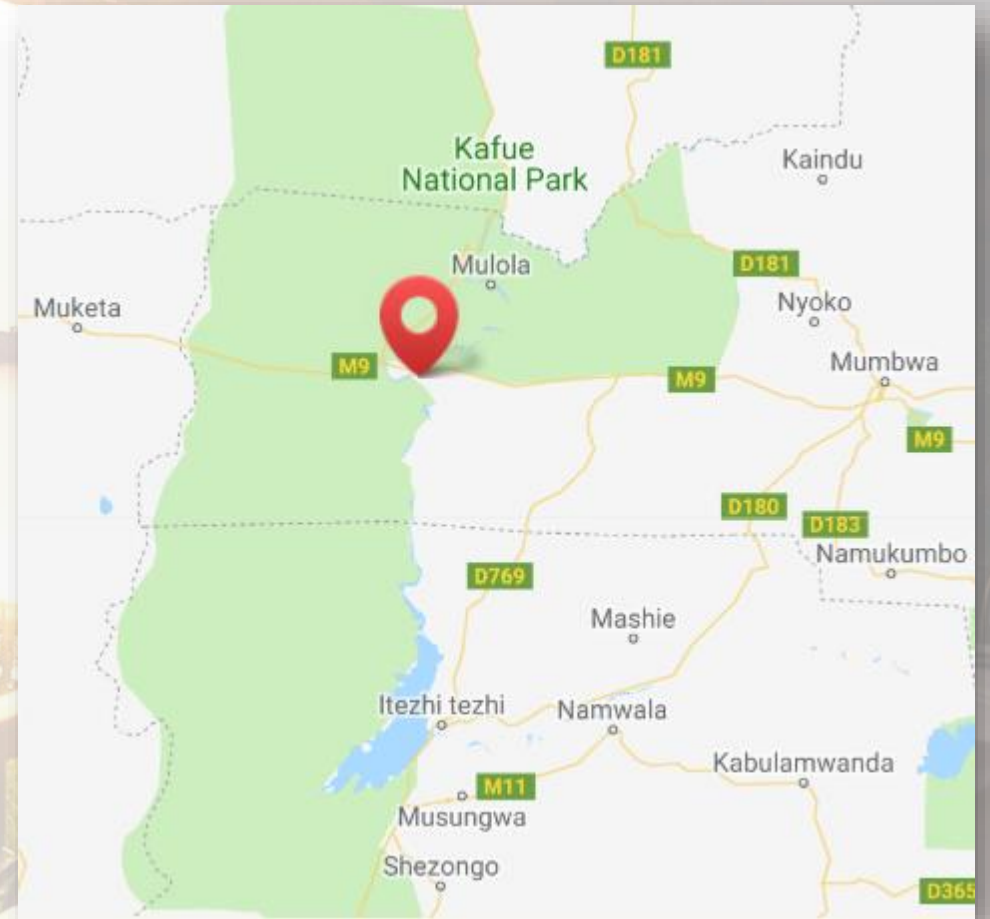
- Four luxury tents (2 persons) that have a private deck with comfy seating overlooking the Kafue River and each unit privately surrounded by natural riverine bush.
- Romantic mosquito nets surround luxurious box spring beds which are standard made up as king beds but can be made up as twins on request.
- A freestanding ball and claw bathtub is found on each deck. The tents have an open bathroom with shower, toilet and washbasin. The furniture is made of recycled wood from Dhows that used to sail the Indian Ocean.
- Sliding glass doors provide spectacular views and light into the tents.





# Location & Access

- We are located 3-4 hours drive from Lusaka
- Mukambi main lodge enjoys year-round access using the M9 road through the park
- We are 2kms from the tarmac road and accessible using any road vehicle
- Chunga airstrip is across the river and can be reached within the hour using our boats and game viewers





# Activities

- Activities, on which you are likely to see elephant, lion, leopard, cheetah, and hippo besides an incredible variety of birds, consist of;
  - game drives
  - sunset boat cruises
  - fishing trips
  - walking safaris
- We also offer a tour of our local community and school





# Game Drives

- The game drive offers the greatest opportunity for spotting game as a large area is covered. At Mukambi we start the game drive by crossing the Kafue River by boat; leaving from the other side of the river in an area where other game drive vehicles are seldom seen.
- The game drives are in the early morning or later afternoon/evening when animals are most active.
- The Kafue has all the big African cats as well as the smallest. But with our experienced and highly qualified guides you will experience much more.
- They will tell you about the eco system with all her flora and fauna.
- A game drive with an experienced guide is much more than just looking for big animals. Birds are fascinating as well and our guides will show you birds that it's likely you have never seen before.





# Walking Safari

- The walking safaris last a few hours and are more of an educational activity.
- Large game can be sighted and the guests are also taught about the plant and insect life at their feet.
- Our experienced trackers give detailed descriptions of what the animals have been up to and how best to go about finding them.
- Guests are completely safe as the walking safaris are conducted by our well trained guides.





# Sunset Boat Cruise

- The boat cruise is more of a relaxing activity which allows guests to put their feet up and enjoy the scenery.
- Guests can view the vastness of the mighty Kafue and acknowledge the unique eco system which our guides are always more than willing to educate guests about. What impresses most guests is that no other boats are seen.
- You can experience the Kafue River without any disturbance of mass tourism.
- Sightings are always different, but hippos, crocodiles, different antelopes and sometimes elephant (drinking or crossing the river) are common sightings.
- The Kafue River also has some of Africa's largest Nile crocodiles which can all be seen from the safety of our pontoon. Birdwatchers will be in their element with common sightings like the African Finfoot and other rare birds. Common sightings include; jacana, wattled crane, open and saddle billed stork and a variety of king fisher.





# Fishing on the Kafue River

- The Kafue River itself has spectacular riverine forests on its banks and flows throughout the year, changing from a wide, slow flowing river to stretches broken up by islands with fast flowing water.
- The river attracts a wide variety of animals and birds and is filled with hippos and crocodiles of all sizes.
- Boat cruises and fishing trips are a must for guests visiting the river. Most safari lodges and camps within the Kafue National Park are based on the Kafue River.
- Some of the most common fish caught include bream, Kafue bream, silver barbel and Kafue pike.





# Tour of Local Community

- Mukambi Community School provides education to those living in an area where no good schools exist.
- Results are spectacular; the school now provides 80 local children with a high standard of education, and five teachers have permanent employment.





# Fig Tree Bush Camp





# Fig Tree Bush Camp

- New remote luxury bush camp in an undiscovered part of Kafue National Park.
- It is named after the giant fig tree next to the boma (central area) overlooking a unique sandy lagoon.
- This lagoon maintains its alluring water throughout the season attracting an array of wildlife including: elephant, puku, impala, warthog, zebra, and hartebeest.
- Predators like lion, cheetah, leopard and hyena are regular visitors and the wild dog have been known to prey on the concentration of game.
- Relax and enjoy a refreshing dip in our pool or sunbathe on the wooden deck whilst overlooking the surrounding plains and the waterhole in front.
- Guests will come together underneath the Fig Tree to savour the serenity of the lagoon as well as delicious food and wine.





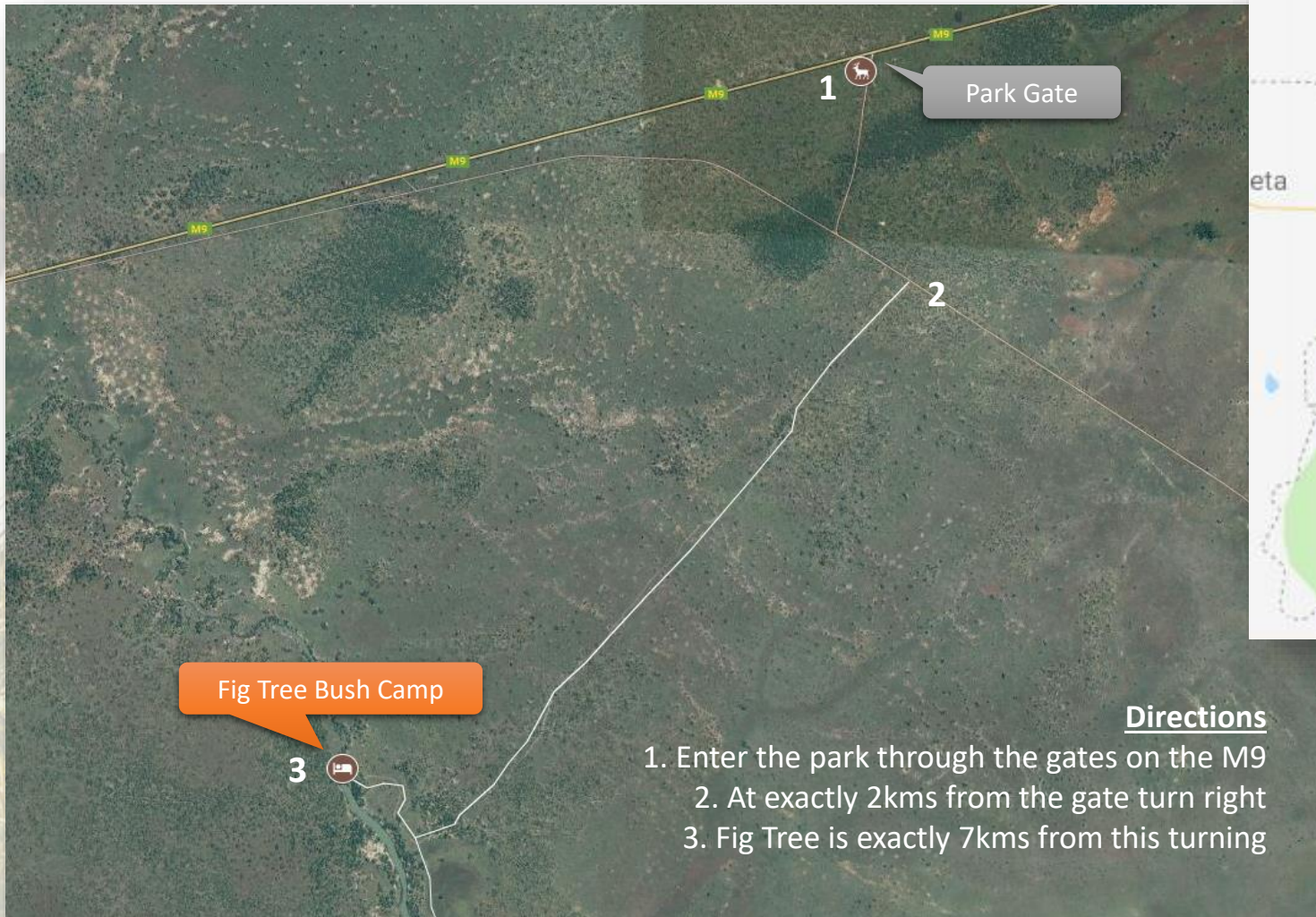
# Accommodation at Fig Tree Bush Camp



The camp has 4 en-suite luxury safari tents (2 twin and 2 double) on 3-meter-high platforms above the ground, giving a spectacular view over the lagoon. Each safari tent has an en-suite bathroom and veranda presenting a unique view from the tree canopy.



# Location & Access



## Directions

1. Enter the park through the gates on the M9
2. At exactly 2kms from the gate turn right
3. Fig Tree is exactly 7kms from this turning







Busanga Plains Camp



# Busanga Plains

- The Busanga Plain is 720km<sup>2</sup> of palm groves, papyrus-choked reed beds and lily-covered lagoons representing one of the few wetland wildernesses in the world
- The area consists of an extensive floodplain that falls dry after the rainy season, attracting huge numbers of game and stunning birdlife.
- 'One Fig', a huge fig tree in the middle of the plains, is a famous landmark.
- The well known documentary, '*Swamp Lions*', often broadcasted on National Geographic, was filmed exclusively on the Busanga Plains.
- It is no surprise that Getaway magazine mentioned Busanga as one of the 'top 10 secret gems of Africa'.





# Busanga Plains Camp

- The raised boma (communal area), with open campfire and dining area, is rustic, informal and overlooks the openness of the plains, only interrupted by tree studded islands where fig trees and wild date palms draw their nutrients from the remains of giant anthills.
- Relax and enjoy a refreshing dip in our pool or sunbathe on the wooden deck whilst overlooking the surrounding wetlands.
- A wooden viewing platform on stilts tucked away high up in the characteristic fig tree above the boma offers a breath-taking view directly onto the floodplain.





# Busanga Accommodation

- Our Busanga Plains Camp, in the middle of the flood plain, offers an intimate experience with accommodation consisting of four luxury safari tents (2 twin and 2 double) with en-suite open air bathrooms and flushing toilets, each one overlooking the Busanga Plains.
- The tents are light, airy and spacious with large beds draped with mosquito nets.
- Experience the total peace of nature from your private veranda. Enjoy the glow of lantern lights on canvas walls and drift off to sleep to the sounds of the African night.





# Location & Access

- Take an all day game drive through the park from our main lodge to transfer to the camp with a bush lunch on route
- Alternatively camp is situated just one hour's drive from the new Busanga airstrip
- A raised boardwalk over the water takes guests from our vehicle park to the camp itself

