



OVERVIEW

bloomestate is a 6.5-acre haven with all the conveniences one may need. It balances a crisp, clean decor and contemporary architecture with wide open and natural spaces. Each of our **seven garden rooms** has a spacious bathroom, walk-in shower, bath, a private terrace and calming garden views.

A deck by the dam, a secluded Jacuzzi with a saltwater pool, strategically-placed hammocks, a pampering day spa...Every element of your guesthouse has been crafted to create a soothing and natural experience.

Nestled in the foothills of the Langeberg mountains on the fringe of the historic town of Swellendam in the Western Cape, **bloomestate** is your perfect home base from which you can experience the region's highlights: whale-watching on the Indian Ocean, wine-tasting in the estates of Robertson Wine Valley, wandering the trails of the Langeberg mountain range, communing with the wildlife of the Nature Reserves of Marloth, De Hoop or the Bontebok National Park.

SUSTAINABLE ENERGY

To help sustain both the estate and the surrounding natural beauty of our region, we strive to use as many locally-made or Fair Trade products as possible. We serve local fruits and organic vegetables, make jams from the many different fruit trees growing on our estate, use energy-efficient lighting and bio-degradable cleaning products including our soaps. The hot water is solar-heated and waste is composted.

CALVIN AND CHERE

The owners and hosts Calvin and Chéré du Plessis, along with their friendly staff, will always ensure distinct, personal and professional service. With a passion for the hospitality industry and many years of combined experience working within unique upmarket lodges in the North and

Bloomestate Pty Ltd
276 Voortrek Street Swellendam 6740
South Africa
Tel: +27 28 514 2984
Email: info@bloomestate.com
www.bloomestate.com



bloomestate Swellendam

South of South Africa, Calvin and Chéré made their dream come true with **bloomestate**. Now together with their little son, Donovan, they want to share it with you.

ROOM TYPES

Luxury garden rooms

Bright and spacious, the luxury garden rooms have French doors opening on to a private patio and unobstructed views over the garden and surrounding mountains. The extra-length beds feature alpaca throws and high-quality percale linen. Stroll across to the en-suite bathroom where you will encounter the large walk-in shower and a separate bath with locally made bath salts.

No. of Rooms: 6

Beds: 3 King-size beds, 3 Twins-size beds

Amenities:

Bath	Air conditioner
Free Wi-Fi	Hairdryer
TV-DSTV	Minibar
Walk-in shower	Heating
Gowns	XL beds
DVD Library	Free coffee and tea
Heated towel rail	Personal safe
Slippers	Percale linen
iPod docking	Design sitting area
Underfloor heating	Writing desk
Karoo lavender amenities	

Red Cloud room

Of the Classical Elements, the Red Cloud Room mostly represents fire; dreamy yet passionate. It's the perfect suite for that sweet and special occasion. The bed, bathroom and sitting area are all king-size allowing for additional space with a few extra amenities to enhance your experience.

No. of rooms: 1

Beds: King-size

Amenities:

XL bathroom	Karoo lavender amenities
Free Wi-Fi	iPod-phone dock
Flat screen TV	Hairdryer
Walk-in shower	Minibar
Gowns	Air conditioner
DSTV	Heated towel rail
Double basins	Nespresso machine with coffee pods
Slippers	Heating
DVD library	XL bed
Underfloor heating	Personal safe
	Design sitting area
	Percale linen



ACTIVITIES

As the third oldest town in South Africa, Swellendam is steeped in a rich history. There are various different museums to explore including art galleries and exhibitions. Situated at the base of the Langeberg Mountains there are numerous different hikes and mountain bike routes with the spectacular Marloth nature reserve being a favourite or why not try the famous Bontebok national park which is a short drive of about 2 km's to get to. One can take a scenic drive from Swellendam to the the world renowned De Hoop Nature Reserve which is perfect for a packed picnic lunch which we will gladly assist with. Our local 9-hole golf course is also very popular.

The Bonnievale and Robertson wine valley starts just 20 mins from **bloomestate** where one can find over 50 famous wine farms.

After a scrumptious breakfast at **bloomestate**, one can try out the many great restaurants that Swellendam has to offer or ask us for a traditional South African meal that we can arrange for you.

FACILITIES

5 different buildings on a 6.5 acres estate:

- Main house with breakfast rooms and reception
- Lounge building with covered terrace, separate 'honesty bar' and treatment room
- Two buildings with the luxury garden rooms and The Red Cloud room

Property facilities

- saltwater swimming pool with wooden deck, lounge chairs, pool towels and daybed
- covered outdoor Jacuzzi in the woods
- deck at the small dam ("ven")
- citrus orchard with 150 trees
- sitting area at terrace
- water features on the premises
- abundant bird life
- indigenous trees and shrubs
- safe under covered parking

Bonus services

- free Wi-Fi in the rooms and all other buildings
- in-house wellness and beauty treatments
- Picnics, lunches and dinners on request
- 24/7 reception
- travel desk for arranging itineraries
- laundry and ironing



bloomestate
Swellendam

LOCATION

bloomestate is ideally situated halfway between Cape Town and the Garden route.

GPS co-ordinates 34.0374° S, 20.4262° E

Driving directions from Cape Town

Take the N2 from Cape Town City towards Cape Town International Airport.

Drive for 215 km past Caledon and Riviersonderend.

Turn left onto the R60 (Swellendam West). Drive 800 m. Turn right into Voortrek Street.

bloomestate is the first building on your right.

Driving directions from George

Take the N2 from George. Drive for 201 km past Heidelberg.

Take the third exit onto the R60 (Swellendam West).

Drive 800 m and turn right into Voortrek Street.

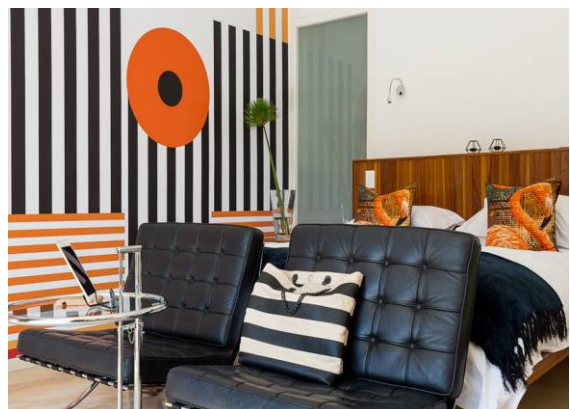
bloomestate is the first building on your right.

CONTACT DETAILS

Calvin and Cheré du Plessis

276 Voortrek Street
PO Box 672
Swellendam
6740

telephone: +27 (0) 28-514 2984
mobile phone: +27 (0)79 515 8219
info@bloomestate.com
www.bloomestate.com



Bloomestate Pty Ltd
276 Voortrek Street Swellendam 6740
South Africa
Tel: +27 28 514 2984
Email: info@bloomestate.com
www.bloomestate.com