



ETOSHA NATIONAL PARK

The Mushara Outpost is situated just 10 km from the Von Lindequist Gate of the world famous Etosha National Park. Mushara Outpost accommodates 16 guests in custom-made tent-like wood and canvas structures which are nestled on the banks of an ancient dry riverbed, known as "omuramba" in the Herero language. Mushara Outpost is all about old-fashioned hospitality with warm, friendly and personalized service on the doorstep to the wonders of Etosha National Park. The lodge's main house is styled like an old farm house with high walls, corrugated iron roof and a large wrap-around veranda facing northeast to take advantage of shade. The ambiance is similar to that of a well lived-in house: friendly and extremely comfortable with a light feel to it.

Der Mushara Outpost ist ein jüngerer Mitglied der Mushara Collection exquisiter Unterkünfte, nur 10 km vom Von-Lindequist-Tor zum weltberühmten Etosha Nationalpark entfernt. Insgesamt 16 Gäste können in den maßgefertigten Luxus-Zelten aus Segeltuch und Holz untergebracht werden, die sich an einem uralten Trockenflusslauf befinden – "omuramba" in der Sprache der Herero. Beim Mushara Outpost dreht sich alles um großzügige Gastlichkeit im Stile vergangener Zeiten, geprägt von Wärme, Freundlichkeit und persönlichem Service vor den Toren des wundervollen Etosha Nationalparks. Das Hauptgebäude der Lodge ist im Farmhaus-Stil gehalten: hohe Räume, Wellblechdach und eine breite Veranda an der schattigen Nordost-Seite. Die Atmosphäre ist wie in einem gern bewohnten Haus freundlich, äußerst gemütlich und von einem Hauch Leichtigkeit umgeben.

Mushara OUTPOST

NTB Reg # TNL00017

Location: Co-ordinates: Outpost S 18 48 914 - E 017 08 191

- Distance from Windhoek 500 km • Distance from Tsumeb 100km
- Distance from Etosha National Park 10 km

Mushara Airstrip: S 18 49 40 - E 017 08 68 • 1400 m 08/26

Accommodation: • Number of guest tents 8 • Number of guide tents 2 • Not wheel-chair friendly

Child Policy: • Children 12 years and older are welcome • Normal rates apply

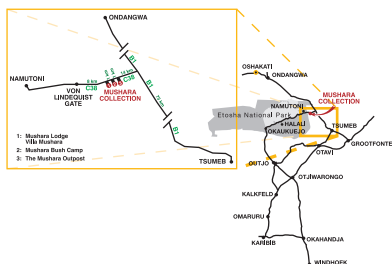
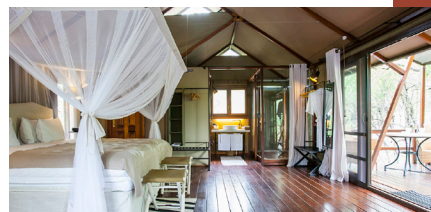
All tents have: • Private terrace • Twin bed • Mini Bar • Air Conditioning • Mosquito net • Hair drier
• Coffee/Tea station • Telephone • En suite facilities / shower • 24 hour electricity • Safe

Facilities & Services: • Main building has lounge • well stocked book shelves • reception
• fire place for the winter months • WIFI (slow and unreliable connection) • Meals can be enjoyed outside or inside
• Swimming pool • bird bath with hide • Outside open fire place

Activities: • Guided game drives into the Etosha National Park

Important information:

- Credit cards: VISA and Master Card only
- Power Supply: 220 V 24 hours on national power grid
- Medical support: Tsumeb Private Hospital
- Cell phone reception: No



Reservations:

Tel: +264 61 241880 • e-mail: reservations@mushara-lodge.com

Contact at lodge:

Tel: +264 67 229106 • P.O. Box 1814, Tsumeb, Namibia