



THE ROYAL PORTFOLIO

# THE SILO

*Cape Town*



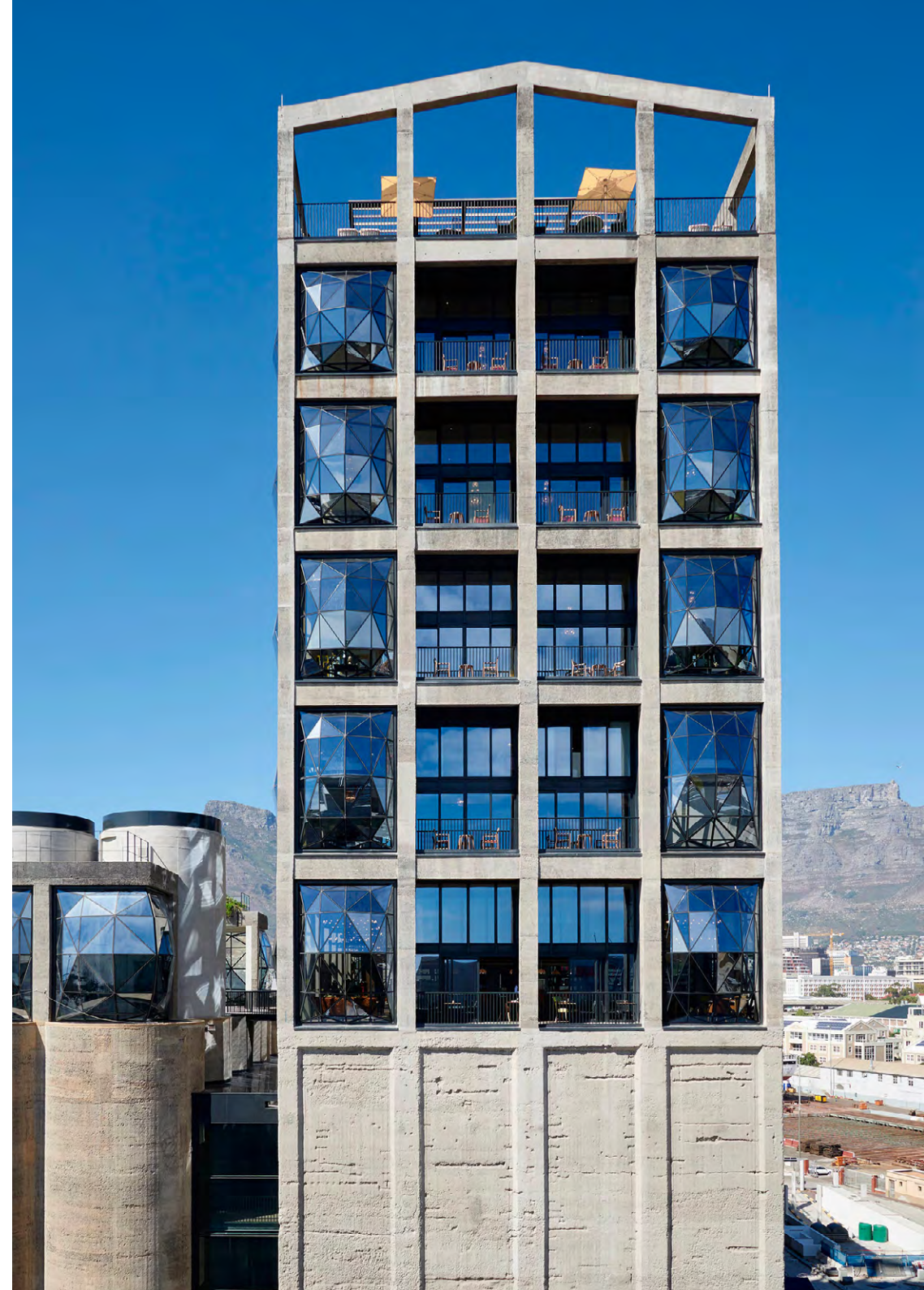
FACT SHEET





THE SILO HOTEL IS A MAGICAL  
SPACE TOWERING ABOVE  
THE V&A WATERFRONT  
SURROUNDED BY THE  
NATURAL WONDER OF SOUTH  
AFRICA'S MOTHER CITY.

The Silo Hotel is located in the grain elevator portion of the historic grain silo complex occupying six floors above Zeitz Museum Of Contemporary Art Africa (MOCAA). The Silo is located in the heart of Cape Town's V&A Waterfront with 360° views from Table Mountain to Robben Island.





## HEATHERWICK STUDIO

The exterior of the grain silo building was designed by Thomas Heatherwick, Founder and Principal of the London-based Heatherwick Studio. Heatherwick Studio was tasked with the transformation of the elevator house and the adjacent storage annex of 6 rows of 7 silos.

From the outside, the greatest visible change to the building's original structure is the addition of the geometric windows - each of the 82 windows in the hotel has 56 individual panels of glass. By night, the building glows like a beacon in the harbour.



## ZEITZ MOCAA

Zeitz MOCAA is a contemporary art museum similar to the likes of the Tate Modern in London, MoMA in New York and Museo Nacional del Prado in Madrid. Zeitz MOCAA is a not-for-profit partnership between the V&A Waterfront and Jochen Zeitz, whose collection forms the museum's founding collection.

*Image courtesy of Cyrus Kabiru.*





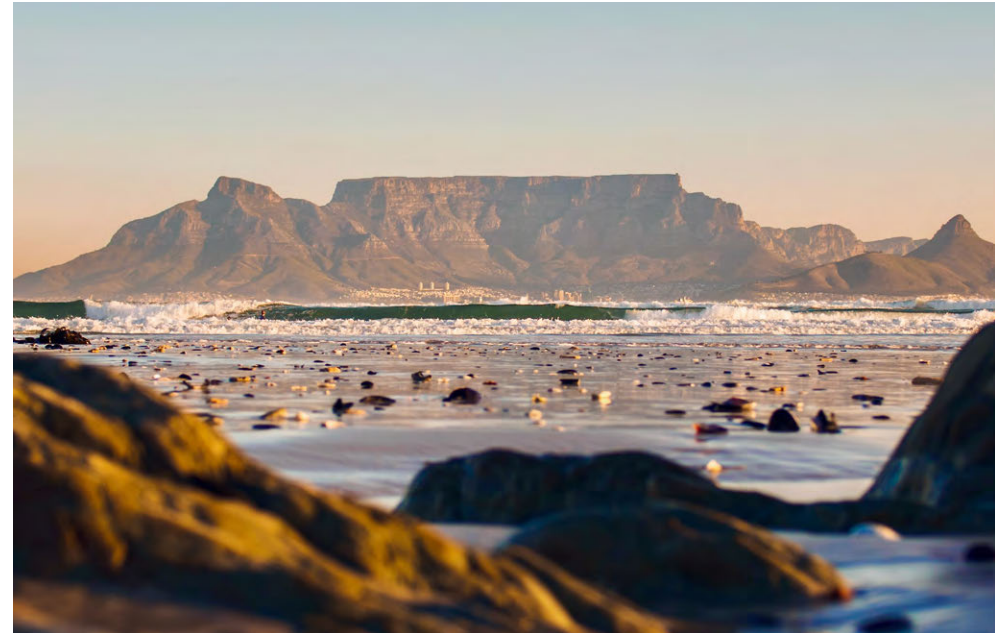
THE PENTHOUSE



# CAPE TOWN

Cape Town is consistently ranked among the Top 10 cities in the world to visit by the likes of Condé Nast Traveler and Travel+Leisure magazine. The 'Mother City', as it is affectionately known, is a colourful and vibrant city surrounded by dramatic mountains and sandy beaches. The magic of Cape Town lies in the collision of natural wonder, diverse cultures, art, design and a thriving food and wine scene.

The Silo Hotel is located in Cape Town's V&A Waterfront and is the ideal base from which to explore all that the city has to offer. At the hotel itself, guests can relax at the spa, take afternoon tea overlooking Table Mountain, quaff champagne, swim in the rooftop pool, work off the city's fine dining in the gym or enjoy a guided tour of the hotel's private art collection containing over 300 pieces of contemporary African art.



## TOP ATTRACTIONS

- Table Mountain
- Kirstenbosch Botanical Gardens
- Lion's Head
- Helicopter Tour
- Penguins at Boulders Beach
- Chapman's Peak Drive
- Robben Island
- The V&A Waterfront
- Cape Point
- Wine Tasting



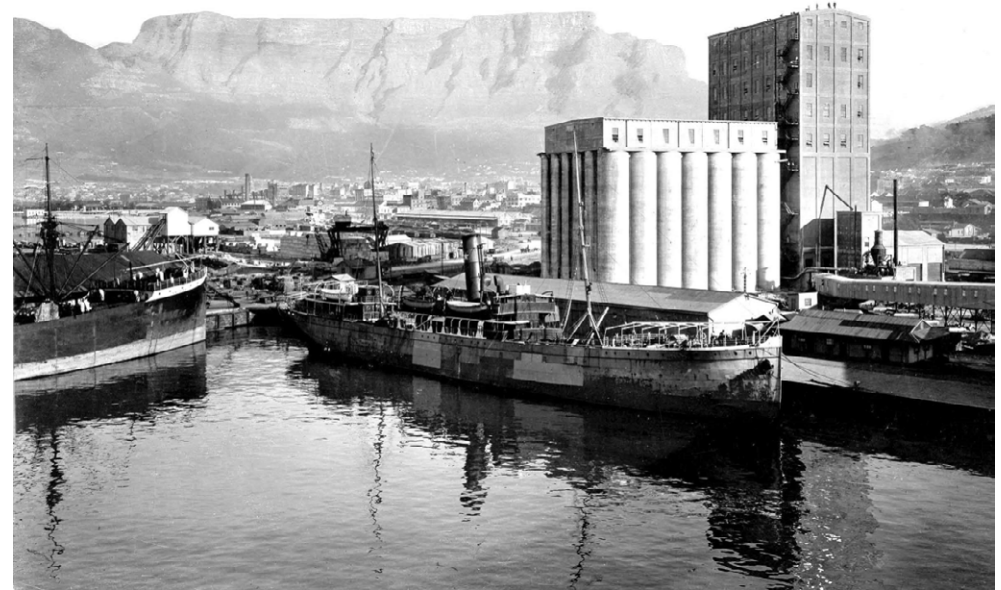


# HISTORY

The grain silo complex was the tallest building in Sub-Saharan Africa at 57m when it was opened in August 1924 after 3 years of construction. It closed in August 2001 after nearly 80 years at the heart of South Africa's industrial and agricultural development. The grain silo played an integral role in terms of international trade as an export facility, but it also provided vital infrastructure to South Africa's regional agricultural economies supporting local farming communities while also making a major contribution to the economic activities of Table Bay harbour.

The building has two parts - the elevator tower, where The Silo Hotel is located, which facilitated the mechanical bulk handling of grain, and the actual storage silos themselves. The elevator tower was known as the working house and it served numerous functions. It received grain from the track shed, lifted it to the top of the building by the use of elevators and provided facilities for the grain to be weighed, cleaned, bagged, stored and distributed.

Grain from the smaller, inland 'country elevators' around South Africa was delivered to Cape Town. The first load of maize was received into the grain elevator in Cape Town on the 8 September 1924, and this was followed two months later by the first export from the new elevator - 6,245 tons of maize aboard the SS Willaston destined for Europe, on the 12<sup>th</sup> November 1924. The last export shipment from the grain elevator was on board the M/V Anangel Wisdom in 1995 and operations ceased in 2001.





# A CROSS-SECTION OF THE ENTIRE GRAIN SILO BUILDING, WHICH IS COMPRISED OF ZEITZ MOCCA AND THE SILO HOTEL





# ACCOMMODATION



A DELUXE SUPERIOR SUITE



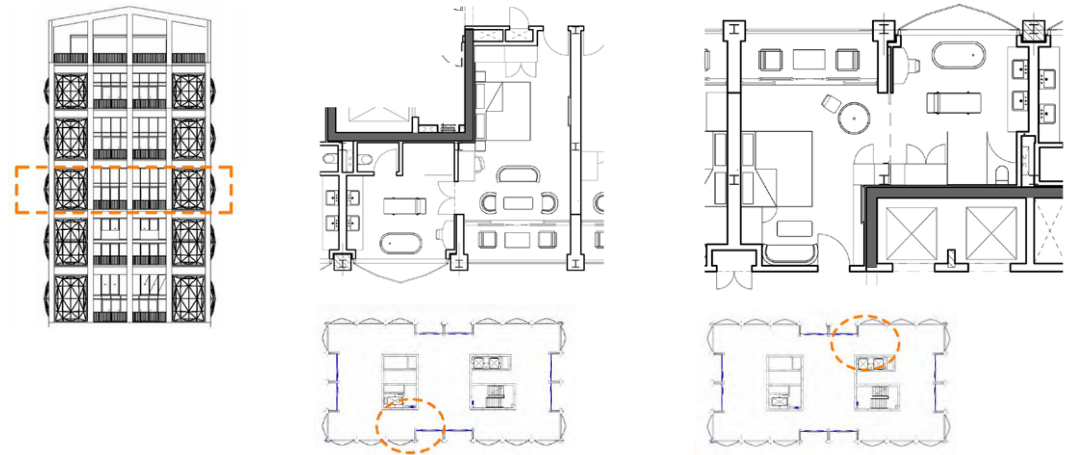
# ROOM CATEGORIES

The 6 room categories are based on the room size and the views. The rooms are more spacious vertically than horizontally due to the unique architecture of The Silo and in particular the ingenious design of the pillowed window bays which are one of the key architectural features.

## *The Silo Rooms*

There are 8 Silo Rooms with spectacular harbour or mountain views. Each of these rooms feature a collection of contemporary African art, plus a private balcony and a large en suite bathroom.

- Sleeps 2
- 44m<sup>2</sup> | 474ft<sup>2</sup>
- Ceiling to floor windows
- View of the Harbour and Table Bay, or Lion's Head

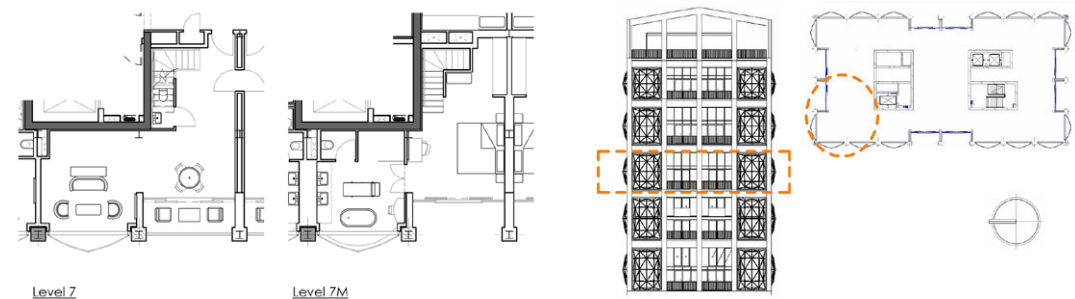


## *Duplex Suites*

There are 6 Duplex Suites across the 6th and 7th floors with either mountain or harbour views. These suites vary between 76m<sup>2</sup> and 88m<sup>2</sup> including a small balcony and each has the bedroom on a mezzanine level.

- Sleeps 2\*
- 76m<sup>2</sup> - 88m<sup>2</sup> | 818ft<sup>2</sup> - 947ft<sup>2</sup>
- Mezzanine level
- View of the Harbour and Table Bay, or Lion's Head

\* Option to connect with an adjoining Duplex Suite

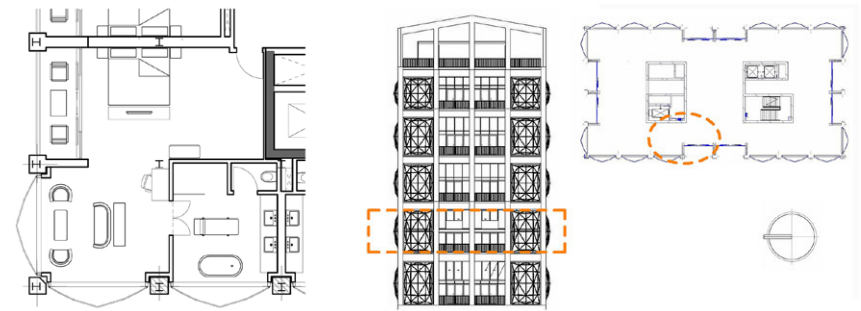




## *Deluxe Superior Suites*

There are 7 Deluxe Superior Suites across the 8th, 9th and 10th floors with spectacular 5.5m high pillowed glass windows showcasing the natural wonder of Cape Town. They range in size from 60m<sup>2</sup> to 67m<sup>2</sup> including a balcony.

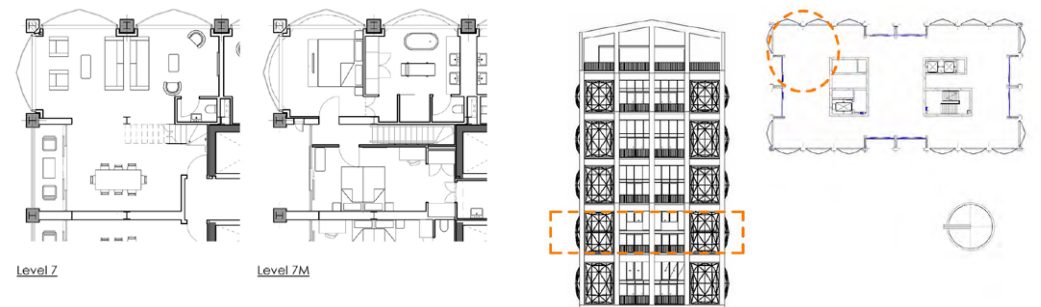
- Sleeps 2
- 67m<sup>2</sup> | 721ft<sup>2</sup>
- Ceiling to floor windows
- View of Table Mountain or Ocean and Robben Island



## *Family Duplex Suites*

There are 4 Family Suites on the 7th floor with views over the old harbour and out to the distant mountains or over the V&A Waterfront and Signal Hill. Family Suites range from 111m<sup>2</sup> to 128m<sup>2</sup> including a balcony and each has a mezzanine level with 2 bedrooms.

- Sleeps 4
- 128m<sup>2</sup> | 1,378ft<sup>2</sup>
- Mezzanine level
- View of Table Mountain or Ocean and Robben Island

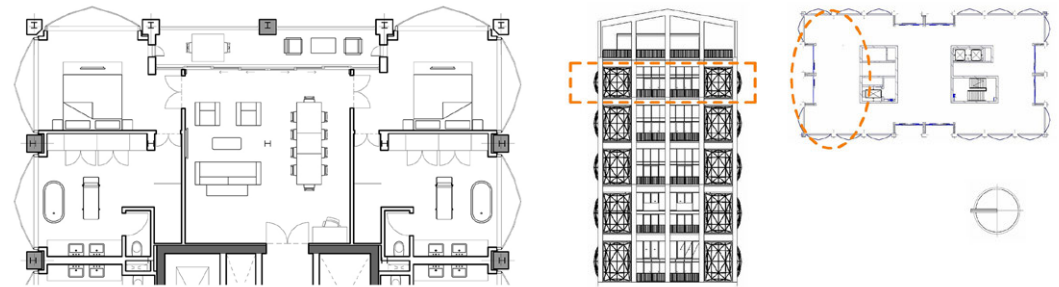




## Royal Suites

There are 2, triple aspect Royal Suites facing the Atlantic Ocean, Robben Island and the distant mountains. Each Royal Suite is 132m<sup>2</sup> and each has 2 bedrooms and a generous balcony.

- Sleeps 4
- 132m<sup>2</sup> | 1,421ft<sup>2</sup>
- Ceiling to floor windows
- View of Ocean and Robben Island

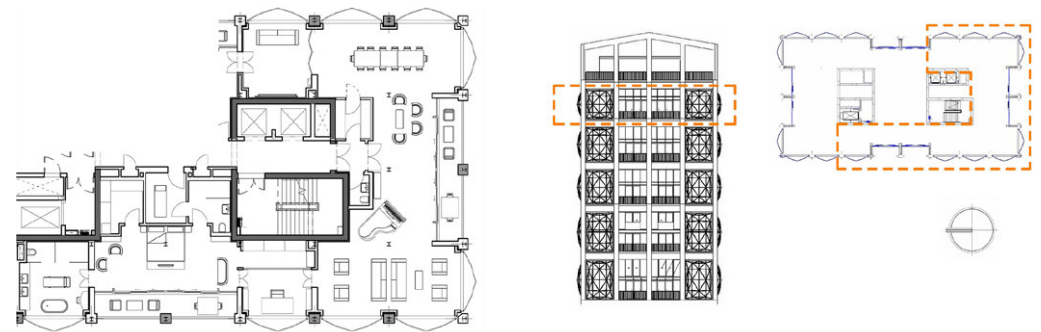


## The Penthouse

The 211m<sup>2</sup> (2,271ft<sup>2</sup>), one-bedroom penthouse is the jewel in The Royal Portfolio's crown located on the top floor of The Silo facing Table Mountain with triple aspect views of Cape Town and a 24m<sup>2</sup> balcony.

- Sleeps 2 or 4\*\*
- 211m<sup>2</sup> | 2,271ft<sup>2</sup>
- Ceiling to floor windows
- View of Table Mountain, plus a 270° view of the City Bowl and Harbour

\*\* Connects to a Deluxe Superior







DELUXE SUPERIOR BATHROOM





DUPLEX SUITE





THE DINING ROOM IN THE PENTHOUSE

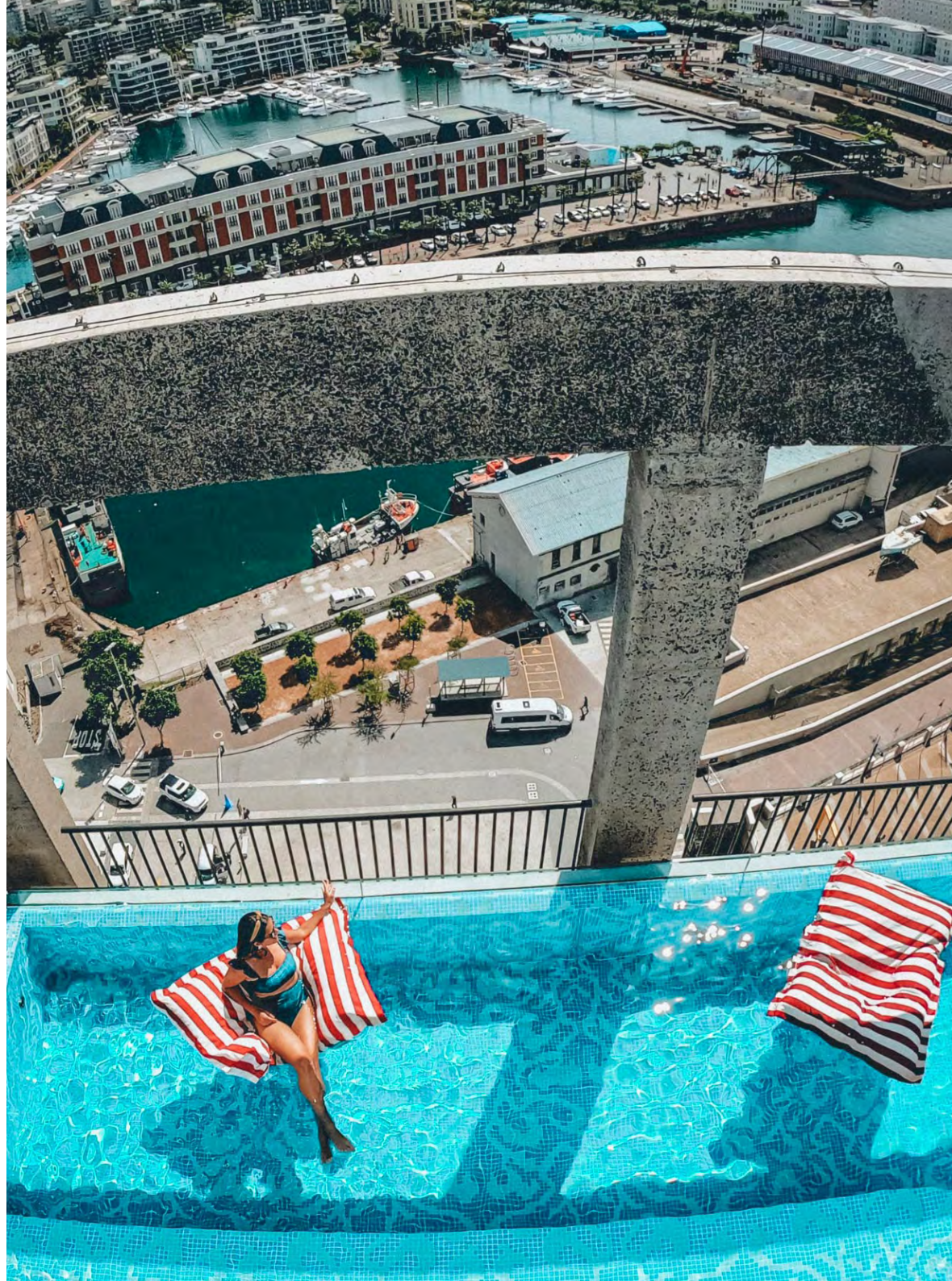


# FACILITIES

- The Granary Café
- The Willaston Bar
- The Sky Terrace
- Rooftop Restaurant
- Rooftop Swimming Pool
- The Silo Spa (Five Treatment Rooms, Sauna, Change Rooms)
- Gym
- Airport Transfers
- 24 Hour Guest Services
- Laundry Service
- Complimentary WiFi
- Concierge Services
- Private Meeting Rooms / Private Dining Rooms (The Wisdom Room Seats 22)
- Underground Parking
- Private Art Gallery

# GDS CODES

GDS/IDS	CHAIN CODES	PROPERTY CODE
Amadeus (IA)	GD	CPTSIL
Sabre (AA)	GD	397479
Galileo/ Apollo (UA)	GD	H1638
Worldspan (IP)	GD	CPTSI
Pegs ADS (WB)	GD	39093





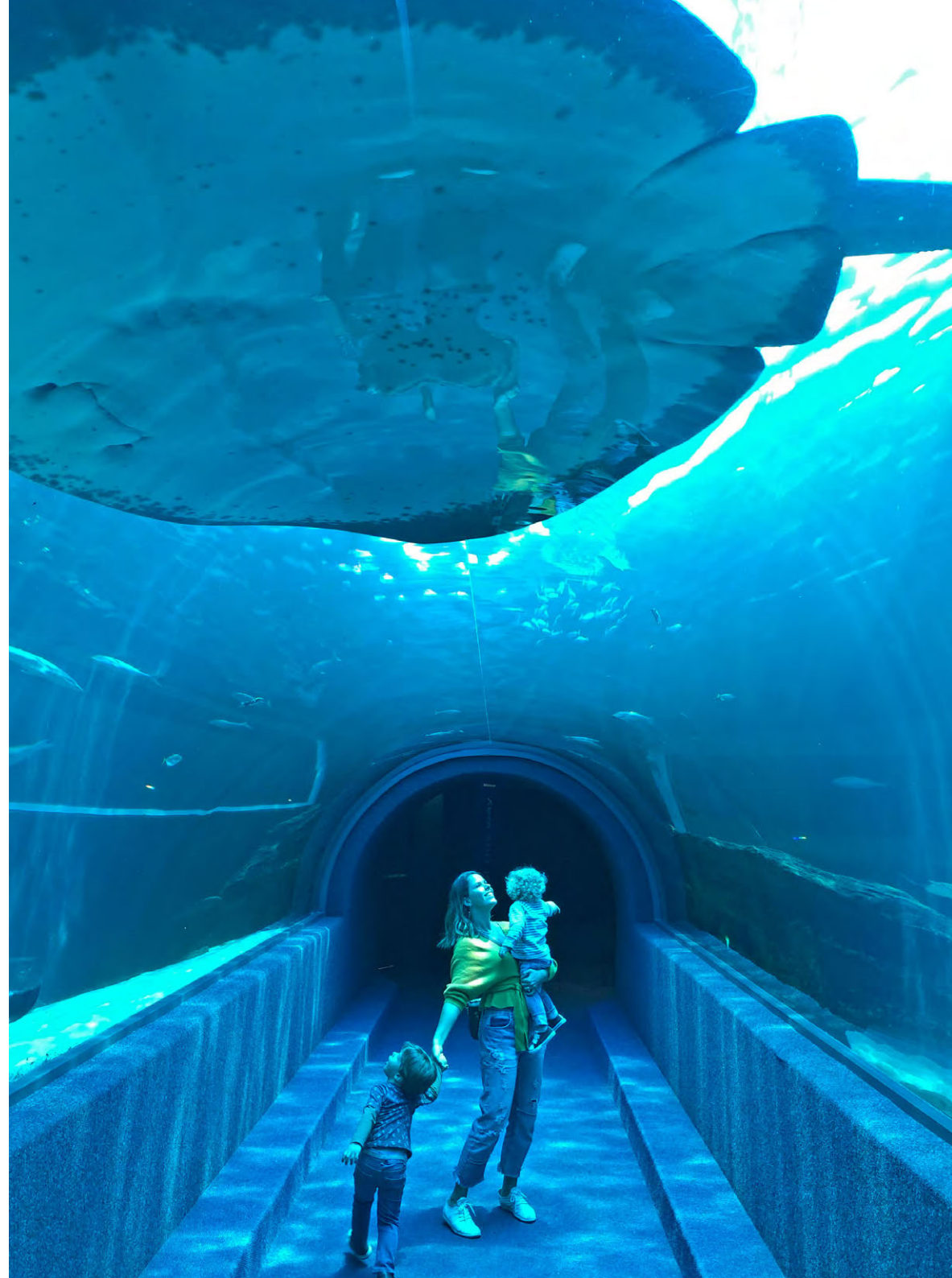
# FAMILY FUN AT THE SILO

Children of all ages are welcome and are specially catered for in our double-story Family Duplex Suites. Each is like a luxury two-bedroom apartment with a vast downstairs living room, dining room and cloakroom. Upstairs are two en-suite bedrooms – one master bedroom and one children's bedroom.

Families can also comfortably stay in our two-bedroom Royal Suites or in our one-bedroom Superior Suites which have inter-leading doors.

**There Are Numerous Activities For Kids To Enjoy While Visiting Cape Town such as:**

- The Aquarium
- Cave Golf
- Pirate Boat
- Scratch Patch
- The Big Wheel
- Planetarium
- Rush Indoor Trampolines
- World of Birds







THE GRANARY CAFÉ







THE WILLASTON BAR



# DINING AT THE SILO



## *The Granary Café*

A picture-perfect setting in which to savour something delicious including breakfast, lunch, dinner and our indulgent Royal Tea.



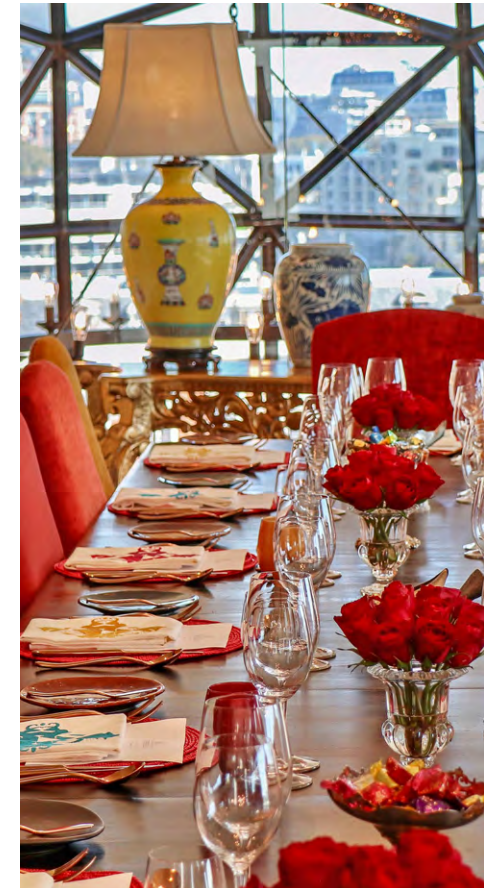
## *The Willaston Bar*

Enjoy crafted cocktails and our carefully curated wine list in this vibrant space. A selection of bar snacks, small plates and lunch is also served.



## *The Silo Rooftop*

The most scenic spot for a sunset drink or a casual lunch with 360° views from the tallest building in the V&A Waterfront. Enjoy sharing platters, salads, poké bowls, and more.



## *Private Dining*

The Wisdom Room was designed to host your special occasion. From birthdays to baby showers, this exclusive glass-fronted dining room is perfect.



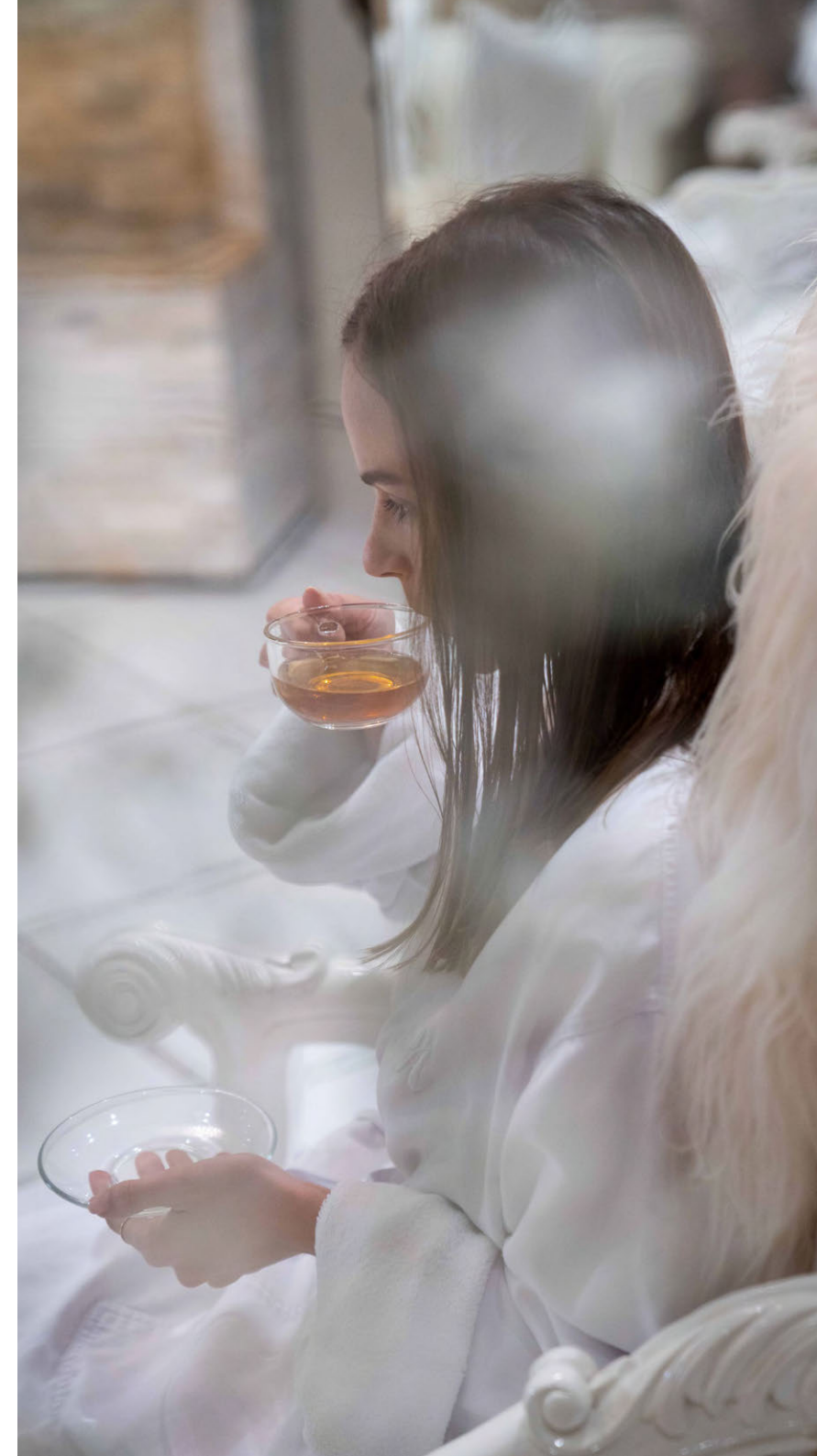


THE SILO ROOFTOP





SPA





# SUSTAINABILITY

*No one can ignore the positive impact that a sustainable design can have on the planet. Within this truth, and echoing the vision of the architect to retain the historic fabric and soul of the building, lies the key sustainability features of The Silo Hotel.*

## **THE RE-USE OF BUILDING MATERIAL**

The design of The Silo Hotel re-used an un-used structure while still maintaining the same level of operational efficiency that a new building would have provided. Furthermore all structure taken out within the building was crushed and as far as possible re-used on various other projects in the precinct.

## **NATURAL LIGHT & VENTILATION**

The thick exposed concrete structure aids operational energy efficiency by allowing the atrium space to be naturally ventilated while still maintaining comfortable temperatures during hot summer days. The atrium also brings in natural light deep into the space enhancing the indoor environmental quality.

## **THE CENTRAL SEA WATER COOLING PLANT**

Performance glazing was selected to control heat gain into the rooms while still allowing ample natural daylight. The faceted nature of the facade due to its geometry helps reduce incidental heat gain and radiant heat. Detailed energy and Computational Fluid Dynamic analysis were carried out to ensure an optimised facade for energy, comfort and daylight. The air conditioning system utilises a central sea water cooling plant. This plant offers a substantial reduction in the precincts energy and water consumption.

## **REDUCTION OF WATER CONSUMPTION**

The Silo Hotel uses low flow water fittings and fixtures that further reduce the buildings potable water consumption.







## THE ROYAL PORTFOLIO

### HEAD OFFICE

Tel: +27 (0) 21 671 7068

Email: [headoffice@trp.travel](mailto:headoffice@trp.travel)

### RESERVATIONS

Tel: +27 (0) 21 671 5502

Email: [reservations@trp.travel](mailto:reservations@trp.travel)

### ADDRESS

Suite 101 Intaba, 25 Protea  
Road, Claremont, 7708,  
South Africa

