

JUMBO
JUNCTION

ABOUT US

Welcome to Jumbo Junction, a luxury camp in the Selinda Spillway of the Okavango Delta, where untamed beauty, vibrant communities, and wildlife combine to create an unforgettable experience.

At Jumbo Junction, we're passionate about the Delta. The Kroon family and their loyal animal companions have created a haven for guests to immerse themselves in this remarkable wilderness and actively contribute to its conservation.

Our privileged location at the top of the Delta provides unparalleled opportunities to witness awe-inspiring wildlife interactions. It's a wildlife enthusiast's dream, leaving guests with lasting memories of the extraordinary wildlife thriving in this remarkable wilderness.

We believe in empowering local communities and treating their interests as our own. Jumbo Junction is deeply connected to the surrounding communities, reflecting our commitment to being good neighbours.

Amidst the awe-inspiring wilderness, Jumbo Junction offers an oasis of luxury and comfort. Our two chalets and seven tents, positioned along the waterfront and amidst the trees, provide privacy and stunning views. The main space welcomes guests with a comfortable lounge and dining area, while the swimming pool and deck offer a refreshing retreat.

Our farm-to-table approach ensures fresh, locally sourced ingredients that capture the vibrant essence of the Delta. We support local farmers in nearby villages, creating a harmonious symphony of tastes.

Preserving and showcasing the local culture is deeply rooted in Jumbo Junction. Guided visits to nearby villages offer encounters with friendly locals, cultural performances, and storytelling sessions that illuminate the rich heritage of the Okavango Delta.

Journey to Jumbo Junction and let your heart be captured and forever entwined with the spirit of this extraordinary place.





Photo Credit: James du Toit

CONSERVATION PROJECTS

LION RESEARCH

CLAWS (Communities Living Among Wildlife Sustainably) employ innovative approaches to promote human-wildlife coexistence. Our Seronga-based programme began in 2014 as a response to poisoning that killed 50% of the lion population along the northern edge of the Okavango Delta. Since our community-based work began, we have seen a meaningful change for good.



Photo Credit: James du Toit



Photo Credit: James du Toit

COMMUNITY & WILDLIFE

A team of specialists work with the communities most impacted by human-wildlife conflicts. The approach is twofold – firstly, to protect the livestock by offering hands-on solutions to promote coexistence with wildlife, and secondly, to protect the habitat of the Okavango Delta and the wildlife that move into the community wildlife conservancy areas.

OUR TEAM

From the moment you arrive at Jumbo Junction you will experience the dedication and commitment of our outstanding team.

There are the guides who will reveal the secrets of the Okavango Delta by opening the door to a world of wild beauty and fascinating stories around every corner.

Then you'll experience the camp staff who ensure your visit is outstanding in every way – the food, the drinks, your room, the lounge, the crackling fires, the snacks during thrilling game drives, and so much more.

All taken care of by our awesome team at Jumbo Junction!

We look forward to welcoming you to our world.



PATRICK | Chef



CISCO | Waiter / Barman



EQ | Guide



BARUTI | Guide



REBECCA | Scullery / Assistant Chef



MOS | Scullery / Assistant Chef



REETILE | Housekeeping



KIMMY | Housekeeping



HUSTLER | Poler / Maintenance



TWAMBA | Groundsman



GODFREY | Mechanic



GB | Groundsman





Photo Credit: James du Toit

OKAVANGO DELTA ACCOMMODATION.

Jumbo Junction is the ultimate way to safari, a bush camp that plants you within the Okavango wilderness – a temporary guest in the home of the wildlife. At night you will be surrounded by the strange magical sounds and smells of the savannah, beneath the starry night skies. This is the essence of an Okavango Delta safari.

Our camp consists of two chalets and seven tents with ensuite bathrooms. The accommodations are positioned along the waterfront and amongst the tree line providing the utmost privacy.

MAIN LODGE BUILDING

Features a dining area, a bar, a lounge and library under a large thatch and wooden pole structure overlooking a nearby lagoon.

A plunge pool for cooling off during the hot midday hours.

An open air boma where you can enjoy a sunset drink around the fire and later some night sky star gazing.



Photo Credit: James du Toit

Photo Credit: James du Toit



Photo Credit: James du Toit



Photo Credit: James du Toit



Photo Credit: James du Toit



Photo Credit: James du Toit



Photo Credit: Morne Andrews

JUMBO JUNCTION TENTED CAMP

Escape the everyday to our seven beautifully furnished tents, offering twin beds and an ensuite bathroom equipped with twin basins, a private toilet, and twin showers. Experience the convenience of two electrical power points with direct USB connections and ample lighting. Ease into relaxation on your private deck, taking in the views of the expansive floodplains and tranquil water channel.



* WIFI is available at the main lodge area only

GREEN SEASON	MID SEASON	HIGH SEASON
Jan/Feb/Mar/Dec US\$ 530 per person per night Child: (7-15): US\$ 265	Apr/Oct/Nov US\$ 590 per person per night Child: (7-15): US\$ 295	May/Jun/Jul/Aug/Sep US\$ 650 per person per night *Single Supplement: US\$ 260 applies Child: (7-15): US\$ 325

JUMBO JUNCTION CHALETS

Unwind in our spacious chalets, offering double or twin beds and ensuite bathrooms complete with basin, toilet, and shower. Enjoy the convenience of two electrical power points with device charging adapters, ample lighting, and a private verandah overlooking the picturesque floodplain and water channel. These chalets are also available as family units, where two children's beds can be placed in the rooms



* WIFI is available at the main lodge area only

GREEN SEASON	MID SEASON	HIGH SEASON
Jan/Feb/Mar/Dec US\$ 530 per person per night Child: (7-15): US\$ 265	Apr/Oct/Nov US\$ 590 per person per night Child: (7-15): US\$ 295	May/Jun/Jul/Aug/Sep US\$ 650 per person per night *Single Supplement: US\$ 260 applies Child: (7-15): US\$ 325

4x4 GAME DRIVES

Enjoy sightings of the varied wildlife the concession has to offer from the comfort of the open 4x4 off road game drive vehicle.

Stop along the way with your experienced guide on a morning game drive, sip on a mug of coffee with a breakfast sandwich or toast the spectacular sunset with a gin and tonic and bar snacks.



Photo Credit: Bedelia Basson



Photo Credit: James du Toit

BOAT SAFARIS

Boating through the water channels will provide access to the concession for game drives during the wet season or just enjoy a leisurely boat trip down the water channels.

Observe the spectacular aquatic birdlife, especially during the months of August and September. Sip on a sundowner while you drift down the channel whilst enjoying the scenery and game sightings.

EXPERIENCE THE OKAVANGO

With the selection of activities on offer, you are sure to have an unbelievable water and wildlife experience. The Okavango Delta is renowned for its abundance of wildlife and ensures an up close and personal experience with the amazing fauna and flora. Our location in the Northern Okavango Delta allows for both land and water activities.

Most activities are conducted by our experienced guides who we employ from the local community, and this ensures all guides have an advantage of local knowledge of the area sightings.



Photo Credit: Tiaan Gildenhuys

MOKORO (DUGOUT CANOE)

A mokoro activity is an iconic Okavango Delta activity; you will be guided by your specialist poler guide into shallow waters where a boat cannot reach.

Glide silently through the reeds and water lily "fields" and observe the wonderful aquatic flora and fauna, the pods of hippos wallowing in the channels and other game along the water's edge.

PHOTOGRAPHY

Botswana is a photographer's dream destination! With spectacular scenery, amazing wildlife encounters and fascinating people this is the ideal location for a photographic safari. Jumbo Junction is ideally situated to offer you a unique photographic safari experience.



Photo Credit: James du Toit

GUIDED WALKS

This is a unique way to discover the bush. Our experienced, guide will take you on a leisurely walk where time is spent observing the smaller details in the bush that one would normally miss on a game drive.

Bush walks are dependent on the weather and the terrain at the time.



Photo Credit: James du Toit

CONSERVATION TOURS (CLAWS & ECO-EXIST)

Experience our captivating Conservation Tours, combining CLAWS and EcoExist to showcase remarkable wildlife and community management. Join us for a morning or afternoon activity merging both tours into one enriching experience.

CLAWS focuses on cattle farming and lion conservation, coinciding with the late afternoon return of cattle to the Boma. Witness fascinating boma structures and learn about lion collaring for monitoring and community safety. Engage with CLAWS members who passionately explain conflict management strategies between cattle farmers and lions.

EcoExist invites you to their satellite station just 5 kilometres from our camp. Discover their meticulous approach to mitigating conflicts between elephants and crop farmers. Engage in a comprehensive briefing on techniques like electric fencing and farmer relocation, ensuring harmonious coexistence.

At Jumbo Junction, responsible tourism is our belief. For each guest on these enlightening tours, we allocate \$50.00 per guest to each NGO, totalling \$100.00 per guest for CLAWS and EcoExist. Your contribution directly supports their vital conservation and community development work.



Photo Credit: James du Toit



VILLAGE TOURS

Experience the Village Tour, immersing you in the vibrant Delta communities. Hop on a traditional donkey cart to Gunotsoga, our closest village. Discover their daily lives and rich culture.

Visit key landmarks like the local clinic and primary school. Immerse yourself in the traditional village atmosphere at the kgotla.

Conclude the tour at a delightful local "coffee shop," savouring authentic flavours that showcase the community's culinary traditions.

At Jumbo Junction, we prioritise community upliftment. Your participation in the Village Tour contributes \$50.00 per guest to community development initiatives, fostering sustainable growth and realising their aspirations.

HELICOPTER FLIPS

Experiencing the Okavango Delta from the comfort of a helicopter is a unique and exhilarating activity.

The photographic opportunities are incredible, and you'll spot many wildlife species while exploring the delta from a bird's eye view.



FISHING

The Okavango Delta provides delightful fishing between the months of March and September.

Try your hand at fly fishing for Tillapea and African Pike.



Photo Credit: Tiaan Gildenhuys

TRAVEL IN THE OKAVANGO DELTA.

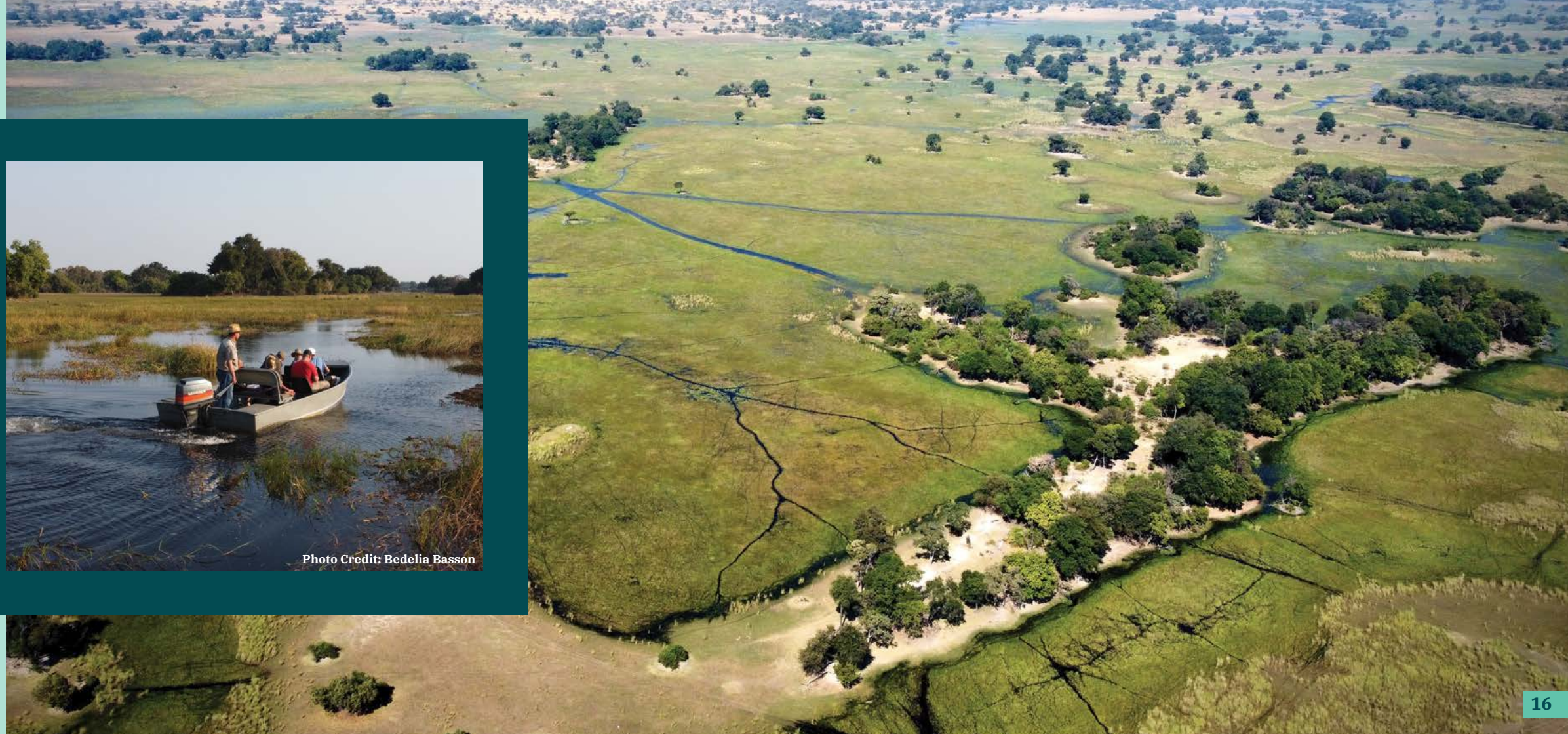
There are two ways to explore the Okavango Delta: by road and by air. While road travel appeals to self-drive enthusiasts, certain areas can only be accessed by small planes.

The fly-in option allows you to reach remote camps on islands and private concessions that are inaccessible by vehicle, even a 4x4. The activities available at these camps depend on their location and the water levels of the Okavango's flood. Some camps offer water-based or land-based activities exclusively.

Camps like Jumbo Junction provide year-round experiences, combining both water-based and land-based adventures. These camps are strategically located in the northern part of the delta, where deep channels feed the rest of the delta in the south.



Photo Credit: Bedelia Basson



An aerial photograph of the Okavango Delta, showing a winding river channel through a vast, flat landscape of golden-brown and green vegetation. The water reflects the light, creating a shimmering effect. In the lower center, a small motorboat with several people is moving along the river, leaving a wake behind it. The overall scene is serene and captures the unique beauty of this wetland environment.

GETTING TO THE OKAVANGO DELTA.

The main access points to the Okavango Delta are Maun and Kasane. Maun, located on the southern tip of the delta, and Kasane, on the Chobe River in the north, have international airports served by Air Botswana and Airlink from Johannesburg, South Africa.

The easiest way to reach camps and lodges in the Okavango is by light aircraft. A short flight from Maun offers breathtaking aerial views of the delta. Please note that strict luggage restrictions apply, so pack light and consult us or your agent for a useful packing list.

If you prefer to drive, a fully equipped 4x4 vehicle is necessary. Conditions can be challenging, with rough terrain, sandy tracks, water crossings, and muddy stretches during the wet season. A self-drive safari requires confidence and preparedness.

ACCESSIBILITY



BY AIRPLANE

Seronga Airstrip is the primary Air Access.

- Public Airstrip
- Elevation: 3,240 ft / 988m
- Longitude/Latitude: 18°49'25"S 22°25'25"E
- Surface: Gravel
- Length: 1100m / 3609ft
- Direction: 12/30
- Guest will have a 25min vehicle transfer to camp.

Flying Times:

- To/from Maun: 40 minutes
- To/from Kasane: 90 minutes



HELI PAD

- Elevation: 976m
- Longitude / Latitude: 18°49'27.03"S 22°36'13.15"E
- Surface – Gravel
- Length: n/a
- Direction: n/a

BOAT TRANSFER

Self-Drive to Sepupa. 1hr to 1,5hr boat transfer from Sepupa across the panhandle of the Okavango to Seronga, where you will be collected with a 25min transfer to camp.

SELF-DRIVE TO CAMP

4–5hr Drive from Maun to Shakawe, over the newly built bridge, with a 2hr dust road back south to the camp. Sign boards down to the camp.

FAQS & GUEST INFORMATION.

LOCATION

Jumbo Junction is situated in a remote area on the northern fringes of the Okavango Delta. The camp is located at NG12 a 120,000-hectare concession with an iconic landscape and a variety of wildlife.

GPS COORDINATES

5 18° 49'31.94 E22° 36' 21.0

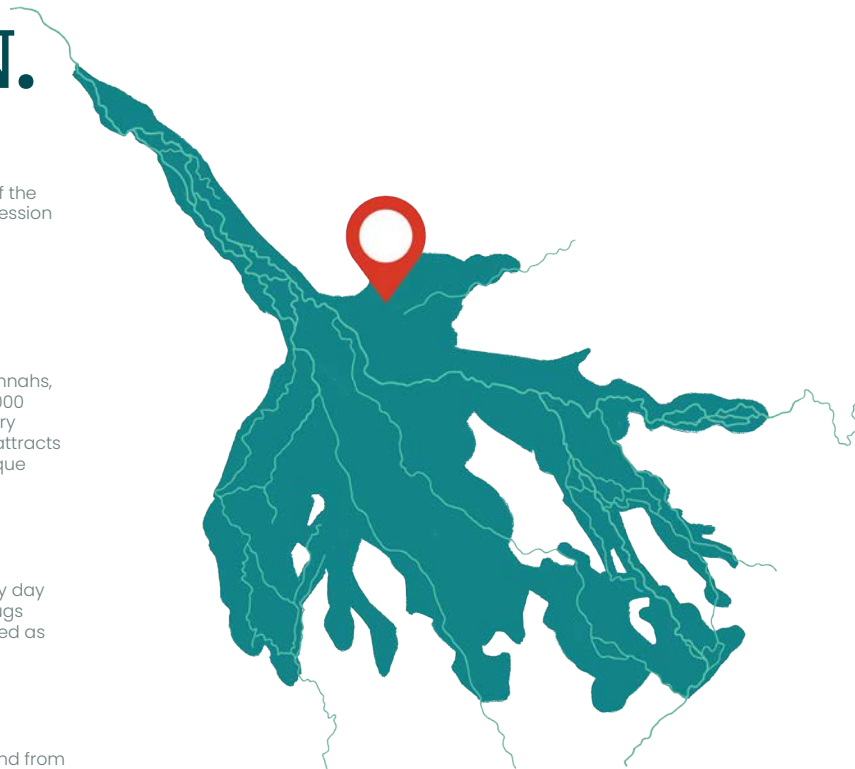
Botswana's magnificent Okavango Delta consists of floodplains, savannahs, islands, a maze of lagoons and channels covering an area of over 16,000 square km in flood and shrinking to less than 9,000 square km in the dry season. Trapped in the parched Kalahari sands, the freshwater oasis attracts a variety of wildlife that depends on the permanent waters of this unique wilderness.

ELECTRICITY

Jumbo Junction operates on AC 220V solar power, providing electricity day and night. Guest accommodation is equipped with 2 x 220-volt AC plugs suitable for charging camera and video batteries. The generator is used as a backup during cloudy conditions when solar energy is insufficient.

WATER

We source water from the adjacent lagoon during the flood season and from shallow well points when the flood subsides. Water at Jumbo Junction is safe to drink as we conduct regular water tests and treat the water using activated carbon and sand filters. Our reverse osmosis system purifies water by removing pathogens and minerals, providing purified water for guests. Regular maintenance and film replacement ensure the system's effectiveness.



SEASONS

WINTER: APRIL - SEPTEMBER

Days are dry, sunny, clear, and cool to warm, whilst temperatures can drop sharply in the evening.

During the day temperatures reach 25°C and evening temperatures can be as low as 2°C. In some dry areas the temperature can plummet below freezing. No rainfall occurs during the winter months.

SUMMER: SEPTEMBER - APRIL

October brings scorching temperatures, reaching highs of 40°C or more. Cloud cover arrives with the first rains in late November or early December, providing temporary relief from the heat. The rainy season, which typically ends in February, features hot and sunny mornings followed by short, intense thunderstorms in the late afternoon. Daytime temperatures can rise to 38°C, while nights cool to around 20°C. Rainfall is unpredictable and varies greatly across the region, often occurring in isolated areas. Showers are often followed by sunshine, resulting in significant evaporation.

GAME VIEWING

Days are dry, sunny, clear, and cool to warm, whilst temperatures can drop sharply in the evening.

During the day temperatures reach 25°C and evening temperatures can be as low as 2°C. In some dry areas the temperature can plummet below freezing. No rainfall occurs during the winter months.



Photo Credit: Bedelia Basson

HELICOPTER SCENIC FLIGHT

Our scenic/photography flights are an opportunity not to miss. Moments after departing, you will enjoy the breathtaking views seen only from a helicopter. Experience the crystal-clear water channels meandering their way through lagoons while journeying deep into the lush green flood plains to explore the abundant wildlife of the Okavango region. Doors are taken off for a better photographic experience flying over some of the most remote, uninhabited, and wild areas of the Okavango Delta.



VISIT US

NG12 Concession,
Gunotsoga Village,
Okavango Delta,
Botswana

CALL US

+267 73 106 501

EMAIL US

reservations@jumbojunction.com
reception@jumbojunction.com



Photo Credit: Sonia Kroon

READY TO BOOK YOUR STAY?

www.jumbojunction.com