



ILALA LODGE HOTEL RATES 2025

VALID 1st April 2025 - 31st March 2026

INTERNATIONAL RACK

CLASSIC ROOMS

- 25 rooms with 2 x three-quarter beds in each room
- 7 rooms with King-size beds in each room
- 2 sets x Classic Interconnecting rooms
- Private patio or balcony with garden view
- Ensuite bathrooms with shower
- Satellite television, hair dryer, ceiling fan and air conditioning
- Daily housekeeping
- Fixed wardrobe with hanging and storage space
- Tea & coffee making facilities, coffee espresso machine, electronic safe

B&B per person per night	US\$ RACK
Sharing	258
Single	369
Children U12 sharing	129
Child U12 single	186

Value Adds:

Minibar with complimentary initial stocking of Mineral water, 2 beers and 2 cokes. Mineral water replenished twice daily.



DELUXE ROOMS

- 13 rooms with 2 x three-quarter beds in each room
- 23 rooms with King-size beds in each room
- 4 sets x Deluxe Interconnecting rooms - middle floor
- 3 sets x Deluxe Interconnecting rooms - ground floor
- Private patio or balcony with garden view
- Ensuite bathrooms with shower
- Satellite television, hair dryer, ceiling fan and air conditioning
- Daily housekeeping
- Fixed wardrobe with hanging and storage space
- Tea & coffee making facilities, coffee espresso machine, minibar fridge, electronic safe

B&B per person per night	US\$ RACK
Sharing	307
Single	438
Children U12 sharing	152
Child U12 single	221

Value Adds:

Minibar with complimentary initial stocking of 2 beers, 2 cokes, 2 sugar-free soft drinks, 1x 250 ml red wine, 1x 250ml white wine and chocolates. Mineral water replenished twice daily.



CLASSIC SUITES

- 2 x Classic Suites, each with a King-size bed and a three-quarter bed
- Interconnects with a twin Classic Room
- Ensuite bathrooms with bath and separate shower
- Private patio or balcony with garden view
- Satellite television, hair dryer, ceiling fan and air conditioning
- Daily housekeeping
- Fixed wardrobe with hanging and storage space
- Tea & coffee making facilities, coffee espresso machine, electronic safe

B&B per person per night	US\$ RACK
Sharing	393
Single	492
Extra adult sharing	216
Extra child U12 sharing	135

Value Adds :

- Arrival fruit bowl and snacks (mixed nuts, dried fruit, cheese biscuits, date balls)
- Bath salts and bubble bath
- Full complimentary minibar replenished daily (Including 2x 375ml red & white wine, 2 x 50ml vodka, gin, whiskey & brandy, 4 x coke, coke zero, soda, ginger ale, lemonade, tonic water. Water replenished twice daily.)



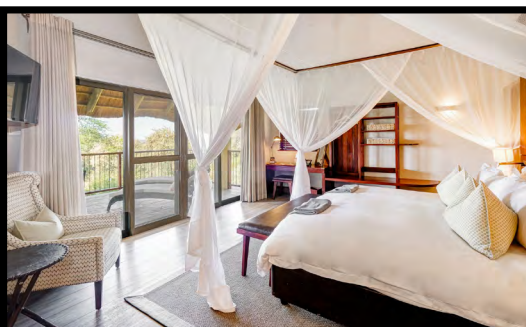
EXECUTIVE SUITES

- Ensuite bathrooms with bath, separate shower and additional guest toilet
- 2 Executive Suites with King-size beds
- Large private lounge leading onto spacious balcony
- Satellite television, hair dryer, ceiling fan and air conditioning
- Daily housekeeping
- Fixed wardrobe with hanging and storage space
- Tea & coffee making facilities, coffee espresso machine, electronic safe

B&B per person per night	US\$ RACK
Sharing	455
Single	569

Value Adds :

- Welcome sparkling wine
- Bespoke card
- Arrival fruit bowl and snacks (mixed nuts, dried fruit, cheese biscuits, date balls)
- Bath salts and bubble bath
- Full complimentary minibar replenished daily (Including 2x 375ml red & white wine, 2 x 50ml vodka, gin, whiskey & brandy, 4 x coke, coke zero, soda, ginger ale, lemonade, tonic water. Water replenished twice daily.)



THE STRATHEARN SUITE

The Strathearn Suite offers an abundance of space in a class of its own.

- Spacious bedroom with King-size bed leading onto spacious balcony
- Ensuite bathroom with walk in shower
- Indulgent oversized bathtub and double vanities
- Large private lounge
- Private balcony
- Large hot tub on balcony
- Satellite television, hair drying ceiling fan and air conditioning
- Daily housekeeping
- Fixed wardrobe with hanging and storage space
- Tea & coffee making facilities, coffee espresso machine, microwave and electronic safe

B&B per person per night	US\$ RACK
Sharing	604
Single	756

Value Adds :

- River Cruise (subject to availability)
- Welcome sparkling wine
- Bath salts and bubble bath
- In-room mini stocking of breakfast offerings such as yoghurt, cheese board, mini bread loaves etc.
- Arrival fruit platter, chocolates and snacks (mixed nuts, dried fruit, cheese biscuits, date balls)
- Full complimentary minibar replenished daily. Including stocking of 2 x 750ml red & white wine, 2 x 50ml vodka, gin, whiskey & brandy, 4 x coke, coke zero, soda, ginger ale, lemonade, tonic water 1 x 375ml Amarula & 1 x 750ml sparkling wine. Mineral water replenished twice daily

Additional Offerings :

Private in-room dining available upon request



THE STRATHEARN FAMILY SUITE

The Strathearn Family Suite accommodates a maximum of six guests in total and comprises of the Strathearn Suite, interconnecting with an Executive Suite and a twin Deluxe Room.

- All room types are interconnecting
- All room types include ensuite facilities per room
- Amenities and facilities as per room descriptions
- Two spacious lounge areas shared between the three rooms

B&B (all 3 rooms* per night)	US\$ RACK
Family Suite *6th person stays free	2,438

Value Adds :

- River Cruise (subject to availability)
- Welcome sparkling wine
- Bath salts and bubble bath
- In-room continental breakfast
- Arrival fruit platter, chocolates and snacks (mixed nuts, dried fruit, cheese biscuits, date balls).
- Full complimentary minibar replenished daily. (Including stocking of 2 x 750ml red & white wine, 2 x 50ml vodka, gin, whiskey & brandy, 4 x coke, coke zero, soda, ginger ale, lemonade, tonic water 1 x 375ml Amarula & 1 x 750ml sparkling wine. Mineral water replenished twice daily)

Additional Offerings :

Private in-room dining available upon request





ILALA LODGE HOTEL RATES 2025

VALID 1st April 2025 - 31st March 2026

INTERNATIONAL RACK

THE CASSIA RESTAURANT

Experience gourmet dining in Victoria Falls at the top-rated Cassia Restaurant. Centrally located only minutes away from the Victoria Falls at Ilala Lodge Hotel, the highly-rated restaurant offers a delicious breakfast buffet, lunch and al fresco evening dining under the starry African sky.

THE PALM RIVER HOTEL

Enjoy a fusion fare within the hotel's grand dining hall, encompassed by tall ceilings, classic parquet flooring and large sliding doors that open out onto an idyllic riverfront vista. The dining hall flows onto a veranda space and onto an al fresco dining area, sheltered by tall ceilings that merge with the canopy of trees.

Per Person	US\$ NETT
The Cassia Restaurant 3-course A La Carte Dinner	42
The Palm River Hotel 3-course A La Carte Dinner (includes complimentary return transfers to Ilala Lodge Hotel)	44
Riverside Dining Experience (includes complimentary return transfers to Ilala Lodge Hotel)	47
Group Riverside Barbeque Dinner (requires a minimum of 12 guests, includes complimentary return transfers to Ilala Lodge Hotel)	50

NOTE: Dining rates exclude drinks unless otherwise stated. Please refer to our Transfers Rates sheet for return hotel transfers for guests not staying at either the Palm River Hotel or Ilala Lodge Hotel.



RIVERSIDE DINING EXPERIENCE

The Riverside Dining Experience at the Palm River Hotel offers authentic African-style barbeque dining within an unparalleled setting on the edge of the Zambezi River. The diverse menu includes traditional Zimbabwean specialities, fresh salads and flavour-filled side options. The experience also includes return transfers to Ilala Lodge and a welcome drink. Available throughout the year weather permitting. Cash bar available.

GROUP RIVERSIDE BARBEQUE DINNER

Experience a unique group African-style barbeque on the banks of the Zambezi River, under a star lit African Sky. Includes 3-course barbeque dinner, traditional entertainment, one bottle of water and one glass of red or white wine, beer or soft drink per person with a cash bar available. Located at the Riverside Venue neighbouring Palm River Hotel.

Requires a minimum of 12 guests.



W : www.ilalalodge.com
A : 411 Livingstone Way, Victoria Falls
T : +263 (0) 83 28 44737/8/9

MARKETING :
marketing@palmhospitality.co.zw
marketing3@palmhospitality.co.zw

RESERVATIONS :
resman@ilalalodge.co.zw
reservations@ilalalodge.co.zw

Agent Portal : <https://www.ilalalodge.com/agents/>
Password : IlalaAgents





ILALA LODGE HOTEL RATES 2025

VALID 1st April 2025 - 31st March 2026

INTERNATIONAL RACK

EXTRAS

2 NIGHT VALUE ADD

Valid during Low Season Periods

1 January - 31 March & 1 November - 20 December

Book 2 nights on a B&B basis in any room type plus a River Cruise and guests will receive a free 3-course dinner in the Cassia Restaurant.

NOTE:

Valid for bookings on any room type

Dinner excludes drinks

Valid per person per 2 night consecutive booking

Not applicable to group bookings - FIT only - maximum 6 guests per booking

3 NIGHT VALUE ADD

Valid from 1 January - 20 December

Book 3 consecutive nights stay per person (up to max 6 pax) and guests will receive:

- A complimentary 3-course dinner, at The Cassia Restaurant (excludes drinks)
- A complimentary 3-course dinner at The Palm River Hotel with return transfers (excludes drinks)

NOTE :

All Value Adds are subject to availability

Not applicable to group bookings - FIT only - maximum 6 guests per booking

Ilala Lodge Hotel reserves the right to amend the Value Add T&C's without notice



ADDITIONAL OFFERINGS

Additional offerings for Tour leaders, Guides and Pilots. No single supplement. Based on a B&B rate per person per night.

Subject to availability.

B&B per person, per night	US\$ NETT
Tour leader, Guide or Pilot	138



W : www.ilalalodge.com
 A : 411 Livingstone Way, Victoria Falls
 T : +263 (0) 83 28 44737/8/9

MARKETING :
marketing@palmhospitality.co.zw
marketing3@palmhospitality.co.zw

RESERVATIONS :
resman@ilalalodge.co.zw
reservations@ilalalodge.co.zw

Agent Portal : <https://www.ilalalodge.com/agents/>
 Password : IlalaAgents



ACTIVITIES, TOURS & TRANSFERS

LUXURY RIVER CRUISES

The luxury Ra-Ikane River Cruise entails a relaxing river venture on historic and intimate cruise boats, offering Breakfast, Birdwatching, Lunch and Sunset cruises on the Zambezi River. The monohull design of the riverboats enables them to navigate further up the Zambezi River, through shallow river channels and closer to the wildlife on the river banks. For larger groups, the luxurious River Odyssey offers an opulent Breakfast and Sunset cruises, offering a spacious and relaxing experience onboard its twin-deck.

- Cruises launch from site located next to Palm River Hotel
- Breakfast/Birdwatching Cruises include return hotel transfers within Victoria Falls town, continental breakfast, Tea, coffee and river usage fees
- Lunch Cruises include return hotel transfers within Victoria Falls town, beverages (local and imported), light 2 course meal, and river usage fees
- Sunset Cruises include return hotel transfers within Victoria Falls Town, beverages (local and imported), snacks and river usage fees

TRANSFERS & TOURS

Victoria Falls Rainforest Entrance Fees:

International	-	US\$50 per person per entrance
SADC	-	US\$30 per person per entrance
Zimbabwean	-	US\$7 per person per entrance

Ra-ikane and River Odyssey Cruise* (per person)	US\$ RACK
Breakfast, Birdwatching or Lunch Cruise	85
Sunset Cruise	94

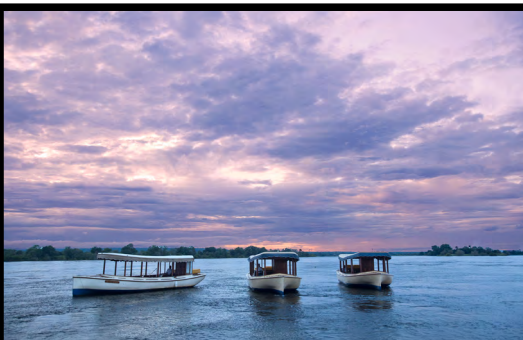
*Subject to 3rd party changes

*Subject to availability

*Private boat hire available on request

Per person* (min 2 pax)	US\$ RACK
Victoria Falls Town to Victoria Falls Airport	18
Private Victoria Falls Airport transfers (min 4 pax)	18
Victoria Falls inter-hotel return transfer	9
Victoria Falls Town to Livingstone Town, Zambia	40
Victoria Falls Town to Kasane Town, Botswana	68
Victoria Falls Town to Hwange Main Gate (min 4 pax)	71
Guided Tour of the Victoria Falls Rainforest (excludes National Parks Rainforest Entrance Fees)	25

*rates are subject to third party changes.





ILALA LODGE HOTEL RATES 2025

VALID 1st April 2025 - 31st March 2026

INTERNATIONAL RACK

TERMS & CONDITIONS

BOOKING POLICY

- Check in: 14:00 hrs
- Check out: 11:00 hrs
- Rooms will be held until 18:00 hrs. After which, rooms will automatically be released unless hotel is informed of late arrivals
- Guests are required to present a voucher where relevant upon arrival. This can be in printed or digital format. Should agent no longer issue vouchers, written confirmation will be required
- Additional request or extras must be indicated on booking request by Travel Agent/Tour Operator. Where this is not the case, guests will be asked to settle direct.
- The hotel will invoice at the negotiated nett rate, inclusive of 15% VAT and 2% Government Tourism Levy.
- Children's rate has been indicated on the rates sheets
- Children under the age of 4 will be accommodated free of charge when sharing a room with their parents or other paying guests
- Group Booking Policy: Book 16 pax and the 17th pax receives complimentary accommodation on a B&B basis
- The hotel reserves the right to amend the above rates in-line with any government statutory increases

FIT CANCELLATION POLICY

- A 20% non-refundable deposit must be made within 30 days from the date of placing the booking
- The balance must be made on or before 60 days prior to travel date
- If the booking is within 60 days of travel full payment is required

Cancellation Fees

- Bookings made within 30 days or less of arrival – 100% cancellation fee
- 60 – 30 days – 50% cancellation fee
- More than 60 days – 20% non-refundable deposit retained
- The above percentages are based on the total value of the amount shown on invoice

GROUPS CANCELLATION POLICY

- Applicable to groups of 16 or more paying guests
- A 20% non-refundable deposit must be made within 30 days from the date of placing the booking
- The balance must be made on or before 60 days prior to travel date
- If the booking is within 60 days of travel full payment is required

Cancellation Fees

- Bookings made within 30 days or less of arrival – 100% cancellation fee
- 60 – 30 days – 50% cancellation fee
- More than 60 days – 20% non-refundable deposit retained
- The above percentages are based on the total value of the amount shown on invoice

