



ILALA LODGE HOTEL RATES 2024

VALID 1st APRIL 2024 - 31st MARCH 2025

INTERNATIONAL RACK

STANDARD ROOMS

- 25 rooms with 2 x three-quarter beds in each room
- 7 rooms with King-size beds in each room
- 2 sets x Standard Interconnecting rooms
- Private patio or balcony with garden view
- Ensuite bathrooms with shower
- Satellite television, hair dryer, ceiling fan and air conditioning
- Tea & coffee making facilities, coffee espresso machine, electronic safe

B&B per person per night	US\$ RACK
Sharing	246
Single	351
Children U12 sharing	122
Child U12 single	177

Value Adds : Minibar with complimentary initial stocking of Mineral water, 2 beers and 2 cokes. Mineral water replenished twice daily.



DELUXE ROOMS

- 13 rooms with 2 x three-quarter beds in each room
- 23 rooms with King-size beds in each room
- 4 sets x Deluxe Interconnecting rooms - middle floor
- 3 sets x Deluxe Interconnecting rooms - ground floor
- Private patio or balcony with garden view
- Ensuite bathrooms with shower
- Satellite television, hair dryer, ceiling fan and air conditioning
- Tea & coffee making facilities, coffee espresso machine, minibar fridge, electronic safe

B&B per person per night	US\$ RACK
Sharing	284
Single	405
Children U12 sharing	141
Child U12 single	204

Value Adds : Minibar with complimentary initial stocking of 2 beers, 2 cokes, 2 sugar free soft drinks, 1 white wine, 1 red wine and chocolates. Mineral water replenished twice daily.



W : www.ilalalodge.com

A : 441 Livingstone Way, Victoria Falls

T : +263 (0) 83 28 44737/8/9

Agent Portal : <https://www.ilalalodge.com/agents/> Password : IlalaAgents

MARKETING :

Caroline : marketing@ilalalodge.co.zw
marketing3@ilalalodge.co.zw

RESERVATIONS :

Manager : resman@ilalalodge.co.zw
reservations@ilalalodge.co.zw





ILALA LODGE HOTEL RATES 2024

VALID 1st APRIL 2024 - 31st MARCH 2025

INTERNATIONAL RACK

STANDARD SUITES

- 2 x Standard Suites, each with a King-size bed and a three-quarter bed
- Interconnects with a twin Deluxe Room
- Ensuite bathrooms with bath and separate shower
- Private patio or balcony with garden view
- Satellite television, hair dryer, ceiling fan and air conditioning
- Tea & coffee making facilities, coffee espresso machine, electronic safe
- Full complimentary minibar replenished daily. Mineral water replenished twice daily.

B&B per person per night	US\$ RACK
Sharing	351
Single	439
Extra adult sharing	193
Extra child U12 sharing	120

Value Adds :

Arrival fruit bowl and snacks (mixed nuts, dried fruit, cheese biscuits, date balls)
Bath salts and bubble bath



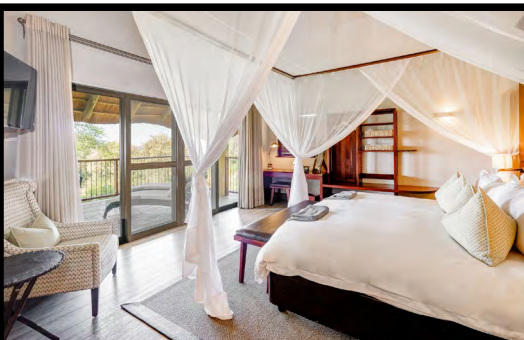
EXECUTIVE SUITES

- Ensuite bathrooms with bath, separate shower and additional guest toilet
- 2 Executive Suites with King-size beds
- Large private lounge leading onto spacious balcony
- Satellite television, hair dryer, ceiling fan and air conditioning
- Tea & coffee making facilities, coffee espresso machine, electronic safe
- Full complimentary minibar replenished daily. Mineral water replenished twice daily.

B&B per person per night	US\$ RACK
Sharing	406
Single	508

Value Adds :

Welcome sparkling wine
Bespoke card
Arrival fruit bowl and snacks (mixed nuts, dried fruit, cheese biscuits, date balls)
Bath salts and bubble bath



W : www.ilalalodge.com

A : 441 Livingstone Way, Victoria Falls

T : +263 (0) 83 28 44737/8/9

Agent Portal : <https://www.ilalalodge.com/agents/> Password : IlalaAgents

MARKETING :

Caroline : marketing@ilalalodge.co.zw
marketing3@ilalalodge.co.zw

RESERVATIONS :

Manager : resman@ilalalodge.co.zw
reservations@ilalalodge.co.zw



THE STRATHEARN SUITE

The Strathearn Suite offers an abundance of space in a class of its own.

- Spacious bedroom with King-size bed leading onto spacious balcony
- Ensuite bathroom with walk in shower
- Indulgent oversized bathtub and double vanities
- Large private lounge
- Private balcony
- Large hot tub on balcony
- Satellite television, hair drying ceiling fan and hair conditioning
- Tea & coffee making facilities, coffee espresso machine, microwave and electronic safe
- Full complimentary minibar replenished daily. Mineral water replenished twice daily

B&B per person per night	US\$ RACK
Sharing	540
Single	675

Value Adds :

River Cruise (subject to availability)
 Welcome sparkling wine
 Bath salts and bubble bath
 In-room continental breakfast
 Arrival fruit platter, chocolates and snacks (mixed nuts, dried fruit, cheese biscuits, date balls)

Additional Offerings :

Private in-room dining available upon request



THE STRATHEARN FAMILY SUITE

The Strathearn Family Suite accommodates a maximum of six guests in total and comprises of the Strathearn Suite, interconnecting with an Executive Suite and a twin Deluxe Room.

- All room types are interconnecting
- All room types include ensuite facilities per room
- Amenities and facilities as per room descriptions
- Two spacious lounge areas shared between the three rooms
- Full complimentary minibar replenished daily. Mineral water replenished twice daily.

B&B (all 3 rooms* per night)	US\$ RACK
Family Suite *6th person stays free	2,177

Value Adds :

River Cruise (subject to availability)
 Welcome sparkling wine
 Bath salts and bubble bath
 In-room continental breakfast
 Arrival fruit platter, chocolates and snacks (mixed nuts, dried fruit, cheese biscuits, date balls)

Additional Offerings :

Private in-room dining available upon request





ILALA LODGE HOTEL RATES 2024

VALID 1st APRIL 2024 - 31st MARCH 2025

INTERNATIONAL RACK

THE CASSIA RESTAURANT

Experience gourmet dining in Victoria Falls at the top-rated Cassia Restaurant. Centrally located only minutes away from the Victoria Falls at Ilala Lodge Hotel, the highly-rated restaurant offers a delicious breakfast buffet, lunch and al fresco evening dining under the starry African sky.

THE PALM RIVER HOTEL

Enjoy a fusion fare within the hotel's grand dining hall, encompassed by tall ceilings, classic parquet flooring and large sliding doors that open out onto an idyllic riverfront vista. The dining hall flows onto a veranda space and onto an al fresco dining area, sheltered by tall ceilings that merge with the canopy of trees.

Per Person	US\$ NETT
The Cassia Restaurant 3-course A La Carte Dinner	40
The Palm River Hotel 3-course A La Carte Dinner (includes return transfers)	42
Riverside Dining Experience (includes return transfers)	45
Group Riverside Barbeque Dinner (requires a minimum of 12 guests, excludes return transfers)	45



RIVERSIDE DINING EXPERIENCE

The Riverside Dining Experience at the Palm River Hotel offers authentic African-style barbeque dining within an unparalleled setting on the edge of the Zambezi River. The diverse menu includes traditional Zimbabwean specialities, fresh salads and flavour-filled side options. The experience also includes return transfers, a welcome drink and light entertainment by local musicians. Available throughout the year weather permitting. Cash bar available.

GROUP RIVERSIDE BARBEQUE DINNER

Experience a unique group African-style barbeque on the banks of the Zambezi River, under a star lit African Sky. Includes 3-course barbeque dinner, traditional entertainment, one bottle of water and one glass of red or white wine, beer or soft drink per person with a cash bar available. Located at the Riverside Venue neighbouring Palm River Hotel.



W : www.ilalalodge.com

A : 441 Livingstone Way, Victoria Falls

T : +263 (0) 83 28 44737/8/9

Agent Portal : <https://www.ilalalodge.com/agents/> Password : IlalaAgents

MARKETING :

Caroline : marketing@ilalalodge.co.zw
marketing3@ilalalodge.co.zw

RESERVATIONS :

Manager : resman@ilalalodge.co.zw
reservations@ilalalodge.co.zw





ILALA LODGE HOTEL RATES 2024

VALID 1st APRIL 2024 - 31st MARCH 2025

INTERNATIONAL RACK

EXTRAS

VALUE ADDS

2 night Value Add

Valid during Low Season Periods

1 January - 31 March & 1 November - 20th December

Book 2 nights on a B&B basis in any room type, with a River Cruise included in your package, guests will receive :

- Complimentary 3-course dinner per person at The Cassia Restaurant (excludes drinks)

3 night Value Add

Valid from 1 January - 20 December

Book 3 consecutive nights stay per person and guests will receive :

- Complimentary 3-course dinner at The Cassia Restaurant (excludes drinks).
- Complimentary 3-course dinner at The Palm River Hotel with return transfers (excludes drinks).

All Value Adds are subject to availability

Not applicable to groups – FIT only – maximum 4 pax

Ilala Lodge Hotel reserves the right to amend the Value Add T&C's without notice



ADDITIONAL OFFERINGS

Group Booking Incentive

17th guest receives complimentary accommodation on a Bed and Breakfast Basis.

B&B per person, per night

US\$ NETT

Tour leader, Guide or Pilot*

131

* SUBJECT TO AVAILABILITY



W : www.ilalalodge.com

A : 441 Livingstone Way, Victoria Falls

T : +263 (0) 83 28 44737/8/9

Agent Portal : <https://www.ilalalodge.com/agents/> Password : IlalaAgents

MARKETING :

Caroline : marketing@ilalalodge.co.zw
marketing3@ilalalodge.co.zw

RESERVATIONS :

Manager : resman@ilalalodge.co.zw
reservations@ilalalodge.co.zw



ACTIVITIES, TOURS & TRANSFERS

LUXURY RIVER CRUISES

The luxury Ra-Ikane River Cruise entails a relaxing river venture on historic and intimate cruise boats, offering Breakfast, Birdwatching, Lunch and Sunset cruises on the Zambezi River.

The monohull design of the riverboats enables them to navigate further up the Zambezi River, through shallow river channels and closer to the wildlife on the river banks.

- Launch site located next to the Palm River Hotel
- Historically styled boat named after David Livingstone's guide, Ra-Ikane
- Offers panoramic views of the Upper Zambezi River and islands
- Maximum of 16 passengers
- Includes local drinks, snacks and return transfers

TRANSFERS & TOURS

Victoria Falls Rainforest Entrance Fees:

International	-	US\$50 per person per entrance
SADC	-	US\$30 per person per entrance
Zimbabwean	-	US\$7 per person per entrance

Ra Ikane River Cruise (per person)	US\$ RACK
Breakfast, Birdwatching or Lunch Cruises	85
Sunset Cruise	92

*rates are subject to third party changes.

Per person* (min 2 pax)	US\$ RACK
Victoria Falls Town to Victoria Falls Airport	17
Victoria Falls inter-hotel return transfer	9
Victoria Falls Town to Livingstone Town, Zambia	40
Victoria Falls Town to Kasane Town, Botswana	68
Victoria Falls Town to Hwange Main Gate (min 4 pax)	68
Guided Tour of the Victoria Falls Rainforest	25

*rates are subject to third party changes.





ILALA LODGE HOTEL RATES 2024

VALID 1st APRIL 2024 - 31st MARCH 2025

INTERNATIONAL RACK

TERMS & CONDITIONS

BOOKING POLICY

- Rooms will be held until 18:00 hrs. After which, rooms will automatically be released unless hotel is informed of late arrivals
- Guests are required to present proof of payment where relevant upon arrival. This can be in printed or digital format.
- Additional requests or extras must be paid for direct at checkout.
- The hotel will invoice at the rack rate, inclusive of 15% VAT and 2% Government Tourism Levy.
- Children's rate has been indicated on the rates sheets
- Children under the age of 4 will be accommodated free of charge when sharing a room with their parents or other paying guests
- The hotel reserves the right to amend the above rates in-line with any government statutory increases

FIT CANCELLATION POLICY

- A 20% non-refundable deposit must be made within 30 days from the date of placing the booking
- The balance must be made on or before 60 days prior to travel date
- If the booking is within 60 days of travel full payment is required

Cancellation Fees

- Bookings made within 30 days or less of arrival – 100% cancellation fee
- 60 – 30 days – 50% cancellation fee
- More than 60 days – 20% non-refundable deposit retained
- The above percentages are based on the total value of the amount shown on invoice

GROUPS CANCELLATION POLICY

- Applicable to groups of 16 or more paying guests
- A 20% non-refundable deposit must be made within 30 days from the date of placing the booking
- The balance must be made on or before 60 days prior to travel date
- If the booking is within 60 days of travel full payment is required

Cancellation Fees

- Bookings made within 30 days or less of arrival – 100% cancellation fee
- 60 – 30 days – 50% cancellation fee
- More than 60 days – 20% non-refundable deposit retained
- The above percentages are based on the total value of the amount shown on invoice



W : www.ilalalodge.com

A : 441 Livingstone Way, Victoria Falls

T : +263 (0) 83 28 44737/8/9

Agent Portal : <https://www.ilalalodge.com/agents/> Password : IlalaAgents

MARKETING :

Caroline : marketing@ilalalodge.co.zw
marketing3@ilalalodge.co.zw

RESERVATIONS :

Manager : resman@ilalalodge.co.zw
reservations@ilalalodge.co.zw

