



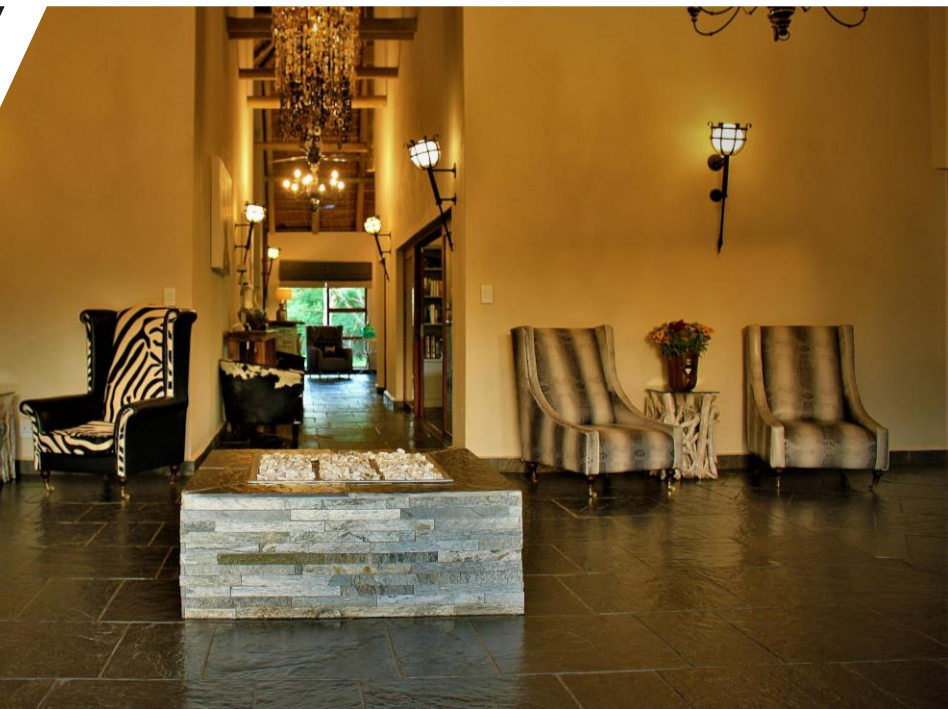
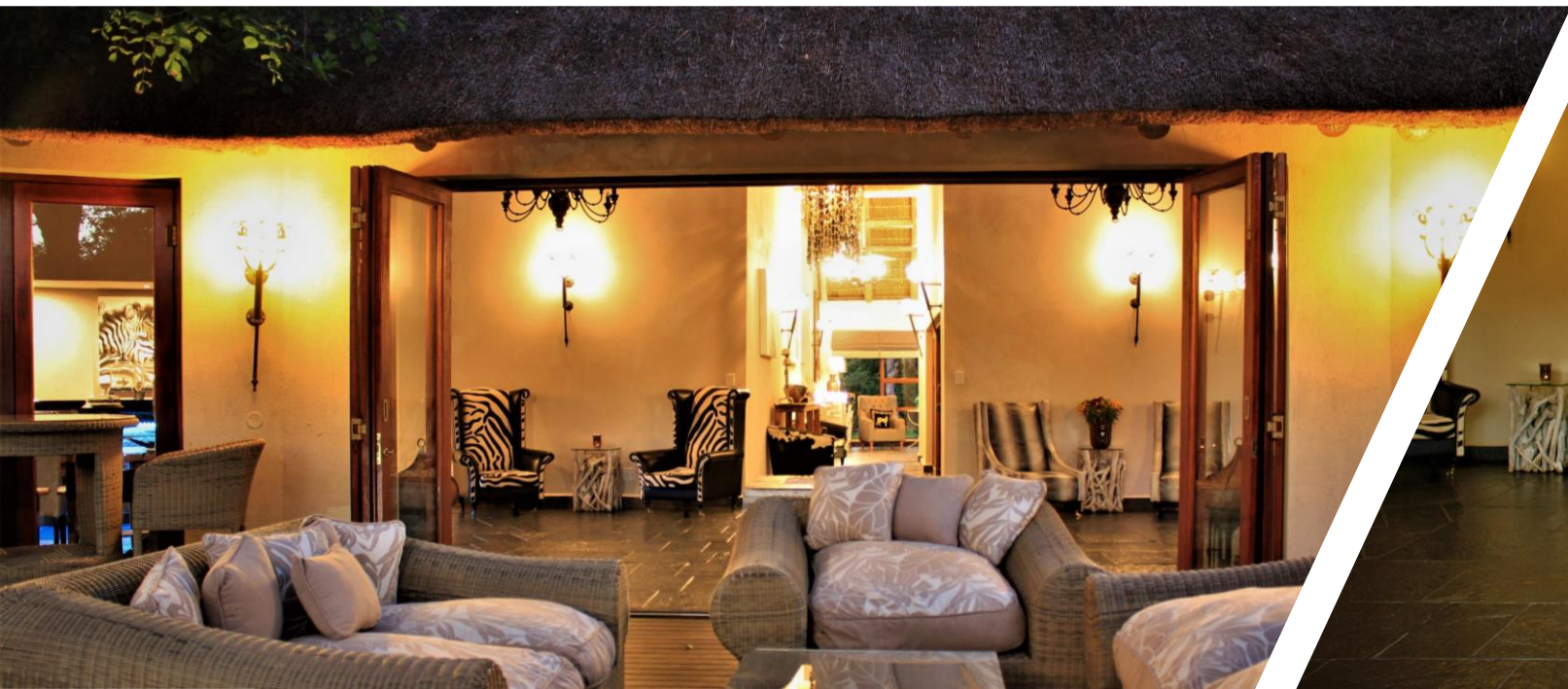
**Kusudalweni**  
*Safari Lodge & Spa*

# Information Pack

## LOCATION

Kusudalweni Safari Lodge & Spa sits at the heart of the **Guernsey Private Nature Reserve**, a stretch of protected land within the world-renowned **Greater Kruger National Park** eco system and is home to an astonishing array of fauna, flora, numerous bird species as well as buffalo, giraffe, zebra, various antelope and much more.







## LODGE

- Kusudalweni Safari Lodge & Spa was designed and built with one vision in mind: to provide guests with an authentic African safari experience during sheer luxury.
- At **our 5\*(Star)** lodge we **have 4 luxurious detached thatched chalets**, set individually at the end of meandering walkways that link to the Main Lodge.
- The Main Lodge is a spacious structure of warm, natural wood and thatch with ample verandas that wrap around our **various dining and entertainment areas**. Here you will find a crystal-clear swimming pool, restaurant, curio shop, communal lounges and bar.
- Stroll from your private luxury chalet down the meandering wooden walkways to enjoy a **relaxing drink beside the pool** as the heat of the day settles on the bushveld soil and take a moment to take in the stark beauty of the African continent. Alternatively, get comfortable in the lounge and take advantage of the complimentary Wi-Fi or learn more about the wonders of Africa in our well stocked library.

## ROOMS

Each room includes:

- Tea/Coffee station
- Personal safe
- Stocked mini bar fridge
- Indoor & outdoor shower
- Extra-large comfortable beds with luxury bedding
- Suspended mosquito nets give the true feel of African chic
- Hairdryer
- Wi-Fi
- Airconditioning & ceiling fan
- Free standing bathtub, concertina doors that can be opened to make you feel like you're bathing in the bush
- Spacious wooden deck with plunge pool/jacuzzi





## ACTIVITIES

- Morning, evening, nighttime and full day safaris are available. Our nature guide and tracker know the different reserves in the area like the back of their hand, and will confer to read the tracks, sounds and sights of the veld to find the hidden areas where the animals congregate.
- Each day is different and, depending on the weather, time of year, herd behavior and various other factors you may encounter lion, cheetah, wild dog, hippo, crocodile, rhino, a variety of plains game and more.
- There is also ample other activities in the surrounding area to explore. These include Jessica the hippo, Blyde canyon and more.

### ACTIVITIES AVAILABLE TO CHOOSE FROM

\*Activities should be booked in advance when the reservation is made to ensure availability

Activity	Time	Rate- Per person
Manyeleti Game Reserve Morning Drive	05:00AM – 10:00AM	R1155.00
Manyeleti Game Reserve Afternoon Drive	14:00PM – 19:00PM	R1150.00
Kruger Nation Park – Full day trip	05:00AM – 17:00PM	R2145.00
Kruger National Park – Half Day	05:00AM – 12:00PM	R1070.00
Buffalo Camp Big 3 game drive	14:00PM – 19:00PM	R950.00
Moholoholo Wildlife Rehabilitation Centre	08:30AM – 12:30PM Or 14:00PM – 18:00PM	R935.00
Jessica Hippo & Blyde Dam boat tour & Hoedspruit Endangered Species Centre (Full Day Trip)	08:00AM – 18:00PM	R2035.00
Blyde Dam boat tour	Time vary through the year	R935.00
Panorama Route Day Trip (Full day trip)	08:00AM – 18:00PM	R2035.00
Bush Walk on Great Kruger Conservancy	06:00AM – 08:00AM	R495.00
Sunset Drive on Great Kruger Conservancy	17:30PM – 19:00PM	R605.00
Night Drive on Great Kruger Conservancy	20:15PM – 21:45PM	R605.00







## **MEALS**

- Meals at Kusudalweni are a relaxed affair, tailored to your individual requirements. Lunch is long, lazy and delicious and you can choose to enjoy a special high tea in true Colonial tradition.
- Come dinner time you are again spoiled for choice. Our restaurant prepares a feast that can be served in the thatched dining area, on the open decking or around the campfire in our open-air boma.
- Settle in for the evening while our chefs prepare delicious dishes to tempt your taste buds. Afterwards while away the evening, enjoying drinks and catching up on the day's adventures with your fellow travellers.

## **WELLNESS TREATMENTS**

Matsimela have created a unique and ever evolving product range that incorporates the finest ingredients selected for their beneficial properties.

We offer the following services:

- Full body massage
- Cleansing and relaxing back treatment
- Body exfoliation
- Mud and clay wraps
- Body butter wraps
- Time out facial





## CONTACT INFO:

Kusudalweni Safari Lodge & Spa  
Portion 143 of the Farm Guernsey

81 KU, Hoedspruit, Limpopo

GPS: 24°20'46.1"S 30°58'23.9"E

[www.kusudalweni.co.za](http://www.kusudalweni.co.za)

Reservations: +27 (0)63 302 5358