

# INYATI GAME LODGE

*Sabi Sand Nature Reserve*



**INYATI**  
*Private Game Reserve*

**The Sabi Sand Nature Reserve boasts an impressive density of freely roaming wildlife per hectare in Africa.**



**Fortunately, Inyati Game Lodge offers a prime vantage point to witness this captivating natural spectacle up close!**





THE MAIN LODGE OVERLOOKS  
THE PERENNIAL SAND RIVER





A wooden viewing deck is situated on the banks of the Sand River. The deck is furnished with green cushioned chairs and a small table with refreshments. Large, leafy trees provide shade and a natural backdrop. The river flows through the landscape, and the sky is clear and blue.

LODGE VIEWING DECK – ON  
THE BANKS OF THE SAND RIVER

GREAT SPOT TO NETWORK IN NATURE  
AND FOR THAT YOGA RETREAT!



FAMILY CHALET: 12<sup>+</sup>  
KING BED AND TWO SINGLE BEDS



INYATI HAS 11 ROOMS  
THREE (3) FAMILY CHALETS &  
EIGHT (8) STANDARD CHALETS





# FAMILY CHALET: 12<sup>+</sup> KING BED AND TWO SINGLE BEDS



- 
- 
- 
- 





# STANDARD CHALET: KING BED / TWIN BEDS & OUTDOOR SHOWER



Free WiFi





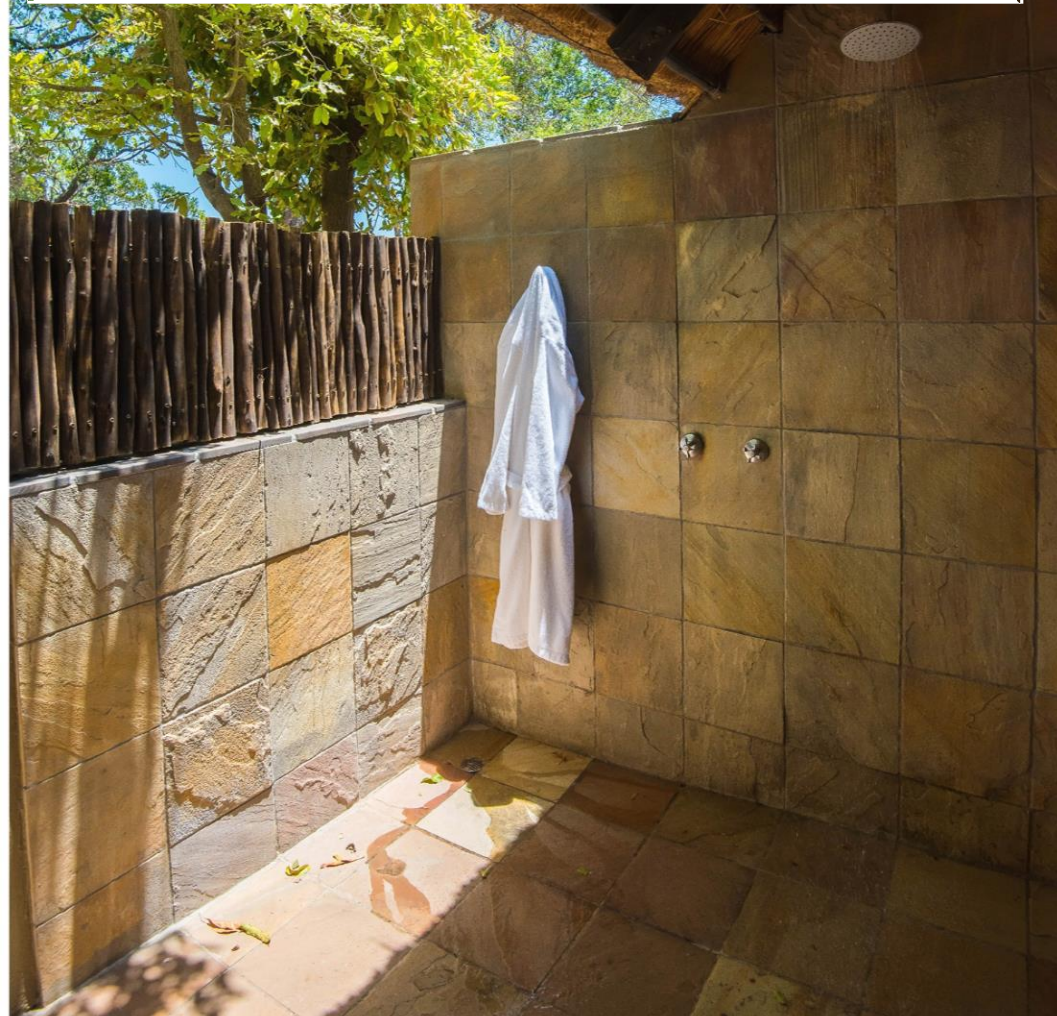
# STANDARD CHALET KING BED







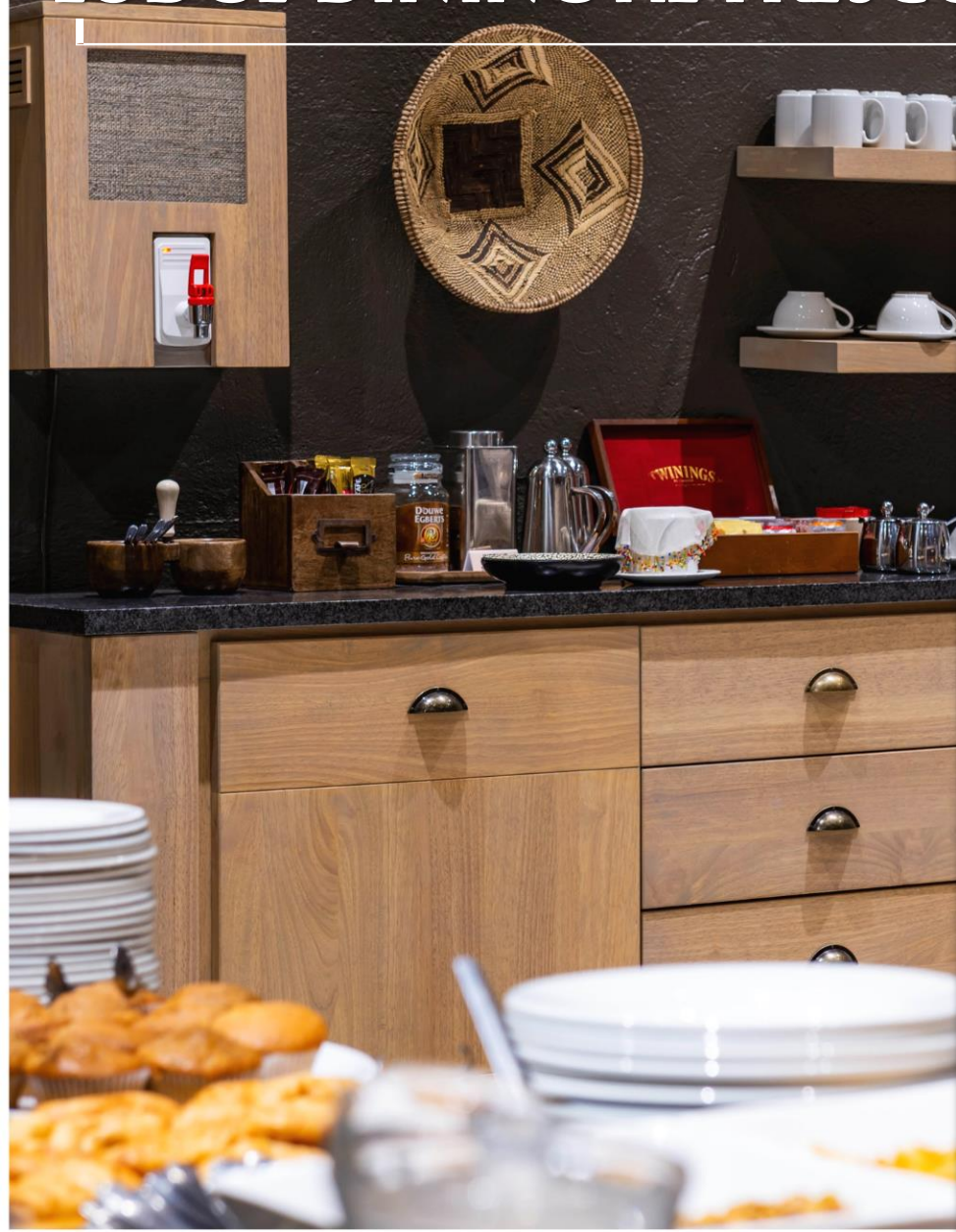
**Outdoor shower**  
Wonderful way to clean  
up your act in the bush ...



**En-suite bathroom**



# LODGE DINING AL FRESCO





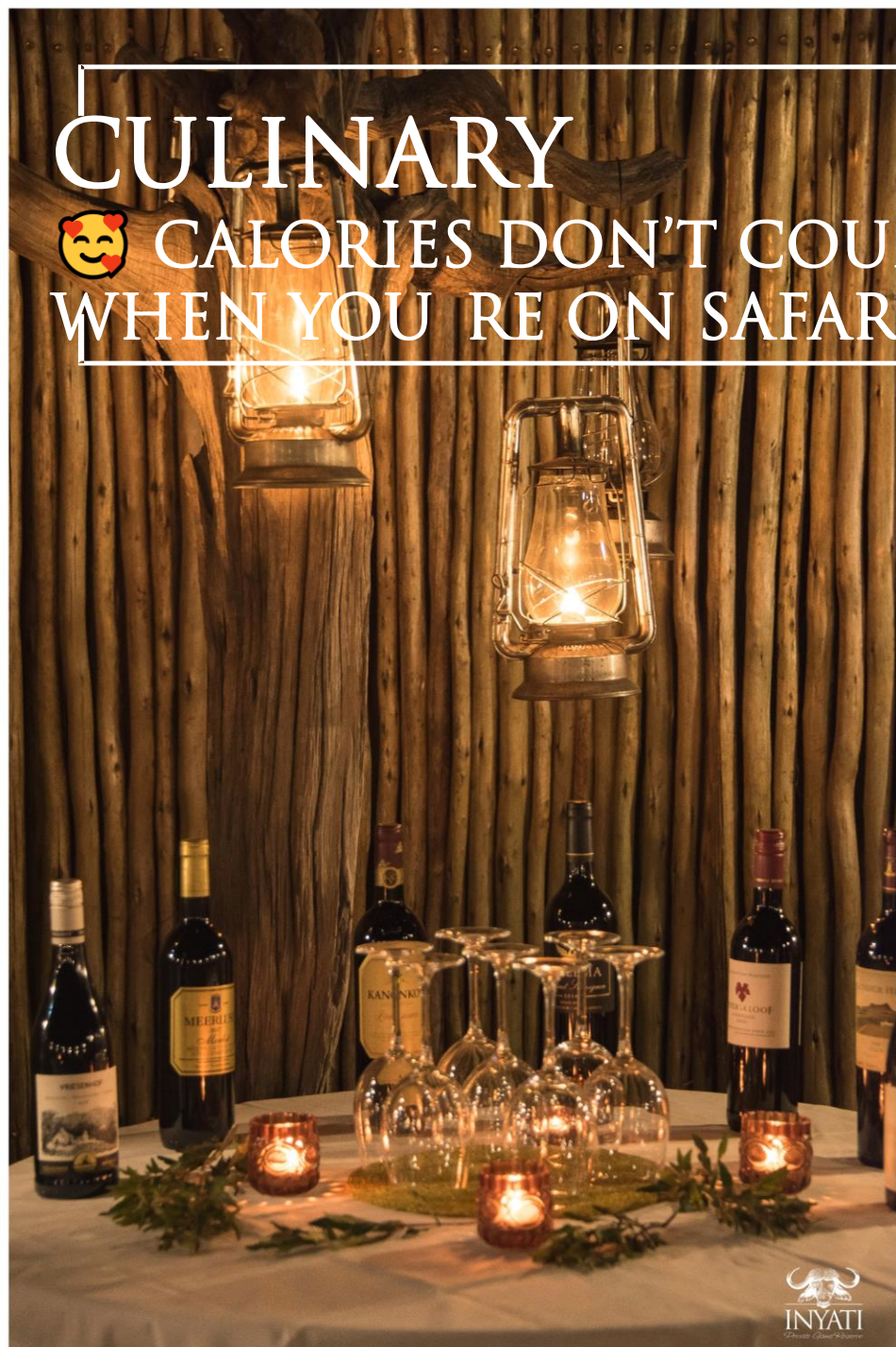
CULINARY  
CALORIES DON'T COUNT  
WHEN YOU'RE ON SAFARI 😊





# CULINARY

😊 CALORIES DON'T COUNT  
WHEN YOU'RE ON SAFARI!





# CULINARY TRADITIONAL BOMA DINNER





SAFARI SUNDOWNER 🍷  
SIMPLY AFRICAN HAPPY HOUR





# OPEN VEHICLE SAFARIS







LION  
(*PANTHERA LEO*)



AFRICAN BUSH ELEPHANT  
(*LOXODONTA AFRICANA*)





CAPE BUFFALO  
(*SYNCERUS CAFFER*)





NOBODY NEEDS A RHINO  
HORN, EXCEPT A RHINO!





LEOPARD  
(*PANTHERA PARDUS*)





WILD DOG  
*PAINTED PREDATOR*





CHEETAH  
(*ACINONYX JUBATUS*)





BUSH WALK...WE'RE TALKING ABOUT  
TAKING A SHORT STROLL UP-CLOSE  
WITH NATURE.



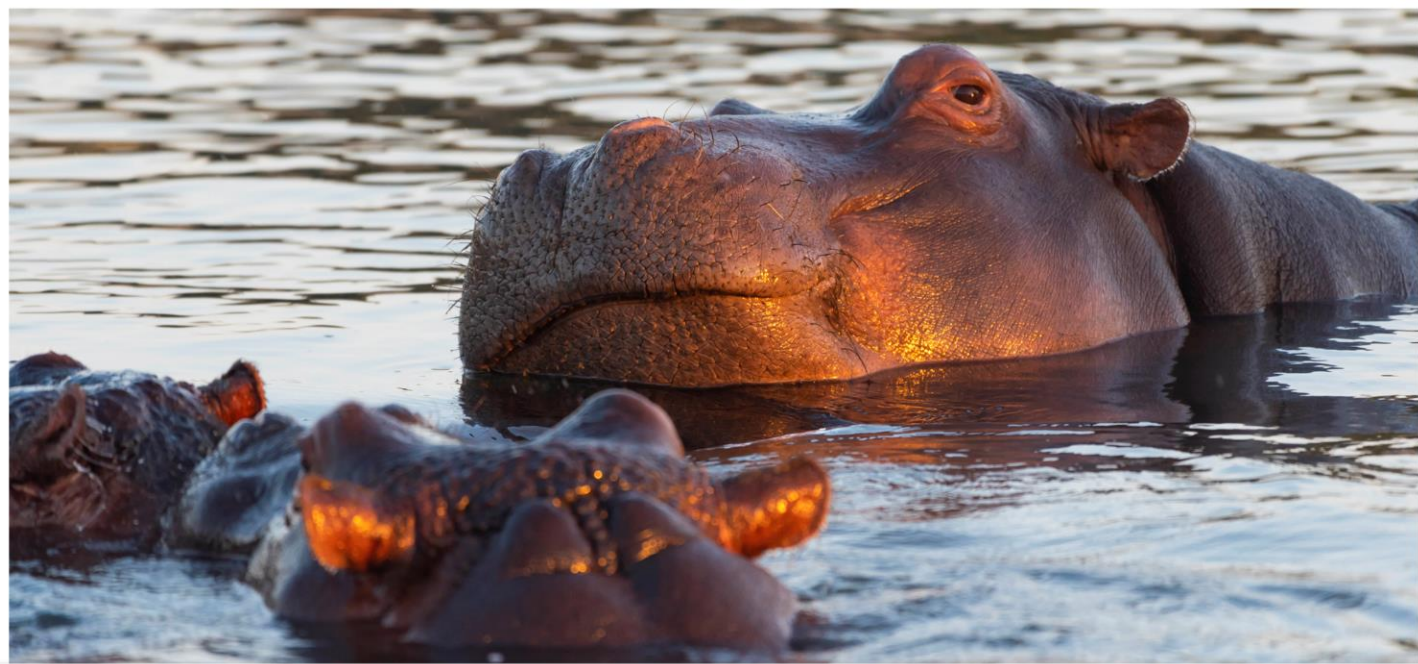
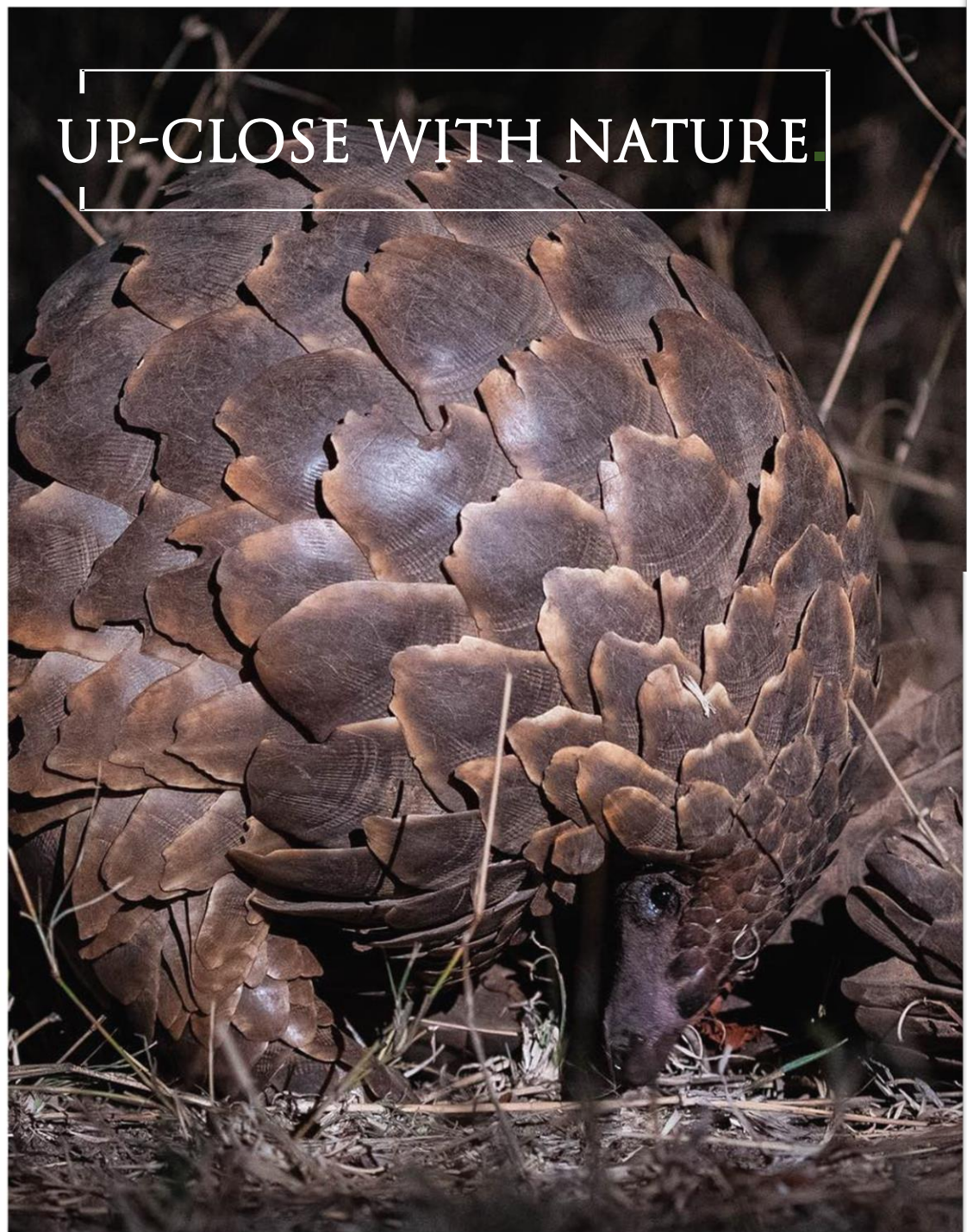


# SHADY HIDEAWAYS



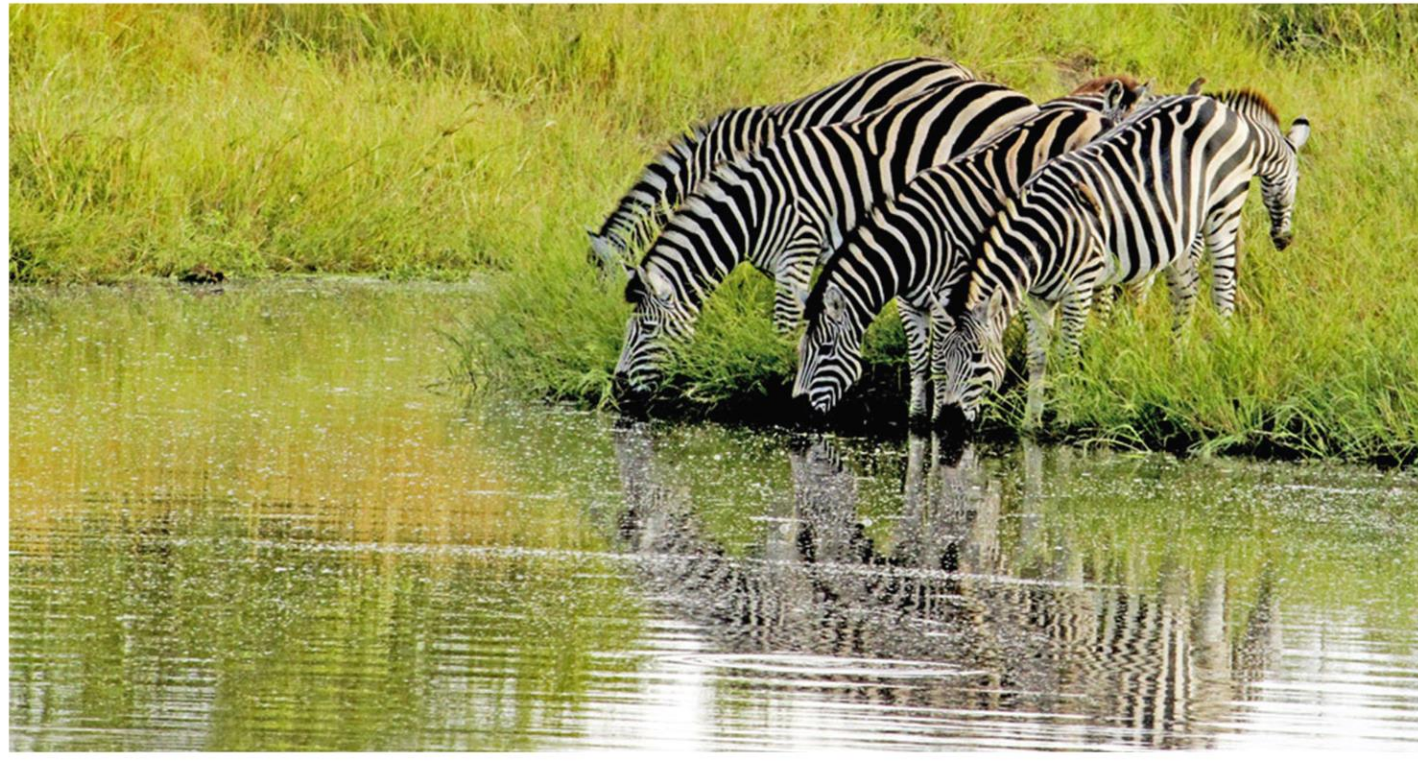
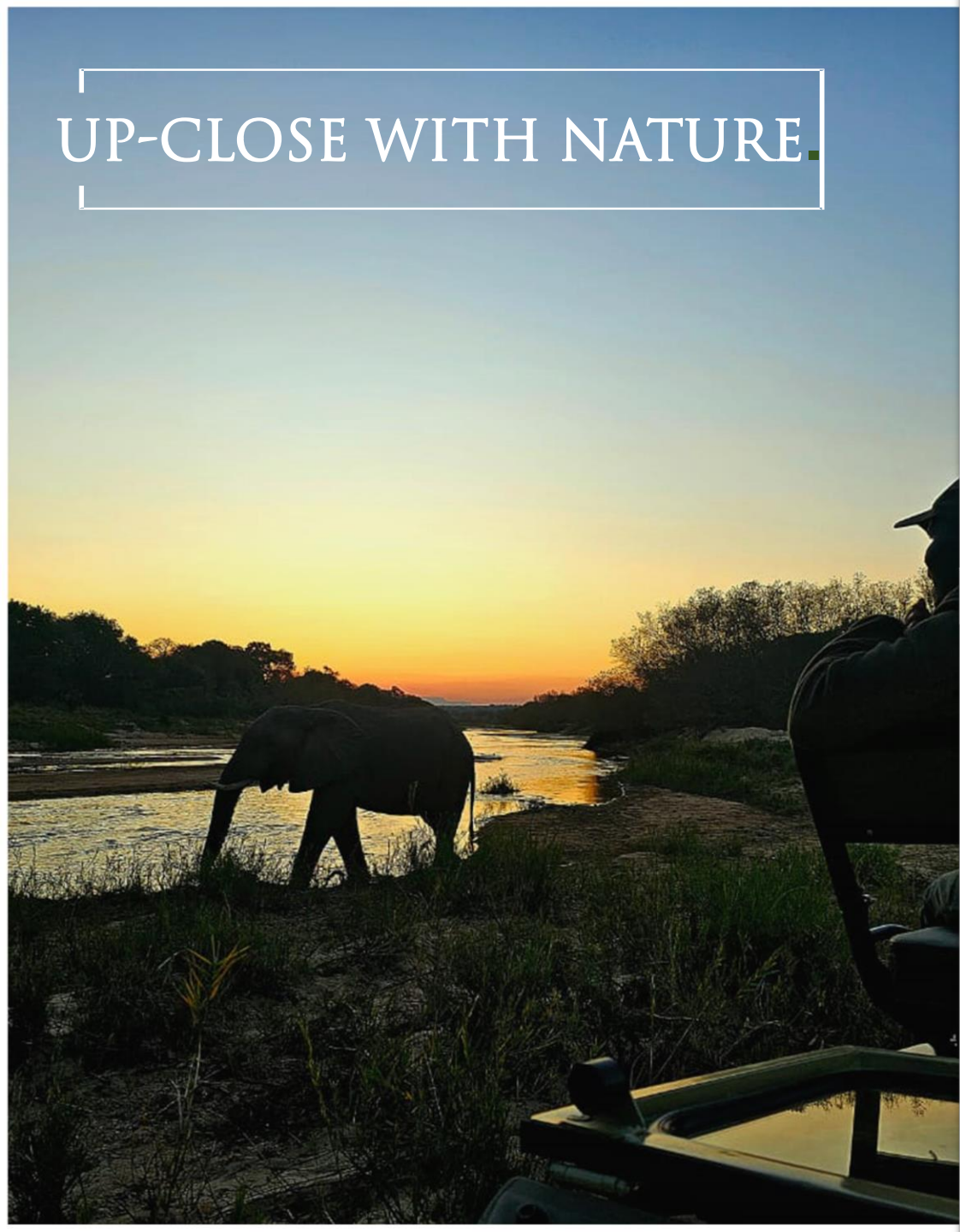


UP-CLOSE WITH NATURE





# UP-CLOSE WITH NATURE.





WITH MORE THAN 300 BIRD SPECIES ON ITS LIST, SABI SANDS IS A GREAT BIRDING DESTINATION.







# WE ARE GONE EVEN GREENER.

**In a commitment to reduce its ecological footprint, Inyati Game Lodge has recently completed the installation of a robust solar power system, which now supplies the entirety of its energy needs.**

All guest accommodations at Inyati now operate entirely off the grid, exclusively harnessing the power of solar energy to provide a dependable, renewable energy source. Guests who choose to stay at Inyati can take pride in knowing that their visit contributes to a more sustainable and eco-conscious travel experience.

#renewables #sustainabletravel #cleanenergy #solar 🌞 #solarpowersystem #solarpoweredsafaris 🐾

[www.inyati.co.za](http://www.inyati.co.za)





ZIMBABWE

BOTSWANA

MOZAMBIQUE



INYATI

← INYATI

LIMPOPO

GAUTENG

MPUMALANGA

SWAZILAND

NORTH WEST

FREE STATE

KWAZULU NATAL

LESOTHO

NORTHERN CAPE

ATLANTIC OCEAN

EASTERN CAPE

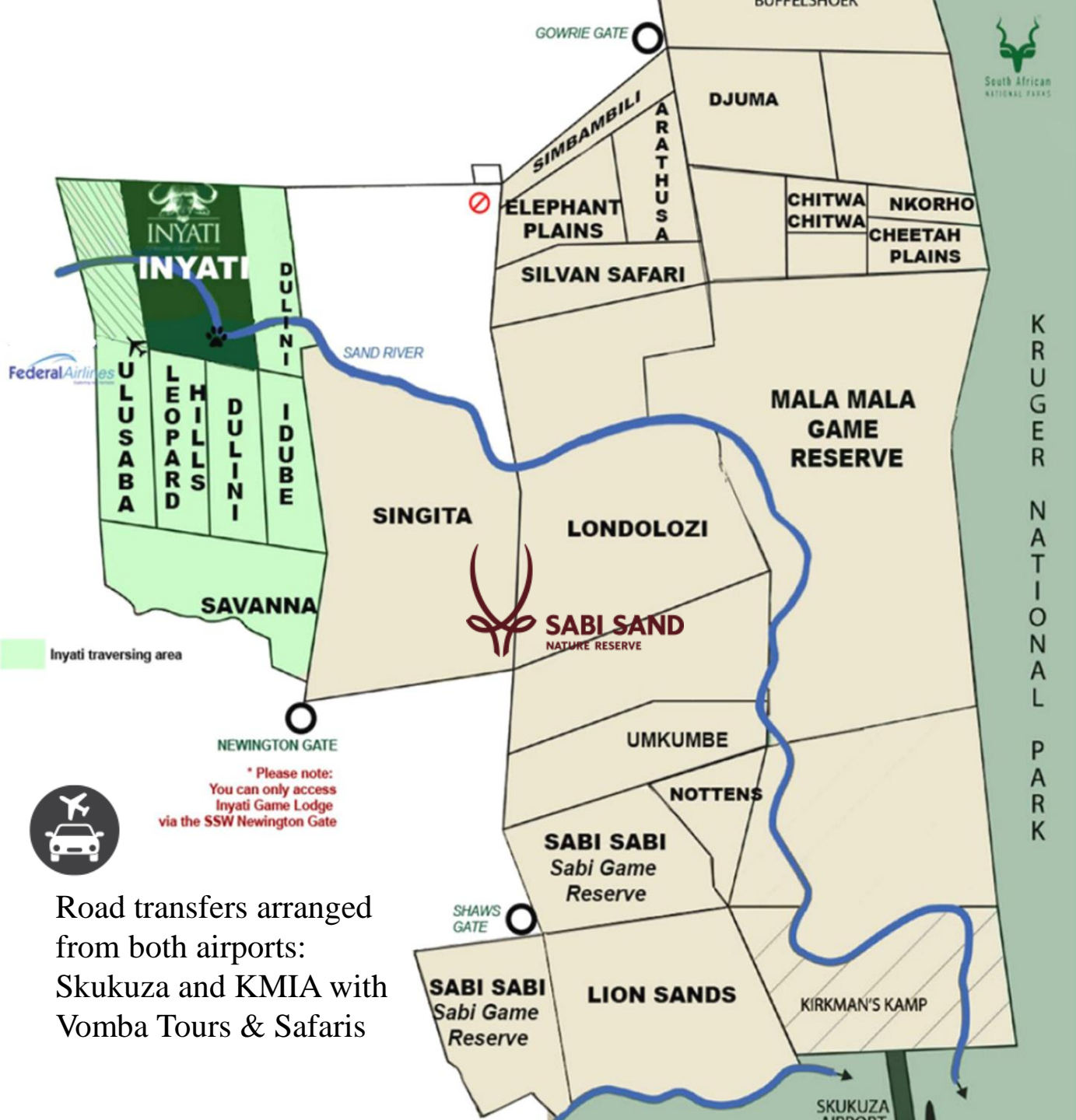
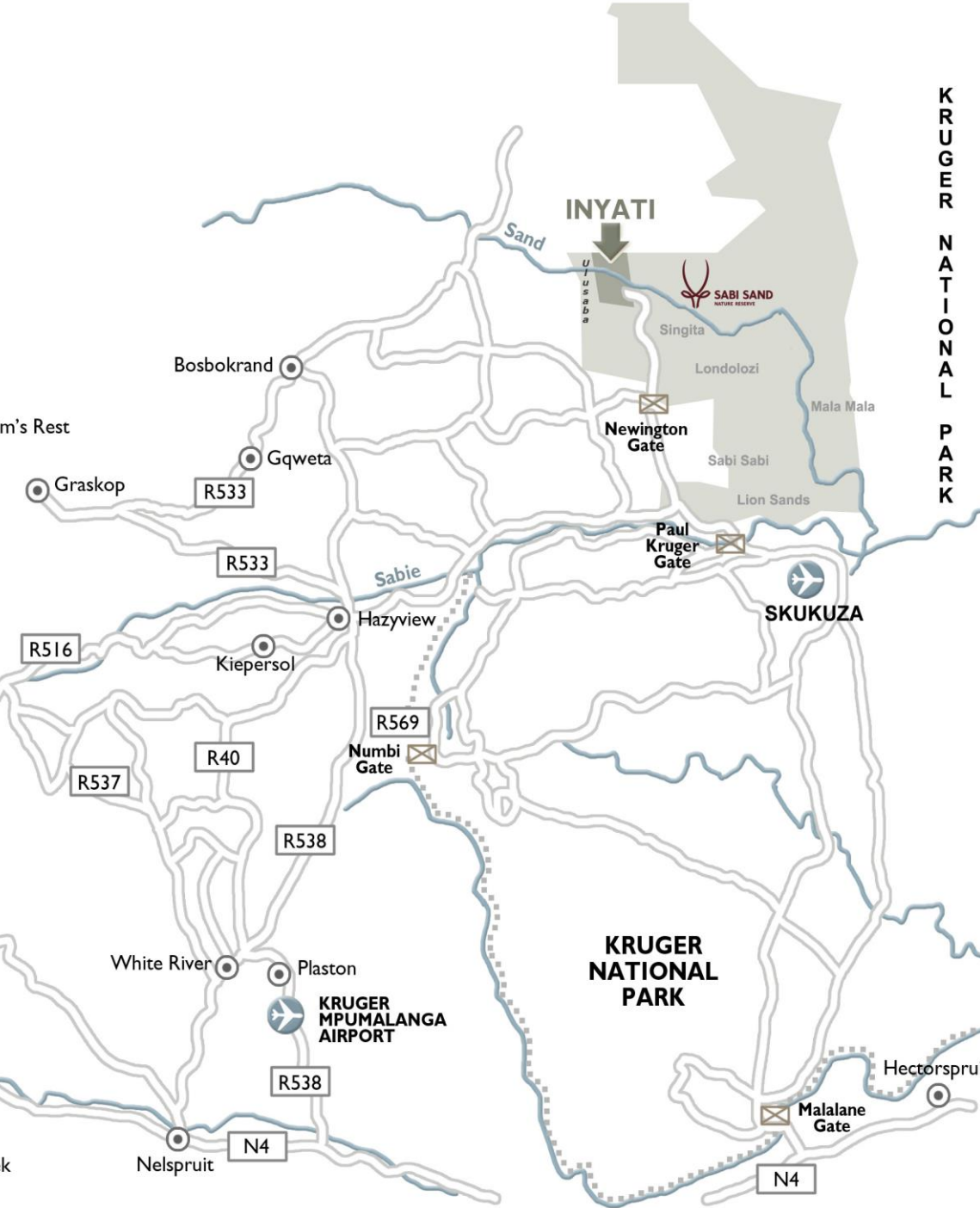
INDIAN OCEAN

WESTERN CAPE



NAMIBIA





Road transfers arranged from both airports: Skukuza and KMIA with Vomba Tours & Safaris



South African NATIONAL PARKS



# DAILY FLIGHTS TO THE FOLLOWING:

- (MQP) KMIA - Kruger Mpumalanga International – (Nelspruit - Kruger airport)
- (SZK) Skukuza
- (ULX) Ulusaba airstrip with Federal Air



## Kruger Mpumalanga International / Nelspruit (MQP)



Cape Town (CPT) , Durban (DUR),  
Johannesburg (JNB), Livingstone (LVI),  
Vilanculos (VNX)



New: **Twice weekly** - Cape Town Int.  
Airport (CPT) to Kruger Mpumalanga Int.  
Airport (MQP) – Tuesday & Saturday



Victoria Falls International Airport (VFA)

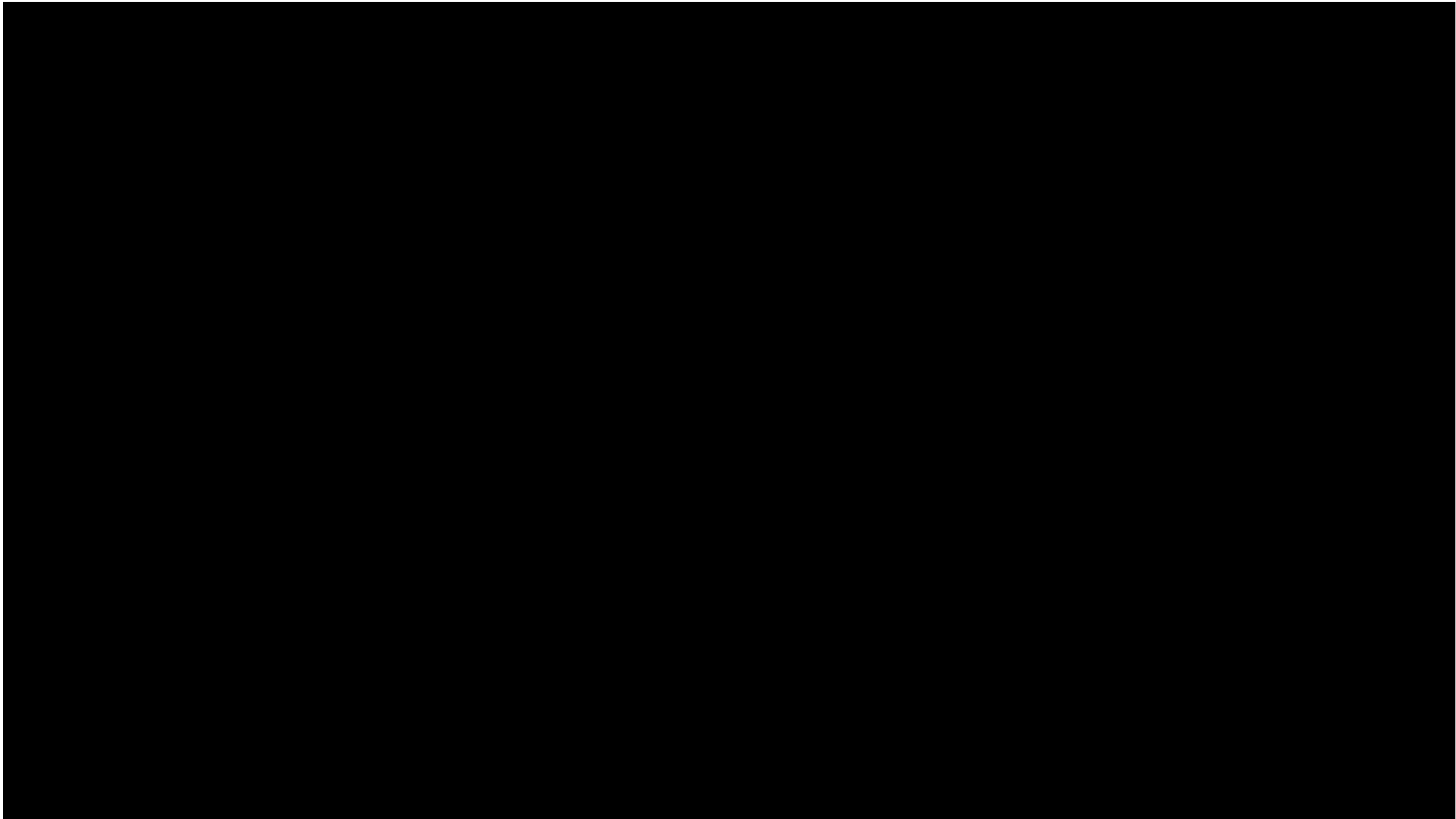




**GWF** Good Work Foundation  
Access to World-Class Education

**We challenge HOW we learn, WHAT we learn, and WHO has access to learning. Throughout the pandemic, Inyati has continued to support critical community and conservation projects including the Good Work Foundation digital learning campus in Dumphries village.**









**MARKETING AND RESERVATIONS OFFICE**

Tel: +27 11 486 2027 ✉ [res@inyati.co.za](mailto:res@inyati.co.za) / [marketing@inyati.co.za](mailto:marketing@inyati.co.za) 🌐 [www.inyati.co.za](http://www.inyati.co.za)

**INYATI GAME LODGE**

Sabi Sand Nature Reserve, Mpumalanga

Tel: +27 13 735-5125 Lodge AH Mobile: +27 (0) 82 807 9153 ✉ [reception@inyati.co.za](mailto:reception@inyati.co.za)