

INYATI GAME LODGE

Sabi Sand Nature Reserve



INYATI
Private Game Reserve

The Sabi Sand Nature Reserve boasts an impressive density of freely roaming wildlife per hectare in Africa.



Fortunately, Inyati Game Lodge offers a prime vantage point to witness this captivating natural spectacle up close!



THE MAIN LODGE OVERLOOKS
THE PERENNIAL SAND RIVER



A wooden viewing deck is situated on the banks of the Sand River. The deck is furnished with green cushioned chairs and a small table with refreshments. Large, leafy trees provide shade and a natural backdrop. The river flows through the landscape, and the sky is clear and blue.

LODGE VIEWING DECK – ON
THE BANKS OF THE SAND RIVER

GREAT SPOT TO NETWORK IN NATURE
AND FOR THAT YOGA RETREAT!

FAMILY CHALET: KING BED AND TWO SINGLE BEDS



INYATI HAS 11 ROOMS:
3 FAMILY CHALETs & 8 STANDARD CHALETs



STANDARD CHALET: KING BED / TWIN BEDS & OUTDOOR SHOWER



Free WiFi



STANDARD CHALET KING BED





Outdoor shower
Wonderful way to clean
up your act in the bush ...



En-suite bathroom

LODGE DINING AL FRESCO



EXCELLENT GAME VIEWING AND HOME-GROWN HOSPITALITY



CULINARY
CALORIES DON T COUNT
WHEN YOU RE ON SAFARI



CULINARY

😊 CALORIES DON'T COUNT
WHEN YOU'RE ON SAFARI!



CULINARY TRADITIONAL BOMA DINNER



SAFARI SUNDOWNER 🍷
SIMPLY AFRICAN HAPPY HOUR



OPEN VEHICLE SAFARIS





LION
(*PANTHERA LEO*)

AFRICAN BUSH ELEPHANT
(*LOXODONTA AFRICANA*)



CAPE BUFFALO
(*SYNCERUS CAFFER*)



NOBODY NEEDS A RHINO
HORN, EXCEPT A RHINO!



LEOPARD
(*PANTHERA PARDUS*)



WILD DOG
PAINTED PREDATOR



CHEETAH
(*ACINONYX JUBATUS*)



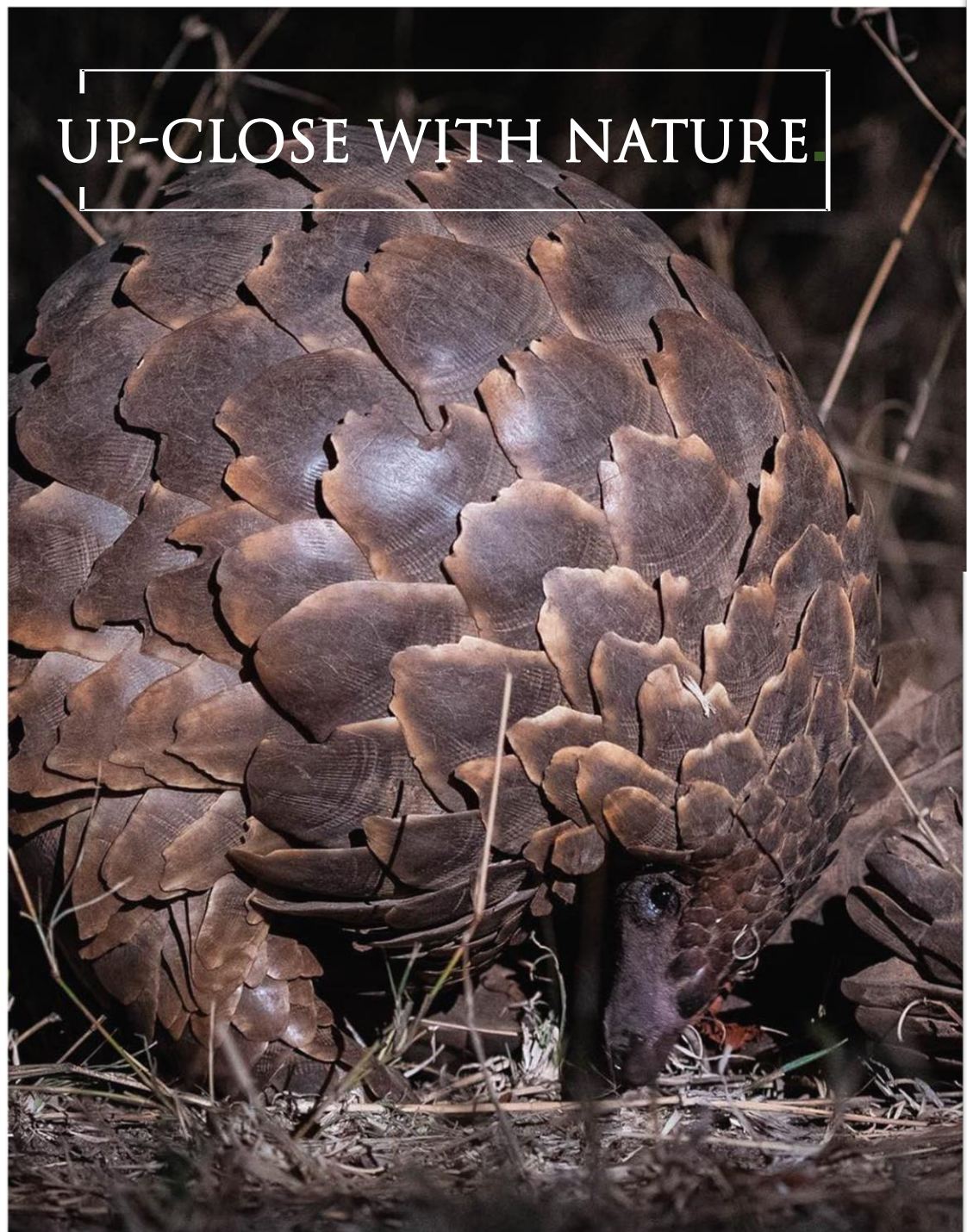
BUSH WALK...WE'RE TALKING ABOUT
TAKING A SHORT STROLL UP-CLOSE
WITH NATURE.



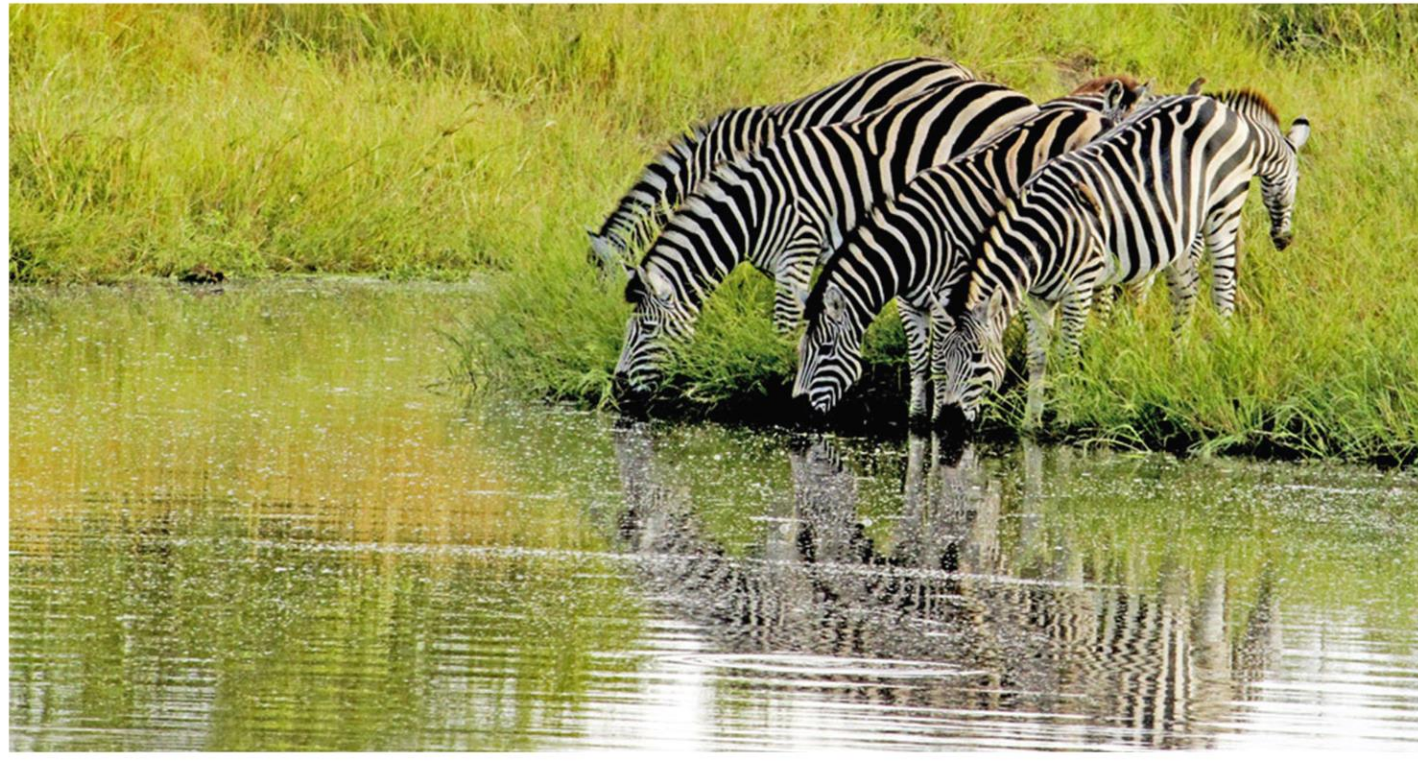
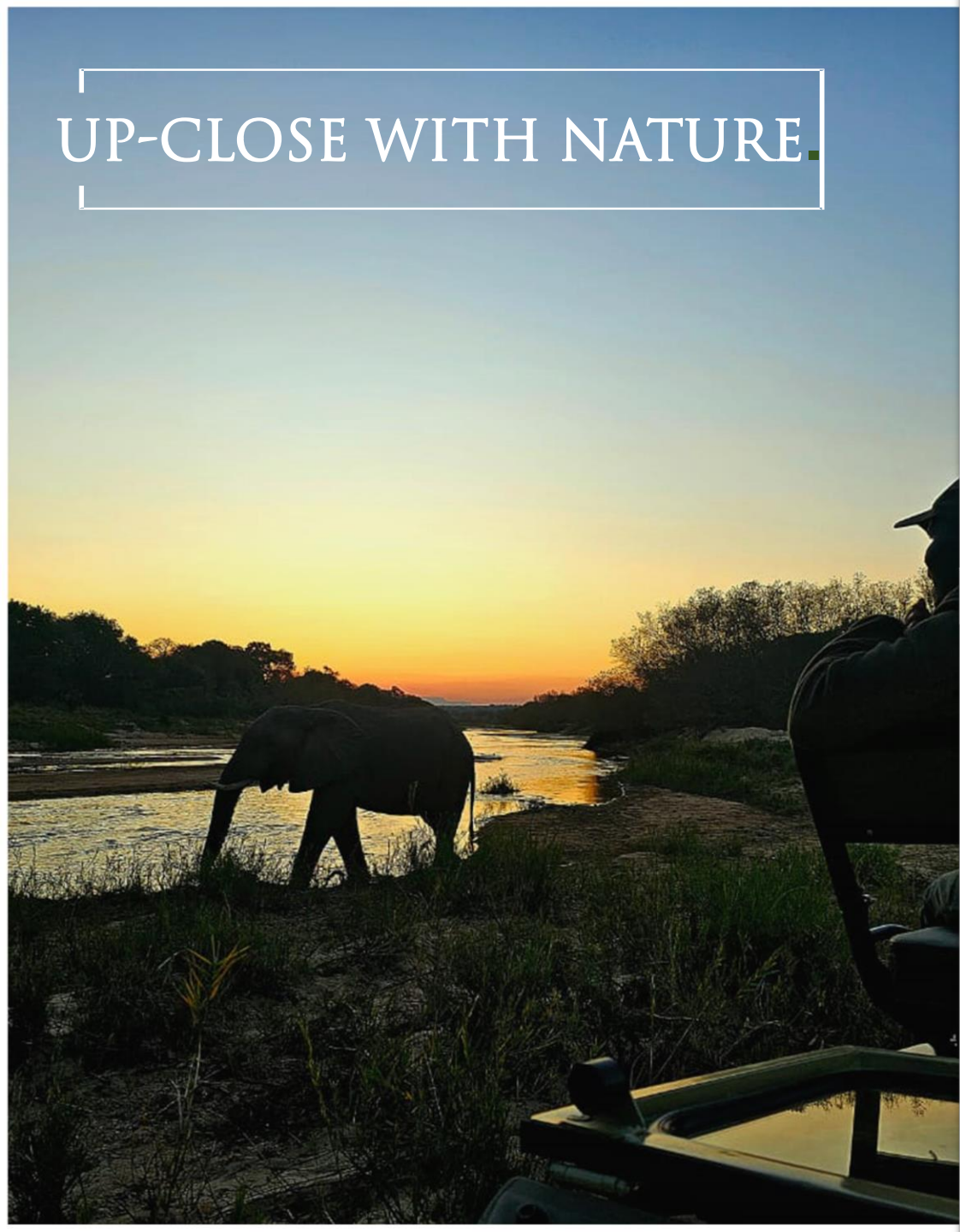
SHADY HIDEAWAYS



UP-CLOSE WITH NATURE



UP-CLOSE WITH NATURE.



WITH MORE THAN 300 BIRD SPECIES ON ITS LIST, SABI SANDS IS A GREAT BIRDING DESTINATION.





WE ARE GONE EVEN GREENER.

In a commitment to reduce its ecological footprint, Inyati Game Lodge has recently completed the installation of a robust solar power system, which now supplies the entirety of its energy needs.

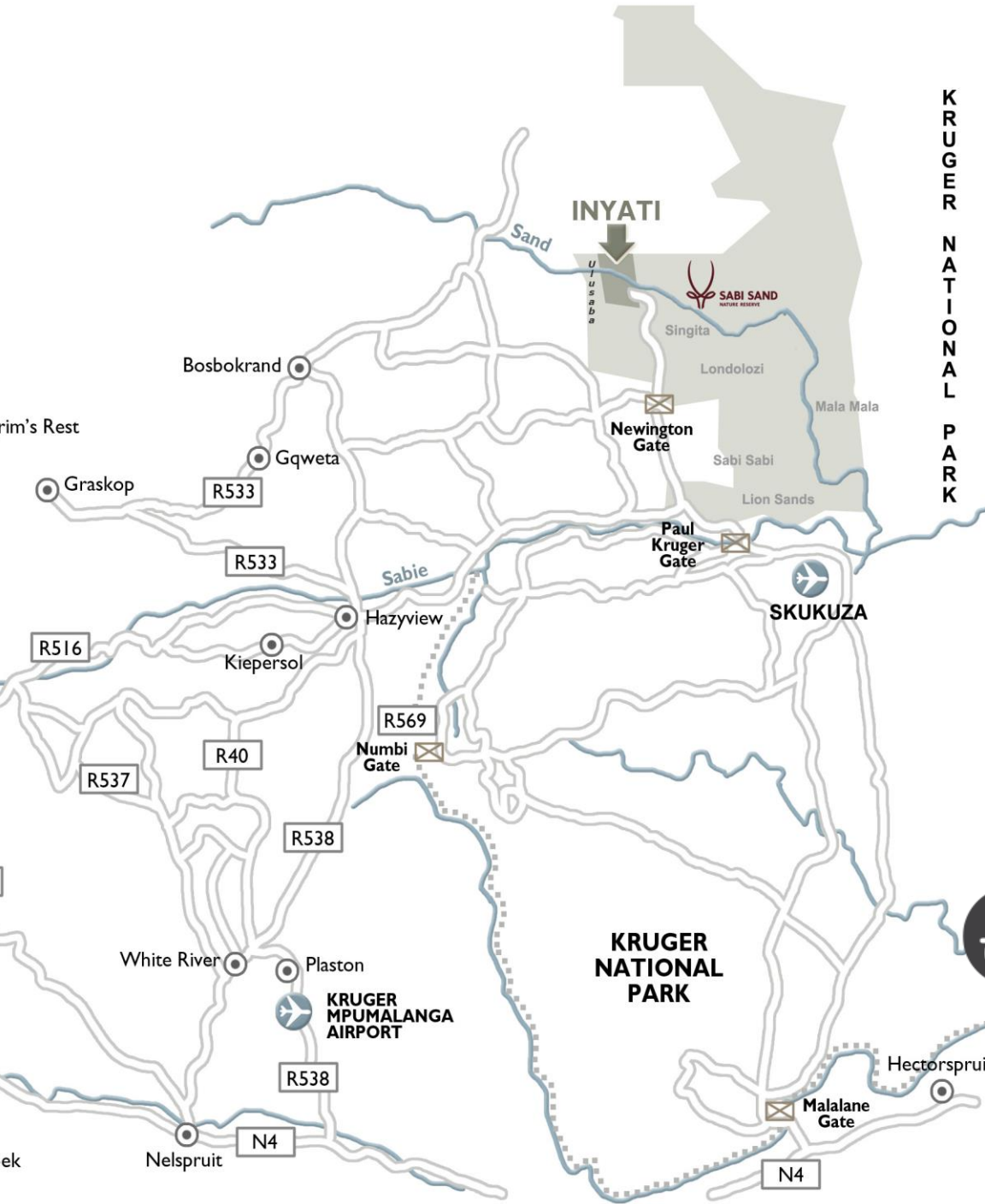
All guest accommodations at Inyati now operate entirely off the grid, exclusively harnessing the power of solar energy to provide a dependable, renewable energy source. Guests who choose to stay at Inyati can take pride in knowing that their visit contributes to a more sustainable and eco-conscious travel experience.

#renewables #sustainabletravel #cleanenergy #solar ☀️ #solarpowersystem #solarpoweredsafari 🐾

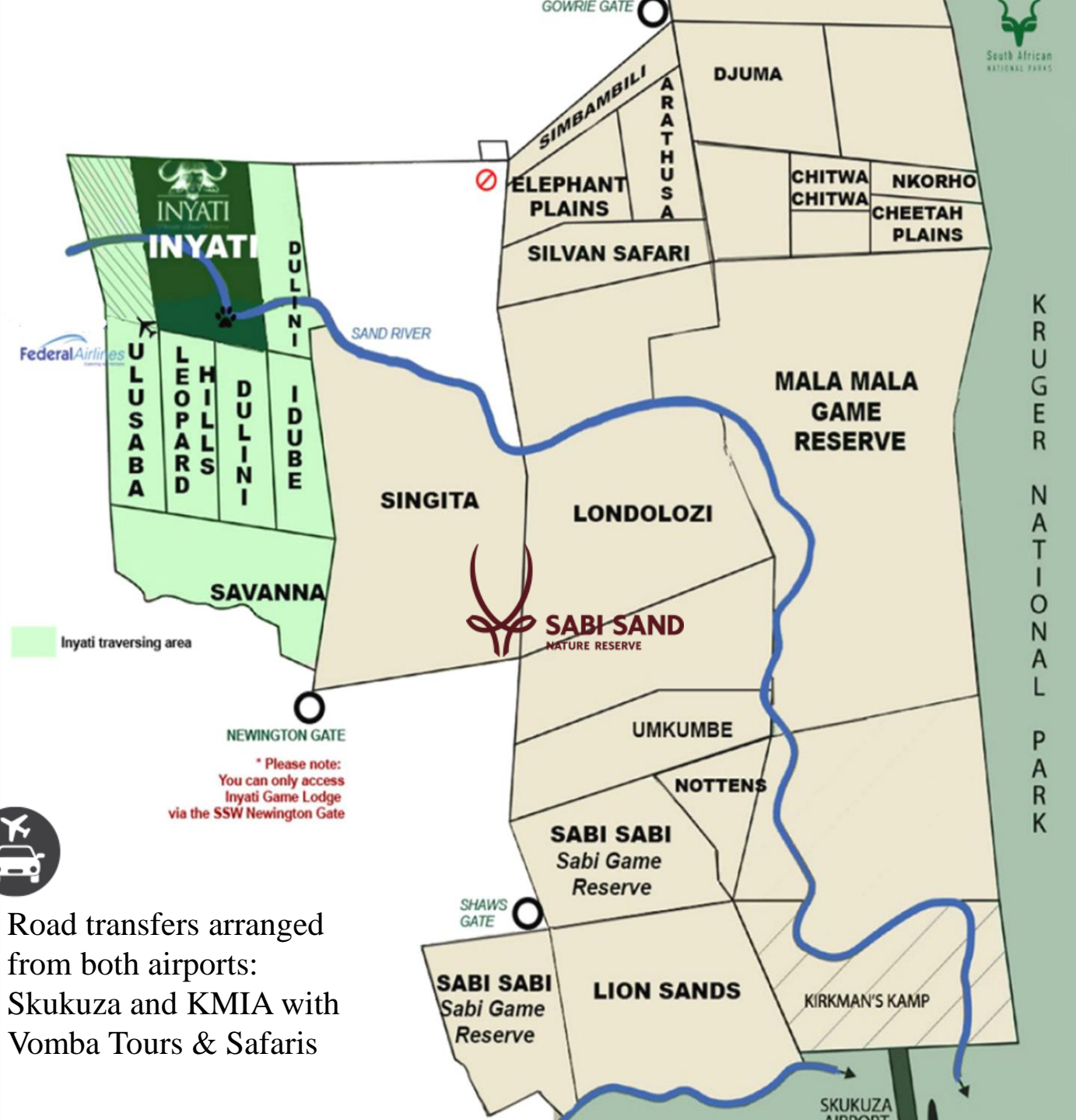
www.inyati.co.za




INYATI
Peace | Love | Culture



KRUGER NATIONAL PARK



* Please note:
You can only access
Inyati Game Lodge
via the SSW Newington Gate



Road transfers arranged from both airports: Skukuza and KMIA with Vomba Tours & Safaris

DAILY FLIGHTS TO THE FOLLOWING:

- (MQP) KMIA - Kruger Mpumalanga International – (Nelspruit - Kruger airport)
- (SZK) Skukuza
- (ULX) Ulusaba airstrip with Federal Air



Kruger Mpumalanga International / Nelspruit (MQP)



Cape Town (CPT) , Durban (DUR),
Johannesburg (JNB), Livingstone (LVI),
Vilanculos (VNX)



New: **Twice weekly** - Cape Town Int.
Airport (CPT) to Kruger Mpumalanga Int.
Airport (MQP) – Tuesday & Saturday

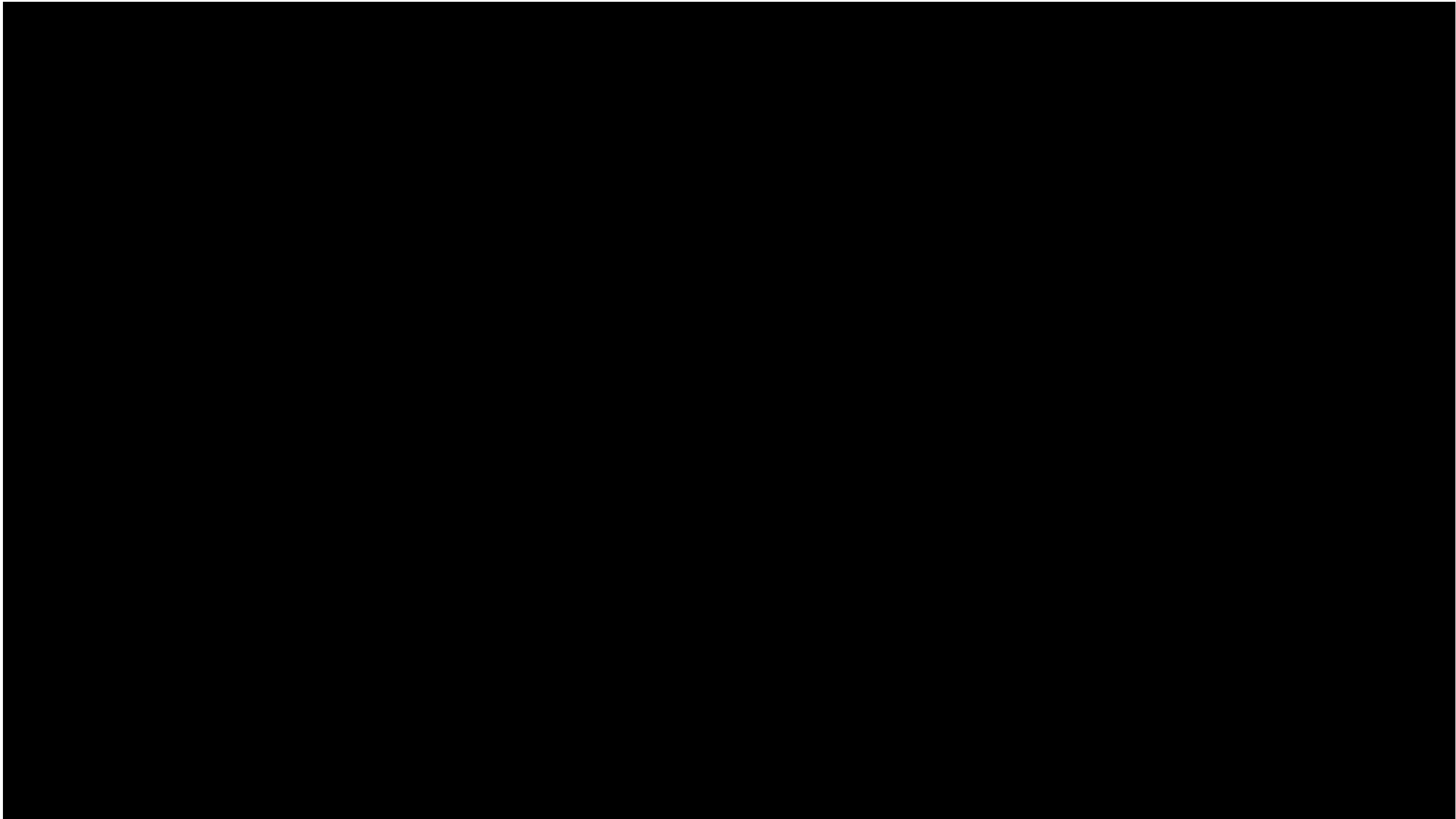


Victoria Falls International Airport (VFA)



GWF Good Work Foundation
Access to World-Class Education

We challenge HOW we learn, WHAT we learn, and WHO has access to learning. Throughout the pandemic, Inyati has continued to support critical community and conservation projects including the Good Work Foundation digital learning campus in Dumphries village.





MARKETING AND RESERVATIONS OFFICE

Tel: +27 11 486 2027 ✉ res@inyati.co.za / marketing@inyati.co.za 🌐 www.inyati.co.za

INYATI GAME LODGE

Sabi Sand Nature Reserve, Mpumalanga

Tel: +27 13 735-5125 Lodge AH Mobile: +27 (0) 82 807 9153 ✉ reception@inyati.co.za