



# BÖËNA

Wilderness Lodges

---

Monteverde Lodge





Monteverde Lodge and Gardens offers a sought-after location among hotels in Monteverde, Costa Rica. While our hotel is walking distance from downtown Monteverde, our setting feels like a natural oasis worlds apart from civilization. We offer 28 guest rooms framed by designer gardens and a private cloud forest reserve teeming with exotic local wildlife.

Monteverde Lodge and Gardens is part of the collection of Böëna Wilderness Lodges. Böëna a small chain of stunning hotels including Pacuare Lodge, on the banks of the rushing Pacuare River; Lapa Ríos Lodge, in the wilderness of the Osa Peninsula; Tortuga Lodge, amidst the canals of Tortuguero on the northern Caribbean coast; and Monteverde Lodge, in the heights of the cloud forests of Monteverde.



# Monteverde Lodge & Gardens

- Monteverde Lodge & Gardens is located in the Tilarán Mountain Range, about 15 minutes from the entrance to the Monteverde Cloud Forest and a ten-minute walk from the restaurants, bars and attractions of downtown Santa Elena.
- We have 28 **rooms**. 12 Forest View Downstairs, 12 Forest View Balcony, 3 Garden View and 1 Superior Garden View.
- All rooms have free wireless internet.
- All rooms do not have air conditioning or television, so you can appreciate the sounds of the tropical cloud forest.
- The service style is personalized, informal, caring.
- Our **food** is what Costa Rican grandmother would cook if she was also a creative and contemporary professional chef.
- The atmosphere in our lodge is quiet, laid back and tranquil with an open fireplace.
- Our bar serves up creative cocktails. Like the Jigüiro, with fresh guava juice, rum, triple sec and squeezed lemon.
- Suggested activities while you're at the lodge, explore the **gardens**, with La Posa de Doña Yolanda solar-heated pool, the main fern and bromeliad garden.
- Among the suggested **activities** in the area are hiking or bird watching with a naturalist guide, horseback riding, and zip-lining or hiking through the canopy.
- We suggest you spend between 2-4 nights with us.
- Our property of 6 hectares has self-guided trails.





# ROOMS







## Toucanet Downstairs Suites

The room has a direct access to the iconic Monteverde Lodge's highly praised Garden. These rooms face a wide-open area with a nicely manicured landscape. Our grounds are filled by the soothing sounds of nature, bird's songs, whispering wind on the swaying trees and moving water from a nearby creek decorated by a little cascade and a tranquil view of a fishpond in the woods. The Toucanet Downstairs Suites feature 1 king size bed and 1 sofa bed, or we can add 2 single twin beds instead of the sofa. Maximum occupancy is 2 adults and 2 children.





## Toucanet Downstairs Suites

**The room have:**

- 1 King Bed and one sofa bed
- In-Room Safe
- Hot water
- Hair dryer
- Vanity mirror
- AC
- Ceiling Fan
- Reading Lamps
- Free wireless internet
- Direct access to garden terrace







## Motmot Balcony Suites

Meet the inspiring Cloud Forest of Monteverde. You can enjoy the best of the privileged location of Monteverde Lodge from your own guest room's balcony. Take time to step outside into your balcony and enjoy the cloud forest symphony at dawn or dusk. The lodge was built within a thick forest property filled with emblematic trees of the highlands of our country, as well as native vegetation, cooling misty clouds, singing birds and the rumor of a nearby forest creek. The wind plays an important role in this natural theater while it crosses over mountains and valleys! Live the magic of our cloud forest from your cozy guest room while enjoying a cup of coffee or perhaps a glass of wine to celebrate the occasion. The Motmot Balcony Suites feature 1 king size bed or 2 queen size beds, and the maximum occupancy is 4 guests.







## Momot Balcony Suites

**All rooms have:**

- 2 Upstairs Rooms have 1 King Bed
- 10 Upstairs Rooms have 2 Full Beds
- Private balcony with a forest view
- Two wooden chairs and a coffee table
- In-room safe
- Hot water
- AC
- Ceiling Fan
- Reading Lamps
- Hair Dryer
- Laundry Bag
- Free wireless internet







## Mountain Gem Suites

Guests of the luxurious Mountain Gem Suites are privileged with a view of nature in its purest state. Each morning arrives with a spectacle of animal and bird activity that changes and evolves as the day progresses. These four exclusive suites are named after Monteverde's prolific Mountain Gem Hummingbirds, the largest and most brilliantly hued of the region's smallest winged inhabitants. The dazzling birds are known for their spirited antics and melodic duets during mating season.

The most luxurious suites in the Monteverde Lodge & Gardens Collection, each spacious suite is positioned for privacy and to best enjoy the dramatic forest views. Enjoy delightful pillowtop mattresses, decadent cushions, and the finest imported linens. Bright and beautiful oversize bathrooms feature solar-heated rain showers, naturally sourced amenities, and soft bathrobes. The suite's elegantly appointed has a wide, covered terrace outside.







## Mountain Gem Suites

**All rooms have:**

- A king size bed and extra twin beds for the 3rd or 4th person
- Naturally sourced luxurious amenities (body cream, shampoo, and conditioner)
- High-speeded Wi-Fi
- Laptop size safe
- Housekeeping
- Turndown Service
- Hairdryer

- AC
- Hot Water
- Bathrobes
- Wellies for hiking and exploration
- Walking sticks
- Laundry service (additional cost)







## Cotinga Suites

The rooms have a direct access to the iconic Monteverde Lodge Garden. These rooms face a wide-open area with a nicely manicured landscape. Our grounds are filled by the soothing sounds of nature, bird's songs, whispering wind on the swaying trees and moving water from a nearby creek decorated by a little cascade and a tranquil view of a fishpond in the woods. The Cotinga Suites feature 1 king size bed Maximum occupancy is 2 guests.

**All rooms have:**

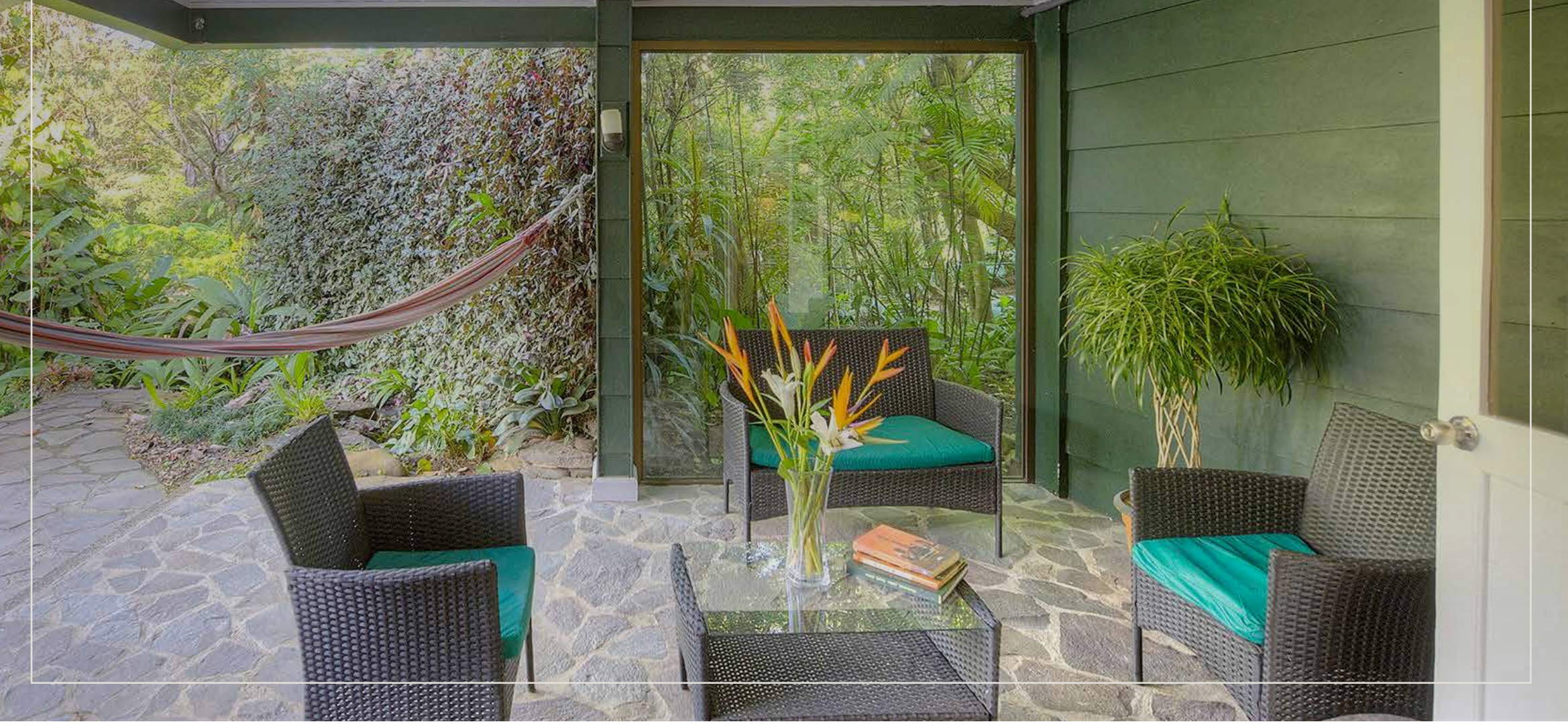
- 2 Cotinga Suites have 1 King Bed
- 1 Cotinga Suite has 2 Single Beds
- In-Room Safe
- Hot water
- Ceiling Fan
- Reading Lamps
- Hair Dryer
- Free wireless internet
- AC







# Cotinga Suites







# Policies & Important Considerations

- Taxes are not included in rates, 13% is added for rooms and 23% is added for meals.
- Rates for lodging are PER ROOM based on single or double occupancy.
- Maximum number of guests per room is 4. Cost for additional guest is per person and includes breakfast.
- Bedding cannot be guaranteed until check in.
- Breakfast is included in room rate.
- Rates are subject to change without notice.
- Lodge is a Non-Smoking Lodge, a fine of \$500 will be charged when smoking in the property.

## Children Policies

- **Lodging:** Up to two children ages 10 or younger stay free when sharing a room with two adults.
- **Meals:** We offer a children's menu.
- **Tours:** Policies vary depending on the activity. When child rates are available, they will be passed along.







## El Jardin Restaurant

Begin and end your days in the El Jardin Restaurant at Monteverde Lodge. Our menu includes the freshest local produce simply prepared. All meals include fresh homemade bread. Our wine list includes some of the best South American Wines.

*Open from 06:00am to 09:00pm.*







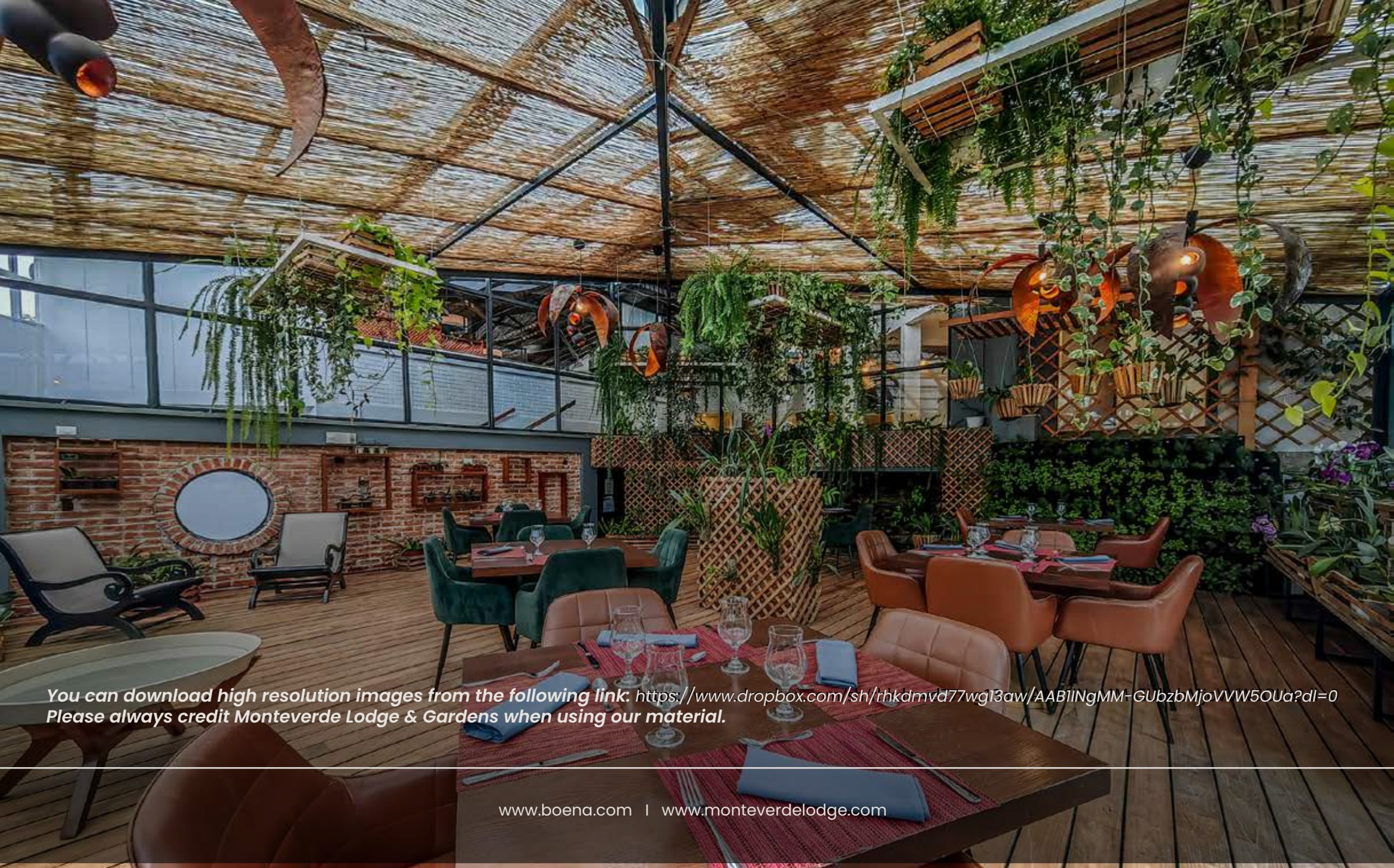












*You can download high resolution images from the following link: <https://www.dropbox.com/sh/rhkdmvd77wg13aw/AAB11NgMM-GUbzbMjoVvW5OUa?dl=0>  
Please always credit Monteverde Lodge & Gardens when using our material.*





**BÖÖENA**

Wilderness Lodges

Monteverde Lodge

[www.monteverdelodge.com](http://www.monteverdelodge.com)