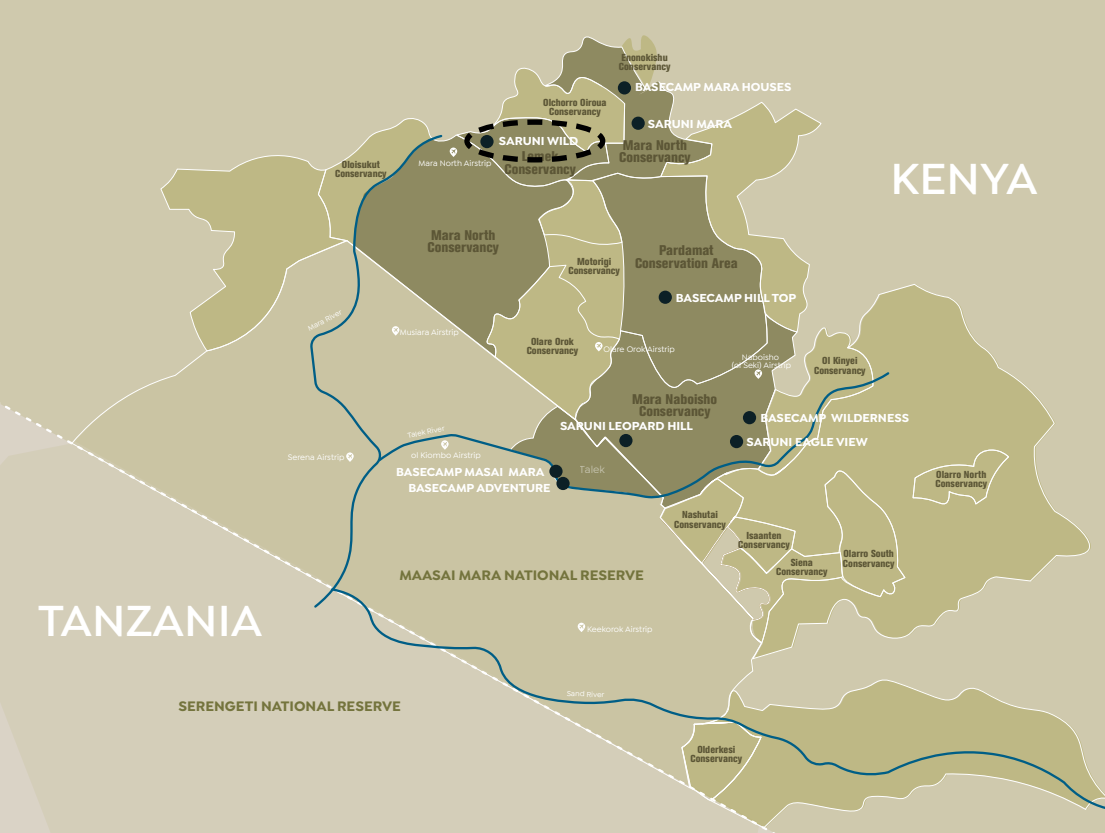


SARUNI BASECAMP

PEOPLE  NATURE



SARUNI WILD










INTRODUCING SARUNI WILD

Saruni Wild offers an authentic East African luxury tented safari camp experience combined with a genuine sense of adventure. The combination of elegant, luxury under-canvas accommodation and exceptional wildlife viewing makes for the ultimate safari experience. The camp offers a feeling of yesteryear combined with modern creature comforts. The secluded location of Saruni Wild ensures a private, exclusive experience, far away from the crowds that can sometimes be encountered in other areas. Saruni Wild offers a real feeling of freedom: uninterrupted views, starlit dinners and storytelling evenings around the campfire. From Saruni Wild, you are in an ideal position to witness the incredible spectacle that is the Great Wildebeest Migration, including the possibility of dramatic river crossings.



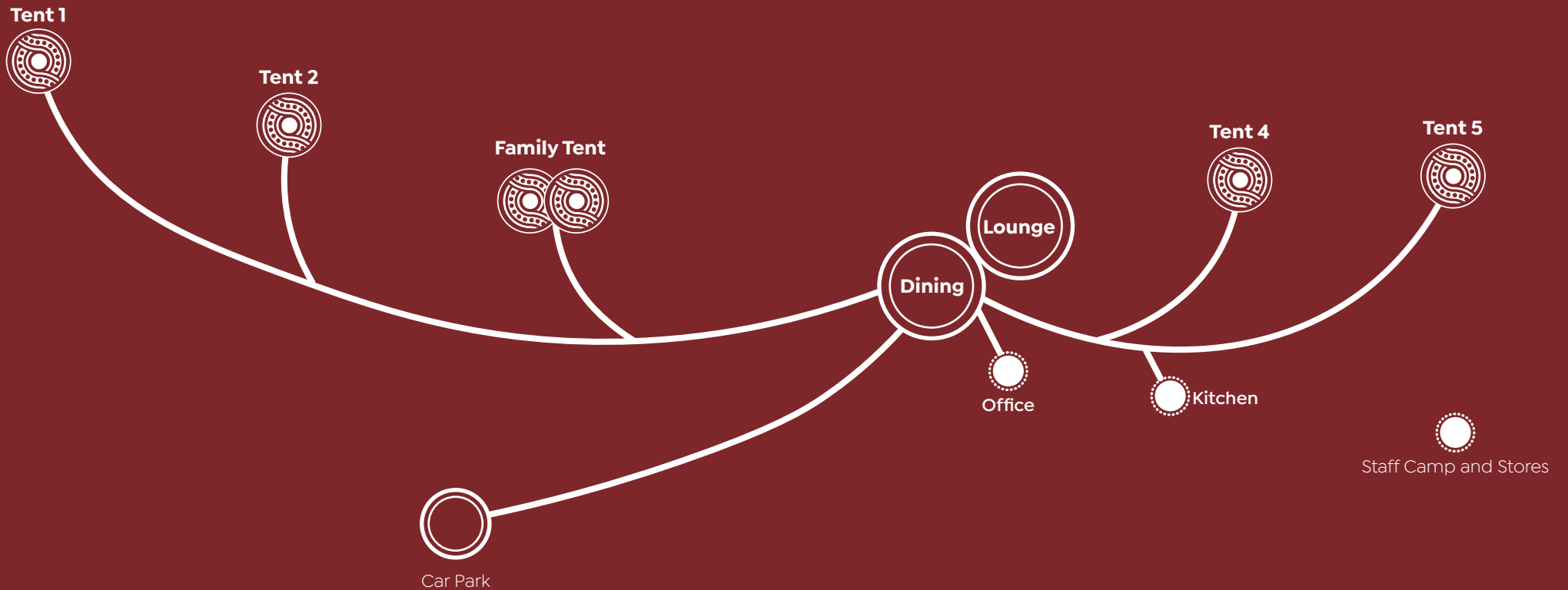
SARUNI WILD AT A GLANCE

	Lemek Conservancy, Masai Mara, Kenya
	Camp
	Best for Great Wildebeest Migration
	Guest tents
	Children welcome
	Solar power
	No annual closure dates

HIGHLIGHTS

	Unique, secluded location
	Local Maasai warriors as guides
	Wildlife photography
	Authentic cultural experiences
	Night game drives

VIEW OVER
LEMEK CONSERVANCY



CAMP
LAYOUT



SARUNI WILD DETAILS

Location	Lemek Conseruancy, Masai Mara, Kenya	
Road access	✓	4x4 uehicles only
Self-drive access	✓	5 hours' drive from Nairobi to Saruni Mara, then a further 40 minutes to Saruni Wild.
Air access	✓	One airstrip around 15-30 minutes' drive from Saruni Wild, with daily scheduled flights from Nairobi and Mombasa. Charter flights are also an option.
Trauersing area	17,500 acres	
Views	Mara plains	

GEOGRAPHY & CLIMATE

Altitude	5,500 – 6,400ft	
Days	Warm, dry	
Nights	Cool	
Humidity	Zero	
Annual rainfall	760mm	

CAMP AMENITIES

Architecture	Luxury tents	
Construction	Canvas, wood	
Maximum guests	12	
Minimum age requirement	x	
Can be booked on an exclusive-use basis	✓	
Shared spaces (lounge, dining room, deck) – Topi Tent	✓	
Electricity – 220V	✓	
Back-up generator	✓	
International adaptors	x	3-point British plugs
Complimentary Wi-Fi	✓	Guest tents only

Mobile phone signal	✓	Safaricom – signal strength varies
Pool	x	
Wellbeing Space	x	In-tent treatments

ACCOMMODATION & ROOM AMENITIES

En suite	✓	
Double tent (sleeps 2)	4	One extra bed can be added to each tent to accommodate a child under 16
Family tent (sleeps 4)	1	
Indoor Shower	✓	
Private pool	X	

FOOD & DRINK

Full-board accommodation (breakfast, lunch, dinner)	✓	
Cuisine	Italian-inspired	
Dietary requests and allergies accommodated	✓	
Shared dining area	✓	
In-villa dining (optional)	X	
Bush meals, picnics & sundowners	✓	
Complimentary bottled mineral water	✓	
Complimentary refillable water bottle	✓	
Complimentary local drinks	✓	
Premium/imported drinks	✓	Payable extra
Languages spoken	English, Kiswahili	

VEHICLE ACTIVITIES IN OPEN-SIDED GAME VIEWERS

Shared game drives	✓	
Exclusive use of vehicle	✓	Payable extra – daily cost





ACTIVITIES & EXPERIENCES – INCLUDED

Local Maasai guides	✓	
Guided day game drives	✓	
Guided night game drives	✓	
Guided bush walks	✓	
Picnics, bush meals and sundowners	✓	
Drive to Mount Kilileoni	✓	
Cultural visit to local market	✓	
Warriors Academy	✓	Special bush skills and animal tracking programme, bookable in advance
Tribal storytelling through song and dance	✓	On occasion only
Massages & Treatments	✓	Complimentary 30 mins back and neck massage per tent/ per stay

ACTIVITIES & EXPERIENCES – OPTIONAL (PAYABLE EXTRA)

Gift shop (artisanal crafts)	✓	At Saruni Mara
Migration river crossing	✓	
Visit to the Ol Chorro Rhino Sanctuary	✓	
Entrance into Masai Mara National Reserve	✓	
Scenic hot air balloon flights	✓	
Traditional weddings and blessings	✓	



ACCEPTED PAYMENTS IN CAMP

Cash – KSH	✓	
Cash – USD	✓	Only notes newer than 2013
Cash – EUR	✓	
Cash – GBP	✓	
Credit cards – Visa	✓	Surcharge applies if settling accommodation costs
Credit cards – Mastercard	✓	Surcharge applies if settling accommodation costs
Debit cards	✓	

GRATUITIES (DISCRETIONARY) CAN ONLY BE PAID IN CASH

Recommended per day – guide	US\$10	Can only be paid in cash
Recommended per day – staff	US\$5–10	

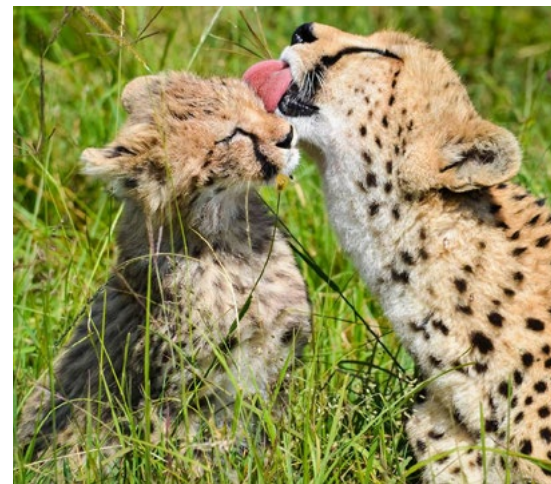
HEALTH PRECAUTIONS

Malaria risk	Low
Sun protection	Recommended

RESPONSIBLE TOURISM

Saruni Basecamp believes fully and invests significantly in community development and conservation

- More than 80% of Saruni Wild's employees are Maasai from the local communities. They are trained and employed so that the local communities benefit directly from the lodge being in the area.
- Saruni Basecamp sponsors young Maasai to train as guides at the Koiyaki Guiding School, to empower them to lead future generations of conservationists and safari guides.
- The camp protects the northern corridors of the Masai Mara ecosystem and contributes to the preservation of the Lemek and Mara North Conseruancies.





SARUNI WILD – IN A NUTSHELL

Exceptional wildlife & diverse landscapes	Life transforming experiences	Positive impacts for the land and its people
Prime game viewing with abundant wildlife all year round	Classic safari under canvas experience	The Maasai are the custodians of this community land
Opportunity to view nocturnal animals	Exclusive game viewing experiences – low operational impact and uncrowded sightings	Maasai and Samburu camp management with 80%+ local staff
Home to the Great Wildebeest Migration	Diverse activities – something for everyone	Tourism revenue provides the main source of commercial income for the community.
Situated in the private Lemek Conservancy – 17,500 acres of protected wilderness	Immersive and transformative cultural experiences	Guests contribute to conservation through their stay e.g., by paying daily conservation fees
A lush, wildlife-rich forest overlooking the Mara plains	Warriors Academy	

Book your Saruni Wild adventure today!



PEOPLE ✓ NATURE

T: +254 (0)796 222 555

RESERVATIONS@SARUNIBASECAMP.COM | SALES@SARUNIBASECAMP.COM

WWW.SARUNIBASECAMP.COM

