

SARUNI BASECAMP

PEOPLE  NATURE



SAFARI SECRETS

KENYA'S HIDDEN GEMS

Explore the side of Kenya most tourists never see.

7 Nights / 8 Days

SIGNATURE SAFARIS - Northern Kenya & Mara Safari





SUGGESTED SAFARI OVERVIEW

SAFARI SECRETS 2024

OFFER VALIDITY

03 January 2024 – 02 January 2025

DESTINATION

Samburu | Masai Mara, Kenya

LODGES & CAMPS

Saruni Rhino, Saruni Samburu & Saruni Leopard Hill

DURATION

7 nights / 8 days

MINIMUM GUESTS

2

ALL-INCLUSIVE COST

FROM **US\$6,775** per adult sharing



A life-enriching journey into some of Kenya's less well-known protected areas, with the opportunity to enjoy exceptional wildlife viewing and authentic, immersive cultural encounters. Plus, you'll get to see the difference that conservation initiatives are making.

Choose to follow our suggested safari (as outlined below), featuring the very best of Saruni Basecamp experiences, or ask our team to adjust the programme to your specific preferences and create your perfect tailor-made safari experience, far from the beaten path.



HIGHLIGHTS

- Private conservancies – no crowds
- Incredible wildlife sightings
- Scenic flight transfers between regions
- Game drives and walking safaris
- Rhino tracking experiences on foot

THE SARUNI BASECAMP DIFFERENCE

- Remarkable locations
- Warm, welcoming local staff
- Expert local guides
- Remote, secluded and intimate lodges & camps
- Warm, genuine Kenyan hospitality

Lodges & Camps

Saruni Rhino x 2 nights

- Exclusive access to the Sera Community Conservancy
- First on-foot black rhino tracking experience in East Africa
- Discover remote tracts of northern Kenya
- Experience unique local traditions
- Regular elephant visits to the camp waterhole.

Saruni Samburu x 2 nights

- A small, intimate lodge in a vast landscape, with spectacular mountain views.
- Eco-chic architecture
- Exclusive 200 000-acre wilderness area to explore (private conservancy)

Saruni Leopard Hill x 2 nights

- Modern safari styling in a classic Mara setting
- Unlimited access to the Mara Naboisho Conservancy
- A hotspot for lion sightings
- Remarkable skylines by day and night
- Contribute to Maasai community upliftment

PRICING

PUBLISHED RATE | Per adult sharing

Low Season	01 Mar-31 May 2024 01-30 Nov 2024	US\$6,775
Mid-Season	03 Jan-29 Feb 2024 01-30 Jun 2024 01-31 Oct 2024 01-19 Dec 2024	US\$7,475
High Season	01 Jul-30 Sept 2024 20 Dec 2024-02 Jan 2025	US\$8,175

SUGGESTED SAFARI

(MAY VARY DEPENDING ON LOCAL CIRCUMSTANCES, WEATHER, AND THE RECOMMENDATIONS OF YOUR GUIDES)

Day 1 | Saruni Rhino

- Saruni Basecamp transfer from Jomo Kenyatta International Airport to Wilson Airport (both in Nairobi).
- One-hour* scenic flight to Samburu, to be met by a Saruni Basecamp guide for your camp transfer or game drive (approximately 1.5 hours*).
- Afternoon game drive and sundowners in the Sera Community Conservancy.



Day 2 | Saruni Rhino

- Early morning black rhino tracking experience followed by a visit to the Kisima Hamsini Singing Wells.
- Picnic lunch and return to camp.
- Candlelit bush dinner with traditional Samburu dancing.



Day 3 | Saruni Rhino to Saruni Samburu

- Morning game drive (including a bush breakfast) en route to Saruni Samburu, looking out for the Samburu Special Five.
- Arrival at Saruni Samburu in time for an al fresco lunch overlooking the Kalama Conservancy.
- Relaxing afternoon in the lodge (including a complimentary half hour Back & Neck massage in the Samburu Wellbeing Space).
- Short evening game drive culminating in sundowners at a waterhole, before a starlit dinner back at the lodge.



Day 4 | Saruni Samburu

- Continue to explore the wonders of Samburu with a morning game drive along the Ewaso Nyiro River.
- Enrol in our Warrior's Academy for the afternoon and immerse yourself in traditional Samburu culture.
- Evening game drive in Kalama Conservancy, ending with a starlit bush dinner followed by a night drive back to the lodge.



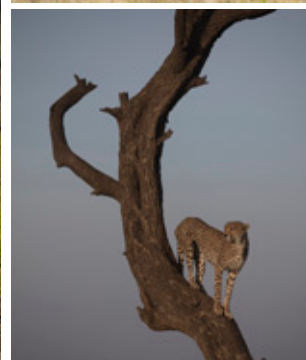
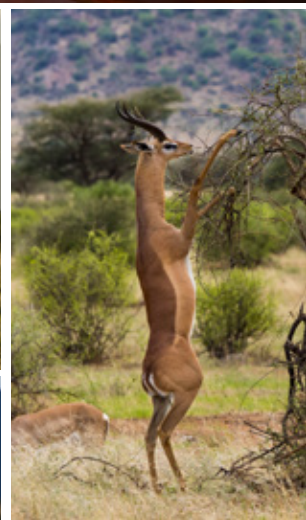
Day 5 | Saruni Samburu to Saruni Leopard Hill

- Depart Samburu on your morning* flight and arrive in the Masai Mara an hour and a half* later.
- Enjoy your first Mara game drive with a picnic lunch, or head to Saruni Leopard Hill to relax and refresh.
- Afternoon game drive in the private Mara Naboisho Conservancy followed by dinner in camp and an optional night game drive.



Day 6 | Saruni Leopard Hill

- Early morning game drive, returning to the camp for lunch and treatments at the Maasai Wellbeing Space.
- Afternoon game drive to the secret haunts of the elusive creature that gave the camp its name.
- Bush dinner under the vast African sky, with traditional Maasai singing and dancing.
- On returning to the camp, push a button to open the roof of your tent and let the circling constellations lull you to sleep.



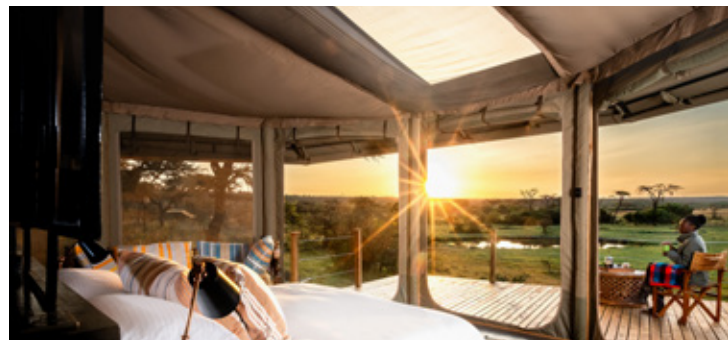
Day 7 | Saruni Leopard Hill

- Guided-bush walk through the hills and valleys surrounding Saruni Leopard Hill, or a game drive in search of the famous Naboisho lions.
- Private dinner in the camp with just your partner or family – a chance to catch up on all the adventures you've shared.



Day 8 | Departure

- Drive through the Mara Naboisho conservancy to the airstrip, looking out for wildlife on the way.
- Saruni Basecamp transfer* to Jomo Kenyatta International Airport, with dinner at the Talisman or Carnivore restaurant (flight times permitting; dinner on your own account).





PEOPLE  NATURE

THE SMALL PRINT

Included

- Full-board accommodation (including meals, and non-premium drinks)
- Selected laundry service
- Family villa accommodation (subject to availability)
- Internal flights and transfers
- Airport assistance
- One complimentary 30-minute Back & Neck massage per room/tent per stay (excluding Saruni Rhino)
- Temporary Flying Doctors cover
- Conservation fees and levies
- VAT and local taxes

Excluded

- Exclusive vehicle use
- Premium drinks
- Additional Wellbeing Space treatments
- Any payable additional activities and entry fees
- Any additional payable services (including childcare)
- Discretionary expenditure (including gratuities, items of a personal nature)
- International flights and travel
- Visas
- Travel and medical insurance
- Any statutory increases beyond our control

Please note

Rates

- Rates with children or for single occupancy are available upon request.

Internal flights

- *Flight times and durations may vary depending on airline, weather and routing, and are subject to change. Road transfer times and durations also subject to change, and will be coordinated with your flights.
- Seats on scheduled flights are subject to availability at confirmation.
- Baggage allowance on internal flights is 15kg per person, preferably in small, soft-sided bags without wheels.