

# TITILAKA

LAGO TITICACA / PERÚ



## THE LODGE

---

Titilaka, a modern all inclusive experience lodge on a remote peninsula on the Peruvian shores of Lake Titicaca, offers a luxurious refuge from which to explore the treasured natural, cultural and historical resources of this mystical region.

Surrounded by stunning scenery and pristine geography, Titilaka's contemporary design and comfort integrates with the natural environment. The architectural concept of Titilaka is closely linked to a special place positioned starkly between water, mountains and sky. The hotel is not only a welcoming lodge full of contemporary comforts and caring services, but a place designed to integrate with the environment and pay homage, if you wish, to the cultures of Lake Titicaca.

Titilaka is also a special place with spectacular views which inspire each visitor to contemplate, explore and enjoy a sense of peaceful isolation and primeval beauty. At 12,500 feet above sea level, we are just that much closer to the sky.

The three-story lodge offers 18 lake-view rooms facing Taquile and Amantani islands to the north; the Bolivian Cordillera Real to the East, along with Lake Titicaca which stretches to the East and West. At the northern tip of the peninsula is the dock, departure point for local and excursion boats.

Titilaka keeps a low carbon footprint. The hotel uses hydroelectric power, natural gas, sources local produce and employs mostly local workers. Interpreters are focused on promoting conservation practices, accentuating local traditions, customs and culture. The hotel actively participates with the local community in various developmental, educational, conservation and social projects. These opportunities are available for guests.

Lake Titicaca, Puno - Peru  
USA T. +1 347 713 7030 /  
T. +51 1 700 5106 /  
F. +51 1 700 51 29  
marketing@titilaka.pe  
[www.titilaka.pe](http://www.titilaka.pe)

# TITILAKA

LAGO TITICACA / PERÚ

## LOCATION

Visitors often compare the setting with the Scottish highlands or Patagonia. Titilaka is strategically located in a rural community south of Puno (the main city in the Peruvian shore of the lake), surrounded by small hamlets of Quechua and Aymara cultures.

Lake Titicaca is the world's highest navigable lake at 12,500 feet (3,810m) above sea level and covers some 3,200 square miles (8,300 square km) has a depth of 107 meters and is 50 miles (80 km) wide.

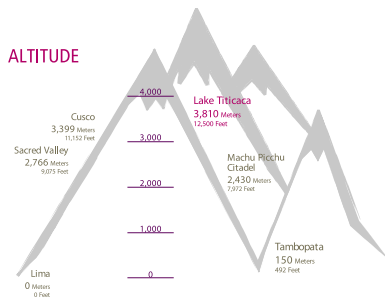
Titilaka is reached by car (30 minutes) and/or by boat, from the Puno Train Station or 90 minutes by road from the nearest airport at Juliaca (JUL).



Lake Titicaca, Puno - Peru  
USA T. +1 347 713 7030 /  
T. +51 1 700 5106 /  
F. +51 1 700 51 29  
marketing@titilaka.pe  
www.titilaka.pe

# TITILAKA

LAGO TITICACA / PERÚ



## WEATHER

<b>JAN</b> 17°/4°C 62°/40°F	<b>FEB</b> 17°/4°C 62°/40°F	<b>MAR</b> 17°/4°C 62°/40°F	<b>APR</b> 17°/2°C 63°/35°F	<b>MAY</b> 18°/3°C 64°/27°F	<b>JUN</b> 16°/6°C 62°/22°F
<b>JUL</b> 16°/6°C 62°/21°F	<b>AUG</b> 17°/4°C 62°/25°F	<b>SEP</b> 18°/1°C 64°/31°F	<b>OCT</b> 18°/2°C 65°/36°F	<b>NOV</b> 19°/3°C 66°/38°F	<b>DEC</b> 18°/4°C 65°/39°F

Departmental Capital

District Capital

Provincial Capital

Protected Area

Paved Road

Unpaved Road

Railroad Line

AIRPORT

PORT

TRAIN

## ATTRACTIONS

ARCHAEOLOGICAL SITE

ASTRONOMY

BICYCLE

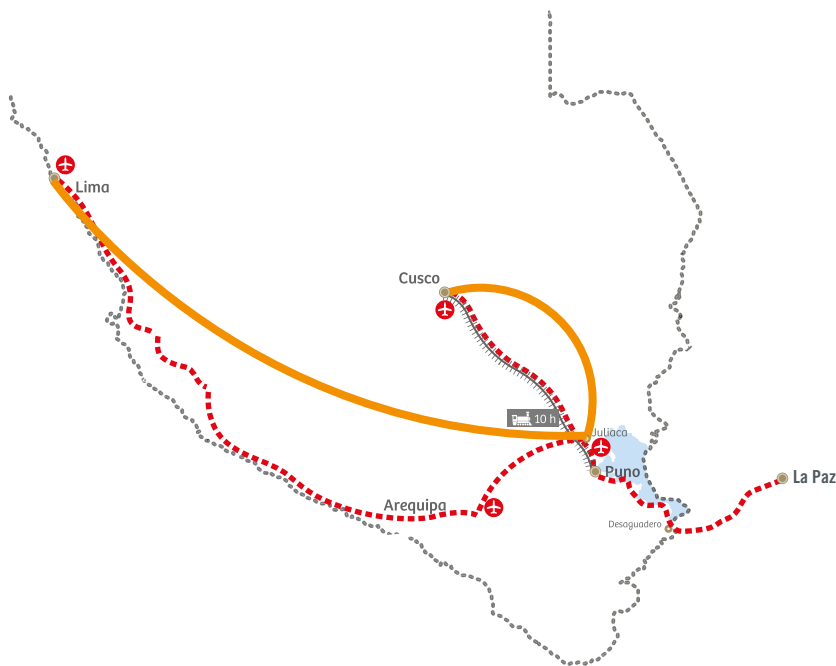
BIRDS

BOAT

LOCAL COMMUNITY

PHOTOS

## ACCESS TIMES AND TRAVEL



### FLY

LATAM AND AVIANCA

LIMA: 4 - 110 Mins Flights  
CUSCO: 1 - 40 Mins Flights

### SCENIC DRIVE FROM

CUSCO 10 HOURS  
BOLIVIAN BORDER 2 HOURS  
AREQUIPA 7 HOURS  
COLCA CANYON 7 HOURS

### TRAIN

Once a week  
Departs Every Tuesday at 11.00am  
9 Hours Travel Time  
21 Hours Total Experience  
Transfer to Titilaka on Wednesday at 8.00am

### Distances to Titilaka:

- From Juliaca Airport: 47 Miles (76 km) 90 minutes
- From Puno Train or Bus Station: 22 Miles (36 km) 40 minutes
- From the Bolivian Border: 78 Miles (126 km) 60 minutes

Lake Titicaca, Puno - Peru  
USA T. +1 347 713 7030 /  
T. +51 1 700 5106 /  
F. +51 1 700 51 29  
marketing@titilaka.pe  
[www.titilaka.pe](http://www.titilaka.pe)

# TITILAKA

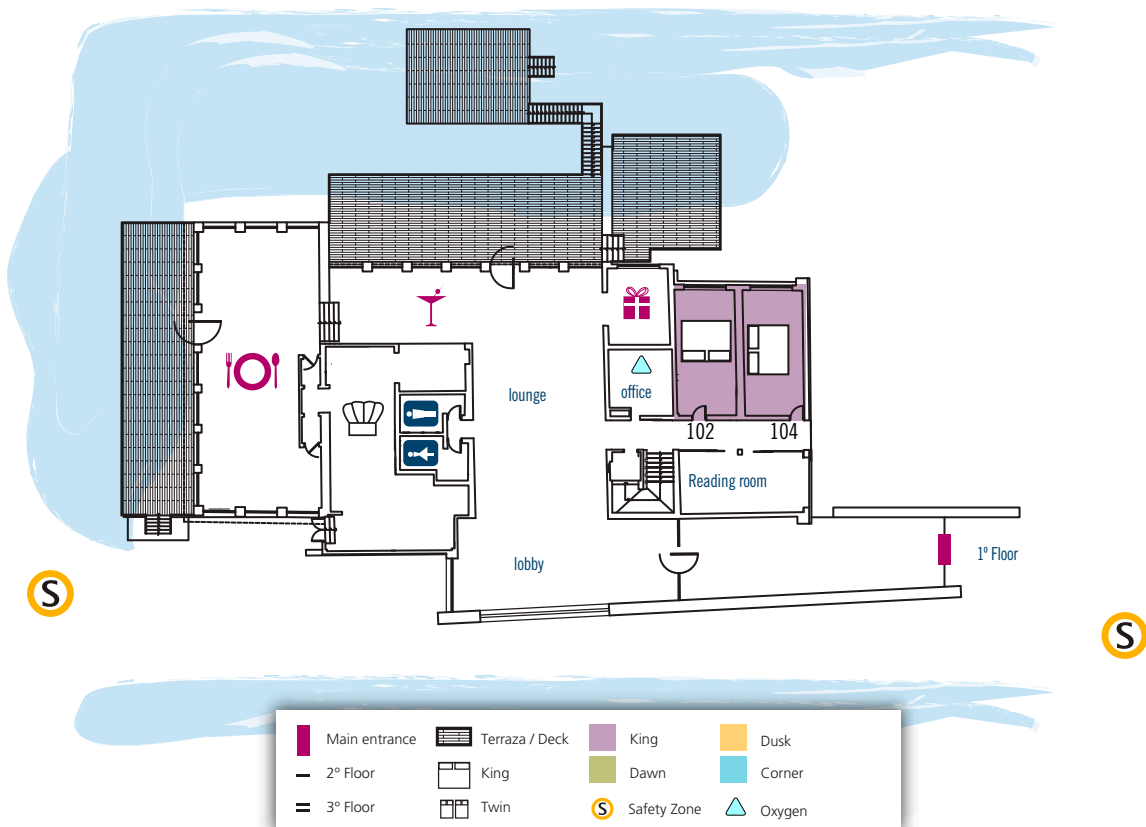
LAGO TITICACA / PERÚ

## FACILITIES

The hotel is designed as an experience lodge or hub to facilitate exploration and maximize exposure to the lake, nature and local life style. All services and facilities were designed accordingly.

- 4 acres of grounds and two private beaches on a private peninsula
- 18 fully equipped lake view rooms
- Outdoor wrap-around terraces, an overwater deck and boardwalks
- Reception, sitting areas, 3 Lounges, main dining room and fully stocked bar with well stocked regional wine cellar
- Fully equipped media and reading room with satellite TV, books, games and DVD's
- Small jetty or landing dock
- Massage room
- Boutique, located off the Lobby Lounge, offers an eclectic collection of merchandise.

## FIRST FLOOR LAYOUT



Lake Titicaca, Puno - Peru  
 USA T. +1 347 713 7030 /  
 T. +51 1 700 5106 /  
 F. +51 1 700 51 29  
 marketing@titilaka.pe  
 www.titilaka.pe



# TITILAKA

LAGO TITICACA / PERÚ

## SERVICES

---

- Two daily outings with a choice of 14 excursion in Peru and 2 excursion into Bolivia
- Interactive nature, social and conservation programs
- Fully equipped excursion center with kayaks and bicycles
- Private vehicles for land transfers and organized excursions
- Row boat to access nearby islands and reef
- Fresh flowers, hotel aroma and candle lit evenings
- Experience concierge service to help organize travel arrangements
- 24 hour room and laundry service
- Three times per day maid service
- Nurse available; first aid and oxygen available at all times, easy 40-minute access to a local hospital
- Guests may dine in their room, at the main dining room, on the terraces or picnic style on outings.
- Cuisine is served by butlers offering local ingredients including lake trout, local produce and fusion Andean-contemporary dishes influenced by awarded Peruvian cuisine and Andean spices. The emphasis is on simple wholesome nutritious food to provide energy for the excursions yet light enough considering the high altitude.
- Guests are offered daily specials and a selection of a la carte options. Full breakfast is served from dawn until noon, including local breads, cheese, fruits and egg options. Lunch and appetizers are served from noon until 3pm, and afternoon tea is offered prior to the excursions. Cocktails and dinner are served from 7pm. Selection of creative snacks offered throughout the day. Sundowners served in the lounge, on the beach or on the outings.
- Bar service available throughout the day (happy hour from 6:30 p.m. – 7:30 p.m.)
- Massage Room available offering various massage services.
- Kids Services; as a kids' friendly lodge, activities and excursions are adequate for children. The staff is trained and accustomed to working with children of various ages and nationalities. Babies under 5 years old are not encouraged. Cribs and Nanny services are available upon request.
- Full connectivity including International phone service, complimentary wireless internet access (satellite connection) as well as cellular phone coverage.

# TITILAKA

LAGO TITICACA / PERÚ

## ROOMS

The hotel features eighteen lake-facing rooms with exceptional view which are scattered on three levels connected by a central hallway. Each room has an open format and is equipped with a full bathroom and furnished with contemporary lines complemented by local textiles and fresh flowers.

Each room is fully equipped with:

- Blackout Curtains, Centralized lighting, individual reading lamps
- Individually controlled heated floors, bedding includes Pima cotton, individual down duvets and extra pillows
- Fully stocked mini bar
- I-pod dock
- Personal safe
- Organic bathroom amenities
- Two telephones
- Coffee table, desk, ample closet space

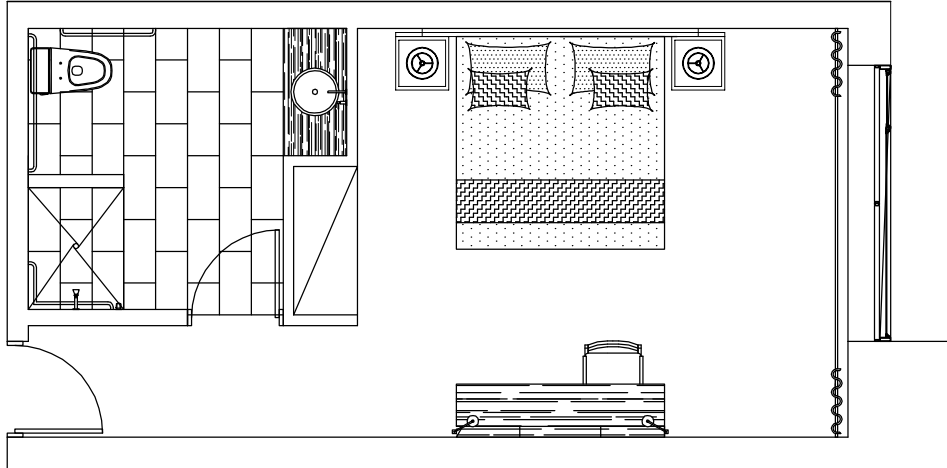


Lake Titicaca, Puno - Peru  
 USA T. +1 347 713 7030 /  
 T. +51 1 700 5106 /  
 F. +51 1 700 51 29  
 marketing@titilaka.pe  
 www.titilaka.pe

# TITILAKA

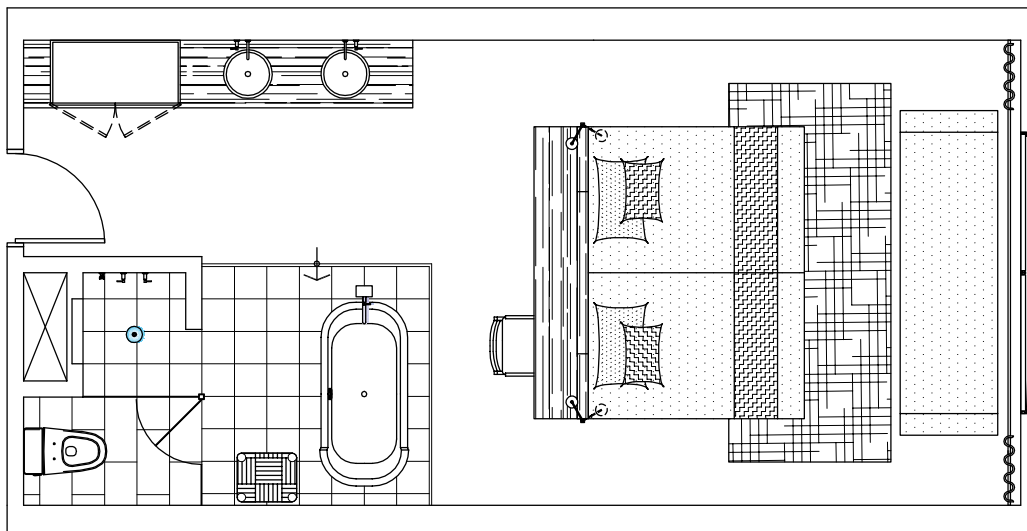
LAGO TITICACA / PERÚ

## King Room



4 King Rooms (28 sq mt / 301 sq ft) located in the first and second floor featuring one king sized bed and sofa bed. Bathroom is equipped with shower only.

## Dawn Room

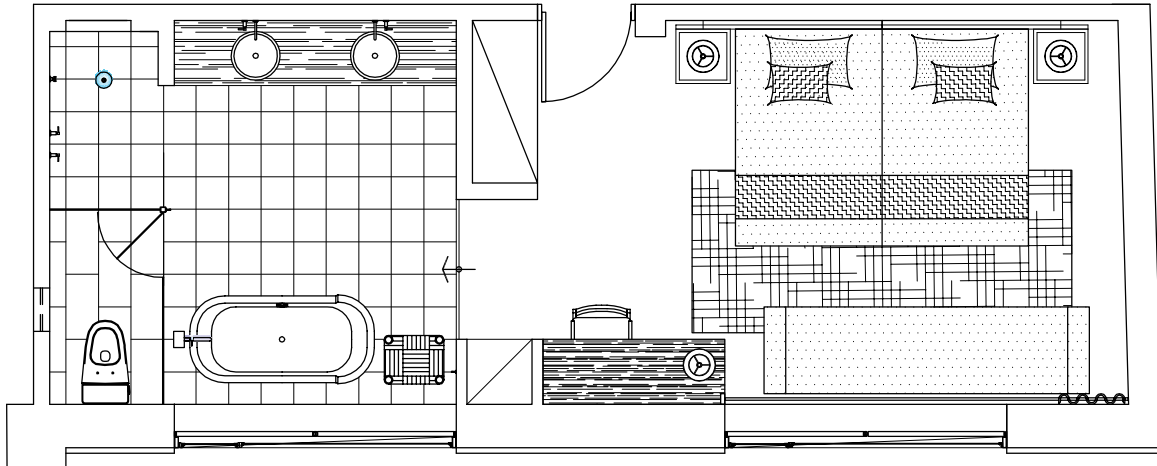


8 Dawn Rooms (30-40 SQM/322 – 430 SQ FT) on the second and third floor face east towards dawn. These rooms have an open format, integrated bathroom separated by a curtain with private toilet and oversized bathtub.

# TITILAKA

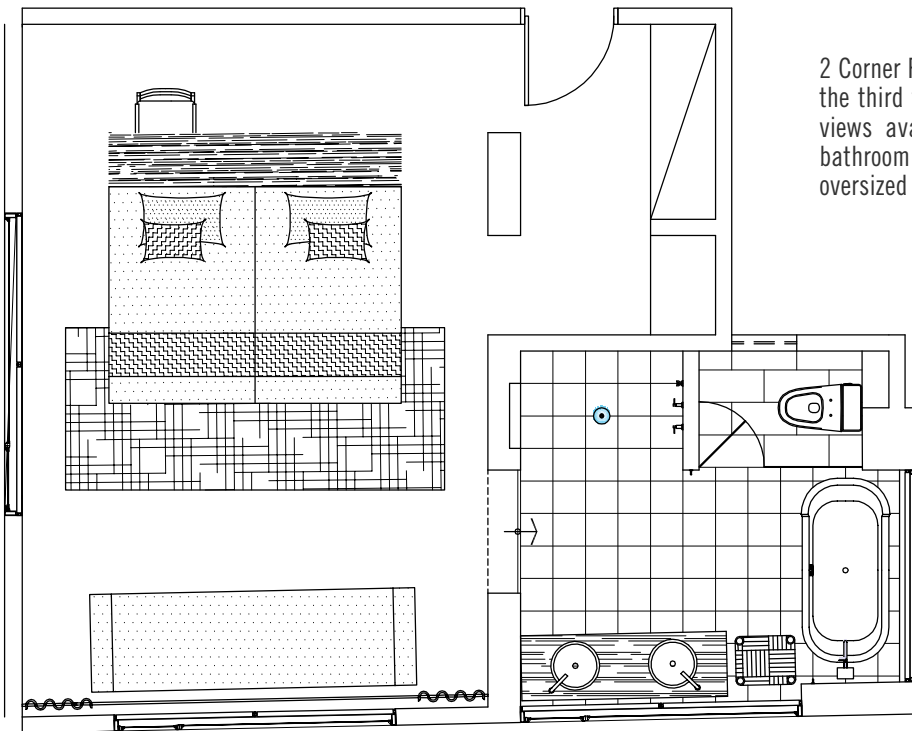
LAGO TITICACA / PERÚ

## Dusk Room



4 Dusk Rooms, (29 – 47 SQM/308 – 505 SQ FT) are doubles on the second and third floor facing west oward dusk. These rooms have a separate bathroom with private toilet, open shower and oversized bathtub.

## Corner Room



2 Corner Rooms (38-43 SQM/409 – 463 SQ FT) on the third floor with double windows and the best views available. These rooms have a separate bathroom with private toilet, open shower and oversized bathtub.



# TITILAKA

LAGO TITICACA / PERÚ

## ROOM CHART

Room Number	Room Category	Area (m <sup>2</sup> )	Area (Sq Feet)	Bed	Bathroom	Other
102	King	28.12	303	1 King Size	Open Twin Basin. Separate WC & Shower	
104	King	29.72	320	1 King Size	Open Twin Basin. Separate WC & Shower	Handicap Access
201	Dawn	34.33	370	1 King Size & Sofabed	Open Bathroom. Shower, Bathtub & Separate WC	
202	King	28.12	303	1 King Size & Sofabed	Open Twin Basin. Separate WC & Shower	
203	Dusk	29.72	320	2 Full Size & Sofabed	Open Bathroom. Shower, Bathtub & Separate WC	Connected Room
204	King	25.97	280	1 King Size & Sofabed	Open Twin Basin. Separate WC & Shower	Connected Room
205	Dawn	36.21	390	1 King Size & Sofabed	Open Bathroom. Shower, Bathtub & Separate WC	
206	Dusk	40.94	441	2 Full Size & Sofabed	Open Bathroom. Shower, Bathtub & Separate WC	
207	Dawn	39.41	424	2 Full Size & Sofabed	Open Bathroom. Shower, Bathtub & Separate WC	
208	Dawn	38.59	415	2 Full Size & Sofabed	Open Bathroom. Shower, Bathtub & Separate WC	
209	Dusk	47.43	511	2 Full Size & Sofabed	Separate Bathroom. Shower, Bathtub & WC	Connected Room
210	Dawn	35.06	377	2 Full Size & Sofabed	Open Bathroom. Shower, Bathtub & Separate WC	Connected Room
305	Dawn	36.21	390	1 King Size & Sofabed	Open Bathroom. Shower, Bathtub & Separate WC	
306	Dusk	40.94	441	2 Full Size & Sofabed	Open Bathroom. Shower, Bathtub & Separate WC	
307	Dawn	39.41	424	2 Full Size & Sofabed	Open Bathroom. Shower, Bathtub & Separate WC	
308	Dawn	38.59	415	2 Full Size & Sofabed	Open Bathroom. Shower, Bathtub & Separate WC	
309	Corner	47.43	511	2 Full Size & Sofabed	Separate Bathroom. Shower, Bathtub & WC	
310	Corner	35.06	377	2 Full Size & Sofabed	Open Bathroom. Shower, Bathtub & Separate WC	

# TITILAKA

LAGO TITICACA / PERÚ

Lake Titicaca, Puno - Peru  
USA T. +1 347 713 7030 /  
T. +51 1 700 5106 /  
F. +51 1 700 51 29  
marketing@titilaka.pe  
[www.titilaka.pe](http://www.titilaka.pe)

