



PALACIO DEL INKA
HOTEL
CUSCO

THE
LUXURY
COLLECTION

FIVE CENTURIES OF HISTORY IN AN EXTRAORDINARY PLACE

- It was part of the most famous temple of the Inca time, the QoriKancha (Temple of the Sun), National Heritage of Cusco.
- 8 angle stone, archeological piece that was part of an imperial Incan wall, related to the practice of important rituals at the time.
- Suites in the "Casona de los Cuatro Bustos", that where part of a Colonial residence in the 16th century.
- Exhibition of 195 pieces of artwork from the Colonial era, 60 of which are original paintings from the Cusqueña Art School.
- Original Inca stone wall of 64 m in length, located in the hotel bar.

THE LUXURY COLLECTION GOLD THREAD

FRETTE – FINE BED LINEN

Explorers and collectors define themselves by their choice of refined luxury and exclusive access, as the original suppliers of fine bed linen since 1860.

The 300 thread-count Frette sheets can be found from the altars of St Peter's Basilica to the country houses and yachts of the true luxury connoisseur.

The Andrea Collection has an exclusive range of 400 thread-count sheets, as well as duvet and cashmere covers; printed with an exclusive pattern that combines classical influences with modern elegance.

BYREDO – INDIGENOUS BATH AMENITIES

BYREDO has created "Le Chemin", an exclusive line of bath amenities for The Luxury Collection, keeping its promise of offering hope and adventure. The scent is composed of raw materials from all over the world and is a true representation of a never-ending path.

BE EPICUREAN

An epicurean program of culinary experiences in one of the most sought-after gastronomic destinations of the world, curated by renowned chefs. "The pleasure of tasting high quality food and drinks is embodied by The Luxury Collection".

DESTINATION DISCOVERIES

A new exclusive program that will allow the guest to become fully immersed in the destination. A guided tour that will uncover the living history of the hotel, during which the guest can learn about the Pre-Inca, Inca, Colonial and Republican eras through various archeological remains that have been preserved over time, and the collection of 195 works of art on permanent exhibition, including 60 original paintings from the Cusqueña School; located in various areas of the hotel.

THE LUXURY COLLECTION CONCIERGE

Our dedicated team of concierges share their experience of Cusco with guests, and help them to explore the best of what the Cusco and the Sacred Valley has to offer; from unique transformative traditions to cultural immersive experiences.





ROOMS

TYPE OF ROOM	NUMBER OF ROOMS	SIZE	KING	TWIN	TPL	K+T	K+2T
Classic	78	323 ft ²	61	17	-	-	-
Deluxe	55	474 ft ²	29	26	-	-	-
Family Deluxe	4	431 ft ²	-	-	2	2	-
Imperial Junior Suite	14	344 ft ²	14	-	-	-	-
Family Suite	5	570 ft ²	-	-	-	-	5
One Bedroom Suite	42	495 ft ²	21	21	-	-	-
Two Bedroom Presidential Suite	1	807 ft ²	-	-	-	-	1

CONNECTED ROOMS

Classic + Classic	(Twin + Twin)	3
Classic + Colonial Classic	(King + Twin)	1
Classic + Palace Suite	(King + Twin)	7
Colonial Classic + Palace Suite	(King + King)	1
Colonial Classic + Palace Suite	(Twin + King)	2
Colonial Classic + Colonial Classic	(King + Twin)	1
Colonial Classic + Palace Suite	(King + Twin)	4
Colonial Marquis + Colonial Marquis	(King + King)	1

TOTAL: 20

AMENITIES

Views to the street, to the hotel patio or Cusicancha
 Balcony and/or terrace
 Rollaway beds (Upon request only for Deluxe Suites)
 Cradle (Upon request)
 LCD Television
 Desk and desk chair
 Heating
 Oxygen tanks (Upon request)
 Oxygen-enriched air (Selected rooms)
 Minibar | coffee maker
 Turn-down service

IMPORTANT INFORMATION

Check-in: 2:00 p.m. | **Check-out:** 12:00 p.m.

Location: 15 minutes from airport | **Transfer:** Private transfer to airport and tours available (Extra cost)

CONSUMPTION CENTERS

RUMI BAR

Open: 4:00 P.M. to 11:00 P.M.
(Subject to change due to restrictions)
Capacity: 40 people
Gastronomy: Cocktails paired with light snacks.

INTI RAYMI RESTAURANT

Open: 6:00 A.M. to 11:00 P.M.
(Subject to change due to restrictions)
Capacity: 60 people
Gastronomy: Regional and international gastronomy based on local ingredients.

ANDES SPIRIT SPA

Open: 10:00 A.M. to 10:00 P.M.
(Subject to change due to restrictions)
5 treatment rooms
Capacity of rooms: 6 people
Capacity of hydromassage circuit: 8 people
Capacity of Spa: 20 people

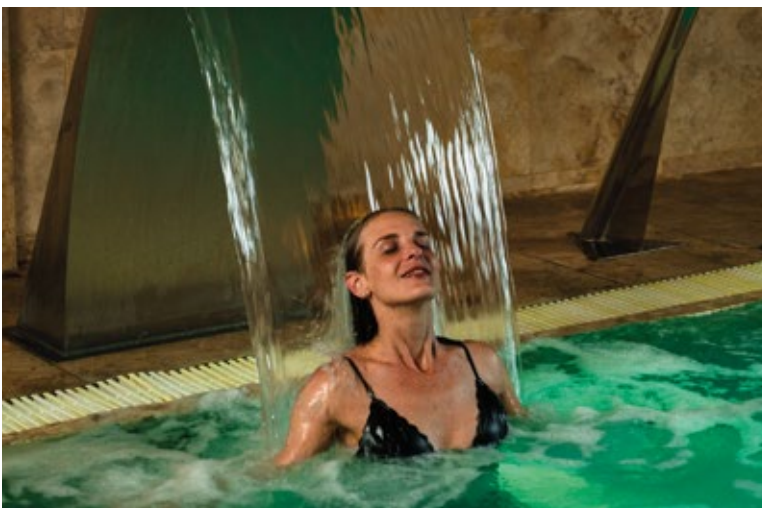
EXPERIENCES

BE EPICUREAN EXPERIENCES (GASTRONOMY)

- The Rumi Shots: Pisco Tasting
- Gin & Tonic enthusiasts: Gin Tasting
- Signature flavors: Cooking Classes
- Casarana: Cheese & Wine
- Ancestral tasting menu: Fusion of cultures
- Culinary Trip: Visit to San Pedro market + Cooking lessons

UNIQUE EXPLORING ACTIVITIES, BY VENTURIA

- Machu Picchu Tour
- The Encounter of Two Worlds (Cusco city tour)
- Tour to the Rainbow Mountain
- Visit to Maras and Moray (Ancestral wisdom)
- Visit to Ollantaytambo (Refined sensibilities)
- Visit to Chinchero (Eternal architecture)
- Visit to Pisac (A feast for the senses)
- Andean ceremonies (Ancestral connection)
- Experience Natural Cusco (Kayak and mountain bike trip, ending with an exclusive picnic)
- Llama trek (Animal immersion)
- Via Ferrata and zipline (Unique expedition)





MEETING ROOMS CAPACITIES

ROOM	AUDITORIUM	BANQUET	CLASSROOM	U/HORSESHOE	HALF MOON	COCKTAIL	BOARDROOM/ IMPERIAL
Qoricancha	200	110	100	60	80	250	60
Inti	30	20	20	12	16	40	12
Quilla	30	20	20	12	16	40	12
Intiquilla	60	50	20	24	32	80	24
Kero	100	80	40	30	40	150	30
Boardroom	-	-	-	-	-	-	12
Patio Cuatro Bustos	-	150	-	-	-	250	-

PALACIO DEL INKA,
A LUXURY COLLECTION HOTEL, CUSCO
PLAZOLETA SANTO DOMINGO 259, CUSCO, PERU
T +51(84) 231 961 - F +51(84) 233 152

PALACIODELINKAHOTEL.COM