



Young Explorers

Okavango Delta Private Concession

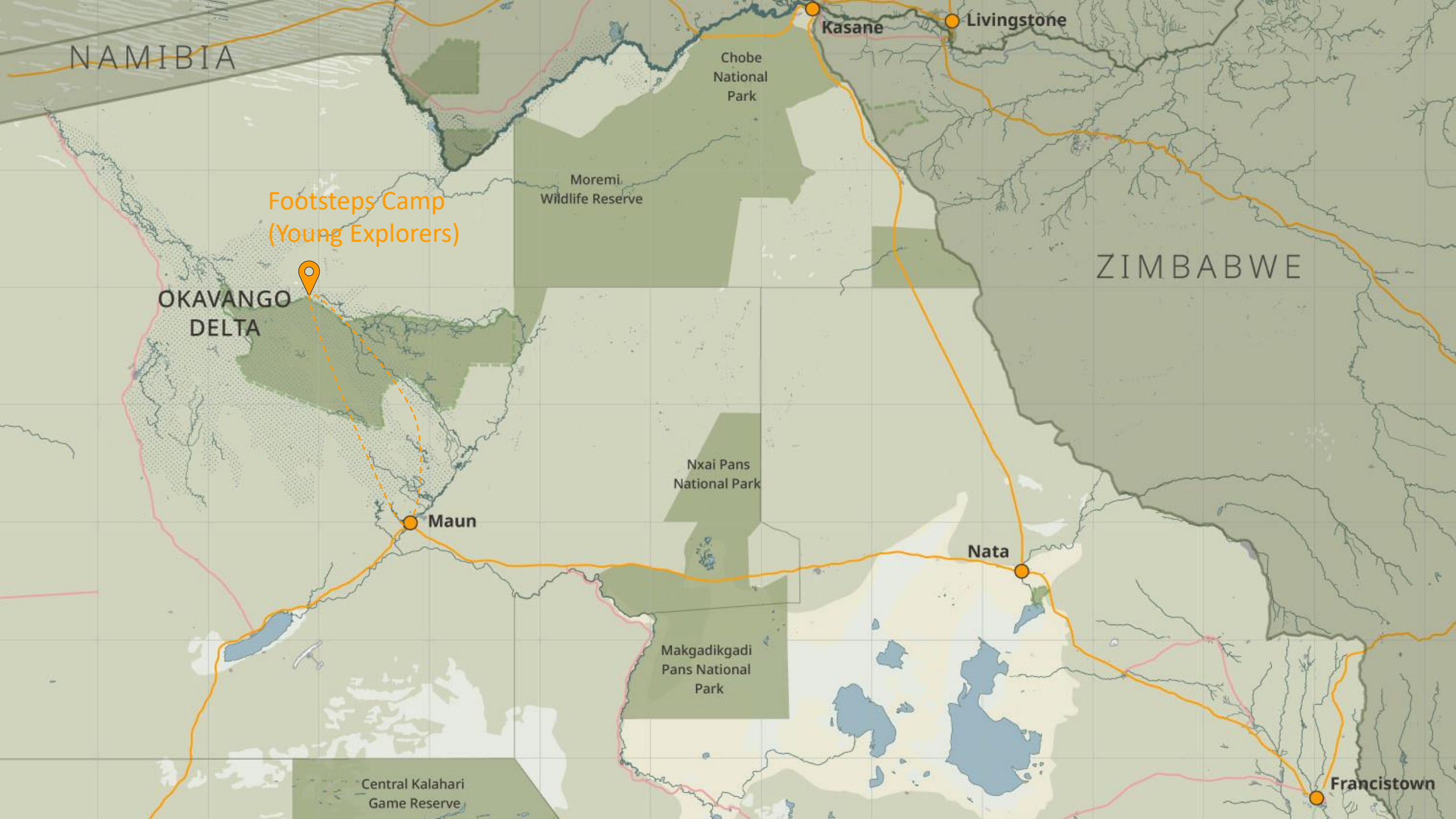
The Young Explorers safari is a specially designed programme which offers families the opportunity to discover the wonders of the African wilderness - together. One of the special attractions of this safari is its exclusivity. Each family has the use of the Footsteps Camp a private sixbedded camp, a professional guide, personal chef, waiter, housekeeper and dedicated Mokoro guides.

It literally allows guests to explore the bush at their leisure, while never losing sight of the fact that being in the wilderness is also about having fun!





Video of Young Explorers



NAMIBIA

Kasane

Livingstone

Chobe National Park

Moremi Wildlife Reserve

Footsteps Camp
(Young Explorers)

OKAVANGO DELTA

ZIMBABWE

Nxai Pans National Park

Maun

Nata

Makgadikgadi Pans National Park

Central Kalahari Game Reserve

Francistown

Information sheet

Facilities

- Maximum 6 guests.
- One family tent sleeping five people in two bedrooms with shared en-suite bathroom
- Two twin/double bedded en-suite Meru tents (triple on request)
- Main mess tent area
- Campfire under the stars
- Private airstrip
- Game viewing platform

Open season and child policy

- 1st March 2020 - 30th November 2020.
- 1st March 2021 - 30th November 2021.
- Minimum age is 7 years.
- Children are permitted to do all activities.

Activities

- Tracking safari – both on foot and in 4x4 safari vehicles.
- Lessons on how to make small animal traps and how to start a fire with two sticks.
- Mokoro poling lessons
- Fishing.



A little bit about Young Explorers

Young Explorers family safari at Footsteps Camp offers a personal safari experience. Hosting a maximum of six guests at a time, it is an ideal option for families. The safari offers a personal service with an experienced specialist guide, a personal chef, waiter, housekeeper and Mokoro guides.

This safari can also be conducted from Shinde Enclave at Enclave rates. Alternatively have a specialist family guide accompany you through any of the Ker & Downey Botswana properties.



Young Explorers Accommodation



The Young Explorers family safari is based at the Footsteps Camp within the Shinde private concession. This comfortable, private camp accommodates six guests in three specially-designed Meru tents. One of the three tents has an additional bedroom converting it into a family tent that sleeps five.

Each tent has its own newly refurbished en-suite bathroom including wash basin, porcelain flush toilet and bush shower, there is even a daily laundry service.

The 'bush kitchen' is run by our chef and prepares menus to whet all appetites.





Young Explorers Activities

The Young Explorers' emphasis is on learning how to track game - both on foot and in 4x4 safari vehicles. We also teach children how to make small animal traps along with how to start a fire from nothing more than two sticks.

The children learn how to: recognise different animal spoor; identify a range of birds; try their hand at poling a Mokoro; drive a game drive vehicle; fish; and shoot an air rifle at tin cans.

On completion of the safari children receive a Young Explorers certificate, tshirt, cap and water bottle.



Vehicle Policy – Window Seat Guarantee

- Toyota Land Cruisers customized into Game Viewers.
- Maximum 4 people per vehicle.
- Guaranteed window seat for all guests.
- Camera Mount for each window seat – padded armrest that moves up and down.
- 2 rows – 3 seats per row.
- Removable roof and folded down windscreen.
- Curtesy lights and easy access steps.
- Compartment for each row to store camera equipment, binoculars and personal items.
- Also on the vehicle bean bags, wet-wipes, hand sanitizer, tissues, toilet paper, paper bags and mints.
- Cooler box with refreshments and glass water bottles.
- Tea box for morning activities and sundowner snack for afternoon activities.
- Private vehicle available on request ahead of travel.



Young Explorers Key Points

- Private Concession in the heart of the Delta
- Children are hands-on on all activities.
- Sole use of camp at Footsteps.
- Young Explorers certificate, tshirt, cap and water bottle for children upon programme completion.
- Can be conducted at Shinde Enclave at Enclave rates.
- Available through Ker & Downey Botswana properties with a specialist guide.



Welcoming you soon....

We open-heartedly await your visit and look forward to providing you with the highest level of wildlife experience, personal service and care.

info@kerdowney.bw

www.kerdowneybotswana.com


KER&DOWNEY
— BOTSWANA —
A NICHE CARVED FROM ETERNITY

