



# SARUNI BASECAMP

PEOPLE  NATURE



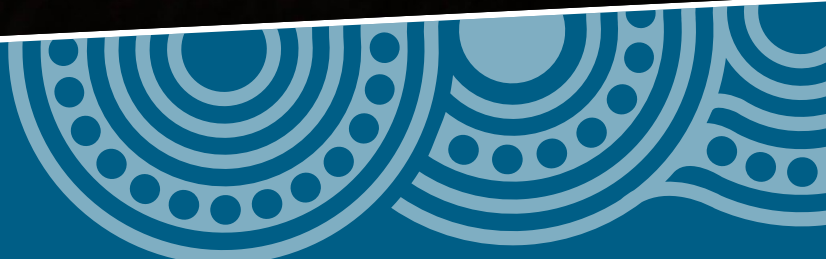
## MARA UNDER CANVAS

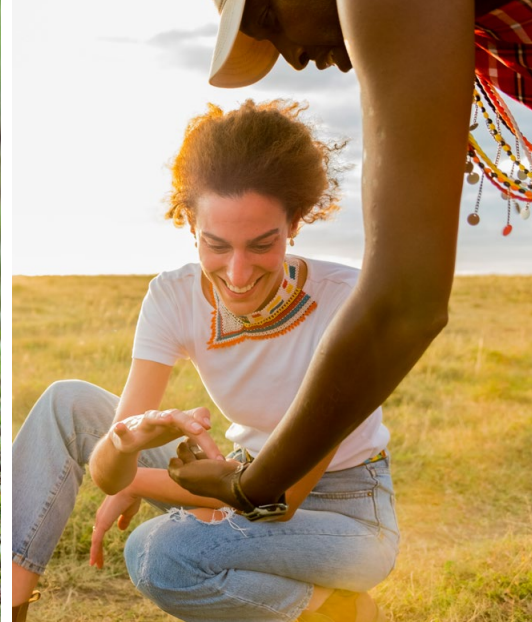
OFF THE BEATEN TRACK IN KENYA

See the true soul of Kenya.

6 nights / 7 days

SPECIALITY SAFARIS | Masai Mara Safari





## SUGGESTED SAFARI OVERVIEW Mara Under Canvas 2024

### OFFER VALIDITY

03 Jan–31 Mar & 01 Jun 2024–02 Jan 2025

### DESTINATION

Masai Mara, Kenya

### LODGES & CAMPS

Basecamp Masai Mara |  
Basecamp Dorobo Mobile | Saruni Wild

### DURATION

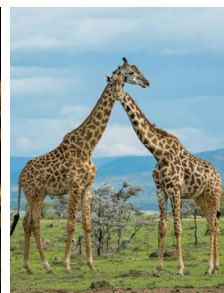
6 nights / 7 days

### MINIMUM GUESTS

4

### ALL-INCLUSIVE COST

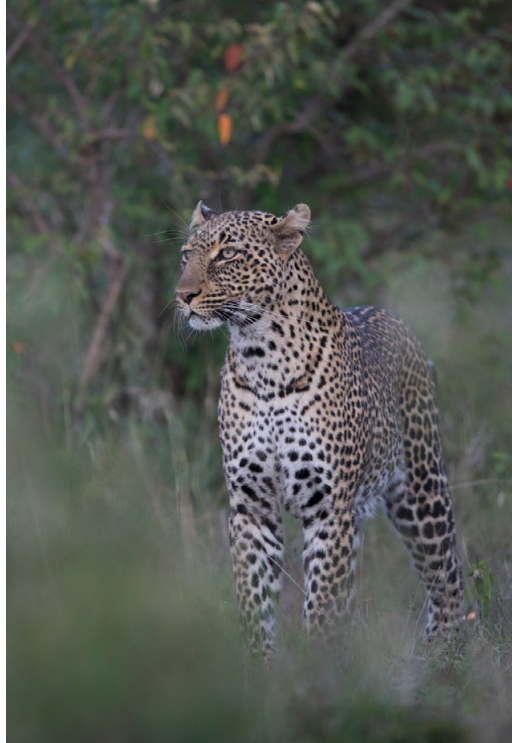
FROM **US\$3,940** per person sharing



Experience the true heart and soul of the Masai Mara – one of Africa’s most iconic wildlife destinations, and the spiritual home of all true safaris. A place of journeys; of arrivals and departures.

Discover landscapes that are at once both familiar and intriguing; and learn to see the endless savannah, rocky kopjes and lone acacia trees through the eyes of the communities that live here – the true custodians of this magical land.

Choose to follow our suggested safari (as outlined below), featuring the very best of Saruni Basecamp experiences, or ask our team to adjust the programme to your specific preferences and create your perfect tailormade safari experience, far from the beaten path.



## HIGHLIGHTS

- Prime game viewing
- Game drives and walking safaris
- Authentic, respectful cultural experiences
- Eco-friendly accommodation options

## THE SARUNI BASECAMP DIFFERENCE

- Remarkable locations
- Warm, welcoming local staff
- Expert local guides
- Remote, secluded and intimate lodges & camps
- Insights into traditional, sustainable lifestyles

### Basecamp Masai Mara x 2 nights

- In the path of the Great Wildebeest Migration
- Iconic Mara landscapes and remarkable year-round wildlife
- A more meaningful safari, supporting local communities
- Local guides, born and raised in the Mara
- Immersive cultural moments

### Basecamp Dorobo Mobile x 2 nights

- Authentic hunter-gatherer experience
- Strategically positioned across various stunning locations within a private conservancy
- Genuine mobile camping experience
- Get closer to the land and the people

### Saruni Wild x 2 nights

- Luxury under canvas
- Be surrounded by the endless Mara plains
- In the path of the Great Wildebeest Migration
- Access to two different private conservancies
- Far away from all the crowds

## PRICING

### PUBLISHED RATE | Per person sharing

Low Season	01-31 Mar 2024	US\$ 3,940
	01-30 Nov 2024	US\$ 4,140
Mid-Season	03 Jan-29 Feb, 01-30 Jun 2024	US\$ 4,440
	01-31 Oct & 01-19 Dec 2024	US\$ 4,640
High Season	July, August, September; 20 December 2024 – 02 January 2025	US\$ 5,240

Basecamp Dorobo Mobile is closed in April & May.

## SUGGESTED SAFARI

May vary depending on local circumstances, weather, and the recommendations of your guides)

### Day 1 | **Basecamp Masai Mara**

- Saruni Basecamp morning\* transfer from Jomo Kenyatta International Airport to Wilson Airport (both in Nairobi).
- One-hour\* scenic flight to the Mara, to be met by a Saruni Basecamp guide for your camp transfer or game drive (approximately 1.5 hours\*).
- Afternoon game drive and sundowners in the Masai Mara National Reserve.



### Day 2 | **Basecamp Masai Mara**

- Morning game drive (including a bush breakfast) to a river crossing to witness the drama of the Great Wildebeest Migration (seasonal), or in search of resident wildlife.
- Return to Basecamp Masai Mara for lunch and a siesta.
- Afternoon visit to the Enjoolata Awareness Centre or Basecamp Masai Brand women's initiative before sundowners at sunset.
- Candlelit bush dinner with traditional Maasai dancing.



### Day 3 | **Basecamp Masai Mara to Basecamp Dorobo Mobile**

- Morning game drive over to the location of Basecamp Dorobo Mobile taking plenty of time to enjoy the scenery and spot birds and wildlife.
- Lunch at Basecamp Dorobo Mobile, followed by a guided bush walk to reveal some of the secrets of the Mara.
- Your first night under canvas in the wild, with only the sounds of nocturnal creatures to disturb you.



## Day 4 | Basecamp Dorobo Mobile

- Breakfast around the campfire, followed by a full day's guided walking safari (with time to relax in the shade during the heat of the day).
- Opportunities to learn about the landscapes, people and wildlife of the Mara, including witnessing traditional ways of life and customs.
- Arrive at the new location of Basecamp Dorobo Mobile to channel the spirit of the original East African safaris.



## Day 5 | Basecamp Dorobo Mobile to Saruni Wild

- Depart Basecamp Dorobo Mobile on a morning game drive and enjoy a leisurely safari transfer to Saruni Wild, on the borders of the Lemek and Mara North Conservancies.
- After lunch in the camp, explore the tens of thousands of unspoiled acres that surround the lodge.
- Enjoy dinner in the camp, then share stories around the fire with our Maasai guides as you take a deep dive into the myth and mystique of the warrior way of life.



## Day 6 | Saruni Wild

- Walk or drive in the hoofprints of the Great Wildebeest Migration as you get in tune with the rhythms of the Mara.
- Enrol in our Warrior's Academy for an immersive afternoon of Maasai culture and learn about customs that have remained intact and largely unchanged for centuries.
- For your last evening on safari, enjoy a bush dinner under the vast African sky, with traditional Maasai singing and dancing.



## Day 7 | Departure

- Drive through the private Lemek Conservancy to the airstrip, looking out for wildlife on the way.
- The return flight to Nairobi leaves the Mara at 11:00\* and arrives in Nairobi at 12:20\*.
- Saruni Basecamp transfer\* to Jomo Kenyatta International Airport, with dinner at the Talisman or Carnivore restaurant (flight times permitting; dinner on your own account).





## THE SMALL PRINT

### Included

- Full-board accommodation (including meals, and non-premium drinks)
- Selected laundry service
- Family villa accommodation (subject to availability)
- Internal flights and transfers
- Airport assistance
- One complimentary 30-minute Back & Neck massage per tent per stay – available at Saruni Wild only
- Temporary Flying Doctors cover
- Conservation fees and levies
- VAT and taxes

### Excluded

- Exclusive vehicle use
- Premium drinks
- Additional Wellbeing Space treatments
- Any payable additional activities and entry fees
- Any additional payable services (including childcare)
- Discretionary expenditure (including gratuities, items of a personal nature)
- International flights and travel
- Visas

### Please note

#### Rates

- Rates with children or for single occupancy are available upon request.

#### Internal flights

- \*Flight times and durations may vary depending on airline, weather and routing, and are subject to change. Road transfer times and durations also subject to change, and will be coordinated with your flights.
- Seats on scheduled flights are subject to availability at confirmation.
- Baggage allowance on internal flights is 15kg per person, preferably in small, soft bags without wheels.