

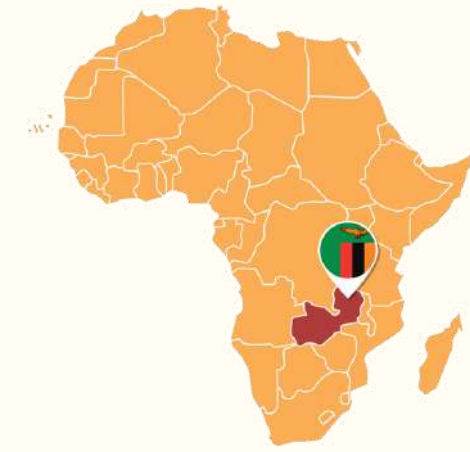
CHUNDUKWA RIVER LODGE

*Be in Nature*





## LIVINGSTONE, ZAMBIA



## HIGHLIGHTS

- + *This is an owner-run lodge located 25kms from Victoria Falls.*
- + *The property is a working horse ranch, home to stables of 40+ horses and a wonderful array of farmyard animals. It is also a wildlife corridor and elephant, hippo and crocodile are regular sightings.*
- + *Chundukwa River Lodge has a large focus on nature and responsible tourism, from the organic vegetable gardens to guest shampoo.*

Nestled along the Zambezi River, just outside of Livingstone, Chundukwa River Lodge is a thoughtfully designed space for guests to align with nature and immerse themselves in a more meaningful travel experience.

*We offer an oasis of quiet luxury.* Stay in one of five stunning Riverside Chalets, each offering an exquisitely tranquil riverside setting - or your own private cottage - and enjoy farm-life and the wilderness here. *Unwind and reconnect* - river watch, horse ride, practice yoga or just enjoy the magnificent birdlife and warm Zambian hospitality in the sunshine. Our luxurious camp retains its bush authenticity with little interference of the river bank – no reeds or trees have been cut, thus allowing birds and wildlife such as hippos and otters to move freely between land and water. Sit under the shade of ancient trees and listen to the bellows of hippos echoing across the river.

# CHUNDUKWA RIVER LODGE

## LODGE DETAILS

### RIVERSIDE CHALETS

- + 5 Riverside Chalets - one bed, one bathroom  
Max 2 Guests, Children 10 yrs and over are welcome  
*Jacana Chalet can accommodate up to 2 children sharing under 16 years*
- + 1 Family-Friendly Cottage - three bedrooms, two bathrooms and private swimming pool  
Max 6 Guests, all ages are welcome
- + Open-fronted layout offering breathtaking views over the Zambezi River
- + Double or twin configuration
- + Fan in sleeping areas (open-front layout not conducive to aircon)
- + Mains power, multi-adaptor plugs
- + Wifi
- + Main lodge - dining areas, lounge, pool and riverfront deck

### NEED TO KNOW

- + Open all year
- + Eco-friendly lodge
- + 40 min road transfer from Livingstone Airport



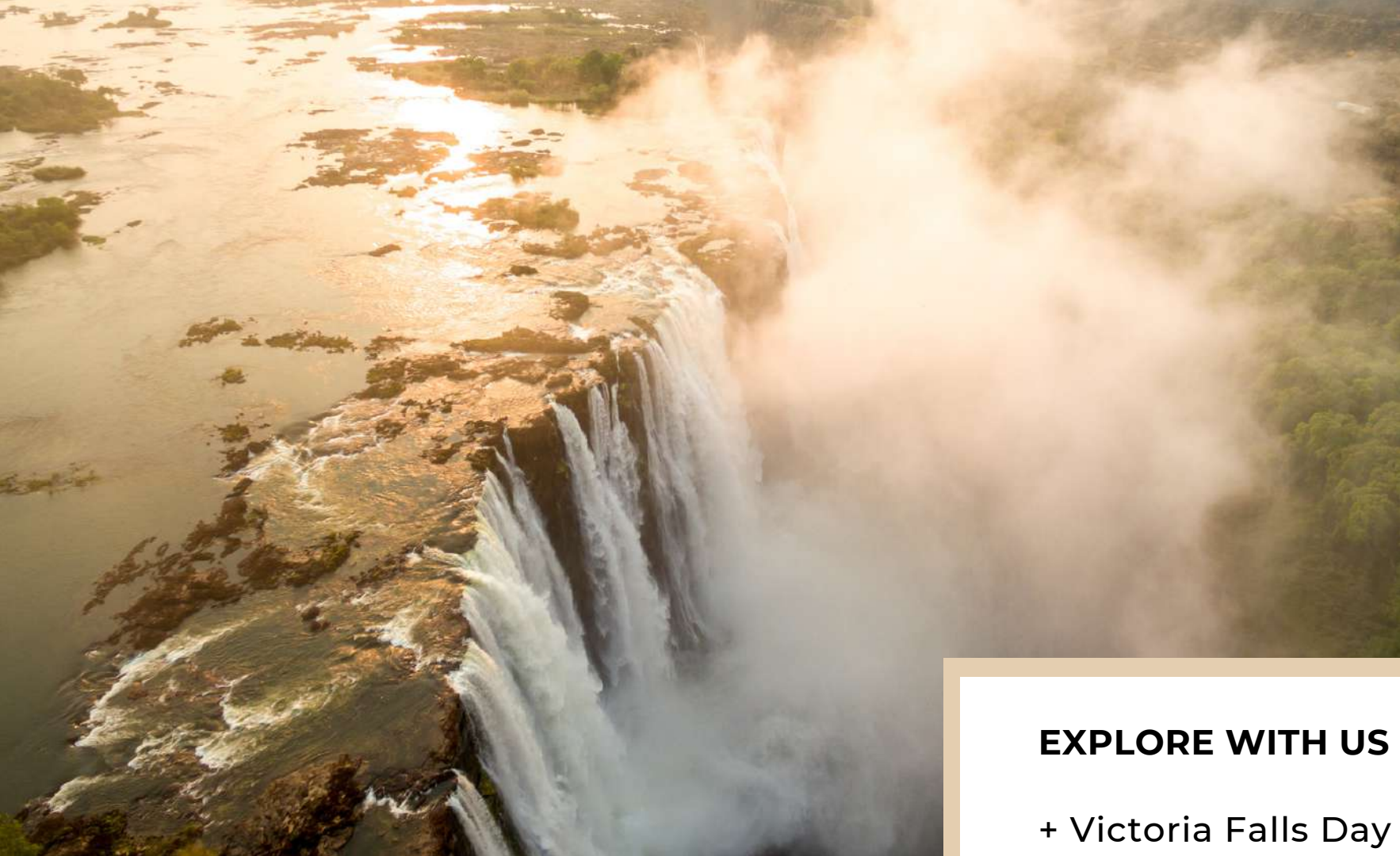
## Thank you for supporting Responsible Tourism!

*Slow. Homegrown. Handcrafted.*  
We engage with the land and our community with a slow and ethical approach. It's our responsibility to share our Africa in a way that is non-intrusive to the community and the natural environment.

### Our Commitment

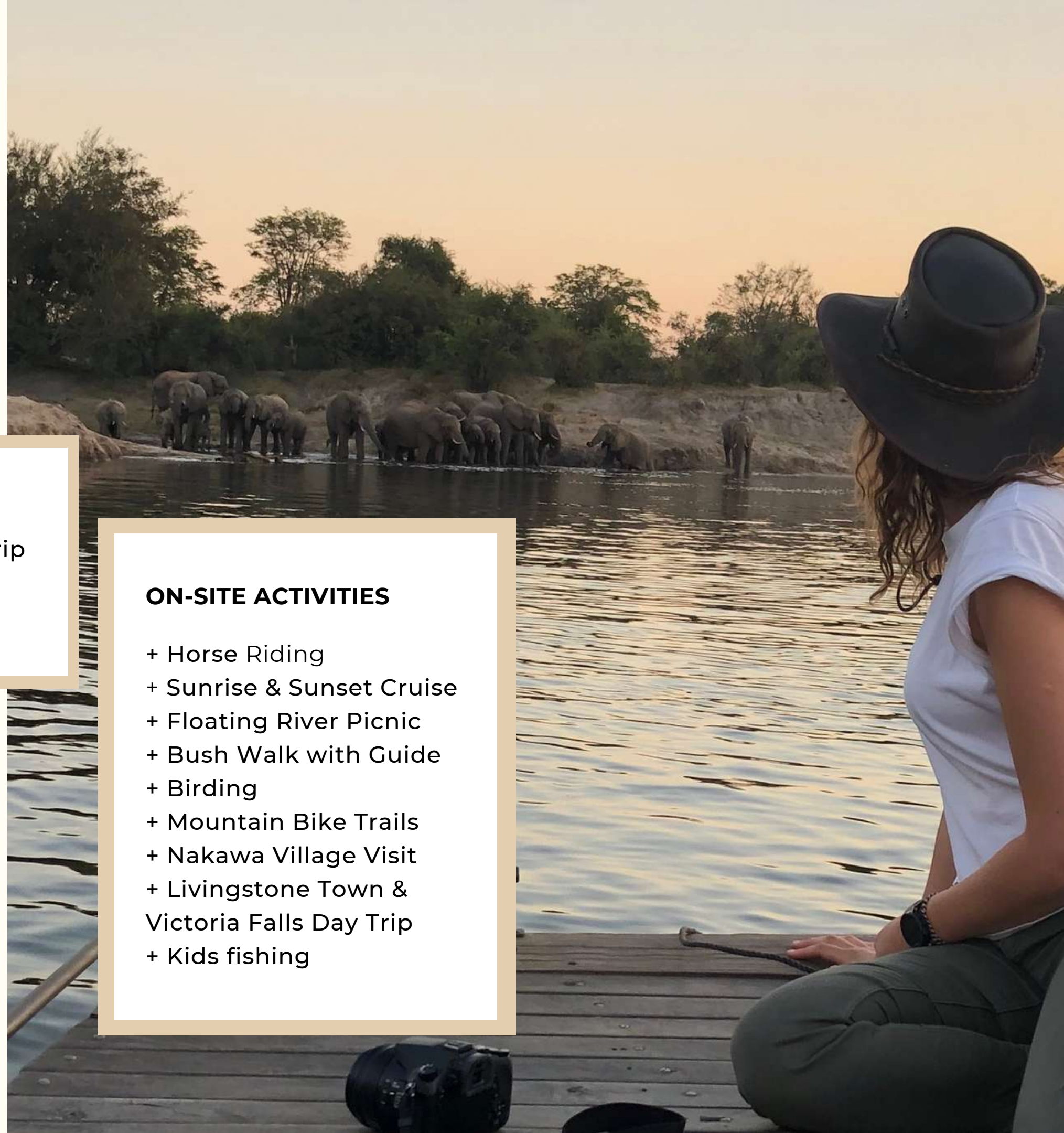
- To honour the invaluable ecosystem we call home
- No use of pesticides, herbicides or chemicals
- Ongoing reduction of single-use plastics
- Organic wherever possible, including residence guest consumables
- Homegrown foods or supporting ethical farmers and growers
- Ongoing community partnerships and initiatives through the Chundukwa Foundation
- The ethical and kind treatment of all animals





### EXPLORE WITH US

- + Victoria Falls Day Trip
- + Chobe Day Trip
- + Zimbabwe Day Trip



### ON-SITE ACTIVITIES

- + Horse Riding
- + Sunrise & Sunset Cruise
- + Floating River Picnic
- + Bush Walk with Guide
- + Birding
- + Mountain Bike Trails
- + Nakawa Village Visit
- + Livingstone Town & Victoria Falls Day Trip
- + Kids fishing

## GETTING HERE

### OPTION A - FLY INTO LIVINGSTONE, ZAMBIA

**This is our preferred airport due to accessibility!**

Guests flying into Harry Mwaanga International Airport or Livingstone Airport (LVI) will be met by our driver. It is a short 35 minute drive to the lodge.

*Livingstone Airport has excellent and frequent flight connections from South Africa, Kenya and the Middle East, as well as daily domestic flight connections with Zambia's top tourist destinations.*

Airlines flying into this airport include;

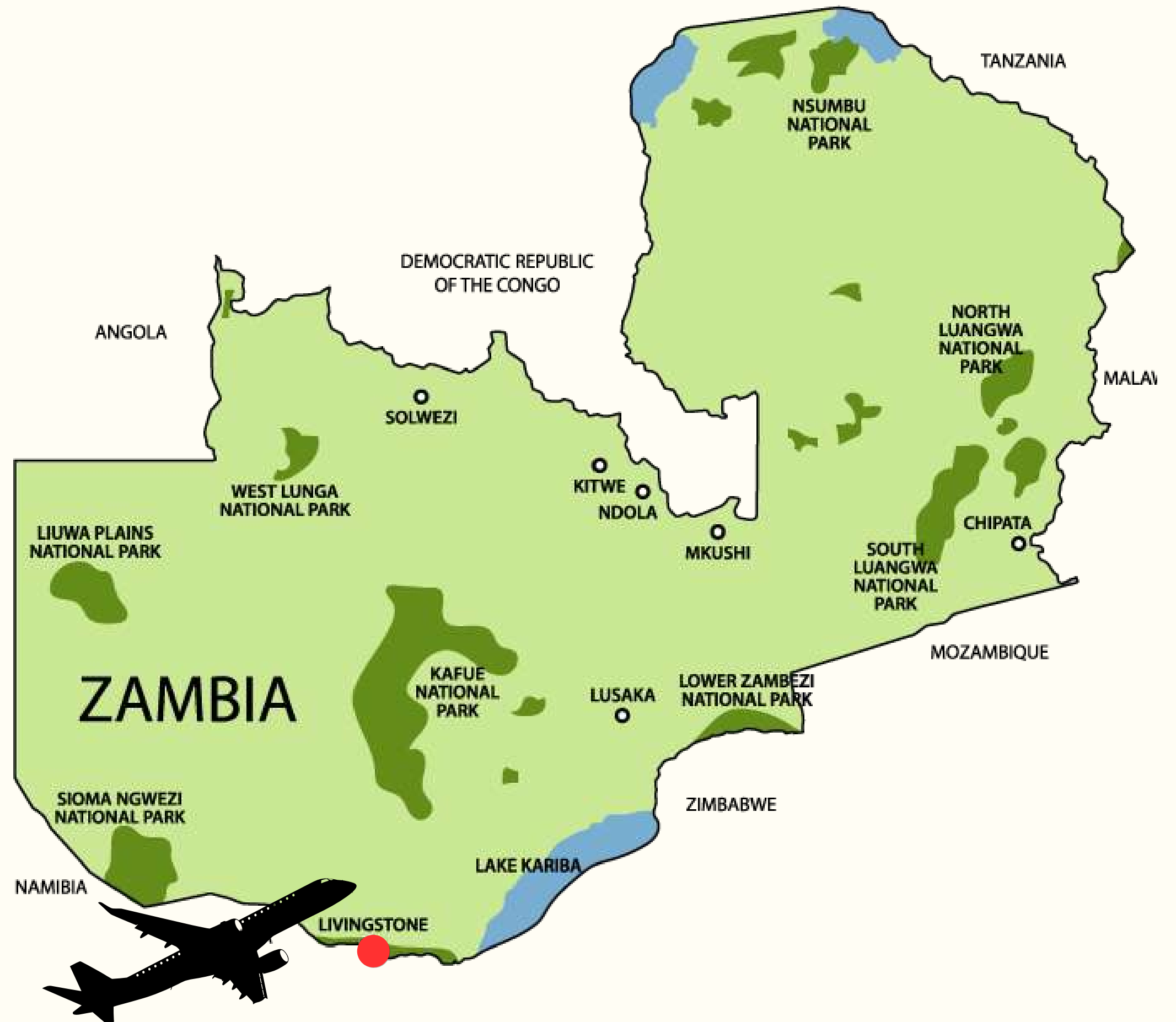
AIRLINK - Johannesburg (JNB)

AIRLINK - Nelspruit (MQP)

FLYSAFAIR - Johannesburg (JNB)

KENYA AIRWAYS - Cape Town (CPT)

KENYA AIRWAYS - Nairobi (NBO)





### OUR LOCATION

Chundukwa River Lodge is situated in Zambia along the banks of the Zambezi River, only 25kms from the historic town of Livingstone and the mighty Victoria Falls.

+ 40 min road transfer from Livingstone Airport



### VICTORIA FALLS

## GETTING HERE

### OPTION B - FLY INTO VICTORIA FALLS, ZIMBABWE

Guests flying into this airport will require a cross-border transfer. Visas may be required!

Airlines flying into this airport include;

AIRLINK - Johannesburg (JNB)  
AIRLINK - Cape Town (CPT)  
AIRLINK - Nelspruit (MQP)  
FLYSAFAIR - Johannesburg (JNB)  
CEMAIR - Johannesburg (JNB)  
FASTJET - Johannesburg (JNB)  
FASTJET - Harare (HRE)  
KENYA AIRWAYS - Cape Town (CPT)  
KENYA AIRWAYS - Nairobi (NBO)  
ETHIOPIAN AIRLINES - Addis Ababa (ADD)  
DISCOVER AIRLINES - Windhoek (WDH)







## **ZAMBIA VISA EXEMPTION**

With an open-arm policy, Zambia has waived the visa requirement for many travellers! Visa-exempt nationals are allowed to remain in the country up to 30 days with an option to extend up to 90 days.

### **The following countries are exempt from visa requirements:**

*Australia, Canada, Norway, Japan, South Korea, New Zealand, USA, UK, Austria, Belgium, Bulgaria, Croatia, Cyprus, Czech Republic, Denmark, Estonia, Finland, France, Germany, Greece, Hungary, Ireland, Italy, Latvia, Lithuania, Luxembourg, Malta, the Netherlands, Poland, Portugal, Romania, Slovakia, Slovenia, Spain, Sweden, Oman, Saudi Arabia, Iraq, Kuwait, Bahrain, Qatar, United Arab Emirates and China.*

**For all other nationalities, visa fees may apply.**

**SADC visitors = FREE visa for 30 days.**

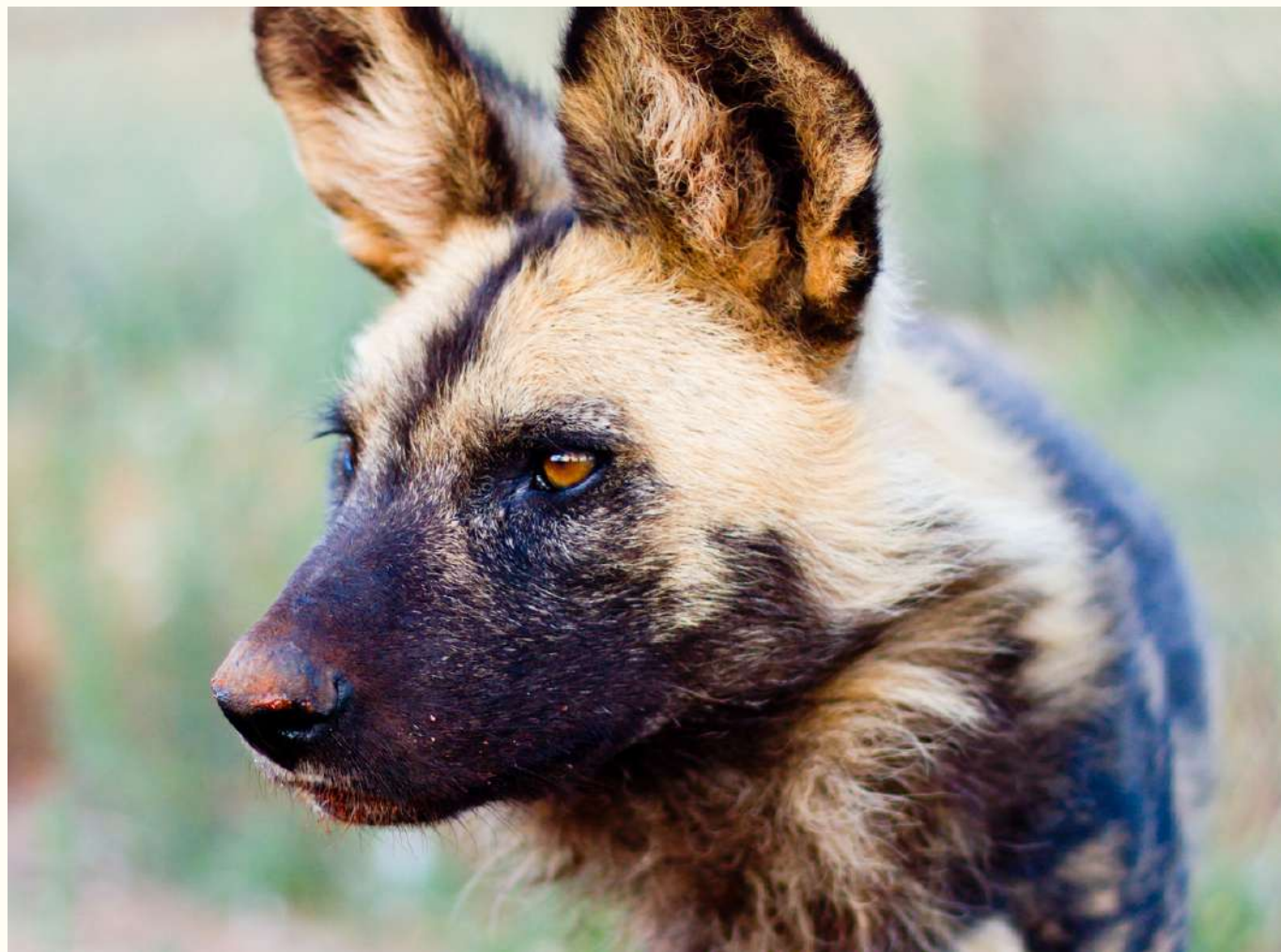
## CHUNDUKWA RIVER LODGE

### JOURNEYS IN ZAMBIA

*With quick & easy domestic flight connections to Livingstone, Lower Zambezi National Park & South Luangwa National Park, we encourage guests to consider an in-country tour.*

We've partnered with some of the most exclusive owner-run lodges in the country to showcase the very best of Zambian hospitality, wildlife and experiences.

- + Flowing South (8 Nights)
- + Wildlife & Waterfalls (9 Nights)
- + Highlights of Zambia (12 Nights)
- + Zambia Encompassed (18 Nights)





Contact Us



*Your Zambezi Escape awaits.*

CHUNDUKWA RIVER LODGE

T: +260 969 641 797  
reservations@chundukwa.com  
chundukwariverlodge.com