



DISCOVER SUYIAN CONSERVANCY

# &Beyond Suyian Lodge

Inspired by the ancient rock formations that characterise the region, Suyian Lodge seamlessly blends into its natural surroundings, embracing a unique sense of place.

DISCOVER SUYIAN CONSERVANCY  
& Beyond Suyian Lodge

# Why stay?

## 1 UNPARALLELED LOCATION

Unique to Suyian is the Rock Sanctuary, a mesmerising formation of ancient stone boulders. Facing these mighty structures on the opposite escarpment is Suyian Lodge. The lodge, and its extraordinary view of the granite kopjes and vast plains below, which includes glimpses of the Ewaso Narok River to the east and Mt Kenya in the distance, is a vital and sheltered space, offering breathtaking sunrises to early risers every morning.

## 2 UNIQUE LODGE DESIGN

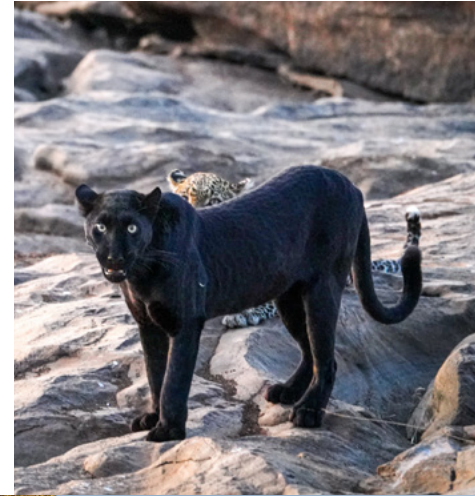
Drawing inspiration from the surrounding granite kopjes and the ever-resilient plant life that grows in between, the lodge's location and curved appearance, with plant growth atop, mirrors the opposite undulating ridge blending naturally into the environment. Set to capture the spirit of the area's nature and culture, the lodge interior reflects the Afro Wabi-Sabi sentiment of taking pleasure in the transient nature of earthly things. Subtle cultural touches inspired by the local semi-nomadic Samburu tribe infuse with modest luxury while mottled undertones pay homage to the region's most cherished wildlife.

## 3 IMMERSIVE EXPERIENCES

An array of unique adventures empowers guests to craft their ideal day amidst the iconic landscapes of this conservation haven. Choose from day and night game drives, walking safaris, camel and horseback safaris, active ranching tours, and catch-and-release fishing trips. Immerse yourself in the local culture on a community village visit or indulge in outdoor yoga, scenic helicopter flights, wellness treatments, and picnics by the river.

## 4 FAMILY FRIENDLY

The lodge features a two-bedroom Family Suite ideal for families with young children, equipped with a spacious, shared lounge area and private plunge pool. There is also one Triple Suite available on request. The main guest area has a large communal dining table with booth seating in the dining area while safari experiences can be tailored to suit guests of all ages, allowing for precious time to be enjoyed together.



# Lodge amenities



1

## DINING LOCATIONS

Enjoy your meals, celebrating the best of Laikipia's homegrown produce, in a variety of indoor and outdoor locations, including at the chef's table for a casual supper in the house kitchen, in the private dining room, or outside under the evening sky on your private expansive deck.



2

## AL FRESCO GUEST AREAS

The campfire-style sunken firepit shares breathtaking views of the vast open plains beyond, perfect for pre- and post-dinner drinks and gazing at the sunrise. While the sheltered outdoor courtyard features a central open-fire cooking area with Samburu-inspired sculptured hanging grills offering guests an experiential dining experience.



3

## SAMBURU BAR

The vibrant, circular Samburu Bar is the heart of the lodge. Offering both indoor and outdoor seating, it is the perfect setting to enjoy one of our signature cocktails and indulge in convivial conversation with other guests.



4

## POOL WITH A VIEW

Become immersed in the lodge's sparkling rim-flow swimming pool, where water cascades gently over the edge. Shaded sun loungers beckon for relaxation, while sunken daybeds offer a cool escape boasting unparalleled views.



5

## LOUNGE, LIBRARY AND MAP ROOM

Curl up with a good book in the library, which also doubles as an interpretive centre for guides and specialists to host various conservation talks and discussions. Or learn more about the region's wildlife and surrounds in the interactive map room. The sitting room also offers the ideal space to engage with guides and other guests around the built-in fireplace.

# Lodge amenities



6

## CULINARY EXCELLENCE

Indulge in unpretentious, wholesome farm-style food celebrating the best of the Laikipia region. Meals feature homegrown produce from the local shamba (kitchen herb garden) or locally sourced ingredients with a key focus on sustainable and seasonal produce. Enjoy a selection of in-house pickles, preserves and dried goods.



7

## KITCHEN HERB GARDEN

A working herb garden helps to further ensure that all lodge meals are cooked using only the freshest and most seasonal produce possible. Guests are welcome to join the lodge chefs as they collect the day's special harvest.



8

## WELLNESS CENTRE

Located on the edge of the escarpment, tucked away from the guest suites and nestled between the rocky outcrops, sits the lodge's wellness centre. There are two treatment rooms boasting striking views of the conservancy, each with a private shower, changing area and veranda, plus an additional steam room with a cold plunge pool.



9

## SAFARI SHOP

The lodge's well-stocked and sizeable Safari Shop is a celebration of East Africa's high-end interior design, safari gear, jewellery and accessories crafted by iconic Kenyan designers. The shop also includes an intimate art gallery featuring some of Kenya's most renowned as well as up-and-coming artists.



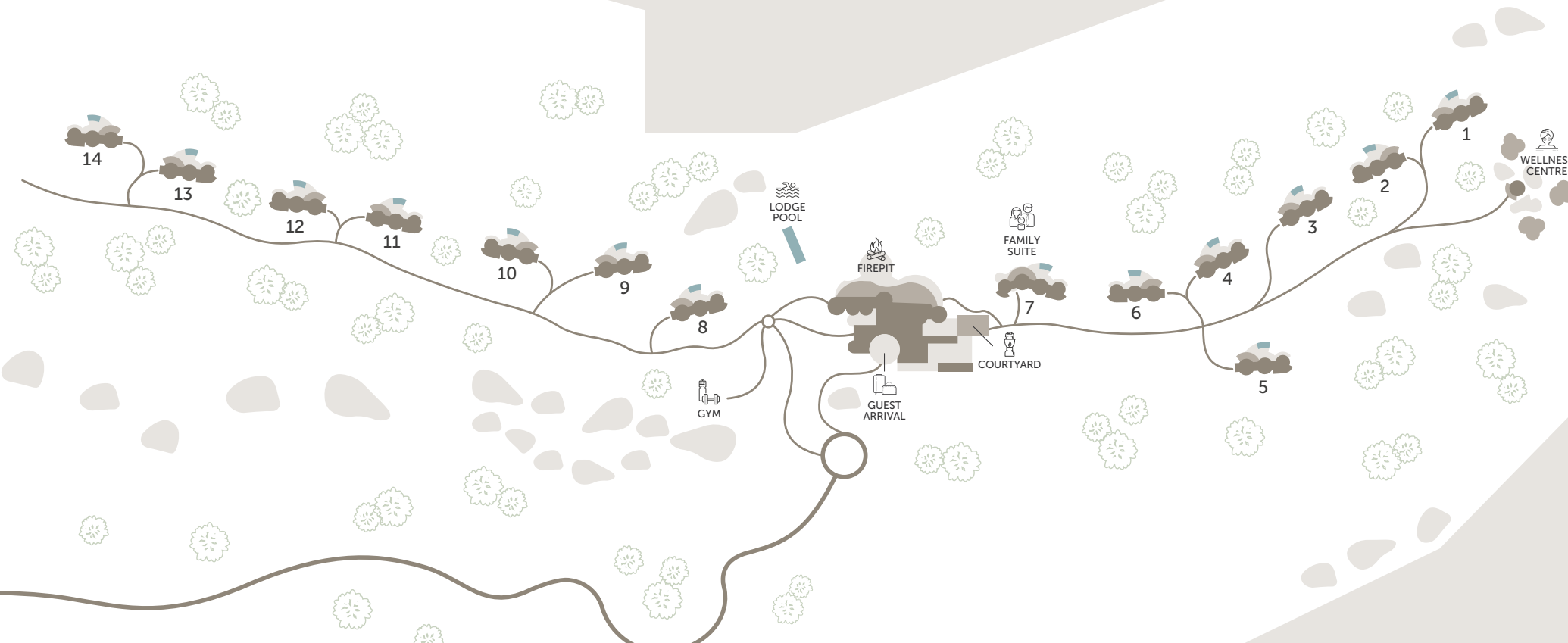
10

## GYM AND YOGA STUDIO

The compact state-of-the-art gym is situated close to the main guest area and features both cardio and strength training fitness equipment. Connected to the gym is a spacious outdoor shaded yoga studio offering twice daily yoga sessions for groups or individuals.

DISCOVER SUYIAN CONSERVANCY  
&Beyond Suyian Lodge

ROCKY RIDGE  
(KOPJES)



&BEYOND  
**Suyian Lodge**

- Road
- Path
- Private plunge pool

# Lodge overview

## LODGE

LODGE	BEYOND SUYIAN LODGE
Maximum number of guests	31
Number of rooms	14 Suites, including a two-bedroom Family Suite and 1 Triple Suite
Room types	Suite
Family accommodation	1 Family Suite & 1 Triple Suite
Pilot / Guide accommodation	1 Pilot / Guide room
Distance between rooms	15 - 20 m (49 - 65 ft)
WILDchild programme	Yes
Check-in and check-out times	14h00 / 10h00
Lodge closure	None

## DINING

Food / Dietary options	Kosher not available. Halaal and other special dietary requests are available and must be booked in advance
Private butler service	Yes
Plated service	Yes
Private dining	Yes

## PAYMENT TYPES

Credit cards accepted	Mastercard and Visa
Currency	USD are widely used, however, notes dated prior to 2006 are not accepted

## FACILITIES

Power	24-hour power (solar power backup)
Internet access	Yes, Wi-Fi throughout
Private dining room with wine store	Yes
Traditional boma	No
Outdoor dining and courtyard	Yes
Bar	Yes
Interactive kitchen	Yes
Swimming pool	Yes, lodge swimming pool and private plunge pools
Wellness offering	Spa treatments in wellness centre as well as a steam room with cold plunge pool
Fitness centre	Yes, well-equipped gym and yoga studio, plus yoga mats in each suite
Conference facilities	No
Wedding and blessings	Yes
Wheelchair accessibility	No
Complimentary laundry service	Yes
Beyond Safari Shop	Yes

DISCOVER SUYIAN CONSERVANCY  
 Beyond Suyian Lodge

# Inclusions

## RATE INCLUDES

Accommodation	✓
Three meals daily	✓
Soft drinks, house wines, local brand spirits and beers, and tea and coffee	✓
Twice-daily safari game drives	✓
Refreshments on safari game drives	✓
Scheduled yoga sessions, night drives, active ranching tours, cultural experiences, catch-and-release fishing, picnics by the river, swims in the river, safari bush walks*, camel and horseback safaris and local community village visits*	✓
One complimentary pair of SWAROVSKI OPTIK Companion 8x32 binoculars per suite to share during your stay	✓
Guides' Journal with illustrated wildlife and vegetation checklist, and an area map with illustrated Star Birds checklist	✓
WILDchild programme	✓
Laundry	✓
Transfers to and from the lodge airstrip	✓
Emergency medical evacuation cover	✓

\*These activities may incur an additional charge for groups

## RATE EXCLUDES

All items of personal nature	✗
Champagne, cognac, fine wines, premium brand spirits and cigars	✗
Private yoga sessions, helicopter flights and wellness treatments	✗
Conservation fees	✗
Safari Shop purchases	✗
Telephone calls	✗
Gratuities	✗
Weddings and blessings	✗



**NOTE: Unmanned Aerial Vehicles:** Please be advised that the use of unmanned aerial vehicles (drones) is prohibited in the conservation areas where we operate, until such a time as their impact on wildlife and anti-poaching initiatives can be assessed. This rule will apply throughout Africa, as our partners in various countries and regions have adopted a similar stance.



&BEYOND SUYIAN LODGE

# Accommodation

Nestled amidst 17,806 hectares (44,000 acres) of exclusive wilderness, the lodge boasts 14 spacious Suites, including a Family Suite.



# An ode to the region

The lodge's natural stone cladding harmonises with its surrounds, while delicate touches of local Samburu culture and the mottled colouring of the African wild dog exude from within.



PRIVATE VERANDA AND PLUNGE POOL



GUEST BATHROOM RICH IN TEXTURE



SUBTLE CULTURAL GUEST SUITE INTERIORS

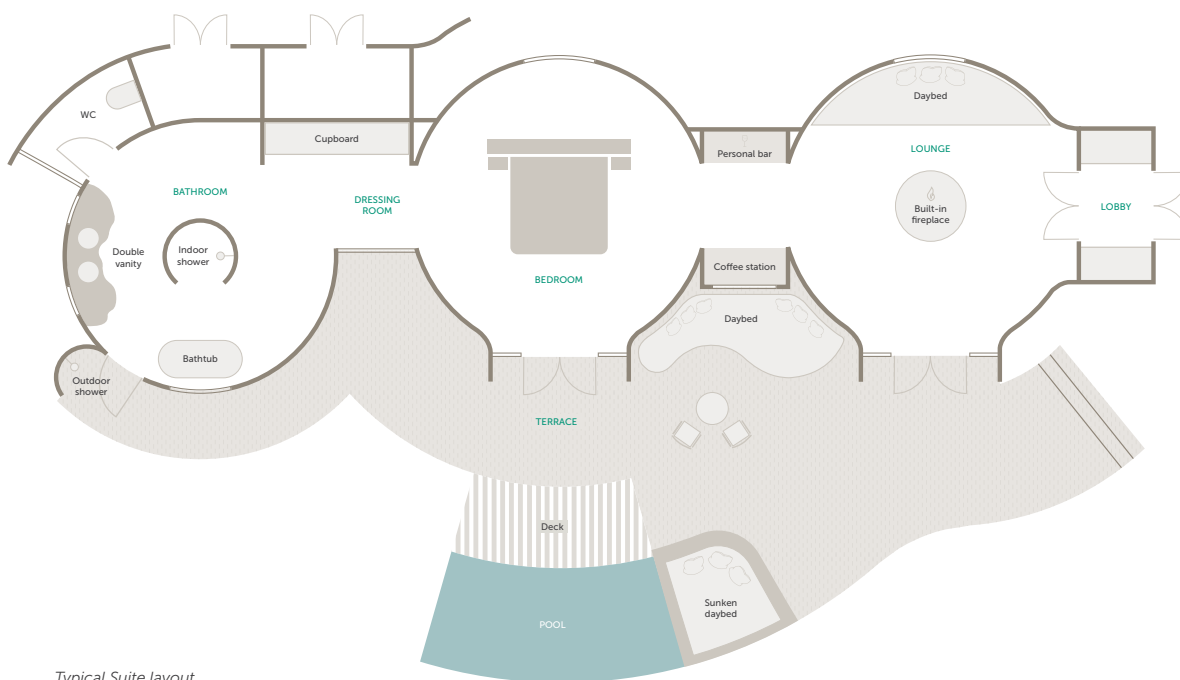
DISCOVER SUYIAN CONSERVANCY  
 Beyond Suyian Lodge Accommodation

# SUITE

13 Suites / Max. 2 guests per Suite

## SAFARI ECHOES

Mimicking the rock formations unique to the conservancy, each Suite is a true reflection of the region's remarkable biodiversity, naturally blending into its surrounds. Nestled along the escarpment, the Suites feature a luxurious bedroom, ensuite bathroom and separate lounge area, offering panoramic views from every corner. An al fresco deck and private rim-flow plunge pool with a sunken daybed and outdoor shower adds a touch of opulence within safari excellence.



Typical Suite layout

## ROOM FACILITIES

Number of suites	13
Suite size	180 m <sup>2</sup> (1 938 ft <sup>2</sup> )
Suite configuration	Bedroom in the centre, with bathroom to one side, and a lounge with a daybed on the other
Private veranda	Yes
Private plunge pool	Yes
Personal bar	Yes
Personal coffee station	Yes
Air conditioning / heating	No, as not required in this environment
Overhead fans	Yes
Mosquito nets	Yes
Bath	Yes
Indoor shower	Yes
Outdoor shower	Yes
Separate WC	Yes
Telephone	Yes
Hairdryer	Yes
Internet access	Yes
In-room safe	Yes
Plug type	UK, with adaptors USB & USB-C
Triple bed option	1 Triple Suite (16 years and under only)
Twin bed option	Yes, beds are within the same bed frame
Double bed option	Yes
Wheelchair accessibility	No

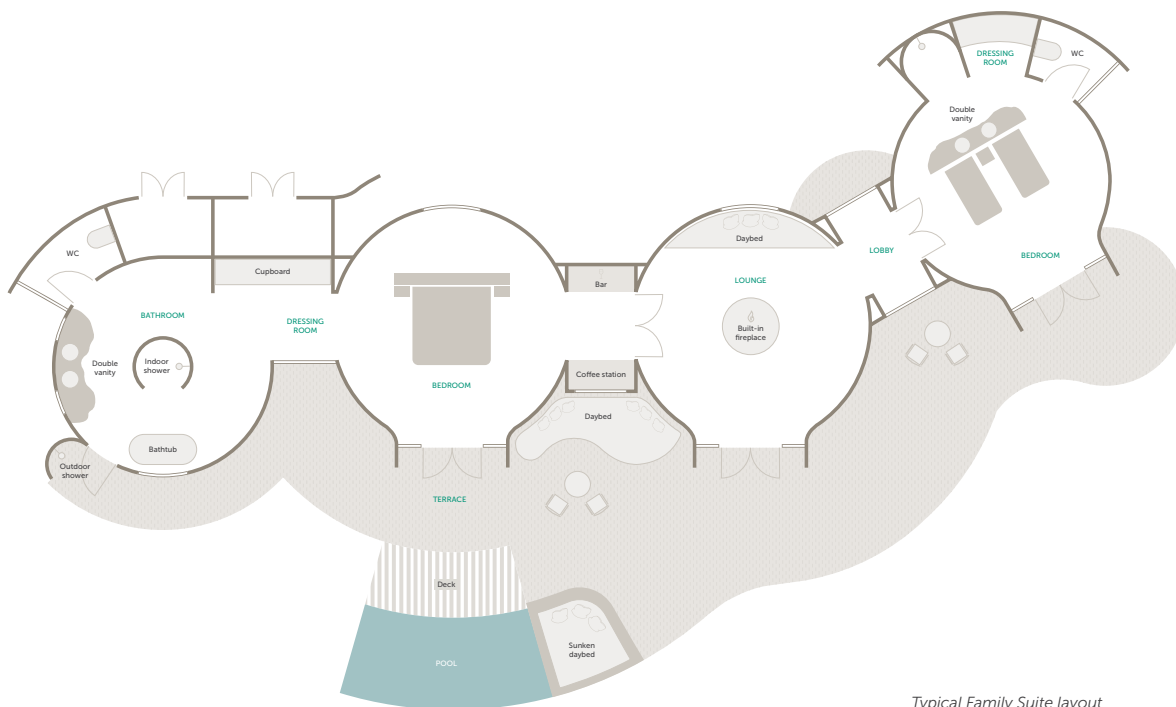
DISCOVER SUYIAN CONSERVANCY  
 Beyond Suyian Lodge Accommodation

# FAMILY SUITE

1 Family Suite / Max. 2 adults & 2 children per Family Suite

## FAMILY SAFARI CHARM

Designed to bring families close to the African bush in unparalleled luxury, the Family Suite features all the comforts of a regular Suite but with an additional, slightly smaller children’s bedroom and separate bathroom. A private al fresco deck and rim-flow plunge pool with a sunken daybed make family time on safari even more enjoyable.



Typical Family Suite layout

## ROOM FACILITIES

Number of suites	1
Suite size	205 m <sup>2</sup> (2 206 ft <sup>2</sup> )
Suite configuration	Main bedroom in the centre, with a lounge and bathroom to each side. Second bedroom with shower and separate WC
Private veranda	Yes
Private plunge pool	Yes
Personal bar	Yes
Personal coffee station	Yes
Air conditioning / heating	No, as not required in this environment
Overhead fans	Yes
Mosquito nets	Yes
Bath	Yes, in main bedroom only
Indoor shower	Yes, in both bedrooms
Outdoor shower	Yes, in main bedroom only
Separate WC	Yes, in both rooms
Suite	Yes
Hairdryer	Yes
Internet access	Yes
In-room safe	Yes
Plug type	UK, with adaptors USB & USB-C
Triple bed option	Yes, on request (16 years and under only)
Twin bed option	Yes, in the main bedroom within the same bed frame
Double bed option	Yes, in main bedroom only
Wheelchair accessibility	No

# Accommodation comparison

	SUITE	FAMILY SUITE
Number of rooms	13	1
Room size	180 m <sup>2</sup> (1 938 ft <sup>2</sup> )	205 m <sup>2</sup> (2 206 ft <sup>2</sup> )
Room configuration	Bedroom in the centre, with bathroom to one side, and a lounge with a daybed on the other	Main bedroom in the centre, with a lounge and bathroom to each side Second bedroom with shower and separate WC
Private veranda	Yes	Yes
Private plunge pool	Yes	Yes
Personal bar	Yes	Yes
Personal coffee station	Yes	Yes
Air conditioning / heating	No, as not required in this environment	No, as not required in this environment
Overhead fans	Yes	Yes
Mosquito nets	Yes	Yes
Bath	Yes	Yes, in main bedroom only
Indoor shower	Yes	Yes, in both bedrooms
Outdoor shower	Yes	Yes, in main bedroom only
Separate WC	Yes	Yes, in both bedrooms
Telephone	Yes	Yes
Hairdryer	Yes	Yes
Internet access	Yes	Yes
In-room safe	Yes	Yes
Plug type	UK, with adaptors USB & USB-C	UK, with adaptors USB & USB-C
Triple bed option	Yes, 1 Triple Suite (16 years and under only)	Yes, on request (16 years and under only)
Twin bed option	Yes, beds are within the same bed frame	Yes, in the main bedroom within the same bed frame
Double bed option	Yes	Yes, in main bedroom only
Wheelchair accessibility	No	No



DISCOVER SUYIAN CONSERVANCY

# Adventures of a lifetime

Suyian offers not only a more exclusive, somewhat wild, conservation-in-action safari journey, but also an intimate African bush experience in the form of walking, camel and horseback safaris.

# Experiences and highlights

Create your very own tailormade wildlife adventure, ensuring a truly incomparable, interpretive wilderness experience.



# 1

## TWICE-DAILY GAME DRIVES

Suyian is not only home to some of Africa's most iconic species, but also presents the opportunity to encounter rarely seen and unique Laikipia wildlife 'specials', such as the Beisa oryx, striped hyena, Laikipia hartebeest, desert warthog and black (melanistic) leopard. Enjoy exclusive twice-daily game drives during which our renowned &Beyond guides will interpret their life stories, providing guests with an intimate insight into the region.



# 2

## GUIDED BUSH WALKS

Hop off the safari vehicle and explore the Suyian Conservancy on foot, accompanied by your expert guide. This is an opportunity to truly get to know the remarkable sights and sounds of Suyian. Discover some of the often-overlooked smaller creatures found in the conservancy, animal tracks and endemic plant species or simply take in the incredible view atop a rocky outcrop in the hopes of spotting a Verreaux eagle or fan-tailed raven.



# 3

## CAMEL AND HORSEBACK SAFARIS

Embark on an unforgettable exploration of Laikipia, just as intrepid adventurers of old traversed these wild frontiers. Journey on horseback or by camelcade, led by a seasoned local guide who will unveil the region's hidden gems and marvel at captivating landscapes on the conservancy and neighbouring Suyian properties.



# 4

## YOGA SESSIONS

Unwind in the spacious, covered yoga studio, located next to the lodge gym where twice-daily yoga sessions cater to both individual and group preferences. For an invigorating reflective journey, join a sunrise, sunset or full moon yoga session atop a natural rock platform nestled within the nearby kopjes. Scheduled and private\* sessions available.

# Experiences and highlights



5

## PICNIC AND SWIM BY THE RIVER

After an eventful day exploring the conservancy, cool down and relax in the palm-fringed Ewaso Narok River under the watchful eye of your guide. Tuck into a small yet decadent picnic alongside the flowing water for an unforgettable experience.



6

## CATCH-AND-RELEASE FISHING

Indulge in the thrill of catch-and-release fishing along the Ewaso Narok River or cast your line at the numerous waterholes scattered around the conservancy. For the truly intrepid, an expedition to the legendary Lake Turkana awaits, promising an unforgettable angling adventure.



7

## HELICOPTER FLIGHTS\*

Not only does a scenic helicopter flight provide aerial views of the region's most diverse landscapes, such as Suguta Valley, Ololokwe and Mt Kenya, but also offers access to some otherwise inaccessible hidden gems that are both ecologically and culturally significant.



8

## ACTIVE RANCHING

What was once an area of huge livestock ranches, today Suyian combines rapidly evolving conservation practices with community development creating a safe space for people and wildlife to coexist. Spend the morning with the local herders as they start their day walking their cattle on the rotational grazing rounds. There are approximately 2 500 to 3 000 cattle that form part of this unique biodiverse ecosystem.



9

## LOCAL COMMUNITY VILLAGE VISITS

Community village visits and interactions with local pastoral tribes, such as the Pokot and Samburu people, add to the conservancy's unique offering, allowing you to become part of a cultural experience that has remained unchanged for thousands of years.

DISCOVER SUYIAN CONSERVANCY  
Adventures of a Lifetime

# Seasonal highlights

Suyian is an exceptional year-round destination, offering unforgettable once-in-a-lifetime attractions and activities every season.

## YEAR-ROUND ACTIVITIES

- |                           |                             |                                  |
|---------------------------|-----------------------------|----------------------------------|
| ✓ Twice-daily game drives | ✓ Catch-and-release fishing | ✓ African wild dog tracking      |
| ✓ Night drives            | ✓ Heli-trips*               | ✓ Ewaso Narok River picnic*      |
| ✓ Active ranching*        | ✓ Wellness treatments       | ✓ Ewaso Narok River swimming*    |
| ✓ Camel safaris*          | ✓ Yoga                      | ✓ Bush dining*                   |
| ✓ Horseback safaris*      | ✓ WILDchild experiences     | ✓ Citizen science research       |
| ✓ Local community visits  | ✓ Guided bush walks*        | ✓ Samburu naturalist experiences |

*\*These activities are weather dependent*





DISCOVER SUYIAN CONSERVANCY  
Adventures of a Lifetime

# A day in the life

## OF A GUEST

From the moment you wake up, your &Beyond experience is tailored to your interests and needs. Your butler and guide will discuss the day with you, including timings and experiences, ensuring your day is as extraordinary as the location you are visiting. Here's what to expect on an average day on safari in Kenya.

### TIMING

### EXPERIENCE

Early morning	Wake-up call from your butler, with a pre-ordered health juice or early-morning tea or coffee
Early morning	Get ready for the day by enjoying a range of early morning activities, including a safari game drive, bush walk, yoga session or helicopter flight
Morning to mid-morning	Enjoy breakfast at the lodge, served in the dining area, at the chef's table or in the privacy of your suite
Mid-morning to midday	Spend your morning at leisure or go on a mid-morning bush walk, enjoy a yoga session, or have a relaxing massage treatment
Midday to mid-afternoon	Tuck into lunch at the lodge, served on the veranda, next to the lodge swimming pool or in the privacy of your suite
Mid-afternoon	Head out on a mid-afternoon activity, such as a horseback or camel safari or local community village visit
Mid-afternoon to late afternoon	Indulge in afternoon tea, sipping on chai tea warmed on the Aga stove from the lodge's house kitchen, accompanied by a selection of delights
Late afternoon	Explore the reserve on an afternoon to evening game drive*, bush walk or horseback or camel safari  <i>*Afternoon game drives can easily be extended into an exciting night game drive – please keep in mind all guests must be back at the lodge no later than 21h00</i>
Evening	Reminisce about the day over dinner, served in the lodge's dining area, in the al fresco courtyard or next to the swimming pool

*Timings and guest experiences are guidelines only  
Some experiences are at an additional cost and weather dependent*





DISCOVER SUYIAN CONSERVANCY

# Kenya Signature Offers

Designed entirely with you in mind, discover our favourite Kenya signature offers, providing you with more exceptional experiences and savings.

# Kenya Signature Offers

Whether you're a solo traveller, a couple wanting a romantic escape or a family looking to reconnect, our expert Travel Specialists are able to recommend the best itinerary, as well as offers that suit your travel needs.

## STAY LONGER FOR LESS IN KENYA



Based per person per night at any combination of our Kenya camps staying longer than 3-nights

## MILESTONE CELEBRATIONS OFFER



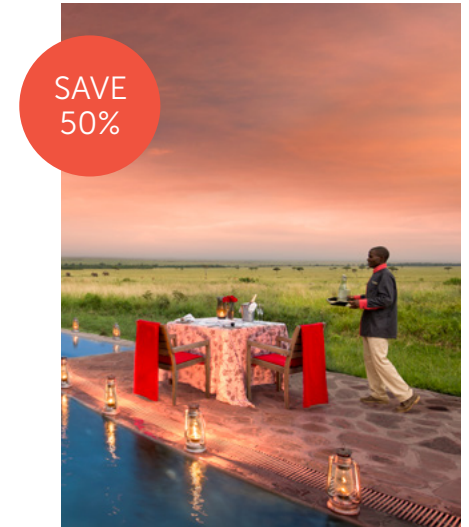
Celebrate a special birthday or anniversary with us and save when staying at any of our lodges or camps

## FAMILY SAFARI OFFER



For children under the age of 16 staying at any of our Africa lodges and camps

## SAFARI HONEYMOON



For newlywed couples at a selection of our safari lodges and camps, valid for six months after the marriage date

---

Visit our exclusive &Beyond offers for more information or speak to your preferred Travel Specialist

---

# Kenya Signature Offers

## FLY ME AROUND EAST AFRICA

STAY 7+  
NIGHTS  
& SAVE



Save up to USD 4 283 per person, per 7-night stay (2024)\* and benefit from flight savings, plus a wide range of included accommodation and activities per person

*\*6-night stay in 2025 (excl. &Beyond Kichwa Tembo Tented Camp, Mnemba Island, and Suyian Lodge)*

## FLY ME TO THE MARA

FREE  
RETURN  
FLIGHTS



Stay 4 nights at &Beyond Kichwa Tembo Tented Camp or 3 nights at &Beyond Bateleur Camp, and enjoy free return flights between the Masai Mara and Nairobi's Wilson Airport

## STAY 4, PAY 3 AT KICHWA TEMBO

SAVE  
25%



Stay 4 nights at &Beyond Kichwa Tembo Tented Camp and only pay for three nights

---

Visit our exclusive &Beyond offers  
for more information or speak to your  
preferred Travel Specialist

---

**GENERAL ENQUIRIES**

+27 11 809 4300

[contactus@andBeyond.com](mailto:contactus@andBeyond.com)

Nairobi Office: +254 73 686 1804

**REGIONAL ENQUIRIES**

Africa: [africa.reservations@andBeyond.com](mailto:africa.reservations@andBeyond.com)

Asia: [southasia.reservations@andBeyond.com](mailto:southasia.reservations@andBeyond.com)

South America: [southamerica.reservations@andBeyond.com](mailto:southamerica.reservations@andBeyond.com)

**PRESS ENQUIRIES**

[media@andBeyond.com](mailto:media@andBeyond.com)

**TRAVEL TRADE**

[enquiry@andBeyond.com](mailto:enquiry@andBeyond.com)

  
andBEYOND



[@andbeyondtravel](https://www.instagram.com/andbeyondtravel)  
[#seewhatliesbeyond](https://www.instagram.com/andbeyondtravel)

[andBeyond.com](https://www.andbeyond.com)