



The Oyster Box

South Africa's Most Cherished Hotel



GROUP ACCOMMODATION

BE OUR GUEST

The Oyster Box offers exceptional value and generous hospitality through many complimentary touches that are extended to all group reservations of 10 or more rooms.

Our complimentary amenities include:

- Dedicated groups coordinator, to assist with all requirements from start to finish.
- Preferential group rate.
- One complimentary room including breakfast for every 10 full paying rooms. A maximum of two complimentary rooms per group.
- One complimentary upgrade to one of the Junior Suites is applicable for 10 or more full paying rooms.
- Private check-in desk.
- Complimentary welcome drink on arrival.
- Personalised welcome card addressed to each guest with a welcome amenity.
- Customised menus can be created for your group.
- Complimentary WiFi access throughout the hotel.
- Complimentary shuttle services to and from the Gateway Shopping Centre on availability from 09:00 - 20:00.
- Access to the hotel's fitness centre.
- Use of The Spa at The Oyster Box's facilities – Tranquillity lounge, authentic Oriental hammam, plunge pool.
- Complimentary secure parking.
- Daily local newspaper.
- 24-hour room and laundry services.
- Access to the 24-seater cinema with screenings from 10h00 to 22h00.
- Access to our Holiday Club from 10h00 to 19h00 daily for groups travelling with children.



ABOUT THE OYSTER BOX

From the moment guests enter the lobby, the grandeur of The Oyster Box is striking. The lavish interior spaces are adorned with attractive original artwork and unique furnishings. The history and heritage of The Oyster Box is woven into every part of the property, most noticeably through the welcoming and passionate team.

The Oyster Box rests among beautiful tropical gardens, making it an oasis of tranquillity and natural beauty with stunning views of the Indian Ocean. You will find us a mere three hours south of the magnificent Drakensberg Mountains and west of KZN's finest game reserves - renowned for their incredible game viewing, culturally rich traditions, and conservation history.

HOTEL FACILITIES AND SERVICES



The Spa



Fitness Centre



2 Swimming Pools



Cinema (24 Seats)



Kids Holiday Club



Complimentary
Valet Parking



24-Hour Room
Service And Laundry



Complimentary Wifi
Throughout Hotel



Direct Access
To The Beach



Concierge Service
Transfers And Sightseeing
Tours Available On Request



Complimentary Shuttle
Service To And From The
Gateway Theatre Of Shopping



ACCOMMODATION

We have a total of 86 rooms and suites, either sea or garden-facing, individually styled in splendid luxury with caring detail, elegant amenities and thoughtful touches.



8 CLASSIC GARDEN-FACING ROOMS

All overlook the hotel's lush tropical gardens filled with the chatter of monkeys and birds.

Average size: 32 sq metres / 344 sq feet



19 CLASSIC SEA-FACING ROOMS

All have their own private balcony with views of Umhlanga's iconic lighthouse and breathtaking coastline.

Average size: 27 sq metres / 291 sq feet



25 LUXURY SEA-FACING ROOMS

Spacious and light with double vanities, a separate shower, private balconies and exceptional ocean views.

Average size: 31 sq metres / 334 sq feet



3 JUNIOR CABANAS

These beautiful Junior Cabanas are located on the lower ground level with stunning king size beds with an en-suite bathroom offering a shower and single vanity.

Average size: 36 sq metres / 388 sq feet



4 SEA-FACING CABANAS

Located on the ground floor, a step away from the water's edge, with colonial king-size four-poster beds and individual terraces overlooking the Indian Ocean.

Average size: 36 sq metres / 388 sq feet



1 PARAPLEGIC CABANA

This spacious cabana features a comfortable lower king-size bed and is located on the ground floor in close proximity to the outlets. It has an enclosed terrace with ramp access to our Ocean Terrace restaurant and main pool overlooking the ocean. The ensuite bathroom is equipped with a bath and open shower.

Size: 36 sq metres / 388 sq feet

Maximum occupancy: Two persons



5 SEA-FACING FAMILY ROOMS

Alongside the master bedroom, the five dedicated Family Rooms include an additional second bedroom for children. Four rooms are fitted with bunk beds, while the fifth features a loft with twin beds.

Average size: 36 sq metres / 388 sq feet

Maximum occupancy: Two adults and two children (12 years and younger).



5 LUXURY SEA-FACING SUITES

The Luxury Sea-Facing Suites have a spacious master bedroom, exquisite separate lounge and endless sea views.

Average size: 55 sq metres / 592 sq feet



2 DELUXE SEA-FACING SUITES

Within easy reach of the beach these elegant ground level suites have their own private plunge pool, terrace, bedroom and separate lounge.

Average size: 78 sq metres / 840 sq feet



8 SUPERIOR GARDEN VILLAS

Set back from the main buildings, nestled in the hotel's tropical gardens and close to the Spa, each villa has its own private plunge pool with a terrace, lounge and two separate bathrooms. Four of the eight villas can be converted into a 2-bedroom villa, with connecting Garden Villa Lofts.

Average size: 105 sq metres / 1 130 sq feet



4 GARDEN VILLA LOFTS

Creatively designed, the Garden Villa Lofts can be converted into a 2-bedroom villa by connecting with one of the Superior Garden Villas.

Average size: 64 sq metres / 689 sq feet

ROOM FACILITIES

Tea and coffee making facilities

Mini-bars

Complimentary internet and WiFi

Hairdryers

Umbrellas (rain)

Two individual telephone lines

Individual air-conditioning and overhead fans

Built-in international adaptors

Electronic safe

Bathrobes and slippers

Turndown gifting and mineral water nightly

Daily newspapers

Children's menus, gowns and slippers

High chairs and car seats (on request)

Nespresso Machine

Beach towels and umbrellas (on request from the pool bar)





THE PRESIDENTIAL SUITE

Perfectly poised overlooking the magnificent Indian Ocean, The Oyster Box reveals its most precious 'pearl'.

Split over two levels, with private access and elevator, the stylish 450 square metre Presidential Suite is the epitome of luxury and comfort.

The open-plan ground floor, including a bar and kitchenette, seamlessly links the living and dining areas. Furnishings and finishes are plush with white floors, marble and white Caesar stone throughout, and a Venetian glass chandelier in the dining room, with seating for eight guests.

The master bedroom incorporates a comfortable lounge area, intimate study and walk-in closet. Indulgent luxury is yours in the 'his' and 'hers' marble bathrooms.

An ensuite double bedroom is located downstairs.

A private rim-flow swimming pool on the expansive, secluded patio with unending sea views provides both privacy and a perfect place to entertain; meals are prepared in personal consultation with our chef.

PRESIDENTIAL CLASSIC ROOM

If required, this room can connect to the Presidential Suite with its own private entrance.

Average size: 43 sq metres / 463 sq feet



INCLUDED IN THE PRESIDENTIAL SUITE:

Personal butler service throughout your stay

Airport transfers in a luxury vehicle, including a personal meet and greet from your butler

Express check-in in your suite with a tantalizing bottle of French Champagne accompanied by canapés and snacks

High Tea stands served in your suite each afternoon

Cocktail and canapés served in your suite each afternoon or evening

A South African meat or seafood braai experience

In-spa or in-suite 60 minute Hot Lava Shell Massage per adult once during your stay

Luxurious bath setup

Breakfast including fresh oysters and delectable MCC in your suite

Complimentary shuttle within a 5km radius of The Oyster Box



PRESIDENTIAL SUITE FACILITIES:

2 Bedrooms - en suite

Private rim-flow pool with 180° ocean views

A selection of teas and coffees

Nespresso machine

Private study/office

Complimentary internet and WiFi

Flatscreen television in every room

Electronic safe

Built-in international adaptors

Three fireplaces

Grand piano





MEETINGS AND EVENTS AT THE OYSTER BOX

Whether it's a company conference, C-suite strat-session or an important client dinner; the five-star facilities and convenient location of The Oyster Box make it the ideal venue for business events in KwaZulu-Natal.

Aside from the array of entertainment venues – including exclusive private dining options – the hotel offers five purpose-built meeting rooms with the flexibility to suit your needs. Browse the venues below for more specific information.

A dedicated team of professional coordinators are on standby to efficiently take care of every detail to ensure total success.



THE PEARL ROOM

With its mirrored walls and striking chandeliers of hand-blown Venetian crystal, The Pearl Room is a remarkable function space perfectly suited to glamorous weddings and elegant events. The sea views, imbued with an air of opulence, are as eye-catching as the interior décor, making this one of the most sought-after venues at The Oyster Box.

ROOM DIMENSIONS

Floor / level	First Floor
Room length	16 meters
Room widthW	13 meters
Room height	3.05 meters
Square meters	208 sq m
Floor covering	Porcelain Tiles
Screen size	2.490m x 1.450m
Screen quantity	3 x screens

FACILITIES

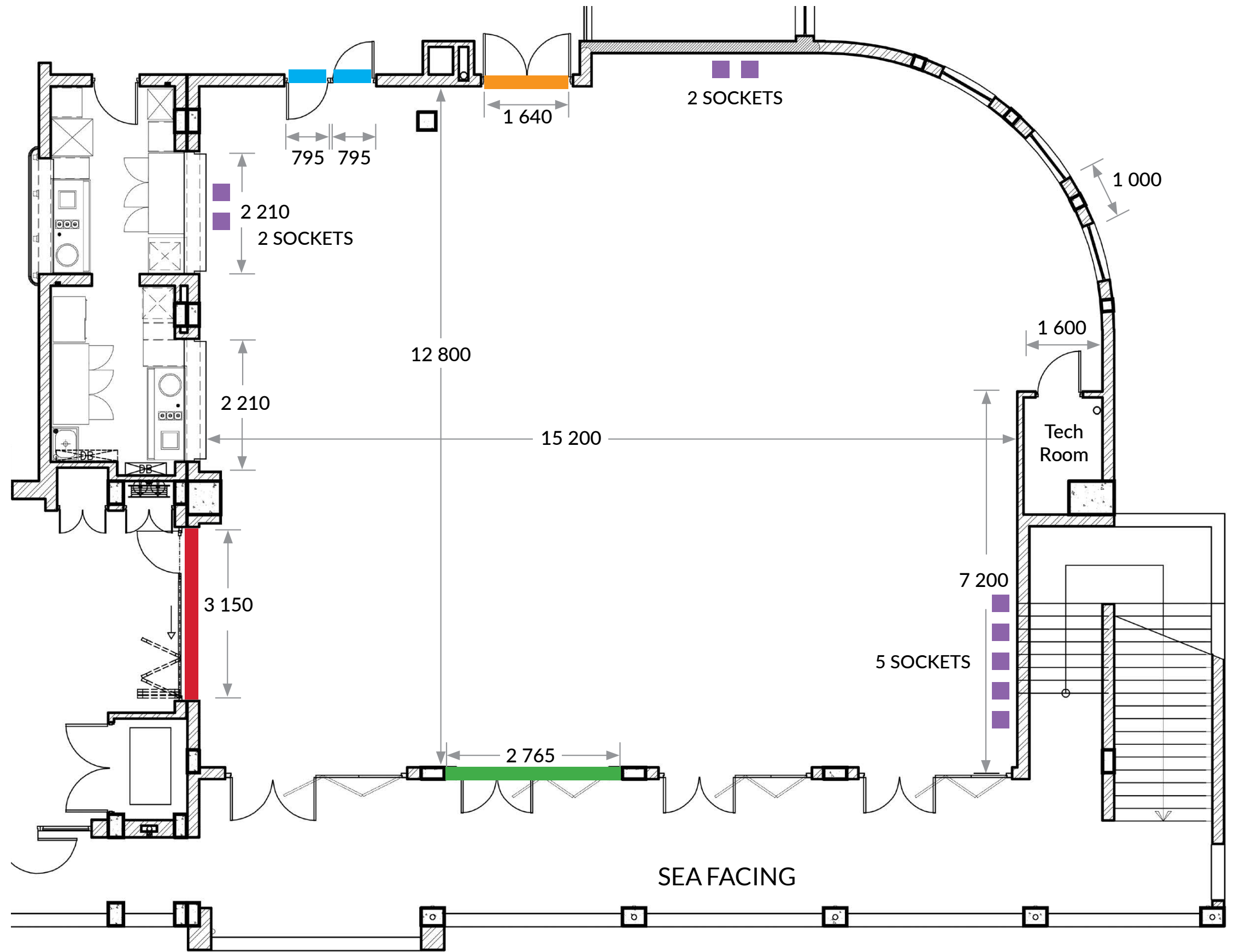
- High-quality white tablecloths and napkins
- Wooden chairs with white cushioned seats
- Crockery and cutlery
- Bespoke menus for corporate, social or unique events
- Standard audio-visual technical
- Waitrons and bar staff

SEATING CAPACITIES

Banquet	Boardroom	Cabaret	Classroom	Reception	Theatre	U-Shape
120	40	60	100	200	150	40

FLOOR PLAN

■ Main Door 1	640 mm
■ Service Door (in)	795 mm
■ Service Door (out)	795 mm
■ Separation Door	3 150 mm
■ Patio Doors	2 765 mm
Windows	1 000 mm
Tech Room 1	600 mm
Pearl Room Length	15 200 mm
Pearl Room Width	12 800 mm
Chandelier height 2	180 mm
Ceiling height 2	660 mm
Mirrored Wall 7	200 mm
Bar Doors Shutters	2 210 mm
■ Sockets (plug points)	





THE SHELL ROOM

The sea views are the star attraction here, stretching away beyond the private terrace overlooking the iconic Umhlanga lighthouse. The Shell Room is a venue best suited to medium gatherings but can also be combined with The Pearl Room to create a larger, flowing function space.

ROOM DIMENSIONS

Floor / level	First Floor
Room length	14.85 meters
Room width	6.2 meters
Room height	3.4 meters
Square meters	64 sq m
Floor covering	Porcelain tiles
Screen size	2.490m x 1.450m
Screen quantity	1 x screens

FACILITIES

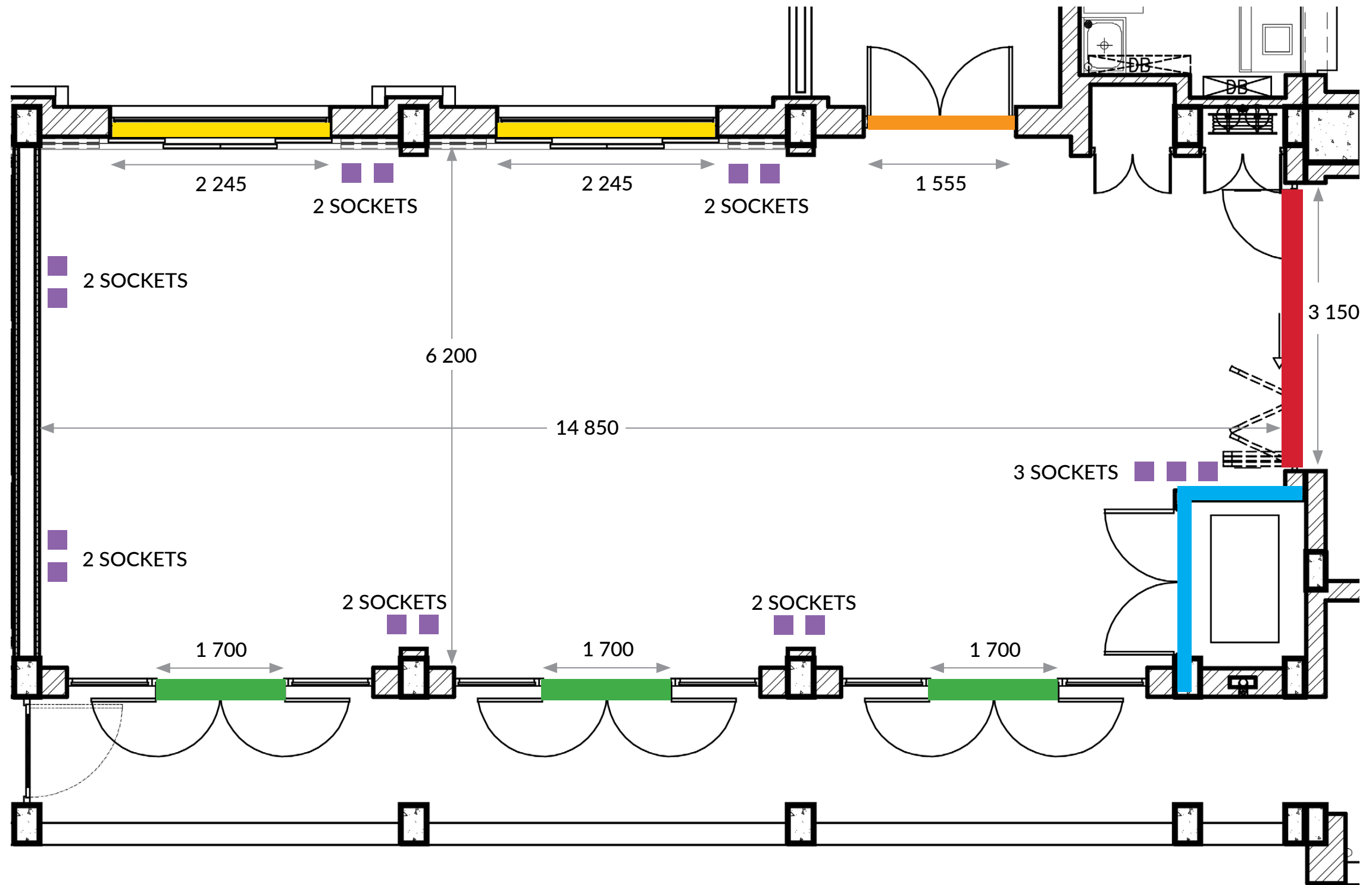
- High-quality white tablecloths and napkins
- Wooden chairs with white cushioned seats
- Crockery and cutlery
- Bespoke menus for corporate, social or unique events
- Standard audio-visual technical
- Waitrons and bar staff

SEATING CAPACITIES

Banquet	Boardroom	Cabaret	Classroom	Reception	Theatre	U-Shape
48	21	-	32	-	50	24

FLOOR PLAN

Main Door 1	555 mm
Shutter Windows	2 245 mm
Separation Door	3 150 mm
Patio Doors	1 700 mm
Aircon Room	
Shell Room Length	14 850 mm
W idth	6 200 mm
Chandelier height	2 180 mm
Ceiling height	3 127 mm
Cabinet height	2 800 mm
Sockets (plug points)	





THE DURBAN JULY ROOM

In celebration of Africa's premier horseracing event, The Durban July Room walls are adorned with photographs, souvenirs, and memorabilia surrounding the history and pageantry of this iconic event. This character-filled and versatile space works seamlessly for corporate workshops, media gatherings, meetings and cocktail functions.

ROOM DIMENSIONS

Floor / level	First Floor
Room length	10.4 meters
Room width	10.3 meters
Room height	3.4 meters
Square meters	107 sq m
Floor covering	Carpet
Screen size	2.490m x 1.450m
Screen quantity	2 x screens

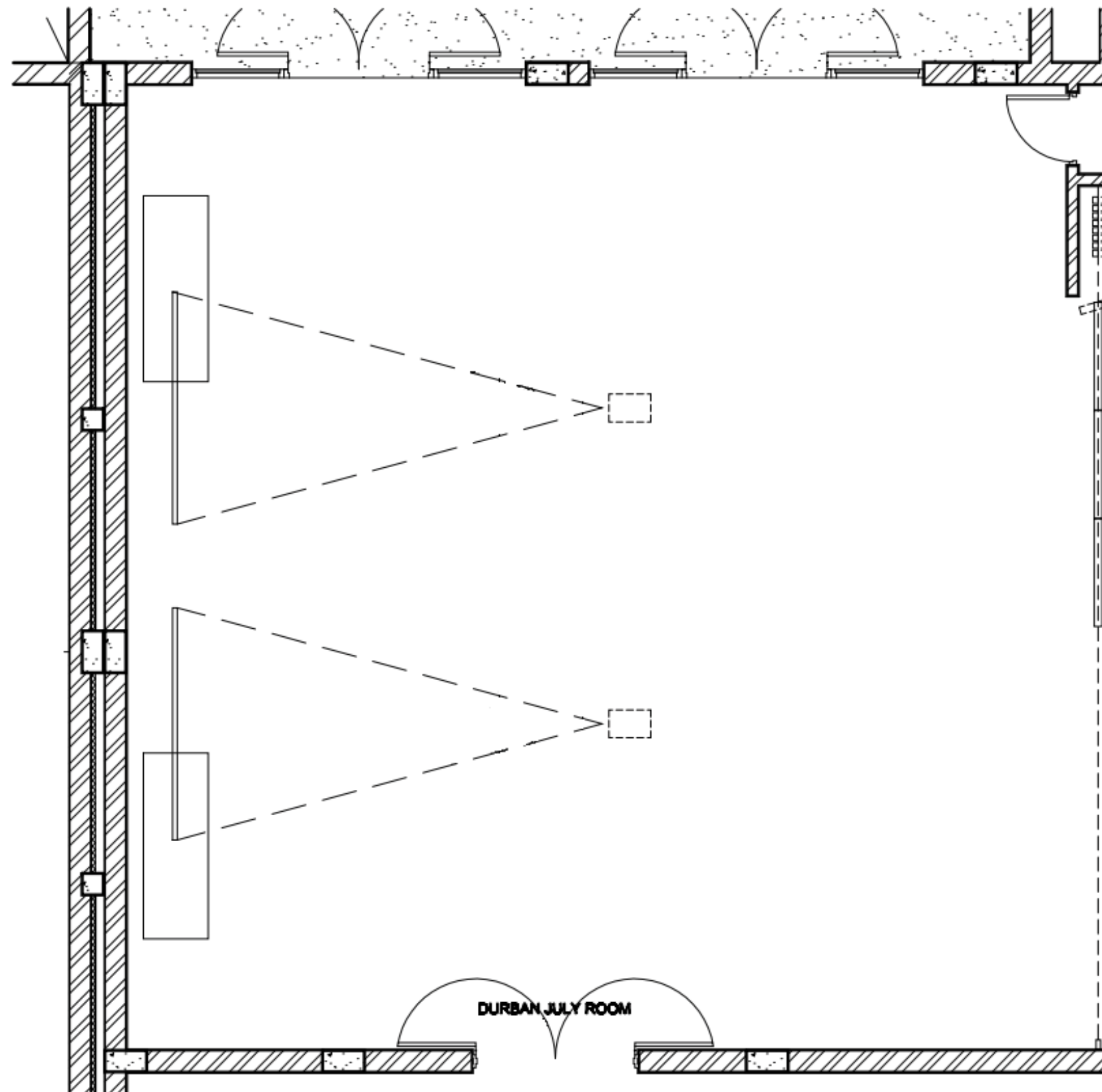
FACILITIES

- High-quality white tablecloths and napkins
- Wooden chairs with white cushioned seats
- Crockery and cutlery
- Bespoke menus for corporate, social or unique events
- Standard audio-visual technical
- Waitrons and bar staff

SEATING CAPACITIES

Banquet	Boardroom	Cabaret	Classroom	Reception	Theatre	U-Shape
60	25	30	40	80	70	25

FLOOR PLAN





THE UNION CASTLE

Decorated with memorabilia from the famed Union Castle ships that used to ply this coastline in the mid-20th century, the charming Union Castle Room can be set up as a boardroom or dining venue, making it ideal for C-suite strat sessions, corporate away-days and memorable private dining.

ROOM DIMENSIONS

Floor / level	First Floor
Room length	5.4 meters
Room width	8.2 meters
Room height	3.4 meters
Square meters	44 sq m
Floor covering	Carpet
Screen size	2.490m x 1.450m
Screen quantity	1 x screens

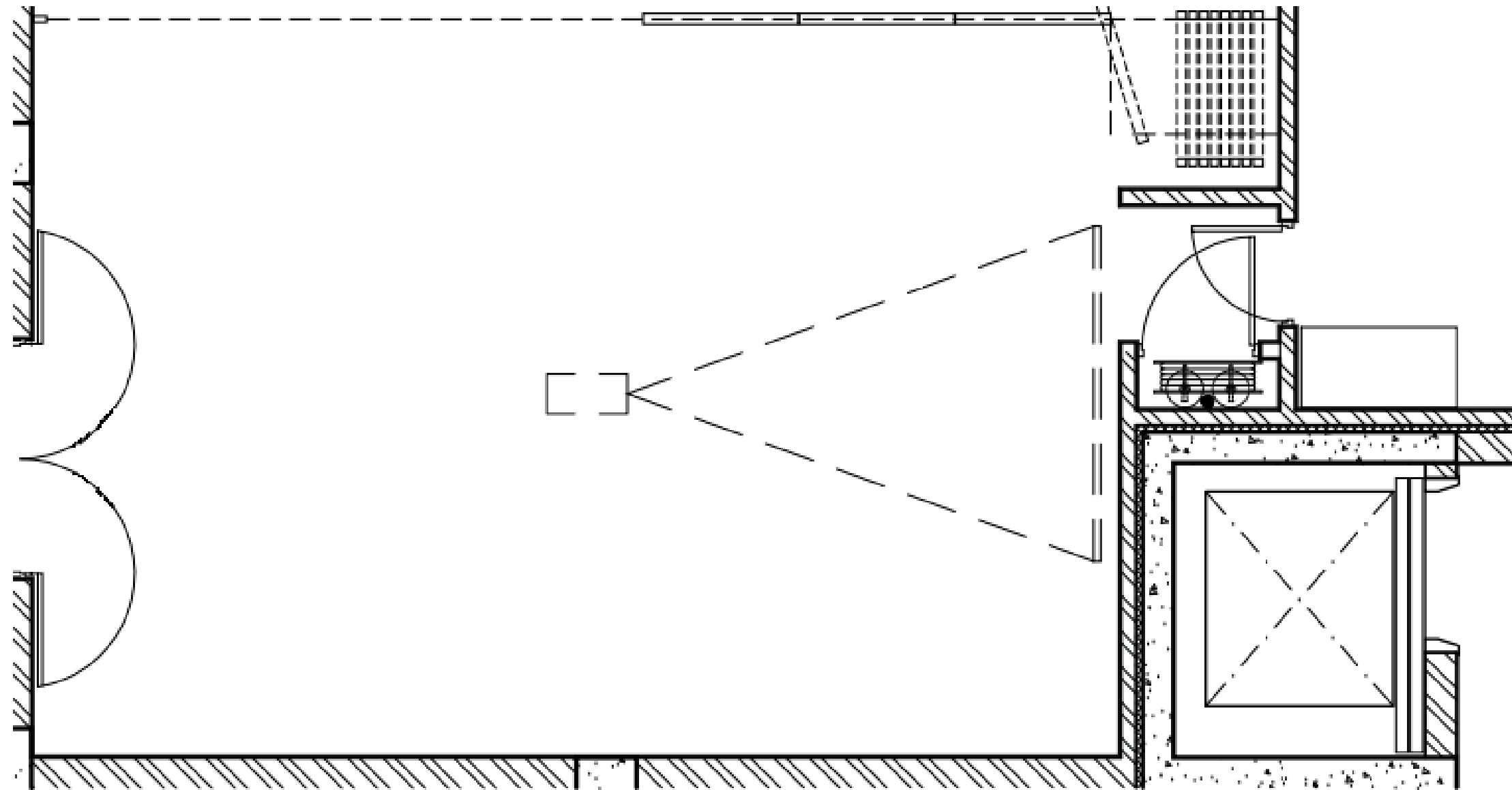
FACILITIES

- High-quality white tablecloths and napkins
- Wooden chairs with white cushioned seats
- Crockery and cutlery
- Bespoke menus for corporate, social or unique events
- Standard audio-visual technical
- Waitrons and bar staff

SEATING CAPACITIES

Banquet	Boardroom	Cabaret	Classroom	Reception	Theatre	U-Shape
30	15	15	12	25	20	15

FLOOR PLAN





THE COLONY ROOM

Set alongside our fine dining restaurant, The Grill Room, The Colony Room is ideal for intimate private dining experiences and focused corporate gatherings. Our experienced waiters and sommeliers will ensure an unforgettable evening of fine food and wine

ROOM DIMENSIONS

Floor / level	First Floor
Room length	5.4 meters
Room width	8.2 meters
Room height	3.4 meters
Square meters	67 sq m
Floor covering	Carpet
Screen size	2.490m x 1.450m
Screen quantity	1 x screens

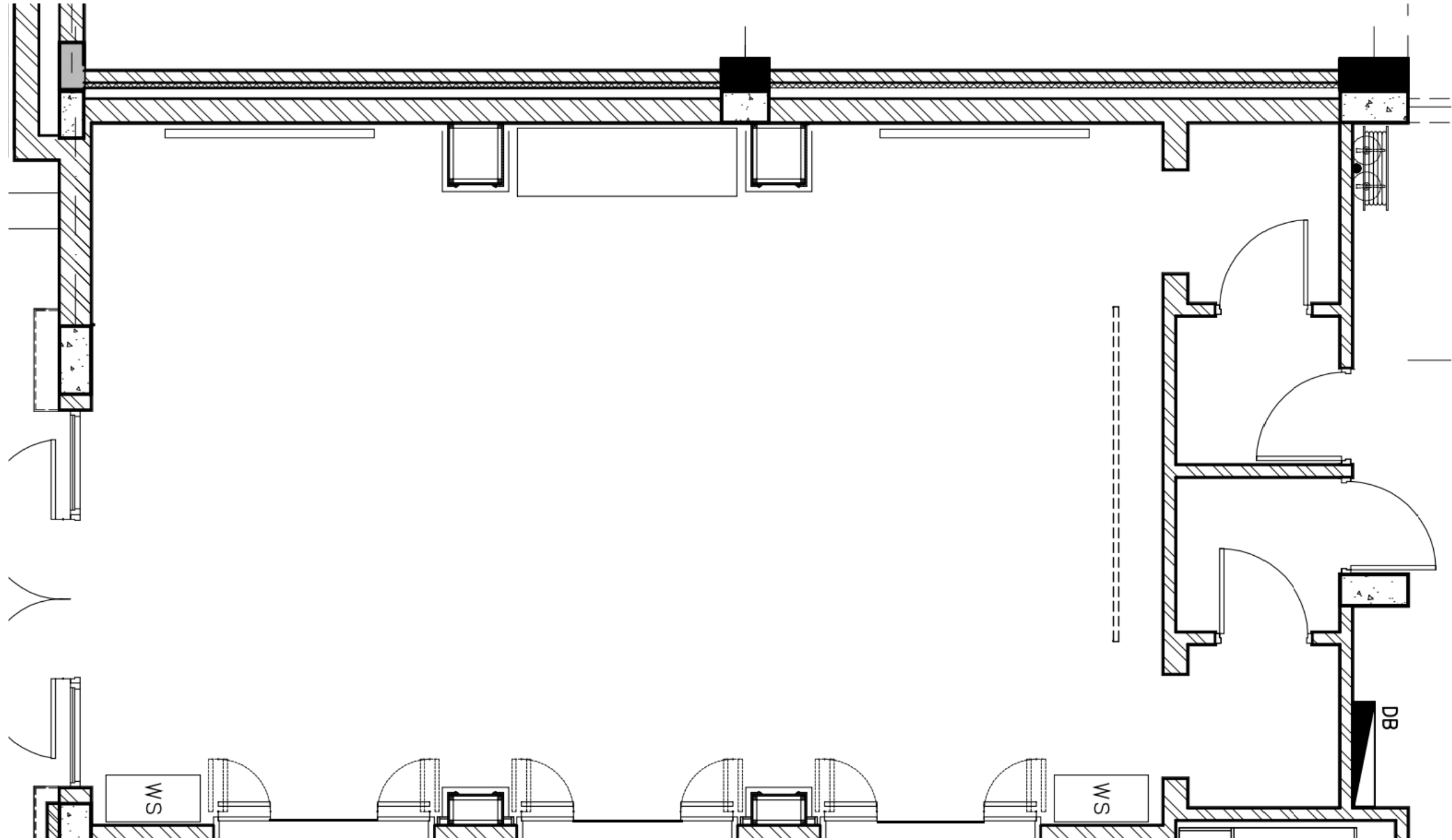
FACILITIES

- High-quality white tablecloths and napkins
- White leather tub chairs
- Crockery and cutlery
- Bespoke menus for corporate, social or unique events
- Data projector and screen
- Waitrons and bar staff

SEATING CAPACITIES

Banquet	Boardroom	Cabaret	Classroom	Reception	Theatre	U-Shape
-	15	15	15	30	20	15

FLOOR PLAN





THE WINE CELLAR

Set beneath a glass ceiling within The Oyster Bar, The Wine Cellar offers a unique private dining opportunity, hosting just a handful of guests for a memorable evening of fine food and exceptional wines individually selected by our sommelier.

A private dining experience in The Wine Cellar is a beautiful choice for intimate dinner parties, focused corporate functions and special events. A signature menu created by our Executive Chef will tantalise your tastebuds, while our qualified sommelier will present a selection of wines from our award-winning wine list.

ROOM DIMENSIONS

Floor / level	Below first floor
Room length	5.4 meters
Room width	3.4 meters
Room height	2.5 meters
Square meters	17 sq m
Floor covering	Screed
Screen size	N/A
Screen quantity	N/A

FACILITIES

- High-quality white napkins
- Wooden chairs and boardroom style table for 10 guests maximum
- Crockery and cutlery
- Bespoke menus for corporate, social or unique events
- Waitrons and bar staff



Table Variations & Sizes

Cocktail tables (round)	Diameter	81 cm
	Height	116 cm
Trestle tables (rectangle)	Width	70.5 cm
	Height	72 cm
	Length	211.5 cm
Banquet tables (round)	Diameter	180.5 cm
	Height	72 cm

Catering

Please refer to your quotation for applicable costs as well as our range of delectable menus. Kindly note that a 10% gratuity will be levied onto your total food cost and that our menus, as well as their prices are subject to change.

Dietary Requirements

Special meal requirements, i.e. Halaal, Vegetarian or Kosher, are to be indicated 5 (five) working days before your function. Unfortunately, we do not cater to Halaal or Kosher, as we do not have the facilities and are not certified. Our menus can be prepared Halaal friendly, which means that all pork and alcohol products will be eliminated from the menu. Alternatively, vegetarian options are available.

Strictly Halaal or Kosher meals can be purchased from the hotel's supplier at a surcharge. We can only outsource up to 10% of your final number of guests with these special meal requirements based on your confirmed menu selection as per hotel policy.



Audio Visual

- Standard Audio Visual Equipment (Available in selected venues)
- Screen
- Data Projector
- PA System (Suitable for Speeches and PC Sound only)
- Microphone
- DVD Player
- Whiteboard and markers
- Lectern

Specific requirements to be confirmed by the client in writing. All additional technical equipment can be hired at an additional charge.

Parking

Parking is strictly subject to availability. The hotel offers 150 parking bays subject to hotel occupancy and conferences booked. Overflow parking can be arranged at the Annex centre, which is within walking distance from the hotel, at no additional charge.

Set-Up Time

Please be advised that venue hire for set-up will be charged if the venue is required for additional décor or set up; this is subject to the availability of the venue. Alternatively, the venue will be accessible one hour before the start of the function.

Venue Hire

Venue hire costs may vary, depending on the venue, time, and function type, which will be confirmed in your customised contract. Overtime is charged at R 4 000 per hour or part thereof after the contracted event times.

(Breakfasts will be charged R 2 000 for overtime)

Please note this is subject to the availability of the venue.



Décor Accredited Suppliers

Company	Contact	Contact Number	Email Address
Eloquent -Concepts	Jen Munstermann	082 335 3345	jennifer@eloquent-concepts.com
Function Decor	Tami Lutchman	061 462 8540	info@functiondecor.co.za
Seating Plan	Cheryl Law	083 286 2810	info@seatingplan.co.za
Designer Flowers	Kobus Niemann	084 737 3432	desflowers@hotmail.com
Lifestyle Bazaar	Laura Kidd	083 777 6222	laura@lifestylebazaar.co.za
Functions for Africa	Paul Mann	082 804 8126	paul@functionforafrica.co.za
PMG Events	Melody Zalila	031 207 3026	info@pmgevents.co.za

Entertainment Accredited Suppliers

Company	Contact	Contact Number	Email Address
Sound Solutions	Daniel Israel	083 512 4692	daniel@sound-solution.co.za
Top Jocks (DJ)	Dave Ward	082 7777 389	ioffice@topjocks.co.za
Beat-Route	Daniel Sheldon	082 622 6902	daniel@beat-route.co.za
On Fire Entertainment	Jem Atkins	074 188 7090	jem@digiboyz.co.za

Technical Accredited Suppliers

Company	Contact	Contact Number	Email Address
Hirezone	Garth Lawler	031 579 3333	garth@hirezone.co.za

Team Building Accredited Suppliers

Company	Contact	Contact Number	Email Address
Beach & Bush Team Building	Sean Uys	T: 031 266 9221 C: 082 902 5672	info@beachandbush.co.za



RESTAURANTS AND BARS

The Oyster Box is famed for exquisite cuisine and attentive service. The dining venues each have a reputation for extraordinary culinary experiences, from the famous curry buffet to the signature dishes of Beatrice Tollman.

With world-class dining in The Grill Room and The Ocean Terrace, The Oyster Box is a gourmand's delight.

UNWIND IN STYLE

The Oyster Box is filled with spaces for relaxation. Three welcoming bars are destinations in themselves, providing unique atmospheres in which to unwind, from breathtaking views and the Umhlanga Schling at The Lighthouse Bar, to delicious sushi at The Oyster Bar, to the timeless elegance of The Chukka Bar.

THE GRILL ROOM - FINE DINING

Serves fresh seafood and classic contemporary cuisine. Children 12 and under are not permitted. Formal attire: collared shirt, long pants, closed shoes - no sportswear.

THE OCEAN TERRACE - AL FRESCO DINING

Featuring Tandoori and pizza ovens and our impressive curry buffet with a selection of at least 11 curries daily.

THE PALM COURT

For casual dining and our famous High Teas.



THE CHUKKA BAR

Serves cocktails, fine wines and whiskies. This is a smoking bar.

THE OYSTER BAR

Enjoy freshly harvested oysters from our own oyster beds and chilled Champagne, cocktails, as well as fresh sushi.

THE LIGHTHOUSE BAR

With breathtaking views of the ocean and live music. Children 12 and under are not permitted.

THE CHEF'S TABLE

Enjoy a glimpse of the inner-workings of a professional kitchen, with a front-row seat at The Chef's Table where our talented brigade of chefs create an extraordinary dining experience for small groups of passionate food-lovers.

Available for groups of between six and 10 guests (min 6 people) from Monday to Sunday for dinner only.





THE SPA

6 Treatment rooms for dual and single treatments

Hamam and sensation shower offering a traditional Oriental heat experience

Perfect finish tourmaline salon for manicures and pedicures

Tranquillity lounge, plunge pool and health bar

Products include B | Africa, Elemis, Mama Mio and Tata Harper



ACTIVITIES

Deep sea fishing and diving excursions on request

Variety of golf courses to choose from

Jogging and walking along the promenade

Direct access to swimming and body-boarding beach

Excursions to Big 5 game reserves and historic battlefields on request

Wine tastings

Helicopter tours on request



PLEASE CONTACT OUR DEDICATED GROUPS COORDINATOR TO ASSIST WITH ALL YOUR REQUIREMENTS FROM START TO FINISH.