



WALDORF ASTORIA®
SEYCHELLES • PLATTE ISLAND



ONE ISLAND ONE RESORT

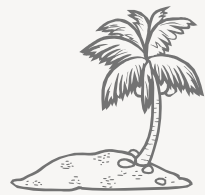
ABOUT PLATTE ISLAND



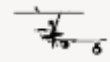


DISCOVER PLATTE ISLAND

A remote island long known as a sanctuary for Hawksbill turtles and seabirds turned into a rare conservation learning experience - preserving what we have for generations to come.



One Atoll
One Resort



Secluded and
Convenient to
Reach



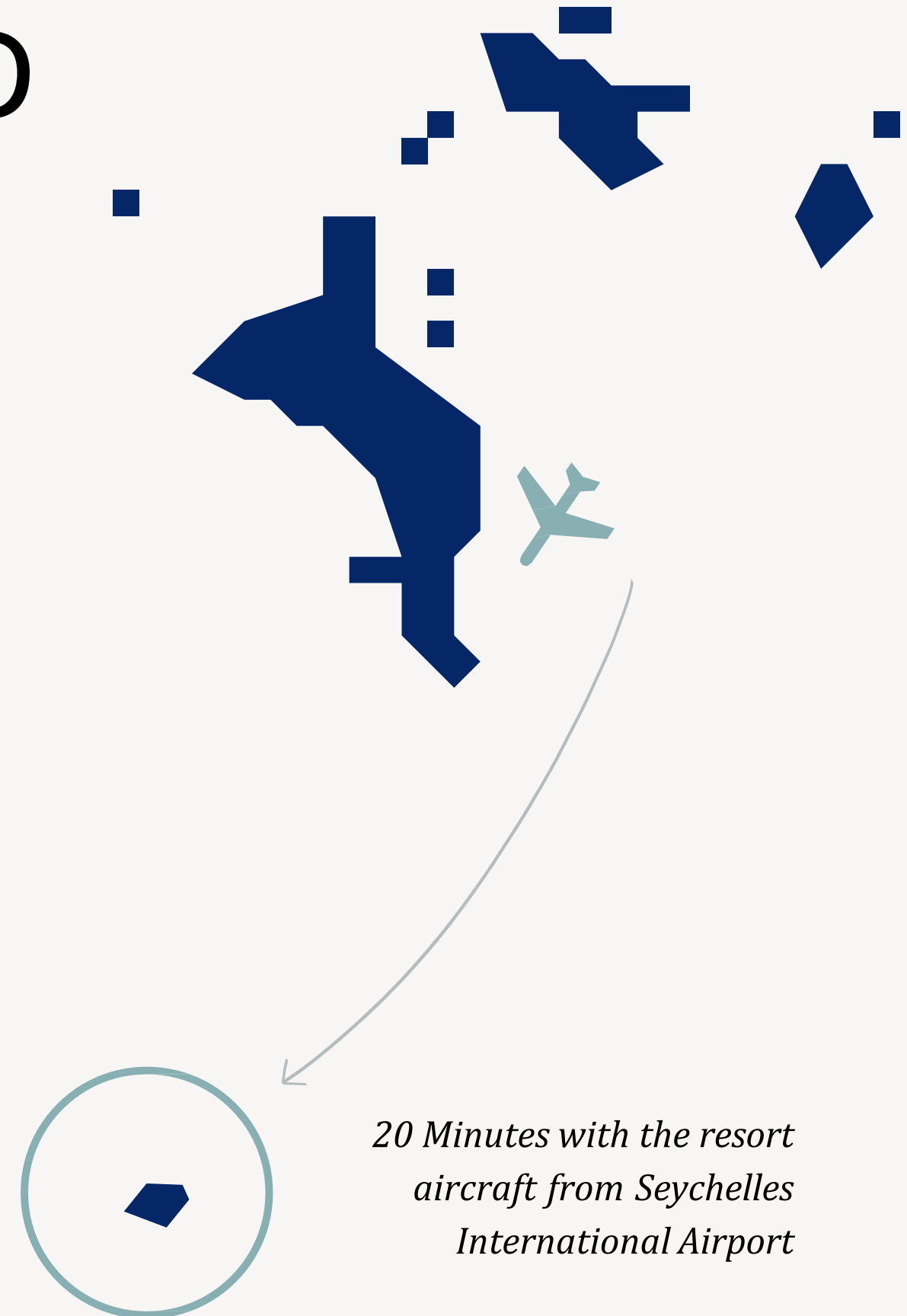
Rich Marine Life



World Class Fly
Fishing, Snorkelling &
Diving



A Pristine Natural Sanctuary for Turtles,
Sharks, Rays & Migratory Birds



*20 Minutes with the resort
aircraft from Seychelles
International Airport*

A tropical airport scene with a propeller plane on the left and palm trees on the right. The plane is white with red and blue stripes. The background shows a clear blue sky with scattered clouds and a lush green landscape with many palm trees.

ICONIC ARRIVES IN SEYCHELLES

ABOUT WALDORF ASTORIA SEYCHELLES PLATTE ISLAND





FLIGHT SCHEDULE

PLATTE ISLAND SCHEDULED FLIGHTS

All prices include **round-trip flights** to and from **Platte Island**, with a total luggage allowance of **28kg per paying passenger** (combining both hand and checked luggage). The flight from Mahé to Platte or vice versa takes **20-25 minutes** depending on weather conditions. Kindly note that all flights are chartered through IDC Aviation PVT LTD; as such seat availability and flight timing may change.

For the most current information, please reach out to our reservations team.

ROUND TRIP

Mahé - Platte - Mahé

PER PERSON
12 years and above

€700

PER CHILD
2 to 12 years

€350

INFANT
1-23 months (Shared Seat)

Complimentary

PRIVATE CHARTER | One way - To be booked a week in advance | €5000

FLIGHT TIMES

MAHÉ — ✈ — PLATTE

Saturday

Departure **14H00**

Arrival **14H20**

Rest of the Week

Departure **11H00**

Arrival **11H20**

PLATTE — ✈ — MAHÉ

Saturday

Departure **14H50**

Arrival **15H10**

Rest of the Week

Departure **11H50**

Arrival **12H10**





A REFINED HAVEN TO PLAY AND EXPLORE

Waldorf Astoria Seychelles Platte Island recalibrates the idea of private island luxury, where nature and architecture are sensitively blended.

Exceptional dining venues, a world-class lifestyle spa sanctuary, watersports and sincerely elegant service for all generations invite you to tropical paradise.



QUICK FACTS

Waldorf Astoria Seychelles Platte Island

- 50 Pool Villas
- Six Food and Drink Venues
- Sustainable luxury through solar energy and marine conservation
- Up to 5-bedroom villas for multigenerational experiences
- World Class Spa and Wellness Facilities
- Wide Range of Watersports and Activities
- Kids facilities
- Your Personal Concierge





LUXURY VILLAS WITH PRIVATE POOLS

ROOMS AND VILLAS

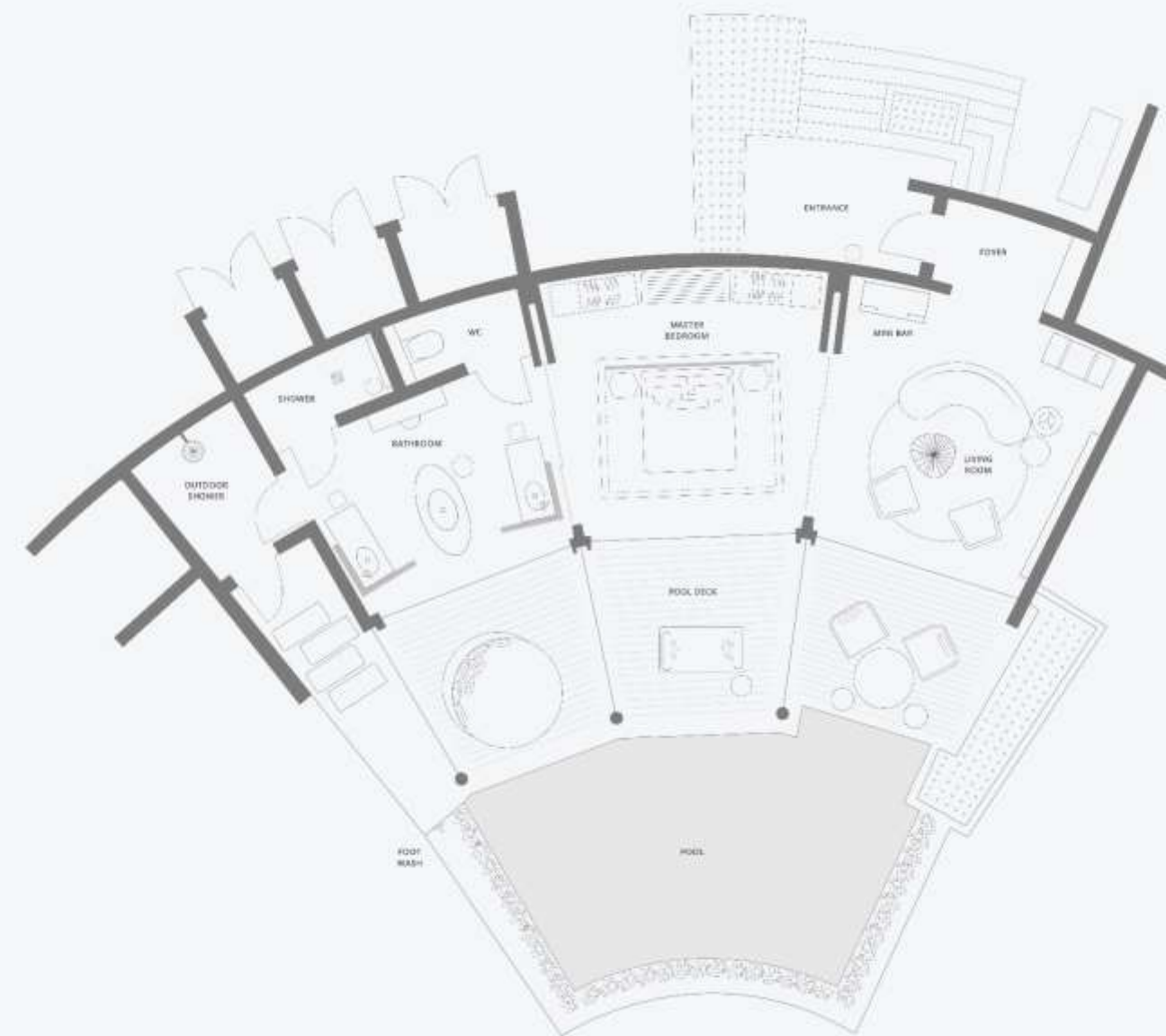


One Bedroom Hawksbill Pool Villa

141 sq. m, 1518 sq. ft, separate living room, terrace, private pool, free WiFi

Relax in this thoughtfully designed villa, which features a bedroom with one king-sized bed and an expansive separate living room. Enjoy outdoor living, as the villa opens onto a spacious deck with its own private pool and outdoor dining space. Revel in direct beachfront access and invigorate your senses with an outdoor shower.

Other amenities include an espresso machine, free WiFi, a minibar, bathrobe, and slippers. Sleeps 2.

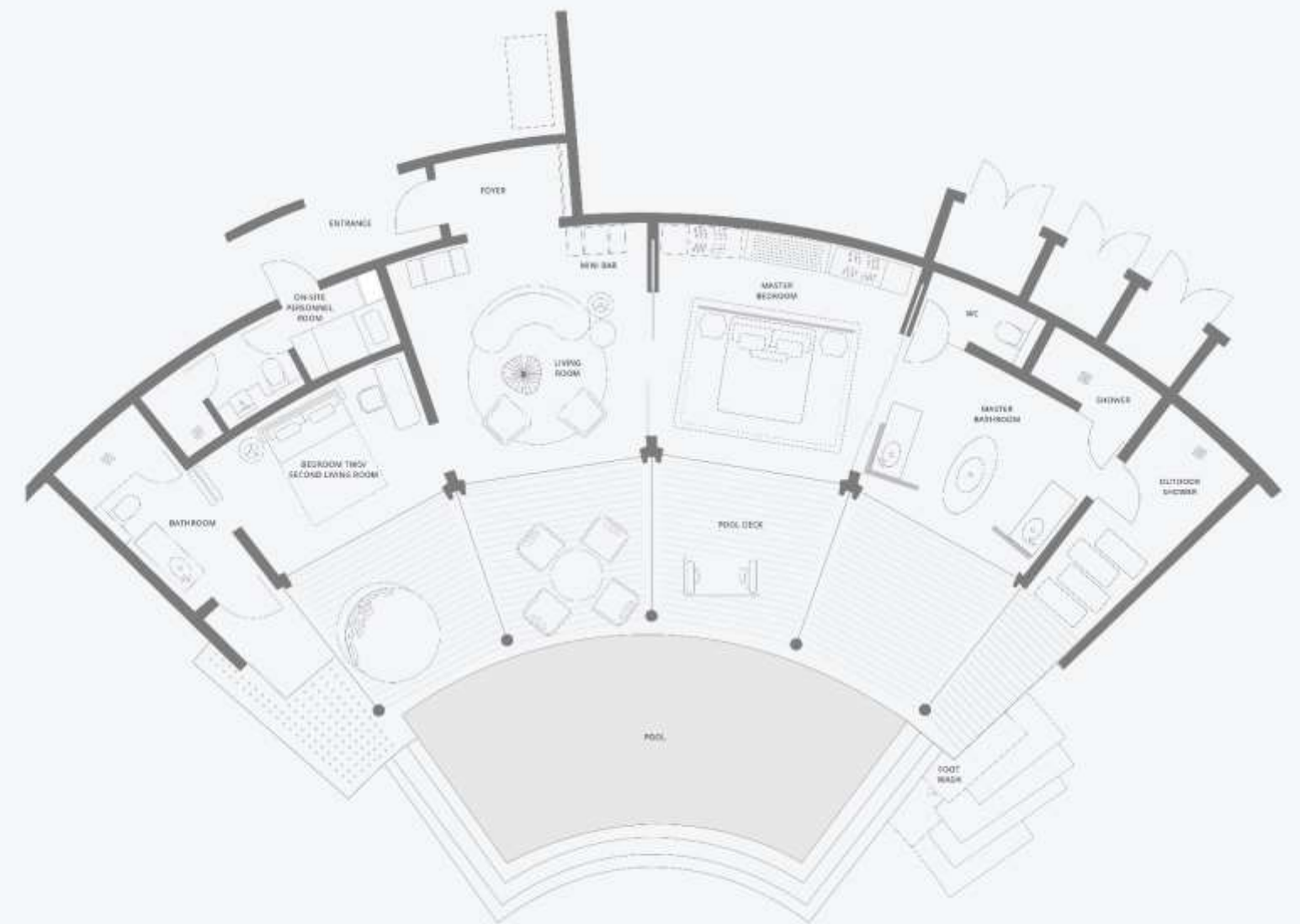


One Bedroom Grand Hawksbill Pool Villa

194 sq. m., 2088 sq. ft., separate living room, private pool, terrace, free WiFi

Relax in this sophisticated villa which features a bedroom with one king-sized bed. An expansive outdoor oasis awaits, complete with a private pool, an al fresco dining enclave, and a luxurious outdoor shower.

This villa offers the additional space of a study room that can be converted into an additional bedroom or an extension of the living room. Other amenities include an espresso machine, free WiFi, a minibar, a bathrobe, and slippers. Sleeps 2 adults and 2 children on a pullout sofa.

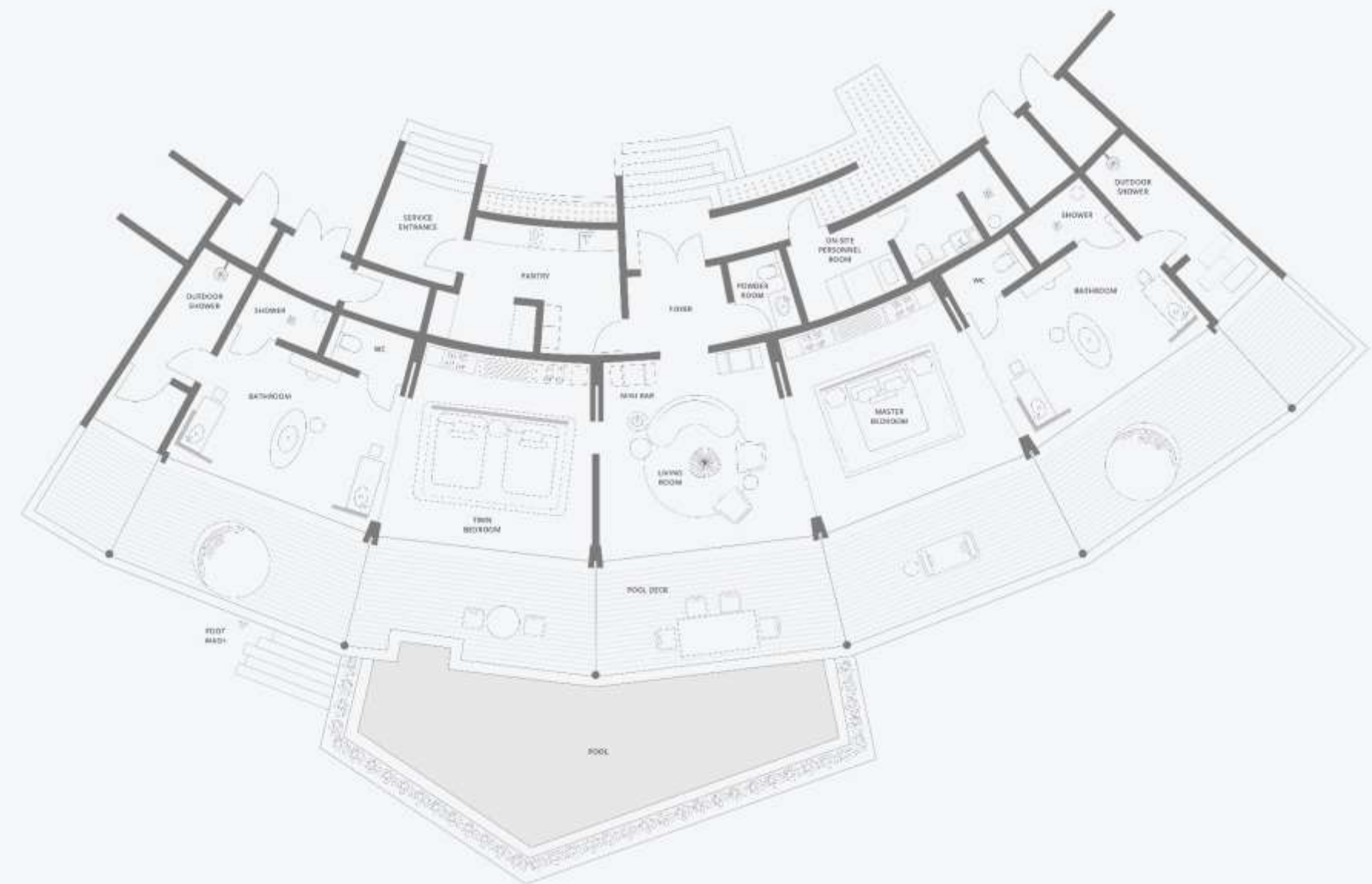


Two Bedroom Blacktip Pool Villa

393 sq. m., 230 sq. ft., two bedrooms, separate living room, terrace, private pool, free WiFi

Enjoy the charm of this spacious villa, which features two bedrooms, one with a king-sized bed and the other with two double beds. This villa benefits from a spacious outdoor terrace with its own private pool and outdoor dining space. Enjoy direct access to the beach and outdoor shower to help you cool off. The indoor space features a separate living room.

Other amenities include an espresso machine, free WiFi, a minibar, bathrobe, and slippers. Sleeps 4.

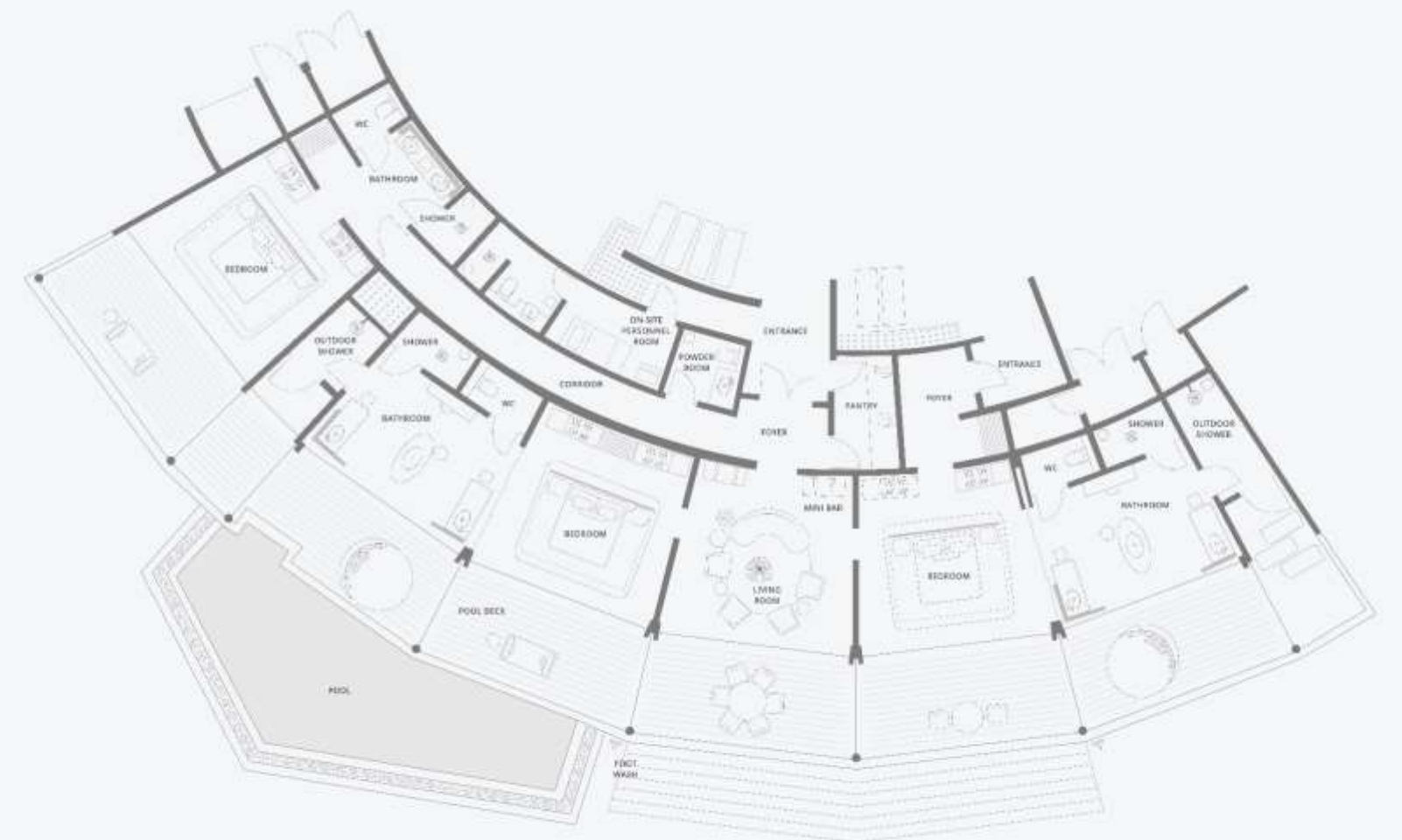


Three Bedroom Kingfish Pool Villa

472 sq. m., 5080 sq. ft, three bedrooms, terrace, private pool

This spacious villa offers flexible options for a family stay. Connect to a King Deluxe Room to give you three bedrooms, each with its own tv and bathroom. Enjoy a spacious outdoor terrace with its own private pool and outdoor dining space. The indoor space benefits from a separate living room with its own TV and a powder room for guests.

Other amenities include an espresso machine, free WiFi, a minibar, bathrobe, and slippers in each bedroom. Sleeps 6 with King Deluxe Room connected.



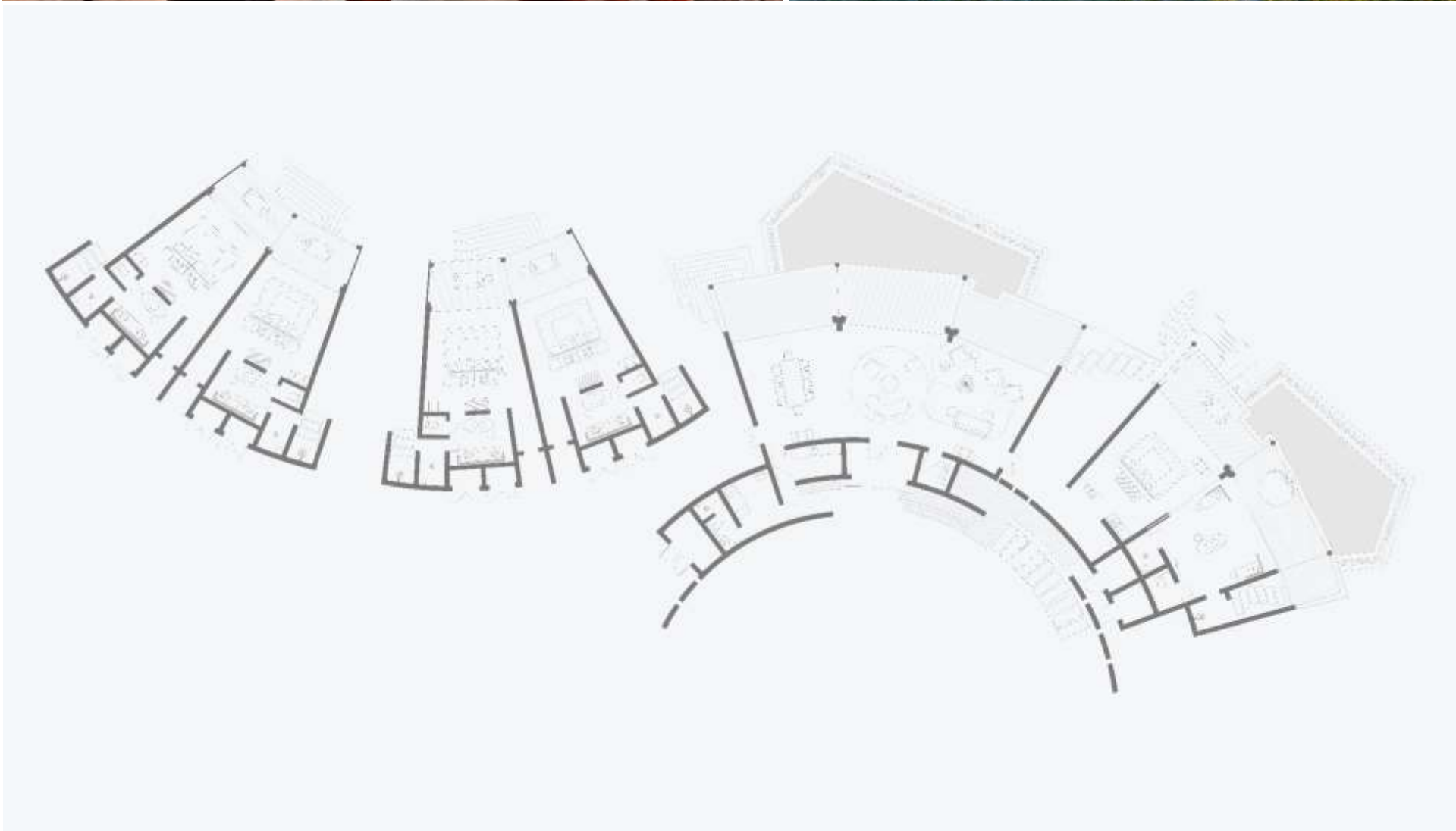
Five Bedroom Eagle Ray Pool Villa

751 sq. m., 8084 sq. ft, five bedrooms, terrace, private pool

Enjoy the flexibility of this elegant suite, which is ideally situated in a secluded enclave. With 5 separate bedrooms, each with one king-sized bed and en-suite bathroom, it offers space as well as the utmost privacy for the entire family.

Relax in the separate living room, complete with its own state-of-the-art entertainment system and a powder room for guests. Take advantage of the spacious outdoor terrace with its own private pool and outdoor dining space.

Other amenities include an espresso machine, free WiFi, a minibar, bathrobe, and slippers in each bedroom. Sleeps ten.



DESTINATION DINING

The restaurants, bars and lounges in Waldorf Astoria Seychelles Platte Island are atmospheric showcases of culinary excellence and unparalleled service, and a key part of the singular experience of luxury that Waldorf Astoria promises.



CULINARY EXPERIENCES

Waldorf Astoria Seychelles Platte Island



**GARDEN
TO TABLE**



**OCEAN
TO TABLE**
Freshly Caught
Seafood



**COOK
WITH
NATURE**



**CATCH
YOUR
DINNER**

Moulin

Embodying a 'soil to soul' concept, Moulin invites you on a holistic journey of conscious eating. It operates as a cookery school during the day, transforming into a unique restaurant at nightfall. With a primary focus on organic, sustainable, and predominantly plant-based dishes, Moulin reflects a thoughtful approach to food, right from the ground up. Taking its cue from the Omakase tradition of Japan, Moulin allows the chef to take charge of the dining experience, crafting a unique and personalized menu for every season using the freshest produce from the island's garden. Each dish is then paired with thoughtfully chosen beverages, which range from curated spirits to non-alcoholic herbal infusions, designed to complement and enhance the flavors of each course.



Maison des Epices

Our distinctive dinner-only destination showcases a unique Creole Latino culinary blend. Prominently featuring live cooking stations where global meats — including our own aged variety — sizzle over open fires, and locally sourced produce is transformed into memorable dishes. Emphasizing a family-style service, Maison de Epices offers an immersive atmosphere where tradition meets innovation.



La Perle

Our high-end Mediterranean brasserie presents a unique gastronomic journey from Spain to Turkey. Operating for breakfast, lunch and dinner, the focus is on a variety of dishes made from locally sourced, fresh seafood. Its lively open kitchen and live cooking stations turn every meal into an engaging culinary spectacle. With a rich collection of French and Italian wines, La Perle ensures each dish is perfectly complemented, enhancing the dining experience.



Peacock Terrace

Defined as an intimate sanctuary, Peacock Terrace is the haven for artisanal pastries and Seychelles-roasted coffee. An intimate venue that welcomes guests during the day, it masterfully blends the intricate artistry of coffee brewing and pastry-making with the distinguished hospitality for which the venue is celebrated. Enhanced by a creative beverage menu that includes a diverse range of teas, herbal infusions, and innovative drinks, Peacock Terrace stands as an exceptional setting for culinary exploration and warm guest interactions.



Lalin

Our evening star sets the stage for elegant pre-dinner indulgence and refined nocturnal sips. Open until the final guest's departure, this vibrant venue showcases an exclusive array of inventive cocktails and a curated selection of sparkling wines, including champagne, cava, and prosecco. Crafted with the artistic flair of our head mixologist, each concoction promises an enchanting beginning or closure to your evening.



Torti

Torti, the vibrant pool and beach bar at the heart of the resort, is distinguished by its unique offerings and engaging atmosphere. Known for customizable Bento box offerings and fresh sushi, this outlet complements inventive beverages with a curated selection of new world wines and gins. Creating a personalized blend of dining experiences, Torti draws guests into a lively, music-filled soundscape that perfectly harmonizes with the relaxing cabanas and sunbeds arranged in the water. With this seamless fusion of delectable flavors and immersive ambiance, Torti becomes more than a beach bar – it's a retreat, a sensory delight, and a unique culinary journey.

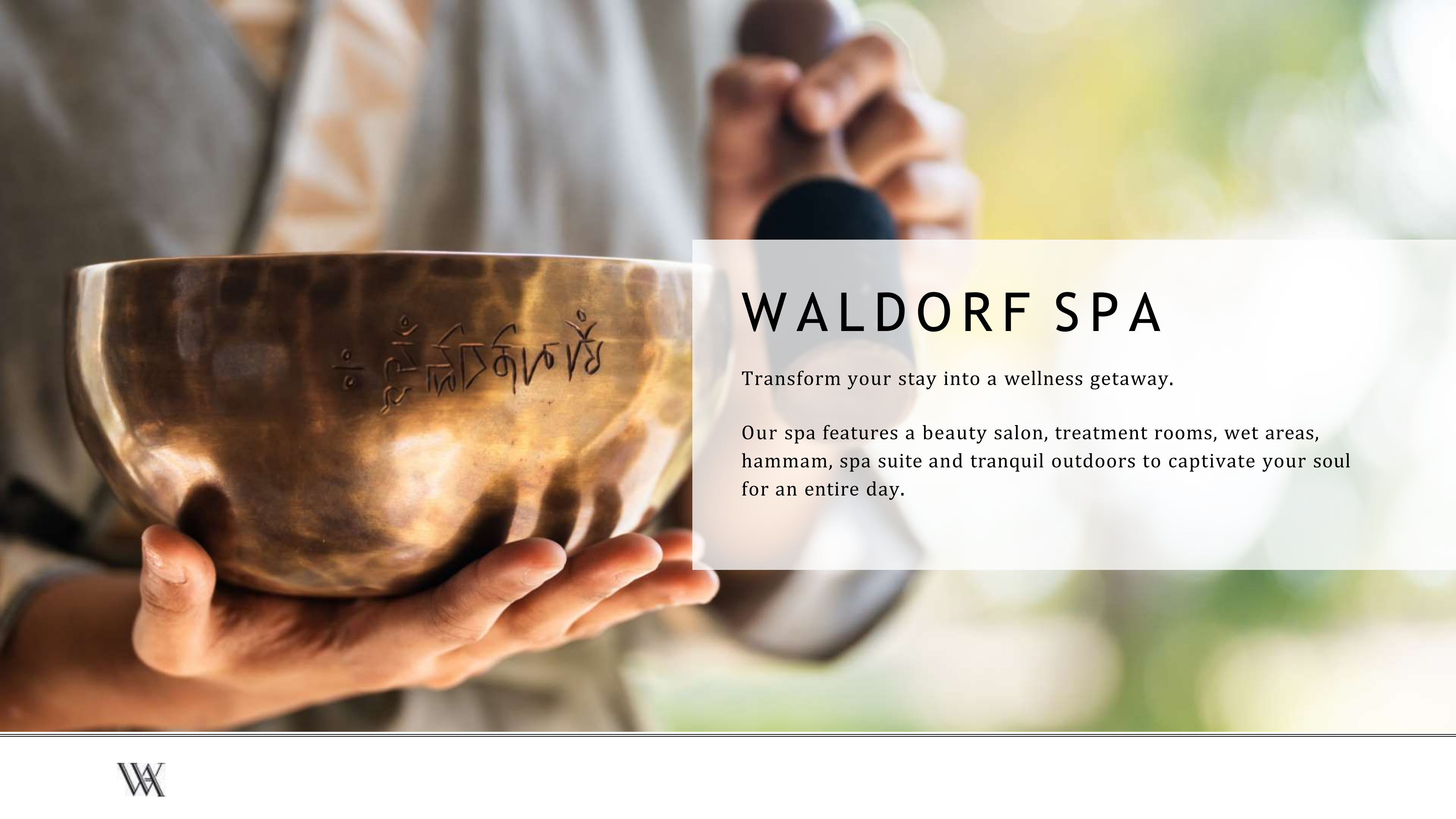




DISCOVER NEW
WAYS TO INDULGE
YOUR SENSES

WALDORF SPA





WALDORF SPA

Transform your stay into a wellness getaway.

Our spa features a beauty salon, treatment rooms, wet areas, hammam, spa suite and tranquil outdoors to captivate your soul for an entire day.





BEING WELL

Being Well offers **extraordinary spa treatments** seamlessly woven with innovative wellness practices, all **designed to elevate and optimize** overall wellbeing.



RELAX MASSAGE

60 / 90 min | 210 / 280 EURO ++

A fully personalized treatment based on **specific needs and desired results**. Combining flowing, soothing, and rhythmical movements using light to medium pressure. Designed to **gently relieve muscle tension** as well as to bring balance and a state of well-being.

DEEP TISSUE MASSAGE

60 / 90 min | 230 / 295 EURO ++

This massage is designed to target the **deeper layer of muscles**, it helps release stress, tension, boost circulation and **improve mobility and muscle tone**. Targeting the concerned areas it has a therapeutically effect.

BALINESE MASSAGE

60 / 90 min | 210 / 280 EURO ++

This **energy giving massage** is soothing using flowing, gliding strokes from moderate to firm pressure to stimulate circulation. The perfect blend of **muscle release and relaxation**.

MOVE WELL MASSAGE

90 min | 295 EURO ++

Move-well is a **muscular tension therapy**, using a combination of acupressure, soft tissue manipulation and tissue compression as well as gentle stretching to **enhance range of motion**. With stress and tension being eased, experience increased flexibility.

BODY SCRUB

60 min | 220 EURO ++

Stimulating and **detoxifying botanicals** to clarify and smooth the skin with an expert polish followed by a refreshing, detoxifying and toning balm to **enhance skin tone and vitality**.

BODY WRAP

60 min | 220 EURO ++

Designed to **promote healthy skin and tissue function** this gratifying and pampering experience employs soothing, softening and nourishing botanicals to envelop the body in **pure natural luxury**.



MINDFUL DREAMS MARINE MASSAGE

90 / 120 min | 300/350 EURO ++

A complete **top-to-toe relaxation** journey, combining sleep inducing cultural massage and meditation techniques, this **wellbeing-focused treatment** induces instant tranquility and fosters inner calmness and serenity. *By VOYA*

MARINE|BODY SCRUB

60 min | 240 EURO ++

A wonderful choice of scrubs tailored to specific needs at the moment of treatment. The result is **calmed, nourished, and hydrated skin**. *By VOYA*

*/ Time to Shine
/ Lavender and Seaweed Sugar Glow
/ Peppermint and Seaweed Sugar Glow*

OCEAN ESSENCE BODY WRAP

90 min | 280 EURO ++

A powerful blend of seaweed and minerals works together in this immersive body wrap. **Stimulate, detoxify, and hydrate the skin**, by combating cellulite and fatigue, producing a brighter, smoother, and refined skin. *By VOYA*

AFTER SUN SEAWEED LEAF WRAP

90 min | 280 EURO ++

This soothing and **restoring treatment** replenishes the skin **after sun exposure** leaving it calm and rehydrated. Beginning with a bladder-wrack body buff, this treatment **removes dry and dull skin**. The whole body is then covered in warm Laminaria Seaweed leaves, you are cocooned whilst a deep pressure scalp massage finishing your ritual and leaving your skin **smooth and glowing**. *By VOYA*





Complements



HYDRATING HANDS

30 min | 110 EURO++

First enjoy an exfoliation, a **deeply relaxing massage** of the hand and arm after which hands are wrapped in warmed Atlantic seaweed leaves to **hydrate and nourish** dry hands. *By VOYA*

BRIGHT EYES

15 min | 65 EURO++

This is a firming, **hydrating and results-orientated treatment** that uses specific products rich in seaweed extract, to help **reduce the appearance of fine lines** and decongest the eye area. *By VOYA*

MINI BODY SCRUB

30 min | 125 EURO++

For a brighter and younger skin, a quick body scrub will help nourish and **stimulate blood flow**.

EYE MARINE TREATMENT

45 min | 165 EURO++

Combining both **relaxing and decongesting lymphatic massage** movements to banish puffiness and dark shadows. This is a firming, hydrating and **results-orientated treatment** that uses specific products to help reduce the appearance of fine lines and decongest the eye area. *By VOYA*

COMPLEMENTS

Complement your treatments with these **enhancements** that are aimed to **elevate the treatment experience** whilst promoting wellbeing. These treatments are intended to complement existing services and **cannot be reserved independently**.

HEAD MASSAGE

30 / 45 min | 110 / 160 EURO++

A **deep relaxing** Indian head, neck and shoulder massage to ease muscle aches as well as to **relieve tension** to relax and calm the mind.

FOOT MASSAGE

30 / 45 min | 110 / 160 EURO++

Enjoy the revitalizing foot massage that **focuses on aiding circulation** and reviving tired muscles.

MINI BODY MASK

30 min | 125 EURO++

A moisturising treatment aids in **maintaining the glow** and hydration of skin

BACK MASSAGE

30 / 45 min | 110 / 160 EURO++

An energizing power back, neck and shoulder massage employing the dry techniques to **stimulate blood flow**. This is then followed by oil massage to **relieve aches and pain**, whilst promoting muscle flexibility and toning.





A young sea turtle is crawling on a sandy beach. The turtle is dark-colored with a lighter underbelly. In the background, there are waves breaking on the shore under a blue sky with some clouds. The scene is captured in a wide-angle shot, emphasizing the vastness of the beach and ocean.

EXPERIENCE IT YOUR WAY

ACTIVITIES ON PLATTE ISLAND



BLUE SAFARI

Blue Safari organises marine safaris and ocean experiences in one of the most biologically diverse ecosystems in the world - the Outer Islands of the Seychelles.

Experiences offered with Blue Safari Seychelles

- Scuba Diving
- Fly Fishing
- Snorkeling
- Blue Safari
- Ocean Experiences
- Reef Flats Expedition

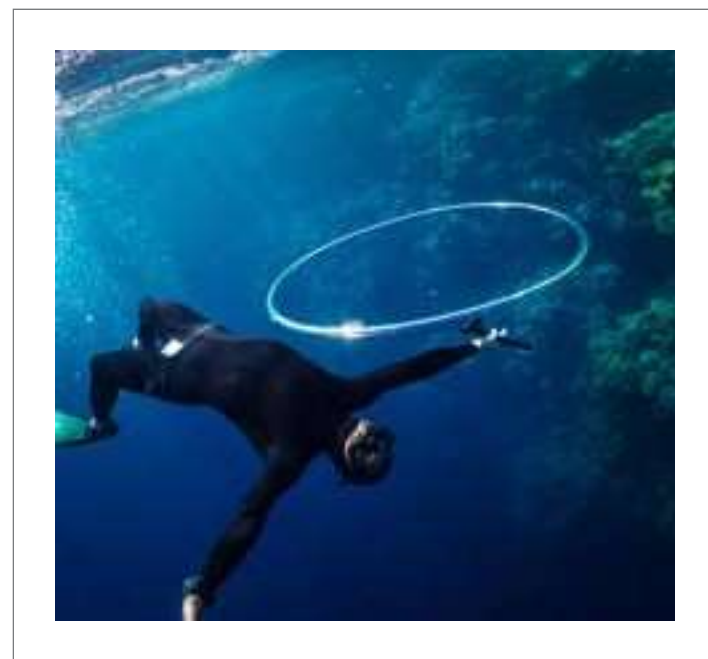


DIVING

With native Hawksbill turtles, eagle rays, manta rays and whale sharks, experience the magnificent underwater wildlife and some untouched scenery in the crystal waters.



SCUBA DIVING

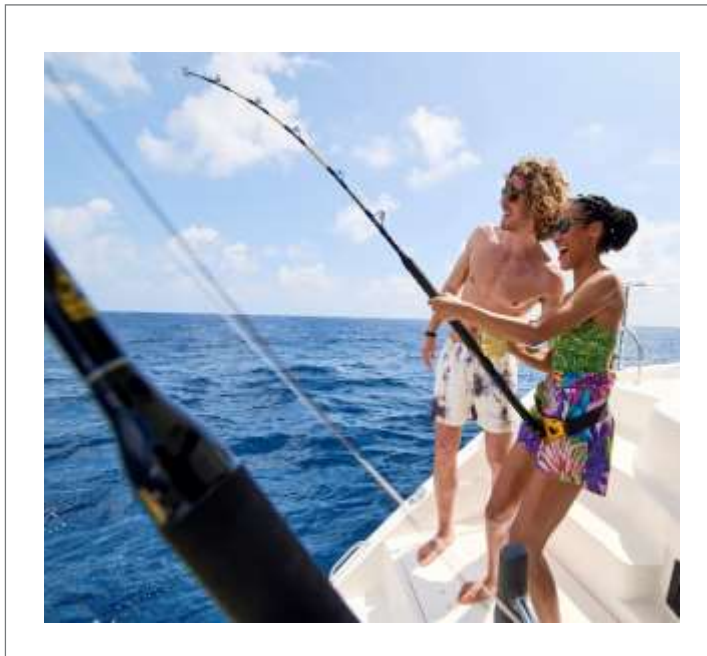


FREEDIVING

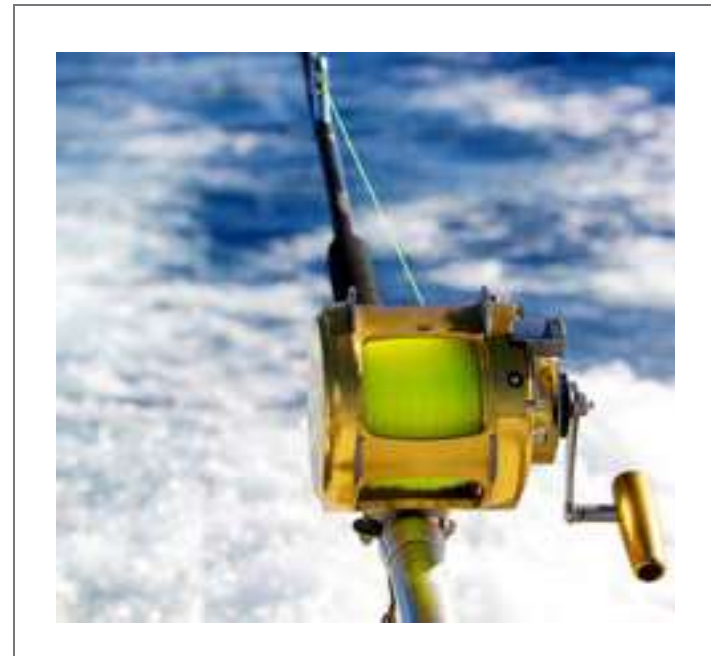


SNORKELING

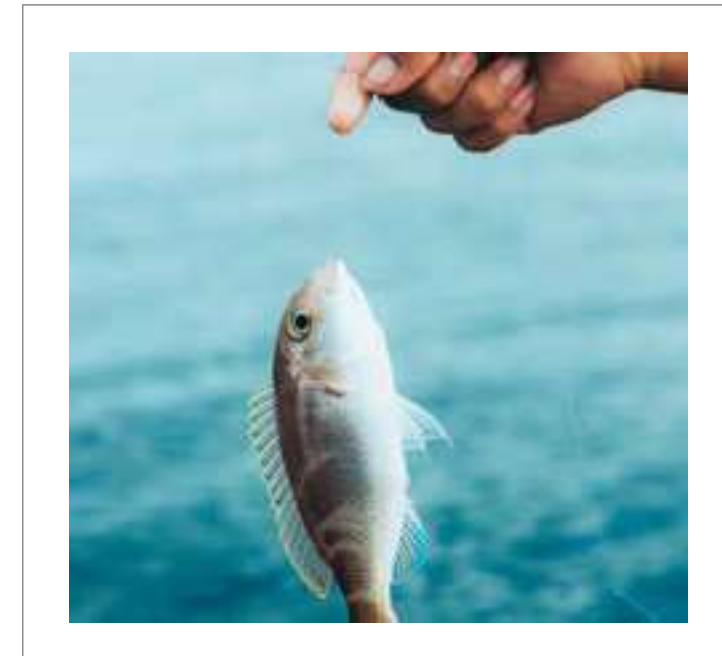
FISHING



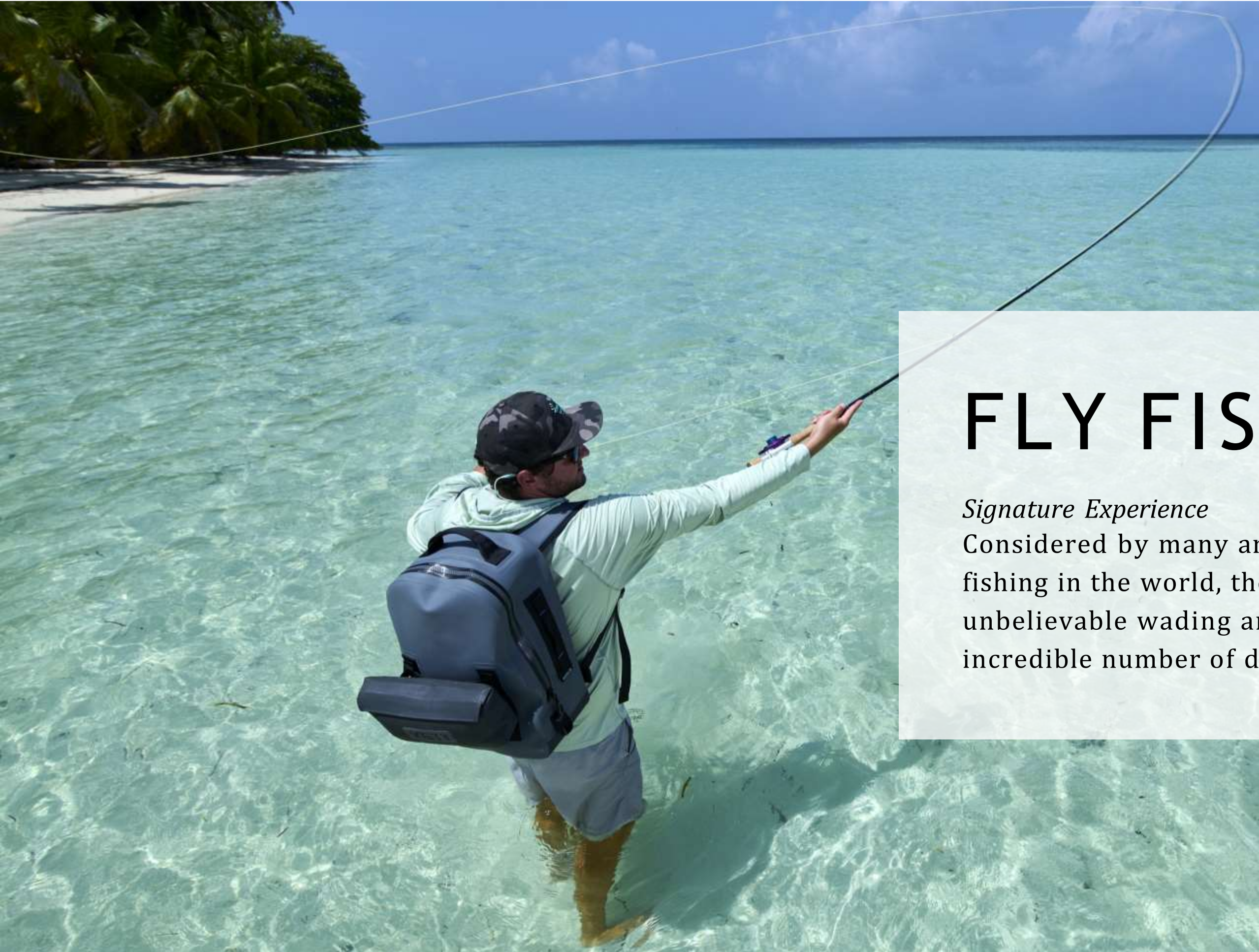
OFF-SHORE FISHING



COASTAL TROLLING



CREOLE FISHING



FLY FISHING

Signature Experience

Considered by many anglers to be the finest saltwater flats fly fishing in the world, the shallow waters of Platte Island offer unbelievable wading and amazing fly fishing opportunities for an incredible number of different species.



KITE SURFING ON PLATTE



PADDLE
AND
TENNIS
WITH A
PRO



CONSERVATION



We recognize our role in preserving Platte Island's pristine environment. We actively collaborate with local non-profit conservation organizations such as the Marine Conservation Society Seychelles (MCSS) and the Island Conservation Society (ICS) to fulfil this responsibility. Additionally, we have a resident marine biologist to manage ongoing conservation projects.

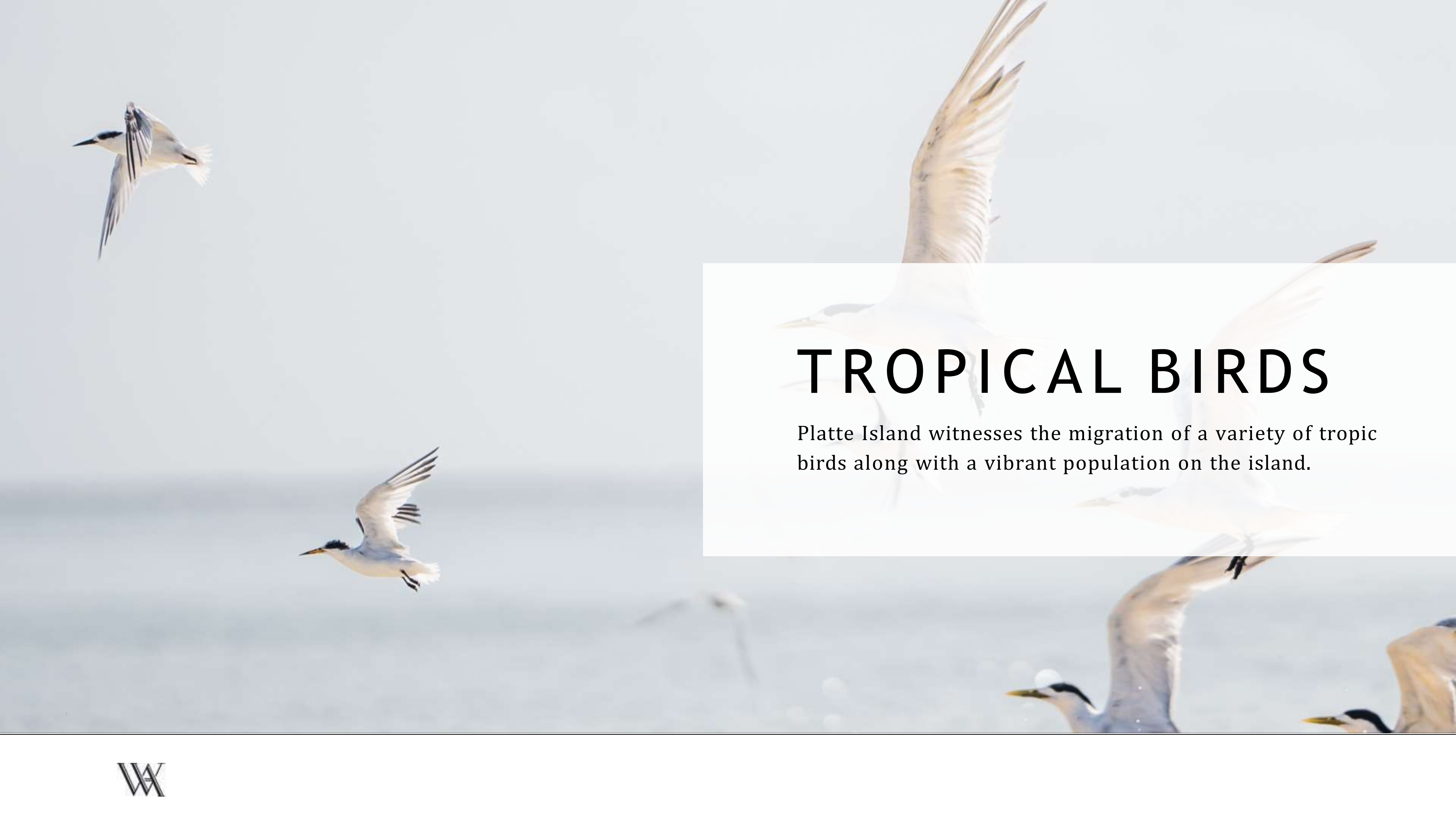
Our sustainability efforts include utilising solar energy, maintaining a vegetable garden to supplement our food, and minimizing our overall impact on the island's ecosystem. This commitment to conservation allows us to offer guests a luxurious experience while protecting Platte Island's natural beauty for future generations.





TURTLE HATCHING

Platte Island is a natural breeding ground for Hawksbill turtles during the nesting season between November and March.



TROPICAL BIRDS

Platte Island witnesses the migration of a variety of tropic birds along with a vibrant population on the island.

A school of small, silvery fish swimming in clear blue water. The fish are arranged in a loose, circular pattern, moving towards the right side of the frame. The water is a light, clear blue, and the fish are small and sleek, typical of a nursery school.

SHARK NURSERY

Waters surrounding Platte Island is home to a wide variety of sharks - including lemon sharks, blacktip sharks, reef and nurse sharks.



FAMILY TIME

ACTIVITIES ON PLATTE ISLAND



EXPERIENCES THAT LAST

Join our conservation teams to learn more about our conservation efforts. Sea Scouts are available for kids 04 to 12 years old.



MONDAY

- 10H00 Mini Yoga
- 11H00 Get Crafty
- 12H00 Lunch Break
- 13H00 Group Snorkeling Lesson
- 15H00 Painting Session
- 16H00 Beach Badminton

TUESDAY

- 10H00 Aqua Fun Fit
- 11H00 Fanciful Faces
- 12H00 Lunch Break
- 13H00 Platte Blue Wave Hunt
- 16H00 Pizza Picassos
- 17H00 Tennis Clinic

WEDNESDAY

- 10H00 Stretching Time
- 11H00 Board Games
- 12H00 Lunch Break
- 13H00 Lagoon Snorkeling**
- 15H00 Palm Leaves Weaving
- 16H00 Learn Seychelles Culture
- 19H00 Movie Under the Stars

THURSDAY

- 10H00 Mini Boot Camp
- 11H00 Snakes and Ladders
- 12H00 Lunch Break
- 13H00 Group Snorkeling Lesson
- 15H00 Fortune & Glory Hunt
- 16H00 Cookie Crafters

FRIDAY

- 10H00 Mini Yoga
- 11H00 Fanciful Faces
- 12H00 Lunch Break
- 13H00 Water Polo
- 15H00 Capture the Flag
- 16H00 Beach Walk
- 19H00 Star Gazing

SATURDAY

- 10H00 Fun Cross Fit
- 11H00 Science Master
- 12H00 Lunch Break
- 13H00 Lagoon Snorkeling
- 14H00 Discovery Lab
- 15H00 Free Play
- 16H00 Fizz & Breeze Mocktails

SUNDAY

- 10H00 Breathing In & Out
- 11H00 Paper Mache Pinata
- 12H00 Lunch Break
- 13H00 Water Basketball
- 15H00 Freeze Steps
- 16H00 Nature Walk

WEEKLY EVENTS

- WEDNESDAY
- 19H00 - 21H00 Star Gazing
- FRIDAY
- 19H00 - 20H30 Movie Under The Stars



A tropical beach scene with people in swimwear and a picnic setup on the sand. In the foreground, a woman in a white lace bikini and a large white sun hat stands smiling. Behind her, a man in a pink shirt and floral shorts holds a drink. Further back, another man in a red shirt and a woman in a pink jumpsuit are visible. The background shows a clear blue sky and turquoise water. In the foreground, a picnic table with a blue cloth holds a tray of food and a drink. There are also woven baskets, a wicker lantern, and a potted plant on the sand.

CELEBRATIONS

Waldorf Astoria Seychelles Platte Island provides a backdrop of breathtaking natural beauty for your life event. Imagine exchanging vows on a secluded beach with the turquoise Indian Ocean as your witness. Host an unforgettable anniversary dinner under a canopy of stars.



THANK
YOU



WALDORF ASTORIA®
SEYCHELLES • PLATTE ISLAND