

HOTEL ROOMS AND SUITES

Mont Rochelle has 26 stunning rooms, including six suites all arranged around the main building, and Manor House a private four-bedroom villa. The hotel and vineyard are just under an hour's drive from Cape Town in the town of Franschhoek in South Africa. Franschhoek is a traditional vineyard town and is considered to be the food and wine capital of South Africa.

Escape to this picturesque corner of South Africa at the foot of the Klein Dassenberg mountain range for relaxation and a superb culinary experience accompanied by some outstanding wines.

SHIRAZ ROOMS (x4) 30-31 SQM

There are four Shiraz rooms with king-size beds and all feature courtyard or valley views. They are located in both the Garden and Manor Wing.



MERLOT ROOMS (x6) 33-39 SQM

Our six Merlot rooms are larger than our Shiraz rooms and also boast king-size beds with valley views. They are located in both the Garden and Manor Wing.



CABERNET ROOMS (x6) 40 SQM

The six Cabernet rooms are located in the Vineyard Wing and all include a private terrace overlooking the valley.

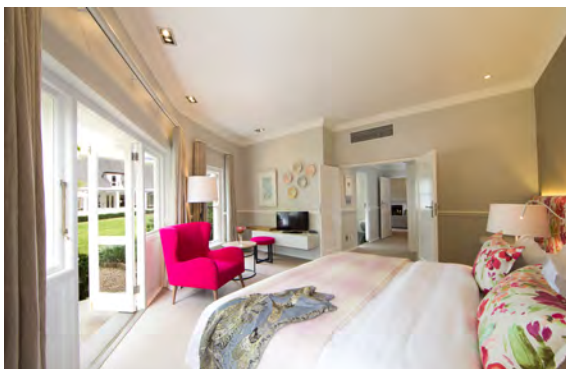


NB: All rooms can be made up with twin beds on request.

HOTEL ROOMS AND SUITES

PINOTAGE SUITES (x4) 62-83 SQM

There are four spacious Pinotage Suites located in both the Manor Wing and Garden Wing, each of which features a separate lounge and fantastic views.



CAP CLASSIQUE SUITES (x2) 80-103 SQM

Guests staying in our two largest rooms, our Cap Classique Suites, will enjoy a separate lounge area, private terrace and plunge pool. Both suites are in the Vineyard Wing.



NB: Suites can be made up with an additional two freestanding beds for children.

WHAT CAN YOU EXPECT TO FIND IN YOUR BEDROOM?

- Africology branded bathroom amenities, a hairdryer, bathrobe and slippers
- We don't believe in sneaky minibar charges so everything you find in your in room minibar is complimentary!
- A flat screen TV with a selection of channels and a Bose sound system for streaming your music
- Tea and coffee facilities, a Nespresso machine
- A notepad and pen, postcards with stamps, laundry bag, safety deposit box
- International adapters/USB points
- Hair straighteners are available at Reception on request
- A great view!

ROOM TYPES	SIZE RANGE IN SQ METRES	SIZE RANGE IN SQ FEET
Shiraz Rooms	30-31 m ²	323-334 ft ²
Merlot Rooms	33-39 m ²	355-420ft ²
Cabernet Rooms	40 m ²	430 ft ²
Pinotage Suites	62-83 m ²	667-893 ft ²
Cap Classique Suites	80-103 m ²	861-1,108 ft ²

THE VINEYARD WING

ROOM TYPE AND NUMBER	SIZE OF ROOM IN SQ METRES	SIZE OF ROOM IN SQ FEET
Cabernet Room 21	40 m ²	430 ft ²
Cabernet Room 22	40 m ²	430 ft ²
Cabernet Room 23	40 m ²	430 ft ²
Cabernet Room 24	40 m ²	430 ft ²
Cabernet Room 25	40 m ²	430 ft ²
Cabernet Room 26	40 m ²	430 ft ²
Cap Classique Room 27	80 m ²	861 ft ²
Cap Classique Room 28	103 m ²	1,108 ft ²

THE GARDEN WING – GROUND FLOOR

ROOM TYPE AND NUMBER	SIZE OF ROOM IN SQ METRES	SIZE OF ROOM IN SQ FEET
Shiraz Room 11	31 m ²	334 ft ²
Merlot Room 12	39 m ²	420 ft ²
Pinotage Suite 14	62 m ²	667 ft ²
Pinotage Suite 29	83 m ²	893 ft ²

THE GARDEN WING – FIRST FLOOR

ROOM TYPE AND NUMBER	SIZE OF ROOM IN SQ METRES	SIZE OF ROOM IN SQ FEET
Merlot Room 15	35 m ²	377 ft ²
Merlot Room 16	33 m ²	355 ft ²
Shiraz Room 17	30 m ²	323 ft ²
Merlot Room 18	39 m ²	420 ft ²
Merlot Room 19	35 m ²	377 ft ²
Shiraz Room 20	30 m ²	323 ft ²

THE MANOR WING – FIRST FLOOR

ROOM TYPE AND NUMBER	SIZE OF ROOM IN SQ METRES	SIZE OF ROOM IN SQ FEET
Pinotage Suite 30	76 m ²	818 ft ²
Pinotage Suite 31	64 m ²	689 ft ²
Shiraz Room 32	31 m ²	334 ft ²
Merlot Room 33	45 m ²	484 ft ²

NB: All room measurements include the bathroom but not any outside space

UK HEAD OFFICE

T: +44 (0)208 600 0430

E: enquiries@virginlimitededition.com

US OFFICE

T: + 1 (212) 994 3070

E: enquiriesusa@virginlimitededition.com

SA REGIONAL OFFICE

T: + 27 (0)11 325 4405

E: enquiries@virginlimitededition.co.za