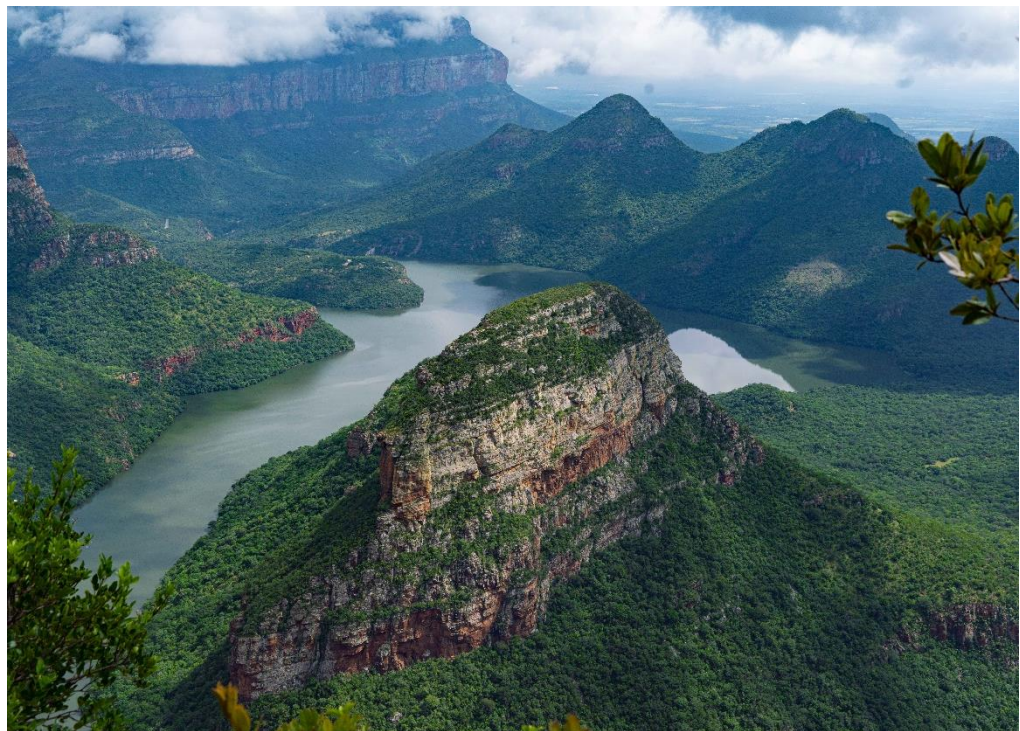




## OFF-SITE ACTIVITIES AT CAPE VULTURE CONSERVANCY



reservations@capevulturelodge.co.za • +27(0) 76 362 0390 • www.capevulturelodge.co.za



# BLYDE RIVER CANYON BOAT CRUISE



Enjoy a beautiful scenic Boat Cruise on the Blyderivierspoort in the Blyde River Canyon. The Canyon is a place of pure untouched beauty and is best seen and experienced from the water on a comfortable, 20-seater pontoon boat. You will be guided and accompanied by an experienced skipper with a wealth of knowledge and passion for the Canyon. This is your opportunity to see the famous Three Rondavels and the Blyde River Canyon from the angle it's supposed to be seen. While you're on the water, at the base of the towering mountains that form these breath-taking sights you can also tick off those last couple of birds that have been looking for on your bird list and enjoy seeing the hippo's and crocodiles that make this dam their home.

## IMPORTANT INFORMATION

- Dependant on availability.
- Duration of Boat cruise: 1 hour 30 minutes
- What to wear: Be prepared for all weather conditions.
- Things to bring: Sunscreen, hat, camera and binoculars (*should you have*).
- Activity is weather dependant.
- Regrettably no children under the age of 2 years allowed.
- Time schedule:

|           | Depart From the Lodge |
|-----------|-----------------------|
| Morning   | 07:15                 |
| Afternoon | 13:15                 |

- Activity needs to be pre-booked at least 24 hours in advance.
- Payment will be added to your account and paid at the end of your stay. Terms and conditions apply.

- \* Rates available on request. All rates are vat inclusive.
- \* Management reserves the right to change the rates at any given time.

### Included:

- \* Transfer to activity
- \* Complimentary water
- \* Snacks
- \* All entrance fees

### Excluded:

- \* Additional beverages



# KRUGER NATIONAL PARK – FULL DAY TRIP



It has been said that even an hour in paradise is a rewarding experience and this can also be said to be true of Africa's greatest wildlife sanctuary, the Kruger National Park. An hour is rewarding, but a whole day is a life-changing experience. For an authentic safari experience, our full day Kruger National Park trip will give you an unbelievable overview of this iconic destination. Game viewing from open safari vehicles in the Kruger National Park must be one of the ultimate safari experiences in Africa and being able to do this in a day is ideal for those with limited time available.

## IMPORTANT INFORMATION

- Dependant on availability.
- Duration: Full day
- What to wear: Be prepared for all weather conditions and wear comfortable clothes.
- Things to bring: Sunscreen, hat, camera and binoculars (*should you have*).
- The trip is conducted in an open 4 x 4 safari vehicle.
- Activity is weather dependant. We will give you the option to reschedule your trip or we issue a refund.
- Time schedule:

|                |                              |
|----------------|------------------------------|
|                | <b>Depart From the Lodge</b> |
| <b>Morning</b> | 05:00                        |

- Activity needs to be pre-booked at least 24 hours in advance.
- Payment will be added to your account and paid at the end of your stay. Terms and conditions apply.

- \* Rates available on request. All rates are vat inclusive.
- \* Management reserves the right to change the rates at any given time.

### Included:

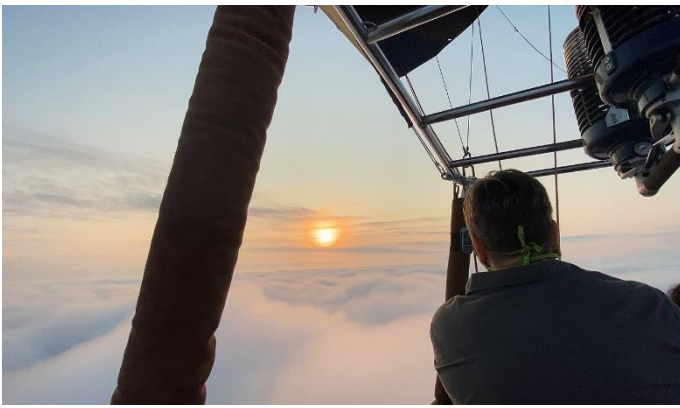
- \* Full day trip in an open safari vehicle
- \* Complimentary water
- \* Packed lunch
- \* All entrance fees

### Excluded:

- \* Additional beverages
- \* Additional snacks
- \* Curios



# HOT AIR BALLOON



Experience the magic of lighter-than-air flight near the foot of the Drakensberg escarpment. Book your one-hour long flight over the scenic Lowveld section of the Blyde River. The terrain is a mixture of farmland, private nature reserves and wildlife estates. The mountains provide good shelter from the prevailing winds making it good for good weather for flying on most days. As the sun rises, the landscape, the vegetation and, if you're lucky, some wildlife will provide photo opportunities. Game spotting cannot be guaranteed but, on most flights, we see plains game like giraffe and wildebeest.

## IMPORTANT INFORMATION

- Dependant on availability.
- Duration of Balloon Flight: 1 hour
- What to wear: Be prepared for all weather conditions. Comfortable shoes such as running shoes or light hikers and not high heels, sandals, flip-flops, or open toed footwear. Long pants since shorts will not protect you from vegetation at the landing site. Do not wear a skirt or dress. Keep all loose clothing, long hair, jewellery, or other loose items under control at all times to prevent them from being tangled in cables, ropes or the inflation fan.
- Things to bring: Sunscreen, hat, camera and binoculars (*should you have*).
- Activity is weather dependant. We will give you the option to reschedule your trip or we issue a refund.
- Passengers must be fit enough to stand unassisted for an hour and must also be able to climb in and out of the basket.
- No children under the age of 7 years.
- Children are welcome but should be at least 1.2m tall, so that they can see over the rim of the basket.
- Regrettably, women thar are pregnant may not participate on the balloon flight.
- Time schedule:

|                  | Depart From the Lodge |
|------------------|-----------------------|
| Morning - Summer | 04:00                 |
| Morning - Winter | 05:10                 |

- Activity needs to be pre-booked at least 24 hours in advance.
- Payment will be added to your account and paid at the end of your stay. Terms and conditions apply.

- \* Rates available on request. All rates are vat inclusive.
- \* Management reserves the right to change the rates at any given time.

### Included:

- \* Transfer to activity
- \* Complimentary water
- \* Coffee, tea and juice
- \* All entrance fees

### Excluded:

- \* Additional beverages





# SAFARI HORSE BACK RIDING



As you leave the stables, you will enter the Hoedspruit Wildlife Estate for a safari like no other. There is no loud sound of an engine, only the clip-clop of horse's hooves, as you search for animals while winding your way through the African bush. The estate is home to giraffe, zebra, wildebeest, waterbuck, nyala, impala, kudu, steenbok, duiker, warthog and leopard to name a few, however, the chances of seeing all of these can never be guaranteed but it's the anticipation of what's around the next corner that makes the bush so exciting. The trail follows a riverine course, which contains two dams, where one can hope to see a variety of game quenching their thirst. Whether you're a bird watcher, animal lover or just here for the ride, a horseback trail is the perfect way to experience the bush in its most natural form.

## IMPORTANT INFORMATION

- Dependant on availability.
- Duration: 1 hour or 2 hours trail rides
- What to wear: Be prepared for all weather conditions and wear closed, comfortable shoes and long pants or jeans. Riding helmets are provided.
- Things to bring: Sunscreen and camera (*should you have*).
- Regrettably, there is a strict 85kg weight limit.
- The minimum age is 6 and the maximum age is 65, however, exceptions will be made depending on your riding experience.
- Activity is weather dependant.
- Time schedule:

|           | Depart From the Lodge |
|-----------|-----------------------|
| Morning   | 07:30                 |
| Afternoon | 13:00                 |

- Activity needs to be pre-booked at least 24 hours in advance.
- Payment will be added to your account and paid at the end of your stay. Terms and conditions apply.

- \* Rates available on request. All rates are vat inclusive.
- \* Management reserves the right to change the rates at any given time.

### Included:

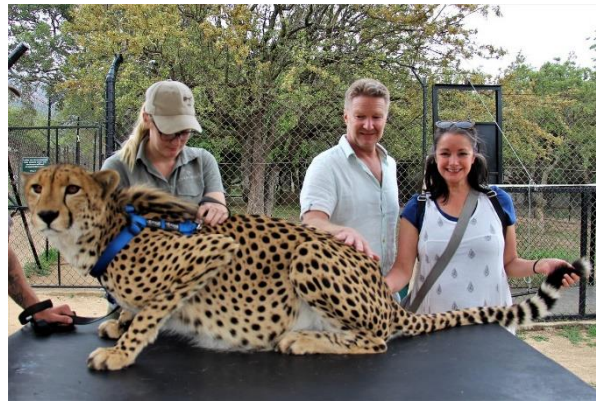
- \* Transfer to activity
- \* Complimentary water
- \* Riding helmet
- \* All entrance fees

### Excluded:

- \* Additional beverages



# MOHOLOHOLO



Situated in the shadow of the majestic "Mariepskop" which forms part of the mighty Drakensberg mountains, this unique Wildlife Rehabilitation Centre is the home to many of South Africa's abandoned, injured and poisoned wildlife. To get an up close and personal experience of these incredible creatures and with the hands-on approach they have the ability to demonstrate to the public the threats and problems our wildlife is facing today. The Centre has a long standing and successful Serval Breeding Project and more than 160 have successfully been reintroduced to areas where they have become extinct. They are actively involved in research on the movement and behaviour of leopards and on a few vulture species that they monitor daily at their "vulture restaurant". A visit to the Centre is "an experience of a lifetime" and will leave you with lasting memories.

## IMPORTANT INFORMATION

- Dependant on availability.
- Duration: 2 hours to 2 hour 30 minutes
- What to wear: Be prepared for all weather conditions and wear comfortable clothes.
- Things to bring: Sunscreen, hat and camera (*should you have*).
- The trip is conducted in an open 4 x 4 safari vehicle.
- Activity is weather dependant. We will give you the option to reschedule your trip or we issue a refund.
- Time schedule:

|           | Depart From the Lodge |
|-----------|-----------------------|
| Morning   | 08:30                 |
| Afternoon | 14:00                 |

- Activity needs to be pre-booked at least 24 hours in advance.
- Payment will be added to your account and paid at the end of your stay. Terms and conditions apply.

- \* Rates available on request. All rates are vat inclusive.
- \* Management reserves the right to change the rates at any given time.

### Included:

- \* Transfer to activity
- \* Complimentary water
- \* All entrance fees

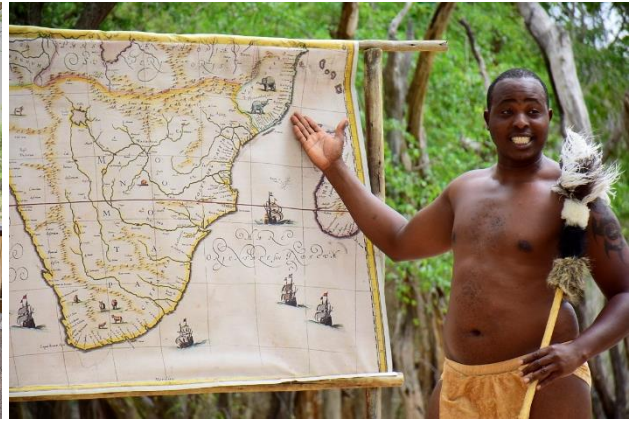
### Excluded:

- \* Additional beverages





# NYANI CULTURAL VILLAGE TOUR



A visit to the Lowveld is incomplete without a visit to Nyani Village & the Cultural Experience "Roots of Rhythm" tribal show. In an informative and entertaining way, Roots of Rhythm performers provide visitors with a better understanding of the rich cultural background of the Limpopo Tribes, identifying the history and traditions of the indigenous people through costumes, dance styles and rhythms.

## IMPORTANT INFORMATION

- Dependant on availability.
- Duration of show: 2 hours
- What to wear: Be prepared for all weather conditions and wear comfortable clothes.
- Things to bring: Sunscreen, hat and camera *(should you have)*.
- Activity is weather dependant.
- Time schedule:

|                |                              |
|----------------|------------------------------|
|                | <b>Depart from the Lodge</b> |
| <b>Morning</b> | 10h10                        |

- Activity needs to be pre-booked at least 24 hours in advance.
- Payment will be added to your account and paid at the end of your stay. Terms and conditions apply.

- \* Rates available on request. All rates are vat inclusive.
- \* Management reserves the right to change the rates at any given time.

### Included:

- \* Transfer to activity
- \* Complimentary water
- \* All entrance fees

### Excluded:

- \* Additional beverages (cash only)
- \* Curios (cash only)



# NOURISH ECO VILLAGE TOUR



Walk through the local village with a guide from Sigagule, for a better understanding about his community, the Shangaan culture, and traditional beliefs and folklore. Meeting one of the local grannies who will show you their traditional mat weaving skills, learnt generation after generation. After that, you will deserve a special treat, tasting her home-made peanut butter. The guide will share stories about beliefs, lifestyles, culture and social dynamics as you walk through the village giving you deeper insight into life in rural Africa. You will finish the tour at a traditional healer (Sangoma) who will explain his age-old trade.

## IMPORTANT INFORMATION

- Dependant on availability.
- Duration: 2 hours 30 minutes to 3 hours
- What to wear: Be prepared for all weather conditions and wear comfortable clothes.
- Things to bring: Sunscreen, hat and camera (*should you have*).
- Activity is weather dependant.
- There is also a curio shop on site and has curios which has been hand made.
- Time schedule:

|                |                              |
|----------------|------------------------------|
|                | <b>Depart From the Lodge</b> |
| <b>All day</b> | Depends on availability      |

- Activity needs to be pre-booked at least 24 hours in advance.
- Payment will be added to your account and paid at the end of your stay. Terms and conditions apply.

- \* Rates available on request. All rates are vat inclusive.
- \* Management reserves the right to change the rates at any given time.

### Included:

- \* Transfer to activity
- \* Complimentary water
- \* All entrance fees

### Excluded:

- \* Additional beverages
- \* Additional snacks
- \* Curios





# GRASKOP DAY TOUR



Prepare yourself for one of the most adventurous experiences of your life as you travel along the upper escarpment of the Panorama Route. While travelling on this breath-taking route you will be heading towards the Graskop Gorge Lift. Embrace your inner child as you descend 51 meters into an indigenous forest. Once you have descended into the Gorge, you will truly feel part of the forest as you get to explore this lush wonderland via a 600m trail made of wooden walkways and swing bridges. The Afromontane Forest is a playground that will amaze you with its vivid green canopy of trees and its spectacular diversity of plants, animals, insects and birds. For the adventurous you will have the choice to take let your adrenaline pump and jump off from the Big Swing. If the Big Swing is not for you and you would like to do something different you could also do the Zip Line over the Gorge. Should you be up for more you can do both activities as a combo. After you have soaked in all this adventure you will have the opportunity to have lunch at the top of the Gorge while overlooking the beautiful waterfall and panorama views before heading back to the Lodge

## IMPORTANT INFORMATION

- Dependant on availability.
- Duration: Full day
- What to wear: Be prepared for all weather conditions and wear comfortable clothes.
- Things to bring: Sunscreen, hat and camera (*should you have*).
- Curio shops are available should you want to buy something to take back home.
- Zipline: Age limit 7+ years & Weight limit 120kg
- Big Swing: Age limit 12+ years & Weight limit 135kg
- Activity is weather dependant.
- Time schedule:

|                |                              |
|----------------|------------------------------|
|                | <b>Depart from the Lodge</b> |
| <b>Morning</b> | 07:00                        |

- Activity needs to be pre-booked at least 24 hours in advance.
- Payment will be added to your account and paid at the end of your stay. Terms and conditions apply.

- \* Rates available on request. All rates are vat inclusive.
- \* Management reserves the right to change the rates at any given time.

### Included:

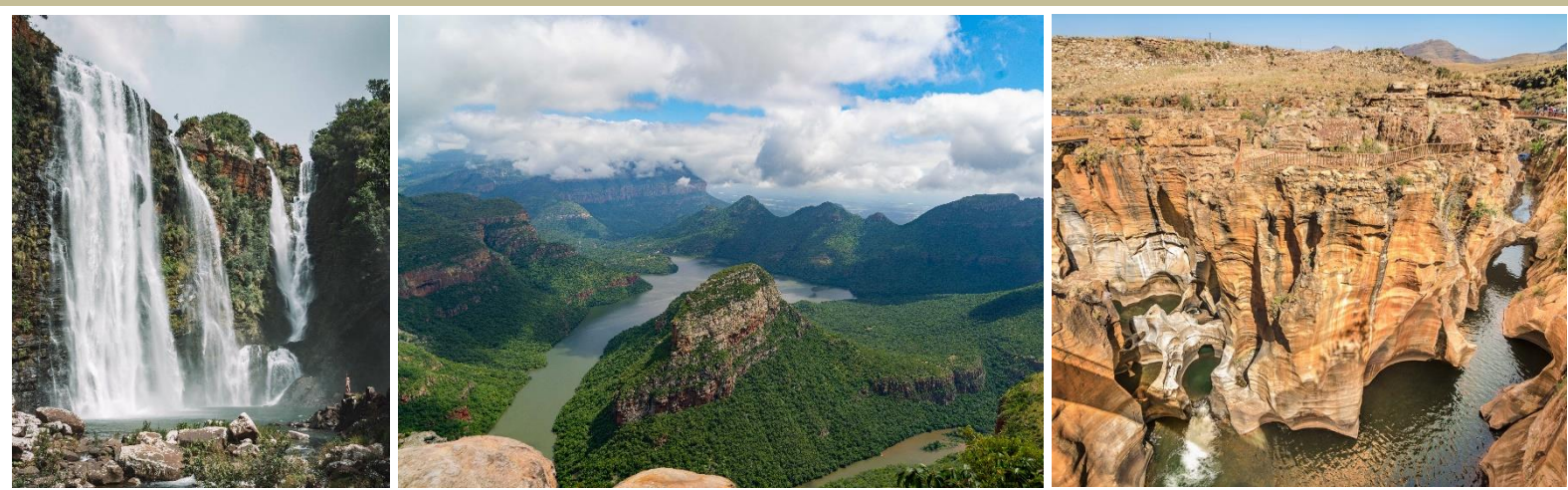
- \* Transfer to activity
- \* Complimentary water
- \* All entrance fees
- \* Lunch

### Excluded:

- \* Additional beverages
- \* Additional snacks
- \* Curios



# PANORAMA ROUTE TOUR



One of South Africa's most scenic areas, the Panorama Route refers to the escarpment in Mpumalanga Province, where the Drakensberg mountains separate the Highveld from the Lowveld to the east. Studded with numerous waterfalls, spectacular viewpoints and geographical phenomena and a breath-taking canyon, it's easy to see why it's such a popular tourist destination. The route passes an abundance of rivers, waterfalls, natural rock formations, viewpoints with endless vistas and the famous Blyde River Canyon. You will have the opportunity to fully immerse yourself into the natural landscape with 360-degree views of the Three Rondavels, Bourke's Luck Potholes, Lisbon Falls (2<sup>nd</sup> highest waterfall in South Africa and the highest in Mpumalanga), God's Window and Gorge Lift.

## IMPORTANT INFORMATION

- Dependant on availability.
- Duration: Full day
- What to wear: Be prepared for all weather conditions and wear comfortable clothes.
- Things to bring: Sunscreen, hat and camera (*should you have*).
- Activity is weather dependant.
- There are also curio shops at the viewpoints should you want to buy any gifts.
- Time schedule:

|         |                       |
|---------|-----------------------|
|         | Depart From the Lodge |
| Morning | 07:00                 |

- Activity needs to be pre-booked at least 24 hours in advance.
- Payment will be added to your account and paid at the end of your stay. Terms and conditions apply.

- \* Rates available on request. All rates are vat inclusive.
- \* Management reserves the right to change the rates at any given time.

### Included:

- \* Transfer to activity
- \* Complimentary water
- \* All entrance fees
- \* Packed lunch

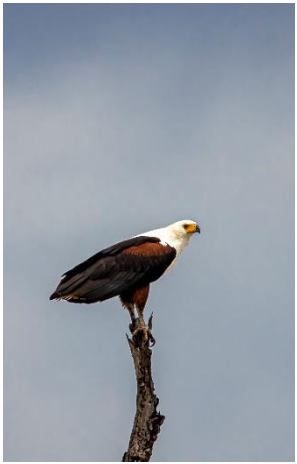
### Excluded:

- \* Additional beverages
- \* Additional snacks
- \* Curios





# BIG 5 GAME DRIVE



The Big 5 game drive offers exciting open vehicle safaris on a Private Game Reserve which is home to the Big Five - elephant, rhino, leopard, lion and buffalo - as well as many other incredible wildlife species. With amazing safari guides you will experience a unique insight into the African wilderness on either a morning or afternoon sunset game drive, experiencing the thrill of wild Africa and up-close encounters with its most iconic animals. The game drives also immerse guests in the importance of conserving and protecting wilderness areas and provides incredible knowledge and understanding of the environment and what we need to be doing to protect it for generations yet to come. Going on safari is a novelty for some people, a break from regular life.

## IMPORTANT INFORMATION

- Dependant on availability.
- Duration of Safari: 4 hours to 4 hours 30 minutes
- What to wear: Be prepared for all weather conditions and wear comfortable clothes.
- Things to bring: Sunscreen, hat, camera and binoculars (*should you have*).
- Activity is weather dependant.
- Time schedule:

|                    | Depart from the Lodge - Summer | Depart from the Lodge - Winter |
|--------------------|--------------------------------|--------------------------------|
| Morning            | 04:00                          | 05:00                          |
| Afternoon (sunset) | 14:30                          | 13:30                          |

- Activity needs to be pre-booked at least 24 hours in advance.
- Payment will be added to your account and paid at the end of your stay. Terms and Conditions apply.

- \* Rates available on request. All rates are vat inclusive.
- \* Management reserves the right to change the rates at any given time.

### Included:

- \* Transfer to activity
- \* Complimentary water
- \* All entrance fees
- \* Morning - Coffee, tea & snacks
- \* Afternoon - One beverage per person & Snacks

### Excluded:

- \* Additional beverages



# QUAD BIKE RIDES



You will travel along scenic routes accompanied by a guide who will take you through to the most beautiful places you have ever seen. This beautiful area known as the Lowveld is known for its diversity in all aspects. You will be left speechless experiencing the variety there is the fauna and flora of South Africa. The guide takes you on an adventure and tells you all the ins and outs about the animals and their living environment. A different form of safari in South Africa through the bush in search of African wildlife. Spot giraffes, buffaloes, rhino and many other animals from your quad. Feel completely free on your quad and go on a journey of discovery.

## IMPORTANT INFORMATION

- Dependant on availability.
- Duration of Quad bike ride: 1 hour
- What to wear: Be prepared for all weather conditions and wear comfortable clothes and closed shoes.
- Things to bring: Sunscreen, hat and camera (*should you have*)
- Activity is weather dependant.
- Time schedule:

|                |                              |
|----------------|------------------------------|
|                | <b>Depart From the Lodge</b> |
| <b>All day</b> | Depends on availability      |

- Activity needs to be pre-booked at least 24 hours in advance.
- Payment will be added to your account and paid at the end of your stay. Terms and conditions apply.

- \* Rates available on request. All rates are vat inclusive.
- \* Management reserves the right to change the rates at any given time.

### Included:

- \* Transfer to activity
- \* Complimentary water
- \* All entrance fees

### Excluded:

- \* Additional beverages





# SCENIC HELICOPTER FLIGHT



With the spectacular African bush and gorges on our doorstep and the Blyde mountains within sight, we have the perfect playground where flight enthusiasts and adventurers alike can explore this magnificent area from a vulture's point of view. You will fly over various privately owned reserves and farmland. The possibility of spotting general game such as zebra, giraffe, impala etc. is also a bonus from the flight.

## IMPORTANT INFORMATION

- Dependant on availability.
- Duration of flight: 1 hour (includes charter to and from the helicopter hanger).
- What to wear: Be prepared for all weather conditions and wear comfortable clothes.
- Things to bring: Camera and binoculars (*should you have*).
- Activity is weather dependant.
- The Helicopter can take up to 3 people.
- The helicopter will pick you up and drop you off on the Cape vulture lodge property.
- Children of all ages are welcome.
- Time schedule:

|                |                              |
|----------------|------------------------------|
|                | <b>Depart From the Lodge</b> |
| <b>All day</b> | Depends on availability      |

- Activity needs to be pre-booked at least 24 hours in advance.
- Payment will be added to your account and paid at the end of your stay. Terms and conditions apply.

- \* Rates available on request. All rates are vat inclusive.
- \* Management reserves the right to change the rates at any given time.

### Included:

- \* Transfer to activity
- \* Complimentary water

### Excluded:

- \* Additional beverages



# REPTILE CENTRE TOUR



You will have the opportunity to visit the Reptile Park where you can walk through the Centre on your own and view the many spectacular animals on display. One can read the easy to understand and informative display legends which provide interesting facts and information about our animals. Although the Centre does not have tour guides, the Reptile Park family is always willing to help with any questions that you may have. There are no set times for shows or demonstrations, but our staff will let you know if there is a demonstration or feeding event during your visit.

## IMPORTANT INFORMATION

- Dependant on availability.
- Duration: Dependant of how much time you spend but can take up to 1 hour
- What to wear: Be prepared for all weather conditions and wear comfortable clothes.
- Things to bring: Sunscreen, hat and camera (*should you have*).
- Activity is weather dependant.
- All small reptiles are displayed in glass rooms or big reptile are displayed in big cement rooms.
- Children of all ages are welcome.
- Time schedule:

|                |                              |
|----------------|------------------------------|
|                | <b>Depart From the Lodge</b> |
| <b>Mid-day</b> | Depends on availability      |

- Activity needs to be pre-booked at least 24 hours in advance.
- Payment will be added to your account and paid at the end of your stay. Terms and conditions apply.

- \* Rates available on request. All rates are vat inclusive.
- \* Management reserves the right to change the rates at any given time.

### Included:

- \* Transfer to activity
- \* Complimentary water
- \* All entrance fees

### Excluded:

- \* Additional beverages
- \* Reptile interactions

