

Hondo Hondo



udzungwa forest camp

OTHER ACTIVITIES OFFERED AT HONDO HONDO

- Cycling (½ day or full day)
- Mang'ula Village Tour (2hrs, on foot)
- Traditional Ngoma Drumming (evening after dinner)
- Dugout Canoeing on the Kilombero River down at Ifakara (½ day)
- Rubber plantation visit (2hrs)
- Magombera Monkey Forest – (½ day)

Mang'ula Village Tour – \$15 per person

Mang'ula is a picturesque rural Tanzanian village across the road from Hondo Hondo. Situated at the base of the Udzungwa Mountains escarpment where the soil is fertile, the village benefits from a very good rainy season and plentiful water coming off the mountains year round. Like most villages, the centre is a bustling and chaotic muddle of small dukas (shops), mechanics workshops, rice mills and colourful market stands. Radios compete for the loudest position while tradesmen and customers alike do the same! The vibrant shop fronts are set against the red earth of the bumpy roads, all with the vivid forest green of the mountains in the background. Women at home call out their daily news to their neighbours, while hand milling the maize or sorting through rice - all grown locally in the Kilombero Valley.



Traditional Ngoma Drumming – \$120 per group

With the support and encouragement of Hondo Hondo, a small group of village farmers have formed a drumming group who perform a traditional “Ngoma” (meaning drum in KiSwahili) at Hondo Hondo on request. They also perform in the village at celebrations, weddings and at the end of the harvest. Some of the music is instrumental, with drums, percussion, whistles and some wind instruments and has a very energetic rhythm. The words to the songs are generally ad-lib (created live) and refer to current events and situations. This is a truly atmospheric experience beside a large log fire.



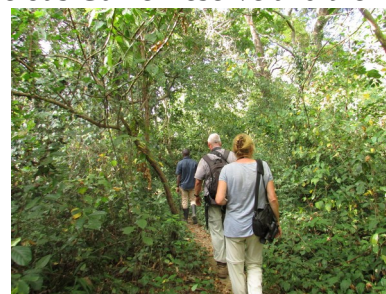
Rubber plantation – \$20 per person (excl transfer)

Across the TAZARA railway line in Mang'ula is a sizeable rubber plantation, recently privatized after being mismanaged by the state since 1974. The tour takes about 2 hours, and will give you a comprehensive knowledge into the process of extracting the latex, and preparing it for export. The general manager will be your guide, and answer any questions you have. You can go by car, or cycle there. We recommend a cycle ride as the route takes you through the surrounding shamba land, villages and sugar plantations.



Magombera Monkey Forest – \$20 per person (excl transfer)

Magombera is a unique lowland tropical forest that lies between the Selous Game Reserve and the Udzungwa Mountains National Park. Lowland tropical forests are among the world's most threatened ecosystems and a guided walk in Magombera provides the opportunity to observe the biodiversity in this stunning habitat first-hand. Troops of Blue Monkeys, Udzungwa Red Colobus and Black and White Colobus are easy to see. It has the added advantage that a portion of the entrance fee goes to the surrounding communities. You can also cycle here with a guide. Excellent for birding enthusiasts, you may get a chance to see the *Pels Fishing Owl*! Newly gazetted as a nature reserve.



Dugout Canoeing on the Kilombero River – \$50 per person (excl transfer)

Just past Ifakara, on the Kilombero river. We offer canoe trips in the local fisherman dugout canoes, so you can relax while you are punted upstream with a long pole. It's likely you'll see Hippos, Nile monitor lizards and many, many water birds, including the endemic *Kilombero Weaver* and if you're really lucky, an *African Skimmer*. You'll see many fishermen in their smaller dugout boats. Excellent for birding enthusiasts!



Cycling - \$15 ½ day / \$25 full day per person (self guided or an extra \$10 per group with a guide)

A popular activity from Hondo Hondo is cycling. Come with your own bike, or rent one. We have a selection of bike sizes for all ages. Unfortunately there are no cycling trails within the National Park itself, but the valley provides plenty of great cycling terrain full of things to see. It is possible to go with one of our guides to explore the local rural villages, and this provides a great opportunity for photography and interaction with rural Tanzanian life. Intrepid explorers can go even further, out onto the Kilombero Floodplains through sugar plantations, local shamba (farms) and open bush land. The cycling is generally easy, as the valley is mostly very flat. It can however, be quite wet in some areas so be prepared for a muddy adventure!

