



ADAMAS

HOUSE HOTEL

Cuenca N7-37 entre Olmedo y Manabí.

Quito – Centro Histórico.

Contacto 593980389837

HISTORY

ADAMAS HOUSE HOTEL It is a property that has its origin since 1534 inhabited by Hispanic conquerors. It is part of the old hill known as Chilena Pata and its first cartographic reference to the property dates back to 1734. Several owners passed through this property which was included in the inventory of the Cultural Heritage of the City. 5 years ago its current owners began its recovery until it became what is now ADAMAS HOUSE HOTEL, a jewel within the historic center..





LOCATION

ADAMAS HOUSE HOTEL It has a privileged location since it is surrounded by museums, churches, parks, squares, houses adorned with beautiful balconies, streets that tell us stories such as the street of sigh among other attractions that can only be appreciated by visiting our beautiful city.

We also have a spectacular view of the fifth façade of the colonial center of Quito, declared the first World Heritage City by UNESCO. And at the foot of the Virgin of Quito we can appreciate the wonderful architecture and culture that the colonial center has. Being close to the new Quito metro which allows us to be accessible to any part of the city for the comfort and safety of our guests.



A COMMITTED TEAM

ADAMAS HOUSE HOTEL we are committed to providing each of our guests with a unique and enjoyable experience. Through our services, location and elegance of our hotel, each visitor can feel cheerful, relaxed and at peace as in their own home.

Contact us

Address: Cuenca 7-37 y José Joaquín Olmedo

Quito – Historic Center – Ecuador

Sales (lunes- viernes) 9h00 – 17h00:

Email: reservas@adamashotel.com

Contacto 593980389837

Web: www.adamashotel.com

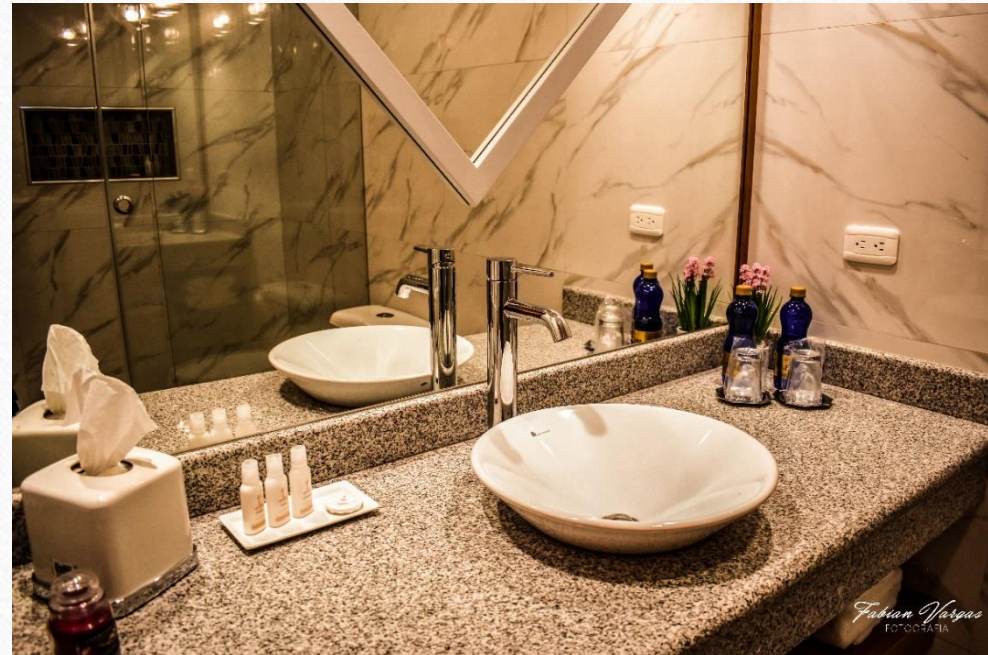


ROOMS AND SUITES ADAMAS HOUSE HOTEL

They have single, double and triple rooms with King, Queen and Twin beds is distributed over three floors. Due to the historic architecture of the house, the rooms vary in size between 24 to 70 square meters.

Comfortable, spacious and elegant rooms consist of desks, closets, tables, chairs, luxurious sheets, full bathrooms, safe, Wi - Fi, 32-inch flat screen TV with DIRECTV, smoke-free, noise-free, with a fine decoration and cozy atmosphere. All rooms have access to the garden and terrace. Enjoy accommodation of luxury, comfort and elegance in the colonial center of Quito.

1.- STANDARD DOBLE On the ground floor, with direct access to the patio and vertical garden our guests can rest and enjoy their room with a wonderful view of nature as well as a delicious coffee in the middle of a romantic rain at sunset. SIZE: 25 square meters CAPACITY: 2 people EXPLORE YOUR ROOM



2.- PREMIUM KING On the ground floor, with direct access to the patio and vertical garden our guests can rest and enjoy their room with a wonderful view of nature as well as a delicious coffee in the middle of a romantic rain at sunset. SIZE: 25 square meters CAPACITY: 1-2 people EXPLORE YOUR ROOM



3.- SUITE LUXURY Start your mornings with an exceptional view of Quito's Historic Center directly from your balcony. On the second floor, in a suite that allows you to enjoy luxury and comfort as well as peace and quiet SIZE: 70 square meters CAPACITY: 2 people, you can include sofa bed maximum 3 people EXPLORE YOUR ROOM



4.- PREMIUM QUEEN BALCONY - Appreciate the mixture of the old with the modern of our city through the balcony of your room, on the second floor, with a spectacular view our guest can enjoy elegance and comfort and at the same time feel relaxed and at peace. SIZE: 35 square meters CAPACITY: 2 people EXPLORE

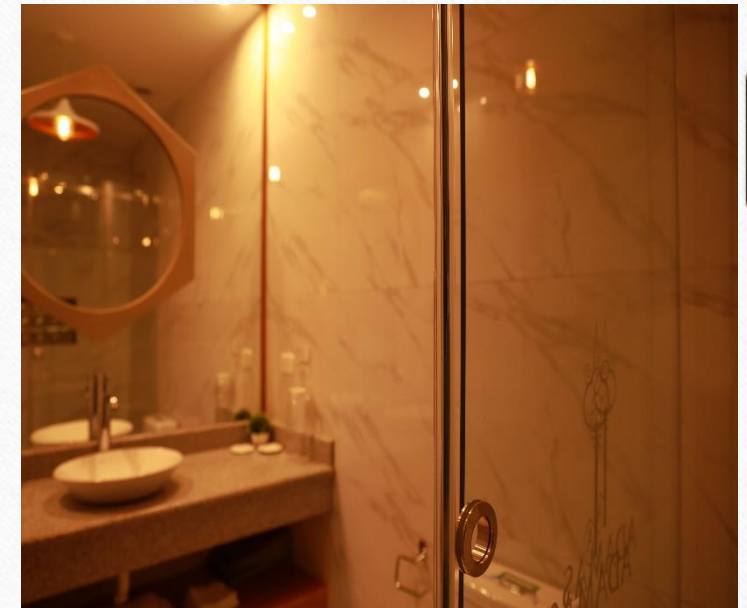
YOUR ROOM:



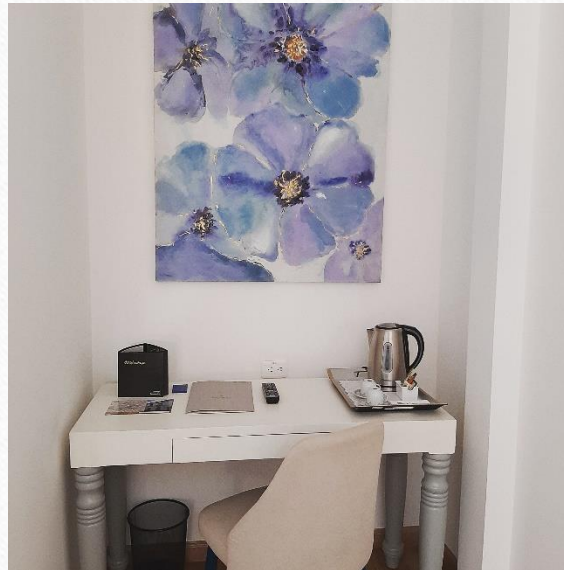
5.- SUITE CONFORT Our city delights us and surprises us every day with its majestic landscapes and Quito customs enjoy all this through our suite with access to the terrace. SIZE: 31 square meters CAPACITY: 2 people
EXPLORE YOUR ROOM



6.- SUITE ELITE Highlighting the advantages of our city and its customs is one of our objectives that is why our suite offers our guest a stay full of new experiences. SIZE: 30 meters CAPACITY: 2 people EXPLORE YOUR ROOM



7.-SUITE FAMILIAR Thinking that our guests can enjoy our city with their friends or family and take a pleasant experience in Adamas house hotel, we thought of this comfortable, pleasant, modern and elegant Suite. SIZE: 52 meters CAPACITY: 4 people EXPLORE YOUR ROOM

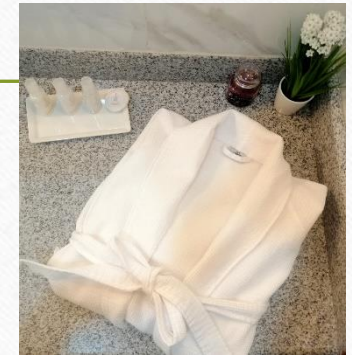


8.-EJECUTIVA In the midst of the connectivity of the old and the modern with an excellent infrastructure and next to the main attractions of our city. Enjoy our rooms and our services that in the end will leave you a great memory of your visit.
SIZE: 25 meters CAPACITY: 2 people EXPLORE YOUR ROOM



Room amenities and services

- ADDITIONAL CHARACTERISTICS
- 32-inch flat-screen 4K smart
- TVDIRECTV with more than 90 national and international channels
- International Direct Dialing Telephone (DDI)Free
- WIFI
- Security box in the room
- Amenities in each of the bathrooms
- 600 thread count cotton duvet, hypoallergenic
- Hypo allergenic thin sheets
- Thermal blankets 2 per room
- Pillow change
- Mini bar (FAMILY ROOM - SUITE DUPLEX ELITE - SUITE WITH BALCONY)
- Private bathroomAlarm clock
- Herbal compresses and hot waterSlippers
- Hairdryer
- Bathroom scale
- Bathrobe



HOTEL SERVICES

CAFETERIA

TERRACE WITH PANORAMIC VIEW OF THE CITY

LAUNDRY SERVICE (paid)

IRONING SERVICE (paid)

CONSERGE

SERVICEPARKING

VERTICAL GARDEN

INTERNAL AND EXTERNAL SECURITY CAMERAS

AIRPORT TRANSFER SERVICE (paid)

WINE CELLAR... EUROPEAN, CHILEAN, ECUADORIAN, ETC.

SPA (As of January 2022)

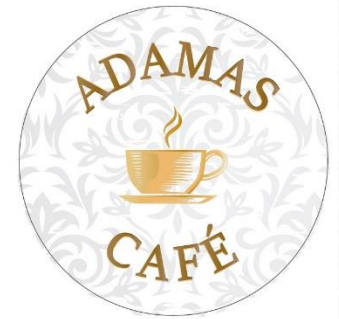


COURTYARD

In the middle of the hotel you will find our patio or interior garden, which was typical of the houses of that time. We rescue it so that our guests feel the peace and tranquility of nature..



ADAMAS CAFETERIA

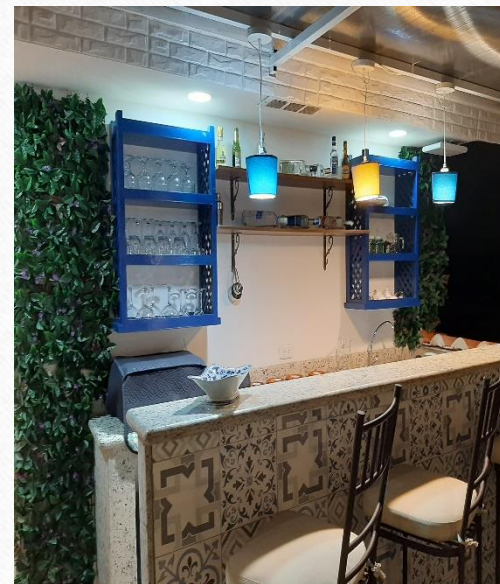


Our hotel has a beautiful and comfortable cafeteria that offers a diversity of dishes based on Quito and Ecuadorian flavors. Feeling at home is one of our main objective and in the comfort and authenticity of the cafeteria you can enjoy Quito's customs and observe the movement of the city through its windows while feeling relaxed and dreamy for its peace and tranquility.



TERRACE

Our terrace allows you to see the fifth facade of the Historic Center of Quito, come and enjoy it with a coffee or a glass of wine. We will wait for you



OTHER SITES OF INTEREST INSIDE THE HOTEL WINE CAVA, BOARD GAMES, GIFT SHOPS, BAR AND BODY MASSAGES.



Reservation policies and conditions

CHECK IN and CHECK OUT Policy

12h00 is established as the deadline for check out, and check in is from 3:00 pm. Late check out will have an additional charge.

CANCELLATION POLICY

- Reservations will be canceled up to 7 days before the arrival date without charge. Otherwise, 25% of the reservation will be charged

Booking conditions

The hotel does not offer gratuity for children. All rooms are for non-smokers. To cancel your reservation, send an email to reservas@adamashotel.com. Changes of reservations will be made via email to reservas@adamashotel.com and confirmation. Infants up to 3 years of age free of charge in the same room as their parents. In case of cancellation in less than 7 days, 100% of the reservation will be charged. While you are at the hotel, you can extend your stay, but we do not guarantee availability. The charge on your card will be made when you have made use of the facilities. Your reservation will be effective immediately with a blocking of funds to guarantee the arrival of the guest. The hotel does not offer additional beds in the rooms, except in the Luxury suite, which is sold as a double, and can accommodate a third guest with an additional charge. The hotel does not have cribs. All rates include 2 breakfasts per room. Additionally, 12% VAT, 10% service and \$ 1.5 city tax per room per night will be charged. Additional cost of breakfast \$ 10.00 tax per person. If you want to change your arrival or departure date, the rate may vary from your original reservation.