



# THE MOLE GUESTHOUSE

SWAKOPMUND- NAMIBIA



## CATALOG

Embark on an Unforgettable Summer Vacation

A Destination That is Perennially Inviting

The Mole Guesthouse B&B offers a welcoming atmosphere for travelers of all budgets. With a steadfast commitment to delivering exceptional customer service, we take pride in providing a nourishing breakfast to kickstart your day.

[www.themoleguesthouse.com](http://www.themoleguesthouse.com)



# Table of Contents

**01 Letter From The Editor**

**02 The Best Facilities**

**03 The Best Breakfast**

**04 Laundry Service**

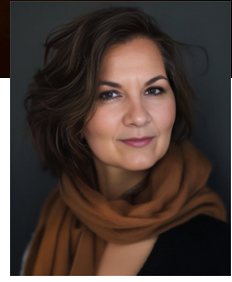
**05 Tour and Excursions**

**06 Restaurants & Markets**

**07 Trip planning**

**08 Terms and Conditions**

**09 Contact Us**



## Letter From The Manager

Coastal Escapades!

Greetings! The Mole Guesthouse in Swakopmund is excited to present an informative catalog for your enjoyment.

This years catalog highlights the top facilities and services available to our guests.

Swakopmund isn't just a pretty face on the Skeleton Coast; it's like the adventure capital of Namibia!

With nearly a thousand miles of coastline, you'd think Namibia would be the star of those fancy beach brochures, but nope!

This beach is like a desert diva, with the Namib Desert strutting right alongside the ocean. What really sets this coastline apart is its sunsets and spine-tingling history—think shipwrecks galore and tales of brave souls lost to the treacherous currents and sneaky sea fog.

In addition, the area is largely deserted, which enhances the sense of mystery!

**We trust that this catalog will prove to be immensely helpful for you. Looking forward to seeing you soon!**

*D. Louw*

# The Best Facilities

Our 22 cozy bedrooms are like a warm hug from your favorite blanket, decked out in charming traditional decor and packed with everything you need for the ultimate chill-out session!



## Family Rooms

**The Family Rooms is a one-room suite with queen-size bed and bunker bed for children 0-12. It is located on ground floor level with a comfortable outside seating area. It has a 39-inch flat screen TV, Fridge, Microwave, Coffee, tea and amenities are supplied. The large bathroom has a 60-inch shower (no tub).**



## Sharing Twin Room

**The double/twin rooms are furnished with two three-quarter beds, an en-suite bathroom, a luggage rack, built-in cupboards, linen, bath towels and free Wi-fi. 39-inch flat screen TV, Coffee, tea and amenities are supplied. Garden Twin rooms have a 39-inch flat screen TV, Fridge, Microwave and working desk.**



## Double Room

**The double rooms are furnished with a double bed, an en-suite bathroom, a luggage rack, cupboards, linen, bath towels and free Wi-fi. Coffee, tea and amenities are supplied. Garden Double rooms have a 39-inch flat screen TV, Fridge and working desk.**



## Luxury Suite

**Get your fix of comfort after a long day, a one-room suite with queen-size bed and located on ground floor level with a comfortable outside garden area. The large bathroom has a 60-inch shower (no tub) It has a 39-inch flat screen TV, Fridge, Microwave, Coffee, tea and amenities and small kitchenette**

# The Ultimate Breakfast

A delightful breakfast with a variety of choices is an excellent way for guests to kick off their day.

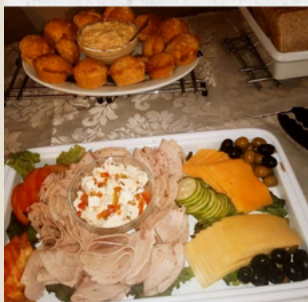
We offer a continental breakfast featuring freshly baked croissants and bread rolls, accompanied by a selection of spreads such as butter, jellies, jams, and marmalade, all paired with a cup of freshly brewed coffee.

Additional beverages are available as well.

Our buffet includes cheese, cold meats, fresh fruit, yogurt, and cereal.

For those who prefer a hot option, you can order bacon and eggs (scrambled or fried) or an omelet, served with a refreshing green salad.

There's always a sweet treat to enjoy, ensuring you have enough energy for an adrenaline-filled day packed with activities in and around Swakopmund.





# Laundry Service

With our laundry service, you can kick back and let your worries vanish like a mirage while you dive into your desert escapade!

You leave it , We clean it



# These epic desert adventures flaunt the jaw-dropping beauty of Namibia's Namib Desert...



Peacefully glide above the desert in a hot air balloon

As the sun wakes up and warms the horizon, picture yourself floating serenely in a hot air balloon above an ancient desert landscape, timeless beautiful.



Living Dunes Experience

At first glance, the dunes of the Namib Desert between Walvis Bay and Swakopmund may seem impressive yet somewhat barren. However, one would be amazed by the diversity and abundance of species in this ecosystem when viewed through the lens of a true Namibian expert.



Sandwich Harbour Half Day

Sandwich Harbour, nestled in Namib Naukluft Park, is like a whimsical wonderland where a sand dune shares a secret rendezvous with the sea.



## Boat cruises

are the ultimate VIP pass for marine life watching! Get ready to rub elbows with a rowdy seal colony at Pelican Point—those cheeky seals love to hitch a ride on your boat! And if you're looking for some splashy fun, dive into a sea of water sports galore! You can even show off your waterskiing skills at the lagoon while those southwesterly winds are basically begging you to kitesurf your heart out!

## Tour and excursions

### Swakopmund, Namibia's charming coastal gem!

It's like a refreshing splash of ocean breeze in the middle of a desert sauna. As the biggest beach town in Namibia, it's the ultimate launchpad for a wild array of adventure shenanigans! But hold on, this isn't your typical sun-soaked paradise. Mornings might have you reaching for a sweater as the sea mist rolls in, thanks to the desert sands having a chilly rendezvous with the Atlantic's frosty waters, creating a mysterious fog.

Yet, those soft sandy beaches give off that dreamy summer holiday vibe!

If you're wondering when to visit, the warmest months to soak up the sun are usually January, February, and March, while the party really kicks off in September when peak season hits!

**The Skeleton Coast** is simultaneously stunning and desolate, ranking among the most inhospitable regions on the planet. Cold ocean currents create an abundance of marine life, yet the waters are not suitable for swimming. Water temperatures seldom exceed 19 degrees Celsius, and rough waves are a common occurrence. This area features vast dunes and is the driest location in sub-Saharan Africa. However, these stark, isolated landscapes attract visitors from all over the world, and rightfully so; it boasts a rich and captivating history and possesses a unique beauty. This significance has led to its protection as part of the Namib-Skeleton Coast National Park.

**Discover the enchanting must-see sights and exhilarating activities:** Swakopmund Museum, Swakopmund Jetty, Extreme Sports, and Nature and Wildlife Tours. For tailored recommendations, we are here to help.

# Restaurants & Markets

The coastal town of Swakopmund attracts both local and international travelers.

The Mole Guesthouse, located just a short walk from the beach and town center, you'll find a diverse array of shops and restaurants. Immerse yourself in the stunning landscapes, rich traditional cultures, exotic coastal cuisine, magnificent views, and stunning sunsets that Swakopmund has to offer. The area buzzes with life, presenting countless dining and drinking options in this delightful vacation hotspot.

Here's a sneak peek of what awaits you...

## Village Café

Loved by locals and tourists alike for its quirky character and good service

## Cafe Anton

If you're in search of the quintessential Swakop experience, Café Anton is the place to be.

Often regarded as one of the town's most famous coffee destinations, it has a timeless charm. Visit for a traditional beer and lunch, or indulge in some delightful coffee and cake.

## Brauhaus

Adorned in classic Bavarian style, complete with memorabilia and flags from around the globe, you may momentarily forget that you are situated in the heart of one of the world's most famous deserts, the Namib.

**Kücki's Pub**     **The Wreck**     **Fork 'n Nice**  
**Altstadt Restaurant**     *too many to list*  
**Brewer & Butcher**  
**Ocean Cellar**  
**BlueGrass**  
**Jetty 1905**  
**The Tug**

## Kavita Craft Market

The African street market is near the beachfront and the lighthouse. There are many sellers with batiks, wooden bowls, clothing, figurines, masks, soapstone



We have gathered the finest options in Swakopmund – explore our top selections for the “must-experience” restaurants



## Airport Pick-ups



*We arrange pick-up for you*

# Trip planning

Don't let the tedium of trip planning steal the joy from your vacation. Allow The Mole Team to take care of the boring details; we'll handle all your restaurant and activity reservations for your getaway.

Our philosophy is simple: book with us, and you can stop planning and start exploring!



## Skydiving



## Boat cruise & Kayaking



## Living Desert



## Spitskoppe Day Trip



## Ballooning



## Sandwich Harbour



# Terms and Conditions

Dear Guest,

We want you to enjoy your time with us, but we are implementing safety measures to ensure your well-being. We kindly ask that you adhere to our rules and regulations. Please know that we are committed to keeping both you and our staff safe!

## **Terms and Conditions for THE MOLE GUESTHOUSE CC**

Booking Notices

Maximum 2 people per Twin/Double Room.

**NO UN REGISTERD GUEST ALLOWED IN ROOMS  
VISITORS MUST REGISTER AT FRONT DESK –  
ONLY VISITS OUTSIDE IN THE GARDEN AREA  
AND BE OFF THE PREMISES AT 19H00.**

## **Payment Terms**

Please note: The Guesthouse “First Pay then Stay” Payment Policy  
Confirm bookings to secure your stay with us.

Full payment is due on receipt of proforma invoice/confirmed confirmation,  
Payment can be made by electronic bank transfer (EFT) Bank information on  
the bottom of your confirmation, please email proof of payment to:  
reservations@themoleguesthouse.com.

Bank charges are not included in the rates and are for your account.

### **Cancellation fees will be incurred as follows:**

31 days and more prior to arrival: 0%

30-21 days prior to arrival date: 50%

20-8 days prior to arrival date: 75%

7- 0 days before arrival 100% of total booking value

100% of total booking value for non-arrival or no show

No cancellation fees will be waived after notice period has lapsed.

PLEASE NOTE:

**NO CASH REFUNDS**

Rates are subject to availability, currency fluctuations, seasonality & website updates.

All information is subject to change without notice. Terms & conditions apply.

# THE MOLE GUESTHOUSE SWAKOPMUND - NAMIBIA

## Contact Us



+264 811460999

+264 64 460999



[reservations@themoleguesthouse.com](mailto:reservations@themoleguesthouse.com)



[www.themoleguesthouse.com](http://www.themoleguesthouse.com)



Werft/Strand str 6 - Swakopmund

