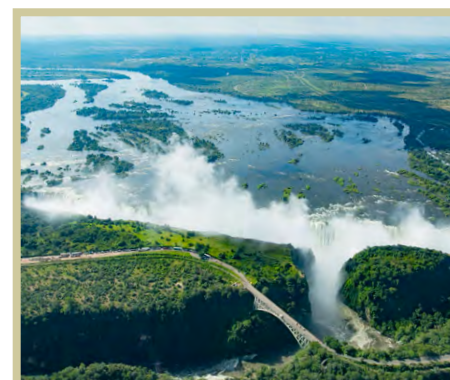


A new dimension of luxury on the Zambezi River



The Palm River Hotel offers 73 rooms of unparalleled luxury situated along the banks of the iconic Zambezi River, among towering indigenous trees and only 4 kilometres from Africa's Natural World Wonder, Victoria Falls. Conveniently located just 5 minutes' drive from Victoria Falls town centre, the hotel introduces a new dimension of 5-star luxury without compromising a sense of home comfort and tranquillity.

Elegantly appointed river-facing room and suite varieties include, 60 Deluxe Rooms, 2 Deluxe Suites inclusive of 2 bedrooms each, 2 Honeymoon Suites, 3 Executive Suites, 1 Presidential Suite and a private Villa inclusive of 3 spacious bedrooms. Each room offers expansive views of the mighty Zambezi River.



Deluxe Rooms - 60

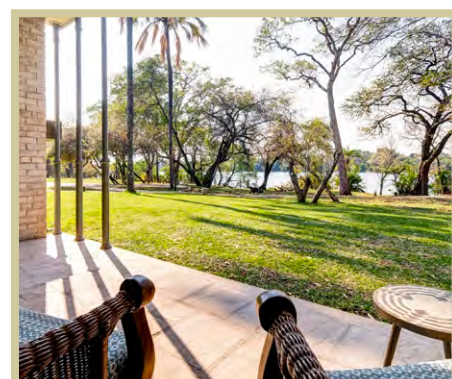
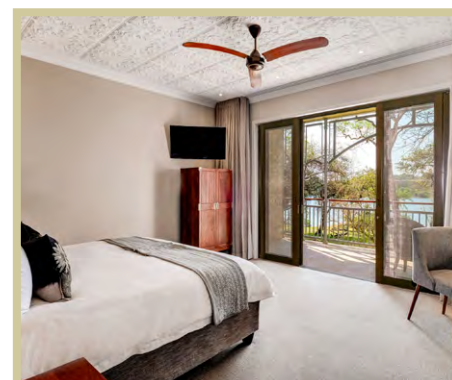
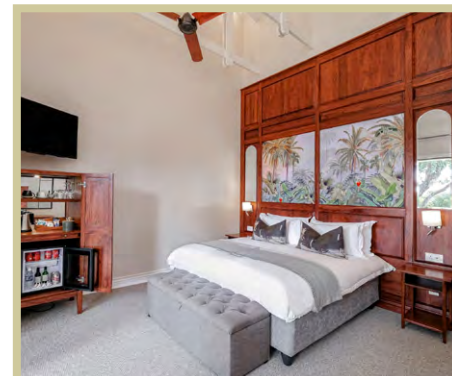
Interleaving room options available

Well-appointed with modern international 5-star hotel furnishings, all Deluxe Rooms include a private balcony where guests can enjoy views of the Zambezi River and the gardens. The spacious bedroom is complete with a writing desk, complimentary Wi-Fi, satellite television, air conditioning, electronic safe, a fully equipped tea & coffee station and a minibar with a complimentary initial stocking.

A generous fixed wardrobe space includes shelves and ample hanging space and the clean lines of the contemporary bathroom feature an open and spacious shower, a double vanity and all the amenities necessary to compliment an idyllic stay.

Amenities

- Private river-facing balcony
- Complimentary Wi-fi
- Tea & Coffee facilities
- Electronic safe
- Daily housekeeping
- International & USB charging points
- Water-efficient rainfall showers
- Air conditioning
- Ceiling fan
- Satellite Television
- Hairdryer



B&B Per Person Per Night	US\$ RACK
Sharing	354
Single	504
Child sharing (4-11y)	176
Child single (4-11y)	254

Value Adds :

- Afternoon Tea served in the restaurant between 15h30-16h30 daily.
- Complimentary shuttle bus to Victoria Falls Town
- Minibar with complimentary initial stocking of 2 x beers, 2 x cokes, 2 x sugar free soft drinks, 1 x 187ml white wine, 1 x 187ml red wine and chocolates. Mineral water replenished twice daily.

Deluxe Suites - 2

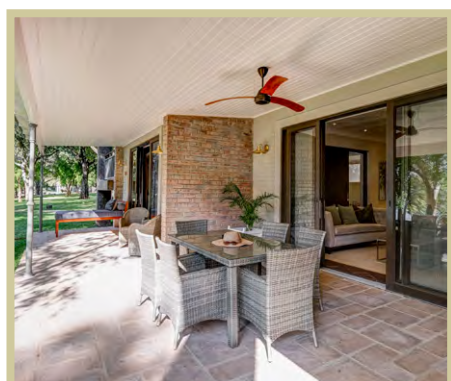
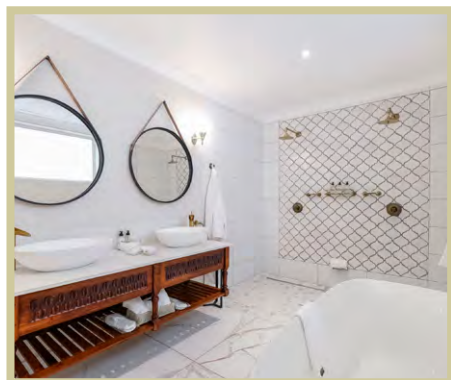
The Deluxe Suites are situated on ground level overlooking the tranquil waters of the Zambezi River, surrounded by lush green gardens.

The suites are perfect for families or couples travelling together and include spacious King and Twin rooms complete with en suite bathrooms, writing desks, complimentary Wi-Fi, satellite television, air conditioning, hairdryers, electronic safes, bedside reading lights, fully equipped tea & coffee stations and fully-stocked complimentary minibar.

Nestled between the two bedrooms is a comfortable and contemporary shared lounge and dining area leading out onto a large, private veranda offering tranquil spaces to relax, unwind and soak in the calming surrounds.

Amenities

- Interleading Lounge
- Private river-facing balcony
- Complimentary Wi-fi
- Tea & Coffee facilities
- Dining table & Seating
- Electronic safe
- Daily housekeeping
- International & USB charging points
- Water-efficient rainfall showers
- Air conditioning
- Ceiling fans
- Satellite Television
- Hairdryer
- Ensuite bathrooms with bathtubs



B&B Per Person Per Night	US\$ RACK
Sharing	410
Child sharing (4-11y) *Minimum 3 pax per suite	205

Value Adds :

- Fruit bowl and snacks on arrival (*mixed nuts, dried fruit, cheese biscuits, date balls*)
- Bath salts and bubble bath
- Afternoon Tea served in the restaurant between 15h30-16h30 daily.
- Complimentary shuttle bus to Victoria Falls Town
- Full complimentary minibar replenished daily. Including 1x 187ml red & 1x 187ml white wine, 1 x 50ml vodka, gin, whiskey & brandy, 4 x coke, coke zero, soda, ginger ale, lemonade, tonic water. Water replenished twice daily.

Honeymoon Suites - 2

The Honeymoon Suites are perfectly suited to celebrate recent nuptials, anniversaries and vow renewals – or just spend time reconnecting in idyllic luxury, surrounded by the magic and romance of Africa.

The Honeymoon Suite's stand-out features include a spacious balcony overlooking the Zambezi National Park and mighty Zambezi River, complete with contemporary décor including a romantic daybed and outdoor shower.

The rooms are spacious with luxurious wooden four-poster king-sized beds, writing desks and lounge chairs, while the ensuite bathrooms boast a luxurious gold bathtub, double shower and vanity, and separate toilet.

Amenities

- Private river-facing balcony
- Outdoor Shower
- Romantic Outdoor Daybed
- Complimentary Wi-fi
- Tea & Coffee facilities
- Electronic safe
- Daily housekeeping
- International & USB charging points
- Water-efficient rainfall showers
- Separate toilet
- Air conditioning
- Ceiling fan
- Satellite Television
- Hairdryer
- Bathtub

B&B Per Person Per Night	US\$ RACK
Sharing	524
Single	655

Value Adds :

- Fruit bowl and snacks on arrival (*mixed nuts, dried fruit, cheese biscuits, date balls*)
- Sparkling wine with bespoke card
- Bath salts and bubble bath
- Afternoon Tea served in the restaurant between 15h30-16h30 daily.
- Complimentary shuttle bus to Victoria Falls Town
- Romantic turndown for honeymooners
- Full complimentary minibar fridge replenished daily. Including 1x 187ml red & 1x 187ml white wine, 1 x 50ml vodka, gin, whiskey, brandy, 2 x coke, coke zero, soda water, ginger ale, lemonade & tonic water. Water replenished twice daily.



Executive Suites - 3

For extra privacy and luxury during your stay, the Executive Suites perfectly connect a large bedroom with a relaxing lounge and a peaceful balcony area overlooking the Zambezi River.

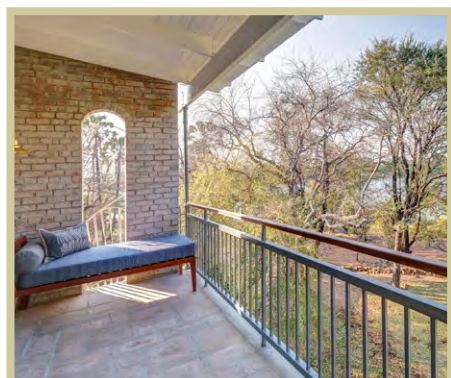
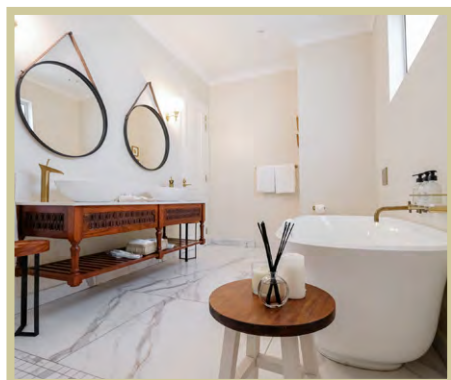
The spacious bedroom includes a king-sized bed, writing desk, complimentary Wi-Fi, satellite television, air conditioning, electronic safe, a fully equipped tea & coffee station and fully-stocked complimentary minibar.

The lounge and guest bathroom has been tastefully designed to incorporate the vast space, high ceilings and open-air setting.

The room is complemented by a river-facing balcony complete with a day bed in which to relax and soak in the peaceful natural surroundings.

Amenities

- Private Lounge
- Private river-facing balcony
- Ensuite bathroom with bathtub
- Guest bathroom
- Complimentary Wi-fi
- Tea & Coffee facilities
- Electronic safe
- Daily housekeeping
- International & USB charging points
- Water-efficient rainfall showers
- Air conditioning
- Ceiling fan
- Satellite Television
- Hairdryer



B&B Per Person Per Night	US\$ RACK
Sharing	587
Single	734

Value Adds :

- Fruit bowl and snacks on arrival (*mixed nuts, dried fruit, cheese biscuits, date balls*)
- Sparkling wine with bespoke card
- Bath salts and bubble bath
- Afternoon Tea served in the restaurant between 15h30-16h30 daily.
- Complimentary shuttle bus to Victoria Falls Town
- Full complimentary minibar fridge replenished daily. Including 1x 187ml red & 1x 187ml, 1 x 50ml vodka, gin, whiskey, brandy, 2 x coke, coke zero, soda water; ginger ale, lemonade & tonic water. Water replenished twice daily.

Presidential Suite - I

with private host/concierge

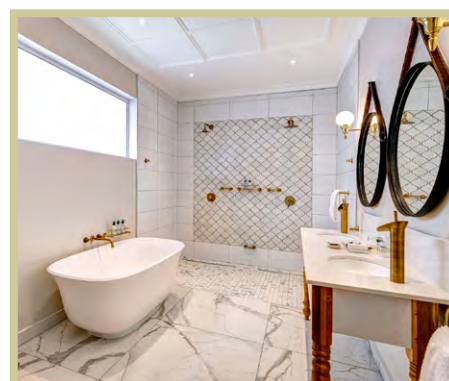
The grandest room in the collection is perfectly situated in a central location within the hotel offering unparalleled views of the Zambezi River.

The impressive suite features a super king-sized bed, private mini balcony, secluded wardrobe and changing areas. The beautiful bathroom boasts an encompassing bathtub, double vanity and double shower decorated with delicate brass features. Adjoined to the bedroom is a perfectly appointed lounge with luxurious finishes from the floor to ceiling.

The Presidential Suite also showcases a spacious balcony, perfectly poised to offer a front-row seat to the tranquil Zambezi River.

Amenities

- Private Lounge
- Private river-facing balcony
- Ensuite bathroom with bathtub
- Guest bathroom
- Complimentary Wi-fi
- Tea & Coffee facilities
- Electronic safe
- Daily housekeeping
- International & USB charging points
- Water-efficient rainfall showers
- Air conditioning
- Ceiling fan
- Satellite Television
- Hairdryer



B&B Per Person Per Night	US\$ RACK
Sharing	735
Single	918

Value Adds :

- Private Host
- Complimentary 30 minute massage per person
- Complimentary Breakfast Cruise, with upgrade to private cruise if available
- Afternoon tea - in room option available
- Full Minibar Fridge : 2 x 750ml red & white wine, 1 x 750ml vodka, gin, whiskey, brandy, 4 x coke, coke zero, soda water, ginger ale, lemonade, tonic water
- Fruit bowl, chocolates and snacks on arrival (mixed nuts, dried fruit, cheese biscuits, date balls)
- Bespoke Card and sparkling wine on arrival
- Bath salts and bubble bath
- Complimentary Shuttle to Victoria Falls Town



The Palm River Villa - I

with private host/concierge

Offering the pinnacle of private residing at the Palm River Hotel is the exclusive Palm River Villa. Made up of an Executive Suite with ensuite bathroom, private lounge and guest bathroom, a Honeymoon Suite with ensuite bathroom attached to main lounge and kitchen area and a twin Deluxe Room with ensuite bathroom.

The Palm River Villa is complete with a kitchen, dining area, spacious lounge, car park, private swimming pool with an expansive patio and garden; shared only with free-roaming wildlife that frequent the lush lawns. The villa allows for families or small travel groups to have their own exclusive space, while immersed in the riverside location of the Palm River Hotel.

Amenities

- Private Kitchen
- Spacious ground floor veranda
- Private swimming pool
- Complimentary Wi-fi
- Tea & Coffee facilities
- Electronic safe
- Daily housekeeping
- International & USB charging points
- Water-efficient rainfall showers
- Air conditioning
- Ceiling fan
- Satellite Television
- Hairdryer



Exclusive-use of Villa (includes all 3 rooms)	US\$ RACK
Bed & Breakfast	3,082
Dinner, Bed & Breakfast	3,485

Value Adds :

- Private Villa Host
- Continental Breakfast included in room: fruit, yoghurt, cereals, bread, condiments, muffins, etc.
- Afternoon tea - served in Villa
- Complimentary River Cruise, with upgrade to private cruise if available
- Full Minibar Fridge : 2 x 750ml red & white wine, 1 x 750ml vodka, gin, whiskey, brandy, 4 x coke, coke zero, soda water, ginger ale, lemonade, tonic water
- Fruit bowl, chocolates and snacks on arrival (mixed nuts, dried fruit, cheese biscuits, date balls)
- Bespoke Card and sparkling wine on arrival
- Bath salts and bubble bath
- Private Shuttle to Victoria Falls Town

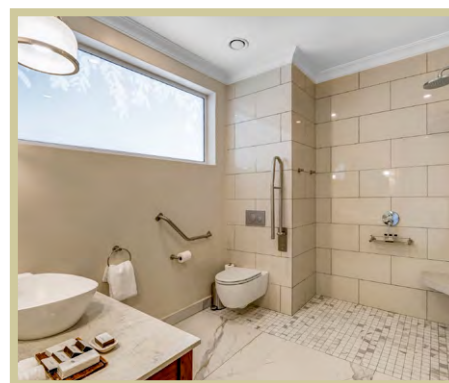
Accessible Accommodation

No single supplement for carers/companions

The Palm River Hotel offers two fully-serviced wheelchair accessible rooms, both inter-leading Deluxe Rooms, on the ground floor closest to the Main Area. The rooms are equipped with multiple handrails, carefully positioned to assist with mobility inside the room and bathroom, and furnished with beds and chairs of optimum height for disabled access. Alarms and phones are fitted with light and sound alerts.



Additional Offerings	US\$ NETT
Accessible Deluxe Room and Interleading Deluxe	354
Carer or companion (no single supplement)	354
Tour leader, guide or pilot	173



2 Night Value Add

Valid during Low Season Periods

(1st January - 31st March / 1st November - 20th December)

Book 2 nights on a B&B basis in any room type plus a River Cruise and guests will receive a free 3-course dinner in the Palm River Hotel Restaurant.

NOTE :

Valid per person per 2 night consecutive booking

Valid for bookings on any room type

Dinner excludes drinks

Not applicable to group bookings - FIT only - maximum 6 guests per booking



3 Night Value Add

Valid during 1st January - 20th December

Book 3 consecutive nights stay per person (up to max 6 pax) and guests will receive:

- A complimentary 3-course dinner at The Palm River Hotel (excludes drinks)
- A complimentary 3-course dinner, at The Cassia Restaurant (at Ilala Lodge Hotel) with return transfers (excludes drinks)

NOTE :

All Value Adds are subject to availability

Not applicable to group bookings - FIT only - maximum 6 guests per booking

The Palm River Hotel reserves the right to amend the Value Add T&C's without notice



Amenities and Facilities

Complimentary Shuttle Bus

A complimentary shuttle bus runs on a schedule throughout the day, transporting guests between the Palm River Hotel and Victoria Falls Town centre. The shuttle stops at key landmarks for guests' convenience including the Victoria Falls Rainforest, Ilala Lodge Hotel and the various craft markets along the route.

Afternoon Tea

Daily from 3.30pm - 4:30pm enjoy a variety of sweet treats, teas and coffees with a view of the Zambezi River.

Complimentary for all in-house guests at The Palm River Hotel.

Tours Desk

With so much to see and do in the Victoria Falls and surrounding area, the tours and activities desk offers an invaluable information asset to help guests plan their stay and book activities inhouse.

Spa

Unwind and relax, in the hotel's luxurious spa, with tranquil views of the Zambezi River. The spa's offerings include a variety of aromatherapy treatments inspired by the natural surrounds, soothing massages and beauty treatments such as manicures and pedicures.

On-site Gymnasium

The spacious gym offers a fresh and airy place in which to maintain wellness goals, while surrounded by natural bushveld. Equipment options include a 3-station multi-gym weights machine, an elliptical trainer, stationary bikes, rowing machines, yoga equipment, free weights and more. The gym is positioned next to the hotel entrance offering views of the natural surroundings and the hotel's Victoria Falls bridge replica entrance feature.

Curio shop

Discover a diverse in-house gift shop located near reception, complete with a colourful array of gift items. From locally designed garments to elevate guest wardrobes, to luxurious hand-crafted silverware, and recycled aluminium bowls and servers, all locally sourced. Our shop products have been carefully sourced to fit perfectly into luggage to ensure guests can take home as a memorable token of their time in Victoria Falls.



Dining

Palm River Hotel Restaurant

Enjoy a fusion fare within the hotel's grand dining hall, encompassed by tall ceilings, classic parquet flooring and large sliding doors that open out onto an idyllic riverfront vista. The dining hall flows onto a veranda space and onto an al fresco dining area, sheltered by tall ceilings that merge with the canopy of trees.

Outdoor Bar

Set under a canopy of trees in the main area, the outdoor bar serves a selection of local and imported beverages, wines, cocktails, speciality coffees and fresh fruit juices, available daily from 10 am to 10 pm.

Riverside Dining Experience

The Riverside Dining Experience offers authentic African-style barbeque dining within an unparalleled setting on the edge of the Zambezi River. The diverse menu includes traditional Zimbabwean specialities, fresh salads and flavour-filled side options. The experience also includes return transfers to Ilala Lodge and a welcome drink. Available throughout the year at the Palm River Hotel, weather permitting. Cash bar available.

Group Riverside Barbeque Dinner

Experience a unique group African-style barbeque on the banks of the Zambezi River, under a starlit African Sky. Includes 3-course barbeque dinner, traditional entertainment, one bottle of water and one glass of red or white wine, beer or soft drink per person with a cash bar available. Located at the Riverside Venue neighbouring Palm River Hotel.

Requires a minimum of 12 guests.

The Cassia Restaurant at Ilala Lodge Hotel

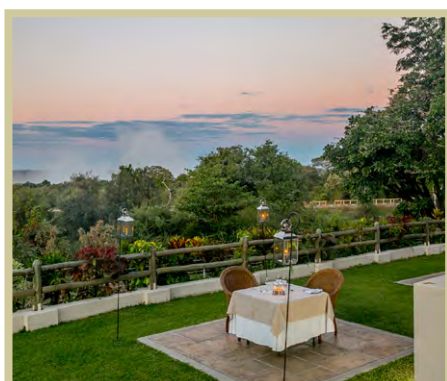
Experience gourmet dining at the top-rated Cassia Restaurant. Centrally located only minutes away from the Victoria Falls at Ilala Lodge Hotel. The calming and tranquil ambience of the restaurant is further complimented by the gentle rumble of Victoria Falls in the background.

Includes a 3-course à la carte dinner with return transfers for Palm River Hotel guests.

Per Person	US\$ NETT
A la Carte Dinner	44
Riverside Dining Experience	47
Group Riverside Barbeque Dinner Requires a minimum of 12 guests.	50
The Cassia Restaurant (includes complimentary return transfers to Palm River Hotel)	42

Dining rates exclude drinks unless otherwise stated

Please refer to our Transfers Rates sheet for return hotel transfers for guests not staying at either the Palm River Hotel or Ilala Lodge Hotel.



Luxury River Cruises

Relaxing river ventures include Breakfast, Birdwatching, Lunch and Sunset Cruises on the Zambezi River. Choose from the renowned mobohull Ra-Ikane River Cruises or the opulent twin-deck River Odyssey.

- Cruises launch from site located next to Palm River Hotel
- Breakfast/Birdwatching Cruises include return hotel transfers within Victoria Falls town, continental breakfast, Tea, coffee and river usage fees
- Lunch Cruises include return hotel transfers within Victoria Falls town, beverages (local and imported), light 2 course meal, and river usage fees
- Sunset Cruises include return hotel transfers within Victoria Falls Town, beverages (local and imported), snacks and river usage fees

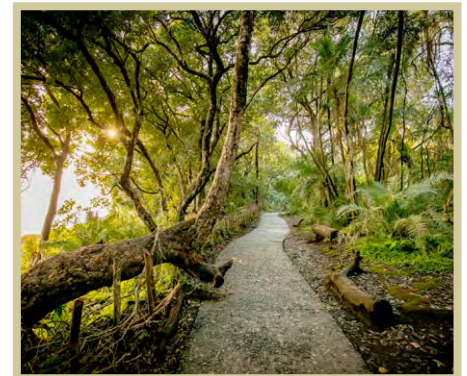
Ra-ikane and River Odyssey Cruise Rates (per person)	US\$ RACK
Breakfast, Birdwatching or Lunch Cruise	85
Sunset Cruise	94

Subject to availability. Private boat hire available on request



Transfers & Tours

Per Person (min 2 pax)	US\$ RACK
Victoria Falls Town to Victoria Falls Airport	18
Private Victoria Falls Airport transfers (min 4 pax)	18
Victoria Falls inter-hotel return transfer	9
Victoria Falls Town to Livingstone Town, Zambia	40
Victoria Falls Town to Kasane Town, Botswana	68
Victoria Falls Town to Hwange Main Gate (min 4 pax)	71
Guided Tour of the Victoria Falls Rainforest (excluding National Parks Rainforest Entrance Fees)	25



Victoria Falls Rainforest Entrance Fees

Per Person per entrance	US\$
International	50
SADC	30
Zimbabwean	7

All rates are subject to third party changes.



Booking Policy

- Check in: 14:00 hrs
- Check out: 11:00 hrs
- Rooms will be held until 18:00 hrs. After which, rooms will automatically be released unless hotel is informed of late arrivals
- Guests are required to present proof of payment where relevant upon arrival. This can be in printed or digital format.
- Additional request or extras must be paid for direct at checkout.
- The hotel will invoice at the negotiated nett rate, inclusive of 15% VAT and 2% Government Tourism Levy.
- Children's rate has been indicated on the rates sheets
- Children under the age of 4 will be accommodated free of charge when sharing a room with their parents or other paying guests.
- Group Booking Policy: Book 16 pax and the 17th pax receives complimentary accommodation on a B&B basis
- The hotel reserves the right to amend the above rates in-line with any government statutory increases

FIT Cancellation Policy

- A 20% non-refundable deposit must be made within 30 days from the date of placing the booking
- The balance must be made on or before 60 days prior to travel date
- If the booking is made within 60 days of travel full payment is required

Cancellation Fees

- Bookings made within 30 days or less of arrival – 100% cancellation fee
- 60 – 30 days – 50% cancellation fee
- More than 60 days – 20% non-refundable deposit retained
- The above percentages are based on the total value of the amount shown on invoice

Groups Cancellation Policy

- Applicable to groups of 16 or more paying guests
- A 20% non-refundable deposit must be made within 30 days from the date of placing the booking
- The balance must be made on or before 60 days prior to travel date
- If the booking is made within 60 days of travel full payment is required

Cancellation Fees

- Bookings made within 30 days or less of arrival – 100% cancellation fee
- 60 – 30 days – 50% cancellation fee
- More than 60 days – 20% non-refundable deposit retained
- The above percentages are based on the total value of the amount shown on invoice

