

SIMALAHA HORSE SAFARIS

Accessible from Livingstone, Zambia



*Return to the Wild.
Wild. Sustainable. Unforgettable.*



welcome

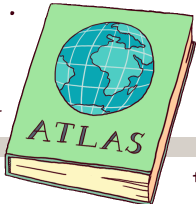


We welcome all horse-lovers - those searching for something different - something authentic, somewhere you leave only a (hoof)print behind. Where your visit contributes to the greater good of wildlife and people.

Simalaha Horse Safaris is the first tourism operator in the Simalaha Conservancy! We contribute to the Community Trust in order to empower and support community initiatives to move out of poverty and to develop a love and ownership of their wildlife - the dream of Chief Nyambo Yeta finally being realised.

A stay at Simalaha Horse Safaris allows visitors the opportunity to experience and appreciate the magnificent beauty of the Zambian wilderness on horseback, exploring ancient lands, witnessing and meeting local peoples and observing wildlife in a safe environment. We look forward to sharing this special place with you!

Doug & Gail

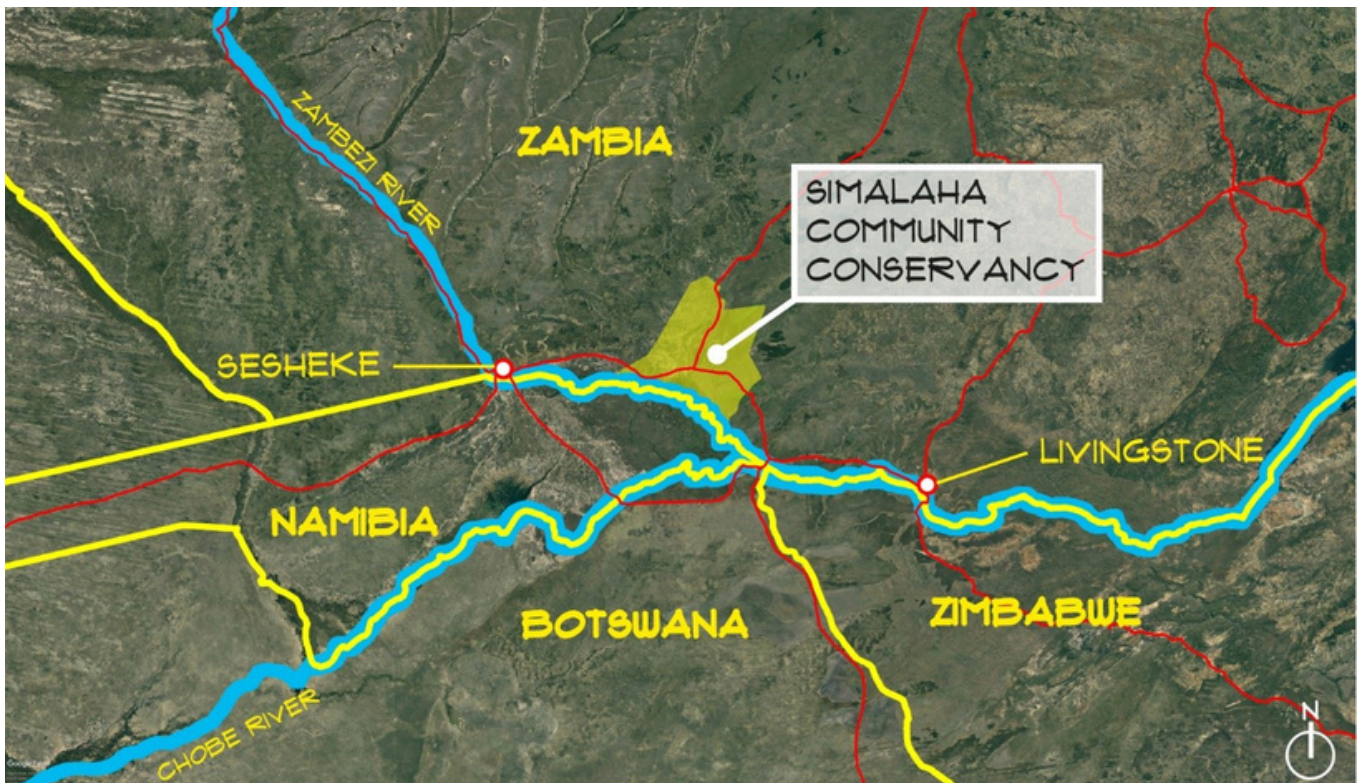


Where in the world is Simalaha Horse Safaris?

Pinpoint Zambia in your atlas, fly into Livingstone International Airport, hop in a car, jump in a speedboat & look out for your horses ready to ride you into camp!

A really wild adventure!

We are located in the heart of the Simalaha Community Conservancy - specifically the Kavango Zambezi (KAZA) Transfrontier Conservation Area. KAZA is situated in the Okavango and Zambezi river basins where the borders of Angola, Botswana, Namibia, Zambia and Zimbabwe converge.



Visitors may combine their horse safari with a stay at our sister property - Chundukwa River Lodge, a beautiful owner-run boutique lodge located on a horse ranch just 25kms from Livingstone and the mighty Victoria Falls.

HOW WE FIT INTO A ZAMBIAN SAFARI CIRCUIT

- Pre-Safari : Kick off your Zambian adventure in Livingstone, where clients have ease of flight access from multiple destinations. Use Chundukwa River Lodge as your base to ease into your safari and find your "bush eyes" on the Zambezi River.
- Post Safari : We are the ideal post-safari destination as guests tend to be quite tired and want to relax, go off for one or two adventures in a day and then relax by the pool or put their feet up and read by the River.
- OR use Chundukwa as a base to do various 'day safaris' in Zambia, Zimbabwe & Botswana.

Getting to Camp is where the adventure begins!



Road → River → Ride!

TRANSFER TIME TO SIMALAHA HORSE SAFARIS

*Livingstone Airport to Chundukwa River Lodge
Approx. 25 mins*

*Chundukwa River Lodge to Simalaha Horse Safaris
Approx 1h40*

Guests may be transferred by road and river or flown into the Simalaha Conservancy by helicopter or fixed wing plan at additional cost.

THE SIMALAHA EXPERIENCE

What is significant about our horse safaris is the story behind the place, the land, the people, its cultural history and relevance to sustainable community and wildlife development.

The first of its kind in Zambia, our equestrian safari in the beautiful Simalaha Conservancy is an experience like no other! Hosted by renowned horseman, Doug Evans - and with riding access to the whole Conservancy, from vast open plains to mopane and acacia woodlands, there is plenty of varied terrain and wildlife to make rides interesting and fun.

“Horse Safaris are my personal addiction and I have ridden all over Africa with many horse safari companies where I have taken clients. I would highly recommend Simalaha as an excellent horse safari to go on. Some of the best schooled horses I have ever ridden, great accommodation, food and hospitality, not forgetting a fabulous horse safari. I can't wait to go back!”

Daphne Lyndsay - Managing Director, Zamag Tours & Safaris



- A truly boutique experience – the camp takes a maximum of 8 people in four tents only, ensuring the rare opportunity for clients to go **off-the-grid** and immerse themselves in the experience.
- A sustainable / **responsible tourism** option; employing environmentally friendly practices; protecting cultural and natural heritage; and providing tangible social and economic benefits for local communities.
- We offer a **simple rate structure**, starting with a 3-night package or longer, on a full-board basis, including return transfers between Livingstone and Simalaha Conservancy by road.
- Simalaha Horse Safaris allows a provision of 2 horses for each rider, plus saddles and all tack with approximately 6-7 hours of riding per day, dependent on client preference.

There are no large predators in the conservancy and so Simalaha Horse Safaris is considered a safe riding & wilderness combination!

- Wildebeest
- Zebra
- Red Lechwe
- Puku
- Hartebeest
- Impala
- Waterbuck
- Giraffe
- Buffalo
- Eland
- Sable
- Reedbuck
- Duiker
- Vervet Monkeys
- Side-striped Jackal
- Hippos
- Nile Crocodiles



Wildlife Checklist



Simalaha has 16 large mammal species which can be seen on the plains and in the surrounding mopane forest and it is not unusual to see hundreds of wildebeest, zebra and lechwe grazing in harmony with the local tribesman's cattle making this a truly unique horse safari experience.



What's the plural name for Giraffe?



*Simalaha Horse Safari Season runs from 1 June – 31 January.
We close during the Rainy Season due to flooding in the Simalaha flats!*

OUR HORSES OUR FAMILY



Our horses are our family. Living remotely has required a firm ability in animal husbandry and horse care. Doug having schooled horses for Polo and Polo Crosse over the years has given him an edge of knowing what types of horses will offer experienced riders a satisfying experience. Our horses are selected for their hardiness and responsiveness. All have endearing qualities and gentle natures.

We have a mixture of Quarter Horses, Quarter Horse cross Boerperds, Basotho Horses and Thoroughbred-Crosses. The horses run as a herd in the Simalaha Conservancy and are brought in for grooming, feeding and rides.

Most of these horses arrive 'green' and are gentled by Doug personally. When asking him how he schools a horse, he will say, "you never want to force a horse to do anything, you want to be able to ask it"... Once Doug is confident that they are schooled well enough they are ridden on the plains by our horse wranglers Mukela and Thomas where they are introduced to the bush and Wildlife. All our horses are forward going and steady.

MEET A FEW MEMBERS
OF OUR HERD!



*Maggie May (left) Mare, 16 hands
Quarter Horse cross Clydesdale
She is a delightful strong-weight carrying mare and
a dream to ride. Maggie May is Matriarch of the herd.*



*Bossman aka "Bossie", Gelding, 15 hands
Registered Quarter Horse
Very loving but a solid strong ride.*



*Baloo, 15 hands
Gelding-Boerperd
A true gentleman, forward going and anyone can ride him,
from age 6 to 75!*



*Freckles aka Swamp Donkey (right)
Gelding, 14.3 hands
Steady as a rock and built like a tank.*

SIMALAHA HORSE SAFARIS USE A MIXTURE OF SADDLES – AMERICAN SADDLES AND SOUTH AFRICAN TRAILING SADDLES. EACH GUEST GETS TWO SADDLE BAGS TO CARRY PLUS THEIR PERSONAL WATER BOTTLES.



*Cassidy, Mare, 15,1 hands
Boerperd
Amazing mare and very forward going!*



*Regent, Mare, 14.2 hands
Quarter horse. She is Maggie Mays' side-kick.
Forward going and lovely to ride.*



*Soho, Gelding 15,2 hands
Basotho Horse
Soho is the gentleman who loves people and will do anything you ask of him. He is fearless, forward going and has taught many kids to ride, plays Polo Crosse and loves the bush.*



Freckles, always has to wind everyone up at parties!

MEET YOUR HOSTS!

Doug & Gail



Gail Kleinschmidt



Doug Evans

Your hosts at Simalaha Horse Safaris are Doug & Gail, conservationists who have been exploring, observing, and championing wild places in Zambia for over 40 years. As owners of Chundukwa River Lodge and Simalaha Horse Safaris, Doug and Gail are preserving and protecting the ecosystems they care so deeply about in order to ensure the natural habitats in their care thrive, while the communities who rely on them are supported.

On a horse since the age of two, and involved with breeding, schooling, trail riding and training Zambia's national Polo-crosse team, Doug Evans' dream of leading horse-lovers on multi-day rides in a remote wilderness has come true in Simalaha. Doug has two passions in life – the bush and horses, and Simalaha Horse Safaris combines both.

Doug has worked in conservation, eco-tourism and with horses all his life, which has included training horses to work in wildlife areas for anti-poaching patrol work. Some people say Doug is a bit of a 'horse whisperer'. He doesn't agree but does have a deep connection with horses. He treats his horses calmly and with respect. In return they trust him.

His empathy extends to the local people; speaking their language, understanding their traditions and explaining tribal culture to visitors to create a more immersive African experience. Visiting and meeting community members either in their homes, at school or in the field, or partaking in their magnificent tribal dancing – are all experiential opportunities over and above the horse safari.

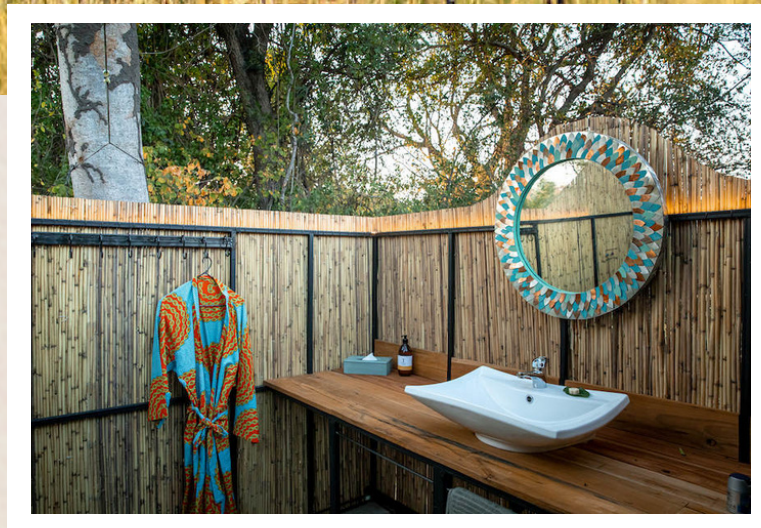


*Let's show you around our
billion star camp!*





4^x ENSUITE STILTED TENTS



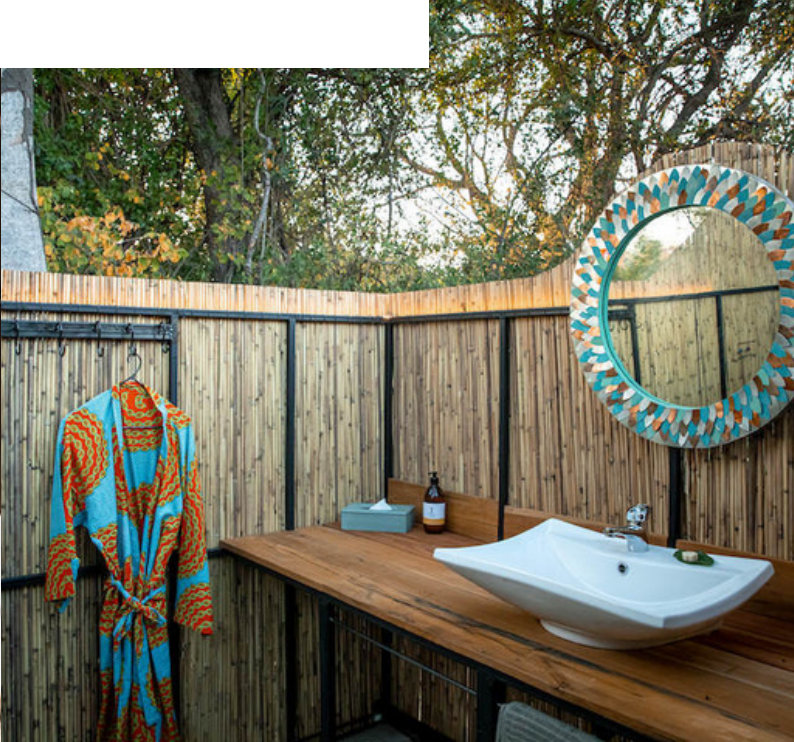
VAST OPEN SPACES, STARLIT SKIES & THE SING-SONG OF NATURE AT DAWN, OUR CAMP OFFERS A SAFE, WILDERNESS EXPERIENCE WITH BREATH-TAKING VIEWS OVER THE SIMALAHA PLAINS.

Our horse riding safari camp accommodates a maximum of 8 people in four tents. Each tent is raised above the ground with views over the endless grassy plains. Our tents all feature ensuite open air bathrooms, and seating on the front deck. We have taken special care to provide good quality mattresses, linen and towels to ease those achy bodies after long hours in the saddle.

Water and electricity are all generated by solar power making this a perfectly sustainable and eco-friendly camp. USB port chargers are available on your reading lights and additional charging facilities are located in the camp lounge and dining area.



ENSUITE LUXURY TENTS





FOOD, FACILITIES & LIFE AT CAMP

Our horse riding safari camp is designed to get the best out of outdoor living – whether it’s dining under the stars, resting under a shady tree in the heat of the day, or cooling off in our plunge pool at the edge of the plain. We love an outdoor life and have designed every part of your stay to get the best of an outdoor experience. There is a shady elevated lounge and dining area, with a 270° view of the plains. We also have a separate shaded lounge providing different areas for chilling out.

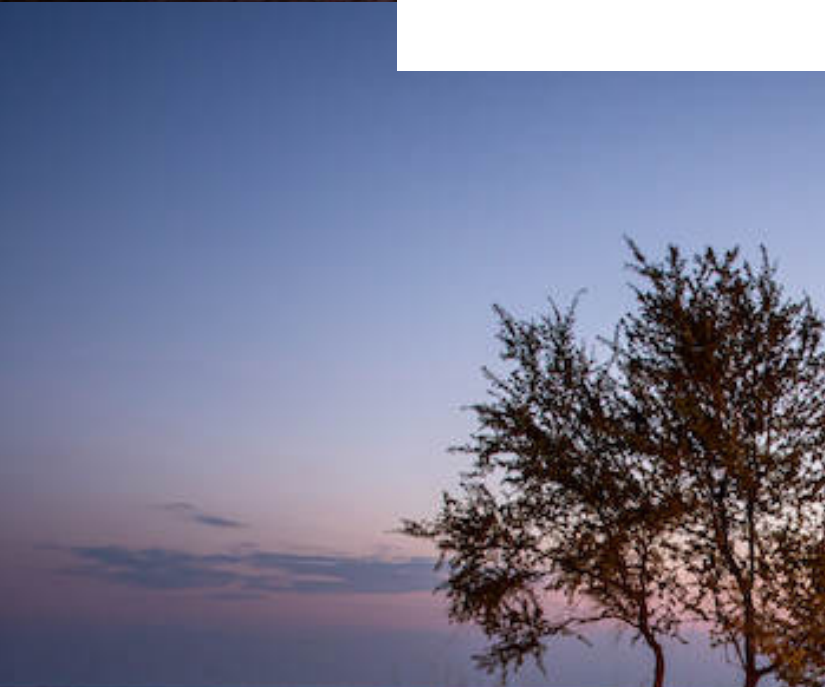
THERE ARE VERY FEW ROADS IN THE SIMALAHA CONSERVANCY AND THE LOCAL PEOPLE USE OXEN TO CARRY THEIR GOODS, AND SO DO WE. PICNICS AND SUNDOWNERS ARE GRACEFULLY DELIVERED BY OUR BELOVED OXEN, ROMULUS AND REMUS.



Our bush kitchen is built into a container – and the creations and sustenance coming out of there seem never-ending! We cater for your dietary requirements, though do let us know in advance so we can be sure to source all the correct ingredients.



SIMALAHA CAMP



RATES & PACKAGES

Close to Victoria Falls, Simalaha Horse Safaris offers different horse riding packages, with the choice to combine a riding holiday with visiting Victoria Falls and staying at Chundukwa River Lodge which is also owned by Doug & Gail.

All of our Simalaha packages include:

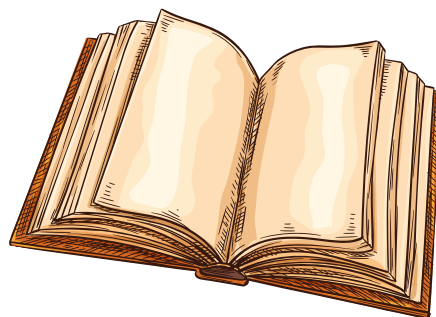
- 6-7 hours of riding per day while at Simalaha
- Provision of 2 horses for each rider, plus saddles and all tack
- Accommodation in very comfortable bespoke safari tents with ensuite bathrooms
- All meals, tea & coffee
- House wine, beer and soft drinks
- Return transfers between Livingstone and Simalaha Conservancy by road
- Vat, Tourism Levy & Service Charge

TAKE A LOOK AT OUR 3, 5 OR 7
NIGHT ITINERARY ON OUR WEBISTE
OR CHAT TO US ABOUT A BESPOKE
ITINERARY THAT SUITS YOU!

SHOW ME NOW!

1. To join a safari, guests need to be competent riders and will be asked to fill in a questionnaire relating to their riding experience.
2. Children need to be 12 years and older.
3. There is a minimum booking number of 2, and we can accommodate a maximum of 8 clients.
4. The season runs from 1 June – 31 January.
5. Helicopter and fixed wing transfers can be arranged, please enquire for a quote.
6. For other inclusions/exclusions please enquire.

A PEEK INSIDE OUR GUESTBOOK!



“I approached my first horse safari with a little trepidation at the prospect of 6 hours a day in the saddle and 4 nights in a tent. In fact our stay at Simalaha surpassed all expectations. On arrival the setting of the camp, overlooking a vast expanse of golden flood plain, quite blows you away. Nestled amongst the trees are 4 luxury tents with outside en suite, king size beds, crisp cotton bed linen and discreet solar lamps complete with USB sockets. Every detail is eco-friendly to blend with this unique, unspoiled wildlife conservancy. The main dining area under the stars with its stunning views is furnished for comfort with bright cushions and plenty of throws for the chilly nights where the campfire blazes as we exchange our stories of the day.

Each horse has a personality but they are all perfectly trained and paired to individual riders for safety and comfort as we explore the flood plain in search of wildebeest and zebra both of which are plentiful. We ride amongst waterbuck, red lechwe and hartebeest as they graze across the plain and marvel at the elegance of the giraffe looking down at us through the acacia trees.

Four hours in the saddle is broken by a welcome coffee and home-made biscuits, we then continue our safari before heading home for showers and lunch. The food, prepared freshly on site, is exceptional and the service faultless. A welcome siesta is followed by tea and delicious cake before we set out for a shorter ride as the colours deepen under the late afternoon sun. Stopping for sundowners amongst the trees the sunset is breathtaking. Whilst the daily pattern is repeated somehow each ride is different providing an ever changing landscape rich in colour and wildlife. An unforgettable experience.

Thank you Doug, Gail and the Simalaha Team!”

November 2020

What is significant about our horse safaris is the story behind the place, the land, the people, its cultural history and relevance to sustainable community and wildlife development.



TOURISM IN THE SIMALAHA COMMUNITY CONSERVANCY

The Simalaha Community Conservancy recognizes that income from nature-based economies is a critical component of the Conservancy. **Simalaha Horse Safaris Zambia is the first tourism operator in the Conservancy.** The Conservancy benefits from concession fees which form part of the bednight cost, as well as the training and employment of local members in the construction and running of the tented camp.

SIMALAHA HORSE SAFARIS ANIMAL HUSBANDRY & DONKEY WELFARE PROJECT



Apart from Simalaha Horse Safaris' contribution to the area through tourism, Simalaha Horse Safaris and Chundukwa River Lodge are looking to raise funds to support the working donkeys in the Simalaha with the long-term hope of setting up a centre for animal husbandry.



JOINING HANDS FOR CONSERVATION,
COMMUNITY & COMMERCE TO MAKE A
LASTING, SUSTAINABLE DIFFERENCE TO
SIMAHALA'S COMMUNITY AND WILDLIFE.

Visiting and meeting community members either in their homes, at school or in the field, or partaking in their magnificent tribal dancing – are all experiential opportunities over and above the horse safari.





THE SIMALAHA COMMUNITY CONSERVANCY

The Simalaha Community Conservancy forms part of the Kavango Zambezi Trans frontier Conservation Area (KAZA TFCA). The expansive KAZA TFCA is the world's largest TFCA covering approximately 520,000 square kilometres across 5 countries – Angola, Botswana, Namibia, Zambia, and Zimbabwe.

KAZA TFCA connects 36 protected areas, which include a host of game reserves, forest reserves, game management areas, communal lands and conservation and tourism concession areas designated for use of natural resources.

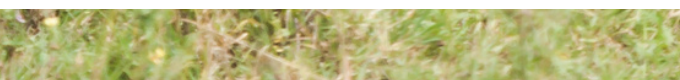
The formulation of this Conservancy is inspired and driven by visionaries – Chief Inyambo Yeta of the Sesheke Chiefdom and Chief Sekute of the Sekute Chiefdom. In 2012, the senior leadership of these two chiefdoms agreed that their land be developed as a wildlife conservancy, to allow for **conservation** of the area and viable **natural resource management**, but also promote income generation through nature-based economies and tourism opportunities. Partnering with Peace Parks Foundation, this vision has become a reality.

RE-ESTABLISHING THE WILDLIFE POPULATION

Wildebeest, zebra, red lechwe, puku, hartebeest, impala, waterbuck, giraffe, buffalo, eland and sable have been re-introduced to the plains.

The 'old days', when the Simalaha flood plains were teeming with wildlife, the forests thick and the people benefiting from this rich environment, are once more being realised. Each step towards this end is carefully worked through by the Simalaha Community Conservancy Trust and Peace Parks, sensitising and supporting the local communities to embrace such changes.

The Conservancy is fundamental to re-establishing wildlife populations and their migration routes in the Kavango Zambezi Transfrontier Conservation Area.



SIMALAHA HORSE SAFARIS

Stay in touch!

E: reservations@chundukwa.com

T: +26 (0)96 738 6407

Skype: chundukwa



www.simalahahorsesafaris.com