

WHITE  PEARL™

THE PEARL OF THE INDIAN OCEAN



FACT SHEET

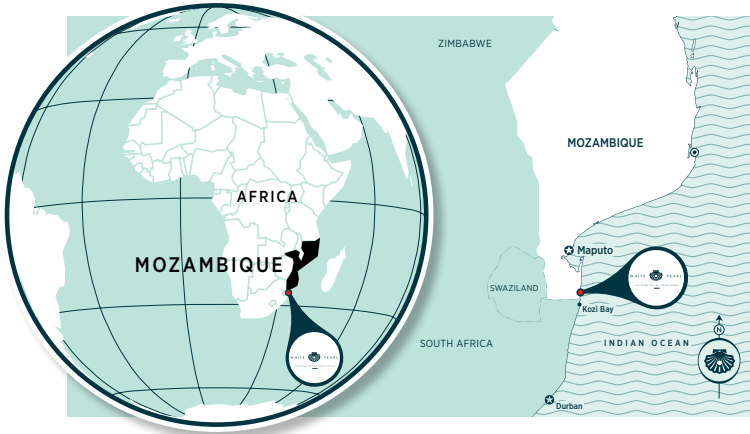
A tranquil blue ocean with an endless untouched beach, decorated with enchanting bush surroundings...

THIS IS THE AUTHENTIC BEAUTY OF MOZAMBIQUE

THE WHITE PEARL EXPERIENCE

White Pearl offers discerning guests a truly unique and unforgettable vacation experience. We go beyond what is expected, strive for absolute excellence and are passionate about providing five-star luxury and service from check-in to check-out and between.

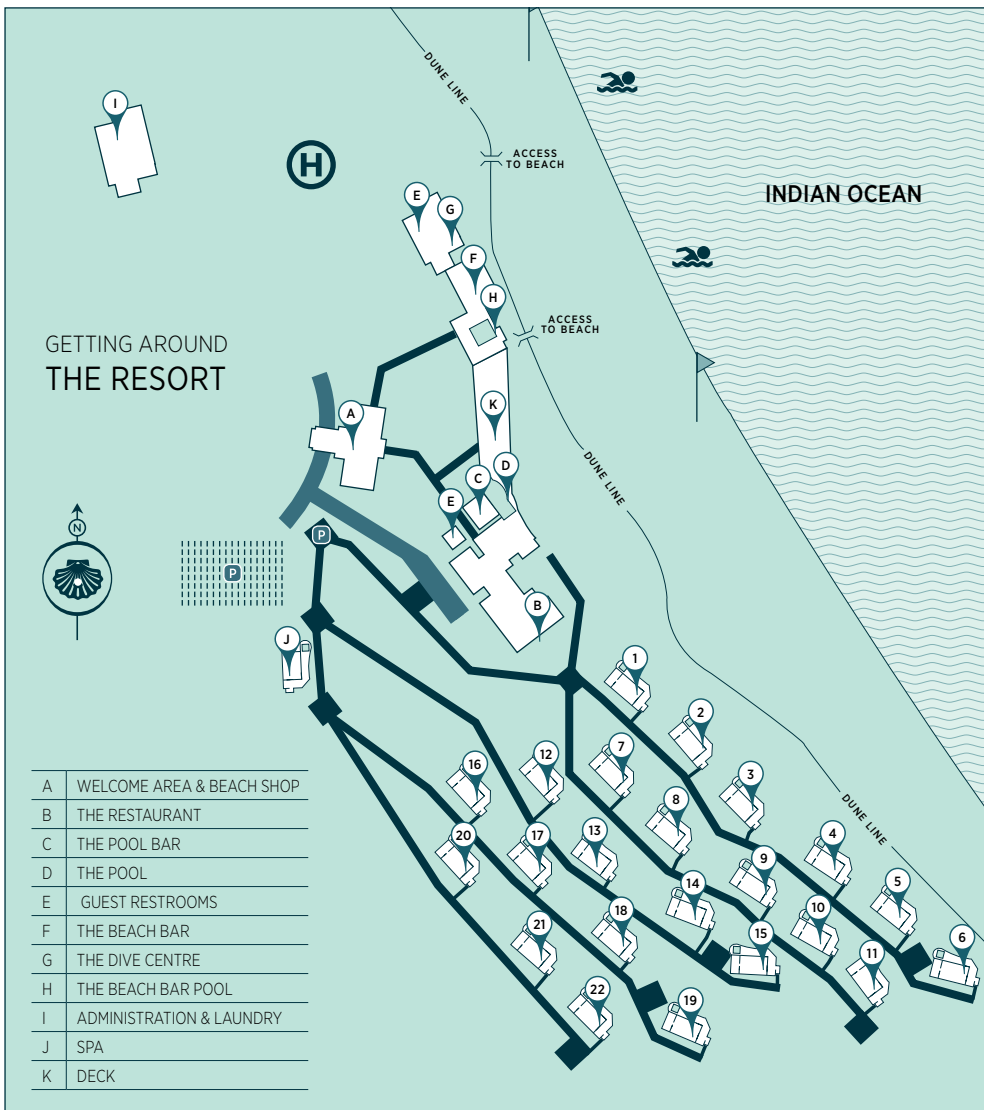
Delight in the natural beauty surrounding the Resort, from the Indian Ocean to the East to the Maputo Elephant Reserve to the West. Experience a place so beautiful and so pure, quite unlike any other in all of Mozambique...



LOCATION

White Pearl Resorts is situated at Ponta Mamoli on the south east coast of Mozambique, about 80km south of the country's stately capital city, Maputo, and 25km north of the Kosi Bay/South Africa border. Nestled in a cool, sheltered bay on Mozambique's lagoon coast, the Resort boasts sublime ocean frontage with over 2km of tranquil beach surrounded by tracts of indigenous bush.

Warmed by the Indian Ocean current moving south from the equator, the country's clear waters and subtropical climate provides travellers with an enticing welcoming beachside escape.



GPS COORDINATES:
S 26° 42' 30.78" E 32° 54' 03"

GETTING THERE

WEATHER

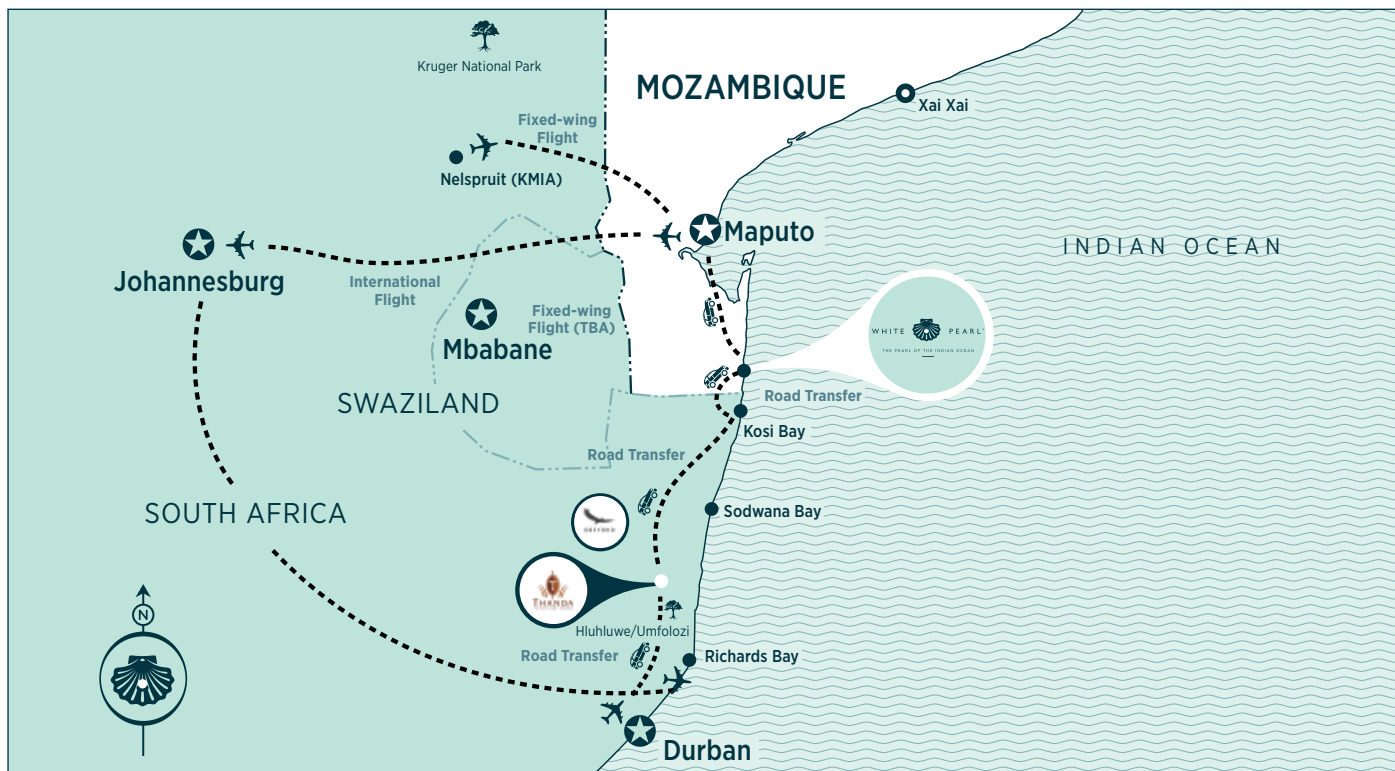
Mozambique enjoys a tropical climate, with plenty of sunshine throughout the year. The average temperature is around 28°C and the weather along the coast is sunny and warm, even in mid-Winter. The country has two seasons; a wet season (from October to March) and a dry season (from April to September) – with very little variation in temperatures between the two.

MALARIA

Due to its more southern location, White Pearl Resorts, Ponta Mamoli is situated in a low risk malaria area. Nevertheless, please consult with your medical practitioner for any advice on any other precautions.

GETTING THERE

ACCESS TO WHITE PEARL RESORTS



TRAVEL REQUIREMENTS

It is the responsibility of the guest, not the Resort, to ensure that all international travel requirements are met upon travelling to the resort.

Passports, visas and documentation should be available for presentation throughout travel, arrival and departure.

Please ensure that you have your passports and travel documents stamped at both border controls and returned directly to you.

Tourism visas for all nationalities can be obtained at all major ports of entry (applicable to White Pearl Resorts: Kosi Bay, Maputo International Airport, Komatipoort).

It is essential that guests have on hand proof that they are tourists with proof of accommodation and departure ticket. The Resort will provide guests with proof of accommodation for this purpose. Visas are obtainable on arrival.

Please ensure that you are familiar with the requirements pertaining to border visa payment and documentation prior to arrival. Visa rules are subject to change as per government discretion and we recommend that guests confirm with their local embassy on when and where to obtain visas prior to arrival.

We recommend that guests take out comprehensive travel insurance, as White Pearl Resorts will not be held liable for any refunds or payment for alternative accommodation or flights due to inclement weather conditions or any other causes out of our control.



DOCUMENTS REQUIRED:

When taking your vehicle across the border, you are required to have the necessary documentation with you. [CLICK HERE](#) for more information.

If you are travelling with children and crossing the border, immigration regulations require necessary documentation to be presented. [CLICK HERE](#) for more information.

All transfers need to be booked and paid a minimum of 7 days prior to arrival. Transfer schedules and travelling times are subject to weather and road conditions.

We recommend that guests take out travel insurance, as White Pearl Resorts will not be held liable for inclement weather conditions.

IMPORTANT NOTICE

All transfer schedules and travelling times are subject to weather and road conditions. White Pearl Resorts reserves the right to amend transfer methods if the booked transfers are not available due to unforeseen circumstances; where necessary, the resort will provide guests with a refund equivalent to the nett of the original transfer booked and the amended transfer. We recommend that guests take out comprehensive travel insurance, as White Pearl Resorts will not be held liable for any payment for alternative accommodation due to inclement weather conditions or any other causes out of our control.

ROAD TRANSFERS

4x4 TRANSFER – MAPUTO TO WHITE PEARL RESORTS	ROUTING	DEPARTURE & ARRIVAL TIMES
<ul style="list-style-type: none"> Road transfers are available from Maputo to White Pearl Resorts. The journey from Maputo to the resort takes ±90 minutes over the new Katembe Bridge and Road. Guests using this service can meet our representative at our White Pearl Resorts Airport kiosk at Maputo International Airport. 	Maputo International Airport to White Pearl Resorts (Min 2 pax)	Departs 11:30/15:30 Arrives 13:00/17:00
	White Pearl Resorts to Maputo International Airport (Min 2 pax)	Departs 11:00/13:30 Arrives 12:30/15:00
	Unscheduled transfers (Min 2 pax)	

Times are approximate, and unforeseen circumstances or events may delay journey time.

LUGGAGE: The allowance for luggage is **20kg per person**. A maximum of 5 guests per vehicle are allowed. Should guests be entering by means of the road transfer and wish to exit utilising the helicopter transfer, the **12 kg (soft bag)** per person luggage restriction will apply.

4x4 TRANSFER – KOSI BAY BORDER TO WHITE PEARL RESORTS	ROUTING	DEPARTURE & ARRIVAL TIMES
<ul style="list-style-type: none"> Road transfers are available from Kosi Bay to White Pearl Resorts. The journey from Kosi Bay Border to the resort takes ± 45 minutes. Secure parking at the border is available at approximately \$8 per vehicle per day (subject to change) on a cash-only basis. 	Kosi Bay Border to White Pearl Resorts (Min 2 pax)	Departs 10:00/15:00 Arrives 10:45/15:45
	White Pearl Resorts to Kosi Bay Border (Min 2 pax)	Departs 07:15/12:15 Arrives 08:00/13:00
	Unscheduled transfers (Min 2 pax)	

Times are approximate, and unforeseen circumstances or events may delay journey time.

LUGGAGE: The allowance for luggage is **20kg per person**. A maximum of 5 guests per vehicle are allowed.

SKY TRANSFERS

HELICOPTER TRANSFER	ROUTING	DEPARTURE & ARRIVAL TIMES
<ul style="list-style-type: none"> Charter helicopter transfer service is available from Maputo International Airport to White Pearl Resorts. The journey takes ±30 minutes. Enjoy a scenic flight over remote dunes, bush and beautiful coastal scenery as well as the Maputo Special Reserve en-route. Maximum capacity of 3 adults or 5 adults per helicopter. Advance bookings required. Subject to availability. 	Maputo International Airport to White Pearl Resorts (Max 5 pax)	UNSCHEDULED From Maputo International Airport: Earliest departure: 08h30 Latest departure: 15h30 From White Pearl Resorts: Earliest departure: 09h00 Latest departure: 16h00
	White Pearl Resorts to Maputo International Airport (Max 5 pax)	

The times are unscheduled as helicopter transfers are considered private charters and will be quoted and booked on request.

LUGGAGE: The allowance for luggage on the helicopter is a maximum of **12kg (soft bag)** per person.

Storage facilities for excess luggage are available at Maputo Airport no additional cost.

Excess luggage (max 20kg per person) will be transported to the resort by road on a scheduled transfer and a surcharge applies.

FIXED-WING TRANSFER	ROUTING	DEPARTURE & ARRIVAL TIMES
<ul style="list-style-type: none"> Fixed-wing transfer service from Kruger Mpumalanga International Airport to Maputo International Airport. The flight time is approximately 45 minutes. Followed by a ±90 minute road transfer from Maputo International Airport to White Pearl Resorts 	Kruger Mpumalanga International Airport (KMIA) to Maputo International Airport (Min 2 pax)	Departs 12:30
		Arrives 13:15

Times are approximate, and unforeseen circumstances or events may delay journey time.

LUGGAGE: The allowance for luggage on the fixed wing is a maximum of **20kg (soft bag)** per person.

Storage facilities for excess luggage are available at Maputo Airport no additional cost.

Excess luggage for guests departing by Helicopter transfer will be transported on a scheduled road transfer at a surcharge.

EXCESS LUGGAGE TRANSFERS MUST BE PRE-ARRANGED AT TIME OF BOOKING

White Pearl Resorts only offers sky transfers as a charter service to our guests when booked in conjunction with accommodation at the Resort. Charters are quoted on request and subject to availability.

ALL TRANSFERS NEED TO BE BOOKED A MINIMUM OF 7 DAYS PRIOR TO ARRIVAL

MEETING POINT

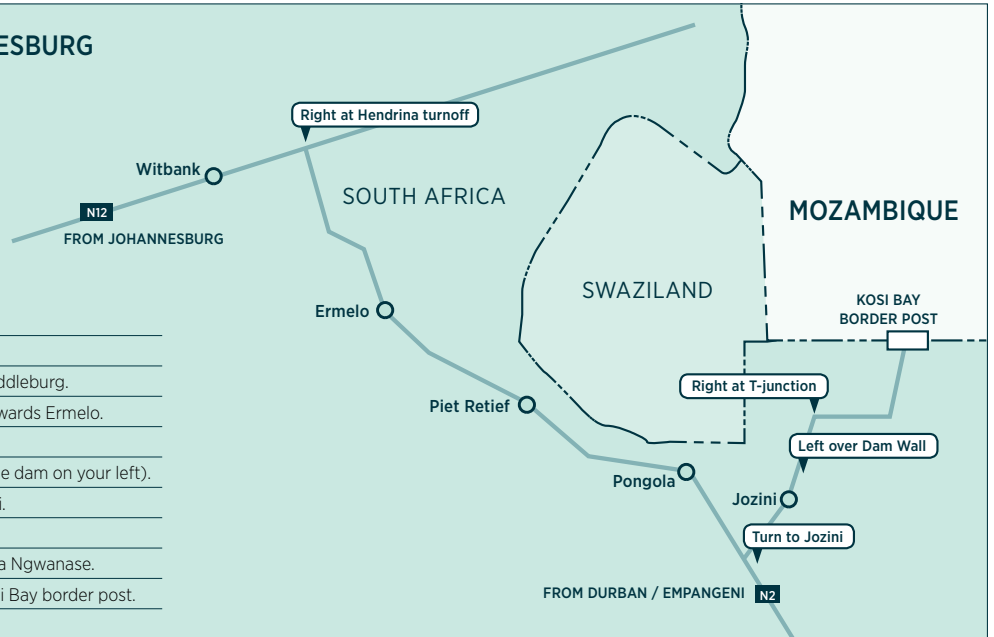
A White Pearl representative will meet and assist guests upon arrival of their flights at Maputo International Airport.

For guests already in Maputo, a White Pearl representative will meet guests at The White Pearl Kiosk.

The Kiosk is situated in the Domestic Departures area at the Airport.

SELF DRIVE DIRECTIONS

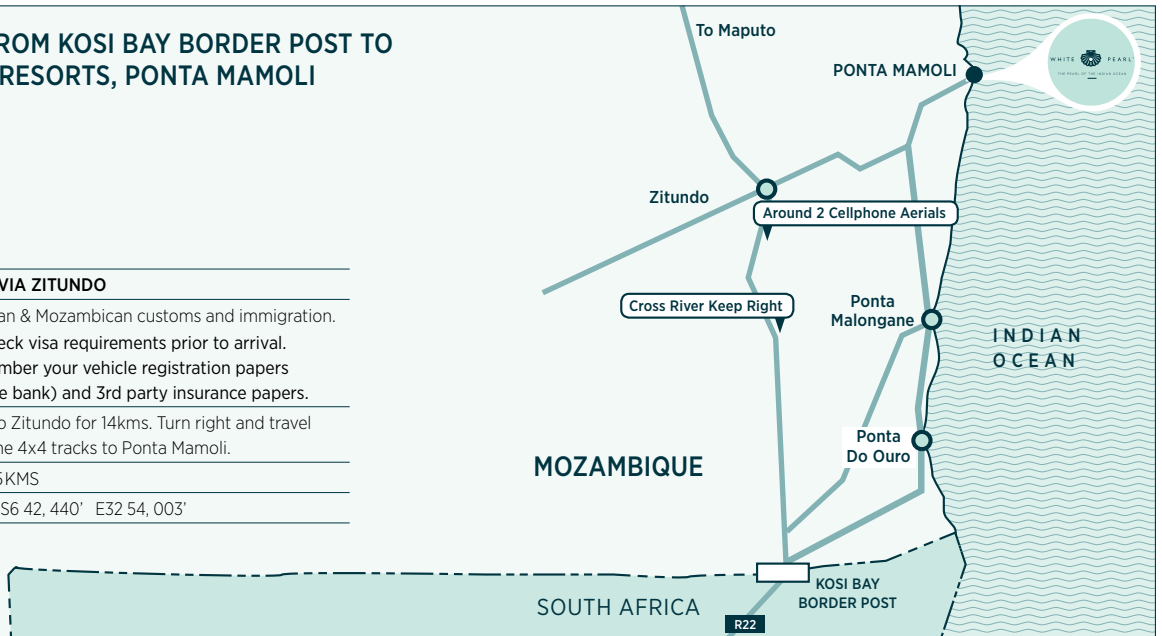
DIRECTIONS FROM JOHANNESBURG TO KOSI BAY BORDER



FROM JOHANNESBURG (± 600km)

- 1 N12 travel through Witbank towards Middleburg.
- 2 Take Hendrina turnoff and turn right towards Ermelo.
- 3 Through Piet Retief to Pongola.
- 4 50km turn left to Jozini (you will see the dam on your left).
- 5 Travel over the mountain through Jozini.
- 6 Take the left fork over the dam wall.
- 7 Turn right at the T-junction towards Kwa Ngwanase.
- 8 Straight on through Manguzi to the Kosi Bay border post.

DIRECTIONS FROM KOSI BAY BORDER POST TO WHITE PEARL RESORTS, PONTA MAMOLI



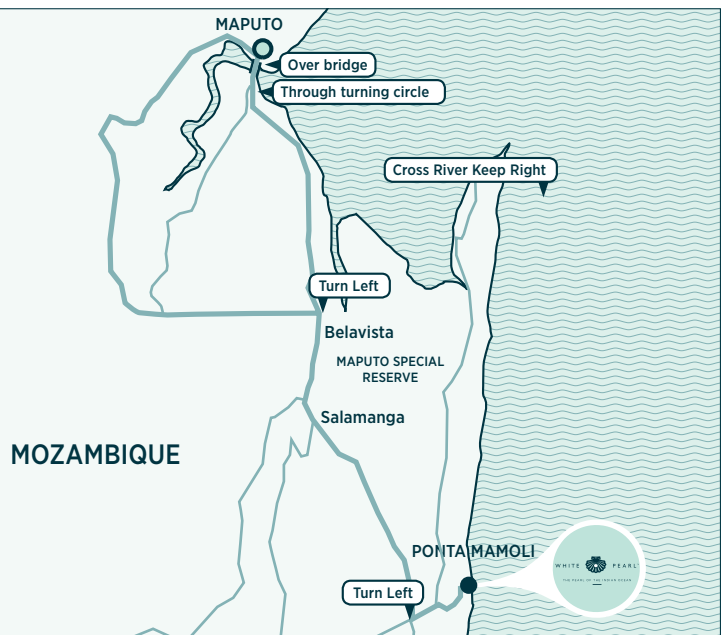
PREFERRED ROUTE VIA ZITUNDO

- 1 Clear South African & Mozambican customs and immigration. Remember to check visa requirements prior to arrival. Please also remember your vehicle registration papers (or letter from the bank) and 3rd party insurance papers.
- 2 Follow the road to Zitundo for 14kms. Turn right and travel for 11kms along the 4x4 tracks to Ponta Mamoli.

TOTAL DISTANCE : 25KMS

GPS CO-ORDINATES : S6 42, 440' E32 54, 003'

DIRECTIONS FROM MAPUTO TO WHITE PEARL RESORTS, PONTA MAMOLI



- 1 From Maputo City in Baixa (Alto Mae).
- 2 Head North West on Avenida Josina Machel for 68 metres.
- 3 Turn left onto Avenida 24 de Julho and drive 1.67km.
- 4 Take the ramp on the left and drive for 0.88km.
- 5 Continue onto Ponte Maputo Catembe and drive for 5.52km.
- 6 Enter the traffic circle.
- 7 Head straight South to Belavista.
- 8 Continue on EN100 to Salamanga.
- 9 Continue on EN200 into the Maputo Special Reserve.
- 10 After exiting the Maputo Special Reserve, travel approximately 10km and keep an eye out for a dirt road going off to the left. Take this road and continue for about 1 km.
- 11 The road will split into 2, with a tar road to Ponta Mamoli being indicated to the left.
- 12 Go left for 11 km - this 11 km stretch can only be traversed using a high slung 4x4 vehicle as the old government road is in desperate need of an upgrade.

TOTAL DISTANCE : 120KMS 02h30

GPS CO-ORDINATES : S6 42, 440' E32 54, 003'



BEACH POOL SUITES



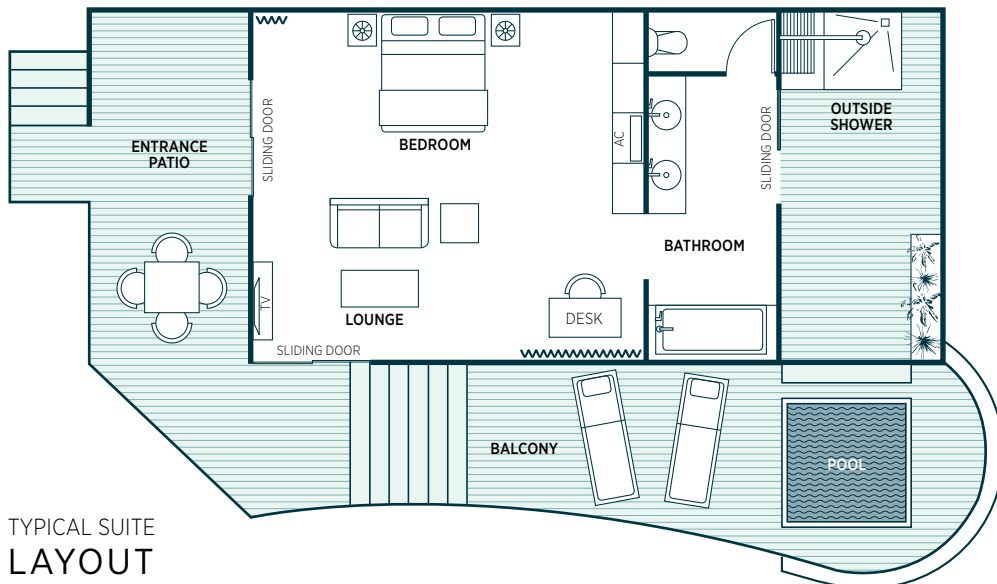
ACCOMMODATION

Nestled in a sheltered bay on Mozambique's Lagoon Coast, poised amongst the dunes on timber stilts, our 22 luxurious suites are all ocean facing with spectacular views and have been sensitively designed to take advantage of their beautiful natural setting, while protecting the fragile eco-systems beneath them. Cool, clean lines, contemporary furniture and a palette inspired by the surrounding coastal landscape, make for a getaway out of this world.

At White Pearl Resorts we have taken the utmost care to ensure our guests experience pure relaxation throughout their stay. Spend hours dreaming on your heavenly king-size bed or enjoy a bubble bath with magnificent views of the ocean. Cool off in your sparkling private plunge pool and experience the exhilarating outdoor shower.

6 BEACH POOL SUITES

- Located on the beachfront
- Direct beach access
- Private plunge pool
- Covered deck
- Outdoor shower
- Elegant living area
- Satellite TV
- Mini-bar and tea/coffee tray
- Stylish bedroom with king-size bed
- Luxurious en-suite bathroom
- Spacious - 54m²
- Air conditioning
- Unlimited Wi-Fi connectivity

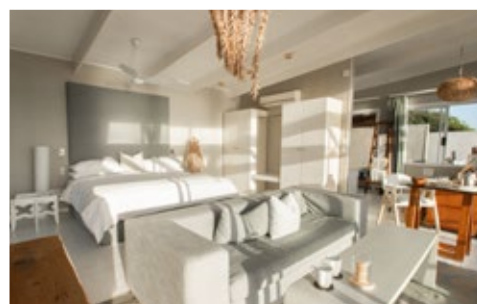


TYPICAL SUITE LAYOUT

POOL SUITES

16 POOL SUITES

- Ocean facing
- Private plunge pool
- Covered deck
- Outdoor shower
- Elegant living area
- Satellite TV
- Mini-bar and tea/coffee tray
- Stylish bedroom with king-size bed
- Luxurious en-suite bathroom
- Spacious - 54m²
- Air conditioning
- Unlimited Wi-Fi connectivity



RATE INCLUSIONS

- Luxury accommodation.
- FULLY INCLUSIVE RATE – FOOD & BEVERAGES: Full breakfast, lunch [excluding oysters and lobster on Beach Bar menu], afternoon tea, mini-bar snacks, three course dinner, canapés at the pool bar, teas, coffees, local beers, soft drinks, selection of spirits, selected cocktails, mini-bar spirits, house wines, sparkling wine and bottled mineral water.
- SOFT INCLUSIVE RATE – FOOD & BEVERAGES: Full breakfast, lunch [excluding oysters and lobster on Beach Bar menu], afternoon tea, mini-bar snacks, three course dinner, canapés at the pool bar, teas, coffees, soft drinks and bottled mineral water.
- FULL BOARD RATE – FOOD & BEVERAGES: Full breakfast, lunch [excluding oysters and lobster on Beach Bar menu], afternoon tea, mini-bar snacks, three course dinner, canapés at the pool bar, teas, coffees, and bottled mineral water.
- Service: Private butler service, laundry service [to the value of \$40 per adult, per stay] and unlimited Wi-Fi.
- Medi-vac helicopter evacuation for medical emergencies.
- Activities listed below...

WHITE PEARL RESORTS ACTIVITIES	FULLY & SOFT INCLUSIVE STAYS	≥4-NIGHT STAY PAID	ALL FULL BOARD STAYS
Beach Sports	•		•
Beach Picnic	•		
Shoreline Fishing	•		
Surfing/Kayaking	•		•
Stand-Up Paddleboarding	•		
Kids Skipper Club	•		•
Snorkelling	•		•
Stargazing/Moongazing**	•		
Local Drumming Performance	•		•
Beach Bootcamp**	•		•
Fat Bikes	•		
*Guided Lake Walk with Sundowners [2hrs]		•	
*Back, Neck & Shoulder Massage [30mins]		•	
*Turtle Walk** [Season: Nov-Feb]		•	
*Ocean Safari** [2hrs] [includes Whale watching in season: Jul - Nov]		•	
*Maputo Special Reserve Trip [±5hrs]		•	

* Each guest is entitled to one experience of any or all of these activities per stay (as per chosen rate).

** These activities are subject to a fixed schedule and subject to availability. Arrangement of these activities outside the schedule will incur a surcharge.

ACTIVITIES AT A GLANCE

ACTIVITY DETAILS

DISCLAIMER: Activities are weather dependent and White Pearl Resorts will not be held responsible in the event of activities being missed due to bad weather. We cannot guarantee spotting or interaction with any marine life.

RATE EXCLUSIONS

- Road transfers, Mozambican visa costs, flights and airport taxes, eco charge***, extra laundry, spa treatments, diving & additional activities and gratuities.
- FULLY INCLUSIVE RATE: Premium beverages, premium cocktails and champagne.
- FULL BOARD RATE: All alcoholic beverages, cocktails and champagne.

FESTIVE ADD-ONS

On the 24th & 25th of December, enjoy festive themed delights and activities. The Chef will treat guests to a special menu inspired by a fusion of traditional Christmas dishes and Mozambican flavours.

White Pearl Resorts is known for our New Year's Eve parties, where every year holds an exciting new theme and is nothing short of spectacular. Guests can expect a five-course dining feast, fine bubbly, great entertainment.

***ECO-CHARGE



As White Pearl Resorts is located within a Marine Reserve, we aspire to leave nothing but our footprints behind. In an effort to preserve our pristine piece of paradise, a compulsory eco-charge of \$25 will be added onto each guest booking as a donation. All proceeds are donated to conservation, turtle research and other eco-initiatives.

CHILD POLICY

A maximum of 2 children under the age of 16 years can be accommodated with parents in the same suite. A separate bed (¾ bed) for each child will be provided. A camp cot is available on request.

If a second room is booked, 1 child pays the adult per person sharing rate and 1 child pays the age-applicable rate. A single supplement does not apply.

Families with children under 16 years must adhere to terms and conditions of the child policy. Babysitting facility is available on the property.

Families are designated specific rooms on the property. The family dining area must be used if children are dining with parents. Should parents opt to dine as a couple, a babysitter needs to be arranged at an additional charge, as children under the age of 10 years are not permitted in the restaurant in the evenings.

BOOKING CONDITIONS

PAYMENT POLICY

- A 20% non-refundable deposit is required upon confirming a reservation.
- Full pre-payment will be required 45 days prior to arrival.
- For bookings made less than 45 days prior to arrival, full payment is required within 7 days of making the reservation.
- We accept cash payments and major credit cards for booking accommodation. Visa, Amex and Master-Card are generally accepted at the Resort. **We do not accept Diners Club cards.**
- Rates are quoted in US Dollars. Should payments be made in a currency other than USD, the exchange rate on the day of payment will apply. The Resort will not be held liable for any exchange rate fluctuations over the applicable booking and payment period.
- A refundable holding deposit is required on check in at the resort that guarantees incidentals and breakages due.

CANCELLATION POLICY

- 45 days or more prior to arrival: No Charge
- 44 - 31 days prior to arrival: 50% Cancellation Fee
- 30 days or less prior to arrival: 100% Cancellation Fee
- No shows: 100% Cancellation Fee

GROUP BOOKINGS CANCELLATION POLICY

- 60 days or more prior to arrival: No Charge
- 59 days and less prior to arrival: 100% Cancellation Fee

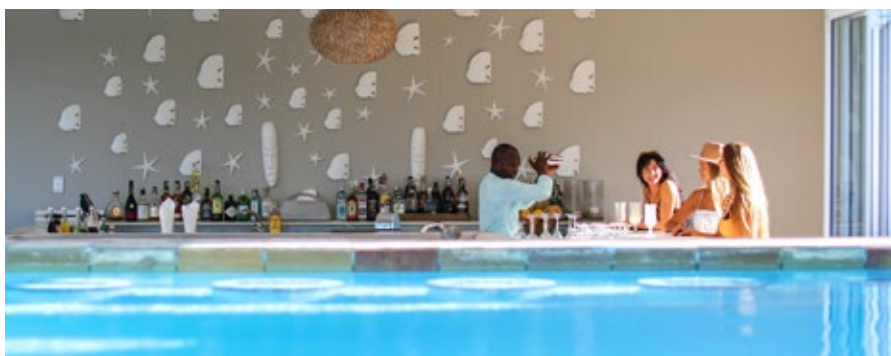
GROUP BOOKING TERMS & CONDITIONS:

A minimum of 10 adults are required to qualify for group rates. White Pearl Resorts can host a maximum of 44 adults (2 per suite sharing) based on the Resort's capacity. For bookings of 40 pax or more, exclusivity of the Resort must be booked. i.e. 22 suites must be booked. Group rates are not applicable during peak season. An automatic 10% gratuity will be levied on the final extras bill for group bookings. Discounted group rates cannot be combined with other special offer packages.

A contingency deposit is required before all group arrivals and will be refunded on departure or used against any additional costs or breakages incurred by the group.

FULL BOARD TERMS & CONDITIONS

- Full Board Rates are mutually exclusive and cannot be applied to any of our existing specials/packages.
- We reserve the right to manage inventory against Best Yield Practices.
- This rate is only applicable to new bookings/enquiries and is subject to rate availability.
- This rate is not applicable over Peak Season.



GUEST AREAS

All of the guest areas have been designed for comfort, relaxation and beachside romance – making the most of the magnificent views.

THERE ARE A NUMBER OF INTERESTING SPACES TO SUIT YOUR MOOD...

RECEPTION Our favourite place where we welcome our guests to our beautiful resort. Check-in to the experience of a lifetime. Our friendly staff will take your luggage and whisk you away to your exquisite private suite in a White Pearl golf cart.

THE BEACH BAR The Ibiza-styled glamorous Beach Bar, set against a backdrop of endless ocean, is at the heart of this unmatched beach experience. There's little better than enjoying rustic tapas served with ice cold beverages. With the breathtaking view of clear blue water and a dazzling white beach you can idle away the time in beachside comfort.

THE POOL DECK Stretch out on one of the beautiful oversized day beds or comfortable loungers while you indulge in a refreshing cocktail with views over the great expanse of the ocean and white sands.

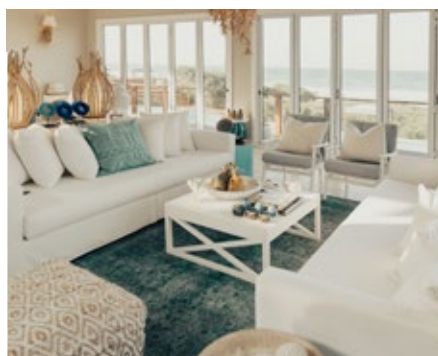
THE POOL BAR A sparkling infinity pool invites you to cool off and enjoy the spectacular views while indulging in a variety of signature cocktails at the swim-up bar. Watch the sun set while sharing your experiences of the day in our elegant beach boma over the beat of Mozambican drums.

THE JELLY FISH RESTAURANT The elegant beach chic of our restaurant is the perfect setting to enjoy mezze platters laden with fruit, freshly baked pastries and delicious treats for breakfast. By night, enjoy a romantic, candlelit dinner and celebrate the finest seafood Mozambique has to offer. The experience is complete with the warmest of Mozambican hospitality.

READING ROOM Slow down to a leisurely pace and fall into a comfortable chair in our stylish reading room, the perfect spot for perusing coffee table books in quiet surroundings. Explore the Mozambican sky with the White Pearl telescope and discover the beauty and magic the night has to offer.

WINE CELLAR Enjoy an extensive selection of some of Southern Africa's finest wines, including some of the great perennial classics, chosen to best reflect the fine cuisine prepared by our Executive Chef. Offerings range from Imported French champagnes to delectable and quaffable beach wines. Enjoy delightful beach picnics at lunch time and exquisite fine dining in the evening with deliciously appropriate wine at your service for every occasion.

MEETING ROOM & LOUNGE Overlooking the ocean, our fully equipped 12 seater boardroom-styled conference facility offers delegates and executives the ultimate tranquility and atmosphere to be inspired and focused. Facilities such as the overhead data projector, screen, flip chart and stationery are available, as well as unlimited Wi-Fi connectivity throughout the resort. To keep the energy levels up – coffee, tea and delectable biscuits are served throughout. A variety of locations can also be used for breakaway sessions around the resort.



CHECK IN: 14:00
CHECK OUT: 10:00

DINING TIMES

Breakfast	07:00 – 10:30
Lunch	11:00 – 15:00
Afternoon Tea	16:00 – 17:00
Dinner	19:00 – 22:00

RESORT POLICIES

Appropriate attire is required for evening dinners. Shorts, flip flops or swimwear are not permitted in the dining areas in the evenings.

To maintain the privacy of our guests, we do not allow drones to be used on the property.

No alcohol may be brought onto the premises.



GENERAL INFORMATION

ADAPTORS

All electrical outlets are 220v AC. International adaptors are available upon request.

PAYMENTS

We accept cash payments and major credit cards for booking accommodation.

Visa and MasterCard are generally accepted at the Resort.

Diners Club cards and Cheques are NOT accepted.

ACTIVITIES AT A GLANCE

We have a broad offering of activities to suit every kind of traveller – encompassing themes of nature and adventure, relaxation and wellbeing or culture and philanthropy. Kindly note that included activities will vary according to your particular package (as indicated).

ACTIVITIES INCLUDED IN



ACTIVITIES ARE WEATHER AND TIDE DEPENDENT. WHITE PEARL RESORTS CANNOT GUARANTEE SPOTTING OF MARINE LIFE.

NATURE & ADVENTURE

ACTIVITY	DURATION	MINIMUM GUESTS	MAXIMUM GUESTS	FULLY & SOFT INCLUSIVE STAYS	≥4-NIGHT STAY PAID	ALL FULL BOARD STAYS
*OCEAN SAFARI**	2 Hours	4	10			
*TURTLE WALK SEASONAL : NOV-FEB	1 Hour	2	-			
*MAPUTO SPECIAL RESERVE TRIP	±5 Hours	2	6			
FAT BIKES	-	-	-			
SURFING, KAYAKING, STAND-UP PADDLING & SNORKELLING	-	-	-			
KIDS SKIPPER CLUB	-	-	-			
BEACH SPORTS	-	-	-			
BUSH / BEACH HORSE RIDING	1 Hour	1	-			
GUIDED ROCKY SHORE EXPERIENCE	1 Hour	2	4			
DEEP SEA FISHING	6 Hours	n/a	6			

SCUBA DIVING

ACTIVITY	DURATION	INFORMATION	MIN GUESTS	NOTES
REEF DIVE	1 Hour	Explore our classified dive reef	2	All dives include equipment.
REFERRAL DIVE	2 Hours	Excludes certification fee	2	Dive courses include the following; qualification dives where applicable, study manuals and online registration.
PADI DISCOVER SCUBA COURSE	1 Day	This is not a certification course	-	
PADI SCUBA REVIEW COURSE	1 Day	Refresher for certified divers	-	US\$ 5 Maritime Tax per person per week is charged for all divers.
PADI OPEN WATER COURSE	3-5 Days	Qualify as an open water diver - 18m	-	
PADI ADVANCED OPEN WATER COURSE	3-5 Days	Qualify as an advanced diver - 30m	-	Guests who would like to complete a PADI dive course are required to submit a RSTC dive medical form.
PADI ADVENTURE DIVER COURSE	3-5 Days	The 3/5 of the Advanced certification	-	
PADI RESCUE DIVER COURSE	3-5 Days	Qualify as a rescue diver	-	All courses are weather dependent.

RELAXATION & WELLNESS

ACTIVITY	DURATION	MINIMUM GUESTS	MAXIMUM GUESTS	FULLY & SOFT INCLUSIVE STAYS	≥4-NIGHT STAY PAID	ALL FULL BOARD STAYS
*BACK, NECK & SHOULDER MASSAGE	30 Min	-	-			
*GUIDED LAKE WALK WITH SUNDOWNERS	2 Hours	2	-			
BEACH PICNIC FOR TWO	-	-	-			
STARGAZING/MOON GAZING**	-	-	-			
SHORELINE FISHING	-	-	-			
BEACH BOOTCAMP**	-	-	-			
SPA TREATMENTS	Please request Spa Menu for detailed treatments					

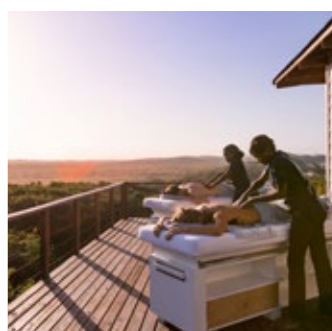
CULTURE & PHILANTHROPY

ACTIVITY	INFORMATION	FULLY & SOFT INCLUSIVE STAYS	≥4-NIGHT STAY PAID	ALL FULL BOARD STAYS
GROWING PEARLS	On request and pre-booking			
LOCAL DRUMMING PERFORMANCE**	In boma before dinner			
SOS (SAVE OUR SEAS) WALK	At leisure / Saturday at 07h45			

* Each guest is entitled to one experience of any or all of these activities per stay (as per chosen rate).

** These activities are subject to a fixed schedule and subject to availability. Arrangement of these activities outside the schedule will incur a surcharge.

ACTIVITY DETAILS



WHITE PEARL ACTIVITIES

NATURE & ADVENTURE



OCEAN SAFARI (2 Hours)

Venture by boat to the nearby pinnacle reef for a snorkelling trip, and you could swim with the Bottlenose Dolphins that regularly glide through these waters – a sublime experience you won't easily forget. From July to November each year, you may encounter the majestic Humpback and Southern Right whales in their natural habitat as they visit us on their annual migration. Whale watching is conducted from the comfort of our snorkelling boat as we observe the whales blowing, breaching, lob tailing and playing. Later in the season, you may encounter their newborns too!

TURTLE WALK (Seasonal: Nov – Feb)

Our resort is home to one of the richest turtle nesting sites in southern Mozambique. From Nov – Feb each year, guests have the opportunity to witness an extraordinary feat of nature first-hand. Loggerhead and Leatherback Turtles head to this stretch of coast to lay their eggs, and, a few weeks later, the hatchlings make their first-ever voyage to the ocean. The Resort has partnered with the Southern Mozambique Marine Turtle Nesting Monitoring, Tagging & Conservation Programme to monitor and protect these endangered creatures.

MAPUTO SPECIAL RESERVE TRIP (±5 hours)

The perfect outing for the early-morning intrepid adventurer. Meet your Game Ranger in the reading room for early morning coffee & rusks to depart at 05h00. Set out for the Maputo Special Reserve, which forms part of the Lebombo Transfrontier Conservation Area. Here, you may see a variety of African antelope species, rich birdlife and possibly the rare black-backed jackal – and there is a great chance of seeing elephants, of course! A light packed breakfast is to be enjoyed in the reserve, most usually at the lake's edge and perhaps meet some flamingos!

FAT BIKES

Hop onto one of our thick-wheeled fat bikes and cycle along the shoreline. It's a wonderful way to explore our secluded bay – and great exercise too!

SURFING, KAYAKING, STAND-UP PADDLING & SNORKELLING

Feel the azure waters rising up below you as you surf the waves, or delight in the serenity beyond the breakers as you glide along on a stand-up paddleboard. Kayak as a pair and bond as seafaring adventurers, or set off in a solo vessel and challenge your inner Con Tiki spirit. Float in the azure waters of the Indian Ocean and observe the sea life nestled in the shore break reefs.

BEACH SPORTS

Enjoy an exciting game of volleyball or soccer on the beach. Great for team building or bonding with your fellow travel companions.

BUSH OR BEACH HORSE RIDING (1 hour)

Explore the nearby bush trail on horseback, weaving through indigenous flora and fauna and enjoy spectacular views of the ocean from high-up vantage points, or gallop along our pristine beach and explore the beautiful natural surroundings. All rides are professionally managed to ensure an enjoyable experience for all ages and levels of experience. A weight restriction of 80kg – 100kg applies to all horse rides.

GUIDED ROCKY SHORE EXPERIENCE (1 hour)

This experience is for guests who are passionately curious about the little things in life and want to learn more about how animals have adapted to thrive in this constantly changing environment. The activity has a story telling component that engages mythology. Rock exploration footwear is provided at the activities centre, which is the meeting point.

DEEP SEA FISHING (6 hours)

An adventure that starts early in the morning. Refreshments and a packed lunch will be provided. At the end of the day, we wish you to return home with an amazing catch for the Chef to prepare – fresh from the sea.



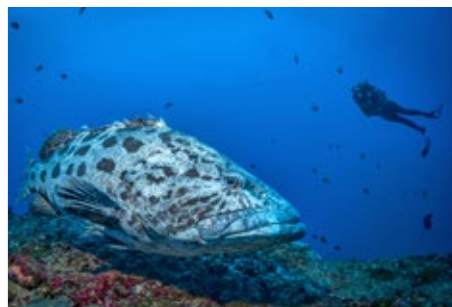
WHITE PEARL ACTIVITIES

SCUBA DIVING



PINNACLE REEF

White Pearl Resorts offers unique diving experiences at one of the world's top pinnacle reefs. A variety of dive spots offer something for everyone, from exhilarating shark sightings to multitudes of fish and vibrant corals. A professional, safe and world class interpretive diving experience.



REEF DIVE

Explore our exceptional and classified diving reefs. Includes full dive gear.

REFERRAL DIVE

Divers who have done part of their training elsewhere already, can complete it here with us. Referral paperwork will be required on site for completion of training. Includes full dive gear. For completion of training and certification, an additional certification fee is payable.

PADI DISCOVER SCUBA COURSE (1 Day)

Please note that this is not a certification course, but is a wonderful introduction to the underwater world. Theory, pool session, 1 dive and all equipment hire.

PADI SCUBA REVIEW COURSE (1 Day)

A refresher for certified divers who have been inactive. Includes a review of dive planning and procedures, pool session, 1 dive and all equipment hire.

PADI OPEN WATER COURSE (3-5 Days)

Qualify as an open water diver (dive independently with a buddy to

a maximum of 18 meters). Theory, pool sessions, 4 qualifying dives, equipment hire, use of all course books and certification.

PADI ADVANCED OPEN WATER COURSE (3-5 Days)

Qualify as an advanced diver (dive independently with a buddy to a maximum of 30 meters). Pre-qualification as an open water diver is required. Knowledge development, 5 qualifying dives, equipment hire, use of all course books and certification.

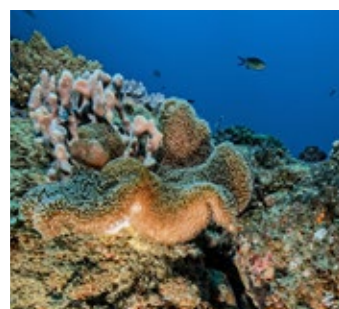
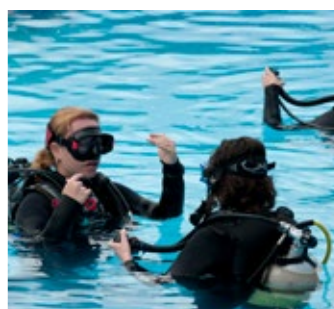
PADI ADVENTURE DIVER COURSE (3-5 Days)

The 3/5 of the Advanced certification. For Advanced certification, divers have to complete 5 "adventure" dives including one deep and one navigation dive. An "adventure" dive is a training dive that allows a diver to improve their dive skills or try a new activity underwater like deep diving, drift diving, wreck diving, navigation, photography etc. The Adventure Diver certification recognizes someone who has completed 3 or more adventure dives but may not have met the full requirement for Advanced certification.

PADI RESCUE DIVER COURSE (3-5 Days)

Qualify as a rescue diver. Pre-qualification as an advanced open water diver is required. Knowledge development, 5 qualifying dives, equipment hire, use of all course books and certification.

Dive courses include the following; qualification dives where applicable, equipment hire, study manuals and online registration. A Maritime Tax per person per week is charged for all divers. Guests who would like to complete a PADI dive course are required to submit a RSTC dive medical form. All courses are weather dependent.



WHITE PEARL ACTIVITIES

RELAXATION & WELLNESS



GUIDED LAKE WALK WITH SUNDOWNERS (± 2 hours)

Enjoy a tranquil short walk and lakeside sundowners at nearby Lake Mamoli guided by your butler.

BEACH PICNIC FOR TWO

A feast for all five senses – look over the endless Indian Ocean, listen to the gentle crashing of the waves, feel the sand between your toes, smell the aromas emerging from your picnic basket and taste the flavours of Mozambique while indulging in its contents. Enjoy a private picnic on the beach. Customise your luxury picnic basket with a variety of signature treats. The perfect way to spend a sunny afternoon.

STARGAZING/MOON GAZING

Explore the Mozambican sky through the White Pearl telescope and you discover the beauty and magic the night has to offer.

SHORELINE FISHING

Catch fish from the glittering shoreline while enjoying the wonderful view.

BEACH BOOTCAMP

With the beach as your gym, work up a sweat whilst enjoying the view in our all-new Beach Bootcamp class.

SPA TREATMENTS

Surrounded by soothing sounds and calming scents, experience a variety of individual and couples' spa treatments. Lose yourself in the breath-taking view of the lake and the calming ocean as you experience utter revitalisation of your body and soul.

Enhance your glowing tan with skin pampering treatments and show off your beautiful and elegant, pampered feet in pretty beach sandals. Couple's treatments bring harmonious indulgences. If whizzing off to the undeniably beautiful spa seems like a rude distraction from your world class suite, the therapists can come to you instead!

We offer signature treatments using premium product ranges such as Thalgo.



CULTURE & PHILANTHROPY

GROWING PEARLS

Growing Pearls is a community initiative created by White Pearl Resorts with the purpose of giving back to the local community and empowering its people. Guests can become involved and share in our vision of building a stronger community. **This is an activity done on a request basis only and must be pre-arranged.**

LOCAL DRUMMING PERFORMANCE

Enjoy a traditional dancing and drumming show in our Boma area before dinner, on selected days, performed by a local group.

SOS (SAVE OUR SEAS) WALK

Help us save our marine life! From time to time, assorted ocean debris can unfortunately wash up into our bay. If the state of the world's oceans and beaches is a matter you wish to get involved in, we have large litter collection bags available at the Activities Centre.

Alternatively, guests can join our staff who tackle the problem as a team every Saturday at 7h45 departing from the Activities Centre.



WHITE PEARL RESORTS SPECIAL OFFERS

VALID: 07 JANUARY 2020 – 19 DECEMBER 2020
[STANDARD AND LOW SEASON ONLY]

All offers are subject to availability, mutually exclusive and cannot be combined with any other offers.

White Pearl Resorts reserves the right to discontinue a promotion at any time.



EARLY BIRD SPECIAL

Bookings confirmed or paid for 90+ days prior to travel date: **Additional 5% commission.**

Bookings confirmed or paid for 180+ days prior to travel date: **Additional 10% commission.**

TERMS & CONDITIONS:

Additional commission is only applicable to accommodation rates. This offer does not apply on peak season dates between 20 December 2020 & 31 December 2020.

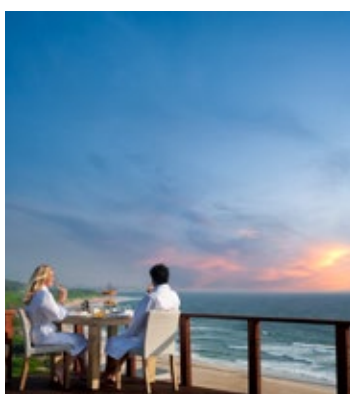


ACCESS ON US

Book for 6 nights or more and receive a **Complimentary return Sky & Road Transfer.**

TERMS & CONDITIONS:

This offer is valid during standard and low season only. All transfers are subject to availability and scheduled travelling times. Transfers consist of 1 x helicopter transfer and 1 x road transfer per person between Maputo & White Pearl Resorts.



HONEYMOON HAPPINESS

Book for 5 nights or more and your spouse will receive **50% OFF.**

TERMS & CONDITIONS:

This offer is valid during standard and low season only. Marriage certificate is a pre-requisite for this booking.



STAY 5 PAY 4 – FAMILY SAVER

Pay for 4 nights and receive the **5th night complimentary.**

TERMS & CONDITIONS:

This offer is valid during standard and low season only. Maximum 2 kids below the age of 12 years sharing with 2 paying adults stay free of charge for the full duration of the booking.



LEISURE GROUP BOOKINGS

10-22 PAX : **5% OFF** the rack rate

23-44 PAX : **10% OFF** the rack rate

TERMS & CONDITIONS:

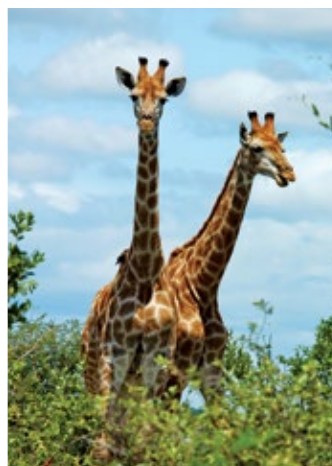
See group booking policy [HERE](#)

KRUGER TO COAST

4-NIGHTS

The perfect end to your Kruger safari expedition would be a relaxing escape to White Pearl Resorts – the epitome of Mozambican beach chic. Getting there has never been this easy! Our convenient package options include return transfers and accommodation at the Resort

– THE ULTIMATE BEACH EXTENSION TO COMPLETE YOUR BUSH AND BEACH EXPERIENCE...



INCLUSIONS:

- Luxury accommodation.
- TRANSFERS: – Complimentary fixed-wing sky transfer from Kruger Mpumalanga International Airport (KMIA) to Maputo International Airport. – Road transfer from Maputo International Airport to White Pearl Resorts. – Road transfer from White Pearl to Maputo International Airport.
- FOOD & BEVERAGES: Full breakfast, lunch (excluding oysters and lobster on Beach Bar menu), afternoon tea, mini-bar snacks, three course dinner, canapés at the pool bar, teas, coffees, local beers, soft drinks, selection of spirits, selected cocktails, mini-bar spirits, house wines, sparkling wine & bottled mineral water.
- SERVICE: Private butler service, laundry service and unlimited Wi-Fi.
- Medi-vac helicopter evacuation for medical emergencies.
- INCLUDED ACTIVITIES:

≥4-NIGHT STAYS

Beach Sports	Beach Picnic
Shoreline Fishing	Surfing/Kayaking
Stand-Up Paddleboarding	Kids Skipper Club
Snorkelling	Fat Bikes
Local Drumming Performance	Beach Bootcamp**
Stargazing/Moongazing**	*Back, Neck & Shoulder Massage (30mins)
*Guided Lake Walk with Sundowners (2hrs)	*Turtle Walk** (Season: Nov-Feb)
*Ocean Safari**(2hrs) Includes whale watching in season : Jul-Nov	*Maputo Special Reserve Trip (±5hrs)

*Each guest is entitled to one experience of any or all of these activities per stay.

** These activities are subject to a fixed schedule and subject to availability.

Arrangement of these activities outside the schedule will incur a surcharge.

All premium activities can be found on the [ACTIVITY OPTIONS](#)

EXCLUSIONS:

Mozambican visa costs, flights and airport taxes, eco charge, premium beverages, premium cocktails, champagne, extra laundry, spa treatments, diving and additional activities.

TRANSFERS

Included in the package is a sky transfer from Kruger Mpumalanga International Airport to Maputo International Airport followed by a complimentary road transfer to White Pearl Resorts. This option is followed by a road transfer from Maputo International Airport to White Pearl Resort, which is approximately 90 minutes.

Kruger Mpumalanga International Airport (KMIA) to Maputo International Airport	Fixed-Wing	Departs 12:30
Minimum 2 pax		Arrives 13:15

The fixed-wing can accommodate a maximum of 8 guests and the road transfer a maximum of 4 guests. Should a booked party exceed the maximum capacity, an additional aircraft and vehicle will be utilised. White Pearl Resorts accepts a minimum of 2 guests for transfers.

LUGGAGE

The allowance for luggage on the fixed wing flight and road transfer is a maximum of **20kg (soft bags)** per person. Should a guest opt to use the charter helicopter** transfer option upon returning to Maputo, a **12kg luggage restriction** applies for the full duration of the trip. Excess luggage will be transported on a scheduled road transfer at a surcharge and need to pre-arranged at time of booking. Arrangements made on arrival may be subject to time constraints.

**Charter Helicopter transfers are quoted on request, per 3 seater or 5 seater helicopter.

TERMS & CONDITIONS:

- Rates subject to a minimum of 2 guests travelling.
- The package may not be amended or combined with any other offer.
- Rates are quoted in US Dollars and are subject to change without prior notice.
- Excludes accommodation in the Kruger.
- Package transfers starts at Kruger Mpumalanga International Airport and ends in Maputo. Transfers are non-commissionable.
- **PAYMENT POLICY:** A 20% non-refundable deposit is required upon confirming a reservation. Full pre-payment will be required 45 days prior to arrival. For bookings made less than 45 days prior to arrival, full payment is required within 7 days of making the reservation. We accept cash payments and major credit cards for booking accommodation. Visa, Amex and MasterCard are generally accepted at the Resort.
- **CHILD POLICY:** A maximum of 2 children under the age of 16 years can be accommodated with parents in the same suite. A separate bed will be provided. A camp cot is available on request. If a second room is booked, 1 child pays the adult per person sharing rate and 1 child pays the age-

applicable rate. Families with children under 16 years must adhere to terms and conditions of the child policy. The family dining area must be used if children are dining with parents. Should parents opt to dine together in the restaurant, a childminder needs to be arranged at an additional charge, as children under the age of 10 years are not permitted in the main restaurant in the evenings.

- Accommodation is subject to availability. Transfers and activities are subject to weather conditions.
- **TRAVEL REQUIREMENTS:** Tourism visas for all nationalities can be obtained at all major ports of entry (applicable to White Pearl Resorts: Kosi Bay, Maputo International Airport, Komatipoort). Please ensure that you are familiar with the requirements pertaining to border visa payment and documentation prior to arrival. It is the responsibility of the guest, not the Resort, to ensure that all international travel requirements are met upon travelling to the resort. Passports, visas and documentation should be available for presentation throughout travel, arrival and departure. We recommend that guests take out comprehensive travel insurance, as White Pearl Resorts will not be held liable for any refunds or payment for alternative accommodation due to inclement weather conditions or any other causes out of our control.

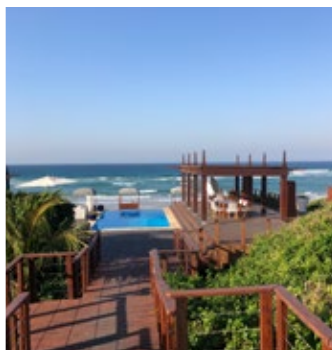
DISCLAIMER: Activities are weather dependent and White Pearl Resorts will not be held responsible in the event of activities being missed due to bad weather. We cannot guarantee spotting or interaction with any wildlife.

ZULU & PEARLS

7-NIGHTS

A cultural bush adventure meets contemporary beach luxury with this diverse 7 night package combining Thanda Safari Lodge in South Africa and White Pearl Resorts in Southern Mozambique.

- THE ULTIMATE BUSH & BEACH COMBINATION...



THANDA SAFARI LODGE HIGHLIGHTS

- Exclusive close-up encounters with Africa's magnificent 'Big Five'.
- Explore 14 000 hectares of pristine bush with guided walks and game viewing.
- Experience the local Zulu culture.
- Access to the heavenly Thanda Spa.

WHITE PEARL RESORTS HIGHLIGHTS

- Sublime ocean frontage with long, private beach.
- Ocean adventures viewing resident dolphins.
- Chic, spacious suites with plunge pools & outdoor showers.
- Whale migration Jul - Nov and Turtle nesting Nov - Feb.
- Kayaking, diving, snorkelling, horse riding, spa treatments
- Kids activities including volleyball, beach cricket, surf lessons, kite flying & sand castle building.



ACCOMMODATION

THANDA SAFARI LODGE

3 NIGHTS - FULLY INCLUSIVE

Spend three nights at Thanda Safari Lodge. Step out onto your wooden deck. Take a dip in your infinity pool. Enjoy dinner served in your own private boma or admire the African sunset from the circular daybed atop your thatched outdoor sala. Each suite is a tribute to abundance, Africa-style - with a spacious lounge and majestic master bedroom and double-sided fireplace.

INCLUDES:

- All meals and selected local beverages (soft drinks, house wines, local spirits and beers) and in-room minibar.
- Two game drives per day with professional guide and tracker and bush walks with specialist walking guides.
- Wi-Fi
- Laundry Service

WHITE PEARL RESORTS

4 NIGHTS - LUXURY POOL SUITE - FULLY INCLUSIVE

Sophisticated simplicity invites you to enjoy a relaxing... Take a dip in your private plunge pool, relax on the spacious covered deck, cool off in a refreshing outdoor shower or retreat to the intimacy of your bedroom surrounded by nature. Your timeless, breezy retreat maximises the breathtaking views creating private outdoor spaces.

INCLUDES:

- All meals (excluding oysters and lobster on Beach Bar menu), bottled mineral water, teas, coffees, afternoon tea, mini bar snacks, local beers, soft drinks, selection of spirits, mini bar spirits, selected cocktails, house wines, sparkling wine, private butler service.
- Laundry Service
- Wi-Fi
- Assorted beach and water sports, Beach Picnic, 30-Minute Back, Neck & Shoulder Massage, Kids Skipper Club, Guided Lake Walk with Sundowners, Maputo Special Reserve Trip, Stargazing/Moongazing, Local Drumming Performance, Turtle Walks (seasonal) and an Ocean Safari.

TRANSFERS

The following transfers are included in this package:

ROAD TRANSFERS:

- Durban (King Shaka International Airport) – Thanda Private Game Reserve.
– This transfer takes approximately 3 to 4 hours.
- Thanda Private Game Reserve – Kosi Border Post (with Mozambique).
– This transfer takes approximately 3 hours.
- Kosi Border Post – White Pearl Resorts.
– This transfer takes approximately 45 minutes.
- White Pearl Resorts to Maputo International Airport.
– A 90 minute road transfer to Maputo International Airport*.

ALTERNATIVE ROAD TRANSFERS**

- Richards Bay Airport – Thanda Private Game Reserve.
– This transfer takes approximately 1½ to 2 hours.
- Phinda Airstrip – Thanda Private Game Reserve.
This transfer takes approximately 45 minutes.

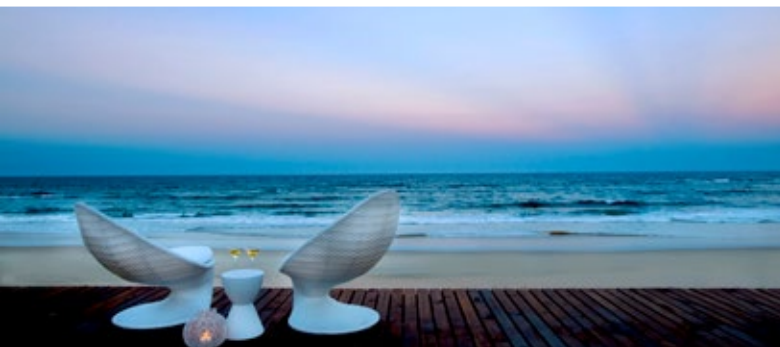
** Alternative transfers are subject to availability, additional costs may apply. A helicopter transfer from White Pearl Resorts to Maputo International Airport is available and is classified as a Charter transfer. The Charter is quoted on request per 3 or 5 seater helicopter.



TERMS & CONDITIONS:

- A festive surcharge applies on 24, 25, and 31 Dec.
- Rates subject to a minimum of 2 guests travelling.
- All bookings to be directed to White Pearl Reservations.
- Single traveller supplement and child rates will be quoted on request.
- Please refer to the individual properties for package exclusions and child policies.
- Upgrade to a Beach Pool suite available at an additional charge, subject to availability.
- The rates quoted are in US Dollars (USD) and are subject to change without prior notice.
- **PAYMENT POLICY:** A 20% non-refundable deposit is required upon confirming a reservation. Full pre-payment will be required 45 days prior to arrival. For bookings made less than 45 days prior to arrival, full payment is required within 7 days of making the reservation. We accept cash payments and major credit cards for booking accommodation. Visa and MasterCard are generally accepted at the Resort.
- Accommodation subject to availability. Transfers and activities are subject to weather conditions and schedules. Early check-ins and/or late departures will be subject to a surcharge.
- Please note that the helicopter can take a maximum capacity of 4 adults.
- **TRAVEL REQUIREMENTS:** It is the responsibility of the guest to ensure that all international travel requirements are met upon travelling. Passports, visas and documentation should be available for presentation throughout travel, arrival and departure. We recommend that guests take out comprehensive travel insurance, as White Pearl Resorts will not be held liable for any refunds or payment for alternative accommodation due to inclement weather conditions or any other causes out of our control.
- Standard trading terms and conditions apply.

GUESTS CAN OBTAIN THEIR MOZAMBIKAN VISA AT THE KOSI BAY BORDER. PAYMENT CAN BE MADE IN RANDS OR US DOLLARS. CASH ONLY.



WHITE  PEARL™

THE PEARL OF THE INDIAN OCEAN

+27 (0)11 026 2674
 reservations@whitepearlresorts.com
 www.whitepearlresorts.com