



PRANA

LODGE & FOREST
WELLNESS RETREAT

Weddings at Prana Lodge are a destination experience and incorporate a full weekend of celebrations!

Every wedding at Prana Lodge is different, as each couple is so unique.

Every detail of your event will be tailor made to suit your individual requirements & we will make sure that you take part in all the fun decisions regarding your Wedding, without having to worry about the stressful particulars & logistics.





- As we are a small boutique Lodge, it is essential that all our suites are utilised for the wedding weekend. We have put together various packages which allow you to choose the most suitable for you and your specific requirements.
- Our wedding planner and floral designer Megan Van Den Berg, will be your dedicated wedding coordinator. Megan and her team create incredible experiences and will go above and beyond for your special day. -This is unfortunately non-negotiable.
- The Lodge is currently undergoing some exciting renovations and we will be further elevating our guest experience with the addition of a Luxury Villa from June 2023, increasing our guest capacity by 8 people from a maximum inhouse capacity of 16 pax to 24 pax.
- We do not supply a cash bar, and apart from wines, don't allow guests to supply their own alcohol. We can put restrictions on what is served and are successful in managing these costs accordingly. I have included more details on this below.
- If you haven't viewed the property in person, we require that you meet with us at Prana Lodge before confirming the occasion. This is to ensure we manage and exceed your expectations for the weekend.

Accommodation

The lodge currently accommodates 16 people in total.

We offer 8 individually designed suites sleeping a maximum of 2 guests per suite, featuring Persian carpets, luxury linens, oversized bathrooms with garden views, all completely private & secure behind your own garden walls, with a patio to enjoy your own plunge pool.

Included in the accommodation rate is two nights' accommodation on Bed & Breakfast Basis for the entire Lodge: The night Prior to the wedding, and the wedding night. Breakfast would be included on Day 2 and day 3.

Please note that as we are preparing for your wedding, we do not offer any dining service on the night before your wedding.

For your rehearsal dinners we would like to recommend the following restaurants:

- **Olivewood Golf Estate:** 087 350 4310
joinus@olivewoodestate.com
- **Crawfords Beach Lodge Bungalow on Beach:** 0437385000
info@crawfordsbeachlodge.co.za
- **Emerald Vale brewery:** 043 738 5397
petra@evbcevents.co.za
- **Tea in the Trees:** 072 611 2367
teainthetrees@gmail.com

For wedding guests not staying inhouse at Prana Lodge there are several options in Chintsa & The surrounding East Coast Area : www.wildcoastbookings.co.za



Ceremony Venues

- **Forest Wedding**
- **Garden Wedding**
- **Poolside Terrace** (covered, maximum 50 guests)

An additional Ceremony Venue in Chintsa East:

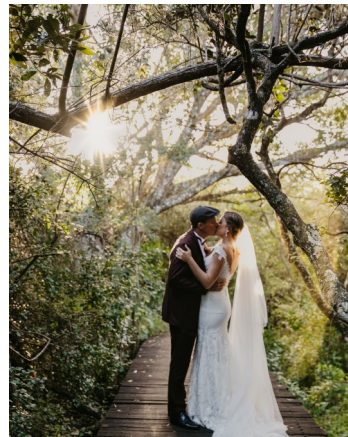
The Chintsa Chapel: 0437385161 This is a beautiful venue should you be having your ceremony in the garden or in our forest, we recommend that you also reserve the chapel as a back-up plan as we cannot be held responsible for the weather. Costs paid directly with the Church committee

Reception Venue: Prana Lodge Dining Room

The Prana Lodge dining room is set amongst the rich foliage of the Dune Forest. High open ceilings, large glass stack back doors which open out onto a patio creating a beautiful spacious environment. During the colder months, an open fireplace is available to add the necessary warmth to the cosy setting. A raised fire Boma outside the dining room can be used for warmth or merely to create a beautiful effect. Easy access between the dining room and the bar lounge allows for a relaxed upmarket space for your guests to enjoy your special day. Capacity: maximum 40 pax

Reception Venue: Prana Lodge pool terrace

The Prana Lodge pool terrace is surrounded by the beautiful Prana gardens. The open terrace stretches out onto a beautiful, flowing lawn and would be an ideal spot for a late afternoon or early evening cocktail event. Easy flow between the terrace and the lawn allows you to increase your number of guests who attend your special day. Capacity: Maximum 60 guests formally seated and maximum 80 guests cocktail style.

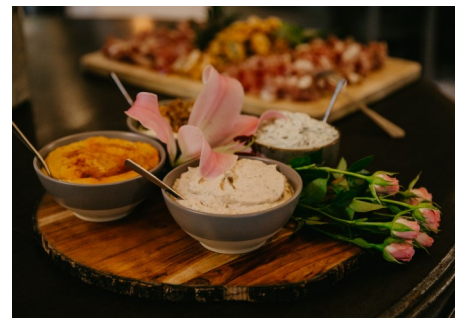


Catering

Prices start from R805.00 per person.

Included in the catering cost for a **Traditional Pated Dinner** is bottled waters at the ceremony, a welcome drink and selection of canapés for your guests on arrival at the reception, followed by a delectable 3 course sit-down meal.

An alternative **Cocktail Style Dinner** option includes bottled water at the ceremony, a welcome drink and selection of canapés for your guests on arrival at the reception, followed by a selection of contemporary food stations for a high end walk around dinner. You will have several menu choices to choose from, which will be discussed and finalised a few months prior to the event.



Beverages:

We provide a full bar service. We do not allow a cash bar, but there are two options available to the wedding couple.

Beverages are run on an open tab, and the selection can be limited based on your requirements, firstly by placing a price limit on consumption; secondly, restricting the serving of imported spirits.

We recommend budgeting R400 per person for drinks. We are happy to order in selected beverages not available on our current beverage list, however, as mentioned above, we will only allow for guests to bring in their own wine if it is not in our offering, at a Corkage fee per bottle.

White Wine: R120.00

Red Wine: R150.00 MCC

Champagne: R200.00

As a rough calculation for serving wine, you would divide the number of people by 2 and then split this in half for red and white.

For Champagne, budget on 10 toasts per bottle and then add a few extra for the occasional person who drinks this.

Summary of Costs

Accommodation 2022- 31 May 2023

Two nights' accommodation on Bed & Breakfast Basis for the entire Lodge: The night Prior to the wedding, and the wedding night: R102,400.00 Total of 16 Guests 8 Suites- 16 guests - max 2 guests per suite

Accommodation 1 June 2023- 31 May 2024

Two nights' accommodation on Bed & Breakfast Basis for the entire Lodge: The night Prior to the wedding, and the wedding night: R151, 850.00 Total of 24 Guests:

1 Luxury Villa – 8 Guests

8 Suites- 16 guests- max 2 guests per suite

Venue Hire Venue Hire

0-40 Guests Base Cost: R35,000.00

A supplement of R250.00 per person over 40 guests

Catering Reception Catering from: R805.00 pp

(Includes: Bottled Water at the ceremony, Welcome Drink, Canapes, Starter, Main, Dessert)
Add on Mid-Night-Munchies for R195.00 pp

The above includes:

- The ceremony & reception venue
- Ceremony and reception venue: set up & clean up
- Tables and basic white tablecloths
- Chairs (standard Wimbledon chairs) • Standard glasses, cutlery and crockery

The above excludes:

- All beverages
- After hours charge – R3000 per hour after 12am
- Décor and flowers
- Additional venues

An afterhours venue rate of R3000.00 per hour will be charged per hour after 12am.

Winter rates (15 May- 15 Aug 2023) A 10% discount on Wedding Package

Terms & Conditions:

A service charge of 10% will be added onto the food & beverage cost on the final bill. Please note all deposits are non-refundable.

We will not confirm the booking without a deposit. 25% of booking value up front to confirm the date. 50% of booking 90 days before 25% of booking 60 days before

