



Activity Guide



Day 1 - Day of arrival

Your normal arrival time at Ghoha Hills from Savuti Airstrip is around midday to early afternoon.

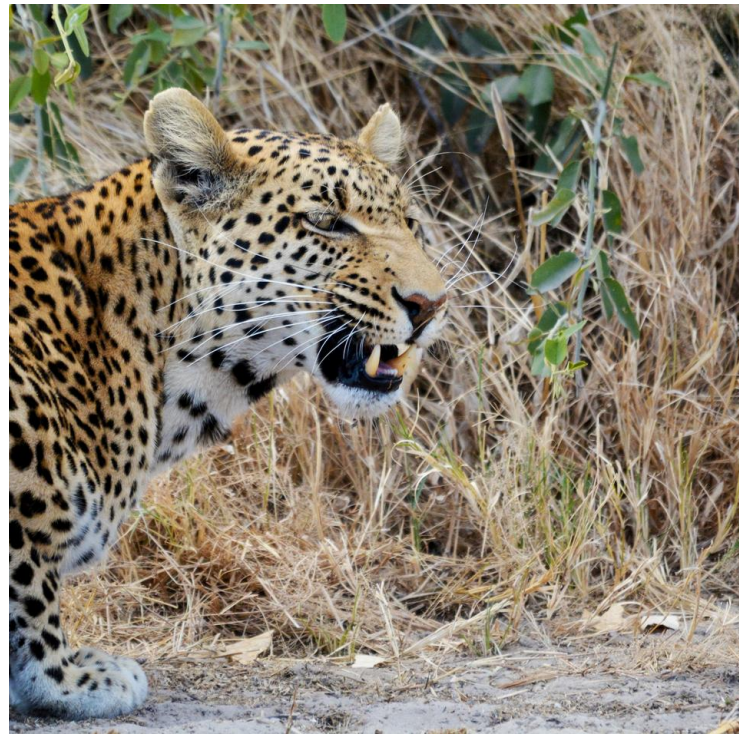
Our amazing team await you on arrival. A short welcome briefing will be done in the main lounge area where after you will be shown to your well-appointed room for relaxation and freshening up. Each room has magnificent outside decks sharing in the amazing 180° views that you enjoyed in the main area.

High Tea is served at 16h00 in the open-plan dining area, where you can continue to enjoy unparalleled views of the Savuti and activity around the waterhole below. You will meet your personal guide and fellow travellers while enjoying the decadent splendour of our home baked cakes and treats. Your guide will prepare your orders for refreshments during your afternoon Sundowner drive which departs around 16h30 traversing our private network of roads. We have a maximum of 6 guests per vehicle for your viewing comfort. Drinks of choice will be enjoyed either at our private hide overlooking our waterhole or at our special Baobab site with magnificent sunset views where photographers as well as nature lovers will experience an incredibly unique landscape. Herds of elephants, buffalo, impala, kudu, giraffe, zebra, roan antelope, spotted & brown hyena, Ghoha pride of lions and leopard are some of the possible sightings around in the area. Not to mention the numerous different bird species and the spectacular Baobab trees that dot the landscape.

You will return to camp around 18h30 to freshen up before dinner. Your guide will meet you at a pre-arranged time at your room to accompany you the Main area for a pre-dinner drink around the bonfire in the Boma and catch up with the other guests and their stories. Dinner is served in the dining area from 19h30 onwards.



Activity Guide



Day 2 - Savuti Excursion

The Savuti Marsh Excursion (Minimum 2-night stay). This is a highlight game experience with seasonal activity taken into account on the exact sequence of the day with guest requirements and preferences. Your day starts early morning, with wake-up at 5am. Your guide will collect you from your room at 5h30 for a superb continental breakfast and coffee and then departing around 6h00 on your day excursion. With various stretching points en-route to the Savuti Marsh, you will stop again for some Tea/Coffee and rusks.

Your professional guide will take you through magnificent ancient landscapes and wildlife areas - to name a few: Harvey's Pan, where so many animals roam daily, Kudu Hills, Quarry hill and rock climbing to get a close view of the Bushmen Rock Paintings, the magnificent Theatre of Twelve Baobab's seeing the Pimple Hills as well as Twin Hills.

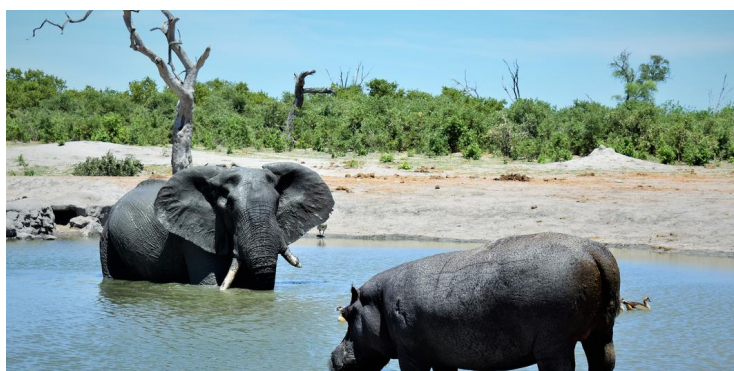
The drive will then continue further showcasing the wonders of the Savuti Marsh with its magnificent herds of Buffalo and Elephant and the Savuti Pride of Lions, in addition to many other species of game and birdlife will be found.

You will return to Ghoja Hills for lunch which is served between 13h00 – 14h00.

After lunch you can relax in the lodge area, have a swim, or enjoy a workout in the gym or have a spa treatment.

We also have Wi-Fi available, letting you connect to loved ones or just catch up on the news

High Tea and Sundowner Game drive will start again at 16h00 that afternoon.





Day 3 – Day of departure

You have a choice of sleeping late, having a hot breakfast and then departing to the airstrip – depending on time of flight, a short game circuit en-route can be done to revisit sights and pans closer to the airstrip.

OR

Getting up early for a drive to the hide for Coffee & rusks and then returning for a hot breakfast and then departing to the airstrip – depending on flight time.

Day 3 – Longer Stay – Day of Options

Option 1:

As there are many amazing areas to the world-renowned Savuti Marsh area.

So, if you are staying longer there are many different areas that can be explored in the Marsh and surrounding Ghoha Hills area. This will be discussed between yourselves and the guide as per the routes and sightings that were enjoyed the previous day.

Option 2:

The take it slow option: you can sleep in and join us later for full English breakfast, after which you relax in the lodge area, swimming or having a wellness treatment and enjoying the comforts and hospitality of our little paradise.

As there is good wi-fi connection available, you can enjoy spending some time updating your photos and catching up with your friends and families online. You can choose to have a late morning game drive which will include a lunch at the hide, as well as a late afternoon game drive.



Option 3:

You can pre-book a scenic helicopter flight (quote available on request).

Early morning/ or afternoon departure from Ghoha Hills to just outside the Ghoha gate where your helicopter adventure awaits you.

Our scenic/ photography flights are a not to miss opportunity. We take the doors off for an even better photographic experience while flying. Moments after departing you will enjoy the breath-taking views seen only from a helicopter - flying in the direction of the Linyanti Swamps.

This is a 30 minute flight where you will then land and enjoy delights from a special picnic basket packed for you – 30 minutes later you will then return back to the Ghoha gate – total excursion time 90 minutes.

