



ANGAMA

SAFARI CAMP

Fact Sheet

'Our purpose is to provide an impeccable safari experience that distils the sophistication of simplicity right down to its very essence. Stare at the fire, listen to the birds, read, take a nap, relax in the red rocker, watch the sun set, cook over the coals; breathe the fresh air, try and count the stars, and share many stories. Our wish is for our guests to experience an overwhelming sense of "this is all mine".'

Nicky Fitzgerald, Co-Founder



ANGAMA.COM

WHAT SETS ANGAMA SAFARI CAMP APART:

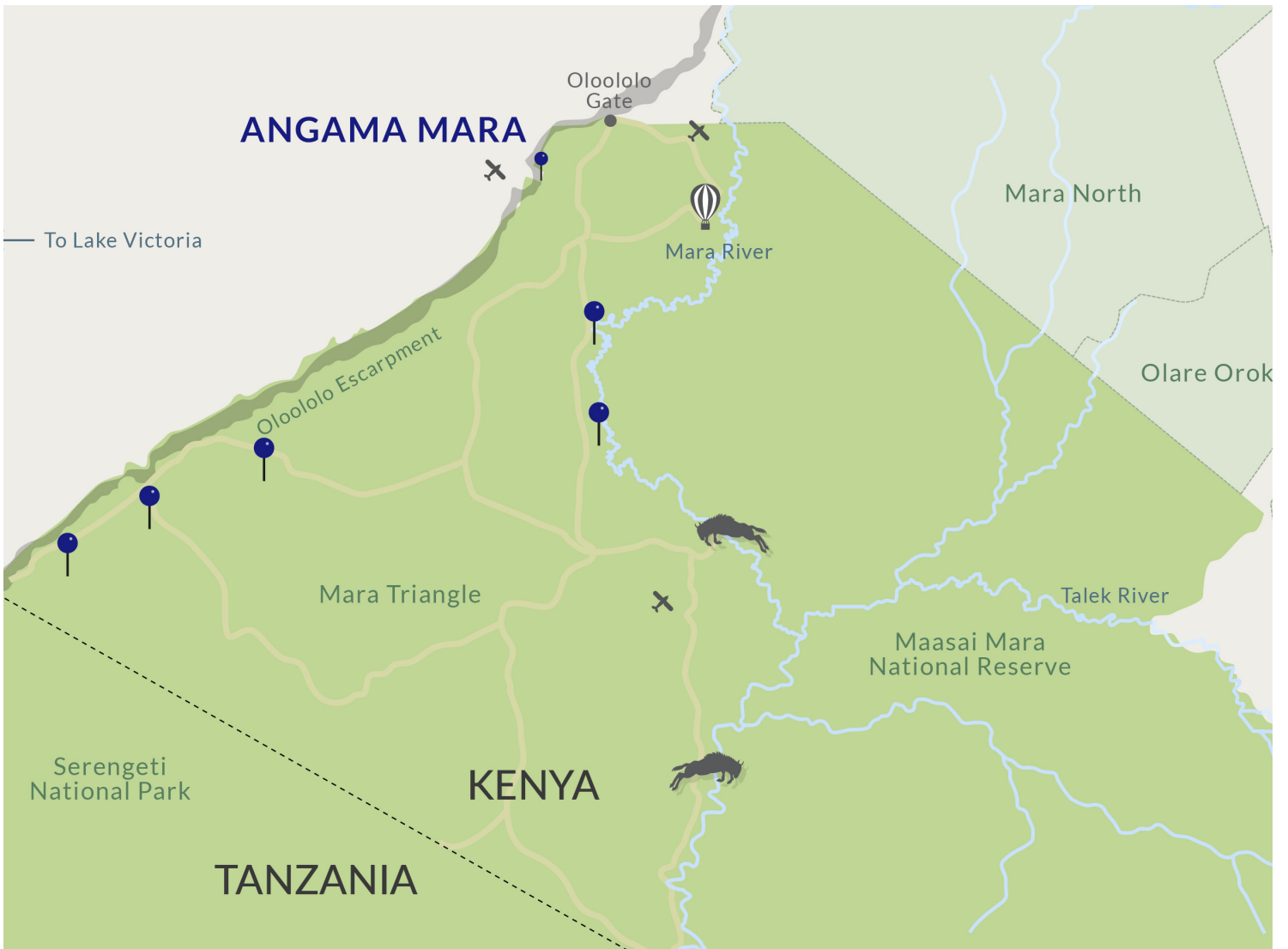
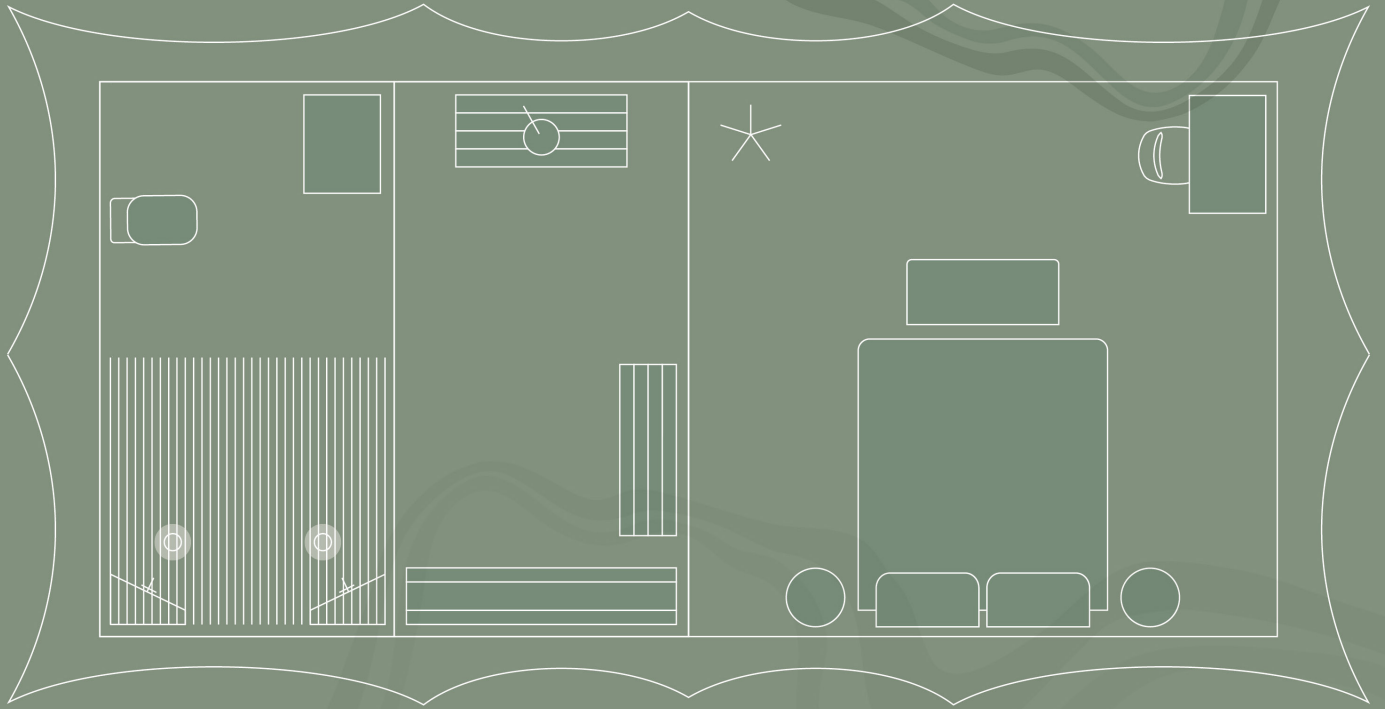
- An intimate, light-footprint movable camp set in the Mara surrounded by astounding year-round wildlife
 - Available per guest per night in Peak Season and as an exclusive-use camp during Standard Season
 - During the Migration Season, be the first at crossing sites and the last to leave so that you don't miss any action
 - Early start game drives from within the park means two hours of extra game drives – increasing game viewing time and close-up experiences
 - Each day's programme is entirely up to the guests with a dedicated Safari Camp team, two Guides and two vehicles
 - Set in the heart of the mega herds during the Great Migration between July and September
 - Pitched on select, private campsites deep in the remote wilderness areas of the Mara
 - A fresh, uncluttered approach to safari camp design maximising the light and views thanks to the Tents' landscape orientation
 - A four-layer tented roof system designed for maximum cross ventilation
 - Interiors that echo the fresh approach to design of Angama Mara with the best of everything but always just the right amount of everything
-

ALL YOU NEED TO KNOW:

- Accommodating up to 8 guests in 4 en-suite Tents
 - Access is easy with a short 45-minute scheduled flight from Nairobi's Wilson Airport to the Mara, followed by a safari from the airfield to the specific site where Angama Safari Camp has been set up.
 - 13-member private staff – a Camp Host, Butler, Chef, two Guides – including two vehicles
 - Safari days will be packed with adventure followed by peaceful evenings under the stars as you share stories and meals around the campfire.
 - When in the Mara Triangle, access to Angama Mara offering guests the best of both: days spent poolside at the lodge, access
-

ANGAMA SAFARI CAMP

THE TENT



HOW TO GET HERE:

- Daily scheduled flights from Nairobi's Wilson Airport to the closest airstrip to Angama Safari Camp's location
- 45-minute flight, depending on routing
- On average a 60-minute safari from the airfield to Camp, depending on game viewing enroute
- Excellent air access from Nairobi and the Serengeti (via Migori in Kenya and Tarime in Tanzania)

CAMP INFORMATION

Number of Tents:	4 Tents
Maximum Number of Guests:	8
Interconnected Family Tents:	N/A (Triple tent set-up option for young children)
Children:	Children of all ages are welcome year round
Check In:	12h00 (early check-in subject to availability)
Check Out:	10h00 (late departure subject to availability)
Security:	24 hour (as the Camp is unfenced guests please not to walk unattended after sunset)
Electricity:	24V DC
Plug Points:	One regular 220V plug point in each Tent and in the Main Tent
Mobile Network:	Limited mobile reception
WiFi:	Yes
Outdoor Dining:	Yes
Credit Cards:	Yes – Visa, Mastercard and American Express
Fitness Room:	Available at Angama Mara when Angama Safari Camp is located in the Mara Triangle
Swimming Pool:	
Safari Shop:	
Photographic Studio:	
Shamba Lunch:	

TENT INFORMATION

Bed Size:	Super king, extra length (double or twin)
Fans:	Standing
Air conditioning:	No
Mosquito Nets:	Yes – on request
Bath:	No
Shower:	Twin Bucket Shower
Single Vanity:	Yes
Separate W/C:	Yes
Safe:	No
Telephone:	No
Emergency Siren:	Yes
Hairdryer:	No (due to power restrictions)
Laundry:	Yes (36-hour turnaround)
Binoculars:	Yes
Size of Tent:	32 sqm (350sqft)

ACTIVITIES

Vehicle:	Two vehicles dedicated to the Camp
Morning Safaris:	Yes
Afternoon Safaris:	Yes
All-day Safaris:	Yes
Night Safaris:	Yes – safaris return to camp by 19h30
Walking Safaris:	Yes – dependant on location of the Camp

Community Visit:	Yes – available on request at an additional charge
Hot-air Ballooning:	Yes – available on request at an additional charge
In-Tent Massage:	Yes – booked minimum of 24 hours in advance

TRAVEL INFORMATION

Climate:	Warm and temperate all year round
Altitude:	1,540m (5,052ft) above sea level
Rainfall:	Long rains: March – May Short rains: November – December Please note: rain generally occurs in brief afternoon thunder showers
Temperature:	Summer temperatures: min 20°C/68°F and max 34°C/94°F Summer: October – April Winter temperatures: min 11°C/52°F and max 25°C/77°C Winter: May - September
Malaria Protection:	Low risk – seek medical advice prior to travel
Yellow Fever:	Many countries require travellers to have a Yellow Fever certificate prior to returning from a visit to Kenya
Currency:	USD, GBP, EUR & Kenyan Shillings
Travel Requirements:	All foreign visitors, including infants and children, who travel to Kenya are required to have an approved Electronic Travel Authorization (eTA) before the start of their journey. The processing fee of USD \$30 is applicable for many nationalities, including the US and UK, payable online at the time of application through the online portal. Please make sure your passport is valid for a minimum of 6 months after arrival in Kenya, with a minimum of three consecutive blank pages

CONTACT

Reservations	enquiry@angama.com
Travel Partners	rates@angama.com



ANGAMA.COM