

Our Commitment




LEMALA
AUTHENTIC CAMPS & LODGES



ADRIFT
UGANDA



LEMALA
WILDWATERS



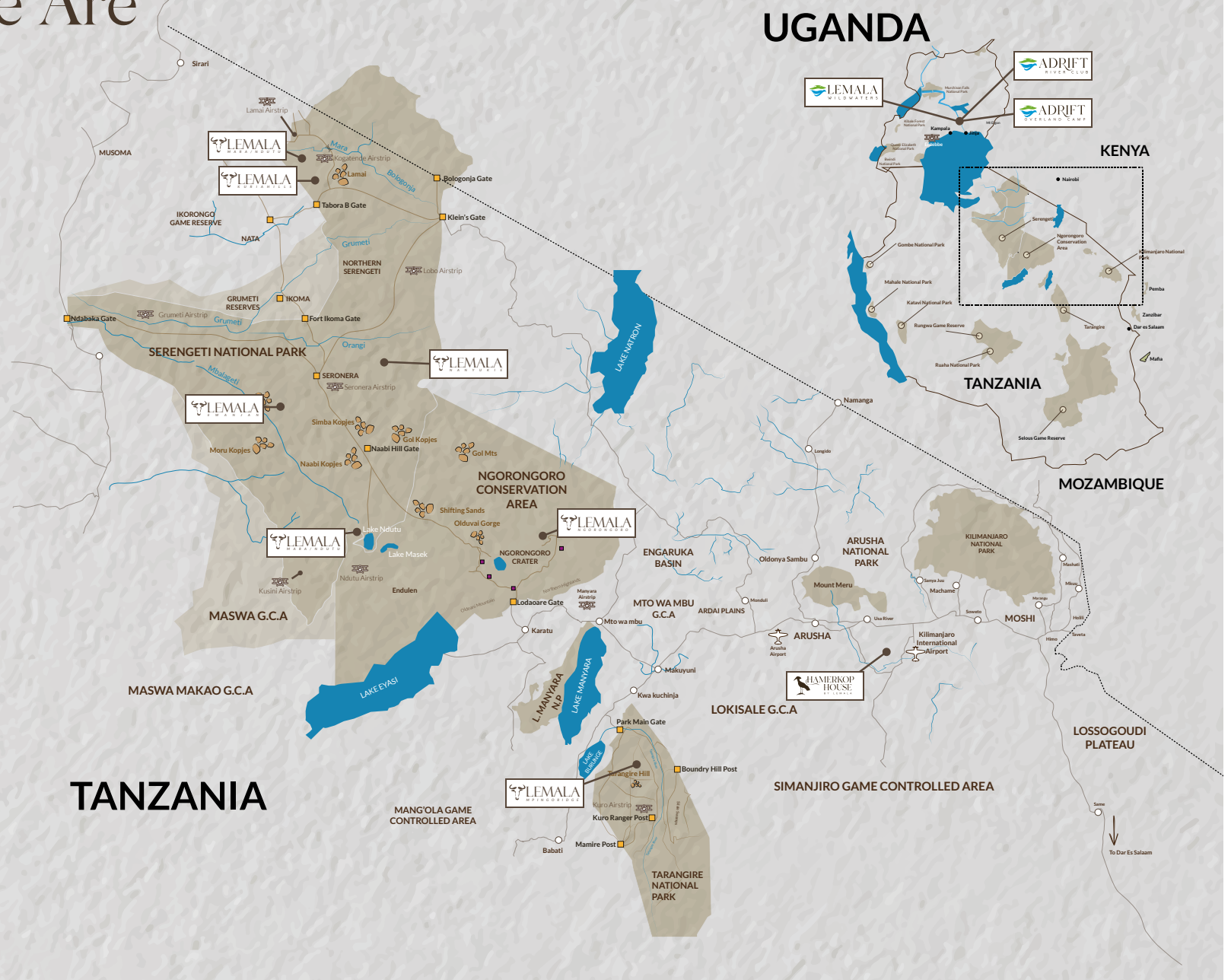
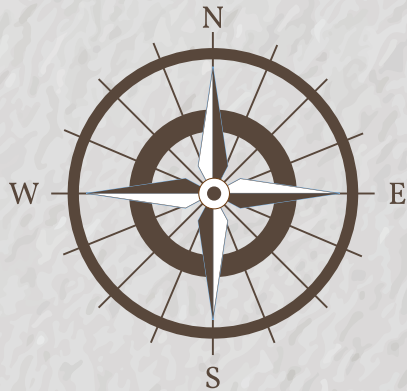
Our Commitment to the Countries, Communities and Environments that surround our Camps, Lodges and Activities

Our Social, Cultural and Environmental responsibility defines us as a Company.

We are proud to share with you some of the ways in which we have remained committed to upholding these values. We support our local communities through employment, sourcing supplies locally and minimising our carbon footprint.



Where We Are



Our Local Purchases

Our Lemala HQ

All goods and fresh produce are packed and sent straight to our properties around Tanzania.

Arusha Central Market

Fresh fruit and vegetables are purchased from the central market and local farms in Arusha Town, supporting all local farmers selling their produce.



Lake Victoria

Our Tanzania staff enjoy a varied menu that includes fresh fish sourced from sustainable fishing practices



Karatu

We purchase our coffee from the Coffee Farm Estates.



Kilimanjaro

Our dairy products originate from the farms on the slopes of Mt Kilimanjaro, purchasing the final product at their shop in Arusha.



Arusha

Dry goods are purchased - working with a company who have sourced their goods from surrounding local suppliers. Only 22% of our dry goods are imported, as certain items are not available in Tanzania.



TANZANIA

Tanga

Source for our dairy products, specifically milk, from a group of dairy farmers who farm in the Tanga Region.



Arusha

Mushrooms are purchased from a local lady, Jane, who has her own mushroom farm.



Arusha

Our Meat/Poultry is farmed locally and purchased from our reliable suppliers.



Dar es Salaam / Arusha

Our curio shops stock items sourced sustainably from within Tanzania these include Maasai beaded items from Karatu, baskets and woven bags from Dar es Salaam, pottery and art from a local Arusha artist.



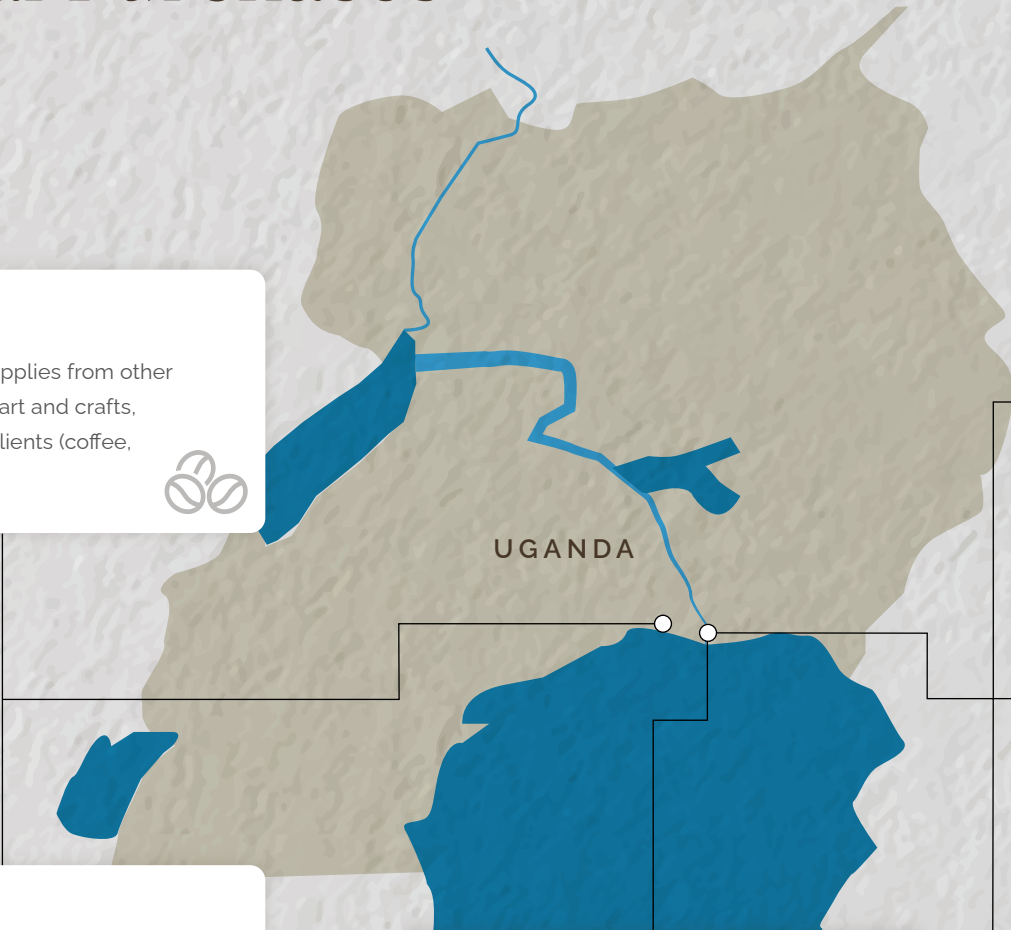
East Coast

We source our fish produce from a local distributor, Joseph, who works with local fishermen. All fish are caught according to individual quota regulations and purchases are shared between the group.



Our Local Purchases

Jinja/Kampala
We get a number of supplies from other surrounding areas like art and crafts, supplies from former clients (coffee, services, etc)



Jinja Central Market
Fresh fruit and vegetables are purchased from the central market and local farms in Jinja and surrounding areas, supporting all local farmers selling their produce'

Kalagala/Kasambya
Fish is outsourced from the Local fishermen in kasambya and kalagala



Jinja/Kampala
Dry goods are purchased from Jinja and a large portion from Kampala, given the nature of dry goods, this can't be out sourced locally.



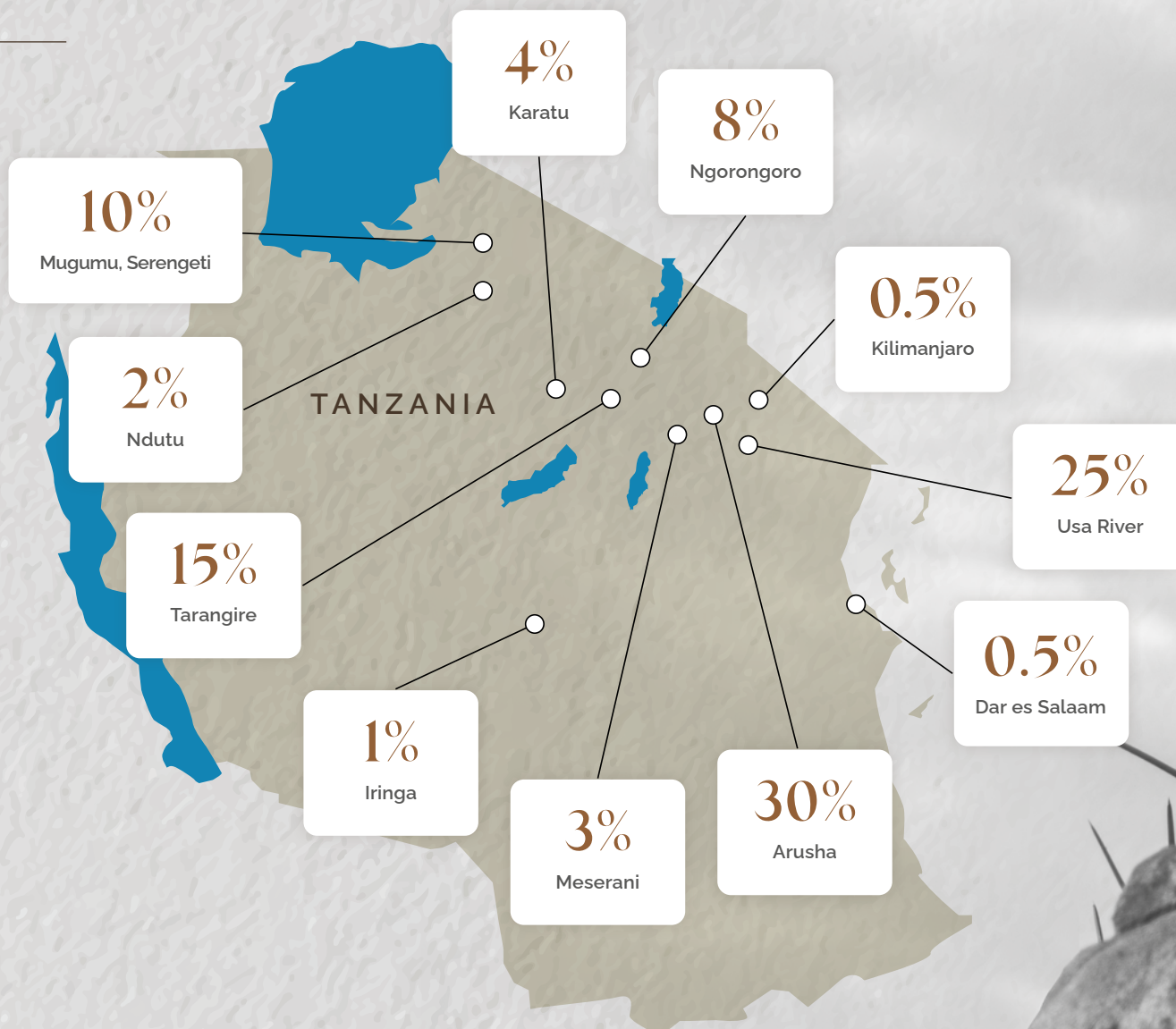
Kalagala/Kasambya
Pineapples are outsourced from local farmers in kalagala and kasambya, this helps to improve livelihood.



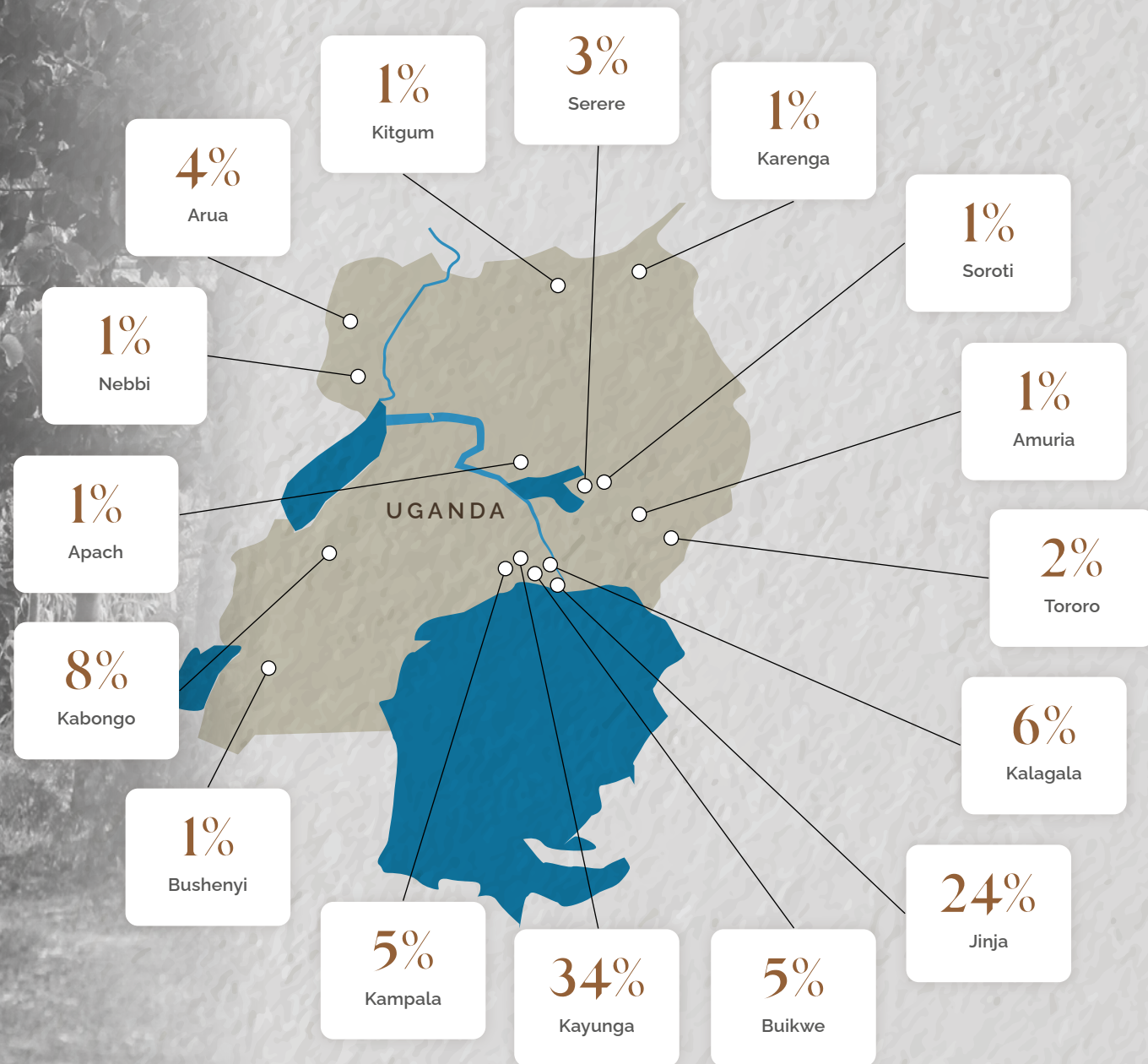
Kalagala/Kasambya
Poultry products like eggs are purchased from the locals in kalagala and kasambya, this has been beneficial in uplifting families around.



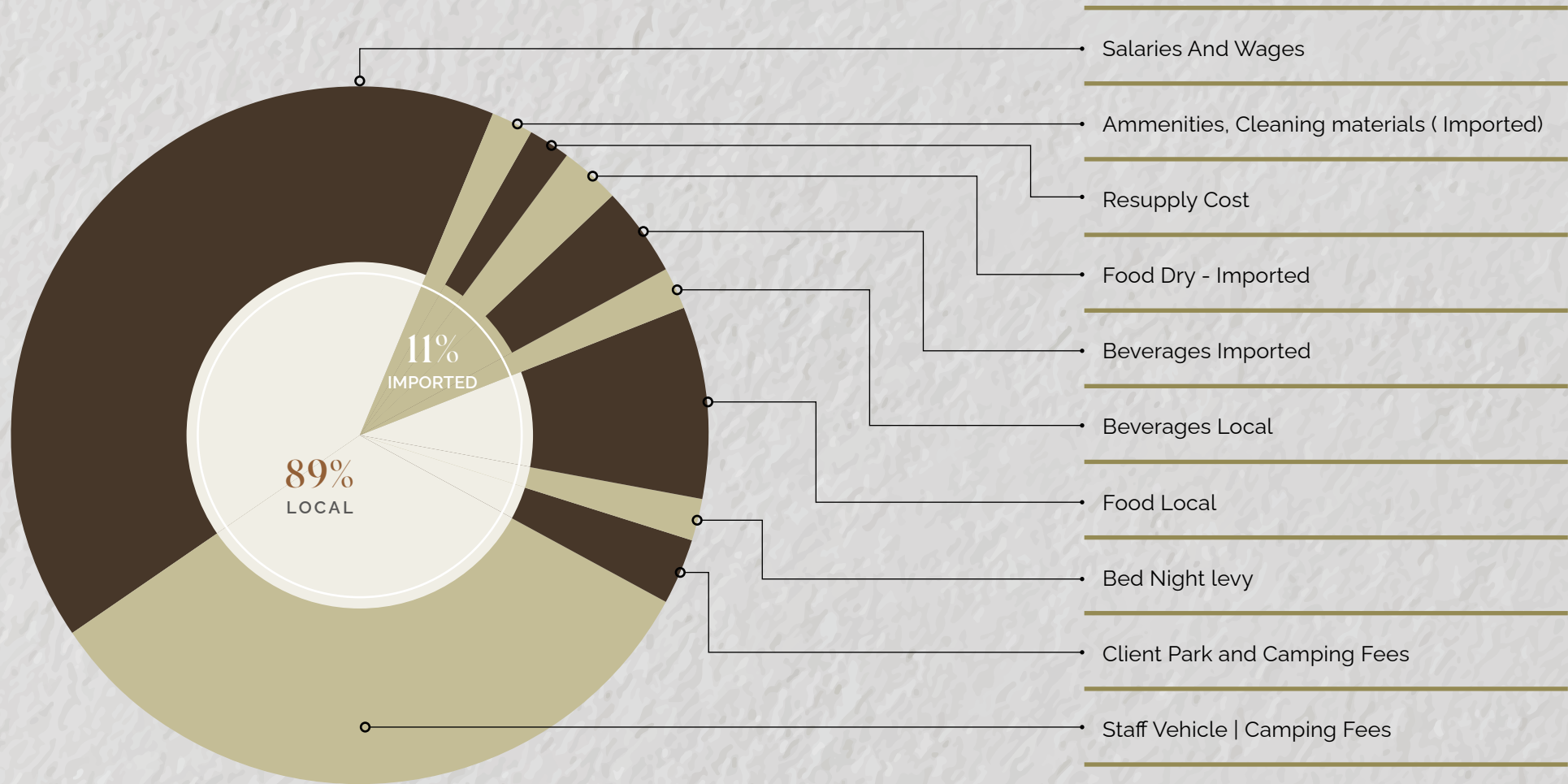
Our Local Staff



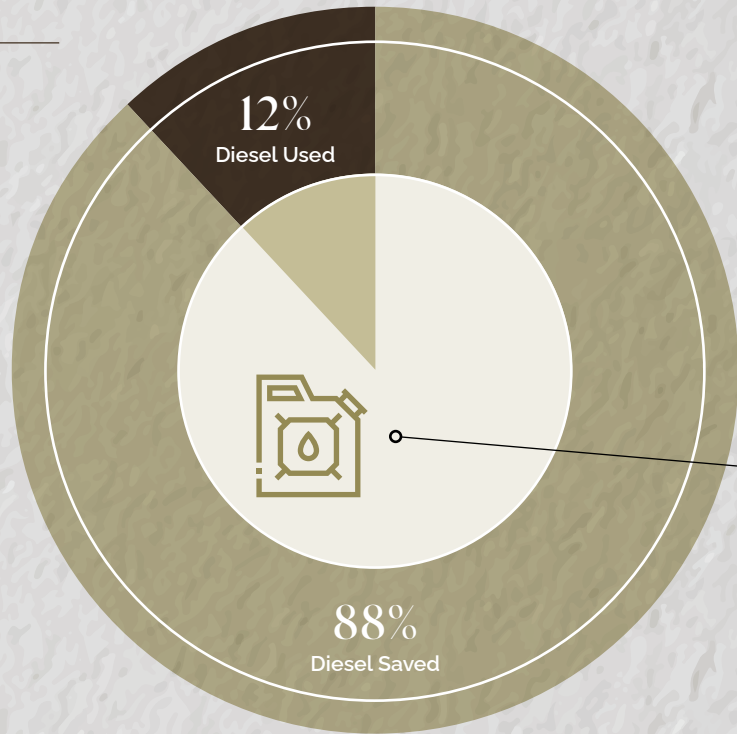
Our Local Staff



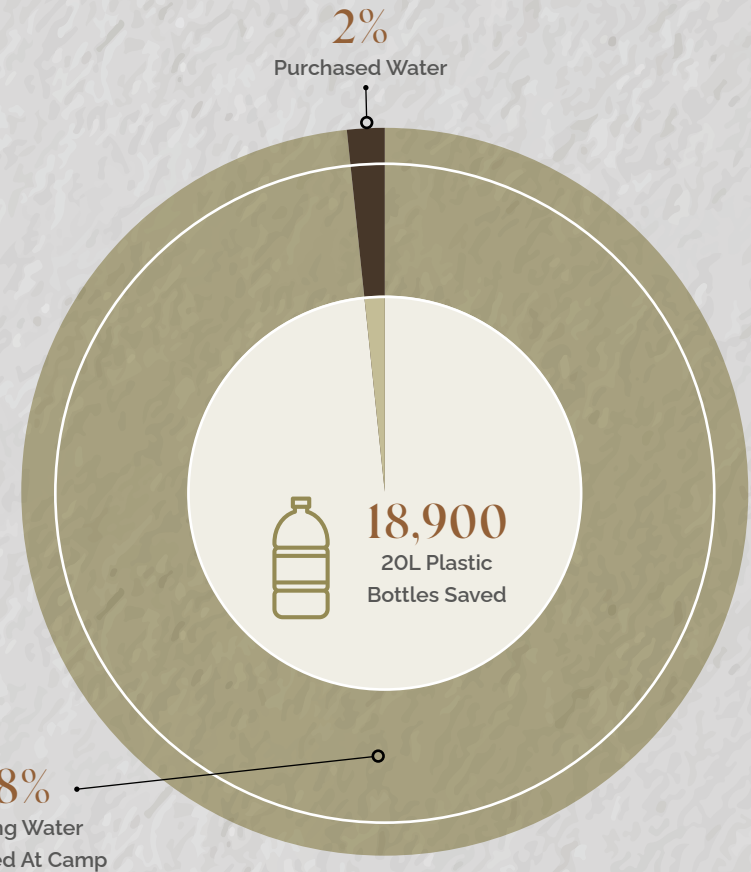
Local Vs Imported Costs



Water & Diesel Costs



Diesel Costs Saved



98%
Drinking Water
Generated At Camp

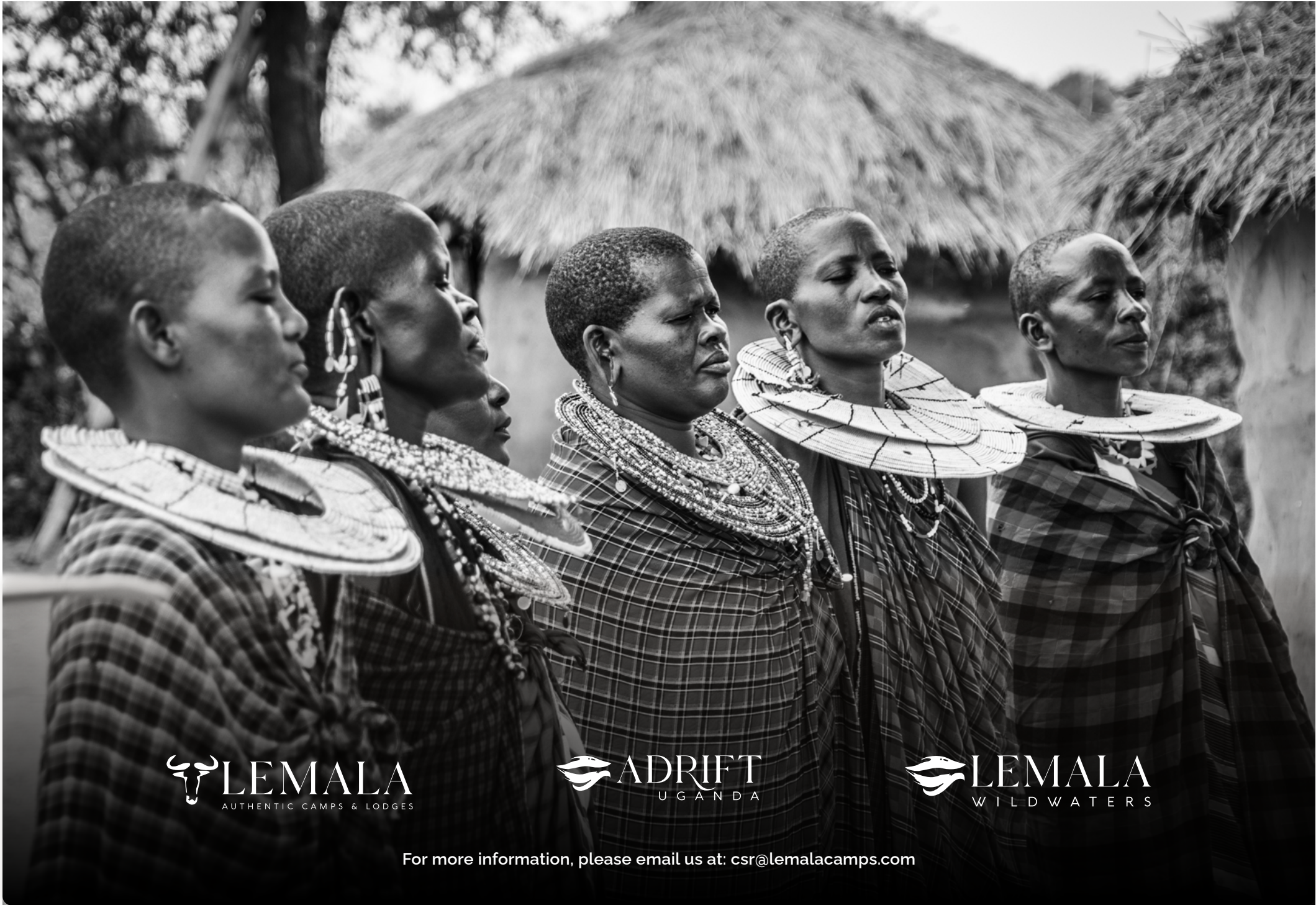
2%
Purchased Water

18,900
20L Plastic
Bottles Saved

Solar plants provide electricity for both the lodges and camps, via inverters. Our small diesel usage is for our back-up generators.

Lemala Uganda properties use hydro power and occasionally use generator in case of power shedding.

Water purification plants located at the properties to ensure safe and clear water is supplied to the clients as well as staff.



 **LEMALA**
AUTHENTIC CAMPS & LODGES

 **ADRIFT**
UGANDA

 **LEMALA**
WILDWATERS

For more information, please email us at: csr@lemalacamps.com