



# VILLA AFRIKANA

★★★★★ GUEST SUITES

# THE BLOEM

★★★★★ GUEST SUITES

---

KNYSNA PARADISE COLLECTION

---



## OUT OF AFRICA | OUT OF THIS WORLD

Knysna, home to Knysna Paradise Collection, is the Garden Route's best known travel destination. The area is one of the most scenic in the world and offers beaches, lakes and lush forests to play in. After being South Africa's favorite town for many years, it has now received international recognition for the gem it is. With a rich history, gourmet restaurants and a variety of art & craft rambles to add, this is also the ideal base for exploring the rest of the Garden Route.

Distance from Cape Town 490.0 km - Port Elizabeth 275.0 km - George Airport 65.0 km

### CLIMATE

**Summer** is warm to hot during the day, wear light clothing, a hat and a wide-spectrum sun-block during the day whilst a light sweater may be required at night.

**Winter** is generally warm during the day, cool to cold at night; wear layers of clothing which are easily removed during the day and a warm coat at night.

### VILLA AFRIKANA Guest Suites & THE BLOEM Guest Suites

Situated just 1 kilometer from **Knysna** city center, Lagoon and **Knysna Waterfront** with its **fine restaurants, exclusive boutiques** and **boat trips** terminals.

**Knysna Golf Club**, the **Pezula** championship golf course & spa; as well as the spectacular course at **Simola** are all within a scenic 15 minutes drive.

With our easy access to the N2 highway, trips to attractions such as the **Knysna Elephant Park, Robberg Peninsula, The Craggs, Birds of Eden, Monkeyland, , Brenton-on-Sea** and **Buffels Bay** can be enjoyed in a flash, day trips to the **Tsitsikamma National Park** and **Klein Karoo** are also a must while staying with us.

*We wish you a most enjoyable experience with us in Knysna  
Ross & Bianca at "Knysna Paradise Collection"*

---

**We'll be pleased to make any arrangement or reservation for you prior to arrival or during your stay**

Last revised in September 2018

Disclaimer: while all efforts have been taken to make this list as accurate as possible we cannot be held responsible for omissions and accuracy of information contained herewith.

1 of 29



VILLA AFRIKANA

★★★★★ GUEST SUITES

THE BLOEM

★★★★★ GUEST SUITES

KNYSNA PARADISE COLLECTION

## | DINING OUT IN KNYSNA |



### LOCAL GASTRONOMY

South Africa's cuisine is exceptionally difficult to define due to the country's great diversity of cultures. Knysna has a vast range of western, eastern and African-style restaurants capable of delivering for all tastes from contemporary to traditional to experimental ones.



### OYSTERS

The Garden Route Coastal Oyster is famous for its fresh, nutty taste, unique to oysters in this area. It can be enjoyed in almost all restaurants in and around Knysna and the Waterfront Area



### WINE

South Africa's wines have achieved world acclaim, with two main wine growing areas including the Northern Cape and Western Cape. Traditional vinifera grapes to the areas are pinotage, cabernet sauvignon, pinot noir, chenin blanc and riesling.

**We are proudly associated with: GRAHAM BECK WINES / JORDAN WINES**

**Graham Beck's** Robertson estate focus on minimal intervention, allowing the authentic essence of the grapes to shine through in the final wine. **The Jordan** philosophy combines the vineyards' natural assets with innovative management, creating a profound expression of terroir.

**We'll be pleased to make any arrangement or reservation for you prior to arrival or during your stay**

Last revised in September 2018

Disclaimer: while all efforts have been taken to make this list as accurate as possible we cannot be held responsible for omissions and accuracy of information contained herewith.



VILLA AFRIKANA

★★★★★ GUEST SUITES

THE BLOEM

★★★★★ GUEST SUITES

KNYSNA PARADISE COLLECTION

## | RECOMMENDED FOR LUNCH |



### \$\$ EAST HEAD CAFÉ'

THE HEADS | 5 KM | 15 MINUTES DRIVE

Tel +27 (0) 44 384 0933 / [www.eastheadcafe.co.za](http://www.eastheadcafe.co.za)

**NO ADVANCE BOOKINGS "FIRST COME – FIRST SERVE"**

**Views:** The Heads

**Décor:** Beach House

**Cuisine:** Sandwiches and lunches like gourmet burgers, fish and chips or daily specials like buttered hake



### \$\$ TOTTIES FARM KITCHEN

RHEENENDAL | KNYSNA | 20.5 KM | 25 MINUETS DRIVE

Tel: 044 389 0092/ [www.tottiesfarmkitchen.co.za](http://www.tottiesfarmkitchen.co.za)

**NO ADVANCE BOOKINGS "FIRST COME – FIRST SERVE"**

At **Totties Farm Kitchen**, you can look forward to a warm welcoming to our restaurant. We offer a large variety of dishes carefully and freshly prepared as well as being fully licensed.



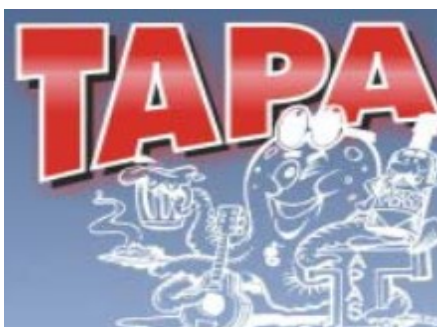
### \$\$ ENRICO BY THE BEACH

THE CRAGS/PLETTENBERG BAY | 35 KM | 40 MINUETS DRIVE

Tel: 044 535 9818 / [www.enricorestaurant.co.za](http://www.enricorestaurant.co.za)

**NO ADVANCE BOOKINGS "FIRST COME – FIRST SERVE"**

"Any closer to the sea and you will get wet"! The terrace is a prime site for watching dolphins and whales. The atmosphere is friendly and homely.



### \$\$ TAPAS & OYSTERS / SPORT BAR

THESEN HARBOR TOWN | KNYSNA

Tel: 044 382 7196 / <http://www.tapasknysna.co.za>

**NO ADVANCE BOOKINGS "FIRST COME – FIRST SERVE"**

Tapas and Oysters is a vibrant, waterside restaurant situated on Thesen Island. We serve a wide selection of Spanish, Mediterranean and South African Tapas, in addition to our Tapas menu we also offer oysters (fresh from our oyster tanks) and fresh seafood dishes.

**We'll be pleased to make any arrangement or reservation for you prior to arrival or during your stay**

Last revised in September 2018

Disclaimer: while all efforts have been taken to make this list as accurate as possible we cannot be held responsible for omissions and accuracy of information contained herewith.





VILLA AFRIKANA

★★★★★ GUEST SUITES

THE BLOEM

★★★★★ GUEST SUITES

KNYSNA PARADISE COLLECTION

## | RECOMMENDED FOR DINNER |



### \$\$ CAFFE' MARIO'S KNYSNA QUAYS | KNYSNA

Tel: 044 382 7250

#### ADVANCE BOOKINGS ESSENTIAL

**When to Go:** For an unpretentious and relaxing evening

**Views:** Overlooking the Waterfront Marina

**Décor:** Contemporary Italian

**Cuisine:** Pasta, Thin Crust Pizza – Veal Dishes

**Highs:** Stays open late - Great value for money



### \$\$\$ JJ.S KNYSNA QUAYS | KNYSNA

Tel: 044 382 3359 / [www.jjsrestaurant.co.za](http://www.jjsrestaurant.co.za)

#### ADVANCE BOOKINGS ESSENTIAL

**When to Go:** For that very good dinner.

**Views:** Overlooking the Waterfront Marina.

**Décor:** romantic quayside location.

**Cuisine:** seafood, tempting salads, Game and Beef



### \$\$\$ PROJECT BAR / SIROCCO RESTAURANT THESEN HARBOR TOWN | KNYSNA

Tel: 044 382 4874 / [www.sirocco.co.za](http://www.sirocco.co.za)

The "Project Bar" and "Sirocco" are situated on the water's edge of the Knysna's Lagoon. The Project bar serves cocktails and after dinner drinks. Sirocco is a vibey lunch and dinner time venue, a meeting place for those who appreciate relaxed sophistication, cutting edge design, friendly service and great food.



### \$\$ 34 DEGREES SOUTH KNYSNA QUAYS | KNYSNA

Tel: 044 3827331 / [www.34-south.com](http://www.34-south.com)

**When to Go:** A VERY casual evening out.

**Views:** Overlooking the Waterfront Marina

**Cuisine:** Sushi, Fish, Seafood, Meat

**Highs:** Well stock wine cellar, menu choices to suit all tastes

**We'll be pleased to make any arrangement or reservation for you prior to arrival or during your stay**

Last revised in September 2018

Disclaimer: while all efforts have been taken to make this list as accurate as possible we cannot be held responsible for omissions and accuracy of information contained herewith.



VILLA AFRIKANA

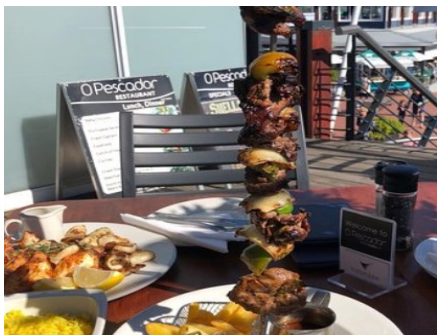
★★★★★ GUEST SUITES

THE BLOEM

★★★★★ GUEST SUITES

KNYSNA PARADISE COLLECTION

## I RECOMMENDED FOR DINNER I continued



### \$\$\$ O'PESCADOR RESTAURANT KNYSNA QUAYS I KNYSNA

Tel: 044 382 3476

#### ADVANCE BOOKINGS ESSENTIAL

Mediterranean Portuguese cuisine. Ambience is warm, and friendly. You will find the freshest fish which is caught daily and a variety of steaks, chicken and seafood dishes including prawns, crayfish, oysters.



### \$\$ ANCHORAGE RESTAURANT GREY STREET I KNYSNA

Tel: 044 382 2230 / [www.anchoragerestaurant.co.za](http://www.anchoragerestaurant.co.za)

#### ADVANCE BOOKINGS ESSENTIAL

The anchorage is a traditional seafood restaurant situated in the heart of Knysna. The Anchorage offers a selection of fine fresh fish, Knysna Oysters, Shellfish, Seafood platters as well as sizzling beef and venison



### \$\$ FRESHLINE FISHERIES CORNER LONG & WATERFRONT DRIVE I KNYSNA

Tel: 044 382 3131

#### ADVANCE BOOKINGS ESSENTIAL

(closed on Sundays)

Enjoy a wide selection of seafood dishes on our beach! This **OUTDOOR BEACH RESTAURANT** is perfect for casual meal with friends and family. **BRING YOUR OWN WINE**



### \$\$ ASAMI'S KNYSNA QUAYS I KNYSNA

Tel: 064 988 0450 / [www.asami.co.za](http://www.asami.co.za)

The Asami House Restaurant in Knysna is a Sushi and Asian Cuisine Restaurant that offers you the finest Sushi and Asian food in the Garden Route. If you feel like some salmon roses or a thai curry, don't hesitate to visit us.

We'll be pleased to make any arrangement or reservation for you prior to arrival or during your stay

Last revised in September 2018

Disclaimer: while all efforts have been taken to make this list as accurate as possible we cannot be held responsible for omissions and accuracy of information contained herewith.



VILLA AFRIKANA

★★★★★ GUEST SUITES

THE BLOEM

★★★★★ GUEST SUITES

KNYSNA PARADISE COLLECTION

## I RECOMMENDED FOR DINNER I continued



### \$\$\$ PEMBREY'S

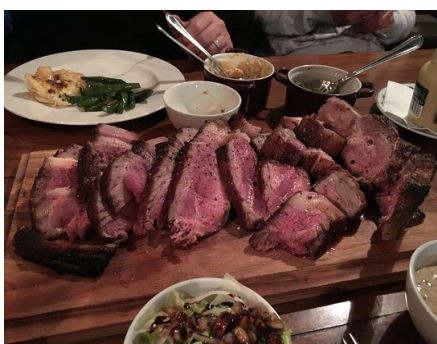
BELVIDERE | KNYSNA | 3 KM | 20 MINUTES DRIVE

Tel: 044 3860005 / [www.pembreys.co.za](http://www.pembreys.co.za)

**ADVANCE BOOKINGS ESSENTIAL**

(closed on Sundays and Mondays)

The well-balanced menu is chalked up on a blackboard and changes according to the seasons. The dishes are cooked with care and the simple presentation belies the often complex cooking of the sauces.



### \$\$\$ LE MAQUIS by Cathy & Remy

(EX DIE GIETER CATHY & REMY)

GREY STREET | KNYSNA

Tel: 08225 778 52 / [www.lemaquis.co.za](http://www.lemaquis.co.za)

**ADVANCE BOOKINGS ESSENTIAL**

(closed on Sundays & Mondays)

**When to Go:** For that French cuisine dinner.

**Décor:** Bistro style,

**Cuisine:** Lamb and Beef



### \$\$\$ OLIVE TREE RESTAURANT

MAIN ROAD | KNYSNA

Tel: 044 382 5867

**ADVANCE BOOKINGS ESSENTIAL**

(closed on Sundays and Public Holidays)

**When to Go:** For a warm and inviting night out.

**Views:** No views

**Décor:** Cozy and Charming

**Cuisine:** Bistro style, a la carte, vegetarian dishes



### \$\$ "BAZALA" Positively South African

KNYSNA QUAYS | KNYSNA

Tel: 044 382 1693

South African specialties such as Oxtail, Lamb Potjie, Bobotie, Roosterkoeke, Malva krimparkies to die for and yummy Apple crumble. Vegetarian Friendly, Vegan Options, Gluten Free Options

**We'll be pleased to make any arrangement or reservation for you prior to arrival or during your stay**

Last revised in September 2018

Disclaimer: while all efforts have been taken to make this list as accurate as possible we cannot be held responsible for omissions and accuracy of information contained herewith.





VILLA AFRIKANA

★★★★★ GUEST SUITES

THE BLOEM

★★★★★ GUEST SUITES

KNYSNA PARADISE COLLECTION

## | TAKE AWAYS | (menus available from your Hosts)



**THEY DELIVER**

**044 382 0655**

Family business that serves and delivers delicious authentic Italian food. NOTE: 10% of the value of the order will be added which goes towards the driver effort

**Monday to Saturday 9:00-21:00**



**THEY DELIVER**

**044 382 2073**

**Weekdays & Sundays: 10:00-21:30 | Saturdays: 10:00-22:30**



**THEY DELIVER**

**044 382 0312 / 3**

**Weekdays & Sundays: 10:00-21:30 | Saturdays: 10:00-22:30**

## | COUNTRY MARKETS |



**WILD OATS COMMUNITY FARMER'S MARKET**

**SEDGEFIELD | 10 KM | 20 MINUTES DRIVE**

**EVERY SATURDAY MORNING THROUGHOUT THE YEAR (from 7:30-11:30 summer; 8:00-11:30 winter) COME RAIN OR SHINE. AN EXCITING AND SIGNIFICANT LANDMARK IN THE HEART OF SOUTH AFRICA'S GARDEN ROUTE.**



**KNYSNA FRIDAY NIGHT MARKET**

**WELDBEDADACHT | 2 KM | 10 MINUTES DRIVE**

This Friday night market is predominantly a supper-market from 16:00 to 20:00 and concentrates on food and drinks. Expect live entertainment. **(September to April)**

**We'll be pleased to make any arrangement or reservation for you prior to arrival or during your stay**

Last revised in September 2018

Disclaimer: while all efforts have been taken to make this list as accurate as possible we cannot be held responsible for omissions and accuracy of information contained herewith.



VILLA AFRIKANA

★★★★★ GUEST SUITES

THE BLOEM

★★★★★ GUEST SUITES

KNYSNA PARADISE COLLECTION

## | WELL BEING |



### LE SPA TRANQUILLE THESEN HARBOR TOWN | KNYNSNA

Tel: 044 302 5727/8 / [www.lespa.co.za](http://www.lespa.co.za)

Le Spa Tranquille is situated on the edge of the scenic Knysna Lagoon. All therapy rooms have picturesque views of the lagoon which, combined with our therapists expert touch, guarantee a soothing experience.

**Up to 25% reduced rates for our Guests at the following popular SPAs:**



### PEZULA SPA & GYM PEZULA RESORT HOTEL | 5 KM | 25 MINUTES DRIVE

Tel: 044 302 3333

Transport yourself to another world, a calm sanctuary that reflects the soul of Africa with its natural elements and textures at the opulent Pezula Spa.



### SIMOLA HOTEL & SPA SIMOLA ESTATE | 2 KM | 15 MINUTES DRIVE

[www.simolaestate.co.za](http://www.simolaestate.co.za) / Tel: 044 302 9660

From its vantage point high above Knysna, Simola Spa and Gym boasts unparalleled views. Even the sauna, with its glass panels, lets in the calming effects of nature. The indoor heated pool is enclosed by a curving glass wall.

**We'll be pleased to make any arrangement or reservation for you prior to arrival or during your stay**

Last revised in September 2018

Disclaimer: while all efforts have been taken to make this list as accurate as possible we cannot be held responsible for omissions and accuracy of information contained herewith.





VILLA AFRIKANA

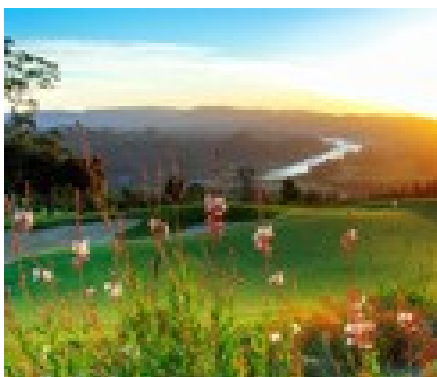
★★★★★ GUEST SUITES

THE BLOEM

★★★★★ GUEST SUITES

KNYSNA PARADISE COLLECTION

## | GOLF COURSES |



Simola

GOLF COURSE

SIMOLA ESTATE | 2 Km | 15 MINUTES DRIVE

[www.simolaestate.co.za](http://www.simolaestate.co.za) | Tel: 044 302 9677

**Designed by:** Jack Nicklaus  
**Hole:** 18 | **Par:** 72  
**Greens Grass:** Bent Grass  
**Length:** 5644m

Keeping your head down at Simola can be a challenge; simply because the views around the course are awe-inspiring, it is clear to see why Simola is one of South Africa's premier golfing destinations.



PEZULA

GOLF COURSE

PEZULA ESTATE | KNYSNA | 5 KM | 25 MINUTES DRIVE

[www.pezulagolf.com](http://www.pezulagolf.com) | Tel: 044 302 5300

**Designed by:** Ron Fream  
**Hole:** 18 | **Par:** 72  
**Green: Grass:** Bent Grass  
**Length:** 6281m

The Championship Golf Course lies high above the Indian Ocean and the vast Knysna lagoon, a sweeping spectacle of fairways and greens rolling through the pristine indigenous landscape.



GOOSE VALLEY

GOLF COURSE

GOOSE VALLEY | PLETTENBERG | 30 KM | 40 MINUTES DRIVE

[www.goosevalleygolfclub.com](http://www.goosevalleygolfclub.com) | Tel: 044 533 5082

**Designed by:** Gary Player  
**Hole:** 18 - **Par:** 72  
**Green: Grass:** Bent Grass  
**Length:** 6001m

The Goose Valley Golf Club is situated in pristine surroundings bordering on the Keurbooms Lagoon in Plettenberg Bay. Natural fynbos and bird life add a special dimension to your golfing experience.

**We'll be pleased to make any arrangement or reservation for you prior to arrival or during your stay**

Last revised in September 2018

Disclaimer: while all efforts have been taken to make this list as accurate as possible we cannot be held responsible for omissions and accuracy of information contained herewith.



VILLA AFRIKANA

★★★★★ GUEST SUITES

THE BLOEM

★★★★★ GUEST SUITES

KNYSNA PARADISE COLLECTION

## I LAGOON CRUISES I



**SPRINGTIDE CHARTERS**  
**KNYSNA WATERFRONT I KNYNSNA**  
[www.springtide.co.za](http://www.springtide.co.za) | TEL: 044 382 0321

The Outeniqua is a 50ft mono-hull, with a beam of 4m & interior clearance of 1.9m. She was hand built by owner/skipper, Stephan Pepler. The only mono-hull that sails through the majestic sandstone cliffs of the Knysna Heads. *(Weather Permitting)*

**Sunset Cruise:** Experience the beauty of the Knysna Lagoon  
**Operational:** All Year / **Duration:** 2.5 hours / **Age Restriction:** None  
*Tours & Times are subject to Springtide Terms & Conditions*



PERMITTED WHALE WATCHING  
KNYSNA - GARDEN ROUTE - SOUTH AFRICA

**THESEN HARBOUR TOWN I KNYNSNA**  
[www.oceanodyssey.co.za](http://www.oceanodyssey.co.za) | TEL: 044 382 0321

From close encounter whale to dolphins, birds or seals watching cruises, we've got it all. Or if you would rather just relax while feeling the wind in your hair and the warm African sun on your skin, then why not join us for one of our shorter cruises through the picturesque Knysna Lagoon

**Close Wale Encounter (JULY to NOVEMBER).** Official whale watching permit holder in the Knysna area. **Duration 2 HRS**

**Ocean Eco & Lagoon Tours** (End of December to June) **Duration; 1.5 HRS**  
*Tours & Times are subject to Ocean Odyssey Terms & Conditions*

**We'll be pleased to make any arrangement or reservation for you prior to arrival or during your stay**

*Last revised in September 2018*

*Disclaimer: while all efforts have been taken to make this list as accurate as possible we cannot be held responsible for omissions and accuracy of information contained herewith.*



VILLA AFRIKANA

★★★★★ GUEST SUITES

THE BLOEM

★★★★★ GUEST SUITES

KNYSNA PARADISE COLLECTION



**KNYSNA RIB ADVENTURE / KNYSNA WATERFRONT**

Tel: 076 393 0197 / [www.knysnaribadventures.co.za](http://www.knysnaribadventures.co.za)

Enjoy a high speed power flip from the Waterfront through the Heads; explore coastal caves and speed between rocks & swells. **"Quick Flip" Rib Adventure:** An exciting 35-40 minute adventure to the Knysna Heads & back. If conditions permit we exit the Knysna Heads and explore coastline caves and sea life.

# Featherbed

Tel: 044382 1693 / [www.knysnafeatherbed.com](http://www.knysnafeatherbed.com)



**"HEADS EXPLORER"**  
**KNYSNA WATERFRONT**

This catamaran is for the adventurous and romantic, creating another unforgettable experience, sailing on the Knysna Lagoon to the Heads and beyond (ocean conditions permitting). Sail in style on the Knysna Lagoon to the famous Heads.

**Daily Departures / Duration:** 2.1/2 - hour



**"JOHN BENN"**  
**KNYSNA WATERFRONT**

Double-decker boat offering daily Lagoon cruises to the Knysna Heads. Cruise to the Knysna Heads, on a boat steeped in history. Sundowner cruises with fresh Knysna oysters and local beer or sparkling wine. Fully enclosed.

**Daily Departures / Duration:** 1.1/2 - hour

**We'll be pleased to make any arrangement or reservation for you prior to arrival or during your stay**

Last revised in September 2018

Disclaimer: while all efforts have been taken to make this list as accurate as possible we cannot be held responsible for omissions and accuracy of information contained herewith.





VILLA AFRIKANA

★★★★★ GUEST SUITES

THE BLOEM

★★★★★ GUEST SUITES

KNYSNA PARADISE COLLECTION

## | SOFT ACTIVITIES |



### ELECTRIC BIKES

THESEN HARBOUR TOWN | KNYSNA

044 382 0321 / [www.oceanodyssey.co.za](http://www.oceanodyssey.co.za)

GO NOW and discover Knysna by means of our new and exciting electric bikes. These awesome self-powered bikes make exploring simple and stress-free by avoiding traffic and searching for parking. The electric bikes are easy to use and no particular level of fitness is required.



### SUP "Stand-Up Paddling"

THESEN HARBOUR TOWN | KNYSNA

044 382 0321 / [www.oceanodyssey.co.za](http://www.oceanodyssey.co.za)

Explore the waterways of Thesen Island with the world's fastest growing watersport, it is easy and fun. The calm waters of Thesen Island are ideal for beginners and the many inlets and coves are perfect for the more adventurous or experienced paddlers.



### OFF THE R340 UPLANDS | PLETTENBERGS BAY

45 KM | 1.15 HOUR DRIVE

[www.plettenbergbaygamereserve.co.za](http://www.plettenbergbaygamereserve.co.za) / Tel: 044 281 1051

It offers an exciting safari experience with an excellent chance of spotting four of Africa's Big Five - buffalo, lion, leopard and rhino.

**Game Drives:** Daily / **Duration:** 2 to 2.5 hours

*Tours & Times are subject to Plettenberg Game Reserve Terms & Conditions*

**We'll be pleased to make any arrangement or reservation for you prior to arrival or during your stay**

Last revised in September 2018

Disclaimer: while all efforts have been taken to make this list as accurate as possible we cannot be held responsible for omissions and accuracy of information contained herewith.



VILLA AFRIKANA

★★★★★ GUEST SUITES

THE BLOEM

★★★★★ GUEST SUITES

KNYSNA PARADISE COLLECTION

## TONY COOK ADVENTURES

SLEEP WHEN YOU'RE DEAD!

KNYSNA WATERFRONT | KNYNSNA

Tel: 082 783 8392 / [www.tonycookadventures.co.za](http://www.tonycookadventures.co.za)



### KNYSNA FOREST TOURS

ESCORTED HIKING, WALKING AND  
CANOING TOURS

Discover the best trails and waterways in the Knysna area. We collect you from your accommodation.



### KNYSNA MOUNTAIN BIKE TOURS

ESCORTED MOUNTAIN BIKING TOURS

Transportation included. All levels of fitness are catered. Bikes are provided and included in rates.



### RIVERDECK ACTIVITIES & DECK RESTAURANT

CANOING | FISHING | BUFFELS BAY TURN OFF | 10 KM | 15 MINUTES DRIVE

Tel: 073 488 6341. / [www.riverdeckrestaurant.co.za/activities.html](http://www.riverdeckrestaurant.co.za/activities.html)

Welcome to **RiverDeck Activities** where there is an abundant variety of good, natural fun for everyone. Take the day to meander and explore the river bends and lush surrounding green valley. Try our special **Catch and Release Fishing** spots.

A large collection of **canoes**, **hydro-bikes** and **paddle boats** for hire awaits you.

We'll be pleased to make any arrangement or reservation for you prior to arrival or during your stay

Last revised in September 2018

Disclaimer: while all efforts have been taken to make this list as accurate as possible we cannot be held responsible for omissions and accuracy of information contained herewith.





VILLA AFRIKANA

★★★★★ GUEST SUITES

THE BLOEM

★★★★★ GUEST SUITES

KNYSNA PARADISE COLLECTION



### EMZINI TOWNSHIP TOURS / ESCORTED DAILY TOWNSHIP TOURS | KNYSNA

Tel: 082 338 6289 / [www.emzinitours.co.za](http://www.emzinitours.co.za)

On the face of it, townships seem merely to be sprawling, chaotic zones. This is to some extent true, but make a point to delve deeper and you will recognize that they are also places of great strength, courage, song and dance and love. We provide you with a glimpse of this reality, offering insight into the areas that people often shy away from.



### BENNIE'S TOURS & TAXI

#### DAILY TOURS & TRANSPORT IN AND AROUND THE GARDEN ROUTE AND KNYSNA

Tel: 083 728 5181 / [www.benniestours.co.za](http://www.benniestours.co.za)

From day tour trips around the garden route to fetching you from and back to the airport to shuttle you to your favorite restaurant in Knysna



### TSITSIKAMMA CANOPY TOUR

#### STORM RIVER VILLAGE | 70 KM | 1.1/2 HOUR DRIVE

Tel: 042 281 1836 / [www.tsitsikammacanopytour.co.za](http://www.tsitsikammacanopytour.co.za)

The **Canopy Tour** takes place in the magnificent Tsitsikamma rainforest. Many of the platforms are built around giant Yellowwood trees that are up to 700 years old!

**We'll be pleased to make any arrangement or reservation for you prior to arrival or during your stay**

Last revised in September 2018

Disclaimer: while all efforts have been taken to make this list as accurate as possible we cannot be held responsible for omissions and accuracy of information contained herewith.





VILLA AFRIKANA

★★★★★ GUEST SUITES

THE BLOEM

★★★★★ GUEST SUITES

KNYSNA PARADISE COLLECTION

## | NOT SO SOFT ACTIVITIES |



**FACE ANDRENALIN / WORLD'S HIGHEST COMMERCIAL BUNGY JUMP / N2 BLOUKRANS BRIDGE | TISTSIKAMMA NATIONAL PARK / 60 KM | 50 MINUTES DRIVE**

**Tel: 042 2811458 / [www.faceadrenalin.com](http://www.faceadrenalin.com)**

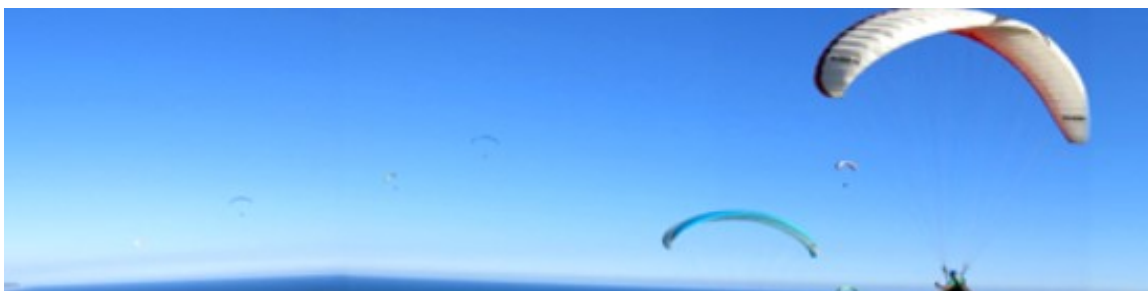
Bloukrans is the World's Highest Commercial Bungee Jump at a whopping 216 m high!



**SKY DIVING PLETT / PLETTENBERG BAY AIRPORT / 35 KM | 45 MINUTES DRIVE**

**Tel: 082 905 7440 / [www.skydiveplett.com](http://www.skydiveplett.com)**

Enjoy a 20 minute plane flight to 10,000 feet, over the Knysna forests and Plettenberg Bay coastline. Experience the rush of a 35 second free fall at 200KPH!



**BORN TO FLY | PARAGLIDING / GEORGE | 60 KM | 1HR DRIVE**

**Tel: 072 199 0622/ [www.dolphinparagliding.co.za](http://www.dolphinparagliding.co.za)**

Based in the heart of the **Garden Route, South Africa**, Dolphin Paragliding offers tours, as well as guiding and equipment rental to ensure only the best flights.

**We'll be pleased to make any arrangement or reservation for you prior to arrival or during your stay**

Last revised in September 2018

Disclaimer: while all efforts have been taken to make this list as accurate as possible we cannot be held responsible for omissions and accuracy of information contained herewith.



VILLA AFRIKANA

★★★★★ GUEST SUITES

THE BLOEM

★★★★★ GUEST SUITES

KNYSNA PARADISE COLLECTION

## | ATTRACTIONS |



**HIGHLY RECCOMENED**

**KNYSNA ELEPHANT PARK**

**WORLD'S MOST SOUTHERN ELEPHANTS | HAKERVILLE | 25 KM | 30 MINUTES DRIVE**

**Tel: 44 532 7732 / [www.knysnaelephantpark.co.za](http://www.knysnaelephantpark.co.za)**

Learn about the sad and mystical story of the Knysna Elephants. The park offers a rare and exciting opportunity to get close to these gentle giants, who live in a controlled, free range environment



**HIGHLY RECCOMENDED**

**TENIKWA WILDLIFE AWARENESS CENTRE**

**THE CRAGS | 40 KM | 50 MINUTES DRIVE**

**Tel: 44 5348170 / [www.tenikwa.co.za](http://www.tenikwa.co.za)**

Tenikwa Wildlife Awareness Centre offers a truly unique Wildcat Experience. Guests are taken on a guided tour to meet captive-bred furry felines, living in a semi-natural environment. So close, you can hear them purr.....

**We'll be pleased to make any arrangement or reservation for you prior to arrival or during your stay**

Last revised in September 2018

Disclaimer: while all efforts have been taken to make this list as accurate as possible we cannot be held responsible for omissions and accuracy of information contained herewith.





VILLA AFRIKANA

★★★★★ GUEST SUITES

THE BLOEM

★★★★★ GUEST SUITES

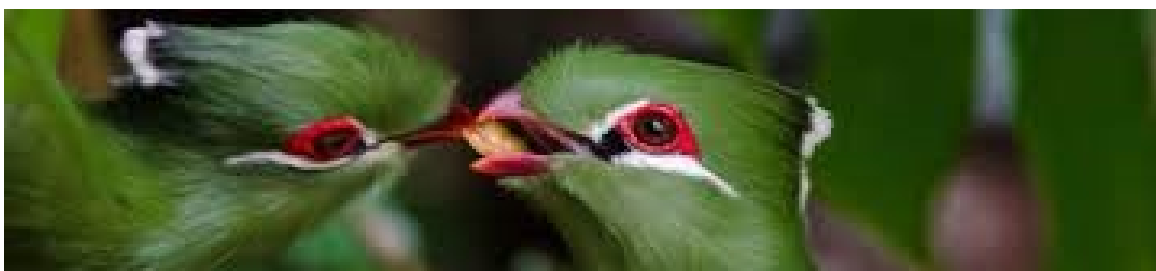
KNYSNA PARADISE COLLECTION



**MONKEYLAND / WORLD'S FIRST FREE ROAMING PRIMARY SANCTUARY  
THE CRAGS | 40 KM | 50 MINUTES DRIVE | NEXT BIRDS OF EDEN**

**Tel: 44 534 8906 / [www.monkeyland.co.za](http://www.monkeyland.co.za)**

Visitors are taken on foot on monkey safaris in indigenous forest by game rangers. On these safaris you can expect to see many species of monkeys



**BIRDS OF EDEN / WORLD'S BIGGEST SINGLE FREE FLIGHT AVIARY  
THE CRAGS | 40 KM | 50 MINUTES DRIVE | NEXT TO MONKILAND**

**Tel: 044 534 8906 / [www.birdsofeden.co.za](http://www.birdsofeden.co.za)**

The unique two hectare dome spans over a gorge of indigenous forest.



**JUKANI WILDLIFE SANCTUARY**

**THE CRAGS | 40 KM | 50 MINUTES DRIVE / Tel: 044 534 8409 / [www.jukani.co.za](http://www.jukani.co.za)**

Jukani Wildlife Sanctuary is home to the big cats and other wildlife species. At Jukani the focus is on conservation education and specifically the plight of large predators.

**We'll be pleased to make any arrangement or reservation for you prior to arrival or during your stay**

Last revised in September 2018

Disclaimer: while all efforts have been taken to make this list as accurate as possible we cannot be held responsible for omissions and accuracy of information contained herewith.





VILLA AFRIKANA

★★★★★ GUEST SUITES

THE BLOEM

★★★★★ GUEST SUITES

KNYSNA PARADISE COLLECTION

## | SHOPPING |



### PORCUPINE CERAMICS

**“Raku” fired ceramic art pieces richly inspired by the art and animals of Africa**

**KNYSNA QUAYS | KNYNSA**

**Tel: +27 (0)44 3820928 / [porcupineceramic.co.za](http://porcupineceramic.co.za)**

Handcrafted ceramic sculptures, pots, plates and utilitarian items of originality and collectability, reflecting the colours and traditions of Africa, are produced by a collective of local artisans.

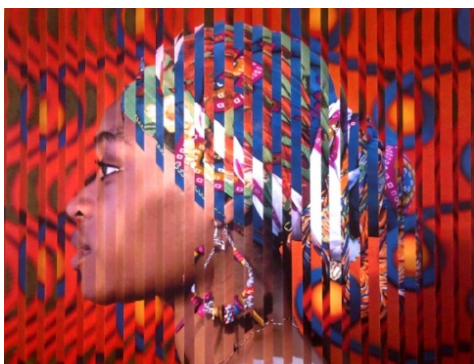


### LEATHERS & FEATHERS

**KNYSNA QUAYS | KNYNSA**

**Tel: 044 382 4693**

Leathers & Feathers sells a superb selection of ostrich leather products – including classic handbags, belts, wallets, purses and key rings. Our range also includes decorated and carved ostrich eggs.



### KNYSNA FINE ART

**LEADERS IN CONTEMPORARY SOUTH AFRICAN ART**

**THESEN HOUSE | LONG STREET | KNYNSA**

**Tel: 044 382 5107 / [www.finearts.co.za](http://www.finearts.co.za)**

One of South Africa's finest galleries. It specialises in contemporary South African art in a variety of media. The owner is Trent Read, the fifth generation of his family to be a dealer. Trent is considered an expert in contemporary South African art.



### AFRICAN ATTITUDE / ETHNIC ARTS & CRAFTS

**KNYSNA QUAYS | KNYNSA**

**Tel: 044 523679**

A unique collection of ethnic arts and crafts objects **small enough to be taken home**

**We'll be pleased to make any arrangement or reservation for you prior to arrival or during your stay**

Last revised in September 2018

Disclaimer: while all efforts have been taken to make this list as accurate as possible we cannot be held responsible for omissions and accuracy of information contained herewith.



VILLA AFRIKANA

★★★★★ GUEST SUITES

THE BLOEM

★★★★★ GUEST SUITES

KNYSNA PARADISE COLLECTION



**OLD GAOL GALLERY AND MARITIME MUSEUM**  
**HOME TO THE KNYSNA ART SOCIETY**  
**GEORGE STREET (CORNER OF Main Street) | KNYSNA**

**Tel 044 302 6320**

The gallery at the Old Gaol is home to the Knysna Art Society while the rest of the space is the Knysna Maritime Museum, a few walls dedicated to the town's seafaring history, jailed life and local elephants,



**THE HEATH COMPLEX**  
**Home to "Ilovani" and The Heath Trading Store**  
**On the N2 between Knysna & Plettenberg Bay**

**The Heath**, a collection of bohemian country stalls tucked away in a grove of tall firs. If work is love made visible, it's very evident here. Handcrafted fine furniture at Ilovani and the original **Heath Trading Store** brimming with colourful crafts reflect their creators' oneness with their media.



**OLD NICK VILLAGE**  
**On the N2 between past Plettenberg Bay**

Shops, workshops and various events in a rambling 19th century Cape Farm complex surrounded by tall trees and over grown indigenous gardens. Expect the unexpected – a musical afternoon on the lawns, a special exhibition, an encounter with birds or the occasional Vervet monkey – gardens exploding with seasonal colour.

**We'll be pleased to make any arrangement or reservation for you prior to arrival or during your stay**

Last revised in September 2018

Disclaimer: while all efforts have been taken to make this list as accurate as possible we cannot be held responsible for omissions and accuracy of information contained herewith.



VILLA AFRIKANA

★★★★★ GUEST SUITES

THE BLOEM

★★★★★ GUEST SUITES

KNYSNA PARADISE COLLECTION

## | PLACES TO VISIT |



### **BRENTON ON SEA | 16 KM | 30 MINUTES DRIVE**

#### **EXCELLENT FOR SWIMMING & BEACH WALKS**

**(Swimming advisable when lifeguard on duty)**

Home of the famous "Brenton Blue" Butterfly, Brenton on Sea nestles between the Indian Ocean and the hills of Knysna's Western Head. It's golden sands are perfect for walking, sunbathing and fishing. From the cliff top paths, schools of dolphins and whales can be easily spotted



### **BUFFEL'S BAY | THE PERFECT DAY OUT | 20 KM | 35 MINUTES DRIVE**

#### **EXCELLENT FOR SWIMMING & BEACH WALKS**

**(Swimming advisable when lifeguard on duty)**

With fine, sandy beaches stretching all the way to Brenton on Sea, it offers beautiful views and breathtaking sunsets. Buffalo Bay is a family beach with safe swimming and excellent surfing conditions, including a "wild side". Perfect for long walks, beach fishing and whale & dolphin spotting.

**We'll be pleased to make any arrangement or reservation for you prior to arrival or during your stay**

Last revised in September 2018

Disclaimer: while all efforts have been taken to make this list as accurate as possible we cannot be held responsible for omissions and accuracy of information contained herewith.





VILLA AFRIKANA

★★★★★ GUEST SUITES

THE BLOEM

★★★★★ GUEST SUITES

KNYSNA PARADISE COLLECTION



**NOETZIE BEACH NATURE RESERVE | 11 KM | 30 MINUTES DRIVE ON GRAVEL ROAD**  
**EXCELLENT FOR BEACH WALKS**  
(100 steps down to beach from parking lot)

Noetzie is one of those places that people remember. For many it is because of the "castles", which have intrigued visitors over the years, and the first question nearly every visitor asks is: "Who built them?" But what really makes Noetzie so special are not the castles, but its natural beauty, much of which is still pristine



**GARDEN OF EDEN**  
**INTRODUCTORY EASY WALK TO THE KNYSNA FOREST**  
**HAKERVILLE AREA | 10 KM | 15 MINUTES DRIVE**

This area of indigenous forest forms part of the larger Knysna Indigenous Forest complex.

Forest mammals are usually hidden but tracks of bushbuck, blue duiker, porcupine, caracal, honey badger, porcupine, baboon and vervet monkey may be seen. There are some 40 species of forest birds, including the Knysna loerie. The trail is level and crosses a number of rustic bridges. There is a "Wheelchair Route" for the physically handicapped.

**We'll be pleased to make any arrangement or reservation for you prior to arrival or during your stay**

Last revised in September 2018

Disclaimer: while all efforts have been taken to make this list as accurate as possible we cannot be held responsible for omissions and accuracy of information contained herewith.



VILLA AFRIKANA

★★★★★ GUEST SUITES

THE BLOEM

★★★★★ GUEST SUITES

KNYSNA PARADISE COLLECTION



### THE KNYSNA LAGOON (The Knysna River Estuary)

The Knysna Lagoon is an estuary supporting the ecology along the coastline with its valuable nutrients. The lagoon is popular with water sports enthusiasts including fishermen. Boats and canoes can be hired by visitors to go exploring, or take a ferry tour around the estuary. Some people still call the Knysna River Estuary the Knysna Lagoon -but, since the mouth is permanently open to the sea (and a lagoon's is sometimes closed by a sand bar), an Estuary it is.

- The Estuary covers 1,633 hectares.
- The navigable channel's about 19 km long, and it's about 2 km at its widest and the average depth of the channels ranges from 1.2 to 1.5 metres below mean sea level. The deepest part of the Estuary is about 16 metres below sea level.
- The tides reach about 17 km upstream from The Heads.



### THE KNYSNA HEADS (The Knysna River mouth)

- The river mouth is about 230 metres wide.
- The tidal rise and fall at spring tide is about 1.8 metres.
- The average flow at the mouth is 1,000 cubic metres of water per second, with a maximum flow of 2,000 m<sup>3</sup>/s – which means that the current in The Heads runs at speeds of up to 1.27 metres per second.

**We'll be pleased to make any arrangement or reservation for you prior to arrival or during your stay**

Last revised in September 2018

Disclaimer: while all efforts have been taken to make this list as accurate as possible we cannot be held responsible for omissions and accuracy of information contained herewith.





VILLA AFRIKANA

★★★★★ GUEST SUITES

THE BLOEM

★★★★★ GUEST SUITES

KNYSNA PARADISE COLLECTION



### **RHEENENDAL RAMBLE**

[www.rheenendalramble.co.za](http://www.rheenendalramble.co.za)

A route designed to share with you the history and tales of the Knysna forest, the Knysna woodcutters, the Millwood Gold rush and of course the Knysna elephants. Very recent sightings of these magnificent animals in front of the Bendigo mine up in the Millwood area and separate sightings of fresh dung and twisted trees. To offer activities for both the young and the old. Some of many include:

Walking trails through the indigenous Knysna forest, informative guided tours, overnight hiking, mountain biking, horse riding, birding, bee keeping courses, guided mine tours, picnics, kloofing, swimming and simply just relaxing.



### **KING EDWARD VII BIG TREE**

**STARTING POINT TO THE KNYSNA ELEPHANT WALKS**

**DIEPWALLE FOREST | 24 KM | 45 MINUTES ON GRAVEL**

Knysna's history is interwoven with its rich indigenous forests. For many years the forests were mercilessly robbed of its rich resources. Extensive destruction of the forests occurred due to indiscriminate harvesting of timber. Fortunately, measures were put into place to preserve and maintain the forests: the indigenous state-owned southern Cape forests were closed from 1939 to 1967 to allow regeneration. Today the forests are managed according to strict conservation principles and harvesting is done in a responsible and ecological sensitive manner.

**We'll be pleased to make any arrangement or reservation for you prior to arrival or during your stay**

Last revised in September 2018

Disclaimer: while all efforts have been taken to make this list as accurate as possible we cannot be held responsible for omissions and accuracy of information contained herewith.





VILLA AFRIKANA

★★★★★ GUEST SUITES

THE BLOEM

★★★★★ GUEST SUITES

KNYSNA PARADISE COLLECTION



### VALLEY OF THE FERNS

**FURTHER UP ALONG THE ROAD FROM THE BIG TREE, GENTLE WALK AMONG THE FERNS  
DIEPWALLE FOREST | 35 KM | 1 HR DRIVE GRAVEL**

The Valley of Ferns is situated on the road between Knysna and Uniondale, approximately 10 km after the Diepwalle forest station. It offers a pleasant, tranquil picnic site and a short walk through the grove of ferns.



### GOUNA FORESTRY STATION / ITALIAN CATHOLIC CHAPEL MUSEUM GOUNA FOREST | 11 KM | 35MTS DRIVE GRAVEL

The **Sant'Ambrosio Chapel Museum** is a small building in the Gouna Forest. The Chapel was built in 1891 for the Italians settlers who came to establish a silk industry in South Africa based on the misinformation that Mulberry trees grew plentifully in the Knysna forest. As the project failed the Italian families were abandoned by the government and eventually became some of the best farmers and woodcutters and still today the names of these families resonate not only in the Knysna area but all over South Africa.

**We'll be pleased to make any arrangement or reservation for you prior to arrival or during your stay**

Last revised in September 2018

Disclaimer: while all efforts have been taken to make this list as accurate as possible we cannot be held responsible for omissions and accuracy of information contained herewith.



# VILLA AFRIKANA

★★★★★ GUEST SUITES

# THE BLOEM

★★★★★ GUEST SUITES

---

KNYSNA PARADISE COLLECTION

---



**PLETTENBERG BAY | BAIA FORMOSA**  
**PLETTENBERG | 30 KM | 40 MINUTES DRIVE**

Plettenberg Bay is the jewel of The Garden Route. It's more than a village, less than a town and is tranquil and charming, hospitable and rather special. Plett (as locals call it) is characterized by sweeping un-spoilt golden beaches, a dramatic rocky peninsula and intriguing lagoons.



**ROBBERG PENINSULA NATURE RESERVE**  
**STARTING POINT TO THE FAMOUS ROBBERG WALKS**  
**PLETTENBERG AIRPORT ROAD | 30 KM | 40 MTNS DRIVE**

The Robberg Peninsula is a nature reserve and national monument that lies about 8km south of Plettenberg Bay. The ecology of the Robberg Peninsula is similar to that of other rocky headlands on this coastline. It presents a fine example of how plants and animals adapt to the interacting influences of land and sea. Robberg offers a choice of three walking trails and the famous Nelson's Bay Caves

---

**We'll be pleased to make any arrangement or reservation for you prior to arrival or during your stay**

Last revised in September 2018

Disclaimer: while all efforts have been taken to make this list as accurate as possible we cannot be held responsible for omissions and accuracy of information contained herewith.





VILLA AFRIKANA

★★★★★ GUEST SUITES

THE BLOEM

★★★★★ GUEST SUITES

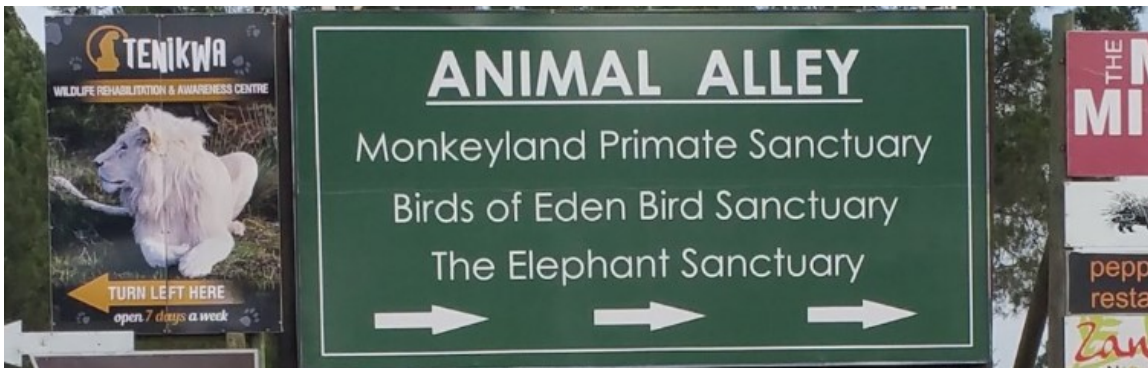
KNYSNA PARADISE COLLECTION



### NATURE VALLEY

#### THE CRAGS | 50 KM | 1 HOUR DRIVE

Nature's Valley is a small village situated next to a beautiful lagoon, enfolded with mountainous forest with rich fauna flora and a bird watchers paradise. Bottle nosed dolphins can be seen in the waves with whales visiting here in early summer.



### THE CRAGS

#### THE CRAGS | 40 KM | 50 MINUTES DRIVE

#### MOST ADVENTUROUS PLACE IN THE SOUTHERN EMISPHERE

[www.cruisethecraggs.co.za](http://www.cruisethecraggs.co.za)

The Craggs is such a "happening" place, a destination with a difference! 22 activities packed into a 30km radius! Monkeyland, Birds of Eden, Tenikwa Wildlife Awareness Centre, The Bramon Winery, Enrico Restaurant, Nature Valley.....

**We'll be pleased to make any arrangement or reservation for you prior to arrival or during your stay**

Last revised in September 2018

Disclaimer: while all efforts have been taken to make this list as accurate as possible we cannot be held responsible for omissions and accuracy of information contained herewith.





VILLA AFRIKANA

★★★★★ GUEST SUITES

THE BLOEM

★★★★★ GUEST SUITES

KNYSNA PARADISE COLLECTION



### OUTDSHOORN

OUTDSHOORN | 120 KM | 1 HOUR 50 MINUTES

**SEE DAY TRIPS AT END OF DOCUMENT**

Oudtshoorn is situated on the edge of the Garden Route, between the Outeniqua and Swartberg Mountain Passes. Its fertile valleys are encompassed by the Swartberg Mountains to the north and the Outeniqua Mountains to the south.



### TSITSIKAMMA NATIONAL PARK

TSITSIKAMMA | 70 KM | 1.1/2 HOUR DRIVE

**SEE DAY TRIPS AT END OF DOCUMENT**

The Tsitsikamma National Park is Africa's oldest, largest and most beautiful Marine Reserve. This makes the Tsitsikamma the country's prime Eco Tourism destination. Adventure seekers will revel in the diverse range of activities. Alternatively, visitors may simply relax and unwind for a day or two in a supremely tranquil and pristine wonderland of forest, mountain and sea.

**See how our guests have rated their experiences in the log book located in the main lounge. Rate them yourself to help other guests make better choices.**

**We'll be pleased to make any arrangement or reservation for you prior to arrival or during your stay**

Last revised in September 2018

Disclaimer: while all efforts have been taken to make this list as accurate as possible we cannot be held responsible for omissions and accuracy of information contained herewith.



VILLA AFRIKANA

★★★★★ GUEST SUITES

THE BLOEM

★★★★★ GUEST SUITES

KNYSNA PARADISE COLLECTION

## | DAY TRIPS |

### KLEIN KAROO | OUDTSHOORN FULL DAY TRIP

**Itinerary:** Knysna | George | Outeniqua Pass | Ostrich Farm | Cango Caves | Summit of the Swartberg Pass (Die Top) | Oudtshoorn | George | Knysna



**Distance:** Approximately **344 kilometers | 9 Hours and 30 Minutes (5 hours of driving and 4 hours and 30 minutes of amazing attractions.** (Distances and Drive Times are approximate)



The Klein Karoo or Little Karoo is a long valley bordered by the Swartberg Mountains to the north and the Langeberg / Outeniqua Mountains to the south. This is the land of succulents - their thick, fleshy diversity unparalleled anywhere else in the world. Visitors testify of the regions distinctive geology, the friendliness of its people and the mystique of the landscape. Today the Ostrich Farms, together with the Cango Caves - a series of subterranean chambers - are the main draws to the region, but it is the Swartberg Pass - rated one of the most spectacular drives in Africa - the unique sandstone architecture and the Afrikaans ambience of the Towns that makes no Garden Route itinerary complete without a visit to the Klein Karoo.

Enjoy the relaxed, and hospitable atmosphere offered in the area. Some of the attractions in the Klein Karoo and around Oudtshoorn are:

**The Cango Caves:** One of the world's great natural wonders, sculptured by nature through the ages. It is situated close to Town of Oudtshoorn. Mysterious and breathtaking limestone formations in a wide variety of natural colours, a subterranean wonderland. Regular guided tours daily.

**The Ostriches:** Amidst the 400 ostrich farms surrounding the town, there are several distinguished "show farms". Become exposed to this exotic bird species, the largest in the world. Guided tours available.

**Crocodiles:** Gaze with the awe at the slithering reptiles' species from all over the world. Imagine... more than 400 crocodiles and alligators in their prehistoric unattractiveness. They're being bred here and they're awfully nice, as long as you don't get too close!

**Cheetahs:** A highly successful breeding station of this threatened species, one of the only two in the southern hemisphere. You can get yourself photographed cuddling a cheetah cub, the fastest animal on land.

**We'll be pleased to make any arrangement or reservation for you prior to arrival or during your stay**

Last revised in September 2018

Disclaimer: while all efforts have been taken to make this list as accurate as possible we cannot be held responsible for omissions and accuracy of information contained herewith.



VILLA AFRIKANA

★★★★★ GUEST SUITES

THE BLOEM

★★★★★ GUEST SUITES

KNYSNA PARADISE COLLECTION

## TSITSIKAMMA NATIONAL PARK & SURROUNDINGS FULL DAY TRIP

**Itinerary:** Knysna | Garden of Eden | Knysna Elephant Park | Plettenberg Bay | The Craggs | Nature Valley | Bloukrans Bridge | Tsitsikamma National Park | Knysna

**Distance:** Approximately **200 kilometers | 6 Hours** (2 hours and **30 minutes driving and 3 hours and 30 minutes** of amazing attractions. (Distances and Drive Times are approximate)

The Tsitsikamma National Park is situated at the heart of the picturesque tourist region known as the Garden Route, found in the Southern Cape of South Africa. Tsitsikamma is a Khoisan word meaning, "place of much water". The Park incorporates 80 km of rocky coastline with spectacular sea and landscapes, a remote mountainous region with secluded valleys covered in mountain Fynbos and temperate high forests with deep river gorges leading down to the sea.

The Tsitsikamma's spectacular scenery includes the Indian Ocean breakers, pounding rocky shores beneath 180 m high cliffs, ever-green forests and fynbos (proteas and heath) rolling down to the sea in a lush carpet where ancient rivers have carved their path to the ocean through rocky ravines. All this conspires to attract large numbers of international and local tourist to the Park.

Tsitsikamma National Park protects a wonderland of inter-tidal and marine life. This is one of the largest single unit 'no take' (including fishing) Marine Protected Areas in the world, conserving 11% of South Africa's Temperate South Coast rocky shoreline and provides a 'laboratory' for fisheries baseline research on endangered fish species. In 1964 when it was proclaimed, it became the first Marine National Park to be proclaimed in Africa.



**See how our guests have rated their experiences in the log book located in the main lounge. Rate them yourself to help other guests make better choices.**

**We'll be pleased to make any arrangement or reservation for you prior to arrival or during your stay**

Last revised in September 2018

Disclaimer: while all efforts have been taken to make this list as accurate as possible we cannot be held responsible for omissions and accuracy of information contained herewith.

29 of 29