

# SARUNI BASECAMP

PEOPLE  NATURE



## THE SUPREME SAFARI

UNFORGETTABLE ENCOUNTERS  
WITH WILDLIFE AND PEOPLE

Wildlife hotspots and hidden gems.

6 nights / 7 days

SIGNATURE SAFARIS - Masai Mara & Samburu Safari





SUGGESTED SAFARI OVERVIEW  
**THE SUPREME  
SAFARI 2024**

**OFFER VALIDITY**

03 January 2024 – 02 January 2025

**DESTINATION**

Masai Mara & Samburu, Kenya

**LODGES & CAMPS**

Saruni Samburu, Saruni Mara  
and/or Saruni Wild

**DURATION**

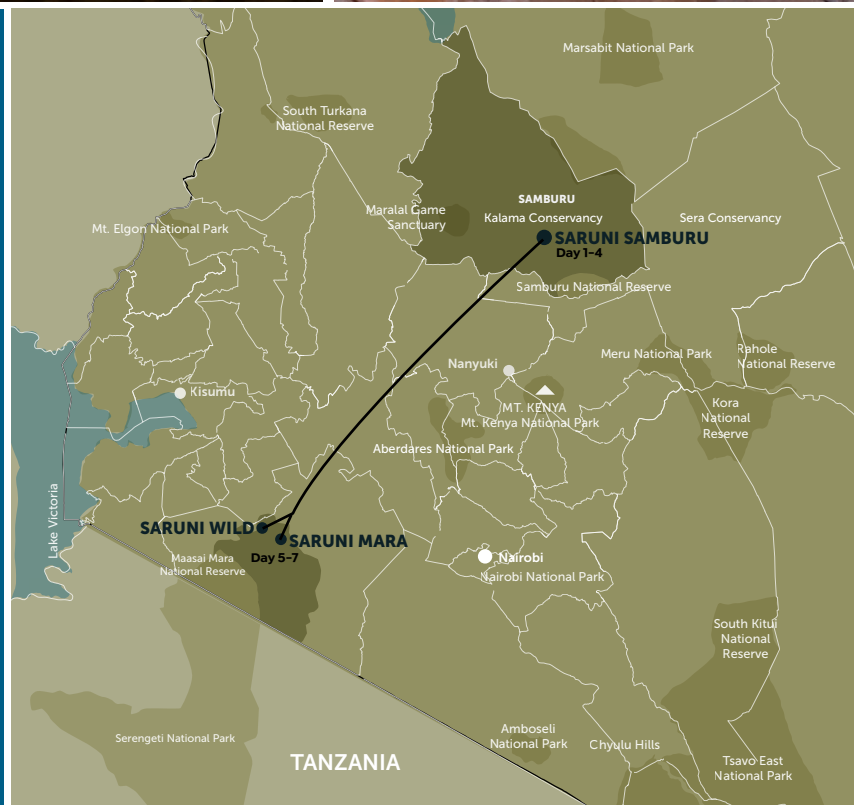
6 nights / 7 days

**MINIMUM GUESTS**

2

**ALL-INCLUSIVE COST**

FROM **US\$5,075** per adult sharing



Take advantage of the opportunity to experience two of Kenya's most spectacular regions – Samburu and the Mara – in one combined itinerary. Discover the contrasts that divide these areas – and the similarities that unite them – as you explore two worlds within one country.

From the rugged beauty of northern Kenya to the vast sweeps of the Mara savanna, this itinerary will consistently surprise and delight you. Just as the two regions are different, no two days on this safari are the same.

We've designed this safari to bring you the very best of wild Kenya – the land where safari began, and which remains unsurpassed as a wildlife destination.

Like all our suggested safaris, this Supreme Safari can be adjusted to accommodate your specific requirements. Talk to our journey specialists about making changes, so that they can create your perfect tailor-made Kenyan safari itinerary.



## HIGHLIGHTS

- Exclusive access to private conservancies
- Breath-taking views from remarkable locations
- Unique lodge and camp architecture
- Eco-friendly accommodation options
- Incredible wildlife sightings, including the 'Samburu Special Five'
- Knowledgeable local guides
- Authentic encounters with neighbouring communities
- Access to locations that are normally off-limits

## THE SARUNI BASECAMP DIFFERENCE

- The very best of Kenya
- Safaris designed around your preferences
- Streamlined transfers to maximise your time in the wilderness
- The flexibility to extend or customise your safari holiday
- Unique, unforgettable experiences
- Remarkable locations
- Remote, secluded and intimate lodges and camps
- Warm, welcoming Kenyan staff
- Expert local guides, skilled at interpreting the wilderness and their cultural traditions
- Deep insights into conservation challenges and solutions
- Chances to give back

## Lodges & Camps

### Saruni Samburu x 3 nights

- Astonishing setting, reached by a drive-up steeply, sloping rocks
- Breath-taking views across the mountains of northern Kenya
- Exclusive access to the untouched Kalama Conservancy
- Opportunities to explore the Samburu National Reserve
- Samburu Wellbeing Space and Italian-inspired cuisine
- The chance to visit the Reteti Elephant Sanctuary
- Opportunities to visit sacred Samburu sites that few outsiders have ever seen

### Saruni Mara x 3 nights

- Secluded valley setting
- Access to the private Mara North Conservancy
- In the path of the Great Wildebeest Migration
- Intimate luxury lodge
- Maasai Wellbeing Space and Italian-inspired dining
- Optional extra hot air balloon flights

AND / OR

### Saruni Wild x 3 nights

- Elegant, classically styled tented camp
- Access to two private conservancies
- Iconic Mara plains setting
- Prolific wildlife
- Boundless savannah views
- Al fresco dining
- Optional extra hot air balloon flights

## PRICING

**PUBLISHED RATE** | Per adult sharing

<b>Low Season</b>	01 Mar-31 May 2024 01-30 Nov 2024	<b>US\$5,075</b>
<b>Mid-Season</b>	03 Jan-29 Feb 2024 01-30 Jun 2024 01-31 Oct 2024 01-19 Dec 2024	<b>US\$5,805</b>
<b>High Season</b>	01 Jul-30 Sept 2024 20 Dec 2024-02 Jan 2025	<b>US\$6,505</b>

# SUGGESTED SAFARI

(MAY VARY DEPENDING ON LOCAL CIRCUMSTANCES, WEATHER, AND THE RECOMMENDATIONS OF YOUR GUIDES)

## Day 1 | Saruni Samburu

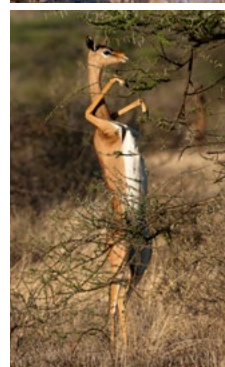
- Arrive at Jomo Kenyatta International Airport, where a Saruni Basecamp vehicle will transfer you to Wilson Airport for your charter flight to Samburu.
- Depart Nairobi in the morning\*, arriving at Samburu around an hour later, where your Saruni Samburu guide will meet you and transfer you to the lodge, or take you on your first Samburu game drive to give you a taster of this remarkable region.
- Afternoon game drive in the Kalama Conservancy, with over 200,000 acres of pristine, private wilderness to explore, before sundowners in a secret spot that offers breath-taking views.

## Day 2 | Saruni Samburu

- Begin your day with an early morning game drive into Samburu National Reserve in search of the 'Samburu Special Five' - rare endemic species that occur only in this part of the country.
- Enjoy an al fresco picnic lunch before heading back to Saruni Samburu to relax for the afternoon.
- Relax with a complimentary half-hour back and neck massage in the Samburu Wellbeing Space before sundowners at the lodge, or a sunset swim in the rock-hewn pool as you enjoy the spectacular views.

## Day 3 | Saruni Samburu

- Continue to explore the wonders of Samburu with a morning game drive. After lunch, head out on a nature walk discovering animals, plants and the local cave paintings in the company of skilful and knowledgeable Samburu guides.
- Evening game drive in the exclusive Kalama Conservancy ending with a wilderness bush dinner under the stars, followed by a night drive back to the lodge. Your meal will be accompanied by the thrilling spectacle of Samburu warriors dancing in full traditional regalia.



## Day 4 | Saruni Samburu to Saruni Mara / Saruni Wild

- Depart Samburu on your morning flight and arrive in the Masai Mara an hour and a half later.
- Game drive with a picnic lunch under an acacia tree or by the river next to a pod of hippos.
- Alternatively, head to Saruni Mara or Saruni Wild for some rest and relaxation before an exclusive game drive later in the afternoon in the Mara North Conservancy – your chance to explore a corner of the Mara ecosystem that's rarely visited, yet teeming with wildlife.



## Day 5 | Saruni Mara / Saruni Wild

- Early morning game drive to look for the big cats and other predators of the Mara, returning
- to the camp or lodge for lunch and treatments at our Maasai Wellbeing Space.
- In the afternoon, explore new areas on your game drive followed by dinner at the lodge or camp and an optional night game drive in search of nocturnal creatures.



## Day 6 | Saruni Mara / Saruni Wild

- Walk through the valleys and plains surrounding your lodge or camp, or embark on a game drive to one of the highest points in the Mara to enjoy panoramic views, accompanied as always by skilful and knowledgeable Maasai guides. In the afternoon, discover more of Mara North and its neighbouring conservancies and experience first-hand what makes the Mara one of the most exciting wildernesses in the world.
- Weather permitting, experience a bush dinner under the vast African night sky, with Maasai warriors singing and dancing around the fire.



## Day 7 | Departure

- A final morning game drive to the airstrip, via either the river or the rhino sanctuary, before your flight back to Nairobi.
- Your return flight to Nairobi leaves the Mara at 11:00\* and arrives in Nairobi at 12:20\*.
- Saruni Basecamp transfer\* to Jomo Kenyatta International Airport, with the option of dinner at either Talisman or Carnivore. Bookings will be dependent on your flight times, with dinner for your own account.





PEOPLE  NATURE

## THE SMALL PRINT

### Included

- All-inclusive accommodation (full-board accommodation including soft drinks, beers, house wines and select non-luxury spirits).
- One complimentary back & neck massage (30 minutes) per room per stay at our Wellbeing Space
- Selected laundry service
- Activities including shared day and night game drives in 4x4 vehicles, guided bush walks, bush meals, sundowner & picnic excursions, Warriors Academy (where available and upon request in advance)
- Transfers, all internal flights and return airstrip transfers
- Airport assistance
- Temporary Flying Doctors cover
- Daily conservation fees
- VAT and local taxes

### Excluded

- Exclusive use of vehicle
- Premium drinks (Champagne, luxury spirits and special wines),
- Additional Wellbeing Space treatments
- Any payable extra activities
- Entry fees to local cultural visits
- Childcare
- Transport and entry fees to Reteti Elephant Sanctuary (bookable in advance)
- Transport and entry fees to the Masai Mara National Reserve in the Mara
- Gratuities to staff and guides
- Own private guides and drivers
- Any payable extra services
- Anything of a personal nature
- International flights and visa fees
- Late departure fees
- All statutory increases beyond our control

### Please note

#### Rates

- Rates with children or for single occupancy are available upon request.

#### Internal flights

- \*Flight times and durations may vary depending on airline, weather and routing, and are subject to change. Road transfer times and durations also subject to change, and will be coordinated with your flights.
- Seats on scheduled flights are subject to availability at confirmation.
- Baggage allowance on internal flights is 15kg per person, preferably in small, soft-sided bags without wheels.