

Off the beaten path and into the heart
of conservation & adventure



Mopane Bush Lodge

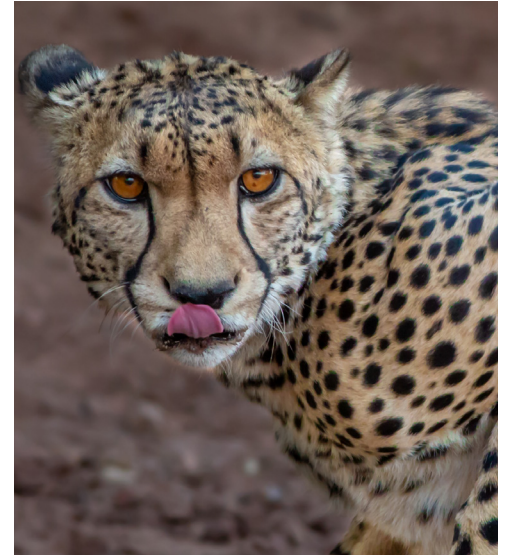


Mopane Bush Lodge is set away, off the beaten path, far from the mainstream tourist areas, and adjacent to the **Mapungubwe National Park** and **UNESCO World Heritage** site in the northern most region of Limpopo, South Africa.

It is located inside the **Mapesu Private Game Reserve**, a 7200-hectare property surrounded by unique sandstone formations, mopane bushveld, and a myriad of wildlife. The reserve focuses on **biodiversity, conservation** and the **protection**, and **species reintroduction**, with special efforts on **endangered species**.

Mopane Bush Lodge is an integral part of the Pearls of Limpopo tour, a collection of luxury lodges designed to offer the best accommodations and adventures in safaris around Limpopo, and the **Tuli region of Botswana**. It is just two and a half hours away from the world-famous **Kruger National Park** (Parufi Gate), making it a popular stopover.

Guests can enjoy the **spa services, hospitality, local and international cuisine** while marveling at the **history, culture, and animals** on game drives.





There are 15 spacious thatch roof chalets providing a luxurious and relaxing environment with top quality mattresses and bedding (2 twin beds/1 double bed), generous cupboard space, a safe, hairdryer, mini-bar/fridge, good lighting, dressing table, and air-conditioning. Each chalet has a private garden, table and chairs with stunning views overlooking the bushveld and most have private splash pools. Free Wifi available on the property and each chalet except at self-catering. **Laundry** service and **Spa Services** are also available.



The four self-catering chalets offer a large room with 2 twin beds/1 double bed, bathroom with shower, large closet, dining table with two chairs, air-conditioning, and each equipped BBQ, microwave, toaster, fridge, coffee/tea station, utensils and cutlery for two.

Guests can order breakfast, lunch, or dinner from Lodge restaurant. Lodge pool and bar area close by and accessible. WiFi not available at units but can be accessed at the lodge and communal areas. **Laundry** service and **Spa Services** are also available.







Mapesu Wilderness Camp



Discreetly tucked away on a hillside with stunning mopane bushveld views are **ten luxurious Serengeti tents**. Each has an ensuite bathroom with an **outdoor shower** and **large tub**, **air-conditioning**, quality bedding, large closets, desk, and indoor and outdoor seating. Set apart the units enjoy a **private 180° private vista** overlooking the red sand bushveld, so that nature lovers can relish their time in this secluded and mystifying area. Guests can enjoy the various communal spaces: **pool, restaurant/bar, outdoor dining spaces, pizza boma** with Free WiFi. Laundry services are available and Spa services at the Lodge.

The Wilderness Camp facility can hold **conferences for upto 100 people** with **catering** and other services possible.



Campsite



The campsite is nestled between shady cork, baobab, mopane, and syringa trees. Being close to a natural waterhole attracts many of the animals on the nearby ridges.

There are **24 individual sites** in an un-fenced area with electricity at each site. The location has three ablutions blocks, each containing four showers, four toilets, two basins, and an outside sink for washing. **Rental of senior safari dome tents** (max 2 per person) with luxury bedding, lighting, and electrical outlets are optional.

Full **restaurant/bar and pool** located 500 meters by car at the Mapesu Wilderness Camp. Firewood and ice are available for purchase.





Conference capacity up to 100 people





Activities



Be absorbed in the variety of activities that inspires the soul and intellect as you journey through ancient Africa.

- **Conservation experiences**
- **Game drives**
- **Mapungubwe National Park**
- **Mapungubwe UNESCO World Heritage Centre**
- **Incredible vistas over the confluence of the Limpopo and Shashe River**
- **Mapesu dam**
- **Birding hotspots over 400+**
- **Ancient baobab trees**
- **San Rock Art**
- **Treetop walkway**
- **Plus many other attractions**







Conservation Efforts

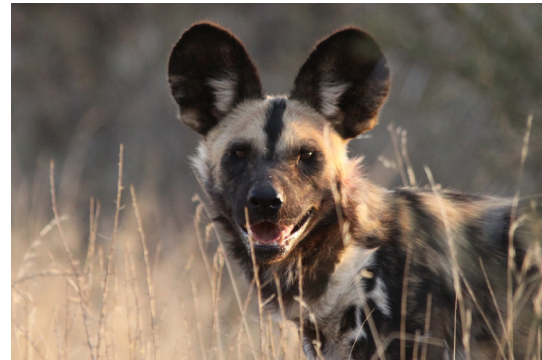


We believe that Africa's nature, wildlife, and ecosystems are fundamental to the long-term wellbeing of all people.

This land was once used for cattle farming, and our goal is to bring this area back into its natural state. To do that, we have various initiatives that are **regenerating the flora and fauna**.

With the support of various individuals, companies, and collaborators, such as the Endangered Wildlife Trust (EWT), the African Pangolin Working Group, and the Shared Universe Foundation we are delighted to have **re-introduced rhino, wild dog, elephant, cheetah, buffalo, giraffe, sable, zebra, ostrich and a host of other species**.

The work continues...







MOPANE
BUSH LODGE

Mapesu

WILDERNESS CAMP

R572 Musina / Pontdrift Road,
P.O. Box 837
Musina 0900,
South Africa
Tel: +27 015 534 7906
or +27 083 633 0795

www.mopanebushlodge.com
www.mapesu.com

Contact us to arrange your visit,
discuss a proposed itinerary, or to
make a booking:
bookings@mopanebushlodge.com



Mopane Bush Lodge is situated inside the Mapesu Private Game Reserve and next to Mapungubwe National Park on the R572 Musina/Pontdrift Road in the Limpopo Province. The closest town is Musina (Messina), 63km to the East.

