



ACTIVITIES



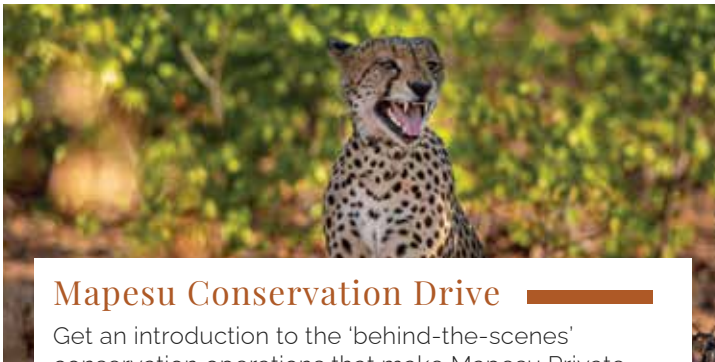
Mapesu Game Drive

Our beautiful home is a unique 7200 ha game reserve. Our guides would love to show you around, as there is so much to discover, sense, and experience! Mapesu is home to elephants, leopards, cheetahs, African wild dogs, buffalo, hippopotami, and a wide variety of big and small antelope. Come enjoy a Game Drive in the comfort of a game viewer and discover Mapesu's beauty.



Mapesu Night Drive

The night brings the animals to life! Being enveloped in the electric sounds and secretive life of the animals under the canvas of stars in the comfort of our game viewer is exciting. The evening brings opportunities to see species you are unlikely to find during the day. Be on the lookout for bush babies (galagos), bushpigs, hyenas, genets, and the tiniest chameleons. Maybe you will get lucky and experience a thrilling encounter with a leopard!



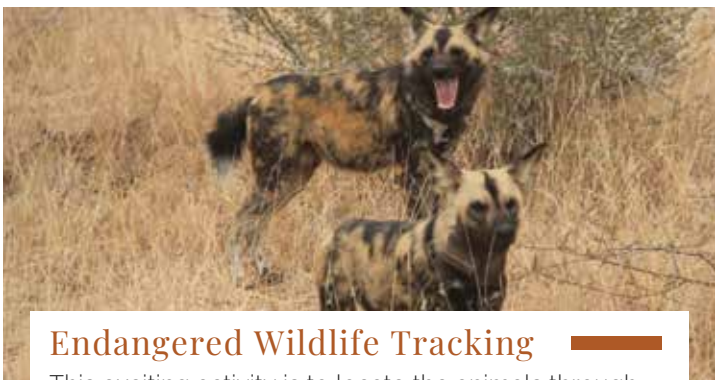
Mapesu Conservation Drive

Get an introduction to the 'behind-the-scenes' conservation operations that make Mapesu Private Game Reserve tick. Learn about conservation management, the daily duties ranging from bush clearing, erosion control, and anti-poaching to stocking control and fence maintenance. Set up a camera trap with your guide and discover what came past! Whilst enjoying being out in the bush, you will leave this unique experience with a better understanding of the conservation of our beautiful flora and fauna.



Mapungubwe Game Drive

Join us on a drive in the comfort of a game viewer in South Africa's youngest and most northern national park. Covering roughly 28,000 ha the park plays an essential role in conserving the stunning and unique Limpopo Valley's ecology.



Endangered Wildlife Tracking

This exciting activity is to locate the animals through the use of telemetry, technology, and old-fashioned tracking. It will include both mobile and on-foot tracking while accompanied by an experienced guide. The experience will give you a deeper understanding of what it takes to safeguard, protect, and conserve the endangered species here at Mapesu.



Mapesu Walking Safari

Put on your walking shoes to embark on a guided tour through the African bush for an all-encompassing experience. Immerse yourself in the tranquility of being in direct contact with nature. Traversing on foot without the confines of a vehicle allows for a greater sense of exploration. You will gain environmental awareness through listening, observing, and interpreting first everything around you. Accompanied by our expert guides, this will be a truly unique and unforgettable journey. Walk in the footsteps of majestic creatures like the African Elephant, tracing their ancient paths alongside us.



Mapungubwe National Park Western Section & Maloutswa Hide Tour

You will join us in the western section of Mapungubwe National park for this game drive. Here we have the opportunity to spend some quality time at Maloutswa hide overlooking the waterhole and the animal activities surrounding it. The hide offers a great way to experience wildlife - big and small without interrupting their daily activities and natural behaviour.



Mapungubwe Heritage & Museum Tour

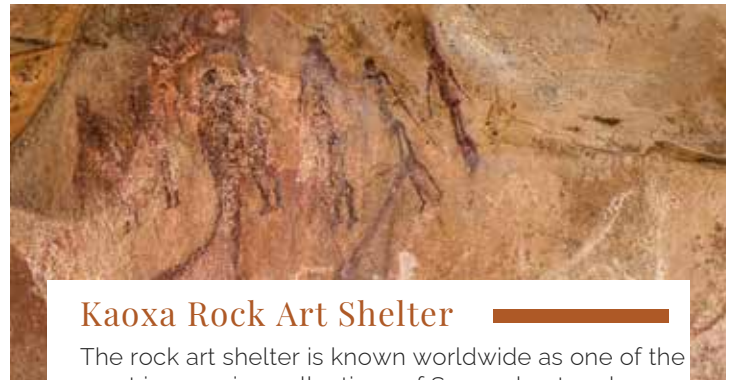
Walk the steps to the summit of the UNESCO World Heritage Site of Mapungubwe Hill, the location of the first South African Bantu Kingdom. Guides will regale you with tales of gold artefacts and ancient civilizations. After touring the Heritage site, you'll visit the award-winning Mapungubwe Museum and view history and the treasures on display.



Wian Nieman

Specialist Birding Excursion

Grab your binoculars and join us for a guided tour to see some of the most remarkable bird life Limpopo has to offer! This tour is completely tailored to your wishes. Depending on what you would like to see, we have various locations and different habitats to look for that one feathered friend you would like to target. Our birding excursions are possible at the following locations: Mapungubwe National Park (both the Western and Eastern sections), Mapesu Private Game Reserve, Scroda Dam, and San Maria Wetlands. Mapungubwe National Park has 383 recorded Bird species and over 433 in our region, including the elusive Pel's fishing owl and the visiting broad-billed rollers.

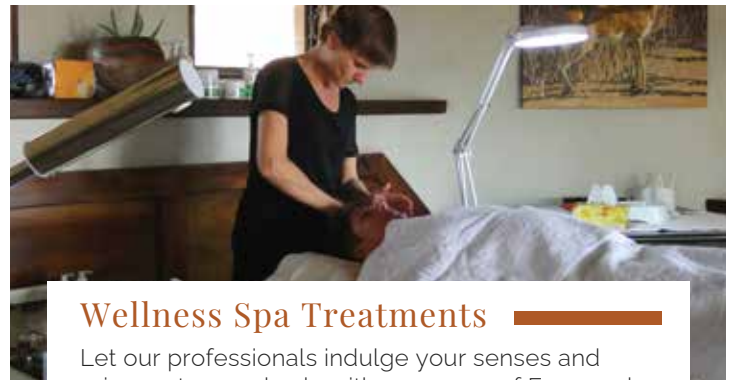


Koaxa Rock Art Shelter

The rock art shelter is known worldwide as one of the most impressive collections of San rock art and one of the top 10 in South Africa. This tour will leave you amazed and in awe of the ancient, unique, and stunning paintings encrypted on sandstone thousands of years ago. Our guide will help you understand and learn about the San people, their belief system surrounding these rare and unique works of art, their culture, and their ways of life.

Departure times for activities:

Requesting a different time, a private vehicle, or have any other questions regarding our activities? Please liaise with your guide directly for possibilities.



Wellness Spa Treatments

Let our professionals indulge your senses and rejuvenate your body with our range of Face and Body Treatments. Contact us to reserve.

ACTIVITY DEPARTURES*

*Please note: all departure times are subject to change at discretion of the guide.

	SUMMER (01-10 / 31-03)		WINTER (01-4 / 30-9)	
	AM	PM	AM	PM
Mapesu Game Drive	06:00	16:00	06:00	15:30
Mapesu Conservation Drive	06:00	16:00	06:00	15:30
Endangered Wildlife Tracking	06:00	15:30	06:00	15:00
Mapesu Night Driving	-	20:00	-	20:00
Mapesu Walking Safari	05:30	16:00	06:00	15:00
Mapungubwe Game Drive	06:00	15:00	06:30	15:00
Koaxa Rock Art	06:00	16:00	06:30	15:30

Departures from the Wilderness Camp are 20+ minutes later than listed