



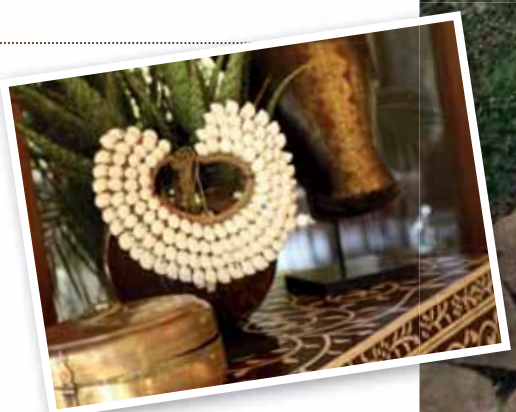


WHERE LUXURY MEETS LEGEND

Located in Tsavo West National Park, Finch Hattons Luxury Tented Camp is set around natural fresh water springs within 35 acres of pure untouched wilderness and surrounded by views of Mt. Kilimanjaro and the magnificent Chyulu Hills.

“Rich in the history of luxury safaris in Kenya we originally opened in 1993 and are one of the pioneers in luxury tented camps.”

Following a complete re-build of the entire camp, we re-opened in 2015 and were named Best New Safari Camp by Architectural Digest in 2015 and voted as Africa's Leading Tented Safari Camp at the World Travel Awards in 2016. The Finch Hattons team takes pride in providing an unparalleled luxury safari experience for multi-generational travel together with tailor-made experiences for our guests reminiscent of Old Africa.





WELCOME TO WILD LUXURY!

At Finch Hattons Luxury Tented Camp we have preserved the ideals that Denys Finch Hattons lived by; a dedication to elegance and style, coupled with a passionate love of the Kenyan wilderness and a long forgotten way of life.

Tsavo National Park is one of the Original Kenyan adventure's playgrounds, and its biodiversity is simply spectacular. Being so vast, you rarely see any other game vehicles and you can enjoy the park as if it is your own. No two game drives are the same and a safari in Tsavo is full of exciting game viewings, romantic sceneries and dramatic sunsets and sunrises.



TSAVO NATIONAL PARK

Tsavo is Kenya's oldest and largest National Park, totalling 20,333 sq km and it was designated as Kenya's first National Park in 1948.

The park borders Tanzania's Mkomazi National Park, Kenya's Chyulu National Park, Arabuko Sokoke national forest on the Kenyan coast and various sanctuaries, conservancies and group ranches. Given Tsavo's sheer enormity and its unique eco-system, it has a very diverse landscape. From the cloud forest on the Chyulu Hills, semi arid scrub, volcanic lava fields, Jurassic age granite monoliths and the cliffs of the Yatta plateau, one of the world's largest at roughly 290 km long, one can spend days and days and barely scratch the surface of what Tsavo has to offer.

Tsavo wildlife attractions in the area include: the largest population of red elephants in East Africa, a resident herd of over 12,000 buffalos, bushbucks, elands, giraffes, hartebeest, impala, leopard, lions, cheetah, oryx, wildebeests and many more. With over 500 bird species habitat to the area, Tsavo is a bird spotters paradise.

Tsavo also boasts close proximity and some of the best views of Mt. Kilimanjaro's peaks, as it borders Tanzania to the south. Throughout Tsavo West, its imposing magnitude is omnipotent.





LUXURY TENTS

Our 17 Luxury Suites are a contemporary twist on the classic safari style and the tents are designed to invite the cooling breeze closer over the water, transporting all the African sounds, tastes and smells right onto your doorstep.

Our eco-friendly tents are built with sustainable materials and elevated off the ground ensuring a minimal environmental footprint. With indoor and outdoor showers, copper bath tubs and luxury white linens offset by soft chandelier lighting, the suites are reminiscent of the glorious golden days of safari, yet provide all the luxury trimmings of a modern boutique hotel.

All our tents can be double or twin beds configuration. Two of our tents are two-bedroom family suites and there is also The Finch Hattons Suite with its own butler service and plunge pool.

We can cater for a maximum of 38 people at any one time.



AT A GLANCE



Free Standing
Bath Tub



Laundry
Service



Hair Dryer



Outdoor &
Indoor
Shower



Maxi-Bar



Safe



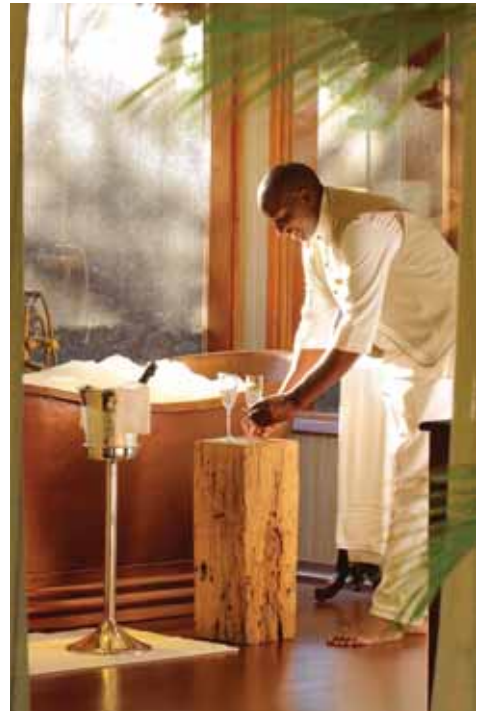
Universal
Sockets



Africology
Amenities



Luxury
Linens



DINING EXPERIENCES

The Dining experience at Finch Hattons is legendary and renowned for its quality of food and service. The chef and his team can prepare light al-fresco lunches by the poolside to wine paired fine dining 7-course dinners served with silverware, cut crystal and porcelain. Our kitchen creates inspirational menus and where possible uses produce from our own organic garden.

Meals are set up in different locations to create a varied dining experience. They include bush breakfasts, dining under the stars, on the open pavilion deck facing Mt. Kilimanjaro or by the poolside.





FAMILIES

We are one of the only safari camps in Kenya to have a two bedroom tent interconnected by a lounge. At over 200 sqm, the family suite provides luxurious accommodation dedicated to families. The suites are close to the public areas and the young explorers club. We are equipped for multi-generational groups, with the family suites being popular for elder family members as well as being equipped for ambulant disabled guests.

For health and safety reasons we recommend a minimum age of 6 for our younger guests at Finch Hattons.

Young explorers are able to join the crater climbs and the Chyulu walks, as well as the cooking classes. There is a dedicated kids menu which can cater for different dietary needs and requirements.



THE FINCH HATTONS EXPERIENCE

Following the camp's re-build, stunning new facilities include the Chyulu Spa and Wellness Centre, a hammam, new dining pavilion, cigar bar, reception, wine cellar, main infinity pool, a 12m high observation deck, a star gazing terrace, the young explorers club and the resource centre. Complimentary Wifi is available throughout the camp.

Finch Hattons is also the ideal place to host conferences, board meetings and special celebrations such as weddings, milestone birthdays and anniversaries.

Our converted Land Cruisers make the perfect safari vehicle and are ideal for exploring the wildlife in Tsavo. We arrange guided hikes in the Chyulu Hills and crater climbs in Tsavo preceded or ending with a bush breakfast or sundowner.

'Your wish is our command' and with advance notice we can help to meet your wishes; be it aerial tours over Tsavo or a yoga filled weekend.



AT A GLANCE



Wi-Fi
Throughout
Camp



Spa &
Wellness
Centre



Swimming
Pool



Fitness
Centre



Boma
Fireplace



Observation
Deck







CHYULU SPA & WELLNESS

At 650 sqm, the Chyulu Spa and Wellness Centre is a marvel to be experienced. It features an elevated yoga pavilion overlooking the fabulous Chyulu Hills, two air-conditioned treatment rooms, a fitness centre, an infinity pool and a hammam; all in the majestic setting of Tsavo West National Park.

Keep an eye on our annual calendar for health and wellness weekends with specially invited teachers and practitioners.

We use Africology products for both the spa treatments and the in-room amenities. Africology offers a luxury, natural and eco-friendly skincare range, fragranced only with pure essential oils. We love its natural composition not only for our guests but for the earth too!

At the Chyulu Spa and Wellness Centre you will experience a soulful journey that will leave both your body and mind revitalised and in tune with nature.



ACTIVITIES

GAME DRIVES - DAY & NIGHT

Using one of our Land Cruiser open game viewing vehicles you can experience the adventure of game viewing in Tsavo National Park and explore the diverse landscapes from the forests to the volcanic lava flows.

BUSH WALKS & CRATER CLIMBS

In the company of a safari guide and ranger, learn about the wildlife, birdlife and flora & fauna to understand how nature lives and thrives in the Tsavo. Experience a one hour hike to the top of Ol Donyo Larami and be stunned by a 360° view of the magnificent Tsavo National Park.

BUSH BREAKFAST

Bush breakfasts are a chance to enjoy a full breakfast, al fresco, in the middle of the bush surrounded by wildlife. An experience not to be missed.

SUNDOWNER

Sundowners are a safari tradition; after a day of safari, stop and watch the spectacular sunset with views of Mt. Kilimanjaro - traditionally with a gin and tonic in hand and even hot hors d'oeuvres!

NGULIA RHINO SANCTUARY

Visit the nearby Ngulia Rhino Sanctuary which is home to the endangered black rhino. This 35 sq miles wildlife sanctuary provides a refuge and breeding ground for rhinos alongside a variety of other species.





ACTIVITIES

CULTURAL VISITS

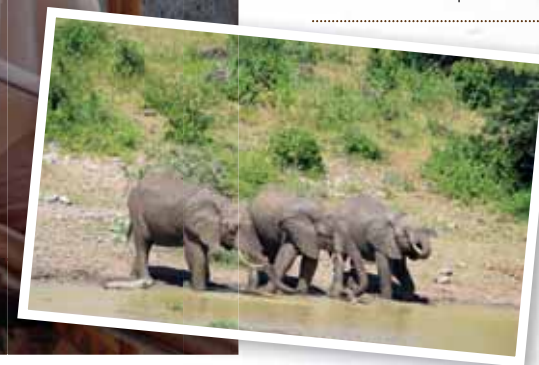
A cultural visit gives you an insight into the daily life of the Masai in the close by town of Ilital. The warm and friendly inhabitants of the village will invite you to share a glimpse of their daily lifestyle from milking the cows to building “Manyatta’s”, their homes.

TSAVO EXPLORER ADVENTURES

Optional day excursions to Mzima Springs, Chyulu Hills, Amboseli and Lake Jipe. Set off at sunrise with our picnic breakfasts and comfortably stay out all day with our delectable picnic lunches.

YOUNG EXPLORERS CLUB

A dedicated kids clubhouse including TV, DVDs and games. Activities are wildlife focused and include, but are not limited to, bush survival skills, guided walks to learn about the flora & fauna, identifying animal footprints and making their own bow & arrows. There is also a resource centre at camp providing the perfect platform to learn about the insects and reptiles which are residents of Tsavo.



CONSERVATION AND COMMUNITY

At Finch Hattons, we strongly believe in being responsible stewards of the magical place we are lucky enough to call home. For over 25 years, we have actively supported the Kenya Wildlife Service and the Tsavo eco-system and have directly been involved in the conservation of this unique eco-system through both our presence and staff.

Our responsibility extends not only to the eco-system we are located in, but also to the communities that surround us. Our current community projects are the Ittilal solar initiative, the permaculture project and wildlife conservation education.

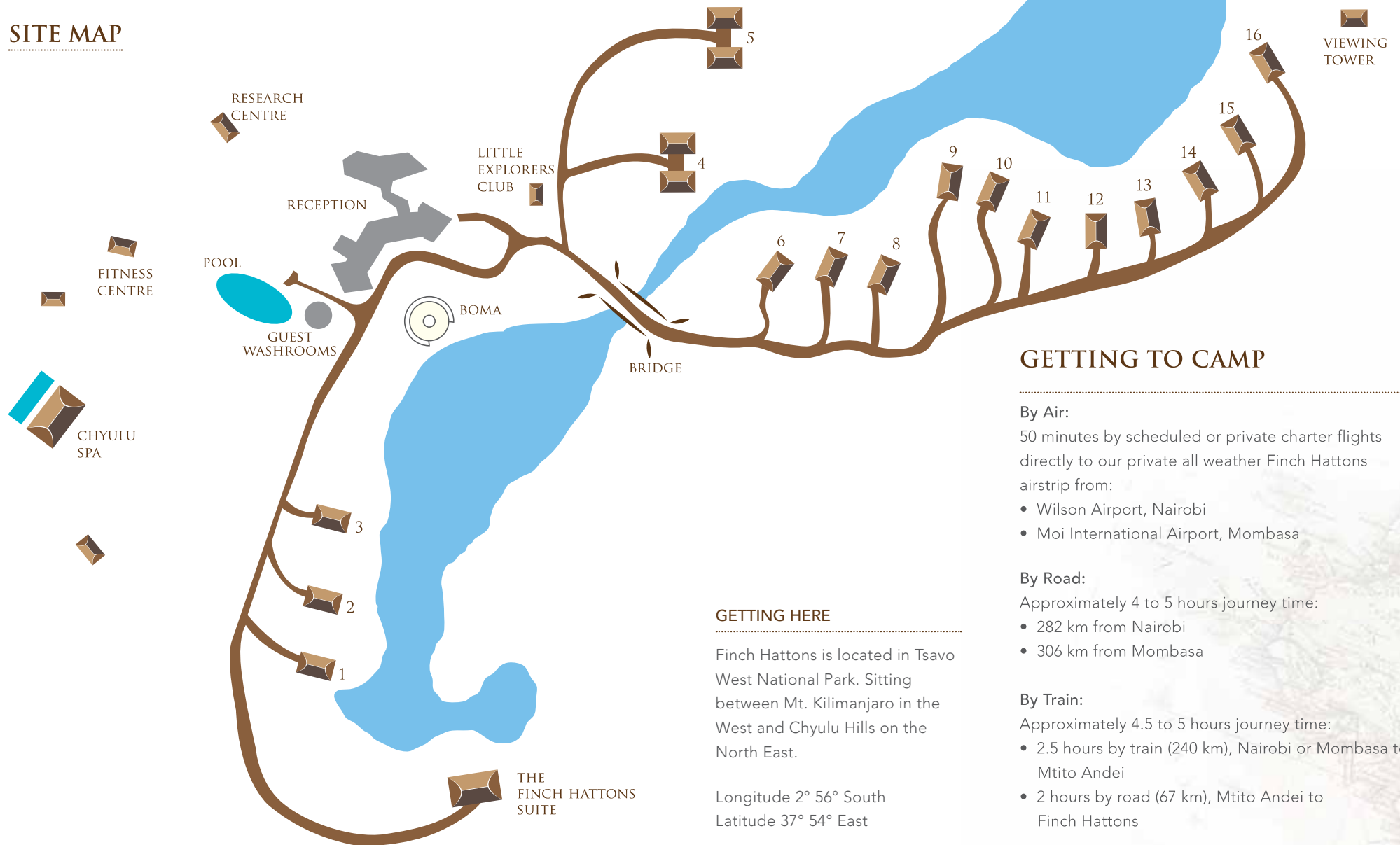
WEATHER

Tsavo temperature ranges from 27-33°C (81-88°F) in the daytime and 22-24°C (72-75°F) at night. The temperature is fairly consistent year round.

Kenya experiences short rains in April and May and long rains in November and December. These periods don't affect the safari or game viewing in Tsavo as rainfall is minimal in this region.



SITE MAP



GETTING TO CAMP

By Air:

50 minutes by scheduled or private charter flights directly to our private all weather Finch Hattons airstrip from:

- Wilson Airport, Nairobi
- Moi International Airport, Mombasa

By Road:

Approximately 4 to 5 hours journey time:

- 282 km from Nairobi
- 306 km from Mombasa

By Train:

Approximately 4.5 to 5 hours journey time:

- 2.5 hours by train (240 km), Nairobi or Mombasa to Mtito Andei
- 2 hours by road (67 km), Mtito Andei to Finch Hattons

GETTING HERE

Finch Hattons is located in Tsavo West National Park. Sitting between Mt. Kilimanjaro in the West and Chyulu Hills on the North East.

Longitude 2° 56' South
Latitude 37° 54' East

FACT SHEET

ACCOMODATION

14 Luxury Tented Suites (105sqm per suite)

- King or twin configuration
- Viewing deck

2 Bedroom Luxury Tented Suites (205sqm per suite)

- 2 ensuite bedrooms and a lounge
- Extended viewing deck

The Finch Hattons Suite (200sqm suite)

- Exclusive luxury ensuite bedroom
- Large outdoor deck
- Heated plunge pool
- Lounge and dining room
- Butler service
- Separate bodyguard room
- Private chef for in-suite dining
- Exclusive use of vehicle

FACILITIES

- Multiple dining locations
- Bar and lounge
- Star gazing terrace
- 12m high observation deck
- Outdoor boma & fireplace
- Infinity pool
- Young Explorers Club
- Library and research centre
- Chyulu Spa and Wellness Centre
- Conference facilities
- Finch Hattons Boutique

CHYULU SPA & WELLNESS CENTRE

- 2 outdoor massage pavillions with AC
- Spa pool
- Gym
- Hammam
- Yoga pavillion deck with a view of the Chyulu Hills
- Relaxation area with Lamu beds

ACTIVITIES

- Can be tailored to each client's needs
- Crater climbs
- Yoga and fitness training
- Scenic air flights
- Guided bush walks
- Bush sundowners and bush breakfasts
- Game drives around Tsavo including, but not limited to;
 - » Mzima Springs
 - » Chyulu Hills
 - » Shetani Lava Flow
 - » Lake Jipe
 - » Rhino Sanctuary
 - » Roaring Rocks
 - » Poacher's Lookout
- Bush and wildlife focused kids activities
- Cultural and community based visits to Iltilal Maasai Village.

GUEST SAFETY

We are located in 35 acres of unfenced wilderness in the National Park. Wild animals roam freely and you must be vigilant at all times. During early mornings, evenings and after dusk, it is strictly forbidden to walk around the camp without a Finch Hattons escort. Our security guards are available 24 hours a day. Walking should only be on the designated foot paths at all times.

SUSTAINABILITY

- Environmentally friendly camp design.
- Sustainable and environmentally friendly waste water management system.
- Organic room and spa amenities.
- Use of eco friendly cleaning products.
- Organic herb and vegetable garden.
- Filtered vivreau drinking water bottled at camp.

NATURAL SPRINGS

- Permanent crystal clear springs teaming with wildlife and birds.
- Resident hippos and crocodiles.
- Created due to the unique eco-system of Tsavo and its underground water systems between the Chyulu Hills and Mt. Kilimanjaro.

CONSERVATION & COMMUNITY

Join in on any of our conservation and community based programs in Iltilal - Solar, Permaculture and Conservation through schools initiatives.

ACCESS

- Private charter flights, helicopters and scheduled flights are available from Nairobi Wilson Airport to Finch Hattons Airstrip.
- Safarilink Aviation operates scheduled flights daily. Two in the high season and one in the low season. Flight time is 50 minutes.
- Mombasa Air operates one scheduled flight daily from Mombasa/Diani. The flight takes approximately one hour.
- The flight is followed by a 10 minute drive to the camp with game viewing enroute.

ACCOLADES

World Travel Awards

2017, 2016

Africa's Leading Tented Safari Camp

2015, 2014, 2013

Africa's Leading Safari Lodge

2015, 2012, 2009, 2005

Kenya's Leading Safari Lodge

Architectural Digest award

2015

Best New African Safari Camp





+254 (0) 720 444 419, (20) 3577500
reservations@finchattons.com
www.finchattons.com